



education

Department:
Education
REPUBLIC OF SOUTH AFRICA

**NATIONAL
SENIOR CERTIFICATE**

GRADE 10

MUSIC

EXEMPLAR PAPER

EXAMINATION NUMBER

MARKS: 150

TIME: 3 hours

This questions paper consists of 10 pages.

155 0 E

| |
|---------------------------|
| <u>Examination number</u> |
|---------------------------|

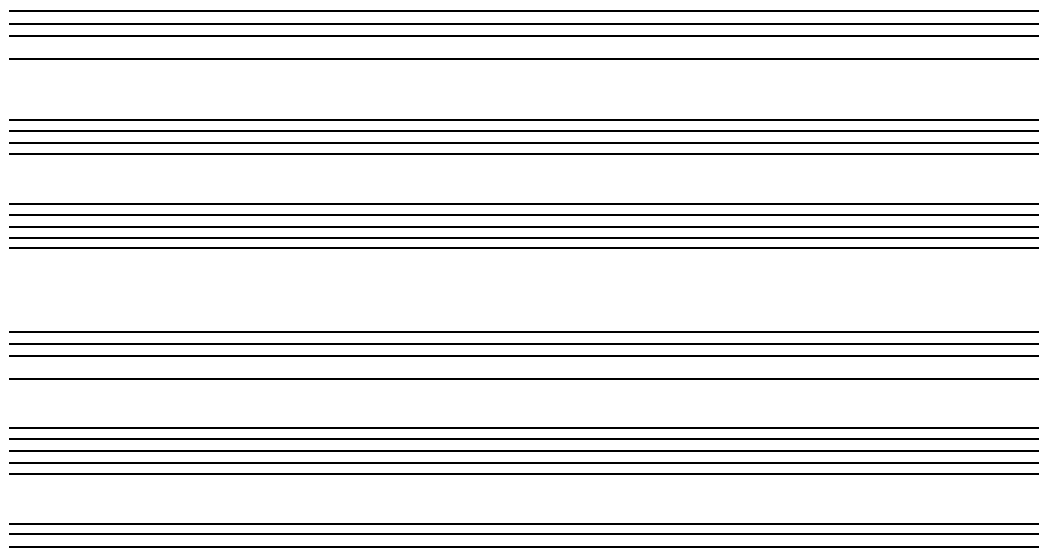
INSTRUCTIONS AND INFORMATION

1. This question paper consists of THREE sections: SECTION A, SECTION B and SECTION C.
2. SECTION A must be answered on this question paper in pencil.
3. SECTION B and SECTION C must be answered in the answer book in blue/black ink.
4. During the examination candidates are allowed to use an instrument to complete this question paper.
5. Manuscript paper will be provided for rough work.
6. Write your examination number on EACH page of the question paper, as well as on the COVER of your ANSWER BOOK.
7. Remember to hand in both the question paper and your answer book.

SECTION A: LO 2**QUESTION 1**

Arrange the following song for any THREE instruments of your choice.

- 1.1 TWO melodic instruments must be used.
- 1.2 The other instrument should be a percussion instrument, for example idio-
phone or membranophone.
- 1.3 Ensure that the instruments you select fit the required range/pitch.

Tula tula**[30]**

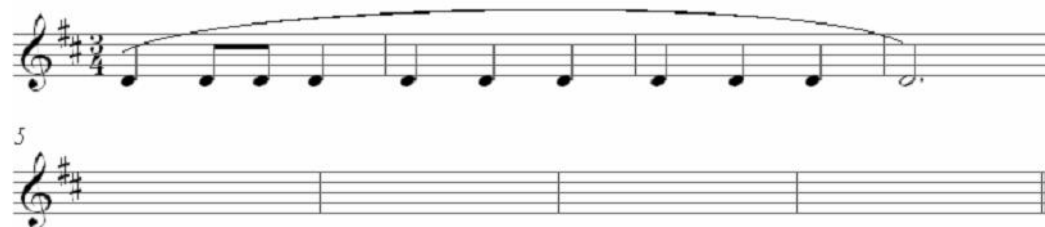
| |
|---------------------------|
| <u>Examination number</u> |
|---------------------------|

QUESTION 2

Answer either QUESTION 2.1 or QUESTION 2.2.

Complete the opening four bars with an improvised melody.

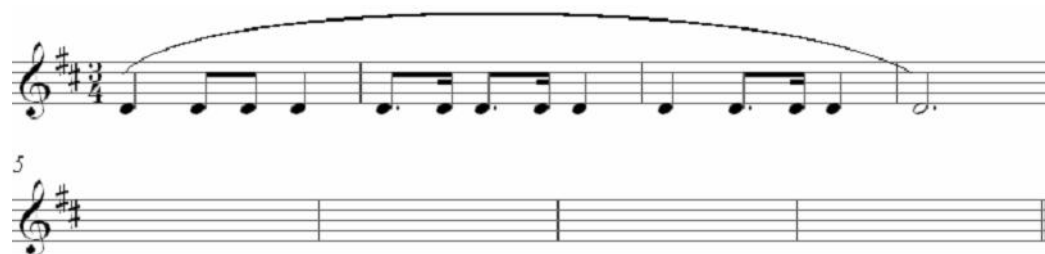
2.1



[6]

OR

2.2



[6]

| |
|---------------------------|
| <u>Examination number</u> |
|---------------------------|

QUESTION 3

Answer either QUESTION 3.1 or QUESTION 3.2

Indicate the chords that you would use to accompany the given melody. Complete the given melody and add the chords for the second phrase as well.

3.1

5

[15]

OR

3.2

5

[15]

TOTAL SECTION A: 51

Examination number

SECTION B: LO 3

QUESTION 4

Rhythmic and melodic patterns

4.1 Complete the bars by grouping the notes/rests correctly according to what has been asked.

1 Add three notes 2 Add one note and one rest 3 Add semiquaver and quaver notes

4 4 Add notes to form a syncopated rhythm. 5. Replace the rests with six notes (rewrite the bar).

(10)

4.2 Identify the following melodic patterns by writing the correct number in the right-hand column of the table below.

| | | |
|-------|---|--|
| 4.2.1 | Major chord (triad) | |
| 4.2.2 | Whole tone scale (fragment) | |
| 4.2.3 | Pentatonic scale | |
| 4.2.4 | Major scale | |
| 4.2.5 | Minor scale (state harmonic or melodic) | |

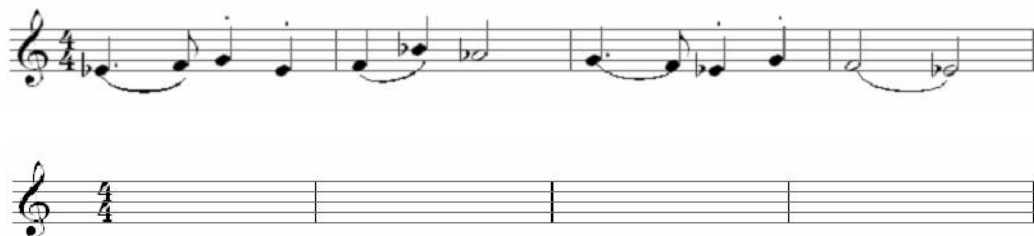
1 2 3

4 5

(5)
[15]

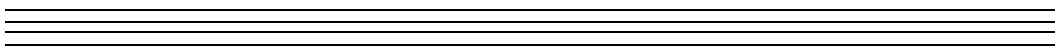
QUESTION 5

Identify the key and rewrite the following passage with a key signature:

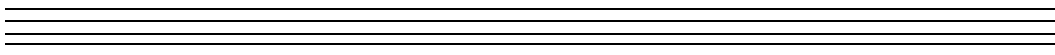
**[5]****QUESTION 6**

Write the following scales ascending. Indicate the semitones.

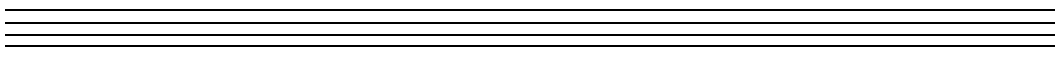
6.1 E major with key signature in the treble clef.

**(4)**

6.2 B major without key signature in the treble clef.

**(4)**

6.3 The pentatonic scale starting on F# in the treble clef.

**(3)**
[11]

| |
|---------------------------|
| <u>Examination number</u> |
|---------------------------|

QUESTION 7

Identify the intervals according to distance and type up to a 7th, from the tonic note, as found in the scale in QUESTION 6.1.

7.1 _____

7.2 _____

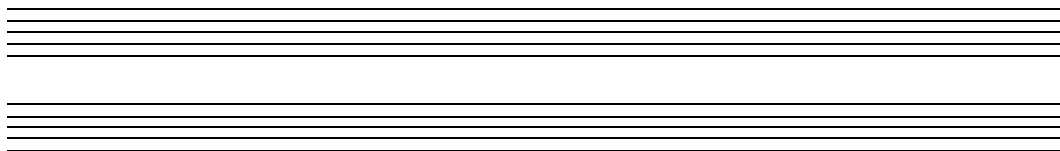
7.3 _____

7.4 _____

7.5 _____

[6]**QUESTION 8**

Write a melody of about 8 bars based on ONE of the scales in QUESTION 6.



Two empty musical staves, each consisting of five horizontal lines, provided for writing a melody.

[8]**TOTAL SECTION B: 45**

SECTION C: LO 4**QUESTION 9**

NOTE: QUESTION 9 should be done 1 hour before the written examination.

Identify and describe a section of recorded music (Africa, Asian or Western) according to:¹

9.1 Genre

9.2 Form/Structure

9.3 Instrumentation

9.4 Mood and character

9.5 Cultural context

[12]

The following questions should be answered in the examination room in an ANSWER BOOK.

QUESTION 10

You have studied the music of a South African culture. Describe its characteristics and how it is used within the context of social occasions.

[10]

QUESTION 11

Give THREE examples of each of the following instrument families:

11.1 Strings

11.2 Woodwinds

11.3 Brass

11.4 Membranophones

[12]

¹ A suitable recording or performance of the music will be provided by the teacher.

Examination number**QUESTION 12**

Outline each of the following musical styles according to their main characteristics:

12.1 Baroque music

12.2 Popular music

12.3 Jazz

[10]

QUESTION 13**MUSIC INDUSTRY**

13.1 Describe what *intellectual property ownership* means.

(3)

13.2 Describe the process and role players from the creation of a musical idea to where a composition is presented to the public.

(7)

[10]

TOTAL SECTION C: 54

GRAND TOTAL: 150