

Centre Number						Candidate Number				
Surname										
Other Names										
Candidate Signature										

For Examiner's Use	
Examiner's Initials	
Question	Mark
1	
2	
3	
4	
5	
6	
7	
8	
9	
10	
TOTAL	



Free-Standing Mathematics Qualification
 Foundation Level
 June 2015

Using Spatial Techniques

4982

Unit 2

Friday 15 May 2015 9.00 am to 10.00 am

- | |
|--|
| <p>For this paper you must have:</p> <ul style="list-style-type: none"> • a clean copy of the Data Sheet (enclosed) • a calculator • a pair of compasses • a protractor • a ruler. |
|--|

Time allowed

- 1 hour

Instructions

- Use black ink or black ball-point pen. Pencil should only be used for drawing.
- Fill in the boxes at the top of this page.
- Answer **all** questions.
- You must answer the questions in the spaces provided. Do not write outside the box around each page.
- Do all rough work in this book. Cross through any work that you do not want to be marked.
- You may **not** refer to the copy of the Data Sheet that was available prior to this examination. A clean copy is enclosed for your use.

Information

- The marks for questions are shown in brackets.
- The maximum mark for this paper is 40.
- You are expected to use a calculator where appropriate.

Advice

- In all calculations, show clearly how you work out your answer.


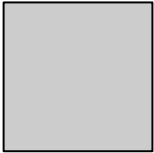


J U N 1 5 4 9 8 2 0 1

Section AAnswer **all** questions.

Answer each question in the space provided for that question.

Use **Marble floor tiles** on page 3 of the Data Sheet.**1** For each shape in the table below, state:**1 (a)** the order of rotational symmetry;**[2 marks]****1 (b)** the number of lines of symmetry.**[2 marks]**

Shape	Name	Order of rotational symmetry	Number of lines of symmetry
	Parallelogram		
	Square		



2 (a) In the space below, draw a circle with a radius of 4 cm.

[1 mark]

2 (b) Using a **pencil, ruler and a pair of compasses only**, construct an equilateral triangle inside the circle, with its vertices on the circumference of the circle.

Show **all** construction lines on your diagram.

[2 marks]

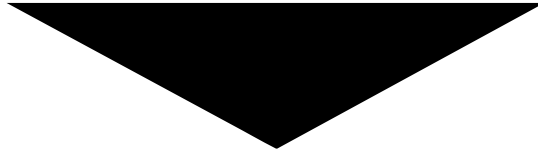
3

Turn over for the next question

Turn over ►



3 This triangle has two equal sides.



3 (a) Write down the mathematical name of this type of triangle.

[1 mark]

Answer

3 (b) The acute angles of this triangle are both 30° . **Calculate** the obtuse angle of the triangle.

[2 marks]

.....
.....
.....

Answer

3



Turn over for the next question

**DO NOT WRITE ON THIS PAGE
ANSWER IN THE SPACES PROVIDED**

Turn over ►

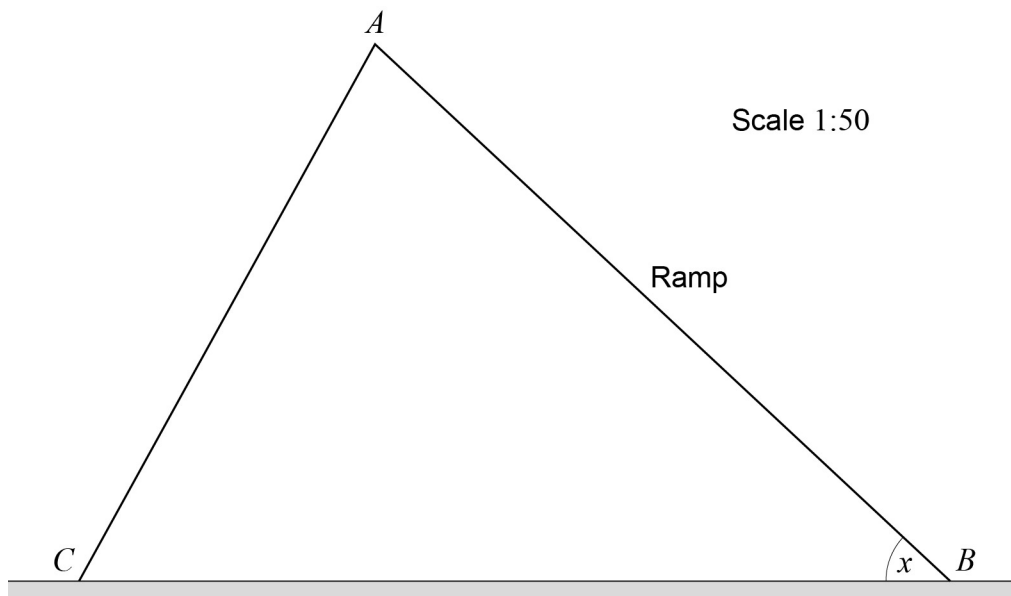


Section BAnswer **all** questions.

Answer each question in the space provided for that question.

Use **Motorbike stunts** on page 4 of the Data Sheet.

- 4** The diagram below shows the side view of a ramp. The scale of the diagram is 1:50.



- 4 (a)** Measure angle x . **[1 mark]**

Answer

- 4 (b) (i)** Measure the length of the ramp AB on the diagram.

Give your answer in **centimetres**.**[1 mark]**

Answer



4 (b) (ii) Calculate the actual length of the ramp.

Give your answer in **metres**.

[3 marks]

.....
.....
.....

Answer

5

5 A motorbike moves in a circle around the 'Wall of Death'.
The diameter of the circle is 9.4 metres.

5 (a) Calculate the circumference of this circle.

[2 marks]

.....
.....

Answer

5 (b) To travel a distance of 1 kilometre, how many times does the motorbike need to go
around this circle?

[2 marks]

.....
.....
.....
.....

Answer

4

Turn over for the next question

Turn over ►

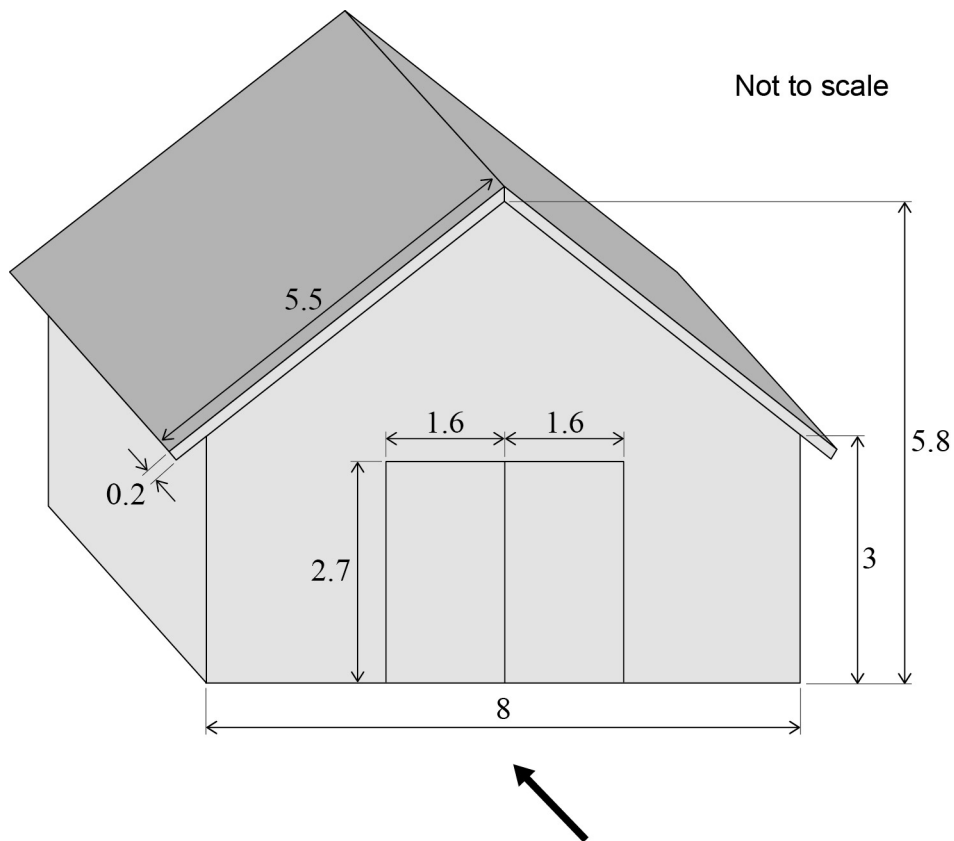


Section CAnswer **all** questions.

Answer each question in the space provided for that question.

Use **Barns** on page 5 of the Data Sheet.

- 6** The diagram below gives the dimensions of a barn.
The front of the barn has one line of symmetry.
All measurements are in metres.



On the opposite page, draw an accurate front elevation of the barn from the direction of the arrow.

Use a scale of 1:100.

[5 marks]

Space for working

.....

.....

.....

.....

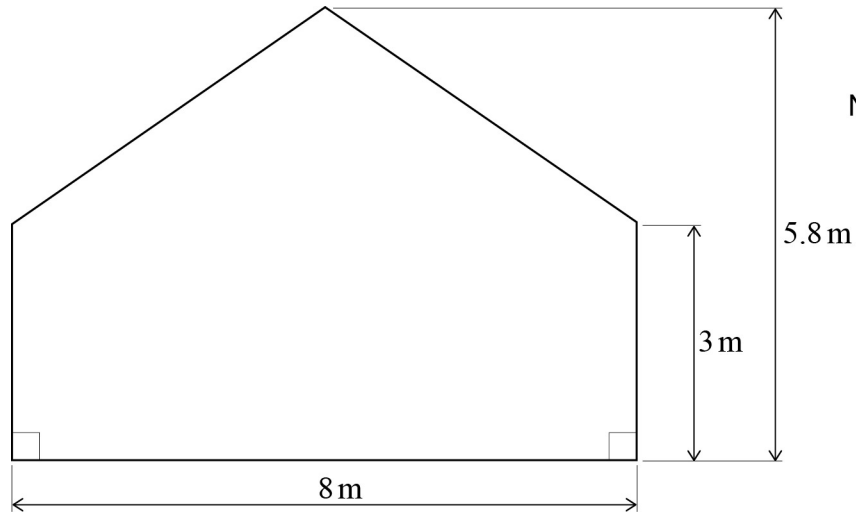
Turn over for the next question

5

Turn over ▶



7 The diagram below shows the dimensions of the back wall of the barn.



Calculate the area of the back wall of the barn.

[5 marks]

.....

.....

.....

.....

.....

.....

.....

.....

.....

.....

Answer

5



Turn over for the next question

**DO NOT WRITE ON THIS PAGE
ANSWER IN THE SPACES PROVIDED**

Turn over ►



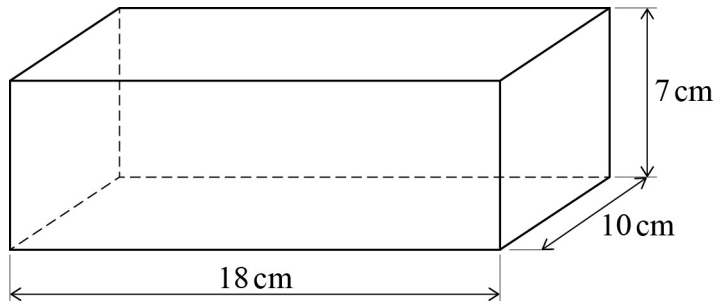
Section D

Answer **all** questions.

Answer each question in the space provided for that question.

Use **Cakes** on pages 6 and 7 of the Data Sheet.

- 8** A cake tin is in the shape of a cuboid.
The diagram below shows the dimensions of the tin.



Not to scale

Calculate the volume of this cake tin. State the units.

[3 marks]

.....

.....

.....

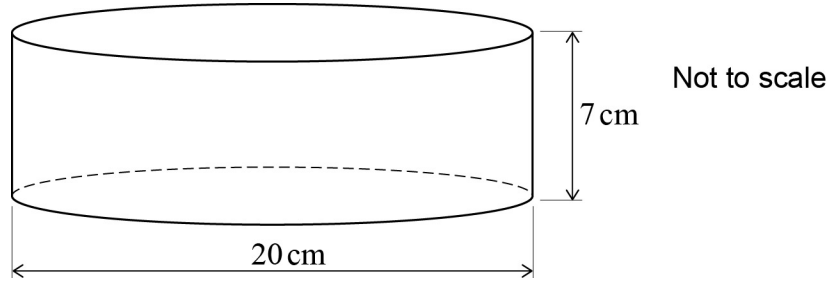
.....

Answer

3



9 Another cake tin is in the shape of a cylinder.
The diagram below shows the dimensions of this cake tin.



9 (a) Calculate the area of the circular base of this cake tin.

[3 marks]

.....

.....

.....

.....

.....

Answer

9 (b) Calculate the volume of this cake tin.

[2 marks]

.....

.....

.....

.....

.....

Answer

5

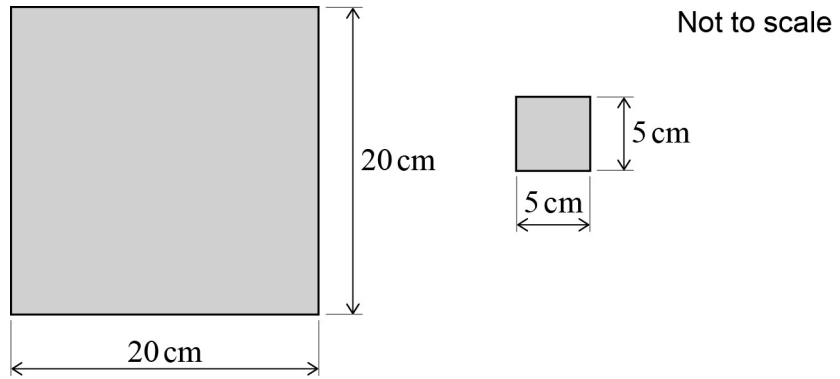
Turn over for the next question

Turn over ►



10

The top of a cake is a square with sides 20 cm long.
This cake is cut into smaller square pieces with sides 5 cm long.



How many smaller square pieces are obtained from the cake?

[3 marks]

.....

.....

.....

.....

.....

Answer

3

END OF QUESTIONS



There are no questions printed on this page

**DO NOT WRITE ON THIS PAGE
ANSWER IN THE SPACES PROVIDED**



There are no questions printed on this page

**DO NOT WRITE ON THIS PAGE
ANSWER IN THE SPACES PROVIDED**

Copyright © 2015 AQA and its licensors. All rights reserved.

