



Saint Theresa College  
PARVA PARVORUM PULCHRA

**PRIMARY SCHOOLS  
HALF YEARLY EXAMINATIONS 2013**

YEAR: 6	ENGLISH WRITING	Time: 50mins
---------	-----------------	--------------

Name: \_\_\_\_\_ Class: \_\_\_\_\_

TOTAL MARKS

30

READ CAREFULLY THE FOLLOWING POINTS:

- Fill in your name, surname and class.
- Do not turn the page before the start of the exam.
- If you make a mistake, cancel it neatly and write it again.
- When you are ready go over your work, check your spelling and work out what has been left out.

(10 marks)

# EITHER

In not more than 60 words, Write a letter of complaint to the manager of the store, telling him how you were treated by the sales person and what went wrong with your mobile phone.

Dear Sir,

[illegible]

Yours faithfully,

---



## Section B

(16 marks)

### Long Writing Text – about 150 words

**a. My most wonderful experience was when.....**

*Continue the story by writing about an exciting and wonderful experience that you recently had and which you will never forget. What did you do? Who were you with? Where were you? How did you feel?*

**b. Witness to a robbery.**

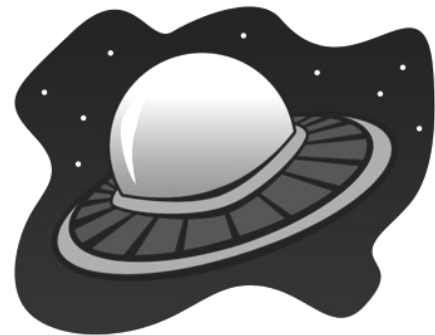
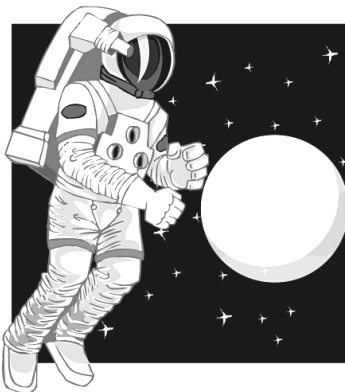
*You have been a witness to a robbery and you had a very good look at the thieves. How did the robbers look like and what did they do?*



**c. Write a letter to your friend inviting him/her to come over for the weekend at your house. Tell your friend what your plans will be for the weekend and how you will be spending the weekend.**

**d. Adventure in space.**

*How did you end up in space? How did you go to space? What did you see or do? Did you meet any aliens? Describe them? Which planets did you see and how did they look like?*



**Plan your composition before you start writing.**

(4 marks)

**Use this box below to write or draw your plan.**

The diagram is a planning tool for a composition. It consists of a central oval with five arrows pointing outwards to five rectangular boxes. The boxes are arranged as follows: two stacked vertically on the top left, one on the top right, one on the bottom left, and one on the bottom right. A sixth, larger rectangular box is positioned at the very bottom of the diagram.

[www.StudentBounty.com](http://www.StudentBounty.com)

[www.StudentBounty.com](http://www.StudentBounty.com)

