

# JUNIOR LYCEUM ANNUAL EXAMINATIONS 2007

Educational Assessment Unit – Education Division

**Form 3**

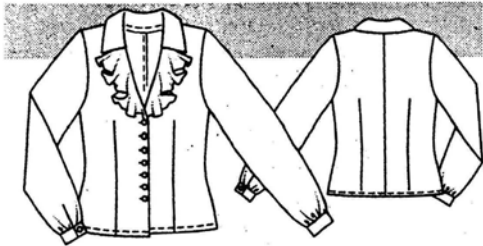
**TEXTILES STUDIES**

**Time: 1h 30min**

**Name:** \_\_\_\_\_

**Class:** \_\_\_\_\_

1a. Study the blouse in the picture and answer the following questions.



(i) For which occasion would you wear this blouse?

\_\_\_\_\_ (1 mark)

(ii) Suggest a suitable fabric for the blouse. Give a reason for your choice.

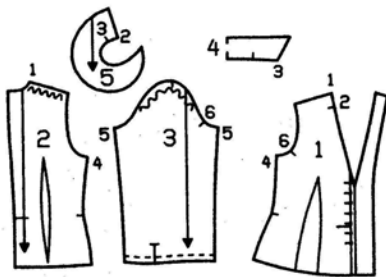
**Fabric:** \_\_\_\_\_

**Reason:** \_\_\_\_\_

(1, 2 marks)

b. These are the pattern pieces of the blouse.

Name each pattern piece. (*One has been done for you.*)



1.	
2.	
3.	
4.	
5.	Flounce

(4 marks)

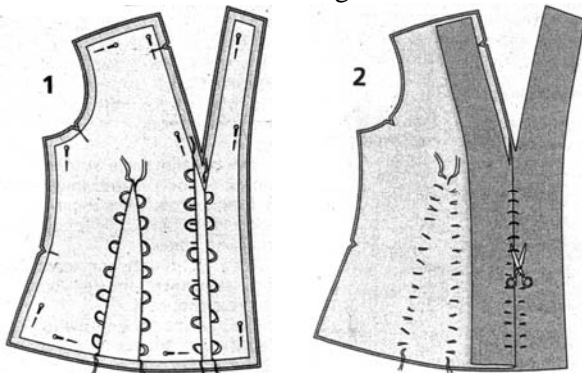
c. Besides fabric, name **two** other things (*not tools*) you need to buy to make the blouse.

(i) \_\_\_\_\_ (ii) \_\_\_\_\_

(2 marks)

d. The diagrams show a method of marking pattern markings.

Name the method in the diagrams.



**Name of method**

\_\_\_\_\_ (1 mark)

(ii) Name and draw **one** other method of marking.

Name

\_\_\_\_\_

Draw

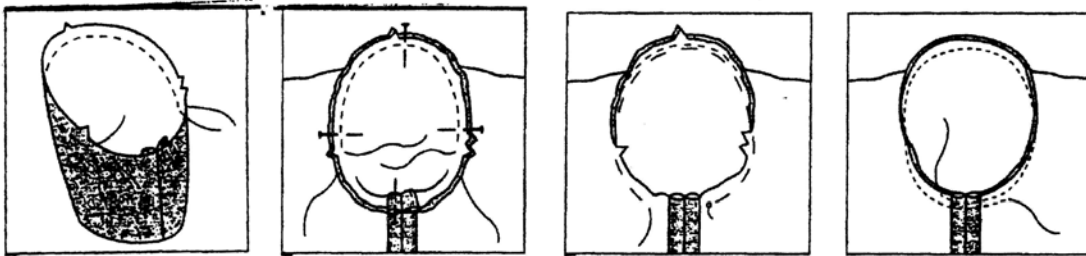


(1, 1 mark)

(iii) Which of these two methods do you prefer to use? \_\_\_\_\_

Why? \_\_\_\_\_  
(2 marks)

e. The blouse has a set-in sleeve. Using these diagrams, explain how you would set-in the sleeve of the blouse.



(i) \_\_\_\_\_

(ii) \_\_\_\_\_

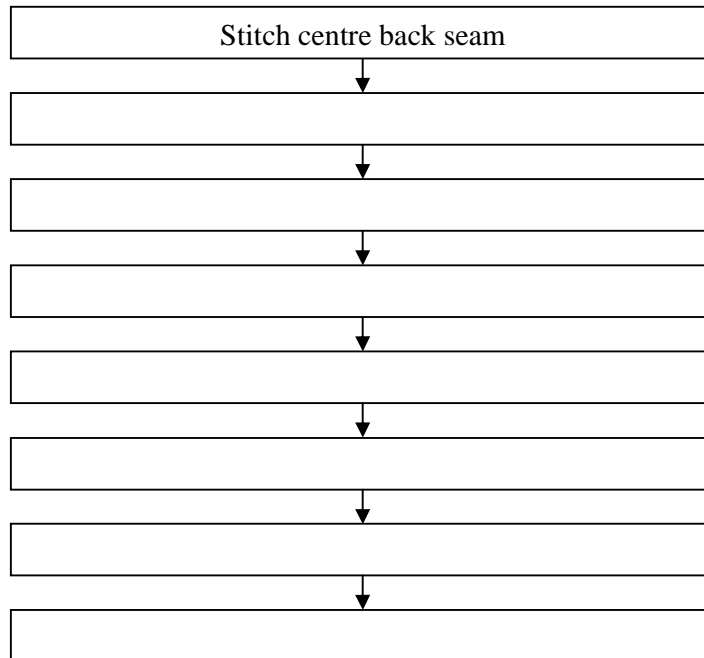
(iii) \_\_\_\_\_

(iv) \_\_\_\_\_

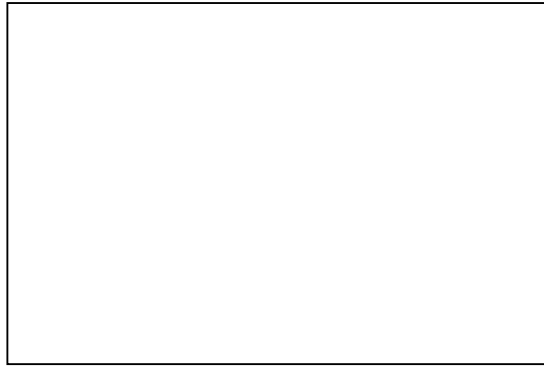
(4 marks)

f. Complete this flow chart explaining how to make up the blouse. (*The first one has been done for you.*)

(7 marks)



- g. (i) The blouse is given shape using darts. Explain how to match and stitch darts. Draw a diagram to support your answer.




---



---



---



---



---



---

(2, 5 marks)

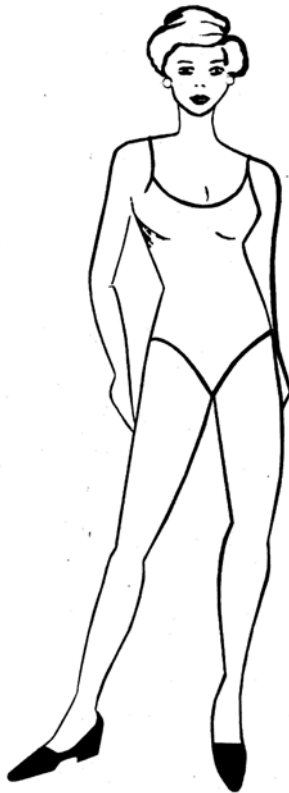
- (ii) Darts are a method of disposing of fullness. Name **two** other methods of disposing of fullness.

1. \_\_\_\_\_

2. \_\_\_\_\_

(2 marks)

- 2a. Using the template to help you, draw **two** fashionable blouses you would like to make for yourself.



(2, 2 marks)

- b. Name **two** fashion features of each blouse.

**Blouse 1** (i) \_\_\_\_\_

(ii) \_\_\_\_\_

**Blouse 2** (i) \_\_\_\_\_

(ii) \_\_\_\_\_

(2, 2 marks)

c. Name **two** famous fashion designers.

(i) \_\_\_\_\_

(ii) \_\_\_\_\_

(2 marks)

3a. When using a steam iron, why do you:

(i) Use only distilled water to fill the iron?

\_\_\_\_\_ (2 marks)

(ii) Empty iron after use?

\_\_\_\_\_ (2 marks)

b. Name **three** items of equipment (*other than the iron*) used for pressing. Explain the use of each.

**Pressing Equipment**

**Use**

(i) \_\_\_\_\_

\_\_\_\_\_

(ii) \_\_\_\_\_

\_\_\_\_\_

(iii) \_\_\_\_\_

\_\_\_\_\_

\_\_\_\_\_

(3, 6 marks)

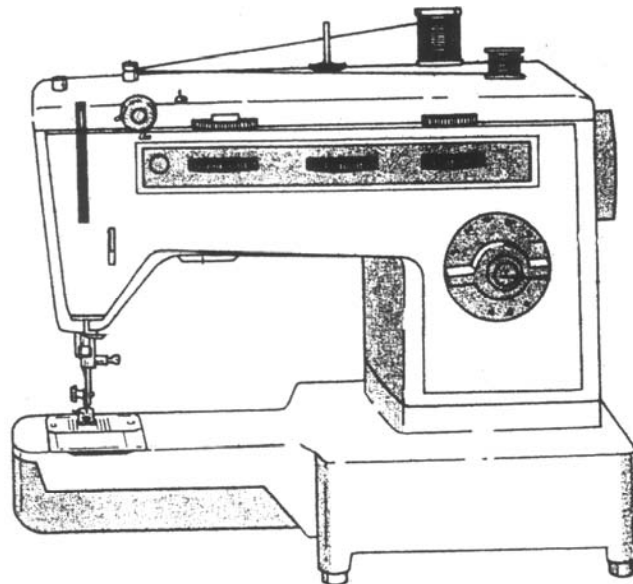
c. Your new steam iron has developed a fault. As a consumer, what action would you take to remedy this?

(i) \_\_\_\_\_

(ii) \_\_\_\_\_

(2 marks)

d. On the diagram, name any **four** parts of the sewing machine.



(4 marks)

4. Cotton is a popular fibre. It is widely used for clothing and soft furnishings.

(i) List **four** important properties of cotton.

1. \_\_\_\_\_ 2. \_\_\_\_\_  
 3. \_\_\_\_\_ 4. \_\_\_\_\_ (4 marks)

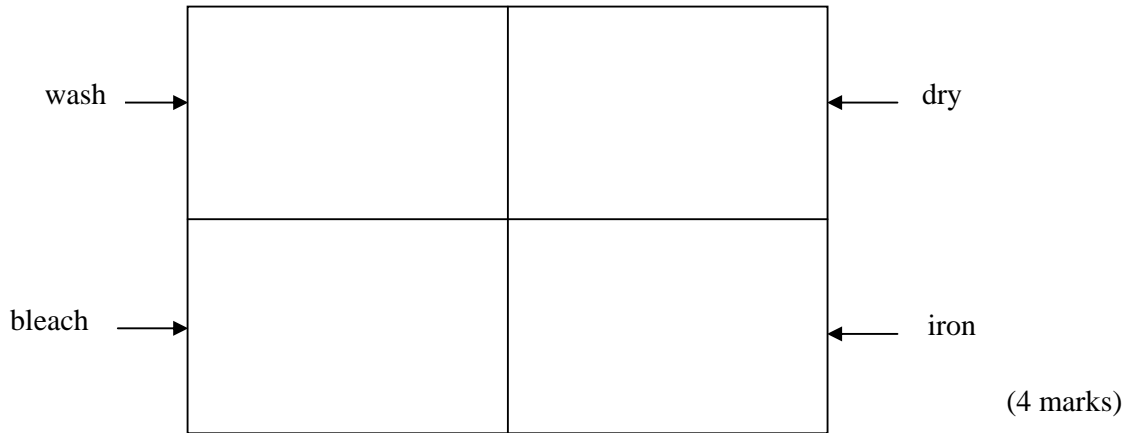
(ii) Suggest **two** items of clothing and **two** soft furnishing items that can be made from cotton.

**Two** items of clothing \_\_\_\_\_  
 \_\_\_\_\_ (2 marks)

**Two** soft furnishing items \_\_\_\_\_  
 \_\_\_\_\_ (2 marks)

(iii) Explain, by drawing a care label, how you would wash and iron **one** of these items.

Item Chosen: \_\_\_\_\_



(iv) Being a natural fibre, cotton has some disadvantages. Fabric finishes help to minimize (*lessen*) these disadvantages. Name **three** fabric finishes that can be applied to cotton to make it a better fabric. (*An example has been done for you.*)

1.	given lustre	—————>	calendering
2.		—————>	
3.		—————>	
4.		—————>	

(3, 3 marks)

(v) Describe how you would carry out an experiment to find out **one** property of cotton. Draw a diagram of your experiment.

**Diagram**

**Method**

- (i) \_\_\_\_\_  
 (ii) \_\_\_\_\_  
 (iii) \_\_\_\_\_  
 (iv) \_\_\_\_\_

(2, 4 marks)

5a. The diagrams show how to tie and dye a piece of cloth. Explain the method.



- (i) \_\_\_\_\_
  - (ii) \_\_\_\_\_
  - (iii) \_\_\_\_\_
  - (iv) \_\_\_\_\_
- (4 marks)

b. Why should fabrics be washed first before dyeing?

\_\_\_\_\_

\_\_\_\_\_

(2 marks)

c. Make a list of materials needed for tie and dye.

- (i) \_\_\_\_\_
  - (ii) \_\_\_\_\_
  - (iii) \_\_\_\_\_
  - (iv) \_\_\_\_\_
- (4 marks)

d. Name **one** other method of colouring fabric.

\_\_\_\_\_

(1 mark)

e. Name **one** item that can be coloured using this method (*question 5d*)

\_\_\_\_\_

(1 mark)