

**JUNIOR LYCEUM ANNUAL EXAMINATIONS 2006**

Educational Assessment Unit - Education Division

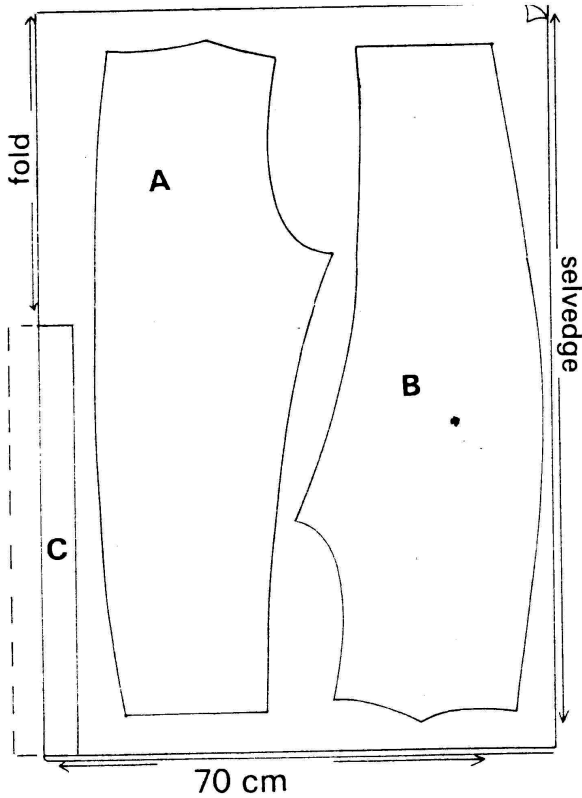
**FORM 4**

**TEXTILES STUDIES**

**TIME: 1h 30 min**

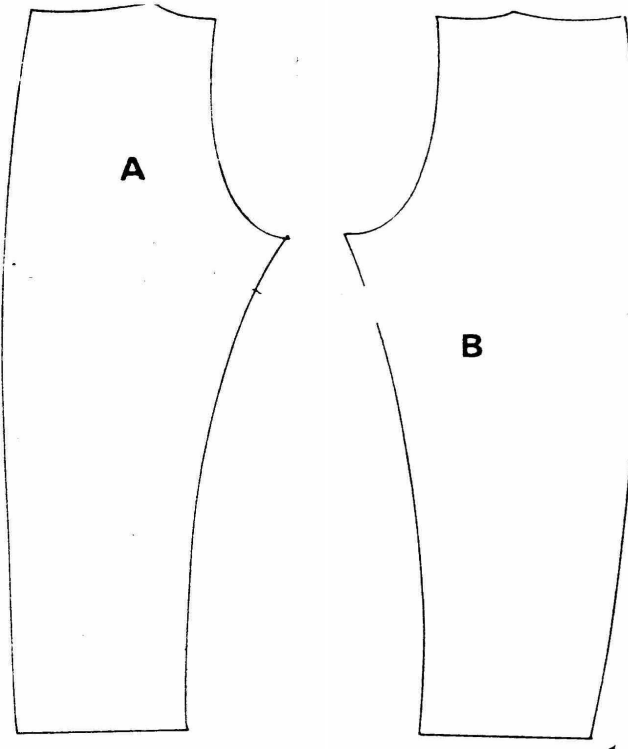
Name: \_\_\_\_\_

Class: \_\_\_\_\_



1. This is the layout of the trousers in the picture.
  - a. How wide is the fabric when measured from selvedge to selvedge?  
Width of fabric in cm \_\_\_\_\_ (1 mark)
  - b. Is this width considered double or single?  
\_\_\_\_\_ (1 mark)
  - c. Draw in **three** pattern markings you would expect to find on the pattern pieces. Name each pattern marking. (*answer this question on the layout of the trousers.*) (3, 3 marks)
  - d. Why are pattern markings useful?  
\_\_\_\_\_  
\_\_\_\_\_ (2 marks)

e.



On the pattern pieces provided, (A and B) explain how to alter this pattern.

- (i) by lengthening the pattern by 6cm if it is too long (*major alteration*) (2, 2 marks)
- (ii) by widening the waist of the pattern by 2cm (*small alteration*) (1, 1 marks)

**Note:** In each case, mark back and front views of the pattern. Show the working of your calculations.

f. Name a synthetic fabric or a fabric blend (*synthetic fabrics*) suitable for making this trouser. (*Do not name a microfibre.*)

**Fabric:** \_\_\_\_\_ (1 mark)

g. List **two** important properties of this fabric.

(i) \_\_\_\_\_

(ii) \_\_\_\_\_ (2 marks)

h. Describe an experiment to find out **one** of these properties. Include a diagram.

**Name of Experiment:** \_\_\_\_\_ (1 mark)

**Diagram**

**Method**

---



---



---



---



---

(2, 5 marks)

- i. Draw a care label for this fabric (*question f*) to include washing, drying, ironing, dry cleaning.

**Care Label**

Washing		Ironing
Drying		Dry Cleaning

(4 marks)

2. Read this information about microfibres and answer the following questions.

Microfibres are produced by mixing polymers to produce fibres that are even finer than silk. Microfibres can be woven so closely together, they can prevent water from permeating. However as they also have high moisture transference, they still allow perspiration to escape. They are used for items such as weatherproof fabrics for various outdoor activities.

- a. How are microfibres produced?

\_\_\_\_\_ (1 mark)

- b. Microfibres are even \_\_\_\_\_ than silk. (1 mark)

- c. How can microfibres be made water resistant?

\_\_\_\_\_ (1 mark)

- d. Microfibres are comfortable to wear as they allow \_\_\_\_\_. (1 mark)

- e. Name and draw **two** items of clothing that can be made from microfibres. Explain your choice, by giving a reason in each case, why you think microfibre is suitable.

**Item 1 (Draw)**

**Item 2 (Draw)**

**Name** \_\_\_\_\_

**Name** \_\_\_\_\_

**Reason** \_\_\_\_\_

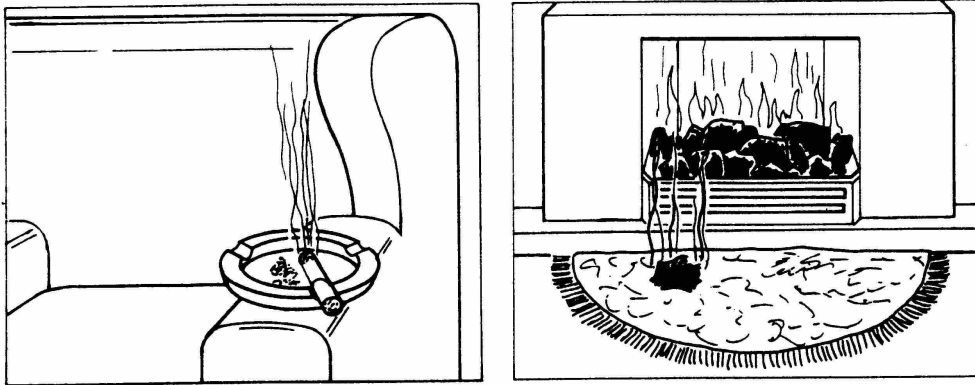
**Reason** \_\_\_\_\_

\_\_\_\_\_

\_\_\_\_\_

(1, 2, 1, 2 marks)

3. Fabrics in the home can be a source of danger.  
The pictures show two dangerous situations in the home.



- a. List **four** safety precautions to be observed in the home, to avoid risk of fire.

- (i) \_\_\_\_\_  
 (ii) \_\_\_\_\_  
 (iii) \_\_\_\_\_  
 (iv) \_\_\_\_\_

(4 marks)

- b. Name a fabric which is flame resistant.

\_\_\_\_\_

(1 mark)

- c. What finish can be applied to flammable fabrics to make them safe?

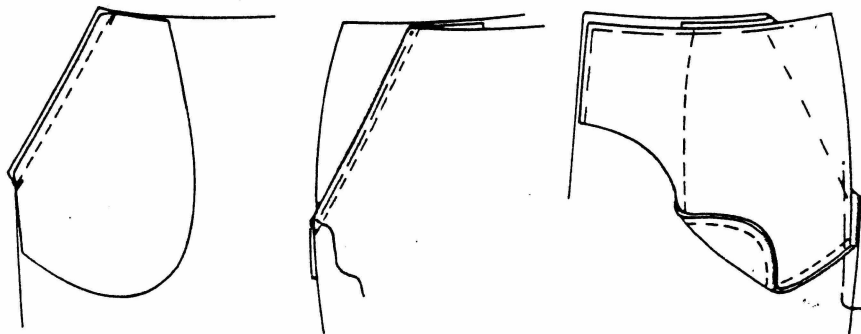
**Fabric Finish** \_\_\_\_\_

(1 mark)

4. With the help of these diagrams, explain how to make this pocket. Name the pocket.

- a. **Name** \_\_\_\_\_

(1 mark)



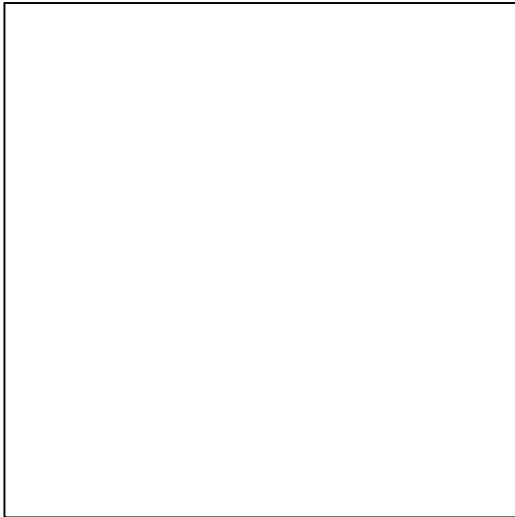
- b. (i) \_\_\_\_\_  
 (ii) \_\_\_\_\_  
 (iii) \_\_\_\_\_  
 (iv) \_\_\_\_\_  
 (v) \_\_\_\_\_  
 (vi) \_\_\_\_\_

(6 marks)

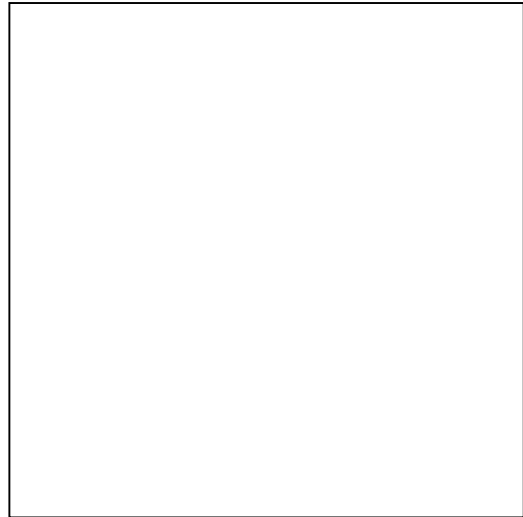
5. Explain how to make up a faced opening in a garment, by filling in the missing parts of the sentences. Draw **two** diagrams of the facing.

chalk	edges	on each side	opening	cut
corners	together	wrong-side	iron	mark

**Faced Opening**



**Diagram 1**

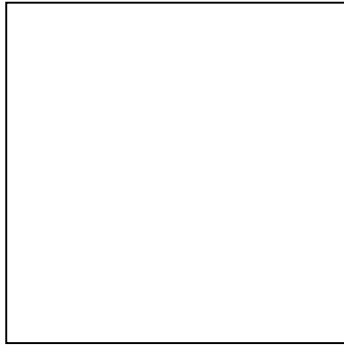


**Diagram 2**

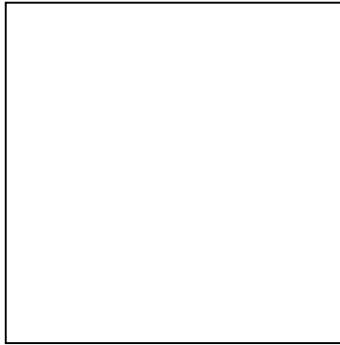
- (i) Cut a rectangle of fabric 5cm longer than the \_\_\_\_\_ and 7.5cm wide.
  - (ii) Neaten the \_\_\_\_\_. Mark the centre line with \_\_\_\_\_.
  - (iii) Apply the fabric to the garment, right sides \_\_\_\_\_ and the centre line over the \_\_\_\_\_ for the opening.
  - (iv) Pin and tack 0.5cm \_\_\_\_\_ of the centre line.
  - (v) Machine, making a blunt point at the end. \_\_\_\_\_ the slit.
  - (vi) Using the \_\_\_\_\_ turn the facing through to the \_\_\_\_\_ and press flat. Reinforce \_\_\_\_\_.
- (2, 6 marks)

6. A soft furnishing manufacturer wants to develop a new range of items based on inspiration from underwater life. A co-ordinated range of home furnishing products is to be produced.

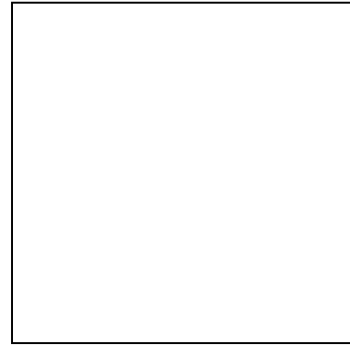
a. Draw sketches of **three** co-ordinated items – a cushion, a rug or a carpet and a bedspread, suitable for a summer residence (*home*) of a young family.



cushion



rug or carpet



bedspread

(3, 3, 3 marks)

b. Give details of colours, stitches, paint and other decorations. Put all details on sketches.

(3, 2, 2 marks)

Colours (i) \_\_\_\_\_

(ii) \_\_\_\_\_

(iii) \_\_\_\_\_

(3 marks)

Embroidery Stitches (i) \_\_\_\_\_

(ii) \_\_\_\_\_

(iii) \_\_\_\_\_

(3 marks)

7a. Write **five** points about the care and use of sewing machines.

(i) \_\_\_\_\_

(ii) \_\_\_\_\_

(iii) \_\_\_\_\_

(iv) \_\_\_\_\_

(v) \_\_\_\_\_

(5 marks)

b. What should you do if your sewing machine has the following faults?

(i) needle breaks

\_\_\_\_\_

(ii) machine runs heavy or noisy

\_\_\_\_\_

(iii) looped stitches

\_\_\_\_\_

(2, 2, 2 marks)

c. Describe how you would remove a stain from fabric which you stained with sewing machine oil.

(i) \_\_\_\_\_

(ii) \_\_\_\_\_

(iii) \_\_\_\_\_

(3 marks)