

**JUNIOR LYCEUM ANNUAL EXAMINATIONS 2007**

Educational Assessment Unit – Education Division

**FORM 4**

**INFORMATION AND COMMUNICATIONS  
TECHNOLOGY**

**TIME: 1 h 30 min**

Name: \_\_\_\_\_

Class: \_\_\_\_\_

**Answer ALL questions. This paper carries 100 marks.**

**1 This question is about Basic Concepts.**

a) **Complete** the sentences below using the following words:

**hard disk, switched off, read, system unit, ROM-BIOS, processed**

- (i) Data that is being \_\_\_\_\_ is stored in the RAM. [1]
- (ii) When the computer is \_\_\_\_\_ the data in the RAM is lost. [1]
- (iii) On the other hand, the \_\_\_\_\_ stores data permanently. [1]
- (iv) The data in ROM can only be \_\_\_\_\_. [1]
- (v) When you switch on your computer, the \_\_\_\_\_ software checks that the computer is working correctly. [1]
- (vi) An external hard disk is one that is NOT fitted inside the \_\_\_\_\_. [1]

b) **Draw lines** by joining the dots, to match the units in **list A** with their corresponding values in **list B**. *One has been done as an example.*

**List A: Units**

**List B: Values**

- |                  |   |                  |     |
|------------------|---|------------------|-----|
| (i) 1 kilobyte   | • | • 1024 megabytes | [1] |
| (ii) 1 bit       | • | • 1024 gigabytes | [1] |
| (iii) 1 terabyte | • | • 1024 kilobytes | [1] |
| (iv) 1 megabyte  | • | • 0 or 1         | [1] |
| (v) 1 gigabyte   | • | • 1024 bytes     | [1] |

c) TWO types of software are the **Operating System** software and the **Application** software.

(i) Write down **two examples** of each type of software:

Operating System software	Application software
1.	1.
2.	2.

(ii) When the computer system is switched on, which of the TWO types of software mentioned in part (c) above, is **loaded from the hard disk into the RAM and run**?

[1]

(iii) From the list below, **underline the word** which correctly specifies the process of *loading the software.....*, as mentioned in part c(ii) above:

**running, booting, opening, loading**

[1]

d) The hard disk is the most common, non-removable, storage device.

(i) What do you understand by **non-removable**?

[1]

(ii) Name TWO **removable** storage devices. For each device, write down the **unit** that is used to measure its storage capacity.

1. \_\_\_\_\_ Unit: \_\_\_\_\_

[2]

2. \_\_\_\_\_ Unit: \_\_\_\_\_

[2]

(iii) Which is the **fastest** storage device – the hard disk or any one of those you mentioned in part (ii) above?

[1]

e) Why are **new versions of the same software** released year after year? (For example, Windows 98, Windows 2000, Windows XP)

[1]

f) (i) What does the abbreviation **GUI** stand for?

[1]

(ii) Provide ONE **reason** to show why computer users **prefer** to use GUI software rather than other types of software.

[2]

(iii) From the following list underline the THREE items that are normally **associated only with GUI software**?

**icons, files, programs, menus, toolbars**

[3]

(iv) Besides the keyboard, which other important **input device** is extensively used with any GUI software?

[1]

**2 This question is about databases.**

a) (i) Write down the letter ‘D’ (for Data) or ‘I’ (for Information) to show whether each of the following is **data** or **information**.

- MMM198
- 13122007
- Republic Day falls on 13/12/2007
- John 1350
- Mary has an annual salary of Lm5000

D or I

[1]  
[1]  
[1]  
[1]  
[1]

(ii) Two of the following items may be considered as **examples of databases**.

**A self-running presentation.**  
**The employees’ particulars.**

**A class attendance register.**  
**A high-resolution image.**

Write the TWO correct examples in the spaces provided below.

1. \_\_\_\_\_
2. \_\_\_\_\_

[1]  
[1]

b) The following table shows a database on books in a lending library. Study the database and then answer the questions below.

Book code	Title	Author	Date taken on loan	New book
13332	Powerful Cars	Farrugia M	24/05/2006	Yes
56999	Cities	Hayes L	12/05/2006	No
28760	The Earth	Smith P	01/06/2006	No
00673	Computers	Mallia J	21/05/2006	Yes
59122	Healthy eating	Sands H	04/06/2006	No

(i) Write down ONE **field name** in the box on the right.

[1]

(ii) Copy ONE complete **record** in the space below.

[2]

(iii) The *New book* field was set to the data type **Yes/No**. Write down the other **THREE data types** that were set for the fields below.

Fields	Data type
Book code	
Author	
Date taken on loan	

[1]  
[1]  
[1]

(iv) Suggest a **field size** (field length) for the *Title* field.

[1]

(v) What is a **key field** (primary key)?

\_\_\_\_\_  
\_\_\_\_\_

[1]

(vi) Which **field** from the table, may be set as the key field?

[1]

(vii) The *Book code* field is selected and the two buttons shown below are clicked one at a time. Write down the **Book code** of the first record which is displayed.

Button

Book code



\_\_\_\_\_

[1]



\_\_\_\_\_

[1]

(viii) The following questions are based on the button given below.



What is the **button** used for?

\_\_\_\_\_  
\_\_\_\_\_

[2]

One of the '**No**' data items in the *New Book* field of the table of the previous page is selected. If the button is pressed, how many **records** would be displayed?

\_\_\_\_\_

[1]

Write down ONE difference between the function of the button above and a **query**?

\_\_\_\_\_  
\_\_\_\_\_

[2]

c) The two characters '\*' and '?' are used for searching data.

(i) What are these **characters** called?

\_\_\_\_\_

[1]

(ii) Which of the two characters is used to **replace any single character in the same position** as the character?

\_\_\_\_\_

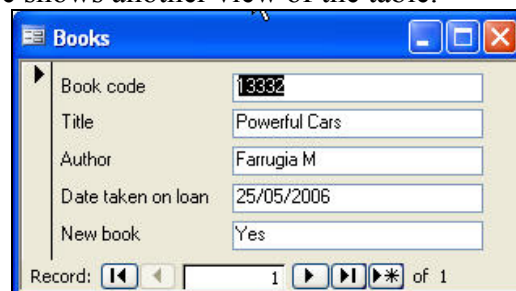
[1]

(iii) Which of the two characters is used to **replace any group of characters in the same position** as the character?

\_\_\_\_\_

[1]

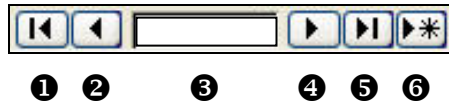
d) The following picture shows another view of the table.



(i) What is this **view** (or object) called?

[1]

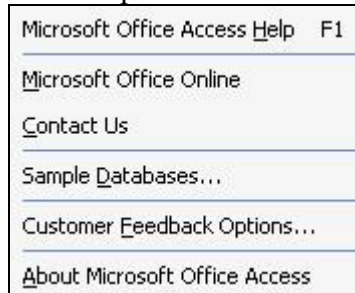
(ii) The six navigation items shown below have been numbered for reference.



Write down the **item number** that you use to:

- Move to the last record \_\_\_\_\_ [1]
- Move to the previous record \_\_\_\_\_ [1]
- Type in a new record \_\_\_\_\_ [1]
- Go to the next record \_\_\_\_\_ [1]
- Go to a specific record \_\_\_\_\_ [1]
- Move to the first record \_\_\_\_\_ [1]

e) Which **menu** from the menu bar must you click to find the options, some of which are shown in the picture below?



Menu: \_\_\_\_\_

[1]

**3 This question is about presentations.**

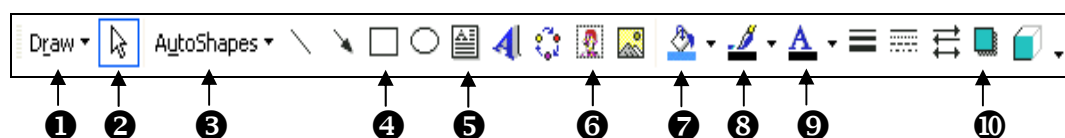
a) Write down whether the following statements are **True** or **False**.

- (i) A presentation program is used for preparing essays.
- (ii) A timed slideshow is controlled by mouse clicks.
- (iii) A slide master helps in creating a consistently looking presentation.
- (iv) A picture cannot be inserted in the master slide.
- (v) Templates provide a background and a colour scheme
- (vi) The file extension for a template is .PPT

**True or False**


[1]  
[1]  
[1]  
[1]  
[1]  
[1]

b) The picture below shows the **drawing toolbar** with ten numbered buttons.



(i) Write down the **button number** for the following tasks:

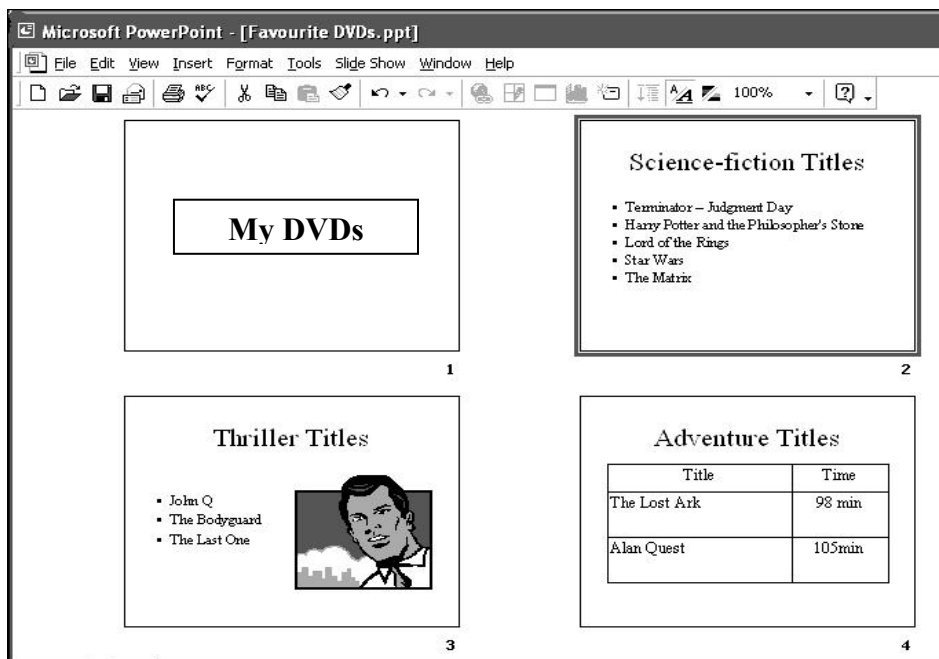
- To change the text colour. \_\_\_\_\_ [1]
- To select an image. \_\_\_\_\_ [1]
- To insert a shadow to an image. \_\_\_\_\_ [1]
- To draw a cylinder. \_\_\_\_\_ [1]
- To change the outline colour of an object. \_\_\_\_\_ [1]

(ii) What is the difference between **button 4** and **button 5**?

Button 4: \_\_\_\_\_ [1]

Button 5: \_\_\_\_\_ [1]

c) Look carefully at the picture of the numbered slides below.



(i) What is the **file name** of this presentation?

File name: \_\_\_\_\_ [1]

(ii) Write down the number of the slide that is **currently selected**?

Slide number: \_\_\_\_\_ [1]

(iii) Which slide contains the **layout** called **Bulleted list**?

Slide number: \_\_\_\_\_ [1]

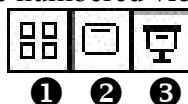
(iv) If you want to display the information in the table of slide 4 **graphically**, what type of **layout** should you choose?

Layout: \_\_\_\_\_ [1]

(iv) Has any **slide transition effect** been applied to the presentation?

Yes or No: \_\_\_\_\_ [1]

d) The following picture shows three numbered **view mode buttons**.



(i) Write down the number of the button to **run the slideshow**.

Button number: \_\_\_\_\_

[1]

(ii) Which button is normally used to **edit the text** in a slide?

Button number: \_\_\_\_\_

[1]

(iii) Which button is used to **display all the slides together** on the screen?

Button number: \_\_\_\_\_

[1]

e) The **stages for creating a new slideshow** are given below but NOT in the correct order. Write down the stage numbers in the correct order.

*The first stage has been marked for you.*

Stages not in order	In order
1. Insert slide transition effects.	
2. Select an appropriate template.	
3. Insert text build effects in the slides.	
4. Plan the contents of each slide.	1
5. Insert text and graphics in each slide.	

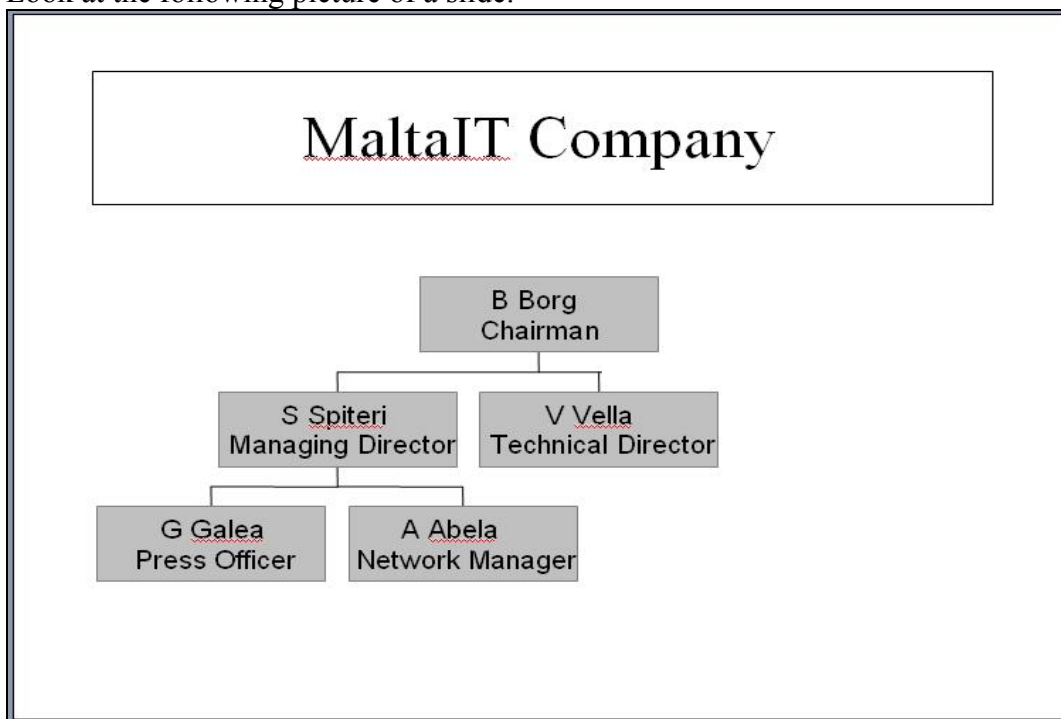
[1]

[1]

[1]

[1]

f) Look at the following picture of a slide.



(i) What is the **layout** of this slide called?

Layout: \_\_\_\_\_

[1]

(ii) In the picture above draw the following co-worker of V Vella.

**Z Zammit  
Secretary**

[2]

(iii) Write down ONE **subordinate** of B Borg.

Subordinate: \_\_\_\_\_

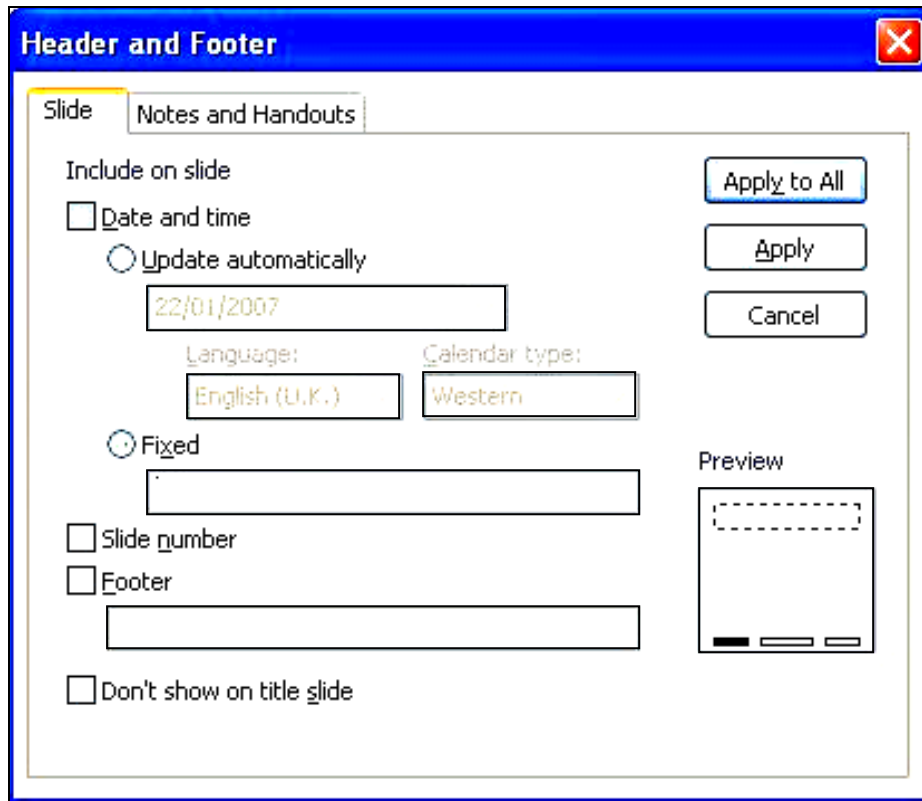
[1]

(iv) Who is a **co-worker** of A Abela?

Co-worker: \_\_\_\_\_

[1]

g) The following picture is used to insert a Header and Footer in one/all slides.



Mark the picture above according to show the following requirements:

(i) To insert the **date 10/6/2007**.

[2]

(ii) To **number** the slides.

[1]

(iii) To insert your **name** in the footer.

[2]

(iv) To **hide** the headers and footers on the first title slide.

[1]