

# JUNIOR LYCEUM ANNUAL EXAMINATIONS 2006

Educational Assessment Unit – Education Division

FORM 4

## INFORMATION AND COMMUNICATIONS TECHNOLOGY

TIME: 1 h 30 min

Name: \_\_\_\_\_

Class: \_\_\_\_\_

Answer ALL questions. This paper carries 100 marks.

### 1 This question is about Basic Concepts.

a) Two memories found in a computer system are **RAM** and **ROM**.

i) What do the abbreviations **RAM** and **ROM** stand for?

RAM: \_\_\_\_\_ [1]

ROM: \_\_\_\_\_ [1]

ii) Which of the two memories is the **main working memory** of the computer?

\_\_\_\_\_ [1]

b) Use the following words to **complete the sentences** below:

**byte root kilobyte binary megabytes digital**

i) A \_\_\_\_\_ computer works with the numbers 0 and 1. [1]

ii) The numbers 0 and 1 form a system of numbers called \_\_\_\_\_. [1]

iii) A \_\_\_\_\_ consists of 8 bits. [1]

iv) A \_\_\_\_\_ consists of 1024 bytes. [1]

v) A gigabyte consists of 1024 \_\_\_\_\_. [1]

vi) The \_\_\_\_\_ folder is the folder at the uppermost level of the tree organization. [1]

c) For each of the following **disks** tick (✓) the most appropriate unit for **Capacity** and the relative **Speed**. *The CD-ROM has been done as an example.*

Type of disk	Unit used for measuring capacity			Access speed compared to hard disk	
	KB	MB	GB	Slower	Faster
i) CD-ROM		✓		✓	
ii) Zip disk					
iii) Floppy disk					
iv) DVD					

[2]

[2]

[2]

- d) i) What is the difference between an **internal hard disk** and an **external hard disk**?

Internal hard disk: \_\_\_\_\_

[1]

External hard disk: \_\_\_\_\_

[1]

- ii) Write **True** or **False** for each of the following statements.

- The ROM-BIOS checks that the computer is working correctly.
- Modern computers are supplied with a flash BIOS.
- Video memory chips are used to store the operating system.
- A Jaz drive is another name for a floppy drive.
- Any data on a disk will be lost after re-formatting the disk.

True/False

[1]

[1]

[1]

[1]

[1]

- e) Tick (✓) the **correct answer** for each of the following multiple choice questions on the **Operating System**:

- i) An example of an Operating System is:

- Word.
- Excel.
- Windows.
- Access.


[1]

- ii) The Operating System:

- Is normally loaded automatically from a floppy disk.
- Allows you to use the features of a modern computer.
- Is an application program used for a particular task.
- Shows you the details of how the hardware works.


[1]

- iii) An Operating System which is NOT user-friendly is:

- DOS.
- Windows.
- Paint.
- PowerPoint.


[1]

- iv) An Operating System which is user-friendly should have a:

- Basic Input/Output System (BIOS).
- Command Line Interface (CLI).
- Central Processing Unit (CPU).
- Graphical User Interface (GUI).


[1]

v) Compared to a PC, a different type of computer (for example Apple):

- Must use an older version of Windows.
- Has a completely different operating system.
- Does not need an operating system.
- Uses the same type of operating system.

vi) New versions of operating systems are released year after year so that:

- The software publishers continue to make money each year.
- You pay for a patched up version which you bought last year.
- The computer system runs faster with the new version.
- Each new version has less bugs, greater flexibility, more features.

vii) The version of Windows that you have in the school's computers is:

- XP
- 2000
- Me
- 98

viii) The sequence in which software is loaded after switching on the computer is:

- Application software and operating system.
- Application software and BIOS.
- BIOS, operating system and application software.
- Desk top and operating system.

f) Match the **application software** with its **usage** by drawing lines. *One has been done for you as an example.*

Application software	Use
i) <i>Word processing program</i>	• To create web sites.
ii) Spreadsheet program	• To view web sites.
iii) Database program	• <i>To write letters, memos, etc.</i>
iv) Presentation program	• For organizing large amounts of information.
v) Accounts/Payroll program	• To produce professionally looking slideshows.
vi) Web browsing program	• For working with numbers.
vii) Web authoring program	• For calculating employee wages.

g) Complete the following sentence by writing down the appropriate **input device**:  
A GUI is simply an additional part of the operating system that displays windows and drop-down menus and also enables you to drive your computer using a \_\_\_\_\_.

## 2 This question is about Databases.

- a) Consider the following TWO items:

**Bernard's date of birth is 25/05/74**

**Bernard 250574**

- i) Write down the item which is **data**.

[1]

- ii) Write down the item which is **information**.

[1]

- iii) What must be **done** to **data** to become **information**?

[2]

- b) i) Tick (✓) the best definition for a **Database**:

- A set of data stored in the computer's hard disk.
- A structured collection of related data about one or more subjects.
- A collection of data on people which can be immediately accessed.

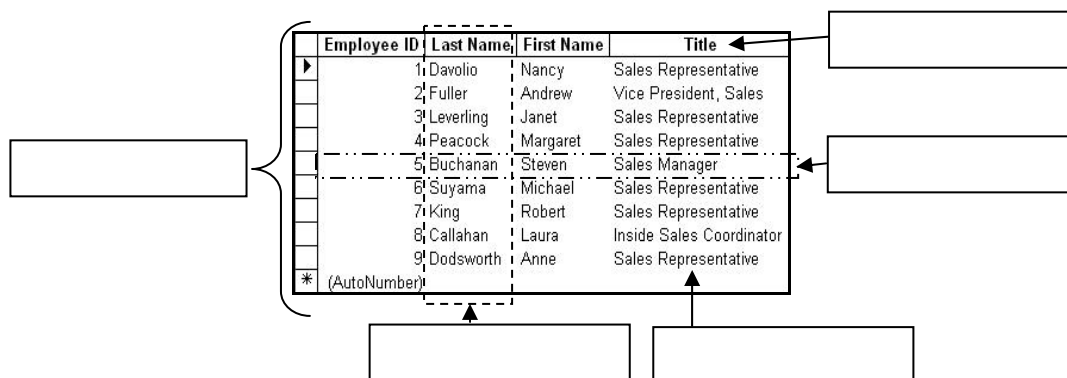

[1]

- ii) Give an example of a **frequently used database** that you have at home.

[1]

- c) i) Use the following FIVE words to **label** the parts of the database picture shown below:

**table, record, field, fieldname, data**



[1]

[1]

[1]

[1]

[1]

- ii) What is meant by the **field data type**?

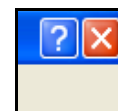
[2]

Write down TWO **examples** of field data types.

1. \_\_\_\_\_ 2. \_\_\_\_\_

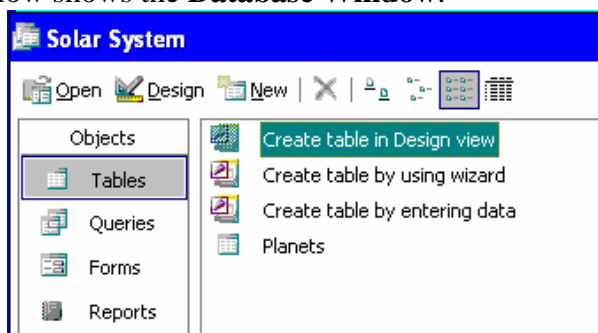
[2]

- d) Within many dialogue boxes you find a **question mark symbol** in the top right hand corner of the dialogue box as shown on the right. What is the **question mark** used for?



[1]

- e) The picture below shows the **Database Window**.



- i) What is the name of the **database**?

[1]

- ii) What is the name of the **table**?

[1]

- f) i) The two pictures below show different views of the same table – **Datasheet View** and **Design View**. Write down the appropriate view beneath each picture.

	Name	Diameter (km)	Moons	Length of day (hours)
	Mercury	4500	0	1320
	Venus	12160	0	5760
	Earth	12680	1	24
	Mars	6720	2	25
	Jupiter	140800	12	10
	Saturn	120000	9	10
	Uranus	46400	5	11
	Neptune	43200	2	15
	Pluto	6400	0	144
	*			

Field Name	Data Type	Description
Name	Text	
Diameter (km)	Number	
Moons	Number	
Length of day (hours)	Number	

[2]

- ii) Which view is used to add a **new field**?

[1]

- iii) Which view is used to add a **new record**?

[1]

- iv) The picture on the right shows three buttons. Circle the **button** which is used to switch from one view to the other.



[1]

- g) The records in a table may be laid out as shown in the picture on the right.

With reference to this picture answer the following questions.

Class 3B	
Surname	Buttigieg
Name	Charlene
Address	10 Tuna Str
Locality	Mellieha
Date of Birth	06-Jul-90
Record: 1 of 7	

- i) What **name** is given to this **type of view** (also called Object)?

[1]

- ii) How many **fields** have been created? \_\_\_\_\_ [1]
- iii) How many **records** have been entered? \_\_\_\_\_ [1]
- iv) Which **record number** is currently being viewed? \_\_\_\_\_ [1]
- v) **Draw lines** to show the task performed by each navigation button.

Navigation Button



- To go to the next record.



- To go to the last empty record.



- To go to a specific record.



- To go to the first record

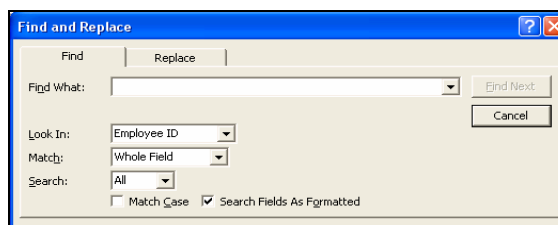


- To go to the previous record.



- To go to the last record.

- h) The picture on the right is used to search for particular data in a database.



Underline the **word which is found** for each of the following search strings using **wildcard characters**.

Search string

Underline the word

- i) J?ne Janet Jan June [1]
- ii) B\*ge Baggage Barges Breakages [1]
- iii) 20#0 2001 2010 2011 [1]

- j) i) Explain what you understanding by '**Applying a Filter**' to a table.

---



---

- ii) Look carefully at the picture on the right and note where the cursor is.

Planets : Table			
Name	Diameter (km)	Moons	Length of day (hours)
Mercury	4500	0	1320
Venus	12160	0	5760
Earth	12680	1	24
Mars	6720	2	25
Jupiter	140800	12	10
Saturn	120000	9	10
Uranus	46400	5	11
Neptune	43200	2	15
Pluto	6400	0	144

What happens if the **Filter by Selection** button is now clicked?

---

### 3 This question is about Presentations (PowerPoint)

a) What is a **Master Slide**?

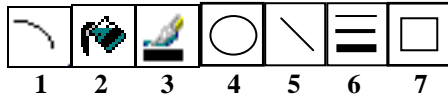
---



---

[2]

b) You have drawn the **face** shown in the picture on the right using some of the **numbered tools** given below.



i) Write down the number of the tool that you have used to **draw the outline of the face**.

---

[1]

ii) Which tool number was used to **draw the mouth**?

---

[1]

iii) Which tool was used to **shade the face** with a colour?

---

[1]

iv) Write down the tool number used to **show or change the colour of the outlines**.

---

[1]

v) Write down the tool number used to **change the thickness of the outlines**.

---

[1]

vi) Underline the **key** from the keyboard that you have pressed, together with the mouse, to draw a **perfect circle** for the face and eyes.

**Control**

**Space bar**

**Shift**

[1]

vii) The following four pictures show changes done to the face. Write down beneath each face **what has been done**.

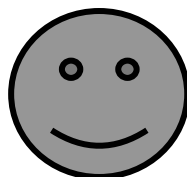



---




---

[2]



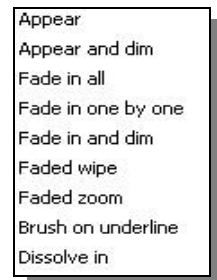

---




---

[2]

viii) After selecting the face you decide on choosing one of the **effects** shown in the picture on the right.



- What is such an **effect on the face** called?

---

[1]

- You can also use the effects on how a **slide appears on the screen**. What is such an **effect on a slide** called?

---

[1]

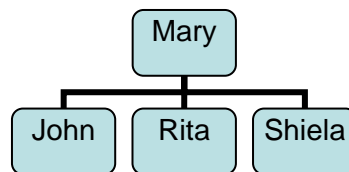
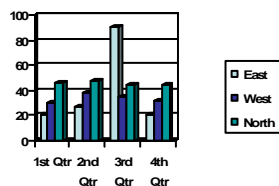
- c) You have created four charts in your presentation. Use the following words to label the pictures of the **charts** given below.

**Pie chart**

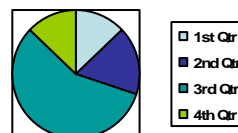
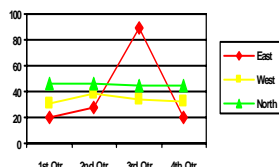
**Column chart**

**Organisation chart**

**Line chart**

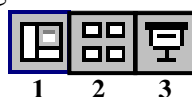


[2]



[2]

- d) The following three **numbered buttons** are used while working with the presentation (PowerPoint) program.



- i) Which button number is used to **start the slideshow**? \_\_\_\_\_

[1]

- ii) Which button number is used to **edit a slide**? \_\_\_\_\_

[1]

- iii) Which button number is used to **show all the slides** on the screen? \_\_\_\_\_

[1]

- e) Which key from the keyboard can be pressed to **end a slideshow**? \_\_\_\_\_

[1]

- f) Part of the dialogue box for **printing the slides** is given below.

**Print range**

☐ All ☐ Current slide ☐ Selection

☐ Custom Show: \_\_\_\_\_

☒ Slides: \_\_\_\_\_

**Copies**

Number of copies: \_\_\_\_\_

☒ Collate

Answer the following two questions by writing down the answer in the appropriate boxes of the dialogue box above.

- i) To print from slide 4 to slide 9 only.
- ii) To print three copies of the slides.

[1]

[1]