

JUNIOR LYCEUMS - ANNUAL EXAMINATIONS 2003

Education Assessment Unit – Education Division

FORM 1

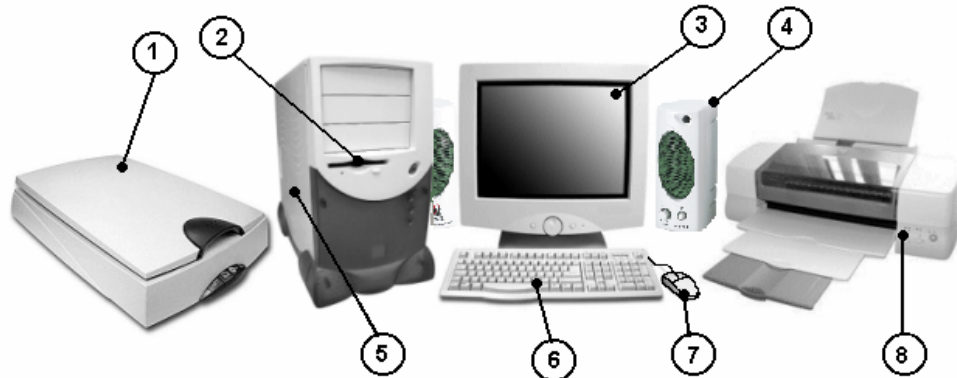
ICT

TIME: 1 hour 30 min

NAME:

CLASS:

- 1 (a) The diagram below shows the main components of a computer system. Write in the space provided below the name of the parts marked 1 to 8.



1	_____	5	_____
2	_____	6	_____
3	_____	7	_____
4	_____	8	_____

4

- (b) Give one example of how the peripherals numbered 1, 4 and 8 are used.

1	_____
4	_____
8	_____

3

- (c) One kind of computer network is called a LAN (Local Area Network). Give TWO advantages and ONE disadvantage of having a LAN rather than stand alone computers in an office.

1st advantage: _____

2nd advantage: _____

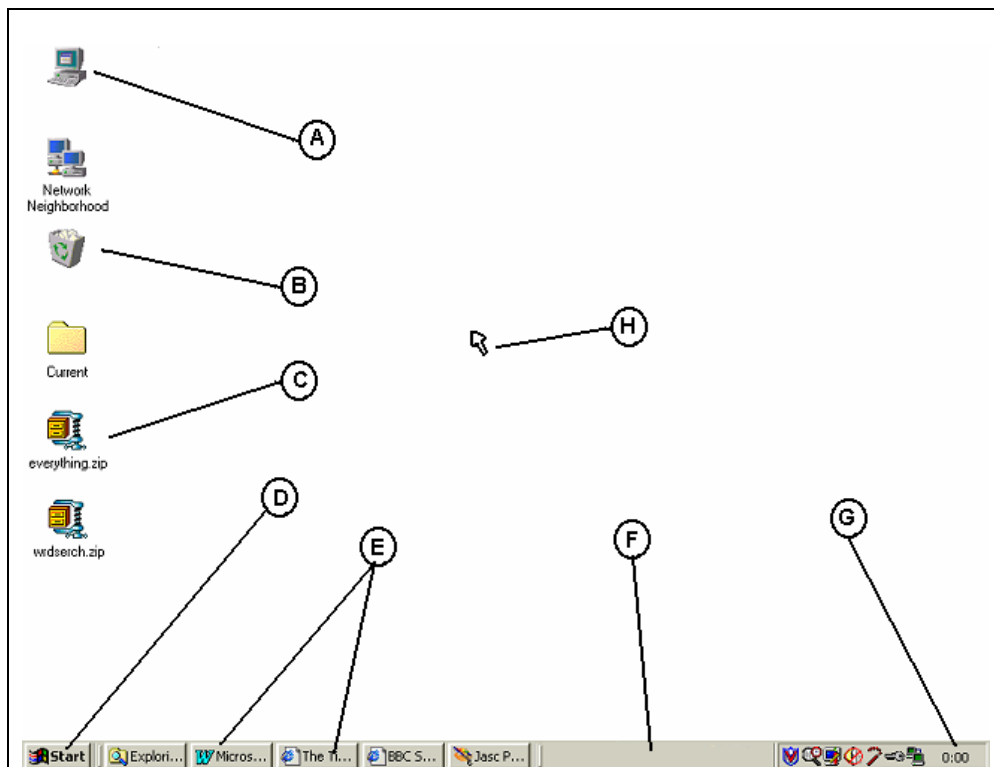
A disadvantage: _____

3

- (d) Underline the correct word shown in brackets after each statement:
- The four basic functions performed by a computer are input, storage, output, and (processing; browsing; arithmetic; printing; display)
 - Most computers are equipped with the following as the main output device (keyboard; speech recognition device; monitor; printer; mouse)
 - Which kind of user interface uses icons and a mouse pointer? (command-line; menu; prompted; graphical)
 - A graphical user interface must have the following as an output device (mouse; keyboard; high resolution monitor; CD-ROM; printer)
 - Which of the following is an input device for a computer? (monitor; mouse; printer; speaker)
 - A word processor can be classified as (hardware; software; network; text; document)

3

- 2 (a) The diagram below shows the windows desktop. Name the parts marked from A to H in the space provided on page 3.



A _____ E _____
 B _____ F _____
 C _____ G _____
 D _____ H _____

4

(b) Explain briefly the function of the following objects shown in the diagram above: A,B,D, F and G. The first one is done for you.

A Used to access the floppy disk, hard disk, CD-ROM or other drives.

B _____

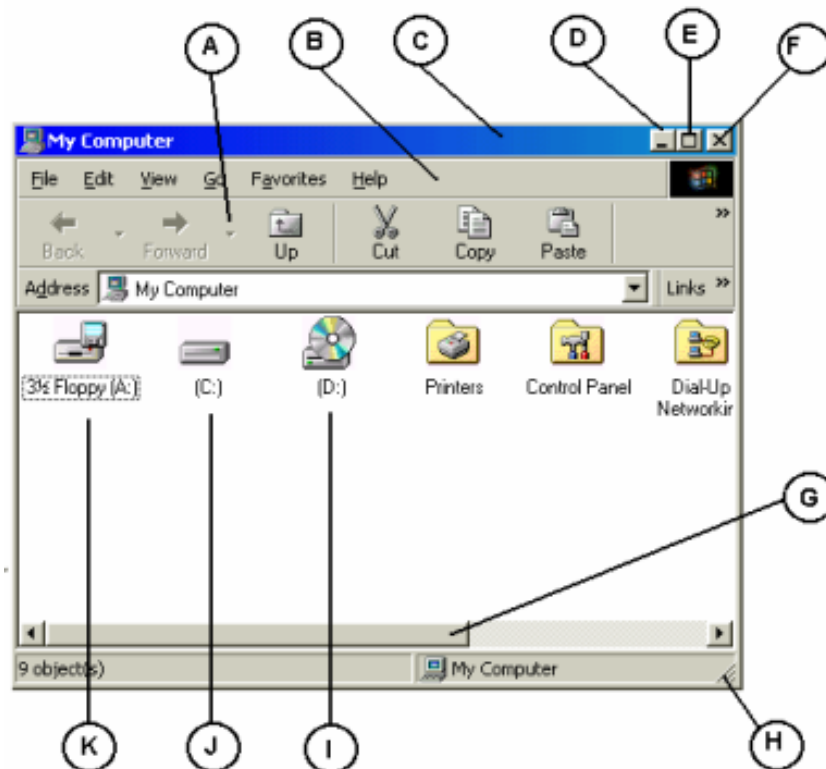
D _____

F _____

G _____

4

3 (a) The diagram below shows a window. Name the parts of the window marked from A to H in the space provided on page 4.



- | | |
|---------|---------|
| A _____ | E _____ |
| B _____ | F _____ |
| C _____ | G _____ |
| D _____ | H _____ |

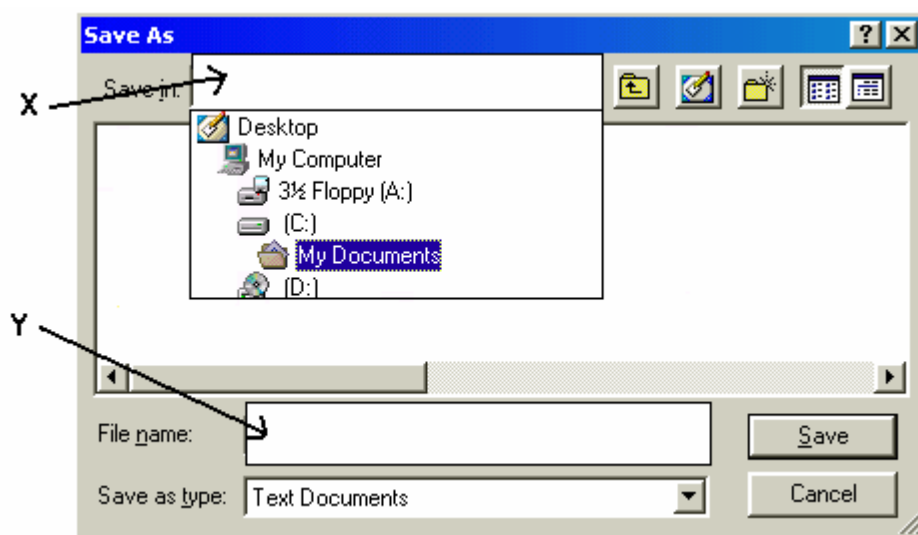
4

(b) Match the descriptions with the letters in the diagram shown in question 3(a) on page 3. The first one is done for you.

i) To view hidden icons you click and drag the object labelled	G
ii) To view the contents of the hard disk you double click on	
iii) To view the contents of a CD-ROM you double click on	
iv) To move the window you click and drag the object labelled	
v) To close the window you click the object labelled	
vi) To minimise the window you click the object labelled	
vii) To resize the window you click and drag the object labelled	

3

(c) Kurt uses **Notepad** to write a short note. After finishing he stores the letter on a **floppy disk** and names it **Note**. Fill the boxes marked **X** and **Y** in the picture below with the appropriate words to save his work.



2

- 4 (a) Tonia buys some presents for her friends. She uses the spreadsheet to workout the bill.

	A	B	C	D	E
1	Bill by Tonia				
2					
3	Item	Quantity	Unit Price	Amount	
4	Jigsaw Puzzle	1	12	=B4*C4	
5	Board Game	2	2		
6	Tennis Ball	5	1		
7					
8			Total		

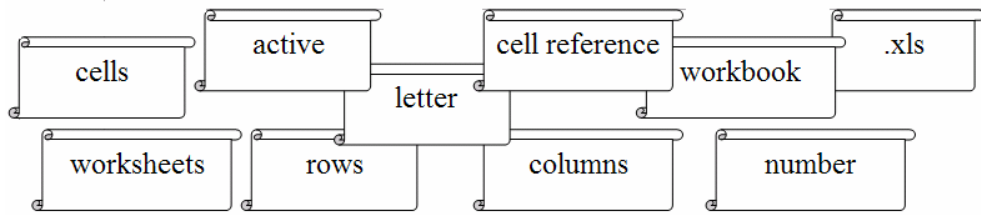
Write **True** or **False** for the following statements:

- | | | |
|--|---------------|--|
| | True or False | |
| i) Cell A3 contains a label. | | |
| ii) Cell B3 contains a value. | | |
| iii) The active cell is D8. | | |
| iv) A formula can be found in cell D3. | | |
| v) The result that should appear in cell D4 is 12. | | |

- (b) Look carefully at Tonia's spreadsheet and complete the following:

- | | | |
|--|--|---|
| i) What value is expected to appear in cell D5. | | 1 |
| ii) Type the formula that has to be entered in cell D6 to find the amount. | | 2 |
| iii) Write the formula used in cell D8 to calculate the bill. | | 2 |

5 Use the following terms to complete the passage below:



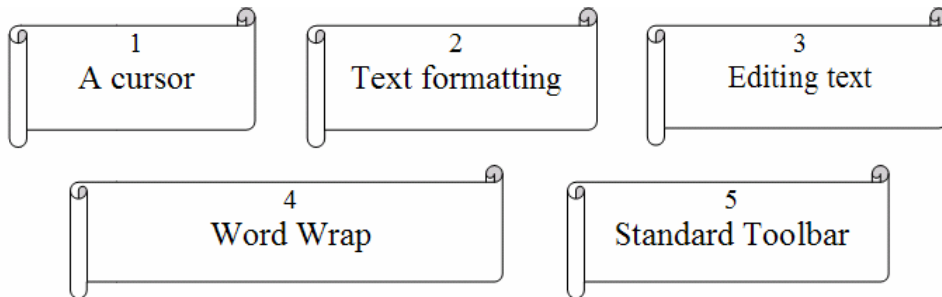
A Spreadsheet is a file containing spreadsheets, which Excel calls Excel file names end in

A spreadsheet is made up of, arranged in and

Each cell has a unique, consisting of its column and a row Only one cell is the cell at any one time.

10

6 Read carefully the phrases in the paper scrolls and match with the phrase in the table below by writing the number in the little scroll on the right of the phrase.



- i) Includes operations such as insert text, delete text, move text.
- ii) The Cut, Copy and Paste buttons are found in this toolbar.
- iii) This happens when a word that is too long to fit on the end of a line.
- iv) An indicator or marker on the screen that shows where the next character keyed in will appear.
- v) Includes changing font size, changing font type, underlining and centering text.

5

7

The crossword puzzle below refers to terms used in Word Processing.

	1		T ²			3			
						O			4
5	R				I	C			
									V
	W			6		7		V	
		8							
				R					
				S		9			
			10						

Across

5. A Word Processor file can also contain these. (8)
7. Use Cut and Paste to text. (4)
8. You can use this input device to select text. (5)
9. A Word Processor is used to type (4)
10. You need a printer to do this. (5)

Down

1. The keys that can move the cursor around. (5)
2. Text is placed at the cursor's location when you (4)
3. A file created by a Word Processor is called a(8)
4. Store your work on a disk. (4)
6. It blinks. (6)

10

8 (a) **Underline** the correct answer for each of the following statements.

- i) A group of computers connected to each other all over the world are called:
- Software
 - Internet
 - On-line service
 - Modem

ii) Visiting different websites is called:

- World Wide Web
- email address
- surfing the net

- iii) A huge collection of electronic pages containing information about many different subjects is called:
- World Wide Web
 - email address
 - surfing the net
- iv) The home page is displayed first when you get online.
- True
 - False
- v) The address for a Web page is called a URL.
- True
 - False
- vi) To log on to a network a user must supply
- Name and surname
 - Username and password
 - Account number
 - ID Number
- vii) What does URL stand for?
- United route link
 - Uniform Resource Locator
 - Unknown redirection link
 - Uniform
- viii) What is an ISP?
- Internet Setup Problem
 - Internet Service Provider
 - Internal subscription process
 - Internal System Process
- (b) Francesca wants to look up information about dinosaurs for her school project. She chooses the MSN search engine to find suitable websites.



- i) What software program is Francesca using, above?

- ii) What is the URL of the MSN website?
_____ 1
- iii) What is a search engine used for?
_____ 2
- iv) Francesca wants to make a printout of the search results. How does she go about it?
_____ 1
- v) Francesca now wants to visit the following website **http://www.gov.mt** Explain briefly what she does.

_____ 2
- vi) What happens when we use the *Back* button on the toolbar?
_____ 1
- vii) Why do we use the *Home* button on the toolbar?
_____ 1

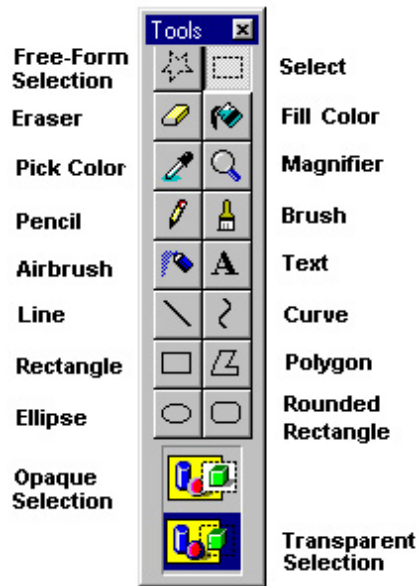
9 (a) Jason wants to send an e-mail to his friend to inform him that today he is not attending the training session at the gym. The letter is to be called 'Training' and his friend's email address is **kurt@schoolnet.gov.mt** Fill in the appropriate boxes marked * in the diagram below, including the short message, to send this e-mail.

- (b) Give TWO advantages and ONE disadvantage of email over normal postal mail.
 - 1st Advantage: _____
 - 2nd Advantage: _____
 - 1 Disadvantage: _____

- 10 (a) On the right you will find the Paint Toolbox with all the tool icons and tool names.

James creates the drawings shown below with the tools from the Toolbox. He also types his name.

Write down the names of the tools he uses in the boxes below next to the drawings.



		JAMES	

10

James wants to do some changes to the shapes he drew above.

- (b) Write down the name of the tool he uses to fill the shape with colour.



--

1

- (c) Write down the name of the tool he uses to rub off part of one of the shapes.



--

1