

# Junior Lyceum Annual Examinations 2003

Educational Assessment Unit – Education Division  
Malta

---

**Form 3 (option)**

**Computer Studies**

**Time 1hr 30min**

---

Name .....

Class.....

---

### *Directions to Candidates:*

*Answer ALL questions in Section A on this paper,  
Answer any TWO questions from Section B on separate foolscaps,  
The use of flow chart template is permitted,  
Calculators are NOT allowed,  
Good English and orderly presentation are important*

*For office use only:*

Q	1	2	3	4	5	6	7	8	9	10	11	12	13	14	Paper Total	Course Work	Final Mark
Max	5	5	5	5	5	5	5	5	5	5	5	15	15	15	85%	15%	100%
Mark																	

**Section A Answer all Questions**

- 1 Fill in the blanks with the correct numerical answer:
- a) In one **kilobyte** there are .....bytes.
  - b) In one **Megabyte** there are .....kilobytes.
  - c) In one **Gigabyte** there are ..... kilobytes
  - d) A modern Hard Disc drive can store ..... of data.
  - e) A floppy drive can store .....of data

[5]

- 2 Using the following items draw a block diagram of a computer system, showing clearly how data flows in the system.  
CPU, Input device, Output device, Main Memory, Secondary storage

[5]

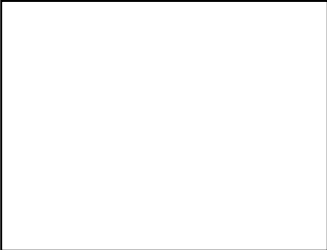
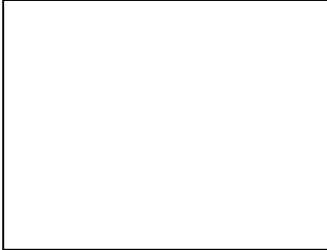
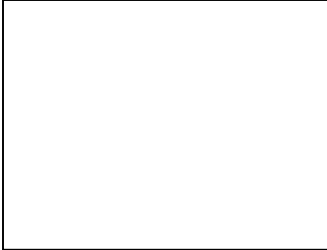


- 3 Explain the difference between the following terms:
- a) Hard copy and Soft copy \_\_\_\_\_  
\_\_\_\_\_  
\_\_\_\_\_ [1]
  - b) Analogue and Digital \_\_\_\_\_  
\_\_\_\_\_  
\_\_\_\_\_ [1]
  - c) Serial data transfer and Parallel data transfer \_\_\_\_\_  
\_\_\_\_\_  
\_\_\_\_\_ [1]
  - d) Vector device and Raster device \_\_\_\_\_  
\_\_\_\_\_  
\_\_\_\_\_ [1]
  - e) RAM and ROM \_\_\_\_\_  
\_\_\_\_\_  
\_\_\_\_\_ [1]

4 a) Explain what you understand by two state electronic devices  
\_\_\_\_\_  
\_\_\_\_\_ [1]

b) Give one example from everyday life of a two state device.  
\_\_\_\_\_ [1]

c) In the space provided below draw the symbol, truth table and write the Boolean formula for a two input AND gate

Symbol	Truth table	Boolean Formula
		

[3]

5 Write brief notes on the following input/output devices.

a) Qwerty Keyboard. \_\_\_\_\_  
\_\_\_\_\_ [1]

b) Touch screen \_\_\_\_\_  
\_\_\_\_\_ [1]

c) Barcode Reader \_\_\_\_\_  
\_\_\_\_\_ [1]

d) Explain how one of the above devices may be very useful to people with special needs.  
\_\_\_\_\_  
\_\_\_\_\_  
\_\_\_\_\_ [2]

6 Storage Devices fall under three main categories electronic, magnetic and optic.

Name :

a) Two electronic storage devices \_\_\_\_\_

b) Two magnetic storage devices \_\_\_\_\_

c) One Optic storage device \_\_\_\_\_

[1 mark each]

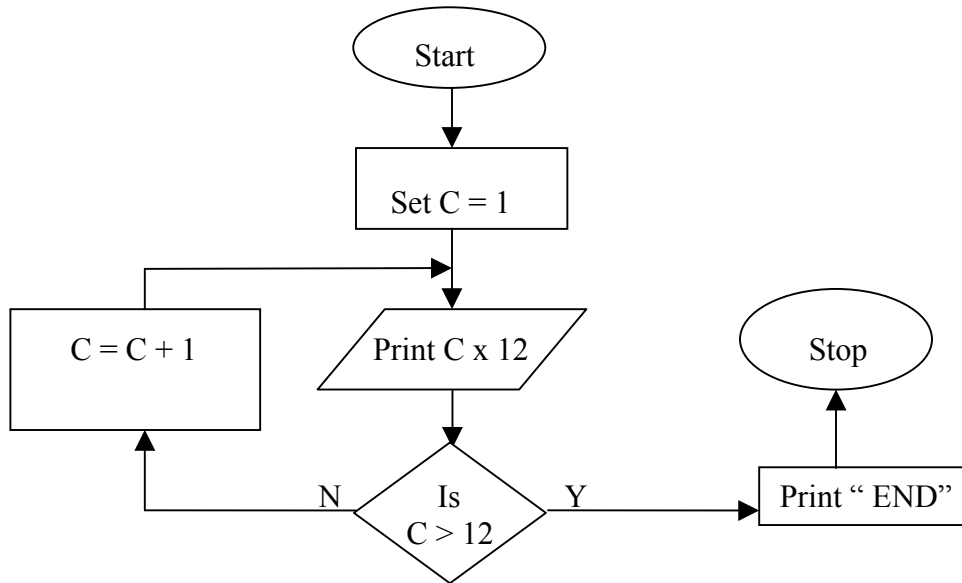
7 Fill in the blank spaces with appropriate words from the following list:

*Sectors, floppy, magnetic material, circular, retrieved, tracks, stored, electromagnetic, hard, formatted,*

A magnetic disk is a ..... disk made of plastic and coated with a layer of ..... on which data can be ..... or ..... This is done by ..... read / write heads. The disk may be rigid as in ..... disks or flexible as in ..... disks. When a disk is ..... it is arranged in a number of ..... and .....

[5]

8



a) The above flow chart represents an algorithm. Describe the process represented by the flow chart.

---



---



---

[2]

b) The table below shows the different stages of the above process, the first one is an example, fill in the other cells.

When C is equal to	the screen will show
1	12
2	
	60
13	

[3]

- 9 Describe what are the duties of the following personnel who work in a data processing organisation.
- Systems analyst: \_\_\_\_\_  
 \_\_\_\_\_  
 \_\_\_\_\_ [2]
- Programmer \_\_\_\_\_  
 \_\_\_\_\_  
 \_\_\_\_\_ [2]
- Data clerk. \_\_\_\_\_  
 \_\_\_\_\_  
 \_\_\_\_\_ [1]
- 10 a) When handling floppy discs the Windows Operating system provides us with some **utilities**. What do you understand by the term “utilities”?  
 \_\_\_\_\_  
 \_\_\_\_\_ [2]
- b) List and describe three (3) utilities that help us when using floppy discs
- 1) \_\_\_\_\_  
 \_\_\_\_\_
- 2) \_\_\_\_\_  
 \_\_\_\_\_
- 3) \_\_\_\_\_  
 \_\_\_\_\_ [3]
- 11 When data is transferred from the computer main memory to a printer it is stored in a buffer.
- a) Where is this buffer usually found ? \_\_\_\_\_ [1]
- b) Explain why it is necessary to have such a buffer between the CPU and the printer?  
 \_\_\_\_\_  
 \_\_\_\_\_  
 \_\_\_\_\_ [4]

**Section B Answer two questions on a separate foolscaps**

- 12 Write a Pascal program that allows a user to input two numbers. The user is then asked to enter a choice in the form of a menu. This menu allows user choose one option from the following:

Addition  
Subtraction  
Multiplication  
Division  
Exit

The program will then process the mathematical operation chosen and print the two inputted numbers and the answer. Make the program user friendly, include in line comments to make the program understandable and pay attention to correct Pascal syntax

[15]

- 13 *This question is about spreadsheets*
- a) With the help of examples describe and name the three types of data that can be stored in a spreadsheet cell. [3]
- b) Describe a situation where a spreadsheet is most suitable way of handling data. What makes spreadsheets so useful? [4]
- c) With the help of examples write notes on **two** of the following spreadsheet utilities:
- i) Formulas and functions
  - ii) Sorting a set of data using properties in one column
  - iii) Creating a chart to represent data in picture form [4]
- d) Explain how **mail merge** allows you to send a word-processed letter, to a number of persons listed in a spreadsheet. [4]
- 14 a) What is an algorithm? [1]
- b) Explain with the help of diagrams what you understand by:
- (i) Step by step process
  - (ii) A loop
  - (iii) A decision [6]
- c) Design a flow chart or develop pseudo-code that describes an algorithm which allows the user to input 5 (five) numbers which are in the range  $0 \leq \text{number} \leq 100$  and then prints the largest of these numbers. [8]