



## Coimisiún na Scrúduithe Stáit

SCRÚDÚ NA hARDTEISTIMÉIREACHTA 2006

M49T

SCRÍOBH DO SCRÚDUIMHIR ANSEO 

**CEOL - GNÁTHLEIBHÉAL**

**CUMADÓIREACTH (100 marc)**

**DÉARDAOIN 22 MEITHEAMH - TRÁTHNÓNA, 2.00 go dtí 3.30**

STAMPA AN IONAIÐ

**DON SCRÚDAITHEOIR**

Móriomlán na  
Marcanna

### TREORACHA D'IARRTHÓIRÍ

- ☐ Scríobhtar do scrúduimhir, mar a iarrtar, sa bhosca thuas.
- ☐ Freagair na ceisteanna sna spásanna atá ann dóibh sa fhreagarleabhar seo.
- ☐ Is féidir leas a bhaint as na spásanna i lár agus i ndeireadh an fhreagarleabhair do shracobair.

| CEIST     | MARC |
|-----------|------|
| 1         |      |
| 2         |      |
| 3         |      |
| 4         |      |
| 5         |      |
| 6         |      |
| MÓRIOMLÁN |      |
| GRÁD      |      |

|  |  |
|--|--|
| 1. Suim na n-iomlán deireadh leathanaigh         |  |
| 2. Móriomlán na gceisteanna/ceiste nár ceadaíodh |  |
| 3. An t-ollmharc cruinn a bronnadh (1 lúide 2)   |  |

# **LEATHANACH BÁN**

**Freagair DHÁ cheist – CEANN AMHÁIN as Roinn A (Cumadóireacht Séise) agus CEANN AMHÁIN as Roinn B (Armóin)**

**ROINN A – CUMADÓIREACHT SÉISE (40 Marc)**

*Gan ach CEIST AMHÁIN a fhreagairt sa roinn seo: C1 nó C2 nó C3. Tabhair faoi deara go bhfuil dhá chuid i C1 agus C3 araon.*

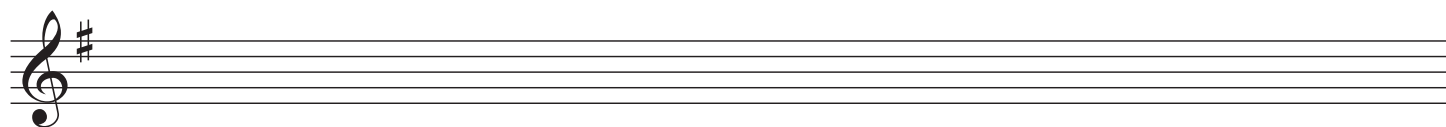
**C.1 LEANÚINT D’OSCAILT A THUGTAR**

I gcás (a) agus (b) araon,

- Lean ar aghaidh leis an oscailt a thugtar chun séis ocht mbarra a dhéanamh, ag críochnú ar an ngléasnóta, is é sin, dó.
- Cuir isteach comharthaí mírithe agus mothúcháin cuí leis an tséis.
- Roghnaigh uirlis oiriúnach do gach ceann de do shéiseanna as an liosta a thugtar:

(a) ☐ óbó ☐ veidhlín ☐ trumpa ☐ cláirnéid

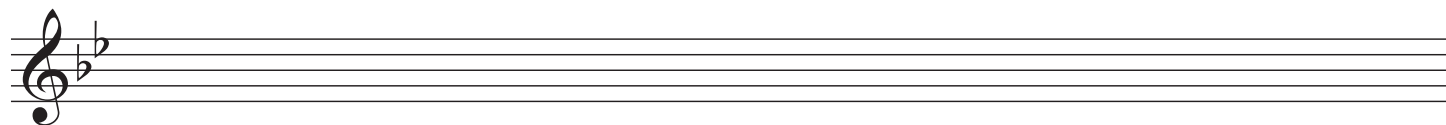
**Moderato**



**AGUS**

(b) ☐ óbó ☐ flúit ☐ trumpa ☐ corn

**Andante**



## C.2 CEOL A CHUR LE TÉACS A THUGTAR

Seo a leanas sliocht as an dán *Tuairimí* le Liam Gógán.

Sin é an marbh

'Na luí ar lic

Chomh nocht le n'fheadar

Chomh bocht le luich.

- Cuireadh rithim leis an gcéad líne thíos. Cum rithim a oireann do na focail atá fágtha.

**3**  
**4**

Sin      é      an      mar      -      bh

'Na      luí      ar      lic

Chomh      nocht      le      n' - fheadar

Chomh      bocht      le      luich.

- Ag baint úsáide as an rithim seo, cum séis ocht mbarra, ag tosnú mar atá léirithe agus ag críochnú ar an ngléas nóta, is é sin, dó.

- Cuir isteach comharthaí mírithe agus mothúcháin cuí leis an tséis.

Sin      é      an      mar      -      bh

### C.3 CUMADÓIREACHT DO RITHIM NÓ DO MHEADARACHT NÓ D'FHOIRM DAMHSA A THUGTAR

Freagair (a) agus (b).

(a) Déan staidéar ar an oscailt minite seo.

- Comhlánaigh an chéad mhír.
- Cum mír a fhreagraíonn di, ag críochnú ar an ngléasnóta, is é sin, dó.
- Cuir míriú agus dinimic chuí leis an tséis.
- Roghnaigh uirlis oiriúnach le haghaidh do shéise as an liosta seo a leanas:

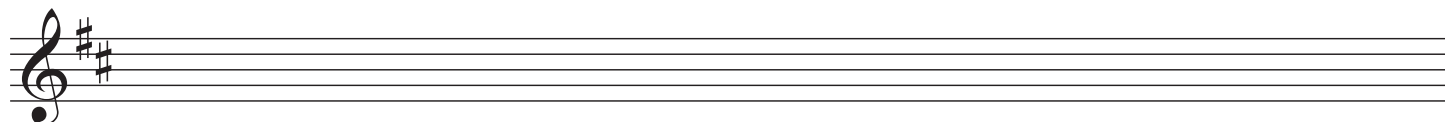
☐ óbó

☐ cláirnéid

☐ veidhlín

☐ corn

**Moderato**



**AGUS**

(b) Déan staidéar ar an oscailt máirseála seo.

- Comhlánaigh an chéad mhír.
- Cum mír a fhreagraíonn di, ag críochnú ar an ngléasnóta, is é sin, dó.
- Cuir míriú agus dinimic chuí leis an tséis.
- Roghnaigh uirlis oiriúnach le haghaidh do shéise as an liosta seo a leanas:

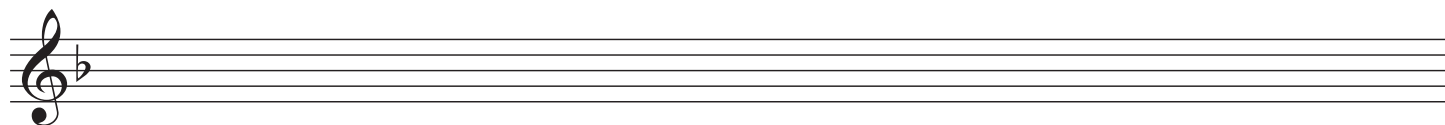
☐ óbó

☐ fliúit

☐ veidhlín

☐ corn

**Moderato**



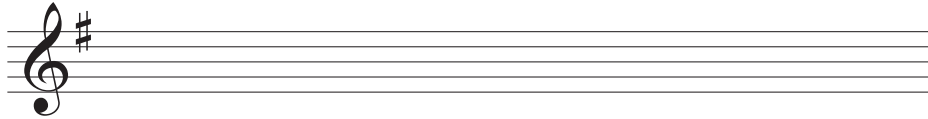
## ROINN B – ARMÓIN (60 marc)

Gan ach CEIST AMHÁIN a fhreagairt sa roinn seo: C4 nó C5 nó C6

### C.4 CUMADÓIREACHT NÓTAÍ SÉISE AGUS DOIRD Ó SHRAITH CORDAÍ

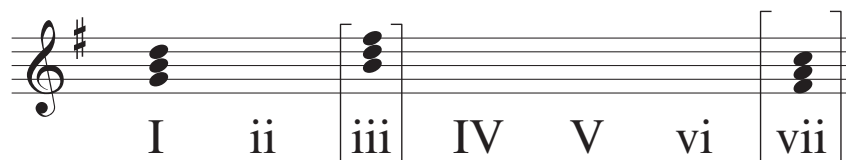
#### RÉAMHOBAIR

- Scríobh amach scála mórghléas G ar an gcliath thíos:

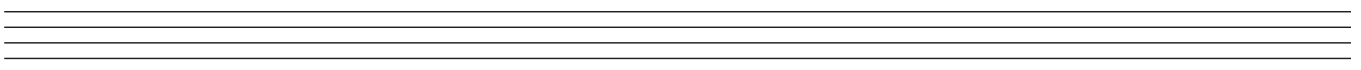
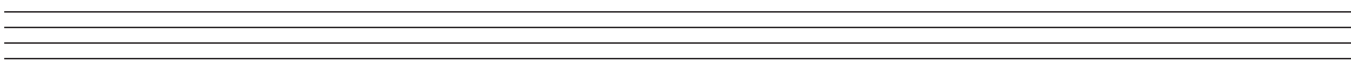
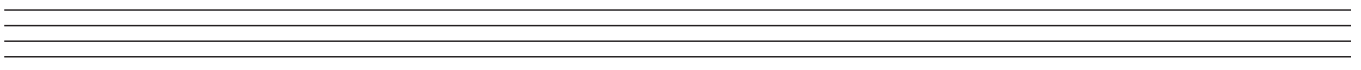


- Rianaigh na cordaí atá ann sa ghléas seo (I, ii, IV, V, agus vi) i ngreille an chordbhainc nó ar an gcliath thíos. Tugtar an chéad chorda.

|                  |   |    |     |    |   |    |                    |
|------------------|---|----|-----|----|---|----|--------------------|
| Nótaí an chorda  | D |    | F#  |    |   |    | C                  |
|                  | B |    | D   |    |   |    | A                  |
|                  | G |    | B   |    |   |    | F#                 |
| Siombail chorda  | G |    | Bm  |    |   |    | F# <sub>lagh</sub> |
| Uimhir Rómhánach | I | ii | iii | IV | V | vi | vii                |



#### SRACOBAIR



• Déan staidéar ar an dréacht ceoil seo a leanas.

• Ag baint úsáide as na rithimí a thugtar, cuir isteach nótaí séise agus doird chun na dúntaí agus na réamhchordaí a chomhlánú mar seo a leanas:

(i) Ag A, dúnadh BRISTE le réamhchorda (ii – V – vi)

(ii) Ag B, dúnadh TÁNAISTEACH le réamhchorda (ii – IV – I)

(iii) Ag C, LEATHDHÚNADH le réamhchorda (I – IV – V)

(iv) Ag D, LÁNDÚNADH le réamhchorda (ii – V – I)

System A: Measures 1-4. Treble clef, key of D major (F#), 4/4 time. Bass clef, key of D major (F#), 4/4 time. Measure 1: Treble (D4, E4, F#4, G4), Bass (D3, E3, F#3, G3). Measure 2: Treble (A4, B4, C5, B4), Bass (A2, B2, C3, D3). Measure 3: Treble (D5, C5, B4, A4), Bass (E3, F#3, G3, A3). Measure 4: Treble (G4, F#4, E4, D4), Bass (F#3, E3, D3, C3). A bracket labeled 'A' spans measures 3 and 4.

System B: Measures 5-8. Treble clef, key of D major (F#), 4/4 time. Bass clef, key of D major (F#), 4/4 time. Measure 5: Treble (D4, E4, F#4, G4), Bass (D3, E3, F#3, G3). Measure 6: Treble (A4, B4, C5, B4), Bass (A2, B2, C3, D3). Measure 7: Treble (D5, C5, B4, A4), Bass (E3, F#3, G3, A3). Measure 8: Treble (G4, F#4, E4, D4), Bass (F#3, E3, D3, C3). A bracket labeled 'B' spans measures 7 and 8.

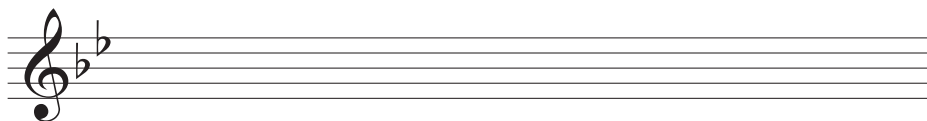
System C: Measures 9-12. Treble clef, key of D major (F#), 4/4 time. Bass clef, key of D major (F#), 4/4 time. Measure 9: Treble (D4, E4, F#4, G4), Bass (D3, E3, F#3, G3). Measure 10: Treble (A4, B4, C5, B4), Bass (A2, B2, C3, D3). Measure 11: Treble (D5, C5, B4, A4), Bass (E3, F#3, G3, A3). Measure 12: Treble (G4, F#4, E4, D4), Bass (F#3, E3, D3, C3). A bracket labeled 'C' spans measures 11 and 12.

System D: Measures 13-16. Treble clef, key of D major (F#), 4/4 time. Bass clef, key of D major (F#), 4/4 time. Measure 13: Treble (D4, E4, F#4, G4), Bass (D3, E3, F#3, G3). Measure 14: Treble (A4, B4, C5, B4), Bass (A2, B2, C3, D3). Measure 15: Treble (D5, C5, B4, A4), Bass (E3, F#3, G3, A3). Measure 16: Treble (G4, F#4, E4, D4), Bass (F#3, E3, D3, C3). A bracket labeled 'D' spans measures 15 and 16.

## C.5 DORDNÓTAÍ AGUS COMHARTHAÍ CORDA A CHUR ISTEACH AG POINTÍ DÚNTA

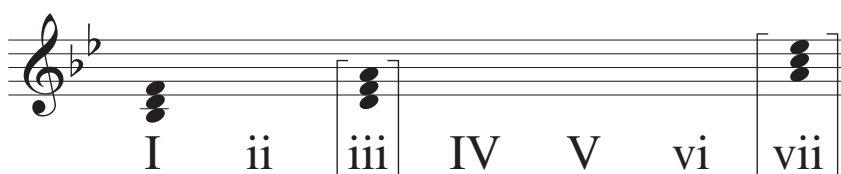
### RÉAMHOBAIR

- Scríobh amach scála mórghléas B $\flat$  ar an gcliath thíos:

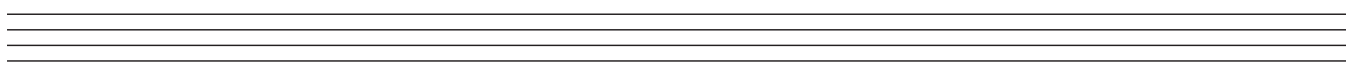
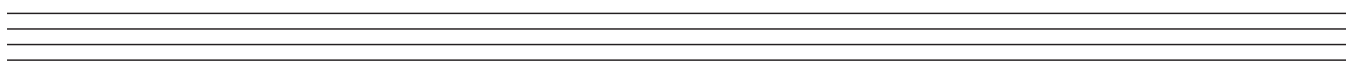
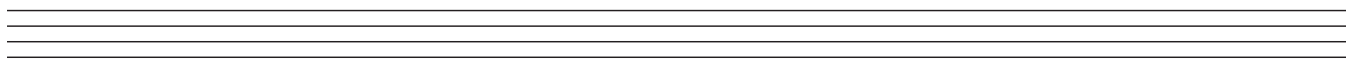


- Rianaigh na cordaí atá ann sa ghléas seo (I, ii, IV, V, agus vi) i ngreille an chordbhainc *nó* ar an gcliath thíos. Tugtar an chéad chorda.

|                  |                     |    |             |    |   |    |                     |
|------------------|---------------------|----|-------------|----|---|----|---------------------|
| Nótaí an chorda  | F<br>D<br>B $\flat$ |    | A<br>F<br>D |    |   |    | E $\flat$<br>C<br>A |
| Siombail chorda  | B $\flat$           |    | Dm          |    |   |    | A $\flat$ agh       |
| Uimhir Rómhánach | I                   | ii | iii         | IV | V | vi | vii                 |



### SRACOB AIR





- Déan staidéar ar an dréacht ceoil seo a leanas.
- Cuir isteach nótaí doird agus comharthaí corda cuí chun na dúntaí ag A, B, C agus D a chomhlánú.
- Is féidir úsáid a bhaint as siombailí corda *nó* uimhreacha Rómhánacha, ach ná baintear úsáid astu araon.
- Má roghnaíonn tú uimhreacha Rómhánacha, bain úsáid as na *mionuimhreacha* do *mhionchordaí* (ii, vi).

A

B

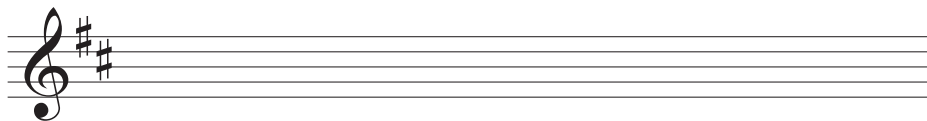
C

D

## C.6 NÓTAÍ FORSHÉISE AGUS COMHARTHAÍ CORDA A CHUR ISTEACH AG POINTÍ DÚNTA

### RÉAMHOBAIR

- Scríobh amach scála mórghléas D ar an gcliath thíos:

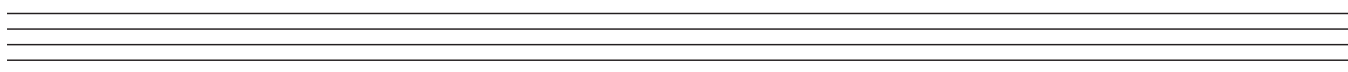
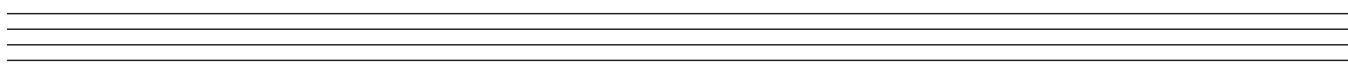
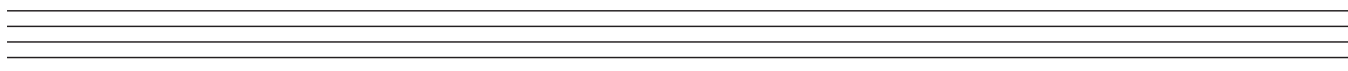


- Rianaigh na cordaí atá ann sa ghléas seo (I, ii, IV, V, agus vi) i ngreille an chordbhainc *nó* ar an gcliath thíos. Tugtar an chéad chorda.

|                  |              |    |               |    |   |    |                    |
|------------------|--------------|----|---------------|----|---|----|--------------------|
| Nótaí an chorda  | A<br>F#<br>D |    | C#<br>A<br>F# |    |   |    | G<br>E<br>C#       |
| Siombail chorda  | D            |    | F#m           |    |   |    | C# <sub>lagh</sub> |
| Uimhir Rómhánach | I            | ii | iii           | IV | V | vi | vii                |



### SRACOBAIR



- Déan staidéar ar an dréacht ceoil seo a leanas.
- Comhlánaigh na mírdheirí ag cur cordaí oiriúnacha agus nótaí forshéise leo ag A, B, C agus D.
- Is féidir úsáid a bhaint as siombailí corda *nó* uimhreacha Rómhánacha, ach ná baintear úsáid astu araon.
- Má roghnaíonn tú uimhreacha Rómhánacha, bain úsáid as na *mionuimhreacha* do na *mionchordaí* (ii, vi).

Forshéis

Séis

Dord

A

B

C

D



**SRACOB AIR**

---

---

---

---

---

---

---

---

---

---

---

---

---

---

---

---

---

---

---

---

---

---

---

---

---

---

---

---

---

---

---

---

---

---

---

---

---

---

---

---

---

---

---

---

---

---

---

---

---

---

---

---

---

**SRACOB AIR**

---

---

---

---

---

---

---

---

---

---

---

---

---

---

---

---

---

---

---

---

---

---

---

---

---

---

---

---

---

---

---

---

---

---

---

---

---

---

---

---

---

---

---

---

---

---

---

---

---

---

---

---

# SRACOB AIR

|  |
|--|
|  |
|  |
|  |
|  |

|  |
|--|
|  |
|  |
|  |
|  |

|  |
|--|
|  |
|  |
|  |
|  |

|  |
|--|
|  |
|  |
|  |
|  |

|  |
|--|
|  |
|  |
|  |
|  |

|  |
|--|
|  |
|  |
|  |
|  |

|  |
|--|
|  |
|  |
|  |
|  |

|  |
|--|
|  |
|  |
|  |
|  |

|  |
|--|
|  |
|  |
|  |
|  |

|  |
|--|
|  |
|  |
|  |
|  |

|  |
|--|
|  |
|  |
|  |
|  |

# **LEATHANACH BÁN**