



Coimisiún na Scrúduithe Stáit
State Examinations Commission

LEAVING CERTIFICATE EXAMINATION 2006

M49

WRITE YOUR EXAMINATION NUMBER HERE 

MUSIC – ORDINARY LEVEL
COMPOSING (100 marks)
THURSDAY 22 JUNE – AFTERNOON, 2.00 to 3.30

STAMPA AN IONAIID
(Centre Stamp)

Móriomlán na
Marcanna

DON SCRÚDAITHEOIR

CEIST	MARC
1	
2	
3	
4	
5	
6	
MÓRIOMLÁN	
GRÁD	

INSTRUCTIONS TO CANDIDATES

- Write your examination number, as required, in the box above.
- Answer the questions in the spaces provided in this question-answer book.
- You may use the spaces in the middle and at the end of the question-answer book for rough work.

1. Total of end of page totals	
2. Aggregate total of all disallowed question(s)	
3. Total mark awarded (1 minus 2)	

BLANK PAGE

SECTION A – MELODY COMPOSITION (40 marks)

Answer ONE QUESTION ONLY in this section: Q1 or Q2 or Q3. Note that both Q1 and Q3 contain two sections.

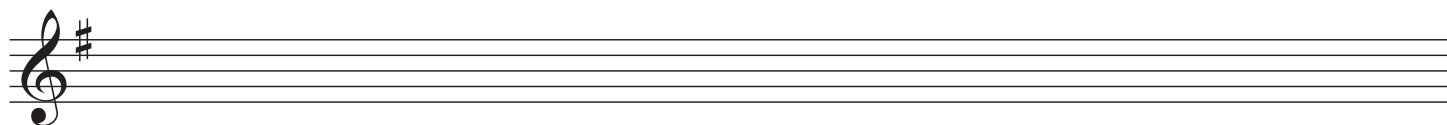
Q.1 CONTINUATION OF A GIVEN OPENING

In the case of both (a) and (b),

- Continue the given opening to make an eight-bar melody, ending on the keynote, that is, doh.
- Add appropriate phrasing and expression marks to the melody.
- Choose a suitable instrument for each of your melodies from the list given:

(a) oboe violin trumpet clarinet

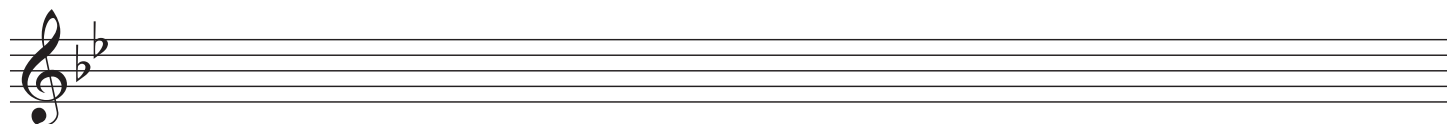
Moderato



AND

(b) oboe flute trumpet horn

Andante



Q.2 SETTING MUSIC TO A GIVEN TEXT

Here is an extract from *Where go the Boats?* by Robert Louis Stevenson.

Dark brown is the river,

Golden is the sand.

It flows along for ever,

With trees on either hand.

- The first line has been set to a rhythm. Compose a rhythm to fit the remaining words.

Dark brown is the____ riv - er

gold - en is the sand, it

flows a - long for ev - er, with

trees on ei - ther hand.

- Using this rhythm, compose a melody of eight bars, beginning as indicated and ending on the key note, that is, doh.

- Add appropriate phrasing and expression marks to the melody.

Dark brown is the____ riv - er,

Q.3 COMPOSING TO A GIVEN DANCE RHYTHM OR METRE OR FORM

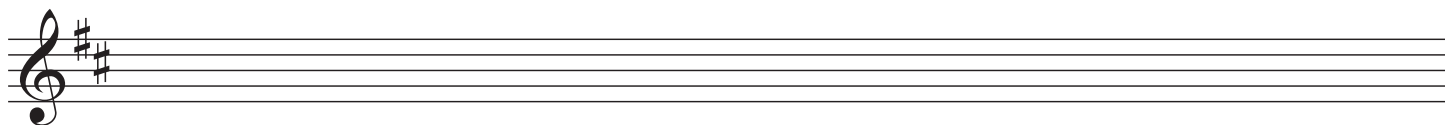
Answer (a) *and* (b).

(a) Study this opening of a minuet.

- Complete the first phrase.
- Compose an answering phrase, ending on the keynote, that is, doh.
- Add appropriate phrasing and dynamics to the melody.
- Choose a suitable instrument for your melody from the following list:

oboe clarinet violin horn

Moderato



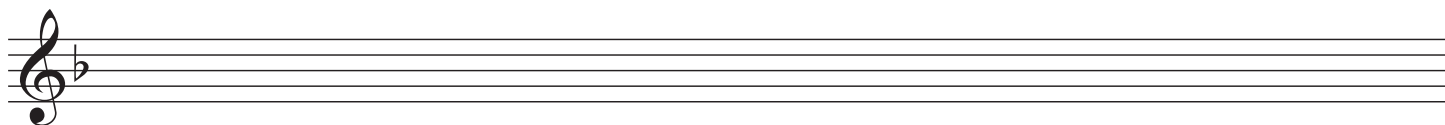
AND

(b) Study this opening of a march.

- Complete the first phrase.
- Compose an answering phrase, ending on the keynote, that is, doh.
- Add appropriate phrasing and dynamics to the melody.
- Choose a suitable instrument for your melody from the following list:

oboe flute violin horn

Moderato



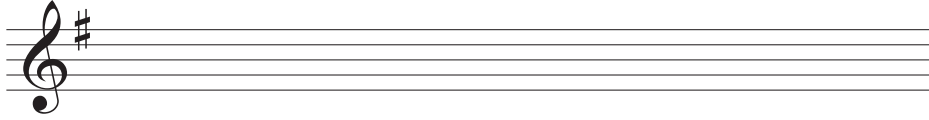
SECTION B – HARMONY (60 marks)

Answer ONE QUESTION ONLY in this section: Q4 or Q5 or Q6

Q.4 COMPOSING MELODY AND BASS NOTES FROM A SET OF CHORDS

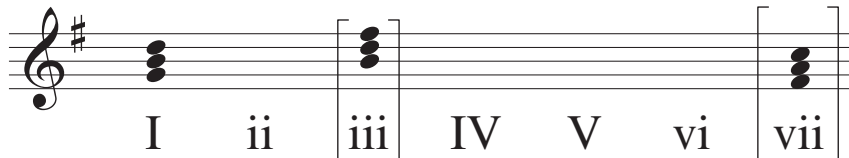
PREPARATORY WORK

- Write out the scale of G major on the staff below:

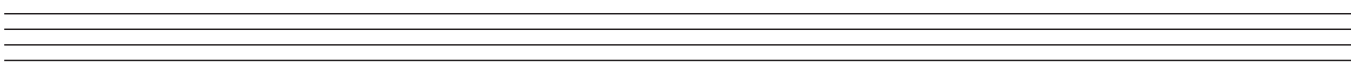
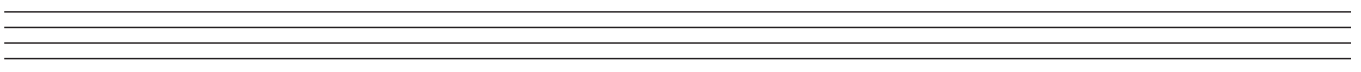
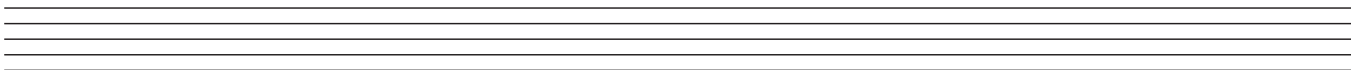


- Plot the chords available in this key (I, ii, IV, V, and vi) either in the chord bank grid *or* on the staff below. The first chord is given.

Notes of chord	D		F#				C
	B		D				A
	G		B				F#
Chord symbol	G		Bm				F#dim
Roman numeral	I	ii	iii	IV	V	vi	vii



ROUGH WORK



• Study the following piece of music.

• Using the given rhythms, add melody and bass notes to complete the cadences and approach chords as follows:

(i) At A, an INTERRUPTED cadence with approach chord (ii—V—vi)

(ii) At B, a PLAGAL cadence with approach chord (ii—IV—I)

(iii) At C, an IMPERFECT cadence with approach chord (I—IV—V)

(iv) At D, a PERFECT cadence with approach chord (ii—V—I)

Exercise A: A piano score in 4/4 time, key of D major. The first three measures contain a melody in the treble clef and a bass line in the bass clef. The fourth measure is a blank staff with a bracket above it labeled 'A' and three quarter notes (D4, E4, F#4) indicating the rhythm to be added.

Exercise B: A piano score in 4/4 time, key of D major. The first three measures contain a melody in the treble clef and a bass line in the bass clef. The fourth measure is a blank staff with a bracket above it labeled 'B' and three quarter notes (D4, E4, F#4) indicating the rhythm to be added.

Exercise C: A piano score in 4/4 time, key of D major. The first three measures contain a melody in the treble clef and a bass line in the bass clef. The fourth measure is a blank staff with a bracket above it labeled 'C' and three quarter notes (D4, E4, F#4) indicating the rhythm to be added.

Exercise D: A piano score in 4/4 time, key of D major. The first three measures contain a melody in the treble clef and a bass line in the bass clef. The fourth measure is a blank staff with a bracket above it labeled 'D' and three quarter notes (D4, E4, F#4) indicating the rhythm to be added.

Q.5 ADDING BASS NOTES AND CHORD INDICATIONS AT CADENCE POINTS

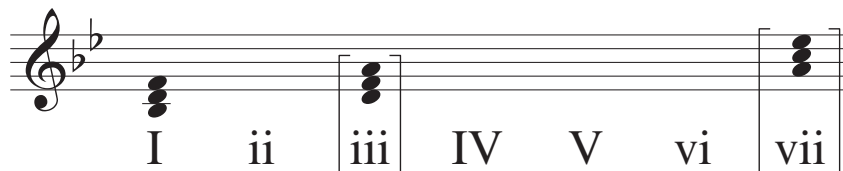
PREPARATORY WORK

- Write out the scale of B \flat major on the staff below:

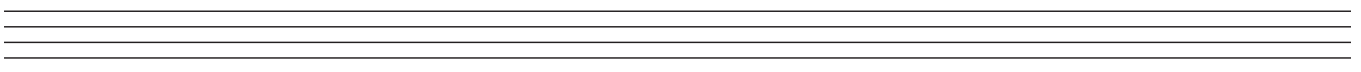
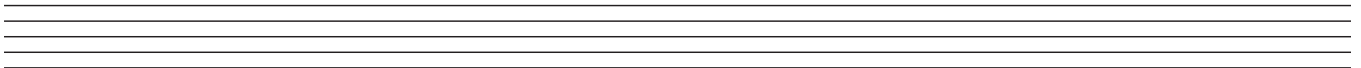


- Plot the chords available in this key (I, ii, IV, V, vi) either in the chord bank grid *or* on the staff below. The first chord is given.

Notes of chord	F D B \flat		A F D				E \flat C A
Chord symbol	B \flat		Dm				A ^{dim}
Roman numeral	I	ii	iii	IV	V	vi	vii



ROUGH WORK



- Study the following piece of music.
- Add suitable bass notes and chord indications to complete the cadences at A, B, C and D.
- You may use either chord symbols *or* Roman numerals, but not both.
- If you choose Roman numerals, use *lower case* for *minor* chords (ii, vi).

A

B

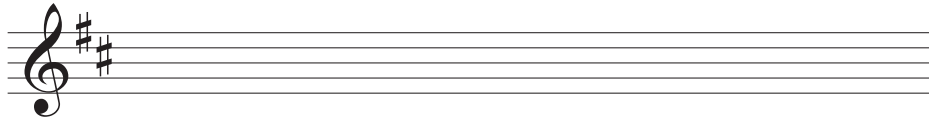
C

D

Q.6 ADDING DESCANT NOTES AND CHORD INDICATIONS AT CADENCE POINTS

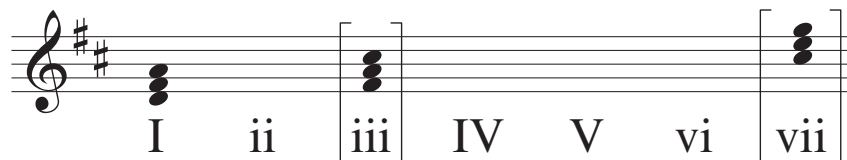
PREPARATORY WORK

- Write out the scale of D major on the staff below:

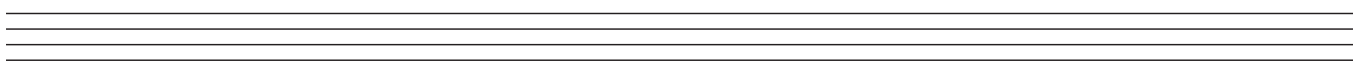
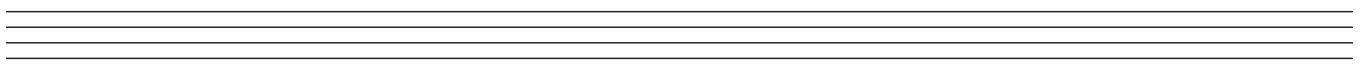
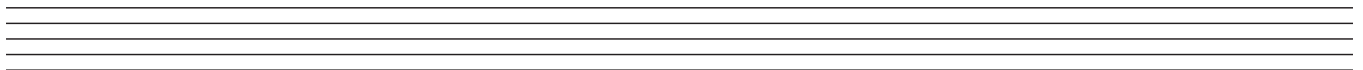


- Plot the chords available in this key (I, ii, IV, V, vi) either in the chord bank grid *or* on the staff below. The first chord is given.

Notes of chord	A F# D		C# A F#				G E C#
Chord symbol	D		F#m				C#dim
Roman numeral	I	ii	iii	IV	V	vi	vii



ROUGH WORK



- Study the following piece of music.
- Complete the phrase endings by adding suitable chords and descant notes at A, B, C and D.
- You may use either chord symbols *or* Roman numerals, but not both.
- If you choose Roman numerals, use *lower case* for *minor* chords (ii, vi).

Descant

Melody

Bass

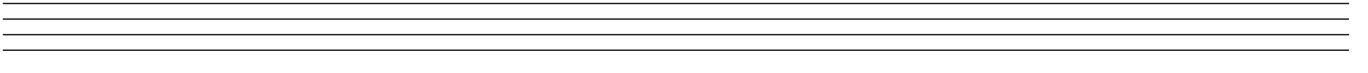
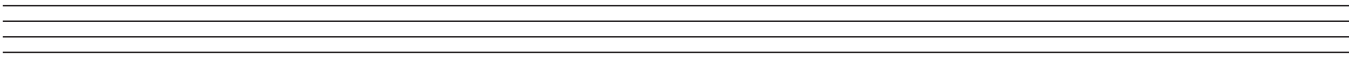
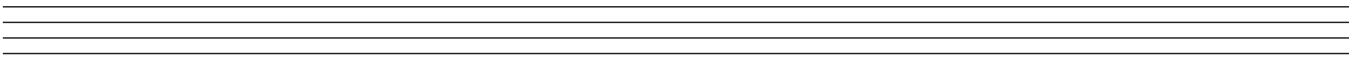
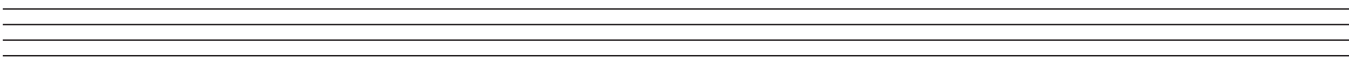
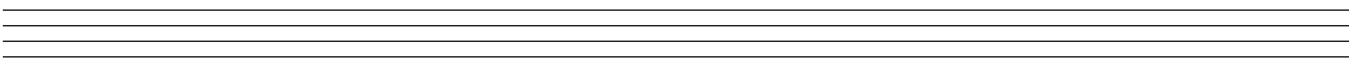
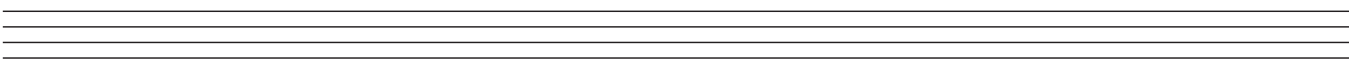
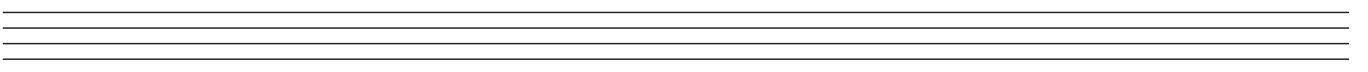
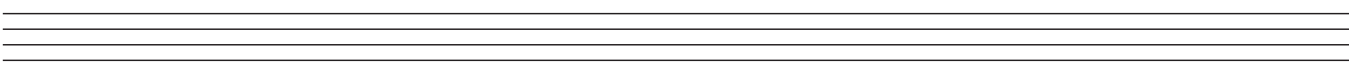
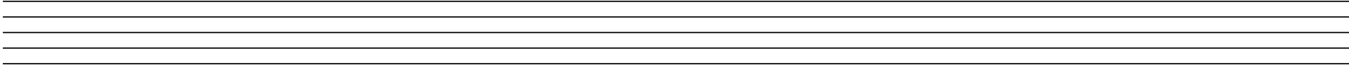
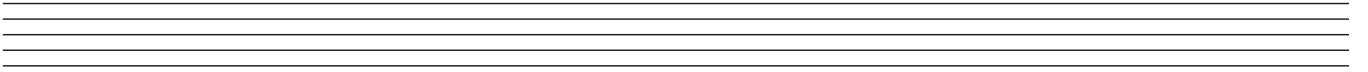
A

B

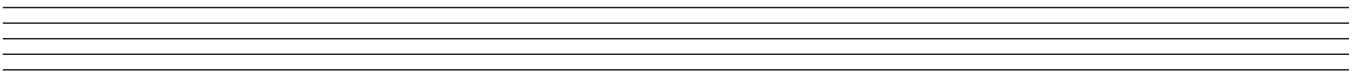
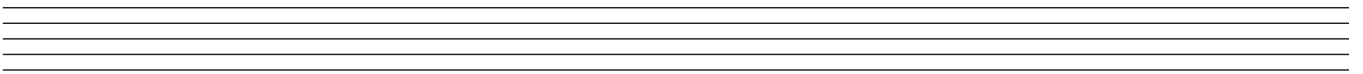
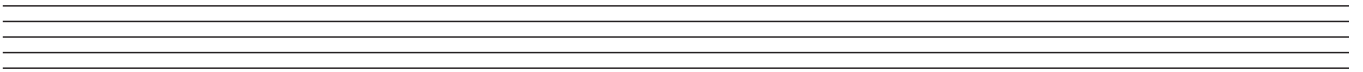
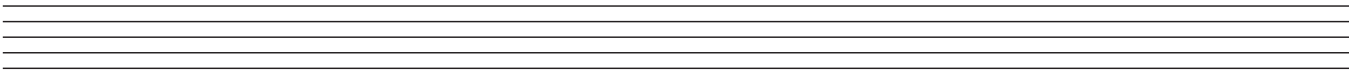
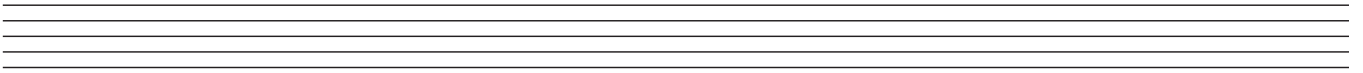
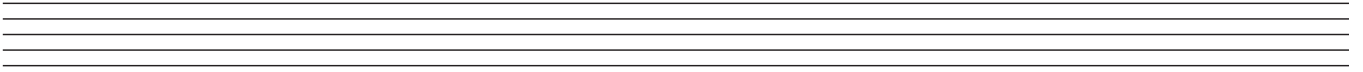
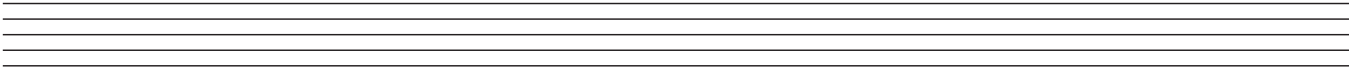
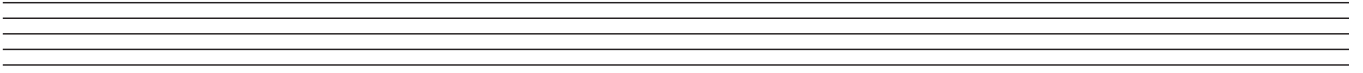
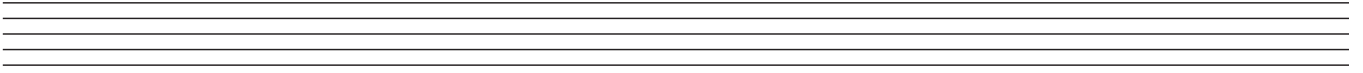
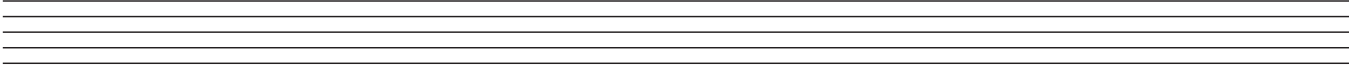
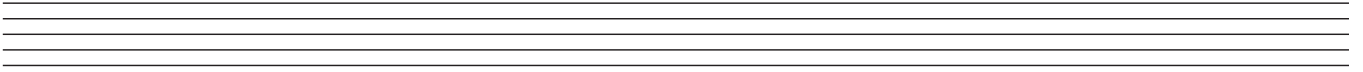
C

D

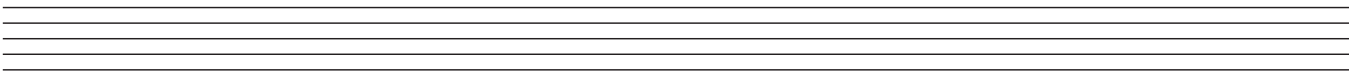
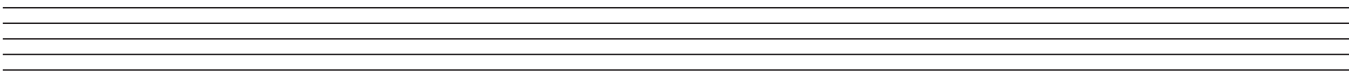
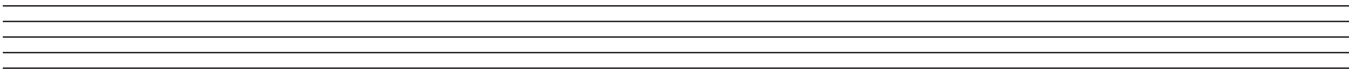
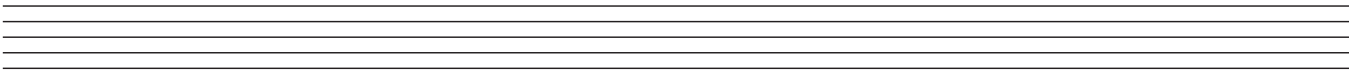
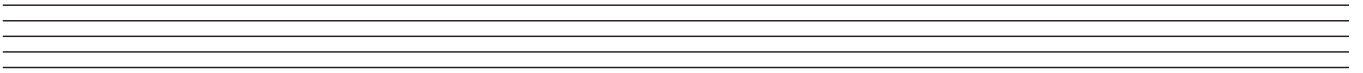
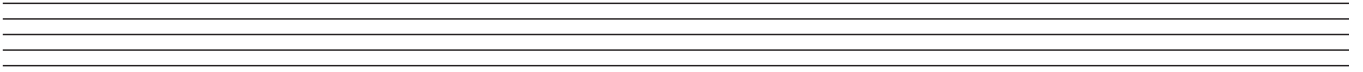
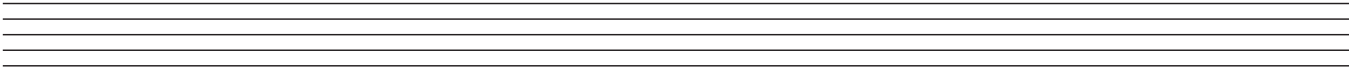
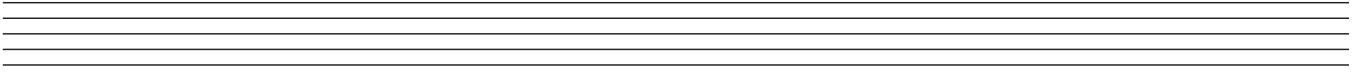
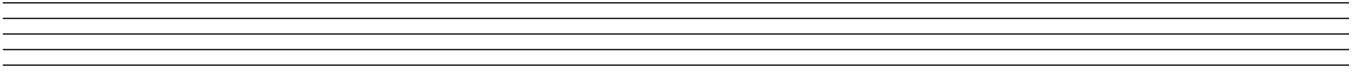
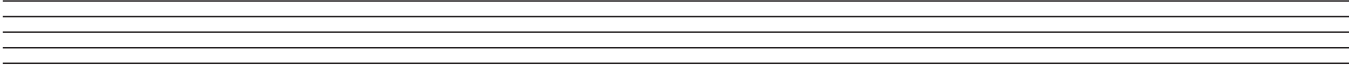
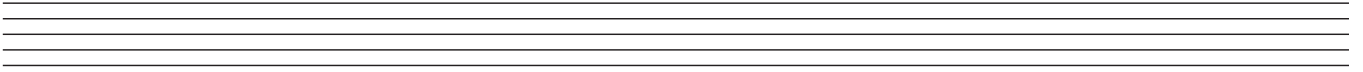
ROUGH WORK



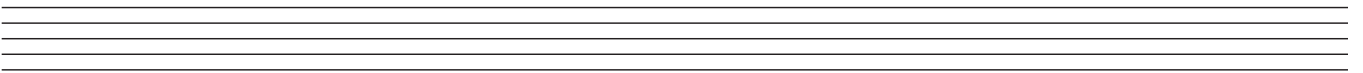
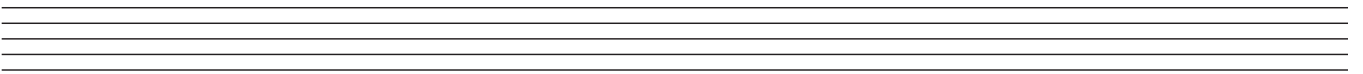
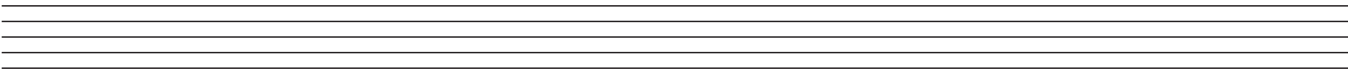
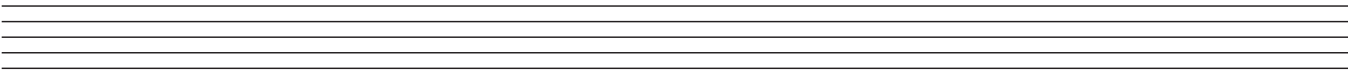
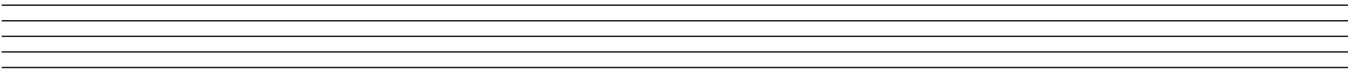
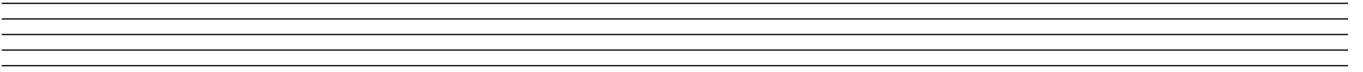
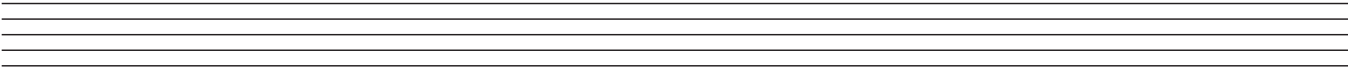
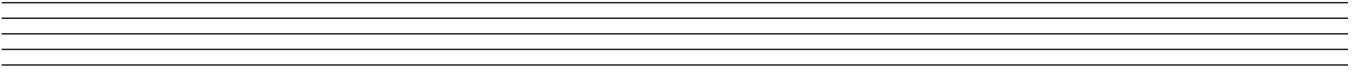
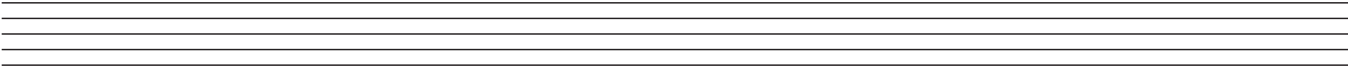
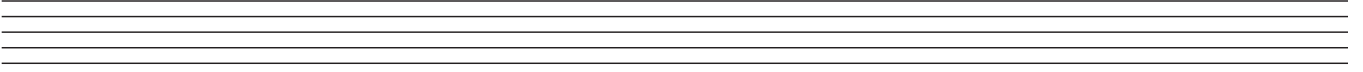
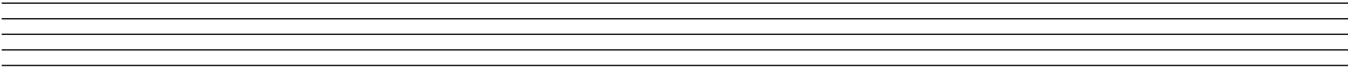
ROUGH WORK



ROUGH WORK



ROUGH WORK



BLANK PAGE