



Coimisiún na Scrúduithe Stáit
SCRÚDÚ NA hARDTEISTIMÉIREACHTA, 2008

SCRÍOBH DO SCRÚDUIMHIR ANSEO 

CEOL – ARDLEIBHÉAL
CUMADÓIREACHT (100 marc)
DÉARDAOIN, 19 MEITHEAMH – TRÁTHNÓNA, 1.30 go dtí 3.00

STAMPA AN IONAIID

DON SCRÚDAITHEOIR

Móriomlán na
Marcanna

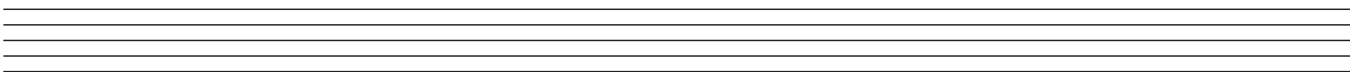
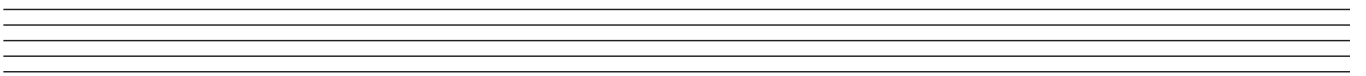
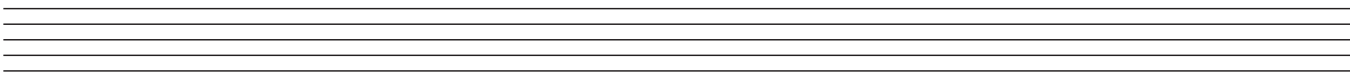
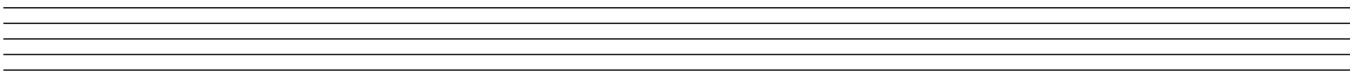
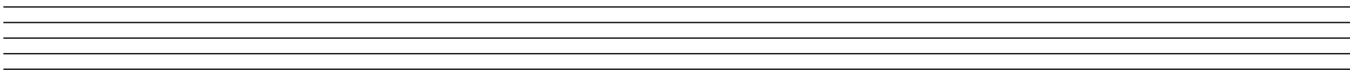
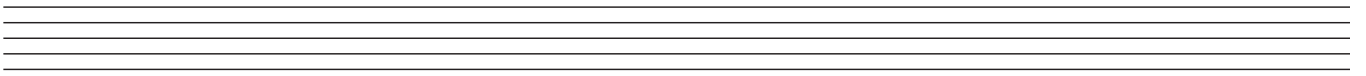
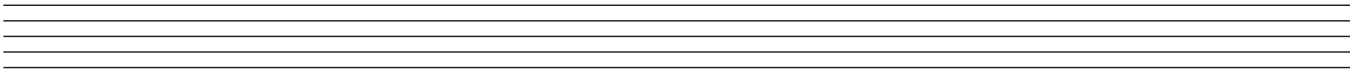
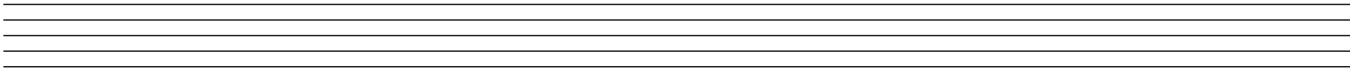
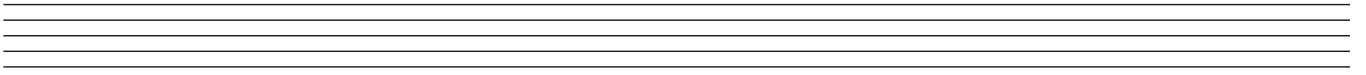
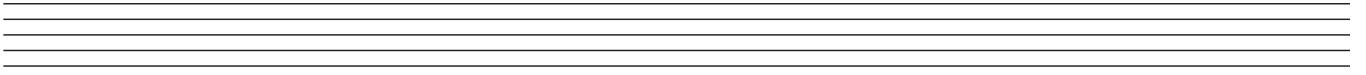
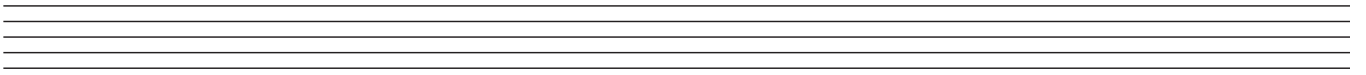
CEIST	MARC
1	
2	
3	
4	
5	
6	
IOM	
GRÁD	

TREORACHA D'IARRTHÓIRÍ

- Scríobhtar do scrúduimhir, mar a iarrtar, sa bhosca thuas.*
 - Freagair na ceisteanna sna spásanna atá ann dóibh sa fhreagarleabhar seo.*
 - Tá sé ceadaithe na spásanna i lár agus ag deireadh an fhreagarleabhair a úsáid don sracobair.*
-

1. Iomlán na n-iomlán bunleathanaigh	
2. Iomlán carnach na gceisteanna uile a dícheadaíodh	
3. Marc iomlán a bronnadh (1 lúide 2)	

SRACOB AIR



Freagair DHÁ cheist – CEANN AMHÁIN as Roinn A (Cumadóireacht Séise) agus CEANN AMHÁIN as Roinn B (Armóin)

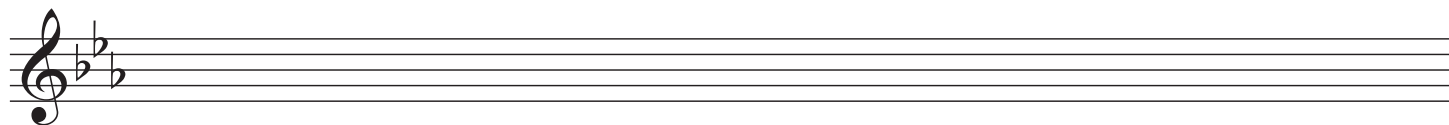
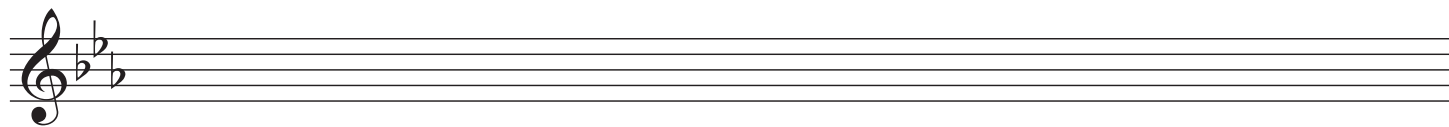
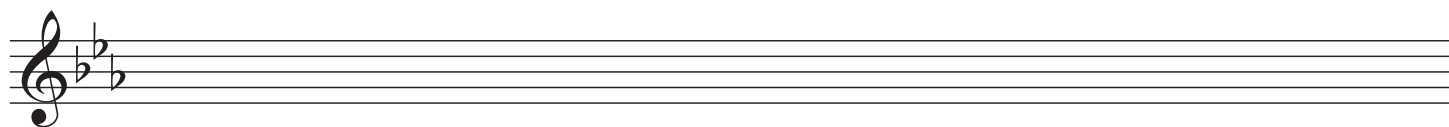
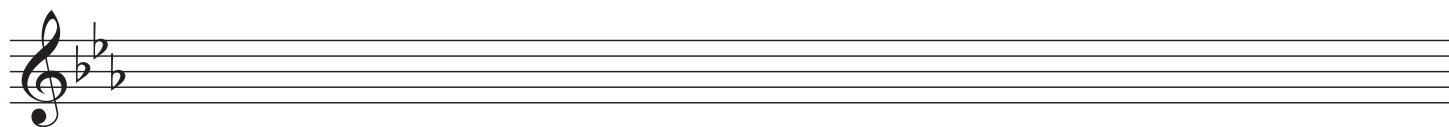
ROINN A – CUMADÓIREACHT SÉISE (40 marc)

GAN ACH CEIST AMHÁIN a fhreagairt sa roinn seo: C1 nó C2 nó C3

C.1 LEANÚINT D’OSCAILT A THUGTAR

- Lean ar aghaidh leis an oscailt a thugtar chun séis 16 bharr a dhéanamh.
- Cuir treoracha ceolchasaídh cúí (míriú agus dinimic) leis an tséis.
- Roghnaigh uirlis oiriúnach le haghaidh do shéise as an liosta seo a leanas:

veidhlín óbó corn flúit



C.2 CEOL A CHUR LE TÉACS A THUGTAR

Seo sliocht as *Jack le Maire Mhac an tSaoi*.

Strapaire fionn sé troithe ar airde,
Mac feirmeora ó iarthar tíre,
Ná cuimhneoidh feasta go rabhas-sa oíche,
Ar urlár soimint aige ag rince.

- Cuireadh ceol thíos le líne thosaigh an véarsa.
- Cuir ceol le focail eile an véarsa chun séis 16 bharr a dhéanamh. (Tá sé ceadaithe go mbeadh níos mó ná an oiread seo barraí sa tséis, agus bíodh modhnú san áireamh, más mian leat.)
- Cuir treoracha ceolchasaídh cuí (míriú agus dinimic) leis an tséis.

Andante

Stra - pai - re ___ fionn ___ sé troi - the ar air - de, ___

C.3 AG CUMADH DO RITHIM NÓ DO MHEADARACHT NÓ D'FHOIRM DHAMHSA A THUGTAR

Tugtar mír oscailte gigue thíos.

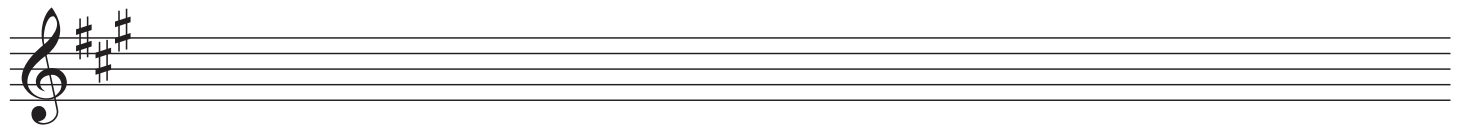
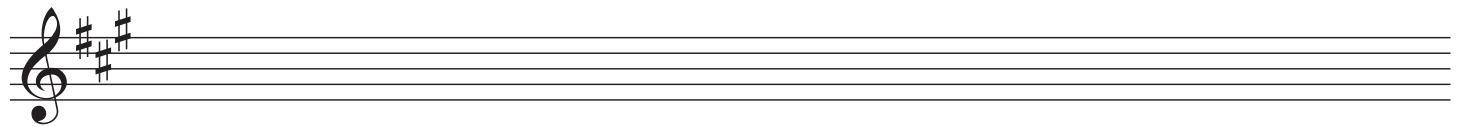
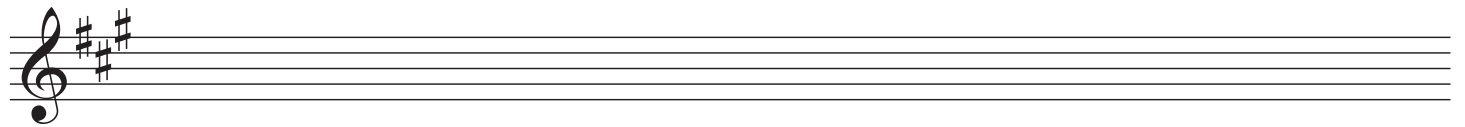
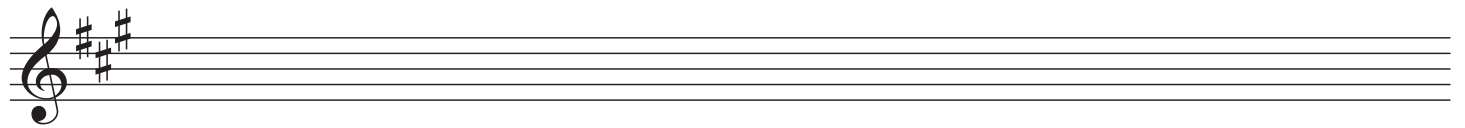
- Lean ar aghaidh leis an oscailt a thugtar chun séis 16 bharra a dhéanamh.
- Bain leas as an bhfoirm AA¹BB¹.
- Bíodh modhnú go dtí an ceannasach san áireamh ag pointe oiriúnach.
- Cuir treoracha ceolchasaídh cuí (míriú agus dinimic) leis an tséis.
- Roghnaigh uirlis oiriúnach le haghaidh do shéise as an liosta seo a leanas:

veidhlín

fliúit Shasanach tribile

fliúit

trumpa



ROINN B – ARMÓIN (60 marc)

GAN ACH CEIST AMHÁIN a fhreagairt sa roinn seo: C4 nó C5 nó C6

C.4 AG CUMADH NÓTAÍ SÉISE AGUS DOIRD Ó SHRAITH CORDAÍ

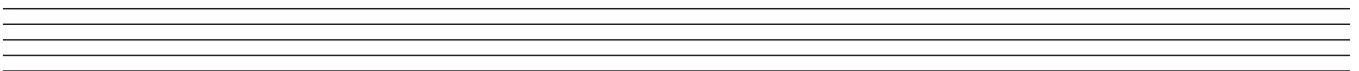
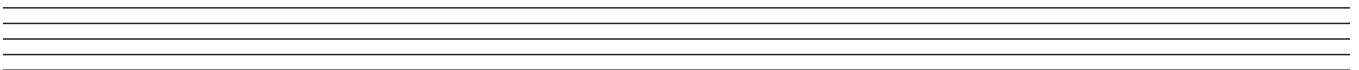
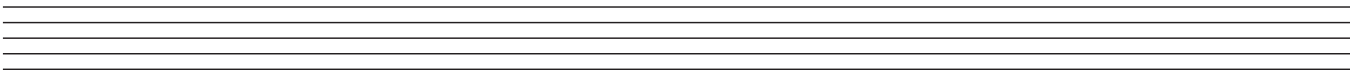
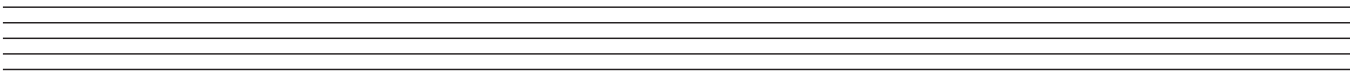
RÉAMHOBAIR

- Rianaigh na cordaí atá ann i mórghléas F i ngréille an chordhainc nó ar an gcliath thíos.

Nótaí an chorda	C		E				B \flat
	A		C				G
	F		A				E
Siombail chorda	F		Am				E \dim
Uimhir Rómhánach	I	ii	iii	IV	V	vi	vii



SRACOB AIR



B	
BQ	
MEL	

• Déan staidéar ar an dréacht ceoil seo a leanas.

• Ag baint leasa as na cordaí a thaispeántar, cum nótaí séise agus doird chun an dréacht a chomhlánú sa stíl a thugtar.

Moderato

F Dm F/A Gm B \flat C F C F/C C

Musical notation for the first system of a piano piece in 4/4 time, featuring a treble and bass clef with a key signature of one flat. The first system contains four measures of music with notes and rests, and a final chord in the bass line.

F Dm B \flat C F/A Gm C7 F

Empty musical staves for the second system of the piano piece.

Dm C B \flat F/A Gm C C7

Empty musical staves for the third system of the piano piece.

F C Dm C B \flat F

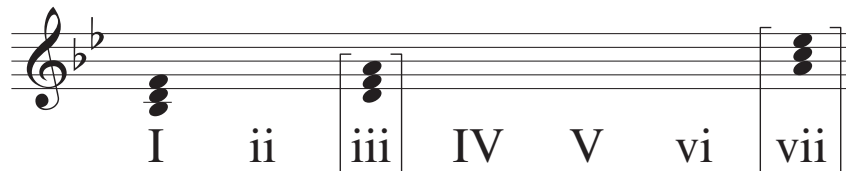
Empty musical staves for the fourth system of the piano piece, ending with a double bar line.

C.5 AG CUMADH DORDNÓTAÍ AGUS SIOMBAILÍ CORDA D'FHONN A THUGTAR

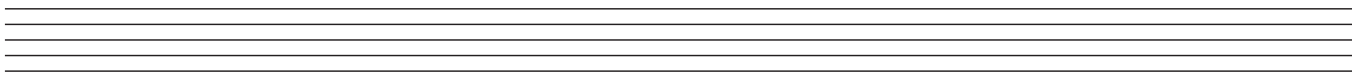
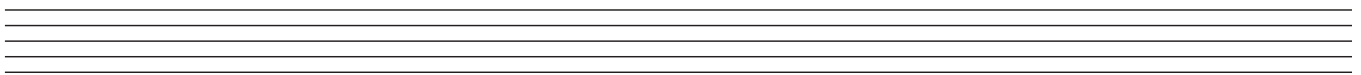
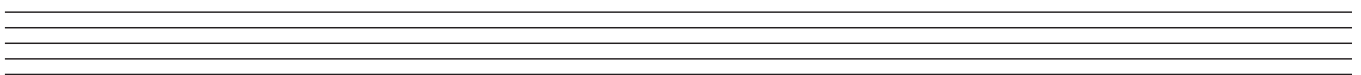
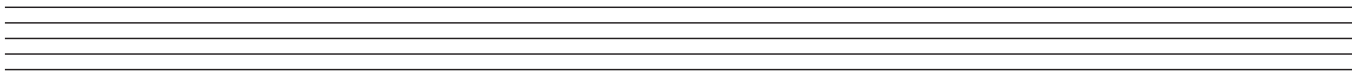
RÉAMHOBAIR

- Rianaigh na cordaí atá ann i mórghléas B \flat i ngréille an chordbhainc nó ar an gliath thíos.

Nótaí an chorda	F		A				E \flat
	D		F				C
	B \flat		D				A
Siombail chorda	B \flat		Dm				A \dim
Uimhir Rómhánach	I	ii	iii	IV	V	vi	vii



SRACOB AIR



C	
CH Q	
B	
BQ	

Déan staidéar ar an dréacht seo a leanas agus cuir isteach dordnótaí agus siombailí corda oiriúnacha i stíl na hoscailte a thugtar.

- *Ná cuir an corda céanna sa suíomh céanna* i mboscaí cóngaracha.
- Tá sé ceadaithe leas a bhaint as siombailí corda nó uimhreacha Rómhánacha, ach gan leas a bhaint astu araon.
- Má roghnaíonn tú uimhreacha Rómhánacha, bain leas as *mionuimhreacha* do *mhionchordaí*.

Moderato

Chord diagrams: V (F), I (B \flat), Ib (B \flat /D), and empty boxes.

C.6 CUNTRASHÉIS NÓ FORSHÉIS AGUS CORDAÍ TACAÍOCHTA A CHUR LE FONN A THUGTAR

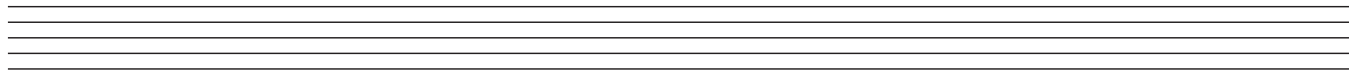
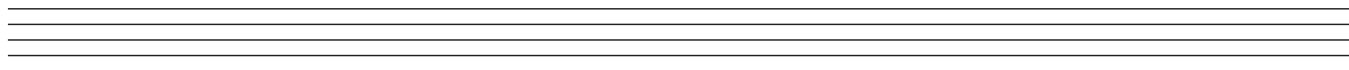
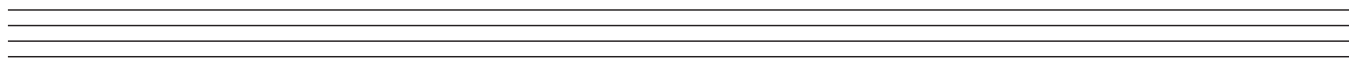
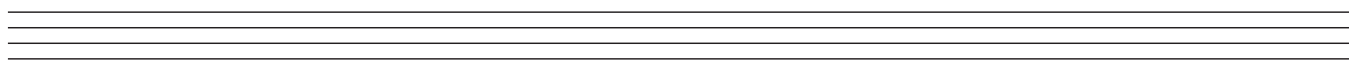
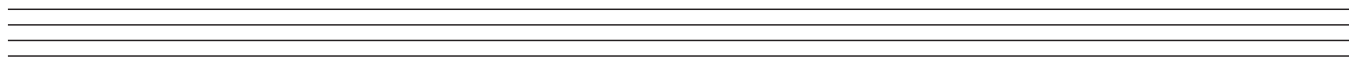
RÉAMHOBAIR

- Rianaigh na cordaí atá ann i mórghléas D i ngreille an chordbhainc nó ar an gcliath thíos.

Nótaí an chorda	A F# D		C# A F#				G E C#
Siombail chorda	D		F#m				C#dim
Uimhir Rómhánach	I	ii	iii	IV	V	vi	vii



SRACOB AIR

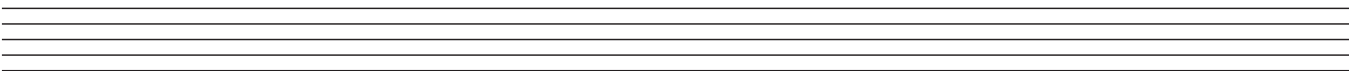
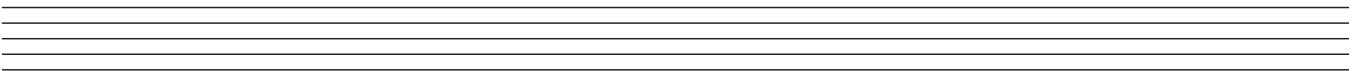
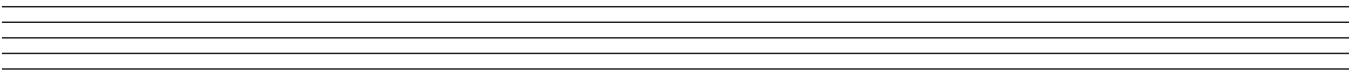
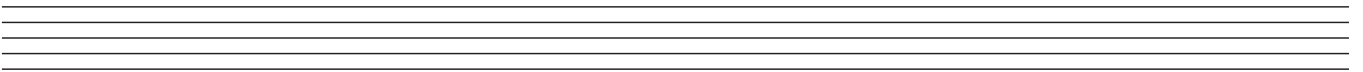
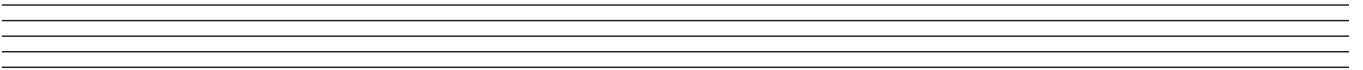
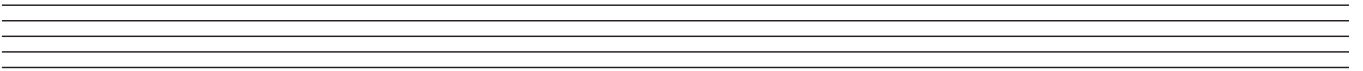
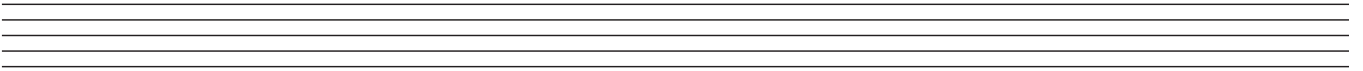
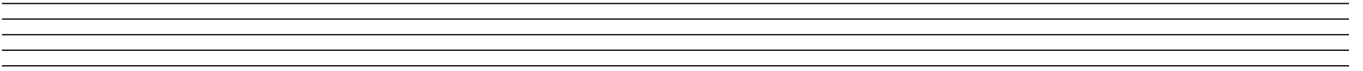
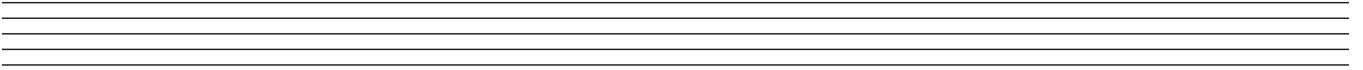
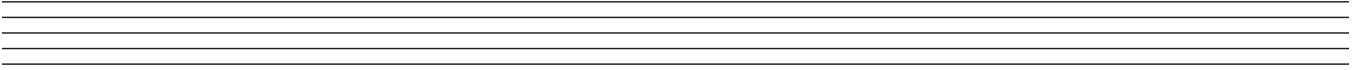
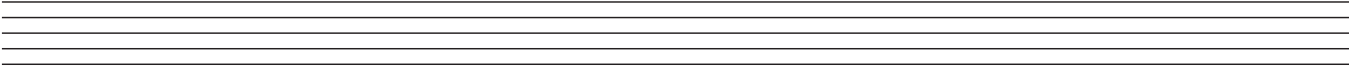


CH	
CAD	
DESC	

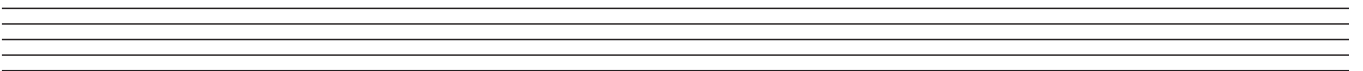
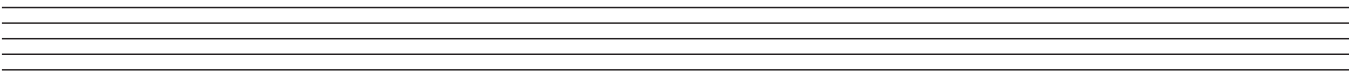
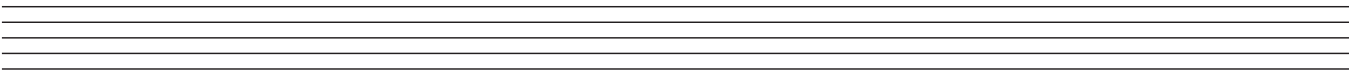
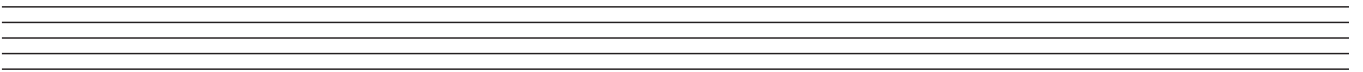
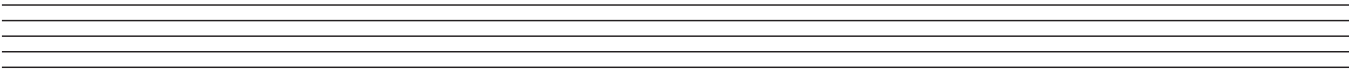
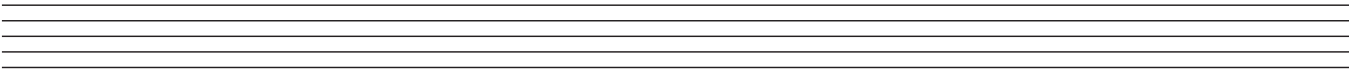
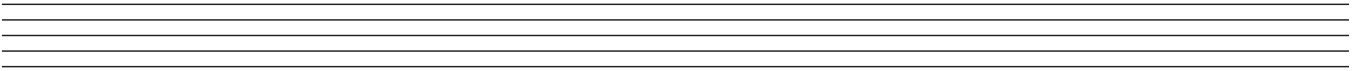
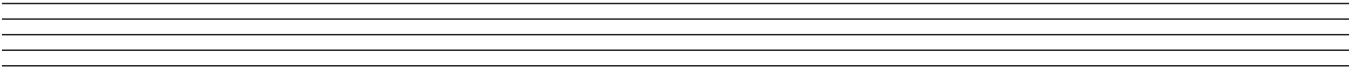
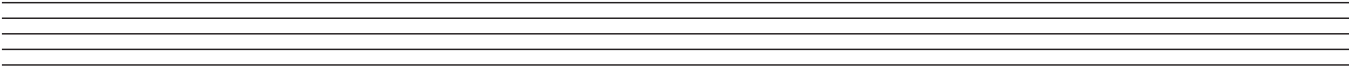
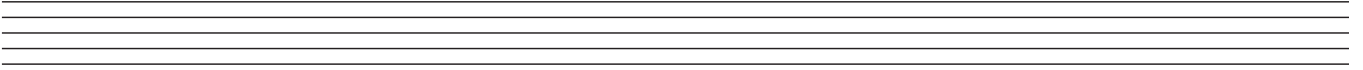
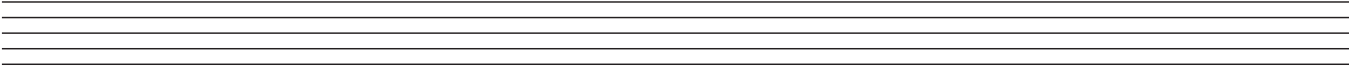
- Déan staidéar ar an dréacht ceoil seo a leanas.
- Cuir isteach siombailí corda oiriúnacha sna boscaí atá ann dóibh agus lean ar aghaidh le páirt na forshéise sa stíl a thugtar chun an dréacht a chomhlánú.
- Tá sé ceadaithe leas a bhaint as siombailí corda nó uimhreacha Rómhánacha, ach gan leas a bhaint astu araon.
- Má roghnaíonn tú uimhreacha Rómhánacha, bain leas as *mionuimhreacha* do *mhionchordaí*.
- Ná cuir an corda céanna isteach *sa suíomh céanna* i mboscaí cóngaracha.

I ii V7 I V
D Em A7 D A

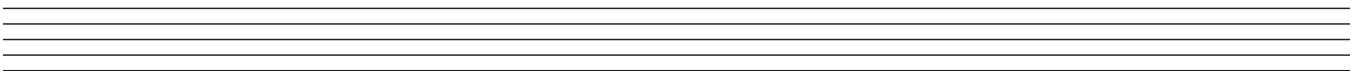
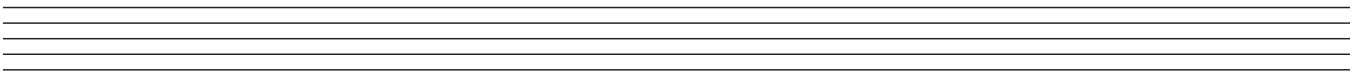
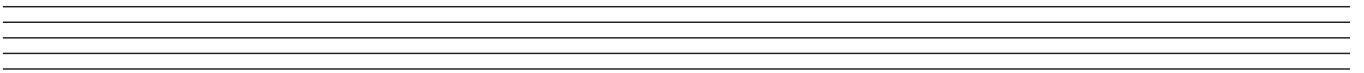
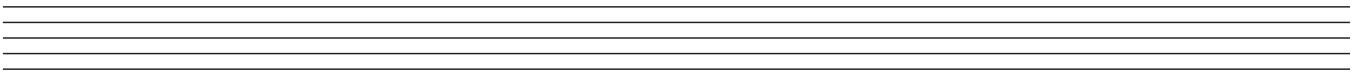
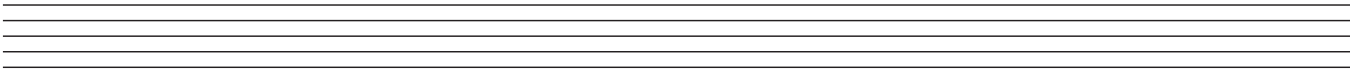
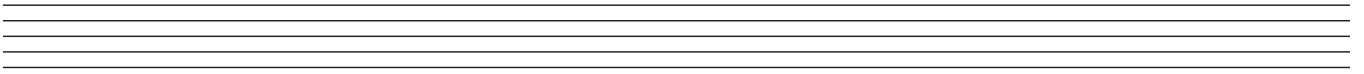
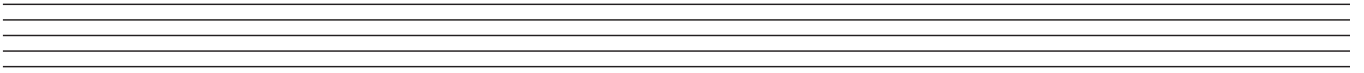
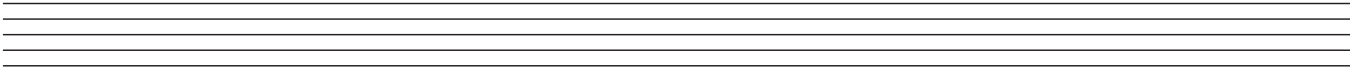
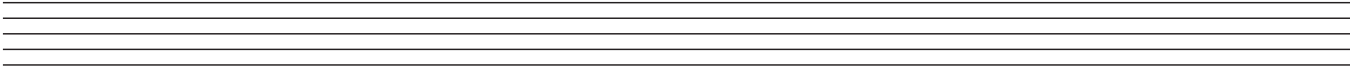
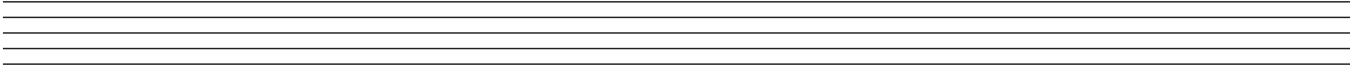
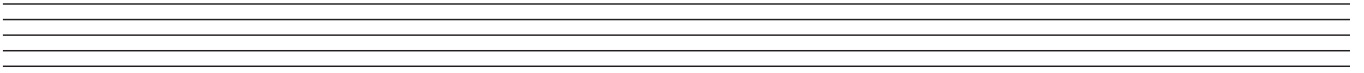
SRACOB AIR



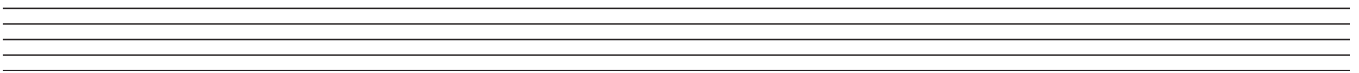
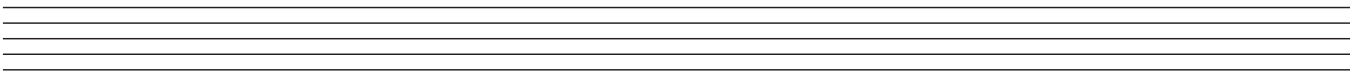
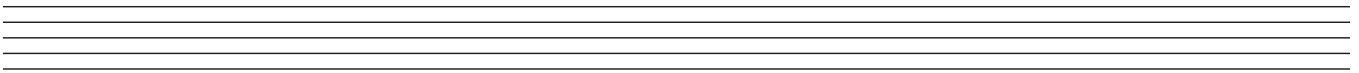
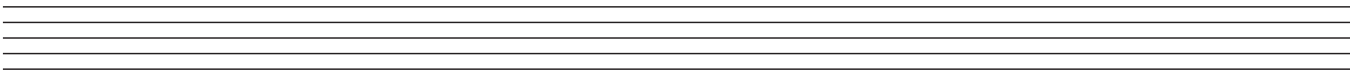
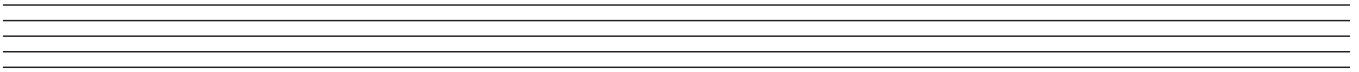
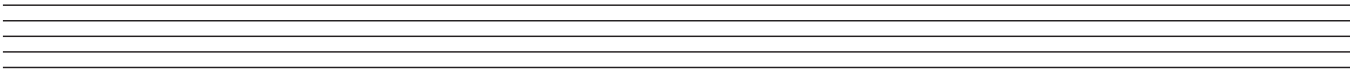
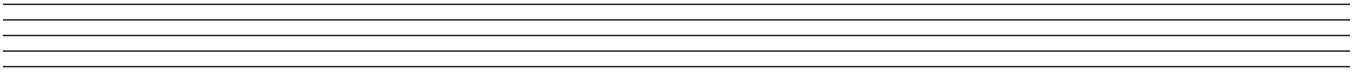
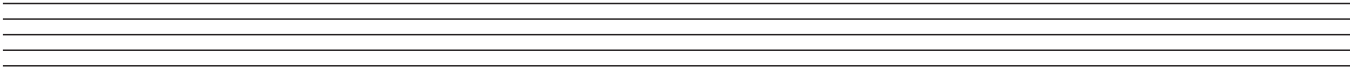
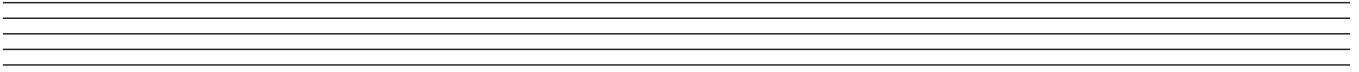
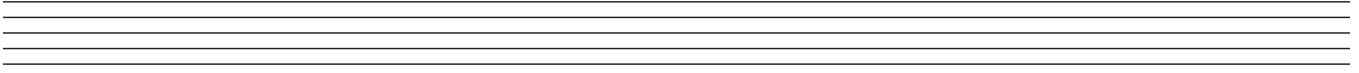
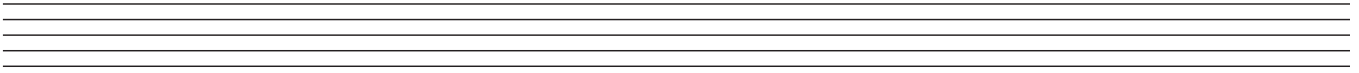
SRACOB AIR



SRACOB AIR



SRACOB AIR



LEATHANACH BÁN