

LEAVING CERTIFICATE EXAMINATIONS, 1997

8511

ART

HISTORY AND APPRECIATION OF ART

Ordinary Level

June 20, MORNING 9.30 - 12.00

150 marks are assigned to this paper

INSTRUCTIONS

- (a) Write as fully as you can on **three** questions. **One** question should be selected from Section I, **one** question from Section II and **one** question from Section III.
- (b) All questions carry equal marks.
- (c) **Sketches and diagrams** must be used where possible to illustrate your points.

SECTION I - ART IN IRELAND

1. The **illustration on the accompanying sheet** shows two metal objects from the Iron Age. The Petric Crown and the Broighter Collar. In your answer describe these items for someone who has never seen them before. Use the following headings as guidelines.
Material, surface decoration, applied ornamentation, function and possible influence.
2. Write a description of the Ardagh Chalice under the following headings.
Design/structure, ornamentation, materials and function.
Let your sketches illustrate these points.
3. Compare the characteristics of the structure, carving and decoration of a Romanesque Church, with a Gothic Church.
4. List three decorative features associated with the architecture of the Georgian period. Explain how they were used and allow your sketches to illustrate your answer.
5. The **illustration on the accompanying sheet** shows paintings by Irish artists
a) Mainie Jellett b) Edward Leech and c) Paul Henry.
Choose one of the paintings. Discuss and describe its qualities referring to subject, composition, treatment of colour and brushwork.

OR

Compare and contrast one with the other, state which one you prefer and list three reasons why it appeals to you.

SECTION II. EUROPEAN ART (1000 AD - Present)

6. In Gothic Churches stained glass and sculpture were used for
- decoration purposes
 - to communicate the Christian Word.
- Discuss these points in relation to one of the following
Notre Dame Cathedral,
Rouen Cathedral or
Chartres Cathedral.
7. Choose your favourite Artist, Sculptor or Architect of the early Renaissance period from either Northern Europe or Italy.
Describe and discuss a painting, piece of sculpture or building attributed to your choice.
8. Leonardo da Vinci's paintings are renowned for their qualities. Name and describe a painting you are familiar with and discuss three qualities you admire about the painting.
9. What are the qualities of Michelangelo's treatment of the human form either in sculpture or painting. Allow the **illustration on the accompanying sheet** to assist you in your answer.

OR

The David
Mary Magdeline
St. George.

Choose one of the above mentioned works by Donatello. Describe and discuss in detail the following qualities of his work

- texture/material
 - expression
 - treatment of the human form.
10. List the qualities of a Baroque painting. Choose an Artist of this period, and select a piece of work which illustrates this style of painting. Allow your sketches to explain your answer.
11. There are **three illustrations on the accompanying sheet** related to this question. Identify all three artists and the period in art history.
Choose one and discuss under the following headings.
- suitability of subject matter
 - use of paint.
- Discuss one other painting belonging to your chosen artist.
12. Dreams and nightmares are the subject matter of many of Salvador Dali's paintings. Describe and discuss his work in relation to the above statement. Allow your sketch to help explain your answer.

OR

Choose a painting or a sculpture by Picasso. Describe the art work in detail for a friend who is going to visit an exhibition of Picasso's work, so that they can identify it from your description. Give details of the subject matter, composition, medium, along with your sketch.

SECTION III. GENERAL APPRECIATION

- 13.** The Art Examiner is due to visit your school to correct some work. You have been asked to supply this person with information about
- where your school is situated and
 - how to find the Art Room.
- List any relevant information and supply a plan of how to find the Information Office, the Principal's Office, toilets and the Art Room.
- 14.** Your favourite relative abroad wishes to give you a present for your next birthday. Something from the following categories.
Fashion, Jewellery, Music or Furniture for your own room.
Give a detailed description of the item you would like under the following headings.
Design, colour, material etc and state why you like it.
- 15.** In the last couple of weeks you have completed your Craftwork/Design paper. Describe the work you did, the research, planning and completion of the item. Were you satisfied with the outcome?
- 16.** During last year what art work did you carry through from beginning to end that increased your confidence and skill in the area of Art, Craft and Design, and also gave you enjoyment?
- 17.** If you have visited an exhibition or museum recently, or observed some artwork on television, choose one item which appealed to you and state why. Discuss under the following headings.
Subject matter, form, function, shape, line and texture. Allow your sketch to help you in your answer.

OR

If you were asked to choose five Irish made items to represent Ireland at an International Craft Fair, what items would you choose and why?

SECTION I
Art in Ireland

RANNÓG I
Ealaín in Éirinn

Q1

Q1



The Petrie Crown
Coróin Petrie
National Museum of Ireland
Músaem Náisiúnta na hÉireann

2nd century AD, 2ú haois AD



The Brighter Collar
Bóna nó Cóiléir Brú Íochtair
National Museum of Ireland
Músaem Náisiúnta na hÉireann

1st century BC, 1ú haois R.Ch

Q5(c)

Q5(b)



Launching the Currach, National Gallery of Ireland
Ag Chur an Churraigh Chun Farraige, Dánlann Náisiúnta na hÉireann
PAUL HENRY



Au Cinquième: Portrait of the Artists Wife, National Gallery of Ireland
Au Cinquième: Portráid Céile an Pheinteara, Dánlann Náisiúnta na hÉireann
WILLIAM J LEECH

Q5(a)



A Composition-Sea Rhythm, National Gallery of Ireland
Ceapadoireacht-Rithim na Farraige, Dánlann Náisiúnta na hÉireann

MAINIE JELLETT

Q9

Q9

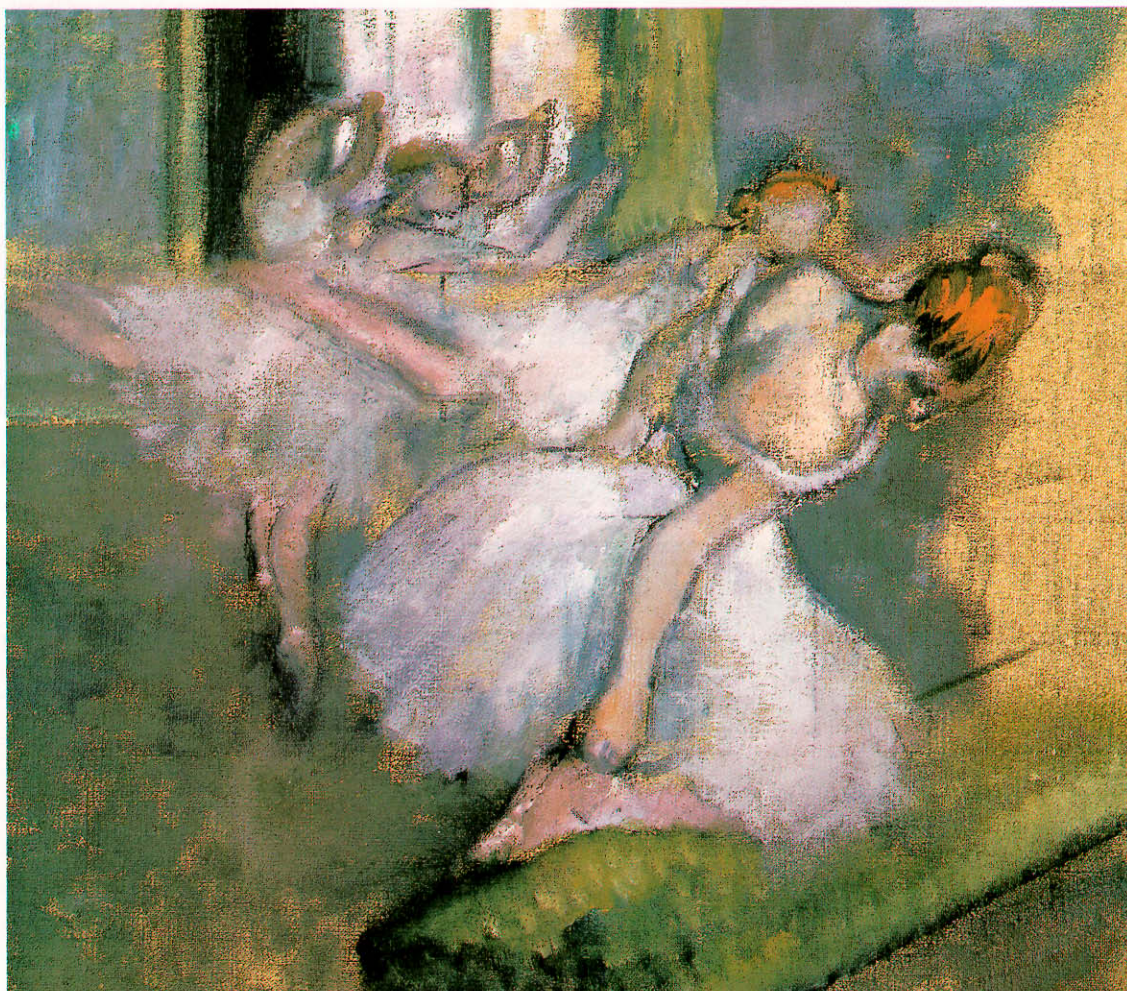


The Chair of the Prophet Isaiah *Cathaoir Isiah Faidh*
MICHELANGELO



The Statue of Moses *Dealbh Maoise*
MICHELANGELO

Q11(a)



The National Gallery, London
Gailirí Náisiúnta, Londain

Q11(b)



The National Gallery, London *Gaileri Náisiúnta, Londain*

Q11(c)



The National Gallery, London *Gaileri Náisiúnta, Londain*



Ceramics *Criadóireacht* MICHEAL KENNEDY