



**Coimisiún na Scrúduithe Stáit**  
*State Examinations Commission*

# **JUNIOR CERTIFICATE 2010**

## **MARKING SCHEME**

### **TECHNICAL GRAPHICS**

#### **ORDINARY LEVEL**

*Sections A and B*



**Coimisiún na Scrúduithe Stáit**  
**State Examinations Commission**

*Junior Certificate Examination 2010*

***Grafaic Theicniúil***  
***Technical Graphics – Ordinary Level***



***Gnáthleibhéal***  
***Scéim Mharcála***

***Roinn A agus B***

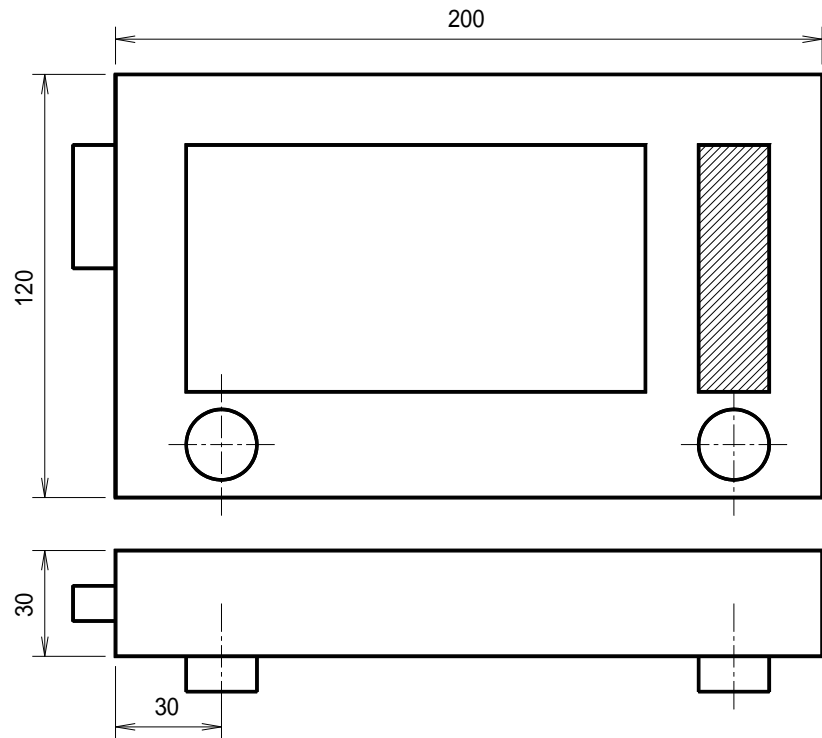


## Section A - Any ten questions from this section

<b>Q1</b>	3 9	Projection line from End Elevation ( <b>3 marks</b> ) Elevation– 3 lines – 3 marks per line ( <b>3x3 marks</b> )
<b>Q2</b>	8 4	For a good quality, well proportioned freehand pictorial sketch ( <b>5 average quality or rule used</b> ) For colour or shading
<b>Q3</b>	6 6	Correct Name 1 Use
<b>Q4</b>	6 6	Bisection of line AB ( <b>6 marks</b> ) Drawing line from C ( <b>6 marks</b> )
<b>Q5</b>	3 5 4	Location of Point N ( <b>3 marks</b> ) Correct construction for tangent ( <b>5 marks</b> ) Drawing tangent lines LM and LN ( <b>2+2 marks</b> )
<b>Q6</b>	12	36-38 sq. metres = 12 marks ( <b>35 or 39 = 8 marks</b> )
<b>Q7</b>	8 4	Elevation of blocks – 4 rows 2 marks for each row correct ( <b>-1 mark each row incorrect</b> ) Good proportion
<b>Q8</b>	6 6	A = 700mm ( <b>reversed and correct 3 marks each</b> ) B = 500mm
<b>Q9</b>	7 5	7 Lines ( <b>7x1 mark</b> ) For colour or shading
<b>Q10</b>	6 6	Fillet command ( <b>6 marks</b> ) Circle command ( <b>6 marks</b> )
<b>Q11</b>	6 6	Correct location of 2 corners ( <b>2x3 marks</b> ) Drawing 3 lines to complete Hexagon ( <b>3x2 marks</b> )
<b>Q12</b>	6 6	1 mark for each projection line of letter H to vertical plane 6 marks for correct outline ( <b>4 marks for incomplete outline</b> )
<b>Q13</b>	6 6	Drawing 2 Diagonal lines ( <b>2x3 marks</b> ) Outline 2 lines to centre ( <b>2x3 marks</b> )
<b>Q14</b>	12	6 lines – 2 marks per line in perspective view ( <b>6x2 marks</b> )
<b>Q15</b>	8 4	Correct angle of rotation of needle Complete needle ( <b>2 marks per line</b> )
<b>Total 120</b>		

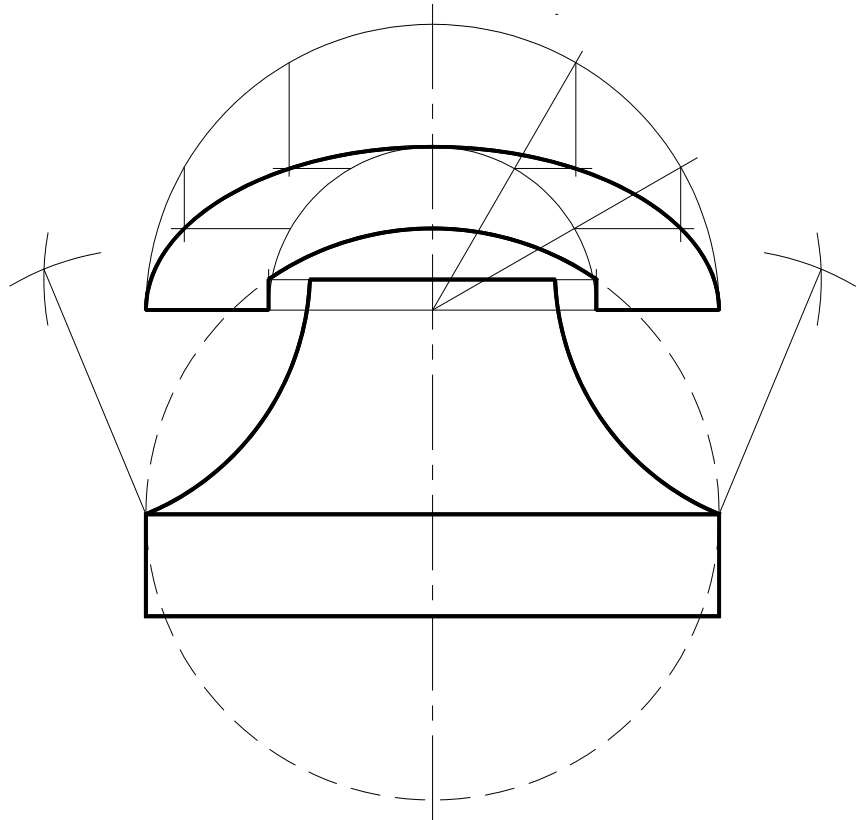
# Section B

## Ceist 1: Orthographic Projection



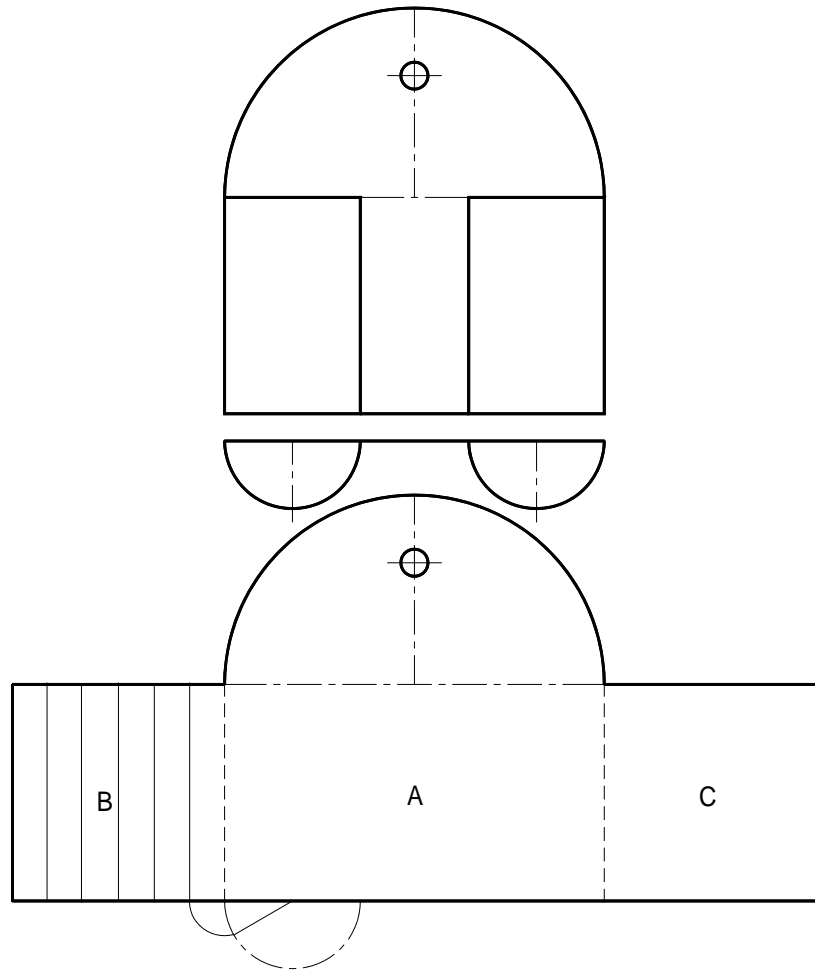
<b>Orthographic Outline (10)</b>	
10	Elevation and Plan positioned correctly <i>(4 marks if incorrect position of plan, 1 view = 3 marks)</i>
<b>Elevation (27)</b>	
8	Player Outline <i>(4×2marks)</i>
8	2 Rectangles on Front <i>(4×1mark +4×1mark)</i>
8	2Circular Buttons <i>(2×4 marks, incorrect position -2 each)</i>
3	Button on side <i>(3×1mark)</i>
<b>Plan (17)</b>	
8	Player Outline <i>(4×2 marks)</i>
9	3 Buttons <i>(3×3 marks)</i>
<b>Dimension lines (4)</b>	
4	1 mark per dimension line <i>(4×1 mark)</i>
(12)	<b>Drafting, accuracy and presentation</b>
<b>Total 70</b>	

## Ceist 2: Ellipse



<b>Base (25)</b>	
3	R 70 Circle
8	Base Rectangle ( <i>4x2 marks</i> )
2	Offset 50
4	Top Line ( <i>position 2 marks + 2 marks for line</i> )
4	R 65 Arc ( <i>location of centre 2 marks + 2 marks for arc</i> )
4	R 65 Arc ( <i>location of centre 2 marks + 2 marks for arc</i> )
<b>Hand piece (33)</b>	
6	<b>Semi-Ellipse; Major LM; Semi- minor OM – (2x3 marks)</b>
10	Construction for semi-ellipse ( <i>incorrect application = 4 marks</i> )
8	Drawing curve of ellipse ( <i>8,6,4, depending on quality</i> )
9	4 Lines and Arc ( <i>4x2 marks + arc 1 mark</i> )
<b>(12)</b>	<b>Drafting, accuracy and presentation</b>
<b>Total 70</b>	

### Ceist 3: Surface Development



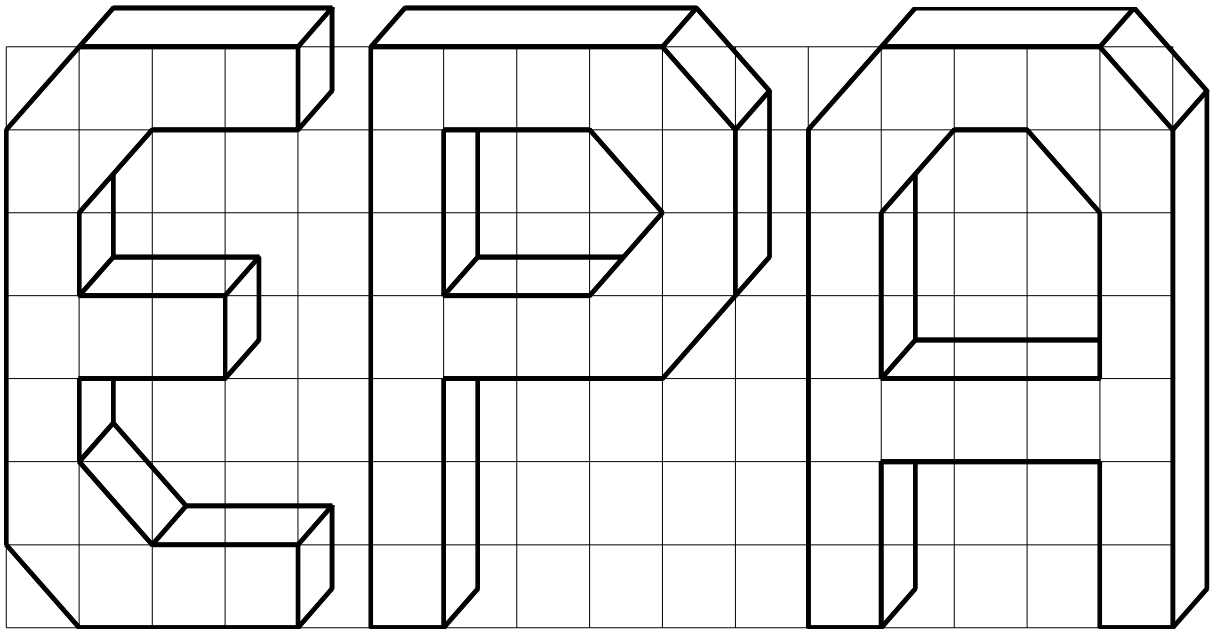
<b>Orthographic (21)</b>	
4	Elevation and Plan in correct position <i>(Plan in wrong location 2 marks)</i>
11	Elevation - 7 lines (7×1 mark) Semi-circle (2marks) Small circle (2marks)
6	Plan - line and 2 semi-circles (3×2 marks)
<b>Development (37)</b>	
13	Back A - 3 lines (3×3marks) Semi- circle and hole (2marks + 2 marks)
6	Construction for finding correct length of sides B and C
8	Side B - 3 lines (3×2 marks + 2 for correct length)
8	Side C - 3 lines (3×2 marks + 2 for correct length)
2	Broken lines to indicate fold lines (2×1 mark)
(12)	<b>Drafting, accuracy and presentation</b>
<b>Total 70</b>	

### Ceist 4: Isometric Projection



<b>Setting Up (14)</b>	
9	Height, length and width of grid (3×3 marks) ( deduct 2marks each if inaccurate)
5	Isometric outline (deduct 2 + 3 if 30° angles are not used)
<b>Front Face (23)</b>	
8	Letter <b>E</b> – 16 lines (half mark each line)
7	Letter <b>P</b> – 13 lines (half mark each line)
8	Letter <b>A</b> – 16 lines (half mark each line)
<b>Complete width (21)</b>	7 marks per letter (4 marks per letter if all lines are not put in)
(12)	<b>Drafting, accuracy and presentation</b>
<b>Total 70</b>	

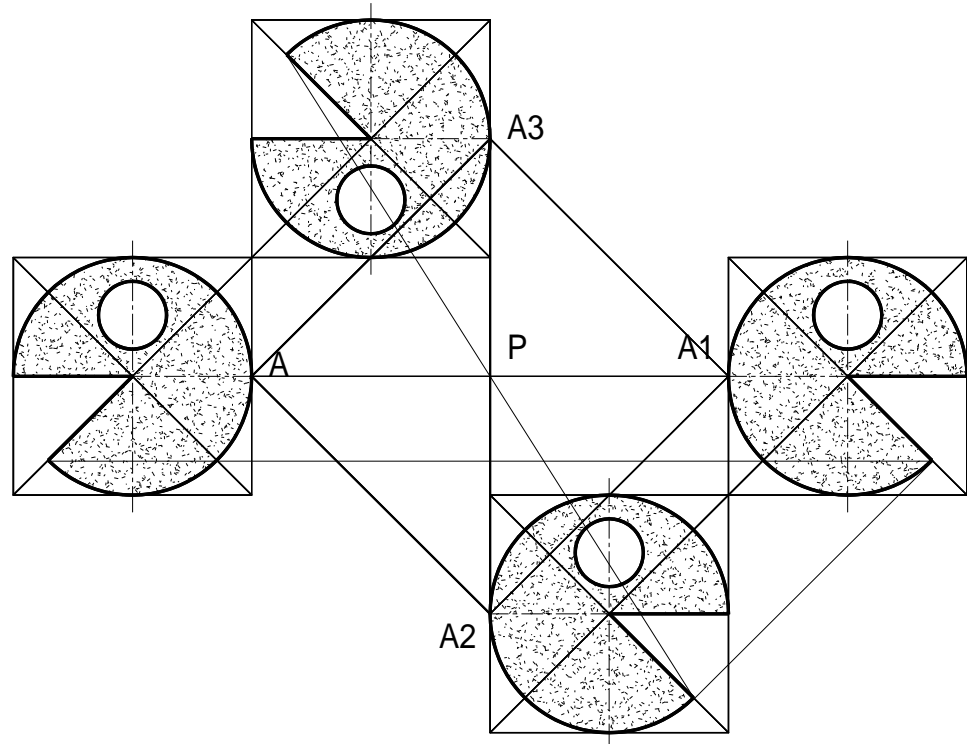
### Ceist 4: Oblique Projection



<b>Setting Up (14)</b>	
9	Height, length and width of grid (3×3 marks) (deduct 2 each if inaccurate)
5	Oblique outline (deduct 5 marks if 45° angle not used)
<b>Front Face (23)</b>	
8	Letter <b>E</b> – 16 lines (half mark each line)
7	Letter <b>P</b> – 13 lines (half mark each line)
8	Letter <b>A</b> – 16 lines (half mark each line)
<b>Complete width (21)</b>	7 marks per letter (4 marks per letter if all lines are not put in)
(12)	<b>Drafting, accuracy and presentation</b>
<b>Total 70</b>	

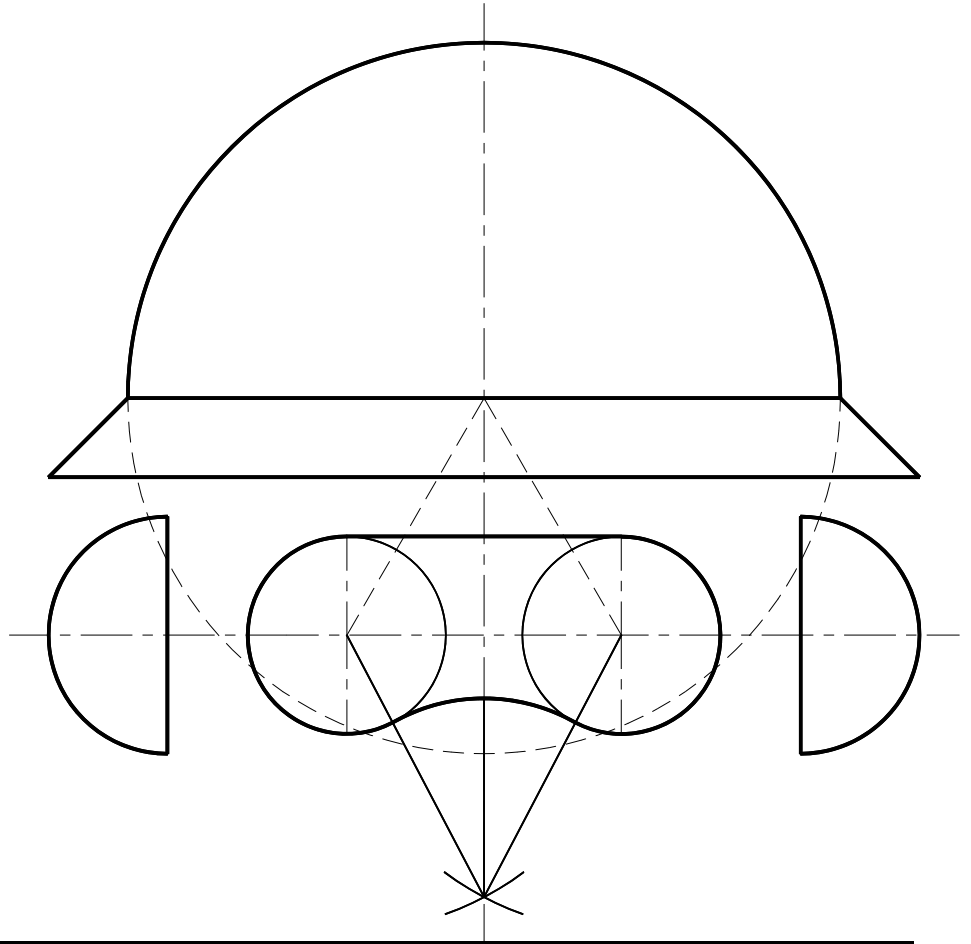


## Ceist 5 Transformation Geometry



<b>Setting up (16)</b>	
10	<b>Draw given fig ; Circle - 4 marks - Cut Out - 2+2 marks</b> Small Circle - 2 marks
4	Locating points A1, A2, A3 and line A2-A3 (4 x1 mark)
2	Locating point P
<b>Axial Symmetry (14)</b>	
4	Projection lines perpendicular to A2-A3 ( <i>correct position and orientation</i> )
10	Drawing fig. as above
<b>Translation (14)</b>	
4	Projection lines parallel to A1-A2
10	Drawing fig. as above
<b>Central Symmetry (14)</b>	
4	Drawing lines through centre point P
10	Drawing Fig. as above
(12)	<b>Drafting, accuracy and presentation</b>
<b>Total 70</b>	

**Ceist 6 – Circles and tangents**



<b>Hat (18)</b>	
6	Semi-circle ( <b>6marks</b> )
12	2 Horizontal Lines( <b>2×2 marks</b> ) 2 Sloping Lines ( <b>2×4 marks</b> )
<b>Goggles (30)</b>	
4	Offset 40mm ( <b>4 marks</b> )
6	Location of circles – angle 60 ( <b>2×3 marks</b> )
9	R25 Circles and line ( <b>2×3 marks + 3marks</b> )
11	R50 Arc - Location Arc ( <b>3 marks</b> ) POCs ( <b>2×2 marks</b> ) Arc( <b>4 marks</b> )
<b>Ear Muffs (10)</b>	
5	L. Side – Semi-circle and line ( <b>4marks +1mark</b> )
5	R. Side – Semi-circle and line ( <b>4marks +1mark</b> )
(12)	<b>Drafting, accuracy and presentation</b>
<b>Total 70</b>	