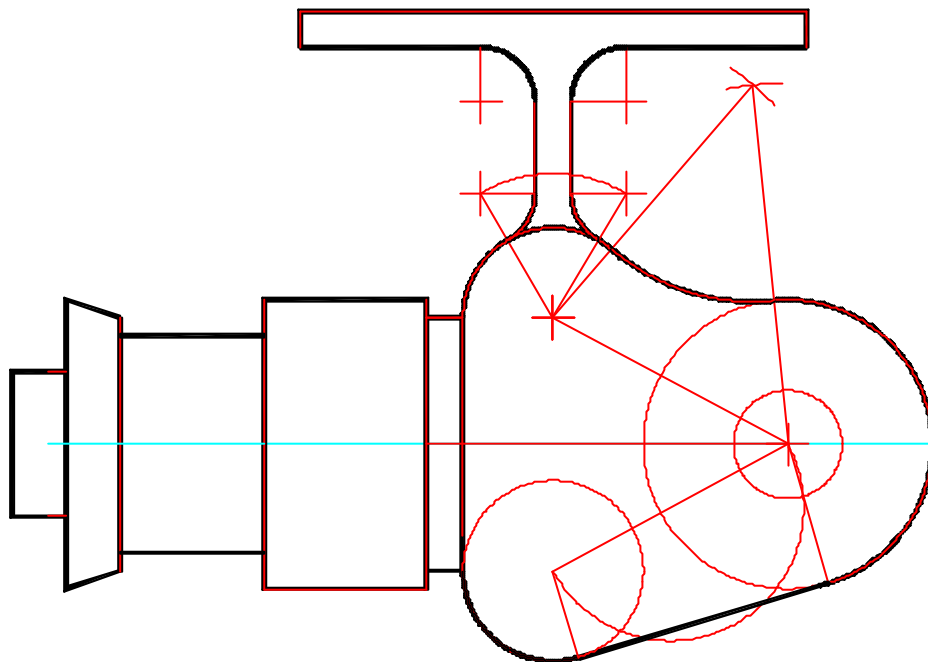


# TECHNICAL GRAPHICS — ORDINARY LEVEL

## MARKING CONFERENCE 2003

TUESDAY July 1<sup>st</sup> 10:30am

Venue: Institute of Technology, Athlone



CONFIDENTIAL

To be returned once the marking is complete

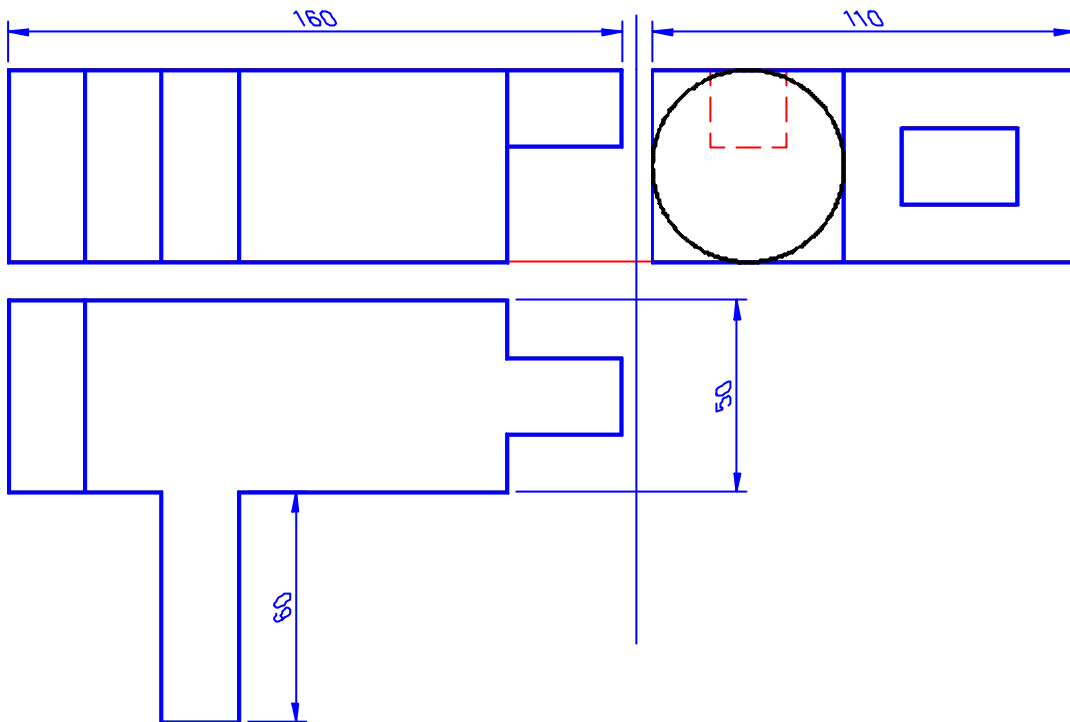
(Section XVII - Paragraph 5.1 of Booklet S.63 — Instructions to Assistant Examiners 2002)

## Section A

<b>Q1.</b>	12	2 marks for each correct line in elevation and plan
<b>Q2.</b>	12	Model correctly depicted in a <u>good quality</u> freehand pictorial sketch
<b>Q3.</b>	6	Printer
	6	CD/CD drive
<b>Q4.</b>	12	Correct Triangle.
<b>Q5.</b>	12	Correct construction
<b>Q6.</b>	4	Offset 10 mm vertically
	4	Offset 10 mm horizontally
	4	10 mm arc
<b>Q7.</b>	12	2 marks for each line.
<b>Q8.</b>	12	A = 6.0 mm B = 3.5 mm 6 marks each
<b>Q9.</b>	12	90 square units.
<b>Q10.</b>	3	Projections to the auxiliary plane, 1 mark each line.
	3	Correct height.
	6	Completing the aux. Figure, 2 marks each line.
<b>Q11.</b>	12	6 marks each.
<b>Q12.</b>	4	Projections to the vertical plane.
	4	Outline figure.
	4	Shading.
<b>Q13.</b>	12	Recognised construction to determine points of contact.
<b>Q14.</b>	10	Projections to the V.P's, 2 marks each.
	2	Completing the figure.
<b>Q15.</b>	12	90°
	10	270°

## Section B

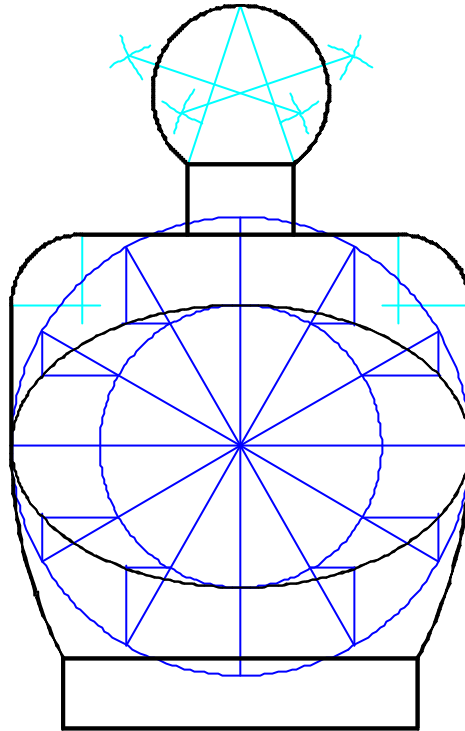
### Q.1 Section B — Camcorder (Orthographic Projection)



<b>10</b>	<b>Orthographic outline (10)</b> Correct orientation of elevation, plan and end elevation.
<b>Elevation (9)</b>	
<b>9</b>	1 mark for each line.
<b>Plan (13)</b>	
<b>13</b>	1 mark for each line.
<b>End elevation (22)</b>	
<b>15</b>	1 mark for each line, + 1 each for hidden detail lines..
<b>3</b>	R25 circle.
<b>4</b>	Correct position of screen and view finder.
<b>12</b>	<b>Draughtsmanship</b>

**Total marks = 70**

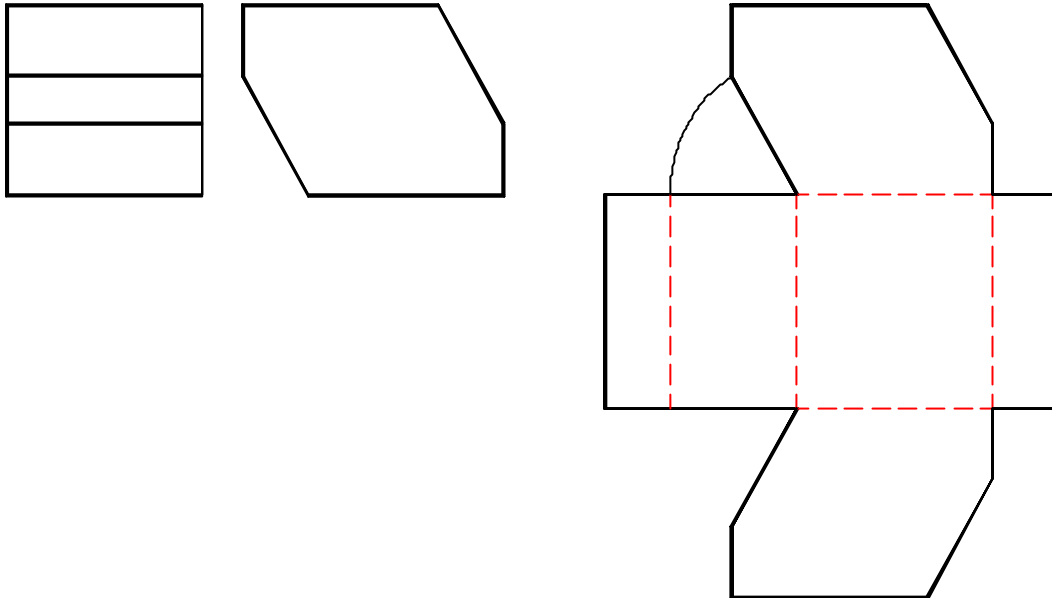
**Q.2 Section B — Perfume Bottle (ellipse)**



<b>Orthographic Outline (10)</b>	
<b>10</b>	Elevation, plan and end elevation, correctly arranged.
<b>Elevation (9)</b>	
<b>9</b>	1 mark for each correct line in the elevation.
<b>Plan (13)</b>	
<b>13</b>	1 mark for each correct line in the plan.
<b>End Elevation (22)</b>	
<b>15</b>	1 mark for each correct line in the end elevation, plus 1 each for hidden detail.
<b>3</b>	R 25 circle
<b>4</b>	Correct position of the view finder.
<b>Dimensioning (4)</b>	
<b>4</b>	1 mark for each.
<b>12</b>	<b>Draughtsmanship</b>

**Total marks = 70**

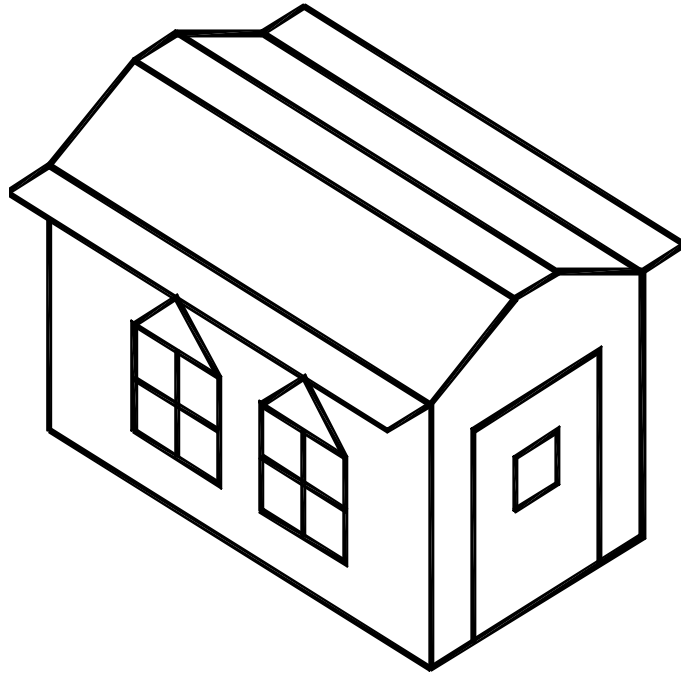
### Q.3 Section B — Storage Box (Development)



<b>Orthographic outline (18)</b>	
<b>6</b>	Correct orientation of the end elevation.
<b>6</b>	Elevation, 1 mark for each line.
<b>6</b>	End elevation, 1 mark for each line.
<b>Development (40)</b>	
<b>13</b>	Sides <b>A,B,C, and D</b> . 1 mark each line.
<b>10</b>	Sides <b>E and F</b> , 1 mark each line.
<b>6</b>	True length of side X.
<b>5</b>	Fold lines hatched.
<b>6</b>	Economy of folds, (one piece development)
<b>12</b>	<b>Draughtsmanship</b>

**Total marks = 70**

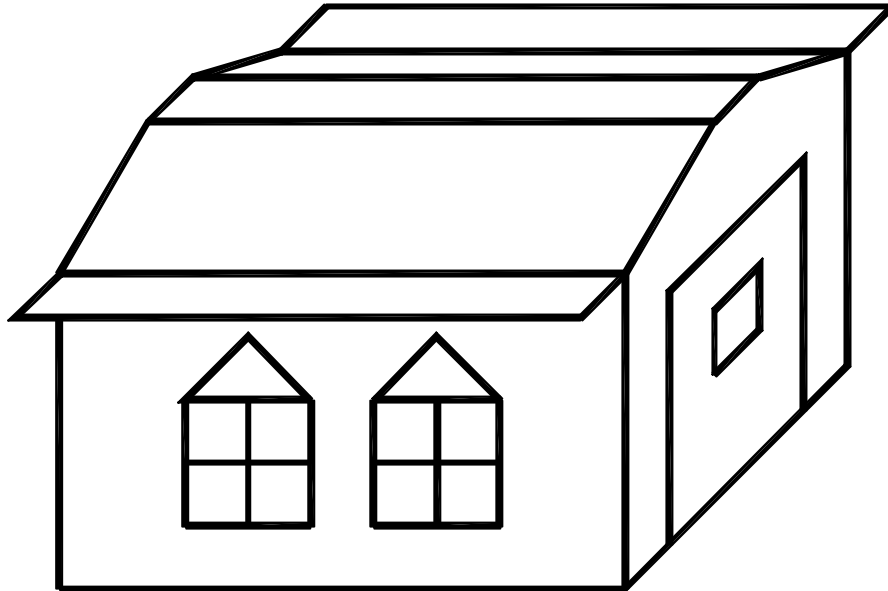
**Q. 4. Section B — Pictorial (Isometric)**



<b>Outline in Isometric (14)</b>	
<b>9</b>	Outline height, length and depth, 3 marks each.
<b>5</b>	30° angle, correctly applied.
<b>Completion of Garden Shed (44)</b>	
<b>28</b>	Walls, windows and door, 1 mark for each line.
<b>16</b>	Roof, 1 mark for each line.
<b>12</b>	<b>Draughtsmanship</b>

**Total marks = 70**

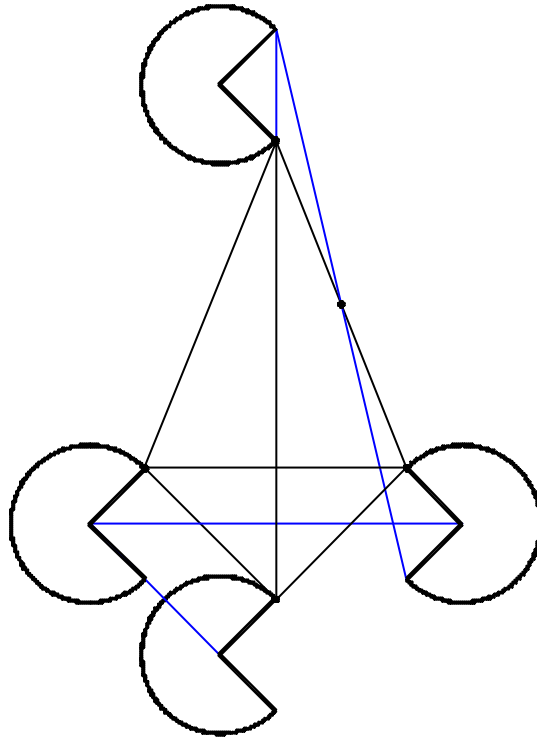
**Q.4. Section B — Pictorial (Oblique)**



	<b>Outline in Isometric (14)</b>
<b>9</b>	Outline height, length and depth, 3 marks each.
<b>5</b>	30° angle, correctly applied.
	<b>Completion of Garden Shed (44)</b>
<b>28</b>	Walls, windows and door, 1 mark for each line.
<b>16</b>	Roof, 1 mark for each line.
<b>12</b>	<b>Draughtsmanship</b>

**Total marks = 70**

## Q.5 Section B — Transformation Geometry

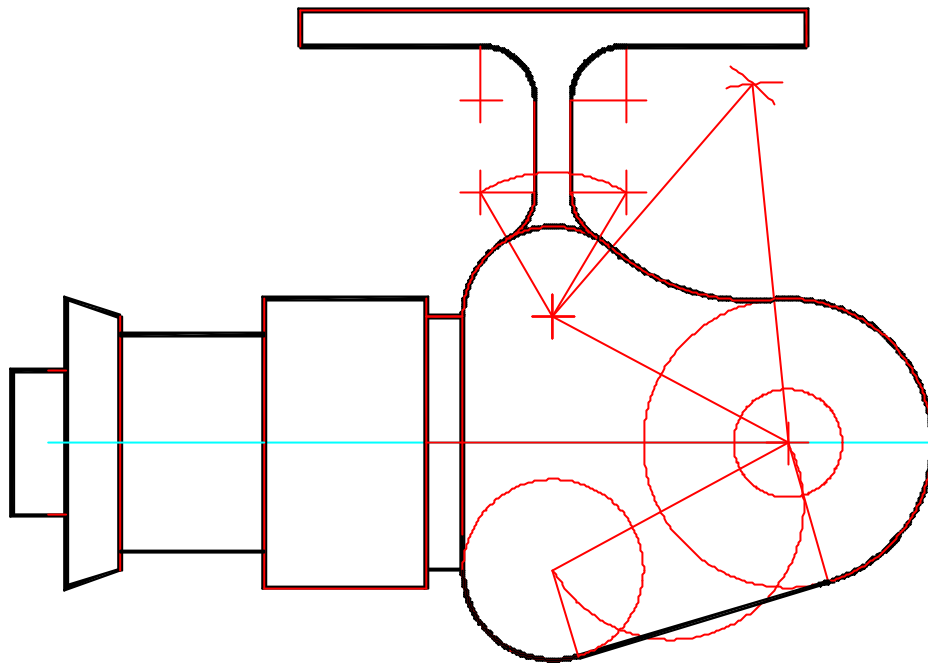


<b>Setting up (18)</b>	
<b>10</b>	8 for trapezoid, 2 marks each line + 1 mark each 100mm&175mm lengths.
<b>8</b>	Fig. F, 4 marks circle, 2 marks each line.
<b>Translation (12)</b>	
<b>4</b>	Line projected parallel to AA1.
<b>8</b>	Fig. F, 4 marks circle, 2 marks each line.
<b>Axial Symmetry (12)</b>	
<b>4</b>	Line A1A2 to fix position.
<b>8</b>	Fig. F, 4 marks circle, 2 marks each line.
<b>Central Symmetry (16)</b>	
<b>4</b>	Bisecting A2A3 to locate point Z.
<b>4</b>	Line to locate orientation.
<b>8</b>	Fig. F, 4 marks circle, 2 marks each line.
<b>12</b>	<b>Draughtsmanship</b>

**Total marks = 70**



**Q.6 Section B — Fishing Reel (Plane Figure)**



<b>Setting-up (35)</b>	
<b>16</b>	Spool, 1 mark for each line.
<b>7</b>	Handle, 1 mark for each line.
<b>12</b>	R40 and R25 circles, 4 marks each circle.
<b>Completion (23)</b>	
<b>Handle (12)</b>	
<b>12</b>	R15 arcs, 3 marks each, (1 horz. Line, 1 vert. Line, 1 arc)
<b>Reel(11)</b>	
<b>6</b>	Locating centre for R60 arc.
<b>5</b>	Construction for tangent
<b>8</b>	<b>Draughtsmanship</b>

**Total marks = 70**



