



Coimisiún na Scrúduithe Stáit **State Examinations Commission**

Scrúdú an Teastais Shóisearaigh, 2012
Junior Certificate Examination, 2012

CEOL MUSIC

Gnáthleibhéal—Trialacha gan ullmhú

- **Amharcléamh**
- **Cluaschuimhne (séis)**
- **Cluaschuimhne (rithim)**
- **Tobchumadh**

Ordinary level—Unprepared tests

- Sight-reading
- Aural memory (melody)
- Aural memory (rhythm)
- Improvisation

Faoi rún daingean Strictly confidential

Clár Contents

Amharcléamh Sight-reading	3
Fliúit Shasanach forshéise Descant recorder	3
Fliúit Flute	3
Trumpa in B maol Trumpet in B flat	3
Coirnéad in B maol Cornet in B flat	3
Pianó Piano	4
Méarchlár Keyboard	4
Orgán leictreonach Electronic organ	4
Feadóg in D Whistle in D.	5
Fliúit cheolchoirme Concert flute	5
Feadóg in C Whistle in C.	5
Veidhlín Violin	5
Fidil Fiddle	5
Guth ard (tribil) High voice (treble).	6
Guth íseal (tribil) Low voice (treble)	6
Sreangdhruma Snare-drum	6
Giotár Guitar	7
Cluaschuimhne (séis) Aural memory (melody).	8
Cluaschuimhne (rithim) Aural memory (rhythm)	9
Tobchumadh Improvisation	10
Rithimeach Rhythmic	10
Séiseach Melodic	10
Armónach Harmonic	10
Innéacs Index.	11

Fliúit Shasanach forshéise Descant recorder

GL OL

Válsa Waltz

mf

Fliúit Flute

GL OL

Meánach Moderately

f

**Trumpa in B maol Trumpet in B flat
Coirnéad in B maol Cornet in B flat**

GL OL

Meanmach Lively

mf

Airde iarbhír Actual pitch**Meanmach Lively**

mf

GL OL

Pianó Piano

Máirseáil March

Méarchlár Keyboard

Orgán leictreonach Electronic organ

GL OL

Meánach Moderately

Feadóg in D Whistle in D Fliúit cheolchoirme Concert Flute

GL OL

Máirseáil March

Musical notation for Máirseáil March in D major, 4/4 time, for Concert Flute. The piece consists of two staves of music. The first staff begins with a treble clef, a key signature of one sharp (F#), and a 4/4 time signature. The melody is composed of quarter and eighth notes. The second staff continues the melody, ending with a double bar line.

GL OL

Feadóg in C Whistle in C

Máirseáil March

Musical notation for Máirseáil March in C major, 4/4 time, for Whistle. The piece consists of two staves of music. The first staff begins with a treble clef, a key signature of no sharps or flats, and a 4/4 time signature. The melody is composed of quarter and eighth notes. The second staff continues the melody, ending with a double bar line.

Veidhlín Violin Fidil Fiddle

GL OL

Polca Polka

Musical notation for Polca Polka in D major, 2/4 time, for Violin/Fiddle. The piece consists of two staves of music. The first staff begins with a treble clef, a key signature of one sharp (F#), and a 2/4 time signature. The melody is composed of quarter and eighth notes, with some notes beamed together. The dynamic marking *mp* is present. The second staff continues the melody, ending with a double bar line. The dynamic marking *mf* is present at the start, and *p* is present at the end.

Guth ard (tribil) High voice (treble)

GL OL

Mall Slowly

mp

Musical notation for High voice (treble) in 4/4 time, key of B-flat. The piece is marked 'Mall Slowly' and 'mp'. It consists of two staves of music. The first staff begins with a treble clef and a key signature of one flat. The melody is composed of quarter and half notes, ending with a whole note. The second staff continues the melody with quarter and half notes, ending with a whole note.

Guth íseal (tribil) Low voice (treble)

GL OL

Meánach Moderately

f

Musical notation for Low voice (treble) in 3/4 time, key of B-flat. The piece is marked 'Meánach Moderately' and 'f'. It consists of two staves of music. The first staff begins with a treble clef and a key signature of one flat. The melody is composed of quarter and eighth notes, ending with a quarter note. The second staff continues the melody with quarter and eighth notes, ending with a quarter note.

Sreangdhruma Snare-drum

GL OL

Meanmach Lively

f

Musical notation for Snare-drum in 4/4 time, key of B-flat. The piece is marked 'Meanmach Lively' and 'f'. It consists of two staves of music. The first staff begins with a snare drum clef and a key signature of one flat. The rhythm is composed of quarter and eighth notes, ending with a quarter note. The second staff continues the rhythm with quarter and eighth notes, ending with a quarter note.

Giotár Guitar

GL OL

Séimh Gently

Two staves of musical notation in treble clef, key of D major (one sharp), and 3/4 time. The first staff begins with a dynamic marking of *mp*. The melody consists of quarter notes and a final half note.

GL OL

Meánach Moderately

Two staves of musical notation in treble clef, key of D major (one sharp), and 2/4 time. The first staff begins with a dynamic marking of *mf*. The melody features eighth notes and quarter notes.

GL OL

Máirseáil March

Two staves of musical notation in treble clef, key of D major (one sharp), and 4/4 time. The notation consists of rhythmic slashes. Chord symbols are placed above the staves: G, C, G, D on the first staff; G, Am, D, G on the second staff.

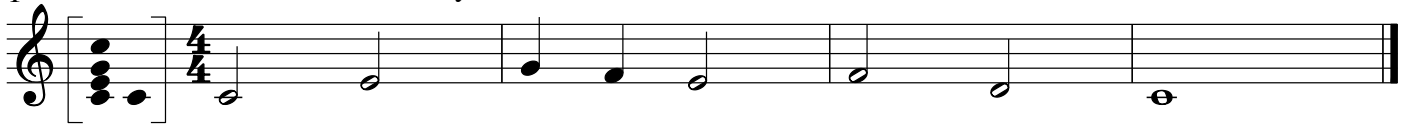
GL OL

Meánach Moderately

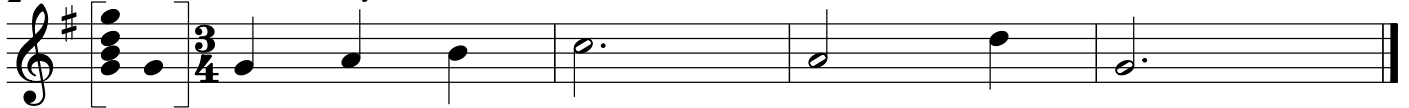
Two staves of musical notation in treble clef, key of D major (one sharp), and 4/4 time. The notation consists of rhythmic slashes. Chord symbols are placed above the staves: D, A, D, G on the first staff; D, Em, A, D on the second staff.

GL OL

1 Meánach Moderately



2 Séimh Gently



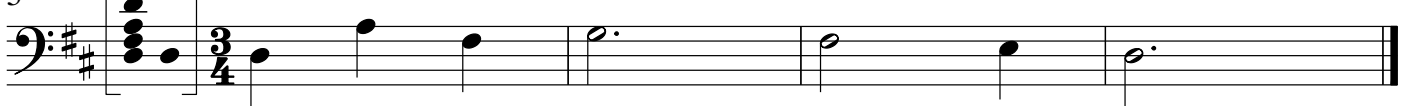
3 Meanmach Lively



4 Meánach Moderately



5 Válsa Waltz



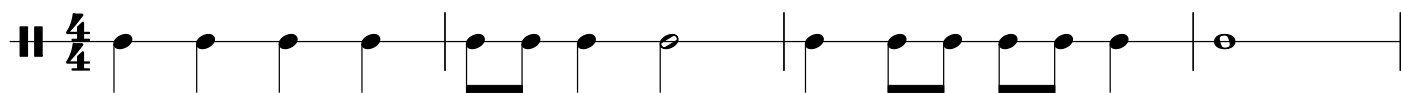
6 Ar luas siúil At a walking pace



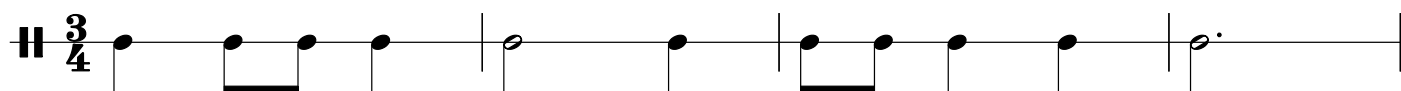
Rithimeach Rhythmic

GL OL

1 **Meánach** Moderately



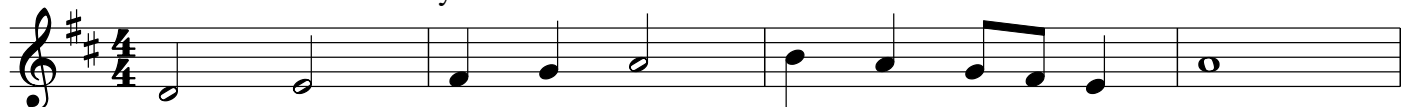
2 **Válsa** Waltz



Séiseach Melodic

GL OL

Cuibheasach mear Fairly fast



Armónach Harmonic

GL OL

Meánach Moderately



Innéacs Index

Coirnéad in B maol Cornet in B flat	3
Feadóg in C Whistle in C	5
Feadóg in D Whistle in D	5
Fidil Fiddle	5
Fliúit Flute	3
Fliúit cheolchoirme Concert flute	5
Fliúit Shasanach forshéise Descant recorder	3
Giotár Guitar	7
Guth ard (tribil) High voice (treble)	6
Guth íseal (tribil) Low voice (treble)	6
Méarchlár Keyboard	4
Orgán leictreonach Electronic organ	4
Pianó Piano	4
Sreangdhruma Snare-drum	6
Trumpa in B maol Trumpet in B flat	3
Veidhlín Violin	5

