



**Coimisiún na Scrúduithe Stáit  
State Examinations Commission**

**JUNIOR CERTIFICATE EXAMINATION, 2012**

**METALWORK**

**TECHNIQUES AND DESIGN – PRACTICAL EXAMINATION**

**Higher Level – 150 Marks**

**30<sup>th</sup> April - 11<sup>th</sup> May, 9:30 - 12:30 or 2:00 - 5:00**

**PLEASE READ CAREFULLY**

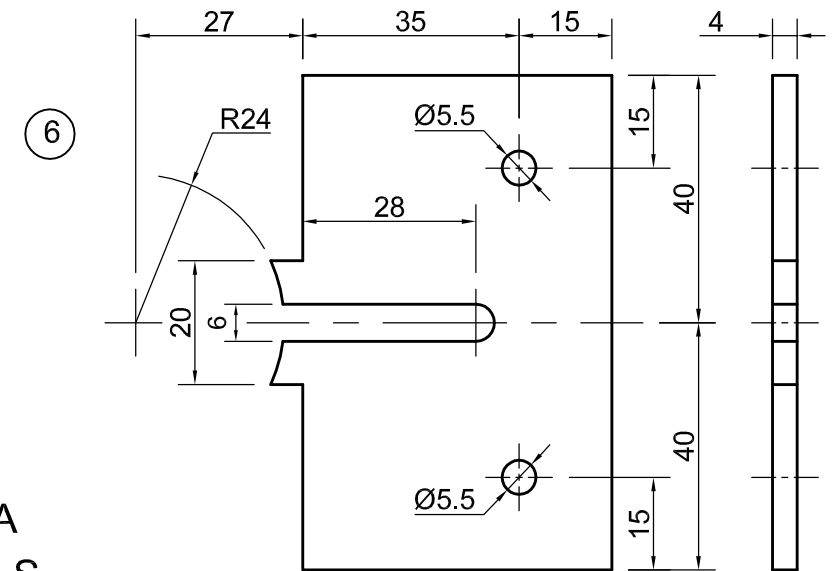
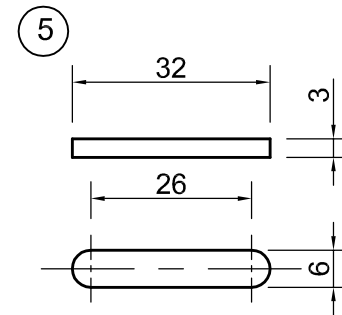
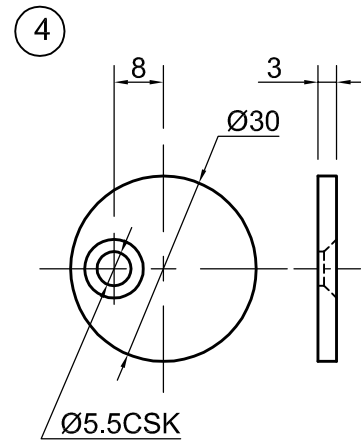
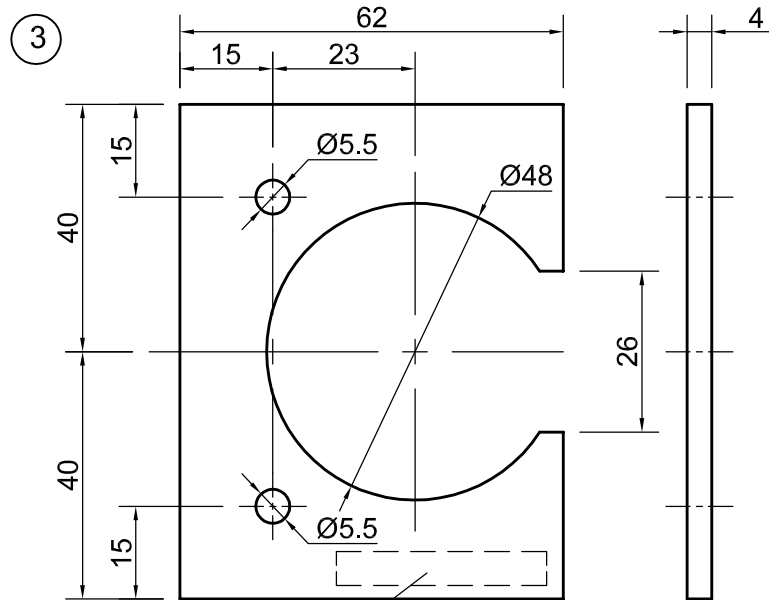
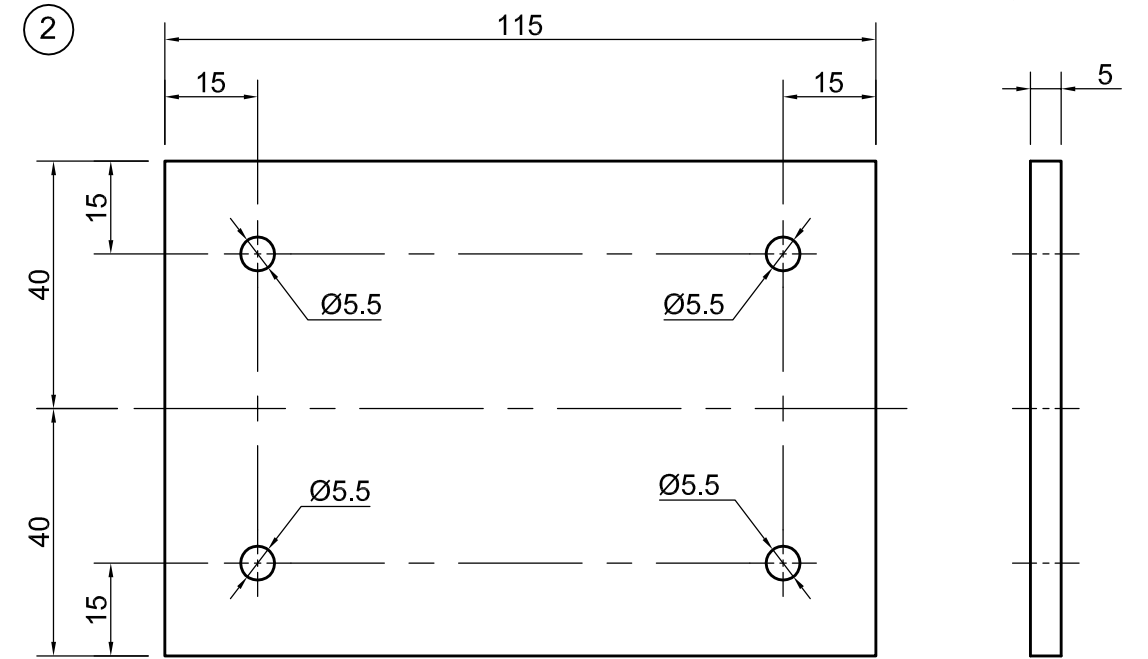
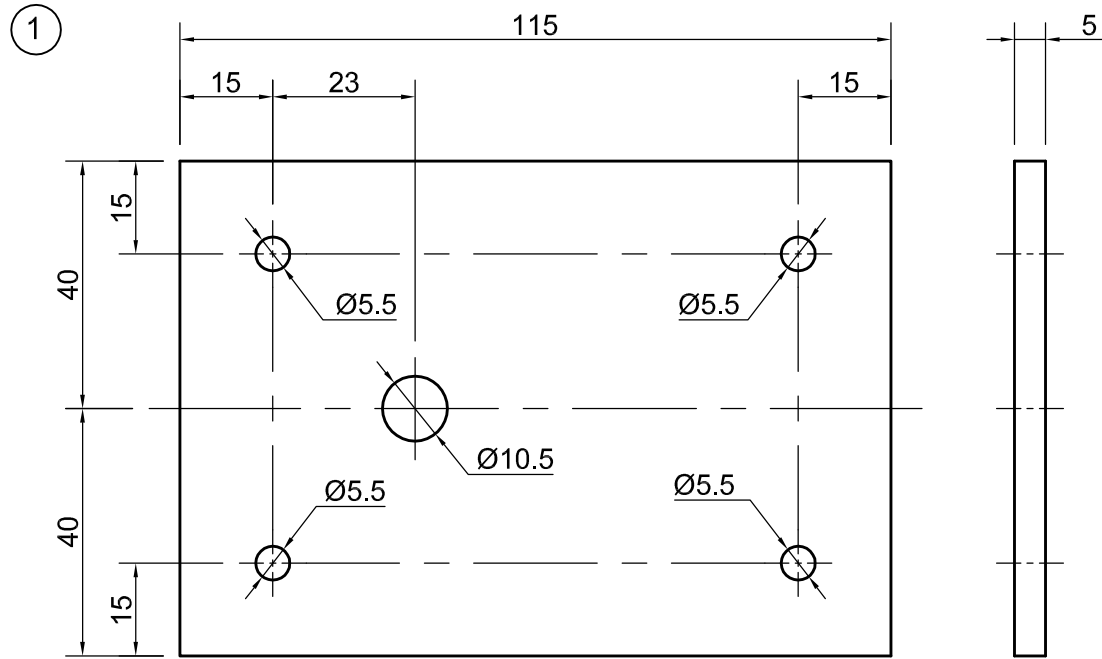
**INSTRUCTIONS**

- (a) The Examination Number must be clearly stamped or engraved by the **teacher** on the test-piece in the position indicated on the drawing. If the test-piece is not assembled, the Examination Number must be indicated on each separate part of the test-piece.
- (b) Candidates are not permitted to communicate with or assist one another.
- (c) Where applicable, completed **mild steel** parts **only** must be lightly sprayed with a clear rust preventive aerosol.

From the materials supplied, make the **Mechanism** shown on the drawings to the shape and dimensions specified.

PART	MATERIAL	PROCESS
1	Clear Acrylic	Mark out and drill.
3	Aluminium	Mark out, drill and shape.
5	Brass	Mark out and shape.
6	Aluminium	Mark out, drill and shape.

**Note:** (i) Part 1 has been part-prepared and Parts 2, 4 and 7 have been prepared prior to examination day. Using the screws and nuts supplied, assemble the Mechanism as detailed on the assembly drawing.  
(ii) **Accuracy, finish and function are important.**

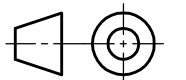
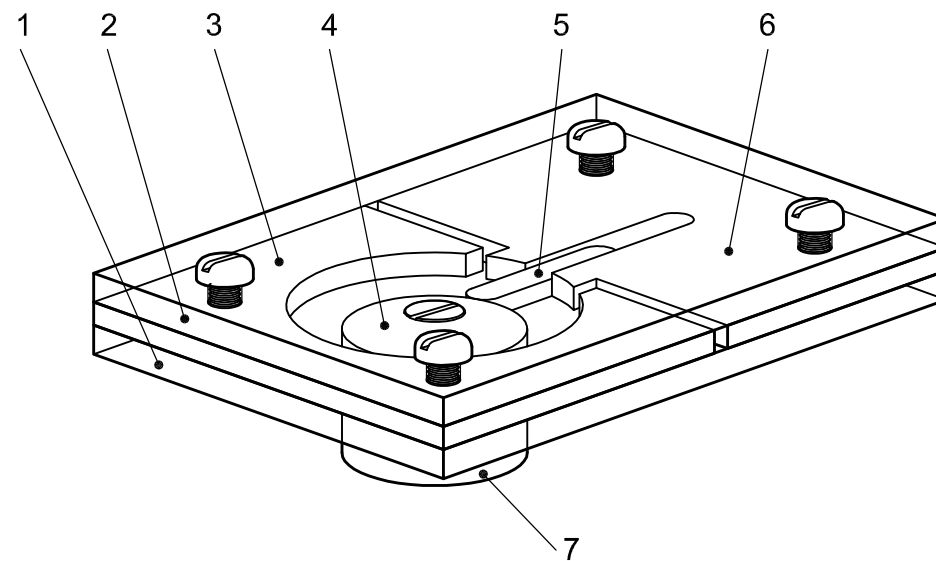
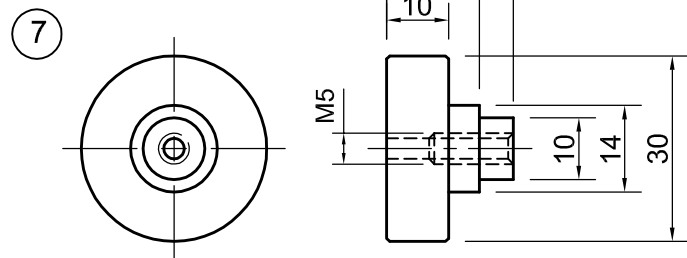


SCRÚDUIMHIR  
EXAMINATION NUMBER

SONRAÍ CÓIMEÁLA  
ASSEMBLY DETAILS

Ba chóir go sleamhnódh  
Páirt 5 go saorálach i bPáirt 6.  
Part 5 should slide freely in Part 6.

Tá tábhacht ag baint le cruinneas,  
le bailchríoch agus le hoibriú.  
Accuracy, finish and function are important.





## Coimisiún na Scrúduithe Stáit

## SCRÚDÚ AN TEASTAIS SHÓISEARAIGH, 2012

MIOTALÓIREACHT  
TEICNÍOCHTAÍ AGUS DEARADH – SCRÚDÚ PRAITICIÚIL

Ardleibhéal – 150 Marc

30 Aibreán - 11 Bealtaine, 9:30 - 12:30 nó 2:00 - 5:00

## LÉIGH NA TREORACHA SEO GO CÚRAMACH IAD LE DO THOIL

## TREORACHA

- (a) Ba chóir don **mhúinteoir** Scrúduimhir an Iarrthóra a ghreanadh nó a scríobadh san ionad a thaispeántar ar an líníocht. Mura bhfuil an triailphíosa curtha le chéile, ní mór an Scrúduimhir a thaispeáint ar gach píosa ar leith den triailphíosa.
- (b) Níl sé de chead ag iarrthóirí caidreamh a bheith acu lena chéile ná cúnaimh a thabhairt dá chéile.
- (c) Áit a mbaintear úsáid as **cruach bhog** ní mór na páirteanna críochnaithe a spraeáil le haerasól trédhearcadh chun meirg a chosc.

As na hábhair a sholáthraítear, an **Mheicníocht** a thaispeántar sna líníochtaí a dhéanamh sa chruth agus de réir na dtoisí a shonraítear.

PÁIRT	ÁBHAR	PRÓISEAS
1	Aicrileach thrédhearcach	A mharcáil amach agus a dhruileáil.
3	Alúmanam	A mharcáil amach, a dhruileáil agus a dheilbhiú.
5	Prás	A mharcáil amach agus a dheilbhiú.
6	Alúmanam	A mharcáil amach, a dhruileáil agus a dheilbhiú.

- Nóta:** (i) Ullmhaítear cuid den obair ar Pháirt 1 agus ullmhaítear Páirt 2, 4 agus 7 roimh lá an scrúdaithe.  
Ag baint úsáid as na scriúna, agus as na cnónna a sholáthraítear, déan an mheicníocht faoi mar atá sa líníocht chóimeála.
- (ii) Tá tábhacht ag baint le cruinneas, le bailchríoch agus le hoibriú.