

WARNING

You must return this paper with your answer book. Otherwise marks will be lost.

Write your Examination Number here:



Coimisiún na Scrúduithe Stáit State Examinations Commission

JUNIOR CERTIFICATE EXAMINATION, 2015

GEOGRAPHY – ORDINARY LEVEL

SECTION 1 – FOLDER (60 marks)

FRIDAY, 5 JUNE – MORNING, 9.30 – 11.30

NOTE: SECTION 2 OF THIS PAPER IS SUPPLIED SEPARATELY

SECTION 1 (60 marks)

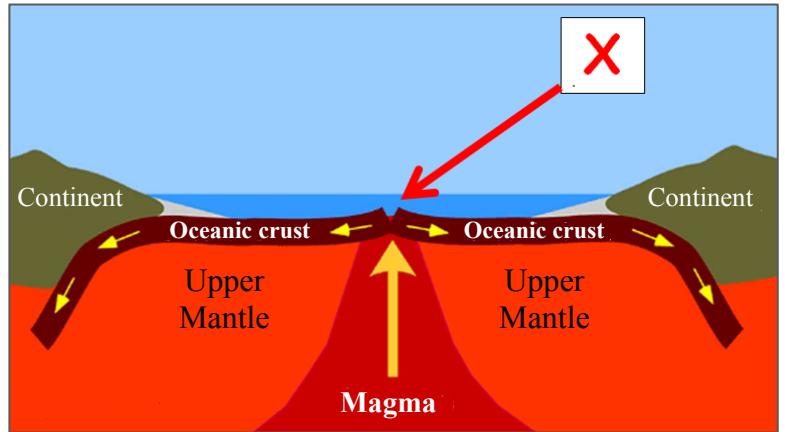
Answer **ALL** questions.
You have a choice within four questions.
Be sure to return this folder with your answer book.
Otherwise, marks will be lost.

1. SHAPING THE EARTH'S CRUST

This diagram shows two plates separating.

The feature labelled **X** is called a:

- Mid-Ocean Ridge
- Continent
- U-shaped valley
- Fold mountain



www.fastie.net

Tick (✓) the correct box.

2. WEATHERING

This photograph shows loose rock on Croagh Patrick, in County Mayo.

This loose rock is called:

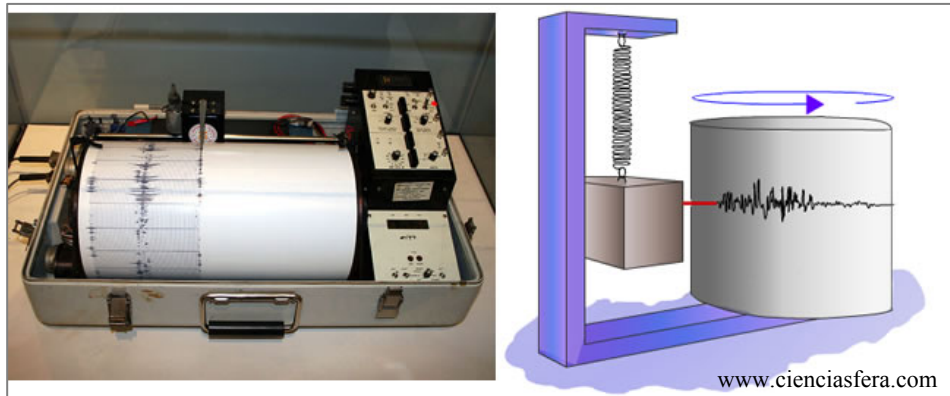
- Moraine
- Scree
- An avalanche
- Alluvium



www.mountainviews.ie

Tick (✓) the correct box.

3. EARTHQUAKES



The instrument shown above is used to measure and record the strength of earthquakes.

This instrument is called a(n):

Barometer

Seismograph

Anemometer

Tick (✓) the correct box.

4. ROCKS

This photograph shows a piece of limestone rock containing fossils.

Limestone is a(n):

Metamorphic rock

Sedimentary rock

Igneous rock

Tick (✓) the correct box.



5. SOILS

This photograph shows a typical brown soil profile.

Brown soils are:

Less fertile, suffer from leaching and are suitable for forestry.

Fertile and suitable for crops and grazing.

Found in desert regions.



Tick (✓) the correct box.

6. STATISTICS IN GEOGRAPHY

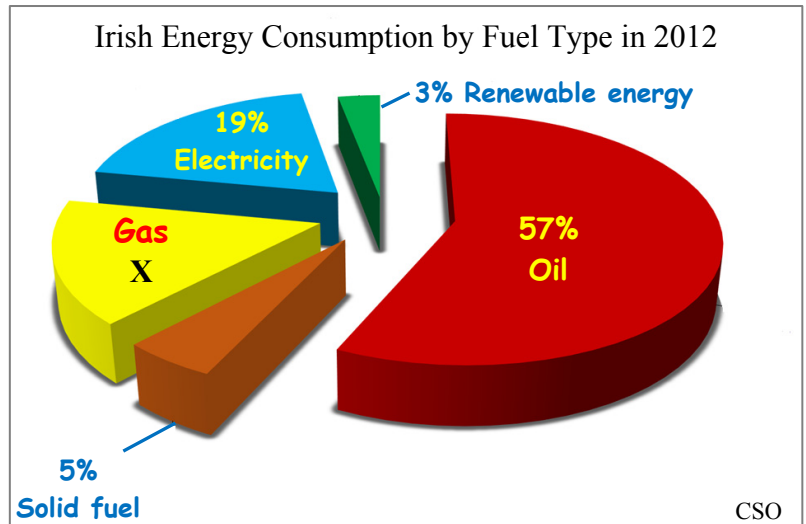
Look at the pie chart opposite. It shows Irish Energy consumption by fuel type in 2012.

The percentage of gas consumed in 2012, labelled X, was:

6%

16%

26%



Tick (✓) the correct box.

7. ANSWER EITHER 7A OR 7B

7A. GLACIATION

The glacial landform shown in this photograph is called a(n):

Drumlin

Esker

Corrie / cirque (tarn)

Tick (✓) the correct box.



OR

7B. COASTS

The coastal landforms labelled X in this photograph are called:

Sea stacks

Stalagmites

Spits

Tick (✓) the correct box.

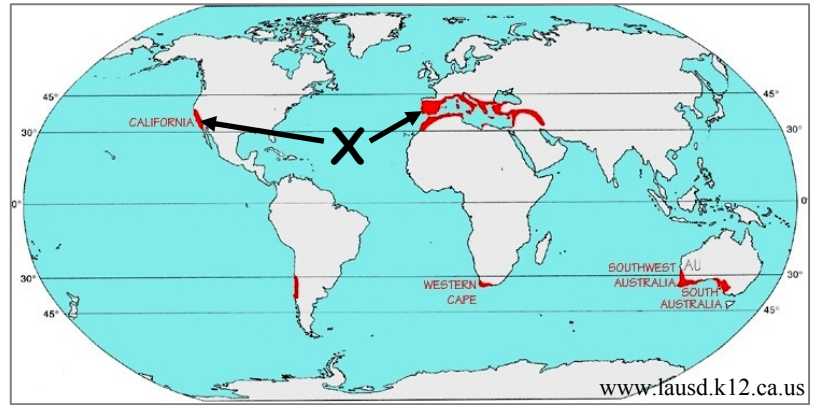


8. ANSWER EITHER 8A OR 8B

8A. CLIMATE TYPES

The climate type at the areas shaded red, for example at X, is:

- Mediterranean
- Boreal
- Cool temperate oceanic
- Savanna



Tick (✓) the correct box.

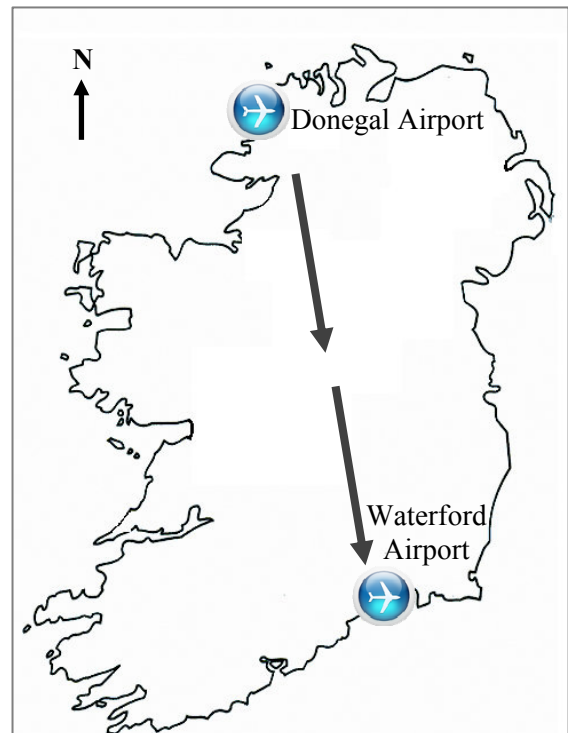
OR

8B. COMMUNICATION LINKS

If you flew from Donegal airport to Waterford airport in which direction would you be travelling?

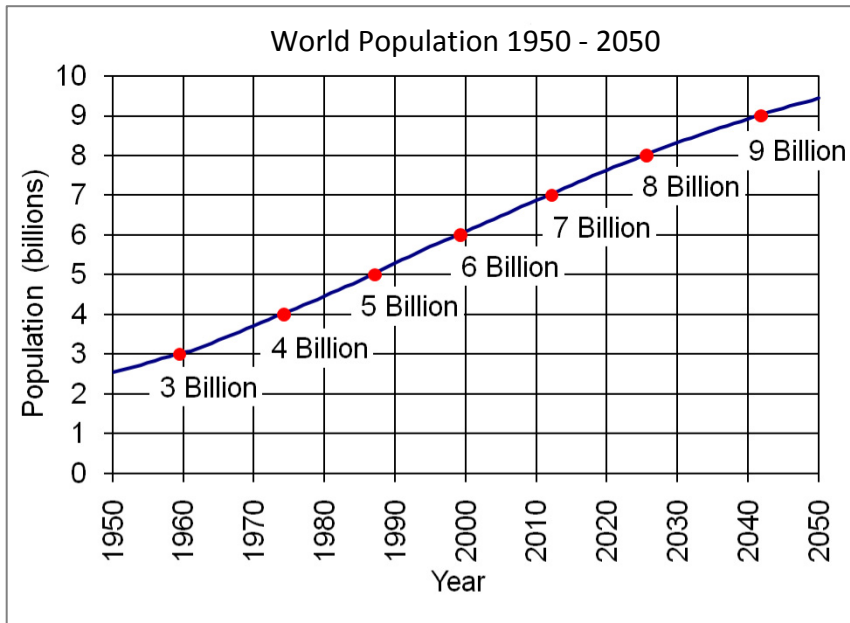
- From South-East to North-West
- From North-West to South-East
- From South-East to North-East
- From North-West to South-West

Tick (✓) the correct box.



9. ANSWER EITHER 9A OR 9B

9A. POPULATION



www.census.gov

Look at the world population graph above. The population of the world to the nearest billion in the year **2000** was:

- 5 billion
- 6 billion
- 7 billion
- 8 billion

Tick (✓) the correct box.

OR

9B. DISTANCE ON THE MAP

Look at the Ordnance Survey map supplied with this paper.

The distance in kilometres along the N70 road from the Post Office at **V 853 697** to the T-Junction at **V 905 713** is:

- 11 kilometres
- 5.5 kilometres
- 3.4 kilometres

Tick (✓) the correct box.

10. ANSWER EITHER 10A OR 10B

10A. MEASURING WEATHER

Look at the map opposite which shows lines joining points of equal air temperature.

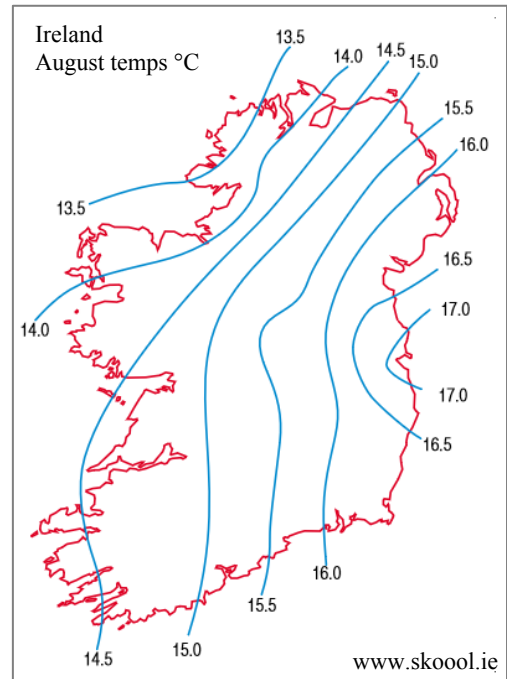
These lines are called:

Isohyets

Isobars

Isotherms

Tick (✓) the correct box.



OR

10B. URBAN GEOGRAPHY

The unplanned growth and expansion of a city is called:

Traffic congestion

Urban sprawl

Crime

Tick (✓) the correct box.

11. SETTLEMENT FUNCTIONS

Defence



Industrial



Residential



Look at the photographs above. Settlements can be classified by function.

Which of these functions is **no longer** common in Ireland?

Defence

Industrial

Residential

Tick (✓) the correct box.

12. ENERGY

Solar Panels



www.dfwsolarelectric.com

Peat Power Station



www.esb.ie

Hydro-Electric Power Station



Which one of the photographs above shows a **non-renewable** energy source?

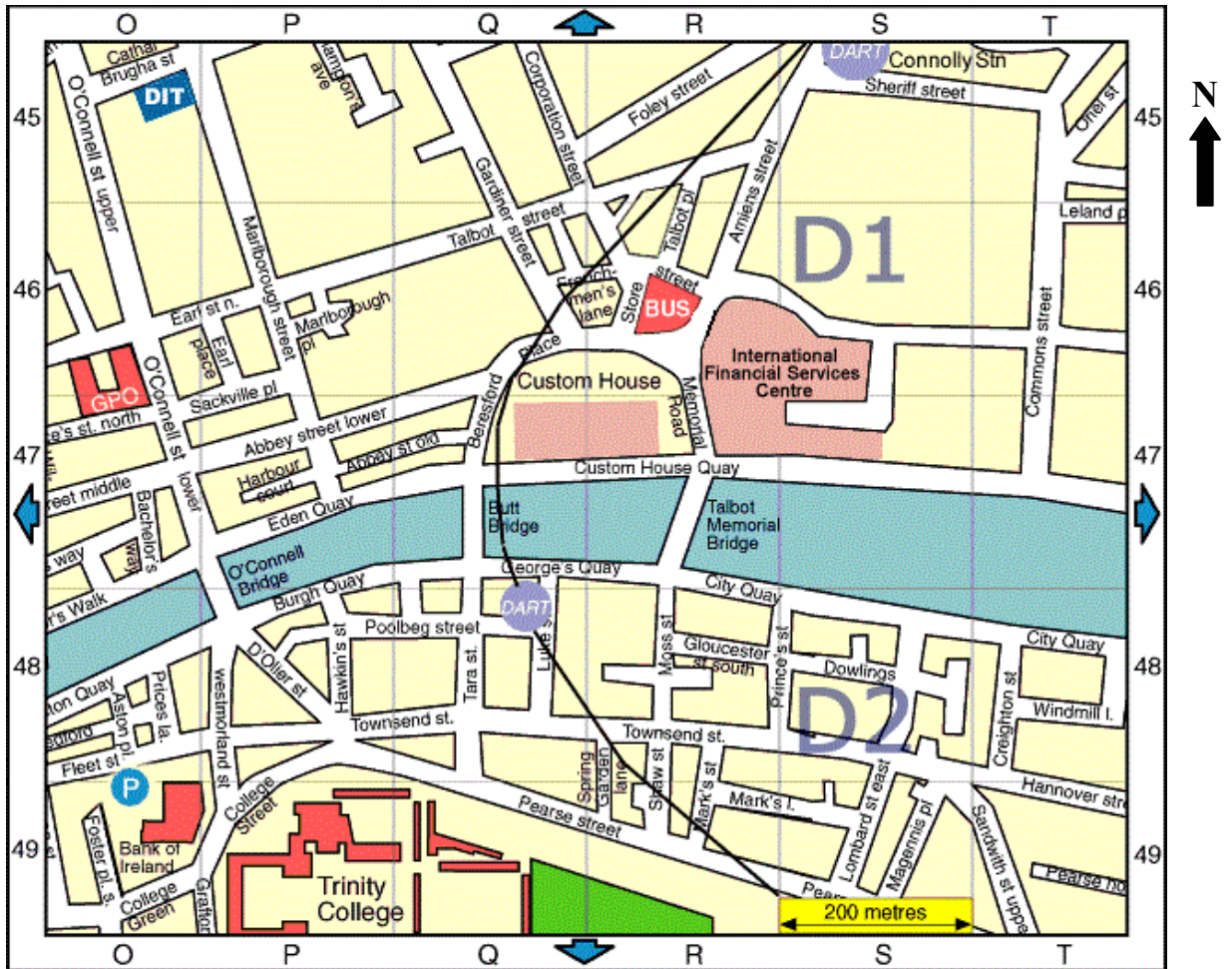
Solar panels

Peat power station

Hydro-electric power station

Tick (✓) the correct box.

13. STREET MAP LOCATIONS

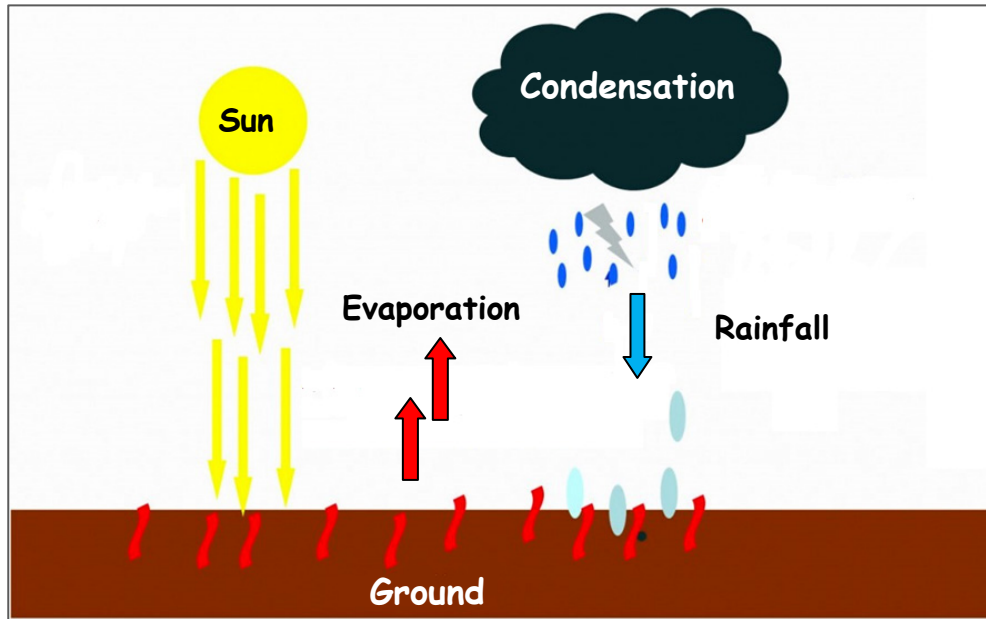


www.softguides.com/Dublin

Look at the map above and circle the correct answer in each of the statements below.

- (i) An example of an educational facility located in the south-west of the map is ***Trinity College / DIT***.
- (ii) Connolly Station is located in the ***North-East / North-West*** of the map.
- (iii) If you walked east along Georges Quay and crossed Talbot Memorial Bridge, you would reach ***Burgh Quay / Custom House Quay***.

14. RAINFALL



Amended from www.sagegeography.myschoolstuff.co.za

The type of rainfall illustrated in the diagram above is:

- Frontal rainfall
- Relief rainfall
- Convectional rainfall

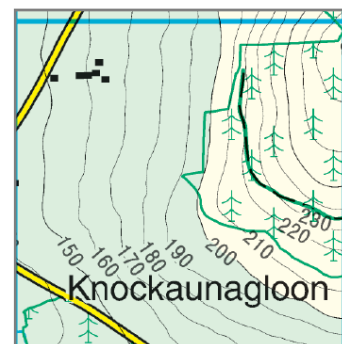
Tick (✓) the correct box.

15. SETTLEMENT

Look at the map extract shown opposite.

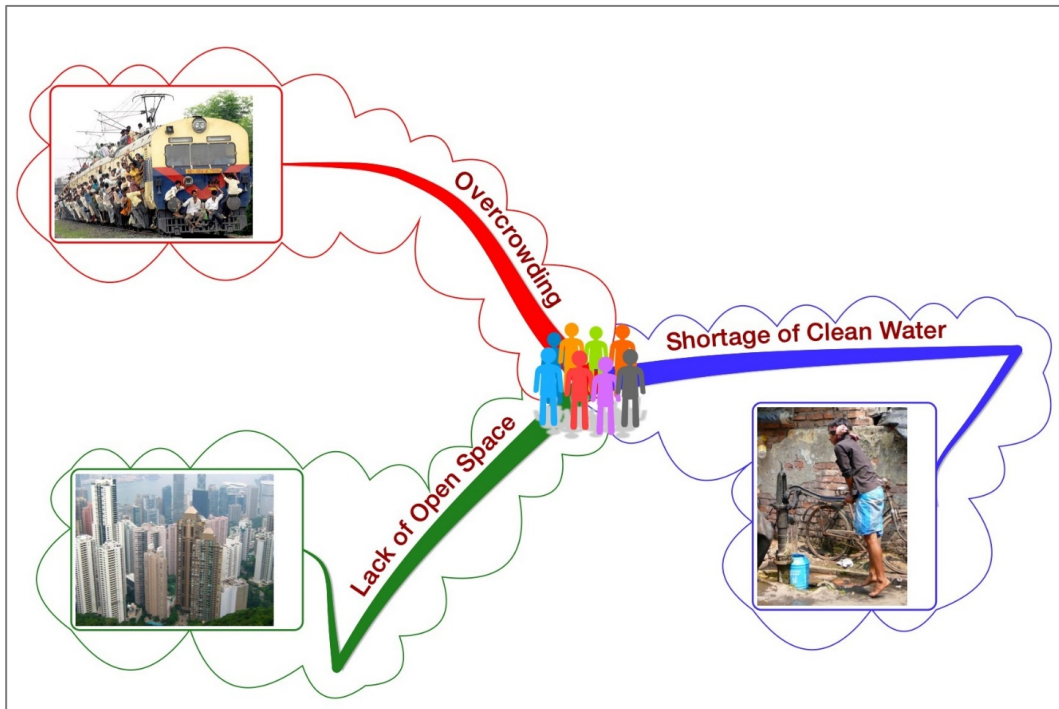
The main settlement pattern shown is:

- Linear
- Nucleated / clustered
- Dispersed



Tick (✓) the correct box.

16. POPULATION DENSITY



www.chiandiscover.org, www.shalusharma.com, www.dinabennett.net

The information above represents an area with:

Low population density

High population density

Tick (✓) the correct box.

17. GRID REFERENCES

Look at the Ordnance Survey map supplied with this paper.

The tourist feature at grid reference **V 918 718** is a:

Golf Course

Caravan Park

Forest Park

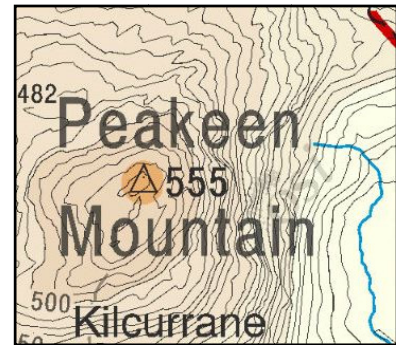
Tick (✓) the correct box.

18. GRID REFERENCES

Look at the Ordnance Survey map supplied with this paper and the extract of this map below.

The grid reference for Peakeen Mountain, to the north of Kenmare is:

- V 91 77
- V 76 90
- V 90 76



Tick (✓) the correct box.

19. AERIAL PHOTOGRAPH

Study the aerial photograph of Kenmare supplied with this paper.

The main land-use in the Left Foreground is:

- Woodland
- Industrial
- Agricultural

Tick (✓) the correct box.

20. MIGRATION

Push factors and *pull factors* influence people to move or migrate.

In the box below, circle the **THREE** examples of **push** factors.

Flooding	Good climate	Lack of services
More fertile land	War	More jobs

Blank Page

Blank Page

Blank Page