

## **WARNING**

**You must return this paper with your answer book. Otherwise you will lose marks.**

Write your Examination Number here:



# **Coimisiún na Scrúduithe Stáit State Examinations Commission**

**JUNIOR CERTIFICATE EXAMINATION, 2014**

---

**GEOGRAPHY – ORDINARY LEVEL**

**SECTION 1 – FOLDER (60 marks)**

---

**FRIDAY, 6 JUNE – MORNING, 9.30 - 11.30**

**NOTE: SECTION 2 OF THIS PAPER IS SUPPLIED SEPARATELY**

## SECTION 1 (60 marks)

Answer **ALL** questions.  
You have a choice within four questions.  
Be sure to return this folder with your answer book.  
Otherwise, you will lose marks.

### 1. EARTHQUAKES

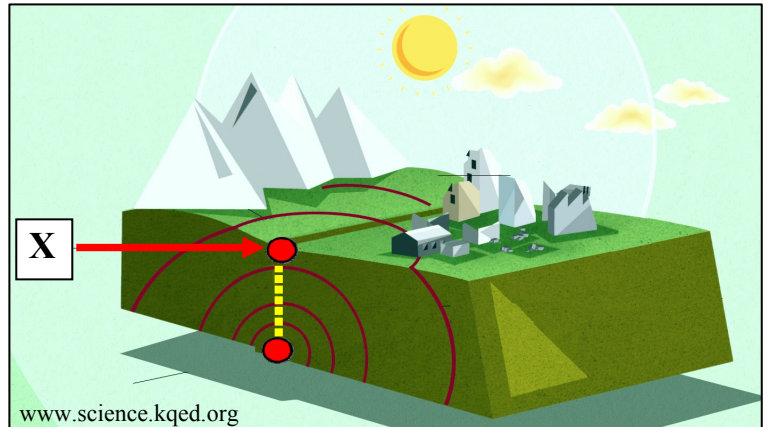
The feature labelled **X** is:

The Epicentre

A Shockwave

A Seismograph

Tick (✓) the correct box.



### 2. THE EARTH'S CRUST

The process shown in the diagram is called:

Erosion

Mass movement

Folding

Continental drift

Tick (✓) the correct box.



### 3. VOLCANOES

This photograph taken from space shows a volcanic eruption.

This volcano is:

Extinct

Active

Dormant

Tick (✓) the correct box.



### 4. STATISTICS IN GEOGRAPHY – FAIRTRADE



Look at the information shown about Fairtrade.

Circle the correct answer in each of the statements below.

- The number of Fairtrade producer organisations worldwide is **1149 / 70**.
- There are over 1.3 million Fairtrade farmers and workers in **20 / 70** countries.
- Producers have **50% / 20%** of the votes in decision making.

5. **ROCKS**



The rock in photograph **A** is sometimes used to make fireplaces, as shown in photograph **B**.

This rock is called:

Coal

Basalt

Marble

Tick (✓) the correct box.

6. **WEATHERING**

The rock shown in the picture has been cracked by:

Freeze-thaw action

Chemical weathering

Plants and animals



Tick (✓) the correct box.

**7. MASS MOVEMENT**

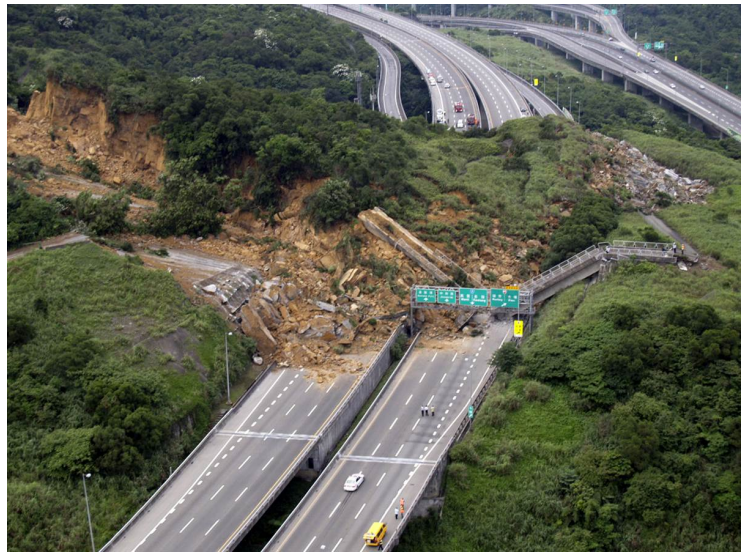
The type of mass movement in this photograph is called:

Soil creep

Avalanche

Landslide

Tick (✓) the correct box.



www.wordpress.com

**8. SOILS**

This diagram shows a typical profile of a brown earth.

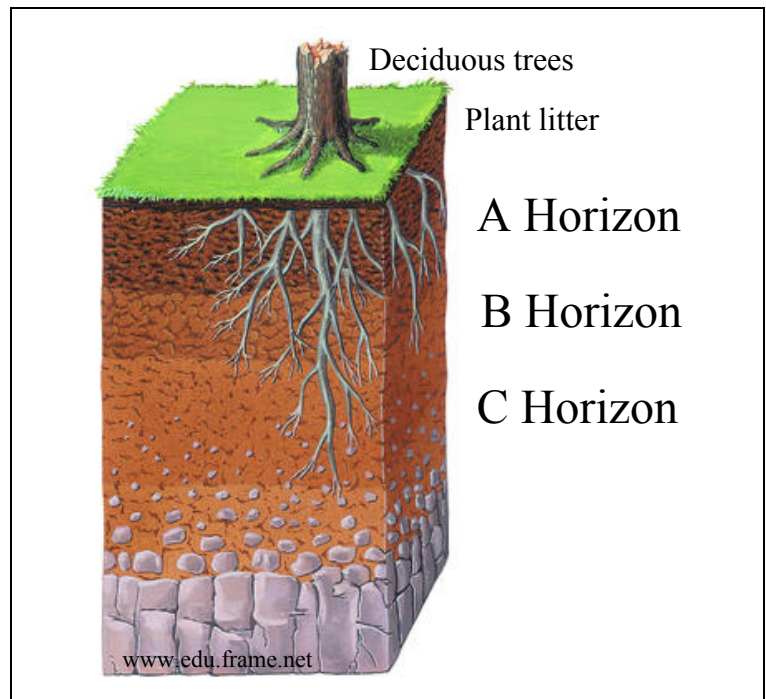
At which level of the soil profile are you most likely to find humus?

A Horizon

B Horizon

C Horizon

Tick (✓) the correct box.





9. ANSWER EITHER 9A OR 9B

9A. COASTAL PROCESSES

The landform shown in the photograph is called a:

Sand spit

Tombolo

Stack

Tick (✓) the correct box.



OR

9B. GLACIATION

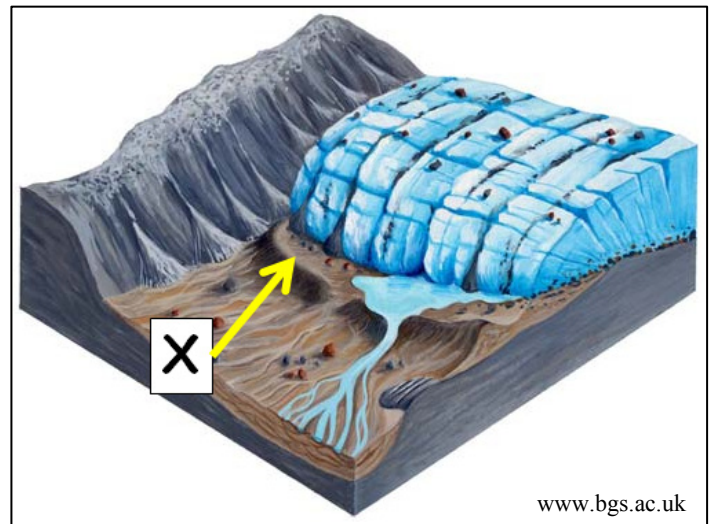
The material labelled X, deposited by a glacier is called:

A Corrie (cirque)

A Drumlin

Moraine

Tick (✓) the correct box.



**10. ANSWER EITHER 10A OR 10B**

**10A. NATURAL VEGETATION AND CLIMATE**

In which type of climate would you expect to find the vegetation shown in the photograph?



Hot desert

Mediterranean

Boreal

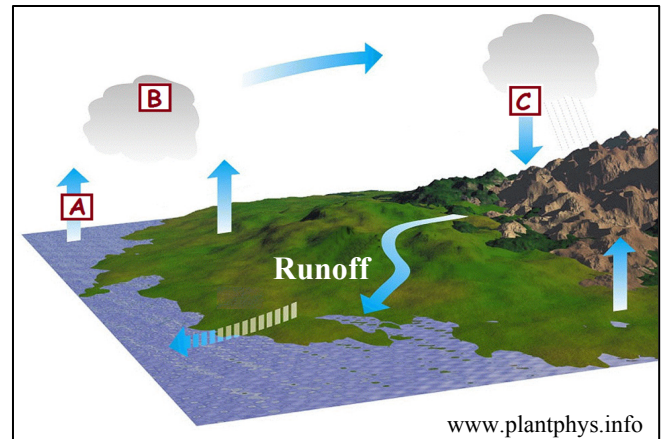
Tick (✓) the correct box.

**OR**

**10B. THE WATER CYCLE**

This diagram shows the Water Cycle (Hydrological Cycle).

In which of the following lists are **A**, **B** and **C** correctly named?



A Evaporation, B Condensation and C Precipitation

A Condensation, B Precipitation and C Evaporation

A Precipitation, B Condensation and C Evaporation

Tick (✓) the correct box.

**11. ANSWER EITHER 11A OR 11B**

**11A. DISTANCE ON A MAP**

Look at the Ordnance Survey map supplied with this paper.

The distance in a straight line ('as the crow flies') from the Post Office at **X 257 934** to the Camping site at **X 296 923** is:

5 kilometres

4 kilometres

8 kilometres

Tick (✓) the correct box.

**OR**

**11B. WEATHER FRONTS**

Look at the diagram showing two different weather fronts.

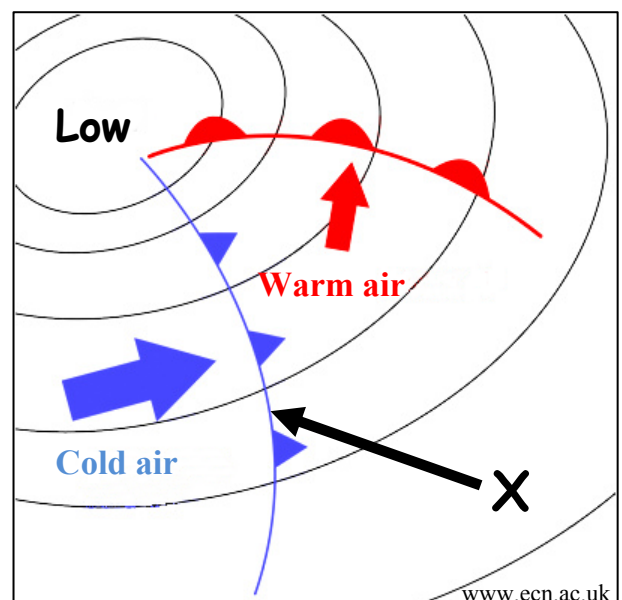
The front labelled **X** is called:

A Warm front

A Cold front

An Occluded front

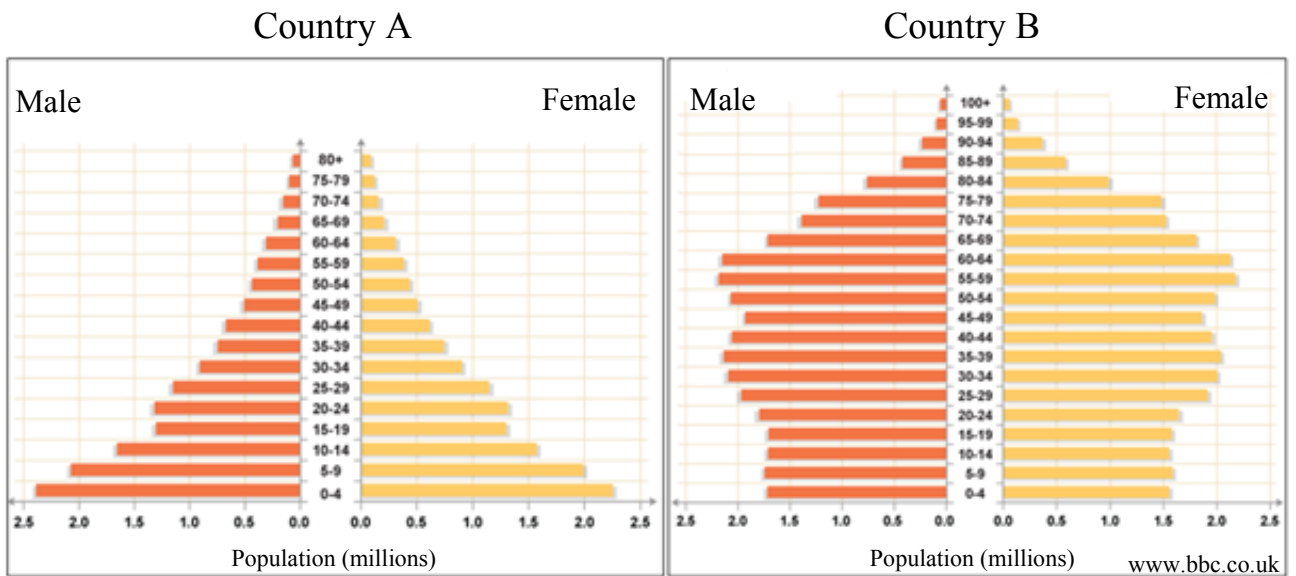
Tick (✓) the correct box.





12. ANSWER EITHER 12A OR 12B

12A. POPULATION



Examine the population pyramids shown above.

Which country has a higher Birth Rate?

Country A

Country B

Tick (✓) the correct box.

OR

12B. COMMUNICATION LINKS

If you travelled by bus from Tralee to Dundalk, in which direction would you be travelling?

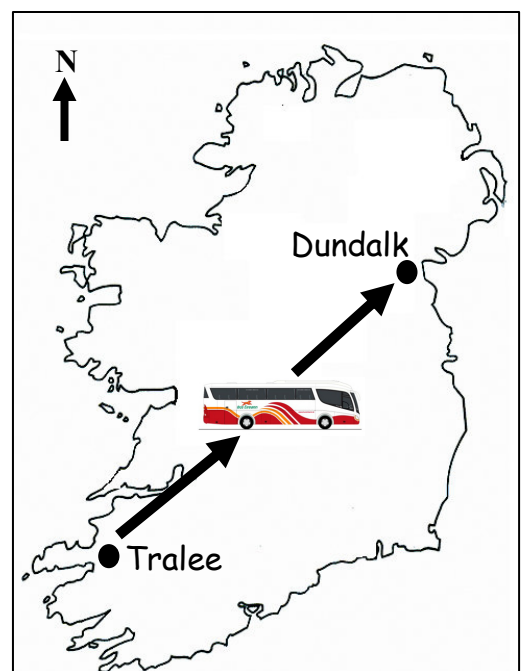
From South-East to North-West

From North-East to South-East

From South-West to North-East

From North-West to South-West

Tick (✓) the correct box.



**13. ECONOMIC ACTIVITIES**



Which of the photographs above shows an example of a **tertiary** economic activity?

Drilling for gas

Irish Naval Service

Fishing

Tick (✓) the correct box.

**14. AERIAL PHOTOGRAPH**

Study the aerial photograph of Dungarvan supplied with this paper.  
The main land-use in the Centre Background is:

Residential

Commercial

Industrial

Tick (✓) the correct box.

**15. GRID REFERENCES**

Look at the Ordnance Survey map supplied with this paper.  
The antiquity at grid reference **X 234 971** is a:

Standing Stone

Holy Well

Castle

Tick (✓) the correct box.

**16. GRID REFERENCES**

Look at the Ordnance Survey map supplied with this paper.

What is the grid reference for the golf course at Knocknagránagh, to the north-east of Dungarvan?

X 28 95

X 21 97

S 95 28

Tick (✓) the correct box.

**17. SETTLEMENT**

Look at the map extract shown opposite.

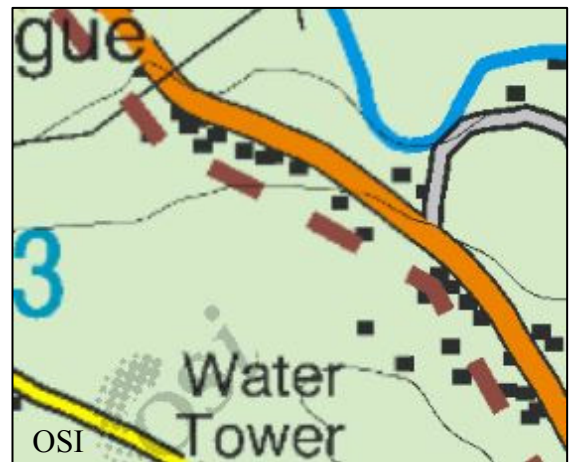
The main type of settlement pattern shown is:

Linear

Nucleated

Dispersed

Tick (✓) the correct box.



**18. WOMEN IN THE WORKFORCE**

The pie chart shows information regarding women in the workforce in Ireland in 2011.

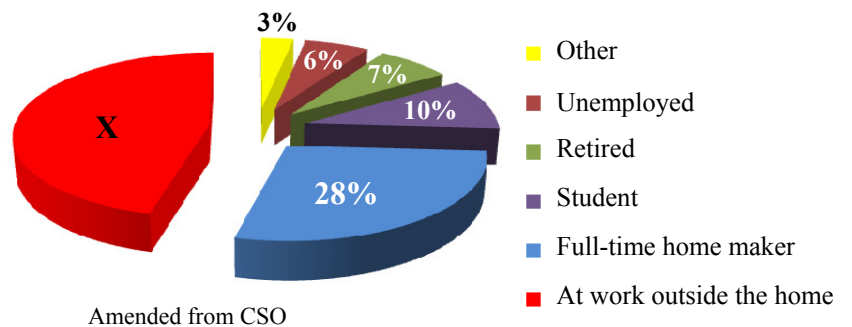
The percentage of women at work outside the home, in 2011, labelled X was:

54%

46%

6%

Tick (✓) the correct box.



**19. SETTLEMENT IN THE NETHERLANDS**



The images above are of planned settlement in the Netherlands, built on land reclaimed from the sea.

This reclaimed land is known as a:

- Lagoon
- Levée
- Polder

Tick (✓) the correct box.

**20. AID**

‘Bilateral Aid’ is the term given to aid from:

- Governments to world organisations such as the United Nations.
- One government to another government.
- Non-Government Organisations (NGOs) such as Concern.

Tick (✓) the correct box.