

# WARNING

You must return this paper with your answerbook, otherwise marks will be lost.

Write your Examination Number here

AN ROINN OIDEACHAIS AGUS EOLAÍOCHTA

JUNIOR CERTIFICATE EXAMINATION, 2002

GEOGRAPHY – ORDINARY LEVEL

SECTION 1 - FOLDER

MONDAY, 10 JUNE - AFTERNOON, 1.30 to 3.30

**N.B. SECTION 2 OF THIS PAPER IS SUPPLIED SEPARATELY.**

**SECTION 1 (60 MARKS)**

**ALL** questions to be answered.

You have an either/or choice **WITHIN** 4 questions.

Be sure to return this folder with your answerbook.

Otherwise, marks will be lost.

**1. Acid Rain**

Acid rain is formed when:

Trees are planted in rain forests

Fossil fuels like coal are burned

Glaciers melt

Limestone is weathered

[tick ✓ the correct box]

**2. Rocks**

Sedimentary Rocks are formed:

By earthquakes

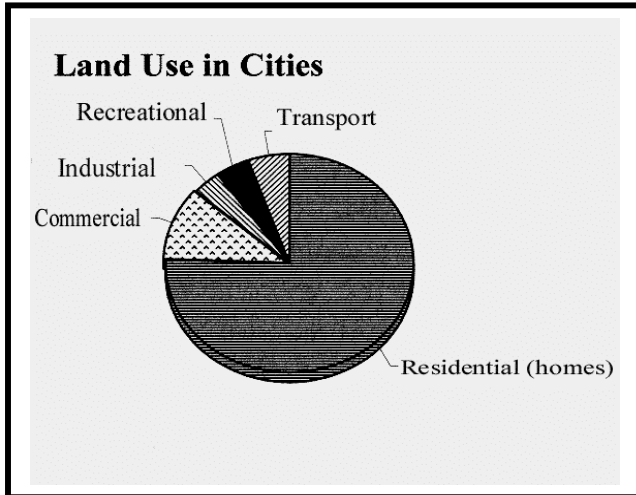
By remains of animals, plants or other rocks being compressed

When volcanoes erupt

When hot, liquid rock cools down

[tick ✓ the correct box]

3. **Land use in cities**



Look at the pie chart showing land use in cities.  
75% (three quarters) of the land is used for:

Commercial

Residential

Uses other than residential

Recreational

[tick ✓ the correct box]

4. **Mass Movement**

Which one of the following is an example of Mass Movement?

Traffic going into the city

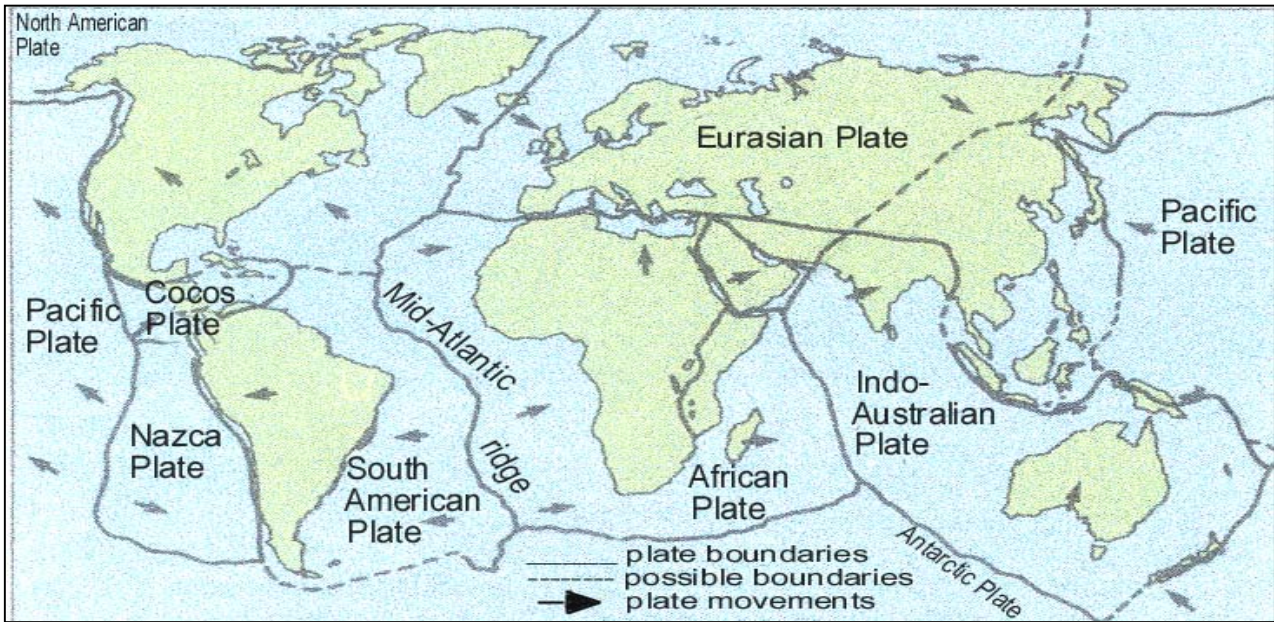
Soil creep

Rainfall

Vegetation

[tick ✓ the correct box]

5. Answer EITHER 5a OR 5b



5a. Plates

Look at the map of Plates on the surface of the Earth.  
Ireland is on:

- The Eurasian Plate
- The South American Plate
- The African Plate
- The Antarctic Plate

[tick ✓ the correct box]

OR

5b. Earthquakes

Earthquakes often occur:

- In Ireland
- At the centre of the plates
- At the edge of the plates
- In Tundra zones

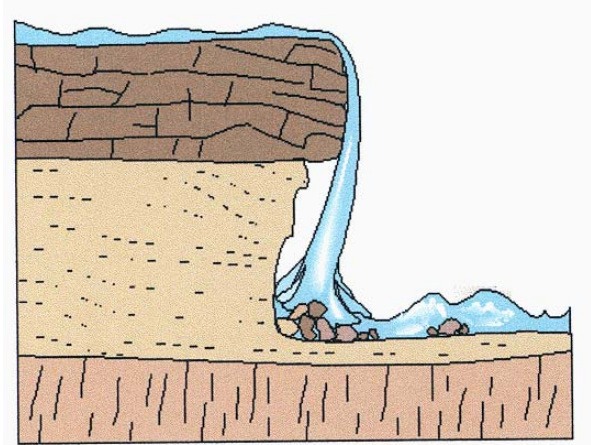
[tick ✓ the correct box]

6. **Erosion**

The feature shown in the diagram is a:

- Beach
- Esker
- Waterfall
- Delta

[tick ✓ the correct box]



7. Answer **EITHER 7a OR 7b**

**7a. Coastal Deposition**

Which one of the following features is formed by deposition from the sea?

- Sand Spit
- Ox bow lake
- V shaped valley
- Sea Stack

[tick ✓ the correct box]

**OR**

**7b. Glacial Deposition**

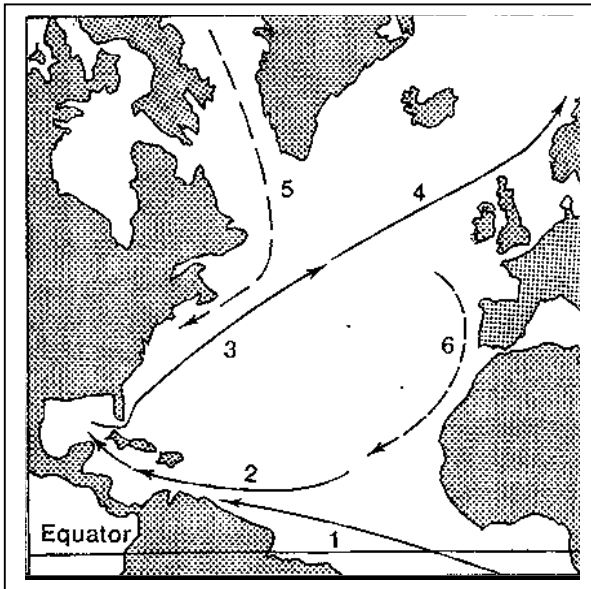
Which one of the following features is formed by glacial deposition?

- Pyramidal peak
- Volcano
- Drumlin
- Meander

[tick ✓ the correct box]

8. Ocean Currents

Look at the map and the key with the names of currents. Which one of these currents brings warm water past the coast of Ireland?



—————> Warm currents  
 - - - - -> Cool currents

1. South Equatorial current
2. North Equatorial current
3. Gulf Stream
4. North Atlantic drift
5. Labrador current
6. Canary current

- Canary Current
- Labrador Current
- North Equatorial Current
- North Atlantic Drift

[tick ✓ the correct box]

9. World Climates

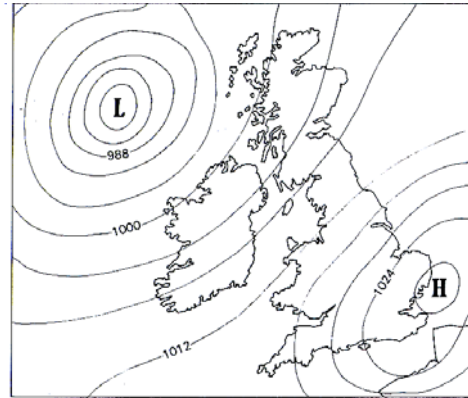
Which one of the following statements best describes **Ireland's** climate?

- Mild winters, warm summers, changeable weather with rain throughout the year
- Very cold and dark winters, short cool summers, light rain
- Very hot, very wet, no seasonal differences
- Hot with a wet season and a dry season

[tick ✓ the correct box]

10. Answer **EITHER 10a OR 10b**

**10a. Weather Chart**



Look at the Weather Chart. North-west of Ireland there is:

- A cold front
- A warm front
- An area of High pressure
- An area of Low pressure

[tick ✓ the correct box]

**OR**

**10b. The Weather Station**

The instrument shown in the photograph measures:

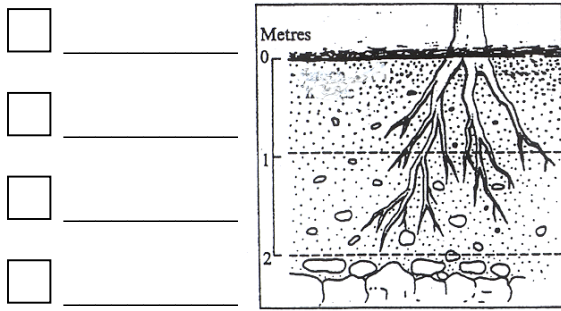
- Temperature
- Windspeed
- Pressure
- Sunshine

[tick ✓ the correct box]



11. **Soils**

At which level in the Soil Profile are you most likely to find **Humus**?



[tick ✓ the correct box]

12. Answer **EITHER 12a OR 12b**

**12a. People on the move (migration)**

Which one of these factors is most likely to cause people to move away from an area (a **Push Factor**)?

- Recreational facilities
- Having a good job
- Warm sunny climate
- War and unrest

[tick ✓ the correct box]

**OR**

**12b. Transport**

The type of transport best suited to import heavy raw materials to a factory in an Irish port is:

- Ship
- Car
- Aeroplane
- Lorry

[tick ✓ the correct box]



13. **The Irish Workforce**

	<b>Sector</b>	1971	1981	1988	1993
% in employment	Agriculture	25	16	13	10
	Manufacturing Industry	28	26	23	23
	Services	41	48	48	50
% of labour force unemployed		6	10	16	17

Look at the table of statistics for employment in the different Sectors. In the **THREE** parts of the question write, in the spaces provided, the correct answers.

In 1971 the percentage employed in **Agriculture** was \_\_\_\_\_ %

In 1993 the percentage employed in **Services** was \_\_\_\_\_ %

In 1981 the percentage of the labour force **unemployed** was \_\_\_\_\_ %

[tick ✓ the correct box]

14. **Economic Activities**

Fire fighters like those in the photograph work in a:

Primary activity

Secondary activity

Tertiary activity



15. **Energy Resources**

Which one of the following is a **renewable resource**?

Peat

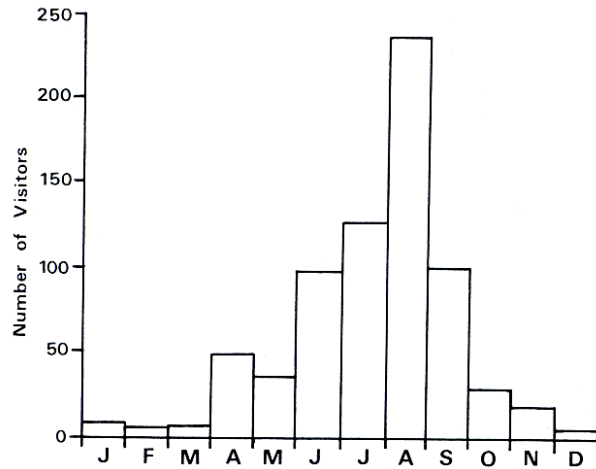
Solar power

Coal

Oil

[tick ✓ the correct box]

16. **Tourism**



Look at the bar graph showing the number of tourists who visited an historic building in a year. The **largest** number visited the building in:

February

April

August

December

[tick ✓ the correct box]

17. **Aid**

When people are starving from a famine in a developing country, the best type of **aid** is:

Tied aid

Food aid

Long term aid

Development aid

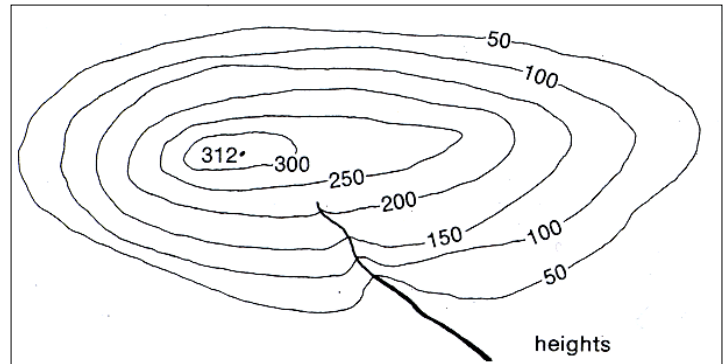
[tick ✓ the correct box]

18. **Mapwork**

The numbered lines on the sketch map are called:

- Railway lines
- Lines of Latitude
- Lines of Longitude
- Contour lines

[tick ✓ the correct box]



19. **Ordnance Survey**

Look at the Ordnance Survey map and legend (key) provided.

Identify the feature located at **W 606 524**:

- 18 hole golf course
- Graveyard
- Ringfort
- Fulacht Fia

[tick ✓ the correct box]

20. **Ordnance Survey**

Look at the map supplied. Imagine a helicopter is travelling in a straight line from Kinsale (**W 63 50**) to Belgooly (**W 66 54**). In which **direction** would it be flying?

- South-west
- South-east
- North-west
- North-east

[tick ✓ the correct box]

AN ROINN OIDEACHAIS AGUS EOLAÍOCHTA

---

**JUNIOR CERTIFICATE EXAMINATION, 2002**

---

**GEOGRAPHY – ORDINARY LEVEL**

---

**SECTION 2**

---

**MONDAY, 10 JUNE - AFTERNOON, 1.30 TO 3.30**

---

**SECTION 1** of this paper is in a separate folder, where spaces are provided for your answers.

**N.B. PLEASE REMEMBER TO RETURN YOUR FOLDER WITH YOUR ANSWER-BOOK.**

**SECTION 2 ( 90 MARKS)**

Answer **THREE** questions.

All questions carry equal marks.

**1. SHAPING THE EARTH'S SURFACE**

A. Name **TWO** features of Glacial Erosion and **TWO** features of Glacial Deposition [4]

**OR**

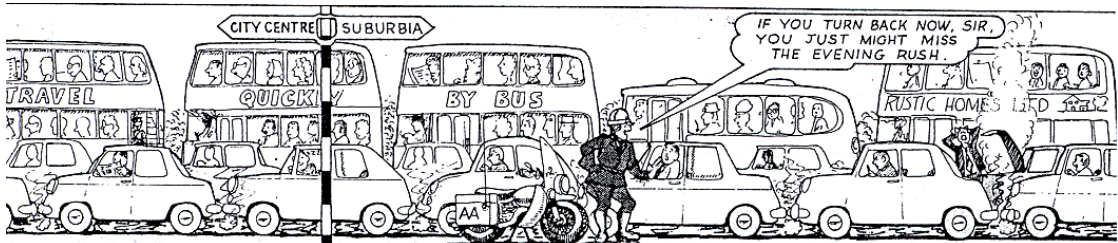
Name **TWO** features of Coastal Erosion and **TWO** features of Coastal Deposition. [4]

B. (i) Draw a diagram of **ONE** feature of river erosion. **Explain** how this feature is formed.

(ii) Draw a diagram of **ONE** feature of river deposition. **Explain** how this feature is formed. [14]

C. Rivers have always been useful to humans. Describe **THREE** ways in which people use rivers. [12]

**2. TOWNS AND CITIES**



Look at the cartoon and answer the following questions.

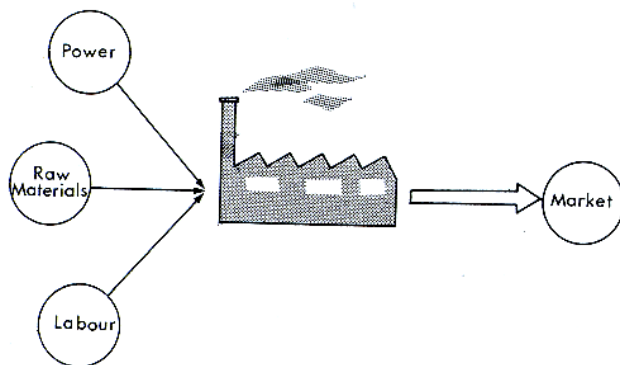
A. (i) Explain why so much traffic goes towards the city centre in the mornings.

(ii) Explain how traffic congestion would be eased by more public transport (buses etc.). [10]

B. Apart from traffic congestion, name **TWO** other problems found in towns and cities. For each one, explain why it makes life in cities difficult. [12]

C. Urban Redevelopment and Urban Renewal are taking place in many towns and cities in Ireland. Describe how this is happening in your town or city **OR** in another one you have studied. [8]

### 3. MANUFACTURING INDUSTRIES



Manufacturing industries are important employers in Ireland.  
All these industries have inputs, processes and outputs.

- A. Name a factory or industry you have studied. List **TWO** inputs, **TWO** processes and **TWO** outputs for this factory or industry. [8]
- B. For the factory or industry you chose above – name and explain **THREE** factors which have influenced its location (where it has been built). [12]
- C. Describe **TWO** ways in which manufacturing industry can cause pollution. [10]

### 4. ORDNANCE SURVEY MAP AND AERIAL PHOTOGRAPH

Look at the Ordnance Survey map and legend (key) provided.

- A. Draw a sketch map of the area shown on the **map**. Mark on and identify:
- the coast
  - the built up area of Kinsale
  - the R605 road
  - a golf course
  - a parking place with a picnic site [12]
- B. Look again at the Map **AND** the Aerial Photograph.
- Give **ONE** piece of evidence from the map and **ONE** piece of evidence from the photograph that Kinsale is used as a harbour. From the map and photograph explain **TWO** reasons why it is suitable as a harbour. [10]
- C. It has been suggested that an hotel should be built at the Old fort / Castlepark area (W 64 49). Describe **ONE** advantage and **ONE** disadvantage for building the hotel at this location. [8]

5. **A GEOGRAPHICAL MIX**

Answer **ANY THREE** of the questions: **A, B, C, D.**

**A. AERIAL PHOTOGRAPH**

Using evidence from the photograph, state **TWO** advantages and **ONE** disadvantage of living in the housing estate in the left-background of the photograph. [10]

**B. AERIAL PHOTOGRAPH**

Imagine you are on holiday in Kinsale. Write a post card to a friend and on it list **FOUR** attractions or facilities which can be seen on the photograph. [10]

**C. FISHING**

Describe **TWO** results of over-fishing in the seas around Ireland. Briefly describe **TWO** types of modern technology found on fishing boats which have led to over-fishing. [10]

**D. CLIMATE STUDIES**

Choose **ONE** of these HOT climates you have studied:

**Equatorial OR Savanna type OR Hot desert**

- (i) Briefly describe the temperature **and** rainfall.
- (ii) Describe **ONE** way in which the climate has affected humans. [10]