

**WARNING**

You must return this paper with your answer book. Otherwise marks will be lost.

Write your Examination Number here:



**Coimisiún na Scrúduithe Stáit  
State Examinations Commission**

**JUNIOR CERTIFICATE EXAMINATION, 2012**

**GEOGRAPHY – HIGHER LEVEL**

**SECTION 1 – FOLDER (60 marks)**

**FRIDAY, 8 JUNE – MORNING, 9.30 - 11.30**

Folder Marking Grid					
	Questions		Mark	Examiner	Advising Examiner
		@	3		
		@	2		
		@	1		
		@	0		
<b>Total</b>					

**NOTE: SECTION 2 OF THIS PAPER IS SUPPLIED SEPARATELY**

## SECTION 1 (60 marks)

Answer **ALL** questions.  
You have a choice within three questions.  
Be sure to return this folder with your answer book.  
Otherwise, marks will be lost.

### 1. ROCKS



A rock with large crystals that formed inside the earth's crust.

[www.utexas.edu](http://www.utexas.edu)

Examine the photograph above and circle the correct answer in each of the statements below.

- (i) The name of this rock is *granite* / *basalt*.
- (ii) This rock is *an igneous* / *a sedimentary* rock.
- (iii) An example of this rock is found in the *Burren* / *Wicklow*.

### 2. EARTHQUAKES

Complete the following sentences.

- (i) The origin of an earthquake is known as the \_\_\_\_\_.
- (ii) A tidal wave created by an earthquake is known as a \_\_\_\_\_.
- (iii) The scale used to measure earthquakes is the \_\_\_\_\_.

### 3. LIMESTONE

In the boxes provided, match each of the letters in **Column X** with the number of its pair in **Column Y**. One match has been made for you.

Column X		Column Y		X	Y
A	Stalagmite	1	Deep cracks in the limestone pavement.	A	
B	Clints	2	Deposits of calcite hanging from the roof of a cave.	B	
C	Stalactite	3	Blocks of limestone.	C	
D	Grikes	4	Deposits of calcite on the floor of a cave.	D	1

### 4. MASS MOVEMENT

Circle the correct option in each of the statements below.

- (i) Mudflows are one of the fastest forms of mass movement. *True / False*
- (ii) Mudflows occur in dry areas. *True / False*
- (iii) Gradient is very important for mass movement. *True / False*

### 5. INDUSTRY

Which of the following groups are all examples of people involved in secondary economic activity?

Dentist, farmer, Garda, taxi driver.

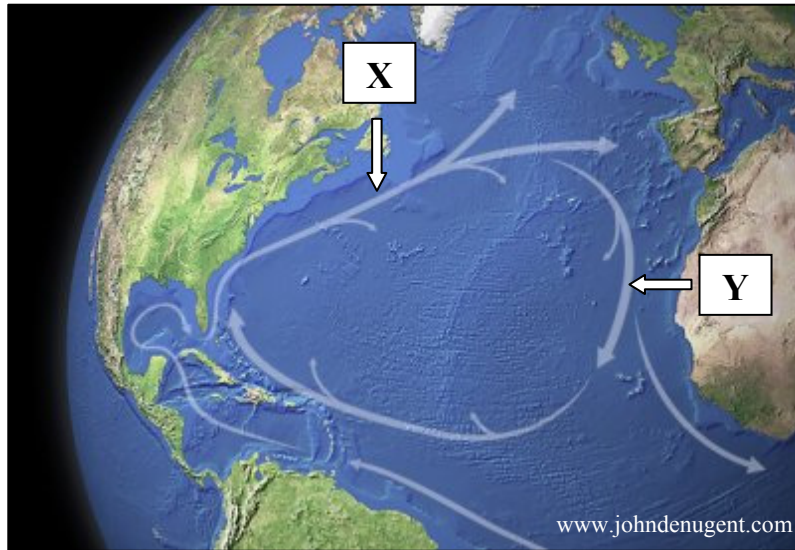
Teacher, insurance official, nurse, journalist.

Bank official, miner, shopkeeper, plumber.

Baker, factory worker, cabinet maker, brewer.

Tick (✓) the correct box.

## 6. OCEAN CURRENTS



Examine the map above.

Circle the correct answer in each of the statements below.

- (i) The current at **X** is a *warm / cold* current.
- (ii) The current at **Y** is a *warm / cold* current.
- (iii) The current at **X** is called the *Labrador Current / North Atlantic Drift*.

## 7. WEATHER PATTERNS

Indicate which **three** statements below are correct by ticking (✓) the correct box.

- 1. The prevailing winds in Ireland are south westerly.
- 2. The average annual temperature in Ireland is 20°C.
- 3. Anticyclones are associated with good weather conditions.
- 4. The Atlantic Ocean has no influence on weather conditions in Ireland.
- 5. Relief rainfall is common on the west coast of Ireland.

1, 2, 3

2, 3, 4

1, 3, 5

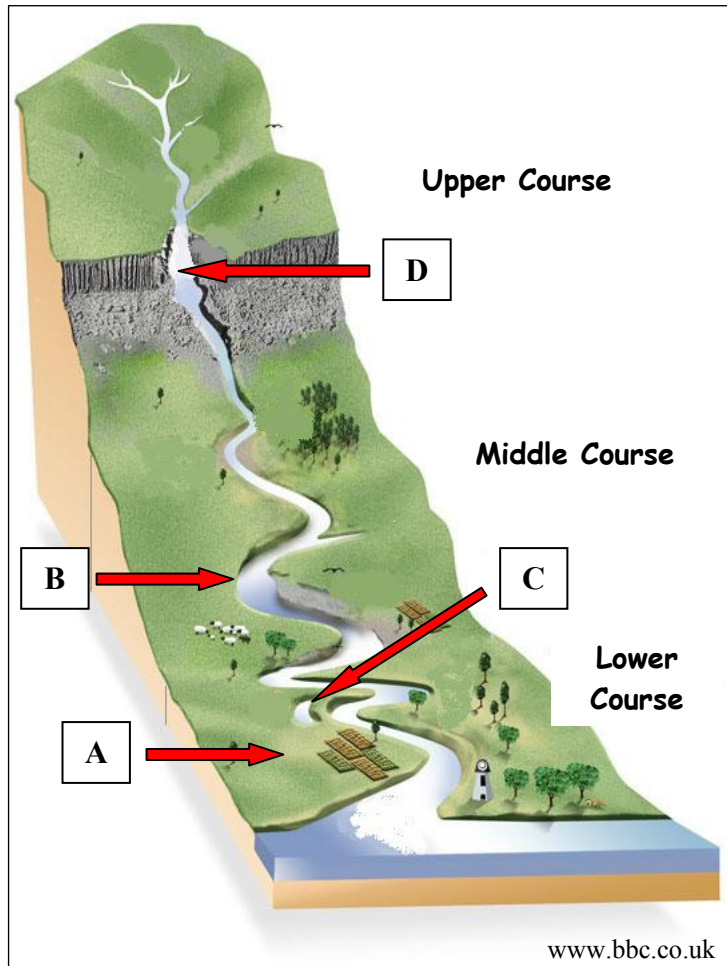
2, 4, 5

## 8. RIVERS

The diagram below shows the course of a river.

Give the correct location for each of the river features shown on the diagram, by writing the correct letter beside each feature named in the table below.

One pair has been completed for you.



Feature	Letter
Meander	B
Oxbow lake	
Waterfall	
Floodplain	

**ANSWER EITHER 9A OR 9B**

**9A. COASTS**

Which of the following are all features of **coastal deposition**?

Sea cliff, sea cave, sea stack.

Tombolo, spit, bar.

Beach, sea arch, headland.

Tick (✓) the correct box.

**OR**

**9B. GLACIATION**

Which of the following are all features of **glacial deposition**?

Eskers, moraines, drumlins.

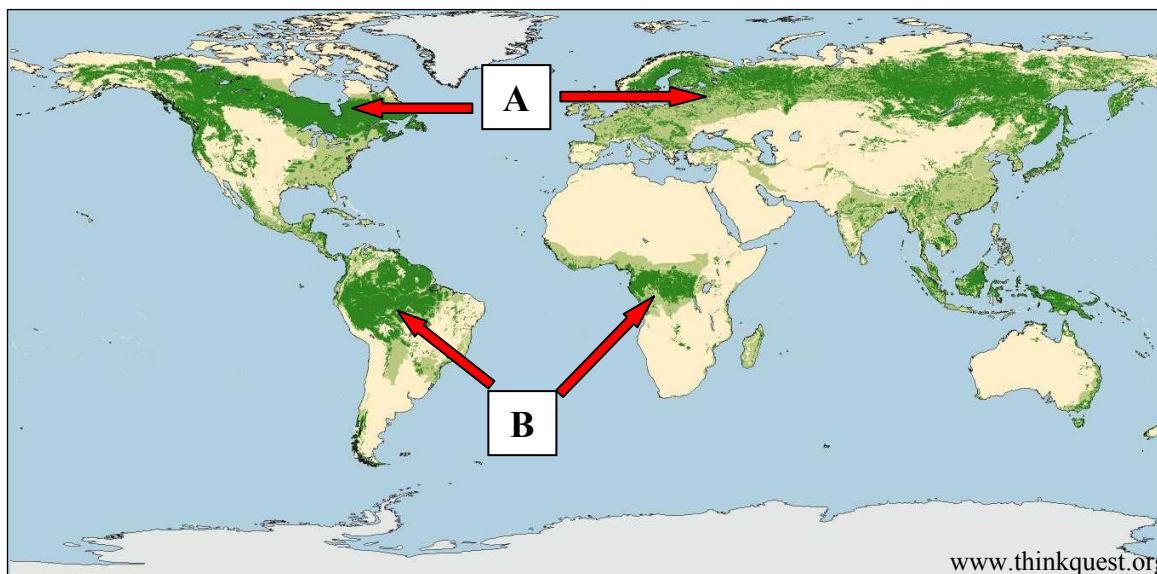
Corries, drumlins, erratic.

U-shaped valleys, moraines, cirque (corrie).

Tick (✓) the correct box.

**ANSWER EITHER 10A OR 10B**

**10A. NATURAL VEGETATION**



Examine the map above showing the distribution of the world’s forests. Circle the correct option in each of the following statements.

- (i) Boreal forests are located at A. *True / False*
- (ii) Red Tropical soils are found at B. *True / False*
- (iii) Boreal forests are deciduous forests. *True / False*

**OR**

**10B. TOURISM**

**Overseas visits to and from Ireland (millions) from 2004 to 2010**

<b>YEAR</b>	<b>2004</b>	<b>2005</b>	<b>2006</b>	<b>2007</b>	<b>2008</b>	<b>2009</b>	<b>2010</b>
Number of overseas visitors to Ireland	6.6	7.0	7.7	8.0	7.8	6.9	6.0
Number of visits abroad by Irish residents	5.4	6.1	6.8	7.7	7.9	7.0	6.6

Amended from www.cso.ie

Examine the table above showing overseas visits to and from Ireland and answer the following questions.

- (i) What year had the most overseas visitors to Ireland? \_\_\_\_\_
- (ii) In which year was the greatest number of visits abroad by Irish residents?  
\_\_\_\_\_
- (iii) What was the lowest number of visits abroad by Irish residents? \_\_\_\_\_

**ANSWER EITHER 11A OR 11B**

**11A. SOIL**

Indicate which **three** statements below are correct by ticking (✓) the correct box.

1. Podzol soils are very fertile soils.
2. Brown soils are very fertile soils.
3. When plant litter decays it forms humus.
4. Impermeable layers within soil allow water to seep through the soil.
5. Leaching is when nutrients are washed from the soil.

1, 2, 3

2, 3, 4

2, 3, 5

2, 4, 5

**OR**

**11B. SETTLEMENT**

Examine the photographs below and name each housing type, by writing the correct answer in the spaces provided.



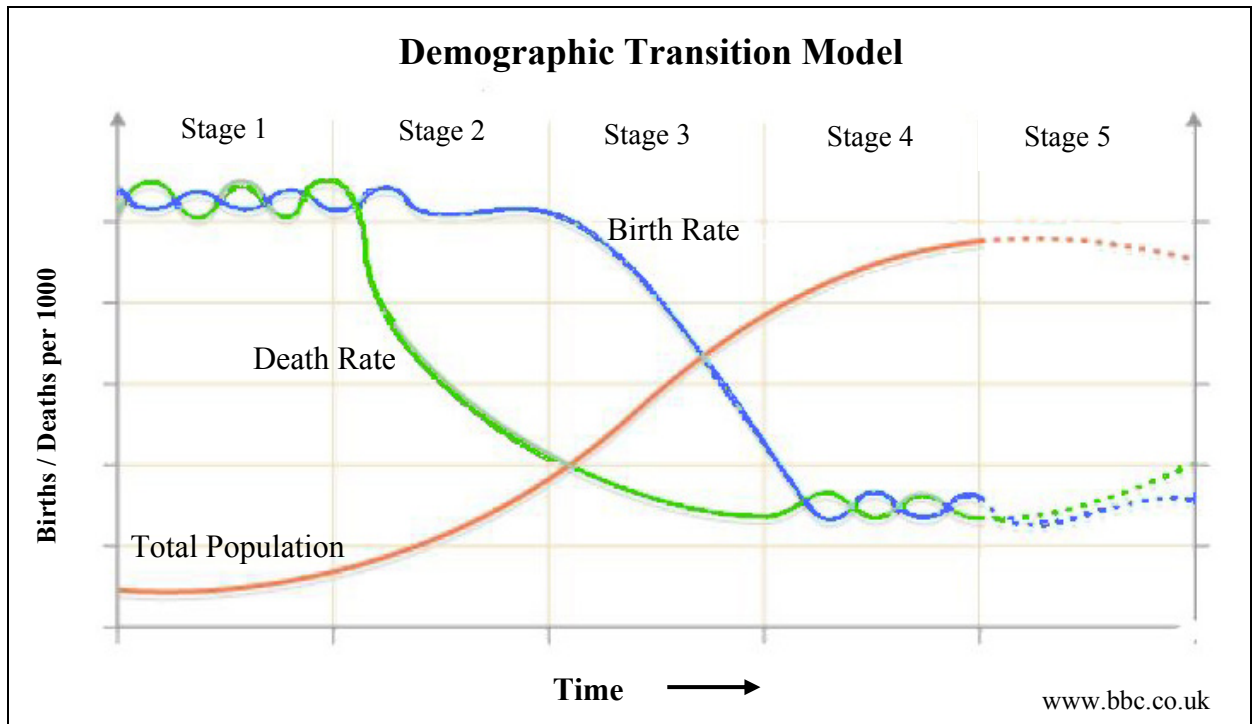
A. \_\_\_\_\_

B. \_\_\_\_\_

C. \_\_\_\_\_



## 12. POPULATION



Examine the Demographic Transition Model above.

In Stage 1, total population growth is slow because:

Death rates are low and birth rates are high.

Both birth and death rates are high.

Death rates are high and birth rates are low.

Tick (✓) the correct box.

## 13. FARMING

The box below contains inputs, processes and outputs on a farm.

Circle **three** processes on a farm.

<i>calves</i>	<i>cutting silage</i>	<i>fertilisers</i>
<i>milking</i>	<i>ploughing</i>	<i>crops</i>
<i>tractors</i>	<i>milk</i>	<i>maize</i>

#### 14. WEATHER STATISTICS

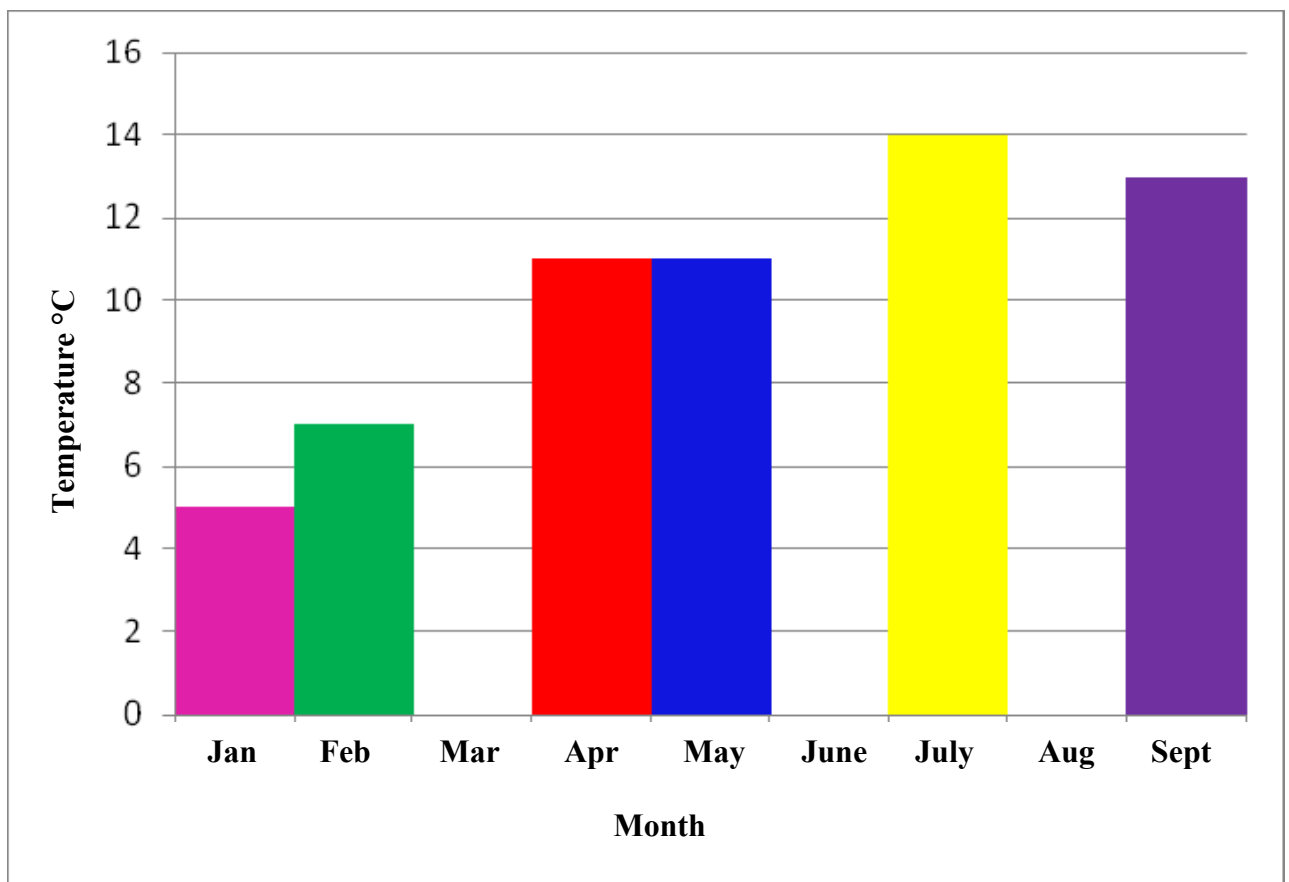
The table and bar graph below show the average monthly temperatures in Celsius for 2011 in Belmullet, Co Mayo.

Use the information in the table below to complete the graph for March, June and August.

Month	Jan	Feb	Mar	Apr	May	Jun	Jul	Aug	Sep
Temp°C	5	7	8	11	11	12	14	14	13

www.met.ie

Average monthly temperatures in 2011 for Belmullet, Co Mayo



### 15. IMPACT OF HUMAN ACTIVITY

Indicate which **three** statements below are correct by ticking (✓) the correct box.

1. Afforestation is the cutting down of forests.
2. Overcropping is the growing of the same crops in the same area every year.
3. Desertification has a positive impact on agriculture.
4. Colonialism exploited less well off countries.
5. Urban renewal is good for inner cities.

1, 3, 4

1, 4, 5

2, 3, 5

2, 4, 5

### 16. MOVEMENT OF PEOPLE

Migration can be caused by push and pull factors.

Circle the correct answer in each statement.

- (i) Civil war and unrest are a **push / pull** factor.
- (ii) Excellent job opportunities are a **push / pull** factor.
- (iii) A mild climate is a **push / pull** factor.

### 17. ORDNANCE SURVEY MAP

Examine the Ordnance Survey map supplied.

If you were travelling along the N4 from M 972 983 to M 953 995, in which direction would you be travelling?

Direction \_\_\_\_\_

**18. ORDNANCE SURVEY MAP**

In the boxes provided, match each of the letters in **Column X** with the number of its pair in **Column Y**. One match has been made for you.

Column X	
A	G 946 037
B	M 931 988
C	M 965 951
D	G 894 038

Column Y	
1	Garda station
2	Crannóg
3	Railway station
4	Church

X	Y
A	
B	
C	4
D	

**19. AERIAL PHOTOGRAPH**

Examine the aerial photograph supplied.

What is the main land-use in the left background?

Residential

Agricultural

Religious

Tick (✓) the correct box.

**20. AERIAL PHOTOGRAPH AND ORDNANCE SURVEY MAP**



This bridge is shown in the aerial photograph accompanying this paper.

Find this bridge on the Ordnance Survey map and write down its location, using a six-figure grid reference.

Location \_\_\_\_\_