

Please check the examination details below before entering your candidate information

Candidate surname

Other names

Centre Number

Candidate Number

--	--	--	--	--

--	--	--	--

Pearson Edexcel International Award in Primary

Time 1 hour

Paper
reference

JCP11/01

Computing

Year 6

Achievement Test



You do not need any other materials.

Total Marks

Instructions

- Use **black** ink or ball-point pen.
- **Fill in the boxes** at the top of this page with your name, centre number and candidate number.
- Answer **all** questions.
- Answer the questions in the spaces provided
– *there may be more space than you need.*

Information

- The total mark for this paper is 60.
- The marks for **each** question are shown in brackets
– *use this as a guide as to how much time to spend on each question.*
- You must **NOT** use a calculator.

Advice

- Read each question carefully before you start to answer it.
- Try to answer every question.
- Check your answers if you have time at the end.

Turn over ►

P72022A

©2022 Pearson Education Ltd.

B:1/1/1/1/1



Pearson

SECTION A

Answer ALL questions. Write your answers in the spaces provided.

Some questions must be answered with a cross in a box ☒. If you change your mind about an answer, put a line through the box ☒ and then mark your new answer with a cross ☒.

1 Which **one** of these is a short code made up of numbers that is used to confirm the identify of a user?

- A Fingerprint
- B Password
- C PIN
- D Username

(Total for Question 1 = 1 mark)

2 Which **one** of these describes digital etiquette?

- A The right way to act at home
- B The right way to act at school
- C The right way to act offline
- D The right way to act online

(Total for Question 2 = 1 mark)

3 Cyberbullying takes place on social media.

(a) Complete the sentence by choosing **one** word from the box.

(1)

envy fear happiness strength

Cyberbullying can cause

(b) Give **one** way someone could get help to stop cyberbullying.

(1)

.....

.....

(Total for Question 3 = 2 marks)

DO NOT WRITE IN THIS AREA

DO NOT WRITE IN THIS AREA

DO NOT WRITE IN THIS AREA



4 A webcam is a device that is used to input data.

Give **two other** input devices.

1

.....

2

.....

(Total for Question 4 = 2 marks)

5 Complete the sentence by choosing **two** words from the box.

buzzer motor printer screen speaker

A and a are devices used to output **sound**.

(Total for Question 5 = 2 marks)

6 Complete the sentence by choosing **one** word from the box.

cable telephone video wireless

Digital devices can use a wired or a network connection to transfer data.

(Total for Question 6 = 1 mark)

7 Complete the sentence by choosing **one** word from the box.

hardware networks software webpages

The world wide web (WWW) is a collection of accessed through the Internet.

(Total for Question 7 = 1 mark)



8 Which **one** of these could be used as an online diary?

- A Blog
- B Spreadsheet
- C Virtual learning environment (VLE)
- D Wiki

(Total for Question 8 = 1 mark)

9 Draw **one** straight line from **each** description to the item it is describing.

Description

Item

Allows users to find content on the Internet using keywords

Bookmark

A shortcut for quick access to a web page

Forum

Search engine

Work space

(Total for Question 9 = 2 marks)

10 Explain **one** way in which playing computer games can damage someone's health.

.....

.....

.....

.....

(Total for Question 10 = 2 marks)



11 Ezra has created an image and has uploaded it to her website.

Complete the sentence by choosing **one** word from the box.

copyright reliability saving streaming

The image is protected by

(Total for Question 11 = 1 mark)

12 Adela is holding a book sale.

She prints posters to advertise the sale.

She records the number of each book sold and how much money she has taken.

Complete the table by adding the **most** appropriate type of software for **each** task.

Task	Software type
Produce posters	
Record sales	

(Total for Question 12 = 2 marks)

13 Joshua is spending the day at the beach.

He uses his smartphone to take a photo and email it to his friend.

Complete the table by adding a tick (✓) next to the network type he would use to do this.

Network type	Tick (✓)
Mobile phone network	
Wired phone network	
Cable TV network	

(Total for Question 13 = 1 mark)

14 Monica wants to watch a movie on her smartphone.

Explain **one** reason why she might choose to stream the movie rather than download it.

(Total for Question 14 = 2 marks)

15 Draw **one** straight line from **each** description to the activity it is describing.

Description

Activity

Tricking people into giving away personal information

Pharming

Phishing

Watching someone enter personal information

Shoulder surfing

Social interaction

(Total for Question 15 = 2 marks)

16 Which **one** of these is a reason why computers are connected in a network?

- A** To reduce the amount of paper used
- B** To save electricity
- C** To save office space
- D** To share a printer

(Total for Question 16 = 1 mark)



17 Which **one** of these describes the purpose of a variable in a program?

- A To carry out a calculation
- B To find errors
- C To hold data
- D To repeat an action

(Total for Question 17 = 1 mark)

18 A number of sweets needs to be shared between ten people.

Which **one** of these calculates how many sweets each person will get?

- A = number of sweets * 10
- B = number of sweets / 10
- C = number of sweets + 10
- D = number of sweets - 10

(Total for Question 18 = 1 mark)

19 Draw **one** straight line from **each** data type to the correct value.

Data type	Value
Real	A
Char	25
	11.2
	TRUE

(Total for Question 19 = 2 marks)



20 Which **one** of these is a term for breaking a problem down into smaller sub-problems?

- A Debug
- B Decompose
- C Interpret
- D Write

(Total for Question 20 = 1 mark)

21 Complete the sentence by choosing **one** word from the box.

algorithm event integer operator

A flowchart is a way of describing an

(Total for Question 21 = 1 mark)

22 Look at **Figure 1**.

It describes a process.

Check the time
if the time is before 18:00 then output **It is day time**
otherwise output **It is night time**

Figure 1

Give the output when the current time is 22:00.

(Total for Question 22 = 1 mark)



DO NOT WRITE IN THIS AREA

DO NOT WRITE IN THIS AREA

DO NOT WRITE IN THIS AREA

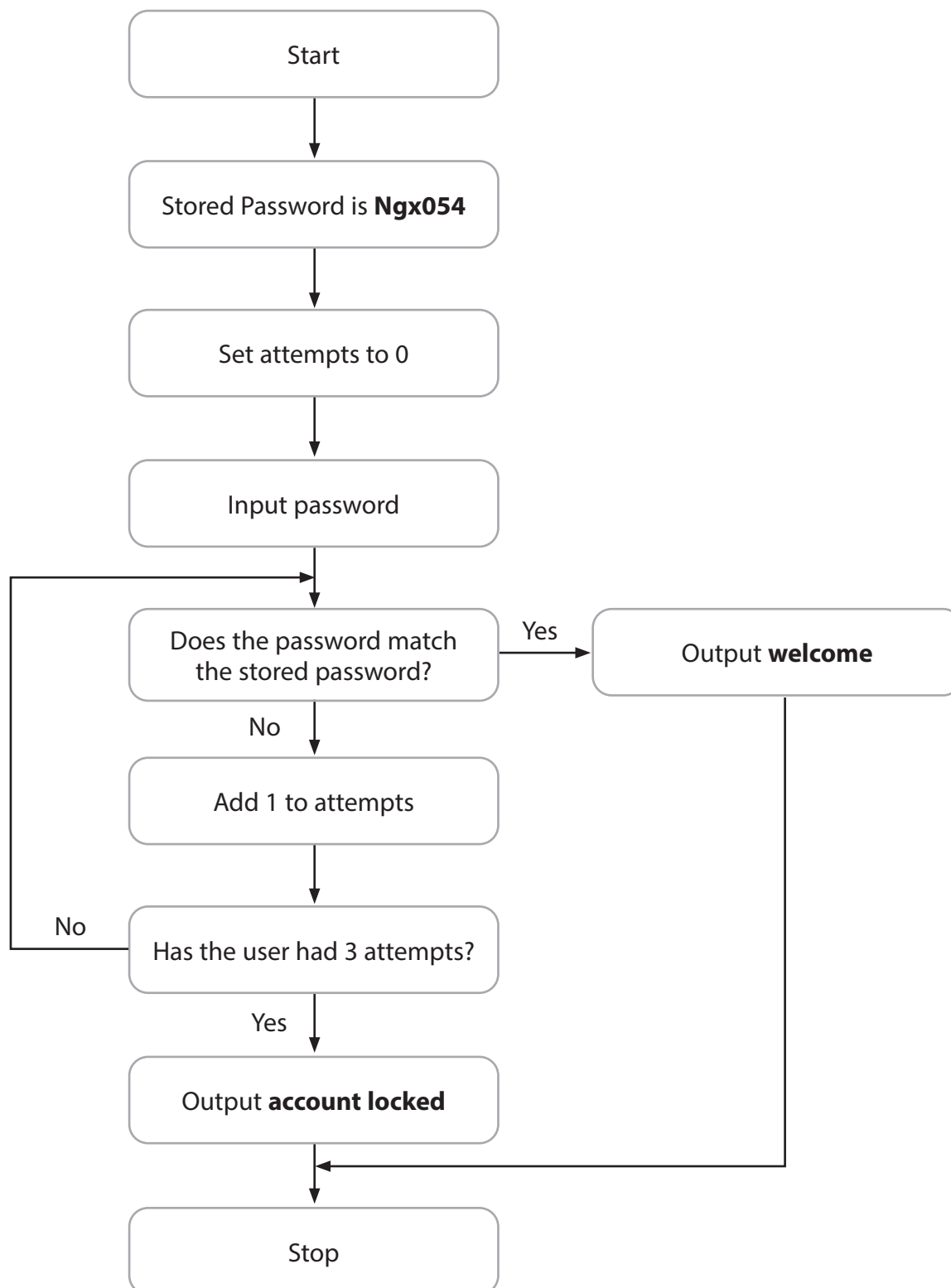
BLANK PAGE
QUESTION 23 BEGINS ON THE NEXT PAGE.



23 Look at **Figure 2**.

It shows the first draft of a flowchart that checks whether a password is correct.

A user gets three attempts to input the correct password before their account is locked.

**Figure 2**

(a) Identify **one** variable used in the flowchart.

(1)

(b) The flowchart contains an error.

The start of the loop is in the wrong place.

Describe the effect of this error.

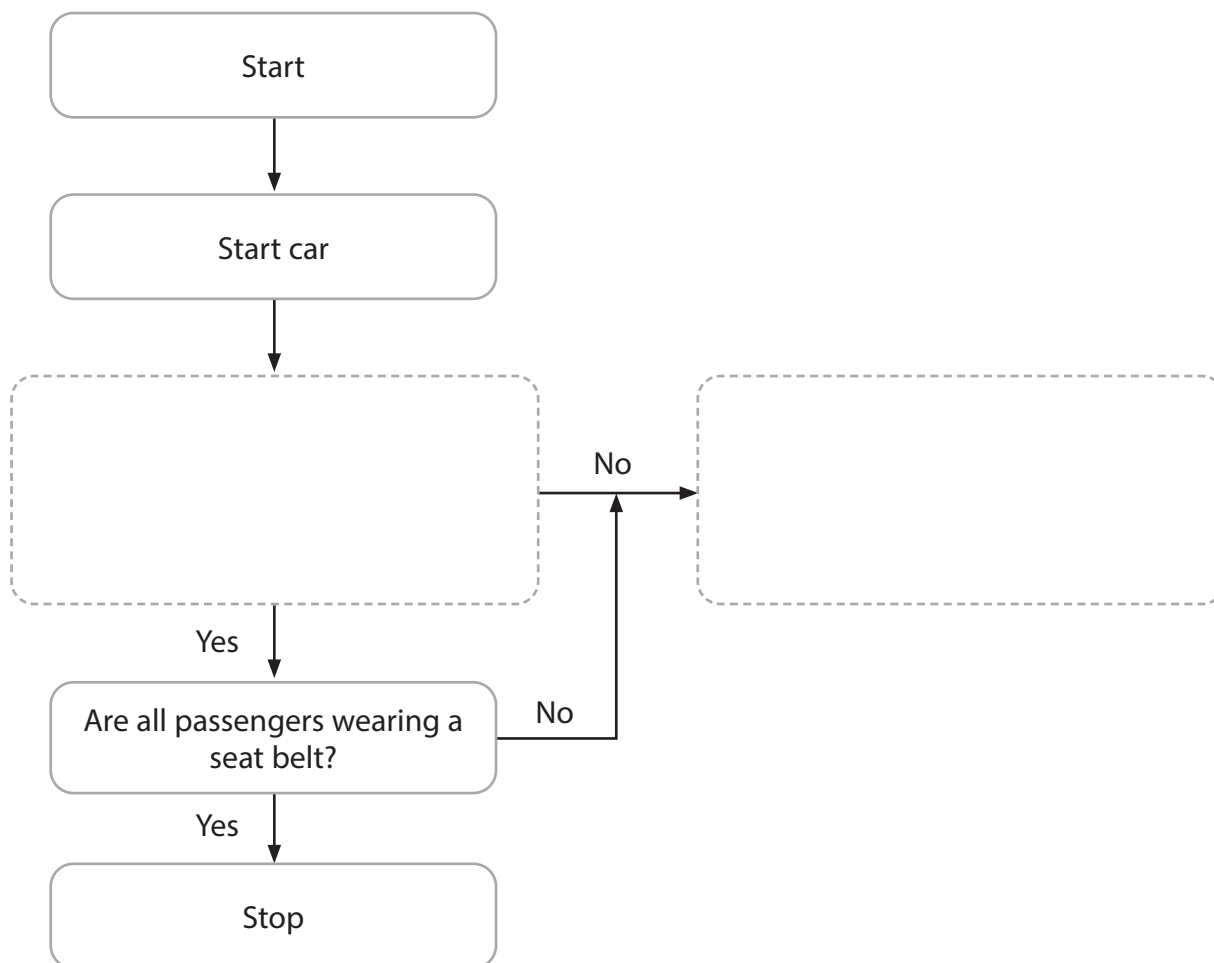
(2)

(Total for Question 23 = 3 marks)



24 This flowchart shows what happens when a car is started.

An alarm sounds if a door is not shut or if any of the passengers is not wearing a seat belt.



(a) Complete the flowchart by adding text to the empty boxes.

(2)

(b) The structural components sequence and input are used in the flowchart.

Give the name of **one other** structural component used in the flowchart.

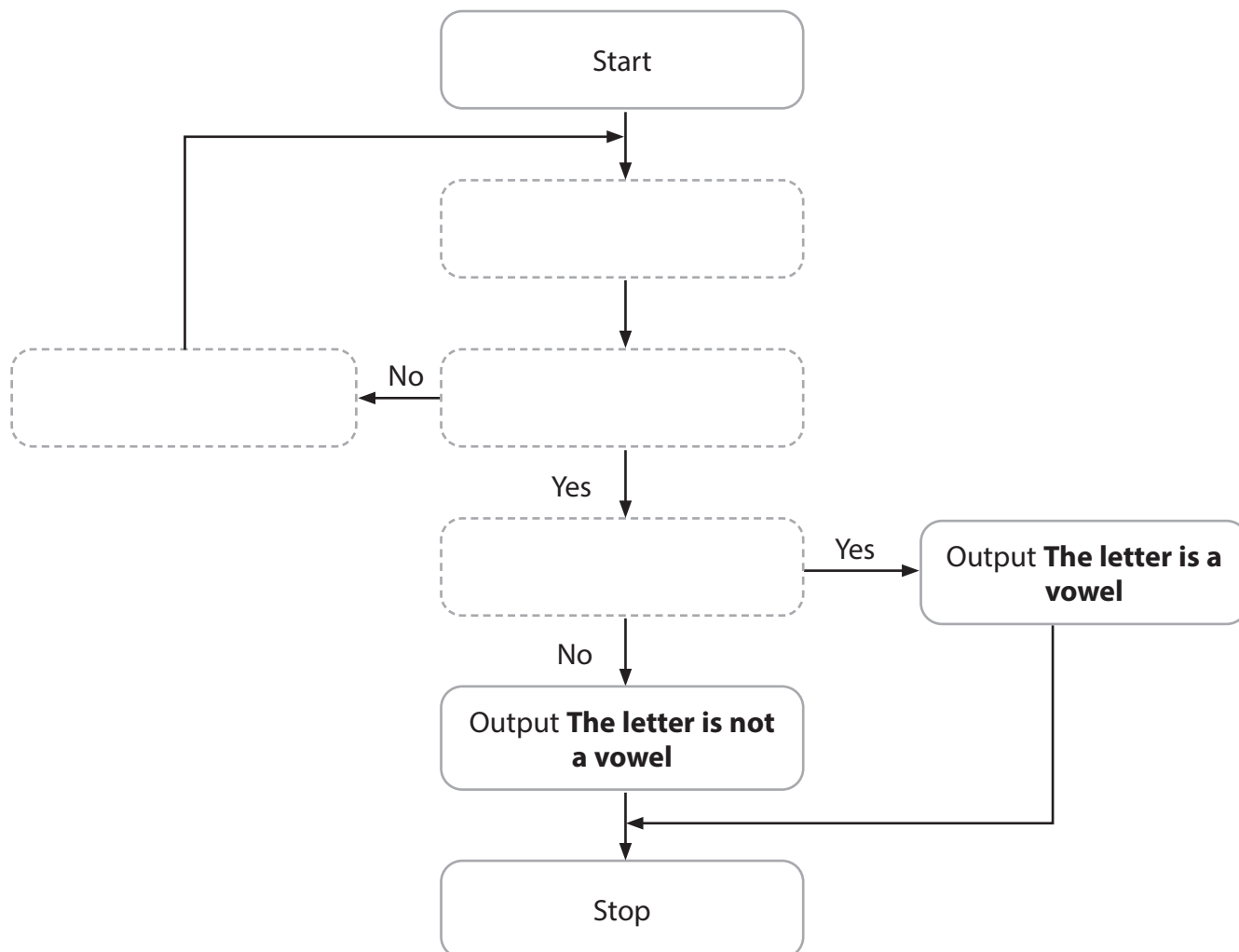
(1)

(Total for Question 24 = 3 marks)



25 This flowchart checks whether a letter is a vowel.

- The user is asked to input a letter.
- If the input is not a letter, the flowchart outputs an error message.
- Once the user has input a letter, the flowchart outputs whether it is a vowel (a, e, i, o, u) or is not a vowel.



Here are the missing steps for the program. They are not in the correct order.

A	Is the input a vowel (a, e, i, o or u)?
B	Get the input
C	Output You must input a letter. Try again.
D	Is the input a letter?

Complete the flowchart by adding the letter of each step in the correct flowchart box.

(Total for Question 25 = 3 marks)

TOTAL FOR SECTION A = 40 MARKS



P 7 2 0 2 2 A 0 1 3 2 4

SECTION B

Answer ALL questions. Write your answers in the spaces provided.

Some questions must be answered with a cross in a box ☒. If you change your mind about an answer, put a line through the box ☒ and then mark your new answer with a cross ☒.

26 Which **one** of these is a tool used to remove part of an image?

- A Caption
- B Crop
- C Format
- D Scissor

(Total for Question 26 = 1 mark)

27 Explain **one positive** environmental impact of the use of technology.

.....

.....

.....

.....

(Total for Question 27 = 2 marks)

DO NOT WRITE IN THIS AREA

DO NOT WRITE IN THIS AREA

DO NOT WRITE IN THIS AREA



28 Look at **Figure 3**.

It shows two versions of a document.

A

It was great to see you today as we have not seen each other for ages. I thought the movie we saw was very good. Did you? We should not wait as long to see each other next time.

B

It was great to see you today as we have not seen each other for ages. I thought the movie we saw was very good. Did you? We should not wait as long to see each other next time.

Figure 3

State **two** features of word processing software that have been used to turn version A into version B.

1

2

(Total for Question 28 = 2 marks)

29 Look at **Figure 4**.

It shows two versions of a document.

A

Today will be a sunny day. Take your sunscreen with you so that you do not burn.

B

Today will be a sunny day. Take your sunscreen with you so that you do not burn.

Figure 4

Which **one** of these layout features has been used to turn version A into version B?

- A** Horizontal left alignment
- B** Horizontal right alignment
- C** Vertical top alignment
- D** Vertical centre alignment

(Total for Question 29 = 1 mark)



30 Complete the sentence by choosing **one** word from the box.

colouring drawing shading tabs

The background colour of a text box could be changed from white to red using the feature.

(Total for Question 30 = 1 mark)

31 Look at **Figure 5**.

It shows an extract from a student attendance database.

Student ID	First name	Last name	Attendance %	Telephone number
11_1	Nirved	de Silva	100.0	(0191) 498 0002
11_2	Davina	Cooper	95.8	(0191) 498 0997
11_3	Mobin	Islam	77.6	(0191) 498 0986
11_4	Monica	Weidmann	100.0	(0191) 498 1358

Figure 5

(a) Which **one** of these is where records are stored in a database?

(1)

- A Cell
- B Column
- C Field
- D Table

(b) Which **one** of these is a field used in **Figure 5**?

(1)

- A 95.8
- B (0191) 498 0002
- C Attendance %
- D Davina



(c) Which **one** of these is the data type used for Student ID?

(1)

- A** Char
- B** Number
- C** Integer
- D** Text

(d) Complete the query to find the students who have never missed a lesson.

(2)

..... =

(Total for Question 31 = 5 marks)



32 Look at **Figure 6**.

It is part of a spreadsheet showing the marks students scored in tests.

	A	B	C	D
1		Scarlett	Joshua	Luciana
2	English test	10	8	7
3	Science test	7	6	8
4	Maths test	9	10	4
5	Total mark	26	24	19

Figure 6

(a) An example of a cell reference is E2.

Complete the table by adding a tick (✓) to show the part of the cell reference that identifies the row and the part that identifies the column.

(1)

Cell part	Row (✓)	Column (✓)
E		
2		



(b) Which **one** of these is used to calculate Luciana's total mark?

(1)

- A** =SUM(B2:D4)
- B** =SUM(B4:D4)
- C** =SUM(D2:D4)
- D** =SUM(D4:D5)

(c) Give **one** reason why the teacher should save the spreadsheet with a sensible filename.

(1)

(d) The teacher must produce a printed report for the headteacher.

She wants to include part of the spreadsheet in the report.

State the type of software she should use to create the report.

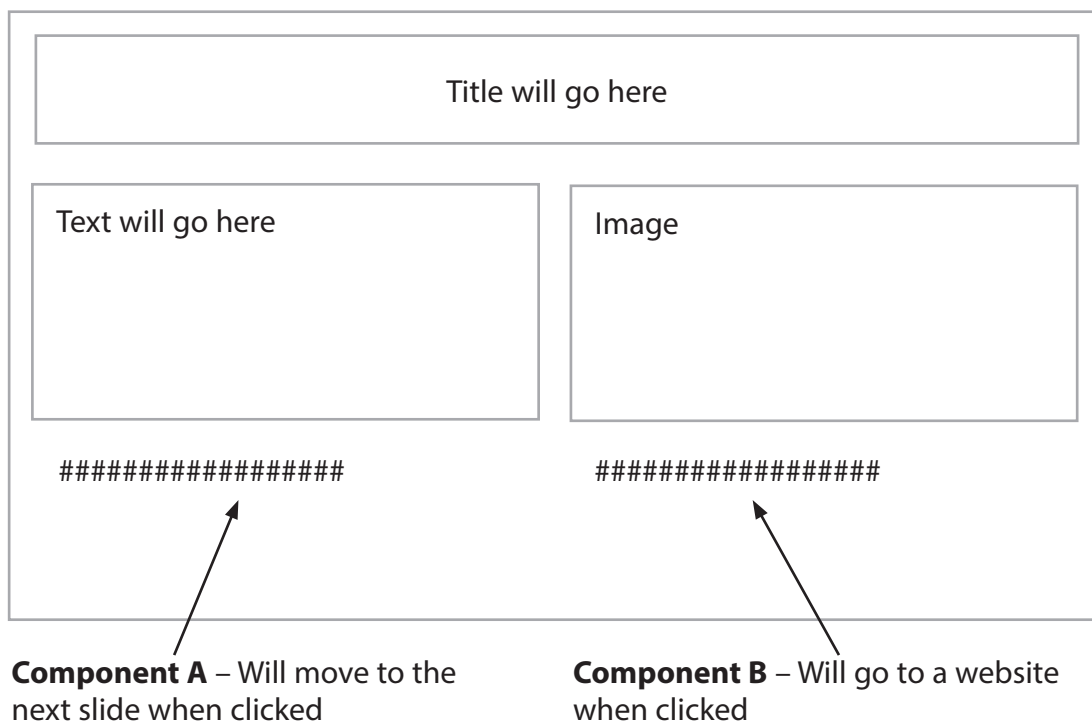
(1)

(Total for Question 32 = 4 marks)



33 Look at **Figure 7**.

It shows the design for a slide.

**Figure 7**

- (a) Components A and B use hyperlinks.

Complete the table by adding a tick (✓) to show whether the component is an internal or external hyperlink.

Component	Internal hyperlink (✓)	External hyperlink (✓)
A		
B		

(1)

- (b) One use for a button on a slide is to provide navigation using a hyperlink.

Give **one other** use for a button.

(1)

(Total for Question 33 = 2 marks)



DO NOT WRITE IN THIS AREA

DO NOT WRITE IN THIS AREA

DO NOT WRITE IN THIS AREA

34 Describe **one** difference between a transition effect and an animation effect in a presentation.

.....

.....

.....

.....

(Total for Question 34 = 2 marks)

TOTAL FOR SECTION B = 20 MARKS

TOTAL FOR PAPER = 60 MARKS



DO NOT WRITE IN THIS AREA

DO NOT WRITE IN THIS AREA

DO NOT WRITE IN THIS AREA

BLANK PAGE



DO NOT WRITE IN THIS AREA

DO NOT WRITE IN THIS AREA

DO NOT WRITE IN THIS AREA

BLANK PAGE



DO NOT WRITE IN THIS AREA

DO NOT WRITE IN THIS AREA

DO NOT WRITE IN THIS AREA

BLANK PAGE

