

Please check the examination details below before entering your candidate information

Candidate surname

Other names

Centre Number

Candidate Number

--	--	--	--	--

--	--	--	--

Pearson Edexcel International Award in Primary

Time 1 hour

Paper
reference

JCP11/01

Computing

Year 6

Achievement Test



You do not need any other materials.

Total Marks

Instructions

- Use **black** ink or ball-point pen.
- **Fill in the boxes** at the top of this page with your name, centre number and candidate number.
- Answer **all** questions.
- Answer the questions in the spaces provided
– *there may be more space than you need.*

Information

- The total mark for this paper is 60.
- The marks for **each** question are shown in brackets
– *use this as a guide as to how much time to spend on each question.*
- You must **NOT** use a calculator.

Advice

- Read each question carefully before you start to answer it.
- Try to answer every question.
- Check your answers if you have time at the end.

Turn over ►

P66186A

©2022 Pearson Education Ltd.

Q:1/1/1/1/




Pearson

SECTION A

Answer ALL questions. Write your answers in the spaces provided.

Some questions must be answered with a cross in a box ☒. If you change your mind about an answer, put a line through the box ☒ and then mark your new answer with a cross ☒.

1 Which **one** of these could be used to take photographs in a park?

- A Desktop PC
- B Media player
- C Microphone
- D Smartphone

(Total for Question 1 = 1 mark)

2 Draw **one** straight line from **each** software application to a feature of that application.

Software application

Database

Spreadsheet

Graphics

Feature

Caption

Table

Cell

(Total for Question 2 = 3 marks)

3 Which **one** of these uses radio waves to send and receive calls?

- A Cable phone network
- B Keyboard phone network
- C Mobile phone network
- D Wired phone network

(Total for Question 3 = 1 mark)



4 Describe what is meant by the term **social engineering**.

.....

.....

.....

.....

(Total for Question 4 = 2 marks)

5 A username is one method used to secure data and personal information online.

Give **one other** method that can be used.

.....

(Total for Question 5 = 1 mark)

6 Which **one** of these is an example of inappropriate digital etiquette?

- A Playing a game on your smartphone during a lesson
- B Reading an email while completing homework
- C Shouting to your friend out of a window
- D Using email to invite a friend to your party

(Total for Question 6 = 1 mark)

7 Which **one** of these is an action you should take if you receive an offensive text message about your friend?

- A Forward the message to the rest of your friends
- B Reply to the message
- C Report it to a teacher
- D Try to get revenge on the bully

(Total for Question 7 = 1 mark)



8 Which **one** of these can be a way of avoiding wrist strain when using a computer?

- A Do stretch exercises regularly
- B Go to the gym more often
- C Look away from the screen regularly
- D Sit in the same position all of the time

(Total for Question 8 = 1 mark)

9 Describe **one** way in which access to the internet enables people to exercise.

.....

.....

.....

.....

(Total for Question 9 = 2 marks)

10 Give **one** benefit of online entertainment services.

.....

.....

(Total for Question 10 = 1 mark)

11 State **one** use of a virtual learning environment (VLE).

.....

.....

(Total for Question 11 = 1 mark)

12 Which **one** of these is a user-generated reference site?

- A Bookmark
- B Browser
- C Search engine
- D Wiki

(Total for Question 12 = 1 mark)



13 Which **one** of these is a benefit of social networking?

- A Sharing information is difficult
- B Sharing photographs you might regret
- C Spending too much time chatting
- D Staying in contact with your friends easily

(Total for Question 13 = 1 mark)

14 You want to find information about the habitat of Bengal tigers.

Which **one** of these searches would return the most useful information?

- A Bengal tigers facts
- B Bengal tigers habitat
- C Tigers in the world
- D Where tigers live

(Total for Question 14 = 1 mark)

15 Complete the sentence by choosing **one** word from the box.

bias copyright downloading etiquette

Digital information and media are protected by

(Total for Question 15 = 1 mark)

16 Complete the sentence by choosing **one** word from the box.

accurate inaccurate recent reliable

The statement 'everyone in the world has brown hair' is
information.

(Total for Question 16 = 1 mark)

17 Complete the table by adding a tick (✓) next to **two** features of an online shopping site.

Feature	Tick (✓)
Media player	
Product catalogue	
Movie streaming	
Secure payment	
Distance sensor	

(Total for Question 17 = 2 marks)

18 Complete the sentence by choosing **one** word from the box.

addition

algorithm

application

arithmetic

An is a set of instructions to complete a task.

(Total for Question 18 = 1 mark)

19 **Figure 1** shows two versions of an algorithm.

A	B
Get inputs	Get inputs
Calculate answer	<i>Input first number</i>
Display outputs	<i>Input second number</i>
	Calculate answer
	<i>answer = first number × second number</i>
	Display outputs
	<i>Display first number</i>
	<i>Display second number</i>
	<i>Display answer</i>

Figure 1

Complete the sentence by choosing **one** word from the box.

abstraction

decomposition

selection

sequence

The process used to change A into B is

(Total for Question 19 = 1 mark)



20 Brian has a program that helps him keep track of the stock in his shop.

The program asks him to input:

- the name of the product
- the price of the product
- the number in stock
- whether the stock is a food item or not.

Complete the table by giving the data type that should be used for **each** example.

	Input	Example	Data type	
(a)	Product name	Bread		(1)
(b)	Product price	1.25		(1)
(c)	Number in stock	10		(1)
(d)	Food item?	True		(1)

(Total for Question 20 = 4 marks)



21 Look at **Figure 2**.

It shows a flowchart to count and display the number of cubes that are picked out of a bag.

It contains an error.

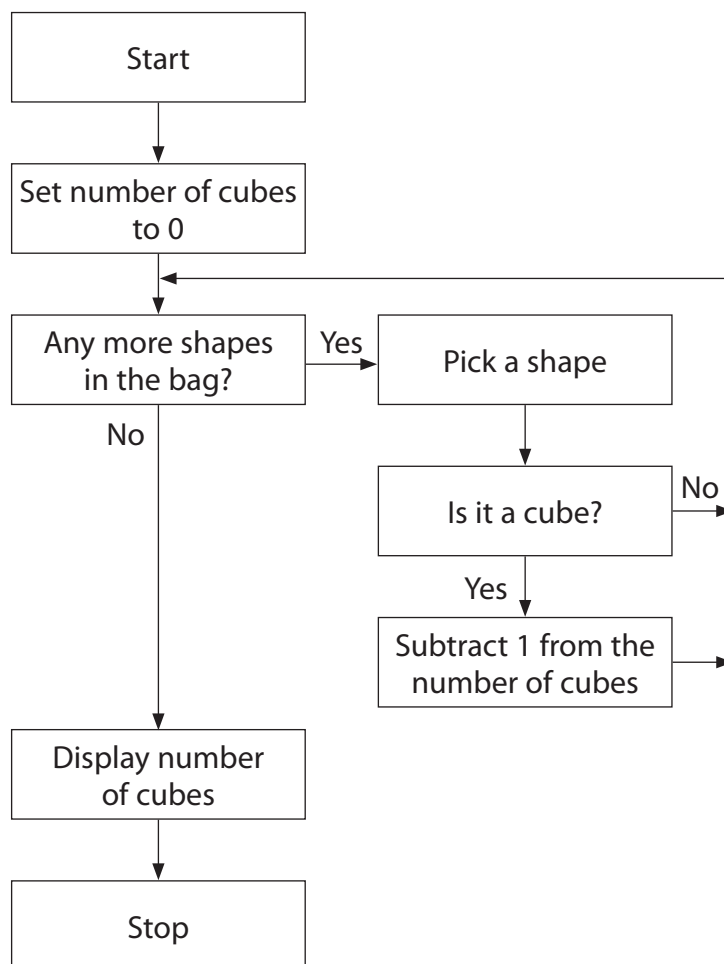


Figure 2

(a) Circle the box that has the error. (1)

(b) State how the error could be corrected. (1)

(c) Identify **one** variable used in the flowchart. (1)



(d) Repetition and selection are being used in the flowchart.

Explain why both are needed in this flowchart.

(2)

.....

.....

.....

.....

(Total for Question 21 = 5 marks)

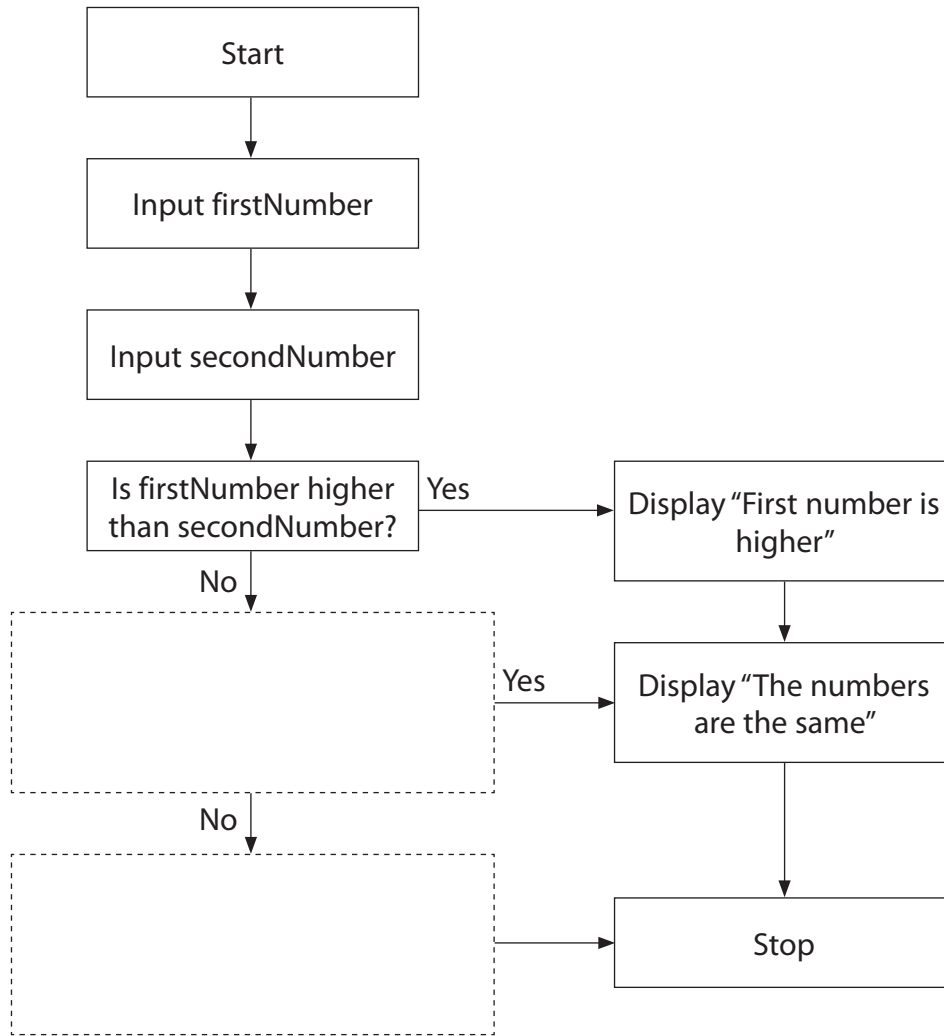
DO NOT WRITE IN THIS AREA

DO NOT WRITE IN THIS AREA

DO NOT WRITE IN THIS AREA



22 This flowchart determines whether one number is higher, lower or the same as another number.



(a) Complete the flowchart.

(2)

(b) Circle **one** output shown on the flowchart.

(1)

(c) Identify **one** variable used in the flowchart.

(1)

(Total for Question 22 = 4 marks)



DO NOT WRITE IN THIS AREA

23 A program is needed to check whether the user has guessed a secret number.

If the number entered by the user matches the secret number, then the word "Correct" must be displayed.

If the number entered by the user does not match the secret number, then the word "Incorrect" must be displayed.

Create a flowchart for this program.



(Total for Question 23 = 3 marks)

TOTAL FOR SECTION A = 40 MARKS



P 6 6 1 8 6 A 0 1 1 2 0

SECTION B

Answer ALL questions. Write your answers in the spaces provided.

Some questions must be answered with a cross in a box ☒. If you change your mind about an answer, put a line through the box ☒ and then mark your new answer with a cross ☒.

- 24 Mark wants to keep the addresses and dates of birth of his friends so that he can sort and search for information easily. He also wants to write letters to his friends.

Complete the table by adding a tick (✓) next to the **two** most appropriate software applications he would use.

Software application	Tick (✓)
Database management	
Graphics	
Desktop publishing	
Word processing	

(Total for Question 24 = 2 marks)

- 25 Which **one** of these is a positive environmental impact of technology?

- A Lots of digital devices get thrown away
- B Paper is no longer used
- C People buy new devices rather than repairing the ones they have
- D Sensors can control when lights are switched on and off

(Total for Question 25 = 1 mark)

- 26 Which **one** of these is a reason for using an organised folder structure?

- A Makes it easier to create a new file
- B Makes it easier to know what the file is about
- C Makes it easier to locate files
- D Makes it easier to remember a password for a file

(Total for Question 26 = 1 mark)



DO NOT WRITE IN THIS AREA

DO NOT WRITE IN THIS AREA

DO NOT WRITE IN THIS AREA

27 Look at **Figure 3**.

It shows two versions of an image made up of different types of shape.

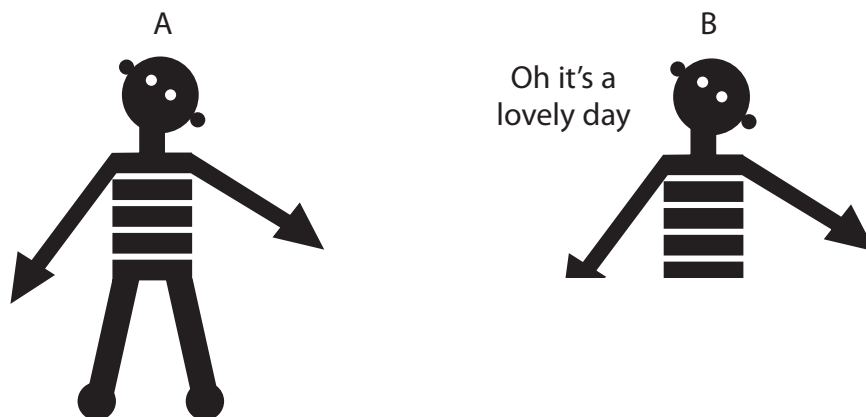


Figure 3

(a) State the number of **different** types of shape that have been used to create image A.

(1)

(b) Describe how image A has been edited to produce image B.

(2)

(Total for Question 27 = 3 marks)




28 Look at **Figure 4**.

It shows a slide.

Our Staff

- Mr Graham
- Teaches chemistry
- Has been a teacher at the school for seven years



Next staff member

Figure 4

Complete the table by adding a tick (✓) next to the names of **two** components that have been used **on the slide**.

Component	Tick (✓)
Button	
Cell	
Drawing	
Gridlines	
Image	
Table	

(Total for Question 28 = 2 marks)



29 Look at **Figure 5**.

It shows a formatted table.

	Days				
	Monday	Tuesday	Wednesday	Thursday	Friday
Classroom	R21	C35	R29	R30	C34
Teacher	Mr Graham	Miss Finkle	Mr Ahmed	Mrs Caw	Dr Antar

Figure 5

The merge feature has been used to format part of the table.

Explain why the merge feature has been used.

.....

.....

.....

.....

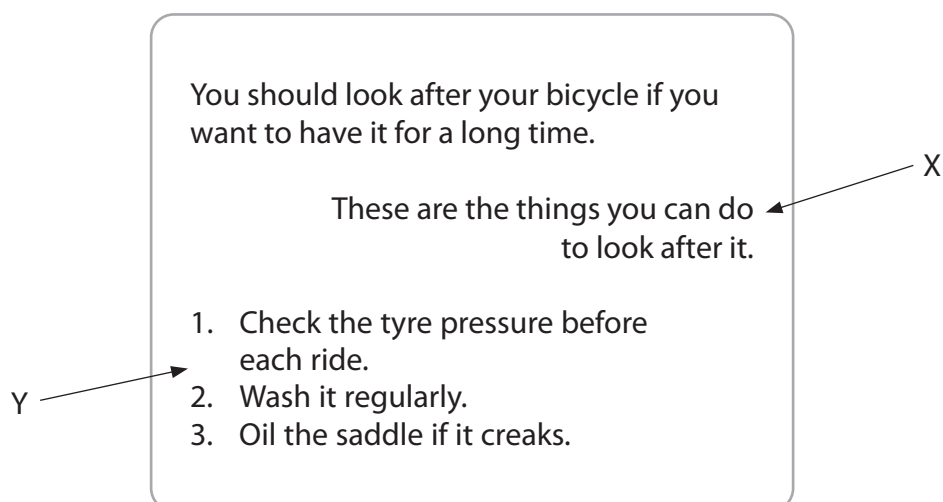
(Total for Question 29 = 2 marks)



P 6 6 1 8 6 A 0 1 5 2 0

30 Look at **Figure 6**.

It shows some formatted text.

**Figure 6**

(a) Which **one** of these formatting features has been used at X?

(1)

- A** Align left
- B** Align right
- C** Centre alignment
- D** Justify

(b) Which **one** of these formatting features has been used at Y?

(1)

- A** Bullets
- B** Sub-bullets
- C** Numbering
- D** Sub-numbering

(Total for Question 30 = 2 marks)



DO NOT WRITE IN THIS AREA

DO NOT WRITE IN THIS AREA

DO NOT WRITE IN THIS AREA

31 Look at **Figure 7**.

It shows part of a database.

Artist ID	Last name	Email address	Date of birth	Telephone
10	Andreasson	Andre@ffm.com	19/08/2000	+44 33123456
11	Atteberry	Atteberry@coldpost.com	21/01/1972	+44 11123456
12	Coumans	Thecouman@ffr.co.uk	13/05/1995	+44 33122236
13	Robinson	Robby@coldpost.com	01/01/2001	+44 33133356
14	Fuentes	Fue@coldpost.com	31/12/1963	+44 16123456
15	Magyar	GMagyar@ffr.co.uk	14/02/1980	+44 33143456

Figure 7

- (a) Complete the sentence to give the number of fields and records in **Figure 7**. (2)

There are fields and records.

- (b) Which **one** of these is the data type used for **Telephone**? (1)

- A** Currency
- B** Date
- C** Number
- D** Text

- (c) Complete the query to find the artist whose date of birth is 21st January 1972. (1)

Date of birth =

(Total for Question 31 = 4 marks)



P 6 6 1 8 6 A 0 1 7 2 0

32 Look at **Figure 8**.

It is part of a spreadsheet showing costs for a school trip.

	A	B
1		Cost Per Person £
2	Bus	£2.10
3	Lunch	£4.00
4	Cinema ticket	£7.50
5		
6	Number of people	23
7		Totals £
8	Cost of bus	£48.30
9	Cost of lunch	£92.00
10	Cost of cinema tickets	£172.50
11	Total cost	£312.80

Figure 8

(a) Which **one** of these is used to calculate the value in B11?

(1)

- A** =SUM (B8 : B11)
- B** =SUM (B8 : B10)
- C** =SUM (B8+B9+B10+B11)
- D** =SUM (B2+B3+B4)

(b) Give the formula that would be used to calculate the value in B10.

(1)

(Total for Question 32 = 2 marks)



DO NOT WRITE IN THIS AREA

DO NOT WRITE IN THIS AREA

DO NOT WRITE IN THIS AREA

33 Complete the sentence by choosing **one** word from the box.

columns formulae operators rows

Letters identify the in a spreadsheet.

(Total for Question 33 = 1 mark)

TOTAL FOR SECTION B = 20 MARKS
TOTAL FOR PAPER = 60 MARKS



DO NOT WRITE IN THIS AREA

DO NOT WRITE IN THIS AREA

DO NOT WRITE IN THIS AREA

BLANK PAGE

