

Please check the examination details below before entering your candidate information

Candidate surname

Other names

Centre Number

Candidate Number

--	--	--	--	--

--	--	--	--

Pearson Edexcel International Award in Primary

Time 1 hour

Paper
reference

JCP11/01

Computing

Year 6

Achievement Test

You do not need any other materials.

Total Marks

Instructions

- Use **black** ink or ball-point pen.
- **Fill in the boxes** at the top of this page with your name, centre number and candidate number.
- Answer **all** questions.
- Answer the questions in the spaces provided
– *there may be more space than you need.*

Information

- The total mark for this paper is 60.
- The marks for **each** question are shown in brackets
– *use this as a guide as to how much time to spend on each question.*
- You must **NOT** use a calculator.

Advice

- Read each question carefully before you start to answer it.
- Try to answer every question.
- Check your answers if you have time at the end.

Turn over ►

P69291A

©2021 Pearson Education Ltd.

E:1/1/1



Pearson

SECTION A

Answer ALL questions. Write your answers in the spaces provided.

Some questions must be answered with a cross in a box ☒. If you change your mind about an answer, put a line through the box ☒ and then mark your new answer with a cross ☒.

1 Which **one** of these would be used to input sound into a digital device?

- A Keyboard
- B Microphone
- C Mouse
- D Touch screen

(Total for Question 1 = 1 mark)

2 Complete the sentence.

Information is passed from a computer to a human using an
..... device.

(Total for Question 2 = 1 mark)

3 Which **one** of these software applications would you use to create a text document?

- A Database
- B Graphics
- C Spreadsheet
- D Word processing

(Total for Question 3 = 1 mark)

4 Complete the sentence by choosing **one** word from the box.

pharming cyberbullying phishing

An email that looks like it is from a real company asking the user for private
information is an example of

(Total for Question 4 = 1 mark)

DO NOT WRITE IN THIS AREA

DO NOT WRITE IN THIS AREA

DO NOT WRITE IN THIS AREA



5 A photographer copyrights an image.

Which **one** of these rights does the photographer have?

- A How the image can be used
- B The file formats that can be used to save the image
- C The output devices that can be used to view the image
- D The software that can be used to edit the image

(Total for Question 5 = 1 mark)

6 Complete the sentence by choosing **one** word from the box.

selecting transferring combining

Digital devices communicate with each other by

..... data.

(Total for Question 6 = 1 mark)

7 Complete the sentence.

The World Wide Web (WWW) is stored on computers connected to

the

(Total for Question 7 = 1 mark)

8 Bianca wants to watch a movie on holiday.

Explain **one** advantage to Bianca of downloading the movie onto her laptop before she goes.

.....

.....

.....

.....

(Total for Question 8 = 2 marks)



9 Which **one** of these allows you to stream a movie?

- A Joystick
- B Media player
- C Social bookmarking
- D Speaker

(Total for Question 9 = 1 mark)

10 One benefit of using an online entertainment service is that it is always available.

Give **one other** benefit of using an online entertainment service.

.....

.....

(Total for Question 10 = 1 mark)

11 Which **one** of these describes a computer network?

- A Two or more computers that are linked to share services
- B Two or more computers that are the same type
- C Two or more computers that have word processing software
- D Two or more computers that have the same type of keyboard

(Total for Question 11 = 1 mark)

12 Which **one** of these would be the best for an online diary?

- A Blog
- B Forum
- C VLE
- D Wiki

(Total for Question 12 = 1 mark)



13 Draw **one** straight line from **each** method of controlling access to its description.

Method**Description**

Password

• Used to uniquely identify a user

Username

• A short numerical code used to confirm the identity of a user

PIN

• A set of characters used to confirm the identity of a user

(Total for Question 13 = 3 marks)

14 Information based on personal opinion may show bias.

Which **one** of these statements shows bias?

- A The long jump is more difficult than the high jump
- B There were ten events in the sports day
- C Three sports events were cancelled because of rain
- D Today was three degrees colder than yesterday

(Total for Question 14 = 1 mark)

15 You want to find information about African elephants.

Describe how you would use a search engine to do this.

.....

.....

.....

.....

(Total for Question 15 = 2 marks)



16 Complete the sentence by choosing **one** word from the box.

goals outputs instructions

An algorithm is a set of to complete a task.

(Total for Question 16 = 1 mark)

17 The components of an algorithm are input, process, output.

Draw **one** straight line from **each** component to the relevant action.

Component

Action

Input

Multiply the two numbers

Process

Display the results on the screen

Output

Receive two numbers from the keyboard

(Total for Question 17 = 3 marks)

18 Multiply is the name of one arithmetic operator.

Give the name of **two other** arithmetic operators.

1

2

(Total for Question 18 = 2 marks)



19 Complete the sentence by choosing **one** word from the box.

interpreted

decomposed

selected

A problem can be by breaking it down into smaller sub-problems.

(Total for Question 19 = 1 mark)

20 Which **one** of these is a value that can change in a program.

- A Buzzer
- B Cell
- C Flowchart
- D Variable

(Total for Question 20 = 1 mark)

21 A program asks a user to input:

- their name
- the number of sisters they have
- whether they have a pet.

Complete the table by giving the data type that should be used for each input.

	Input	Data type	
(a)	Jenny		(1)
(b)	3		(1)
(c)	True		(1)

(Total for Question 21 = 3 marks)



22 Look at **Figure 1**.

It shows a flowchart.

Some of the boxes are labelled.

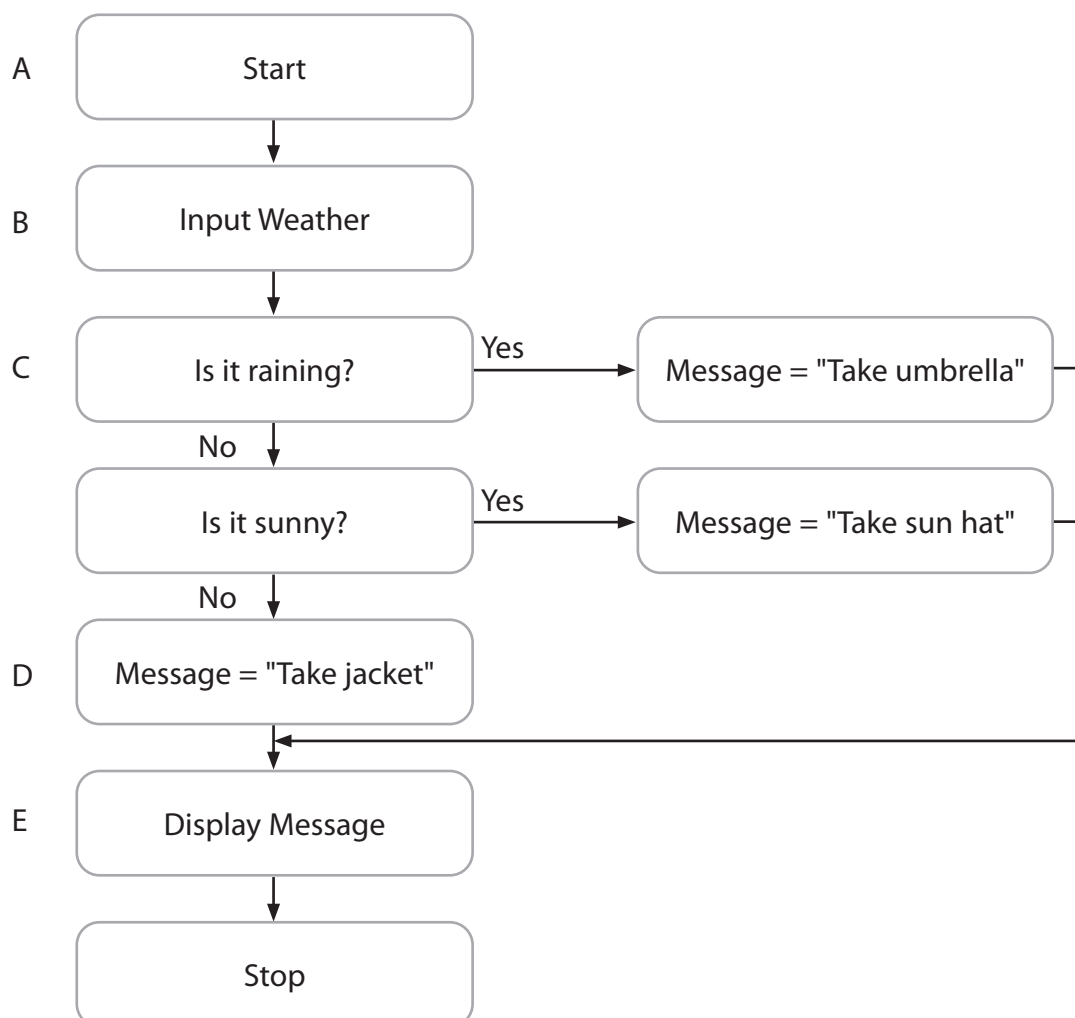


Figure 1

(a) Complete the table by adding the letter that identifies **each** structural component.

One has been completed for you.

(2)

Structural component	Letter
Selection	
Input	B
Output	



DO NOT WRITE IN THIS AREA

DO NOT WRITE IN THIS AREA

DO NOT WRITE IN THIS AREA

(b) Identify **two** variables used in the flowchart.

(2)

1

2

(c) Give the message that will be displayed if it is not sunny and not raining.

(1)

.....

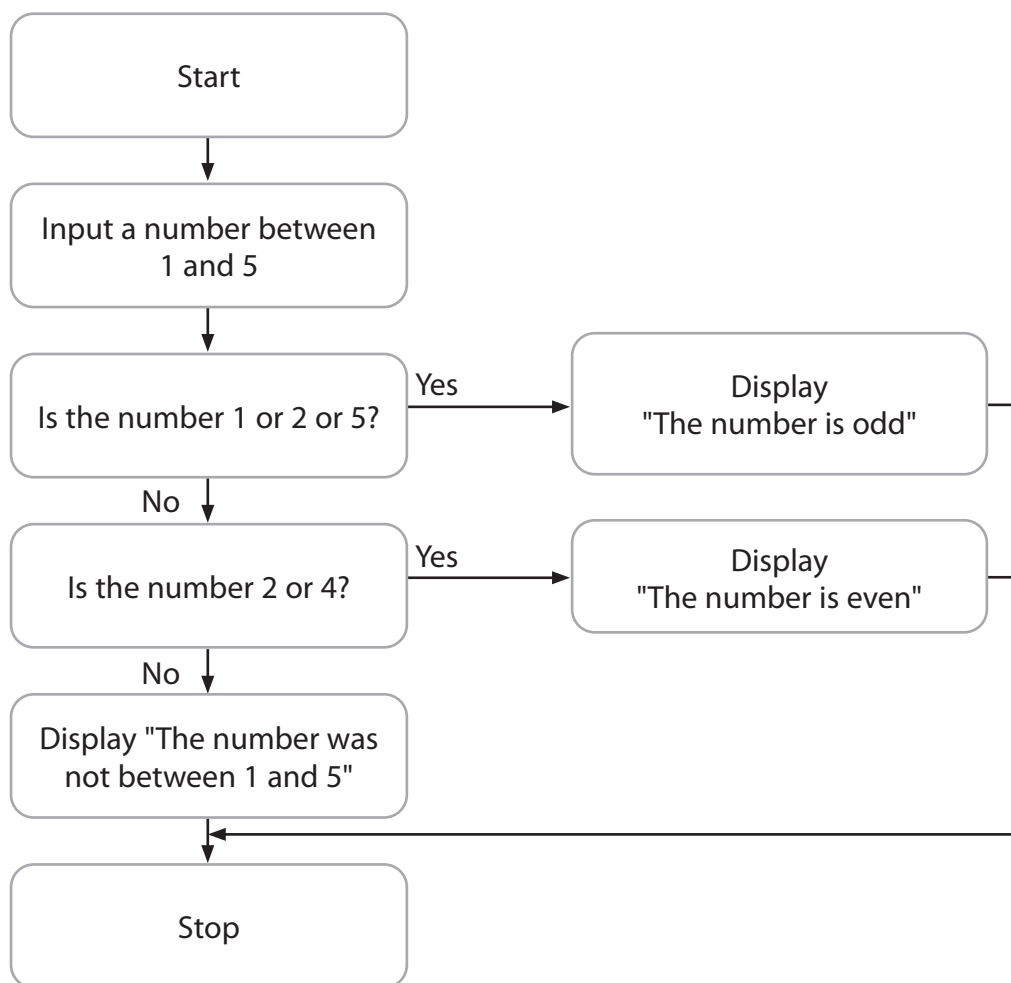
(Total for Question 22 = 5 marks)

.....



23 Look at **Figure 2**.

It shows a flowchart that displays whether a number between 1 and 5 is even or odd.

**Figure 2**

Entering the number 2 should display the message "The number is even".

There is an error in the flowchart. It displays the message "The number is odd".

Explain why the flowchart produces an incorrect message.

.....

.....

.....

.....

(Total for Question 23 = 2 marks)



24 A program must check whether a number input by the user matches a random number.

If the number input does not match the random number, then 'guess again' is displayed and the user inputs another number.

Create a flowchart to show the steps in this program.



(Total for Question 24 = 3 marks)

TOTAL FOR SECTION A = 40 MARKS



SECTION B

Answer ALL questions. Write your answers in the spaces provided.

Some questions must be answered with a cross in a box ☒. If you change your mind about an answer, put a line through the box ☒ and then mark your new answer with a cross ☒.

25 Look at **Figure 3**.

It shows the design for a slide in a presentation.

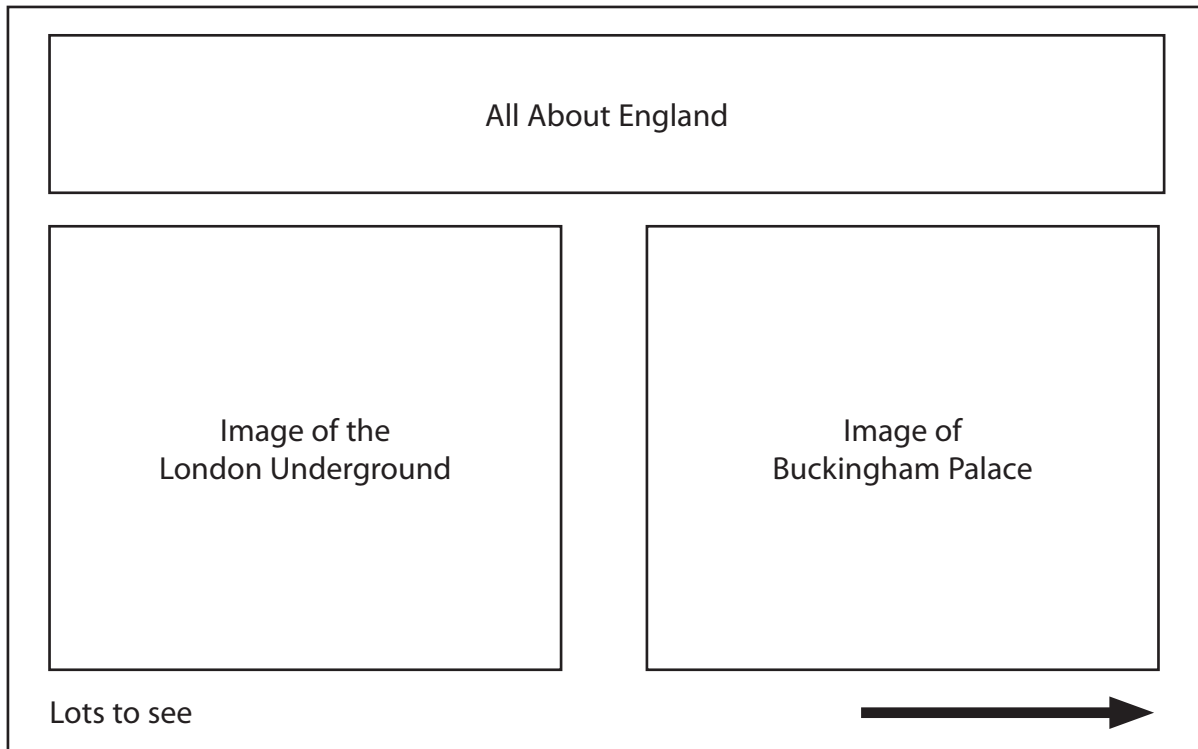


Figure 3

(a) Which **one** of these would be used to move the text 'Lots to see' across the slide towards the arrow?

(1)

- A** Animation
- B** Cut
- C** Rotate
- D** Transition



27 Look at **Figure 4**.

It shows part of a database table.

Trip ID	Trip Date	Location	Number Going	Cost Per Person
1	14/05/2021	Seamish Museum	15	£3.00
2	21/05/2021	Great Rail Museum	17	£3.50
3	28/05/2021	Vintage Car Museum	20	£4.00

Figure 4

- (a) The database table includes fields and records.

Explain the difference between a field and a record in this table.

(2)

.....

.....

.....

.....

- (b) State the data type used for the 'Cost Per Person' field.

(1)

.....

- (c) Which **one** of these criteria would find trips that cost £3.50 per person?

(1)

- A** Like 3.5
- B** Like £3.5
- C** Like £3.50
- D** Like 350

(Total for Question 27 = 4 marks)



28 Complete the sentence by choosing **one** word from the box.

recycled replaced refunded

Old digital devices could be to help reduce e-waste.

(Total for Question 28 = 1 mark)

29 Complete the sentence by choosing **one** word from the box.

columns formula rows

Numbers identify the in a spreadsheet.

(Total for Question 29 = 1 mark)



30 Look at **Figure 5**.

It shows part of a spreadsheet showing sales of computer games.

	A	B	C	D
1	Game Name	Number Sold	Price Each	Total
2	Sam the hedgehog	5	29.99	=B2 <input type="text"/> C2
3	The crown	3	15.00	
4	Tomorrow is here	2	30.00	
5		Total Sales		= (D2:D4)

Figure 5

(a) Which **one** of these would be used in cell D2 to calculate the total for the game 'Sam the hedgehog'?

(1)

- A** /
- B** -
- C** *
- D** +

(b) Give the name of the function that would be used in cell D5.

(1)

(Total for Question 30 = 2 marks)



31 Look at Figure 6.

It shows an image.



Figure 6

(a) Which **one** of these is indicated by the arrow?

(1)

- A Caption
- B Cell
- C Criterion
- D Crop

(b) Which **one** of these would be a sensible filename for the image?

(1)

- A Detective
- B Horse
- C Image
- D Wheel

(Total for Question 31 = 2 marks)

32 Which **one** of these statements describes how a file can be kept secure?

(1)

- A By using a folder
- B By using an operator
- C By using a password
- D By using a sensor

(Total for Question 32 = 1 mark)



33 Look at **Figure 7**.

It shows part of a poster giving information about after-school clubs.

Parts of the poster are labelled.

A → **After-school clubs**

B → 1. Clubs will be held on:

- Monday
- C → • Tuesday
- Thursday

D → Here are the clubs you can choose from

E → Football Netball Hockey
Baseball Swimming Tennis

Figure 7

- (a) Complete the table by giving the letter that shows where **each** formatting feature has been used.

(3)

Formatting feature	Letter
Tabs	
Numbering	
Bullets	

- (b) Complete the sentence.

(1)

The text '*After-school clubs*' has been formatted to have a grey background because
 has been used.

(Total for Question 33 = 4 marks)



34 Look at **Figure 8**.

It shows two versions of a table.

A →	<table border="1"><tr><td colspan="2">Goal Scorers</td></tr><tr><td>Bianca</td><td>5</td></tr></table>	Goal Scorers		Bianca	5
Goal Scorers					
Bianca	5				

B →	<table border="1"><tr><td>Goal Scorers</td><td></td></tr><tr><td>Bianca</td><td>5</td></tr></table>	Goal Scorers		Bianca	5
Goal Scorers					
Bianca	5				

Figure 8

Which **one** of these has been used to turn version A into version B?

- A** Alignment
- B** Merge cells
- C** Shading
- D** Split cells

(Total for Question 34 = 1 mark)

TOTAL FOR SECTION B = 20 MARKS
TOTAL FOR PAPER = 60 MARKS



DO NOT WRITE IN THIS AREA

DO NOT WRITE IN THIS AREA

DO NOT WRITE IN THIS AREA

BLANK PAGE

