

Please check the examination details below before entering your candidate information

Candidate surname	Other names
Pearson Edexcel International Award in Primary	Centre Number
Time 1 hour	Candidate Number
	Paper reference
	JCP11/01
<h1 style="margin: 0;">Computing</h1> <h2 style="margin: 0;">Year 6</h2> <h3 style="margin: 0;">Achievement Test</h3>	
You do not need any other materials.	Total Marks

Instructions

- Use **black** ink or ball-point pen.
- **Fill in the boxes** at the top of this page with your name, centre number and candidate number.
- Answer **all** questions.
- Answer the questions in the spaces provided – *there may be more space than you need.*

Information

- The total mark for this paper is 60.
- The marks for **each** question are shown in brackets – *use this as a guide as to how much time to spend on each question.*
- You must **NOT** use a calculator.

Advice

- Read each question carefully before you start to answer it.
- Try to answer every question.
- Check your answers if you have time at the end.
- Good luck with your examination.

Turn over ►



SECTION A

Answer ALL questions. Write your answers in the spaces provided.

Some questions must be answered with a cross in a box ☒. If you change your mind about an answer, put a line through the box ☒ and then mark your new answer with a cross ☒.

1 Which **one** of these describes what a camcorder is used for?

- A To capture text
- B To listen to music
- C To play a game
- D To record a video

(Total for Question 1 = 1 mark)

2 Which **one** of these is an output peripheral?

- A Buzzer
- B Keyboard
- C Mouse
- D Webcam

(Total for Question 2 = 1 mark)

3 Cyberattacks target digital systems and data.

(a) Complete the sentence.

(1)

Social works by tricking people into revealing confidential or personal information.

(b) Complete the sentence by choosing **one** word from the box.

(1)

phishing networking pharming

Redirecting someone to a fake website is known as

(Total for Question 3 = 2 marks)

DO NOT WRITE IN THIS AREA

DO NOT WRITE IN THIS AREA

DO NOT WRITE IN THIS AREA



4 There are many methods of securing online data and personal information.

(a) Give **one** difference between a password and a PIN.

(1)

(b) Which **one** of these is a method used to secure data and personal information?

(1)

- A Biometrics
- B Connecting
- C Phishing
- D Searching

(Total for Question 4 = 2 marks)

5 Circle the correct description of the Internet.

A global online service

A global networks of networks

A global collection of webpages

(Total for Question 5 = 1 mark)

6 Pete wants a copy of a film to watch offline.

Which **one** of these methods should he use to get the film?

- A Blogging
- B Decomposing
- C Downloading
- D Streaming

(Total for Question 6 = 1 mark)



7 Sasha wants to use an image that she has found on a website.

Which **one** of these is legislation she should consider?

- A Bias
- B Copyright
- C Etiquette
- D Security

(Total for Question 7 = 1 mark)

8 Samihah uses a cable TV network to connect to the Internet.





Give the names of **two other** networks that she could use to connect to the Internet.

1

2

(Total for Question 8 = 2 marks)

9 Which **one** of these searches will return results that have the three keywords *look after cats* in that order?

- A X 
- B X 
- C X 
- D X 

(Total for Question 9 = 1 mark)



10 **Figure 1** shows the top two results from a search engine.

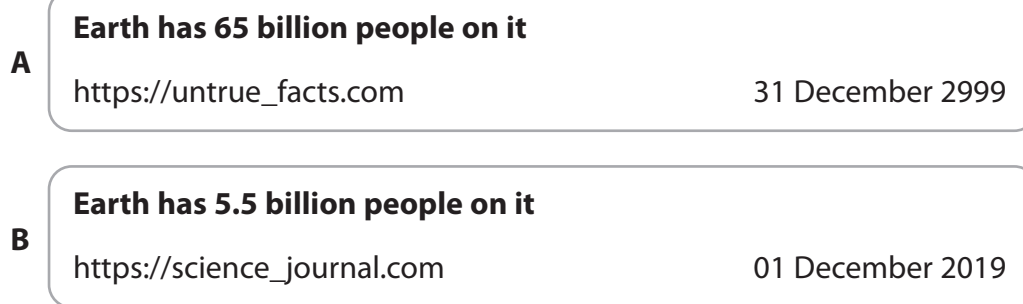


Figure 1

(a) Give the letter of the result that is more likely to be reliable. (1)

(b) Explain **one** reason why this result is more likely to be reliable. (2)

(Total for Question 10 = 3 marks)

11 Complete the sentence.

A bookmark is a shortcut to a web

(Total for Question 11 = 1 mark)



12 People should take regular breaks when using computers.

(a) Give **one other** way of preventing eye strain.

(1)

.....
.....

(b) Give **one other** way of preventing wrist strain.

(1)

.....
.....

(Total for Question 12 = 2 marks)

13 Complete the sentence by choosing **one** word from the box.

emailing transferring wired

Digital devices can communicate with each other by

..... data across a network.

(Total for Question 13 = 1 mark)



14 Complete the sentence by choosing **one** word from the box.

legislation cyberbullying DBMS

Using technology to threaten or embarrass another person is

.....

(Total for Question 14 = 1 mark)

15 Complete the sentence.

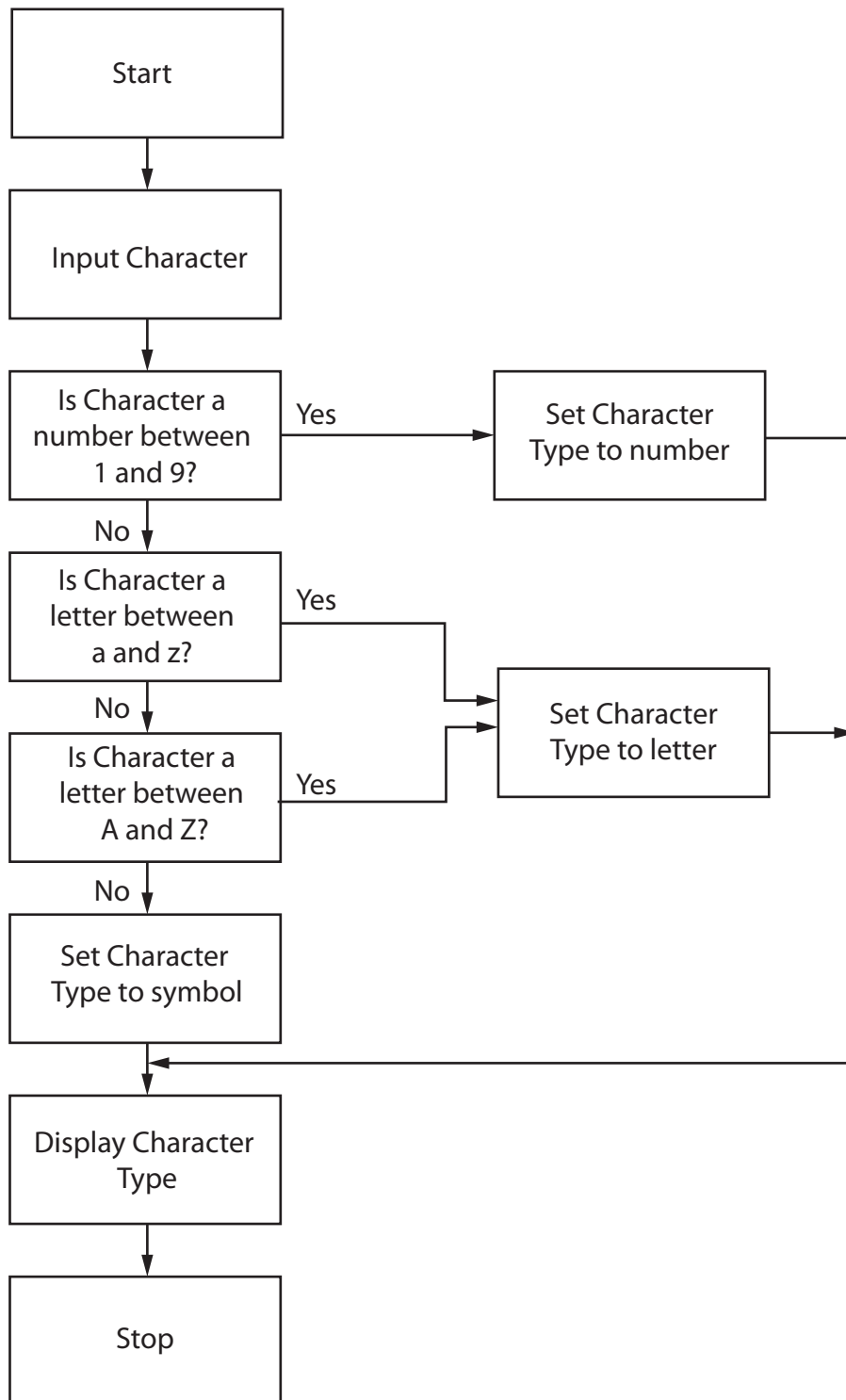
An is a set of instructions that describes how to solve a problem.

(Total for Question 15 = 1 mark)



16 Look at **Figure 2**.

It shows a flowchart.

**Figure 2**

(a) Describe what this flowchart does.

(2)

.....

.....

.....

.....

(b) Identify the **two** variables used in the flowchart.

(2)

1

2

(c) Complete the sentence by choosing **two** words from the box.

(2)

steps sequence string sentence selection

The flowchart includes the structural constructs

and

(Total for Question 16 = 6 marks)



- 17 A and B show two versions of an algorithm that inputs two numbers, adds them together and displays the answer. B is a decomposed version of A.

Complete the steps that are missing in version B.

A	B
Get input	Get input
Calculate Answer	Input first number
Display Answer
	Calculate Answer

	Display Answer

(Total for Question 17 = 2 marks)

- 18 A program is used to calculate pocket money.

(a) Give the data type for weekly pocket money.

(1)

(b) Which **one** of these calculates yearly pocket money?

(1)

- A = weekly pocket money * 52
- B = weekly pocket money / 52
- C = weekly pocket money + 52
- D = weekly pocket money - 52

(Total for Question 18 = 2 marks)

- 19 Which **one** of these data types has the possible values true or false?

- A Boolean
- B Integer
- C Real
- D String

(Total for Question 19 = 1 mark)

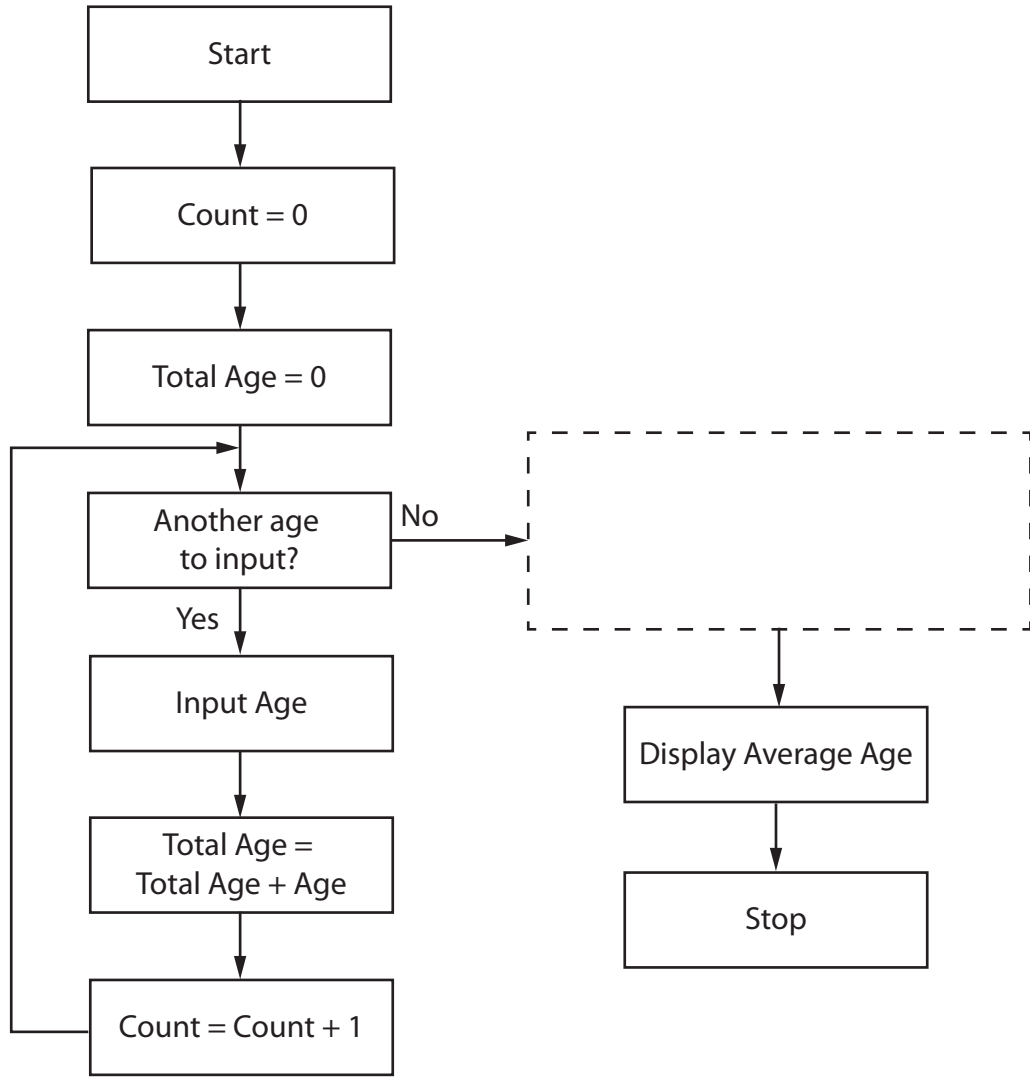


DO NOT WRITE IN THIS AREA

DO NOT WRITE IN THIS AREA

DO NOT WRITE IN THIS AREA

20 This flowchart calculates average age.



Complete the flowchart.

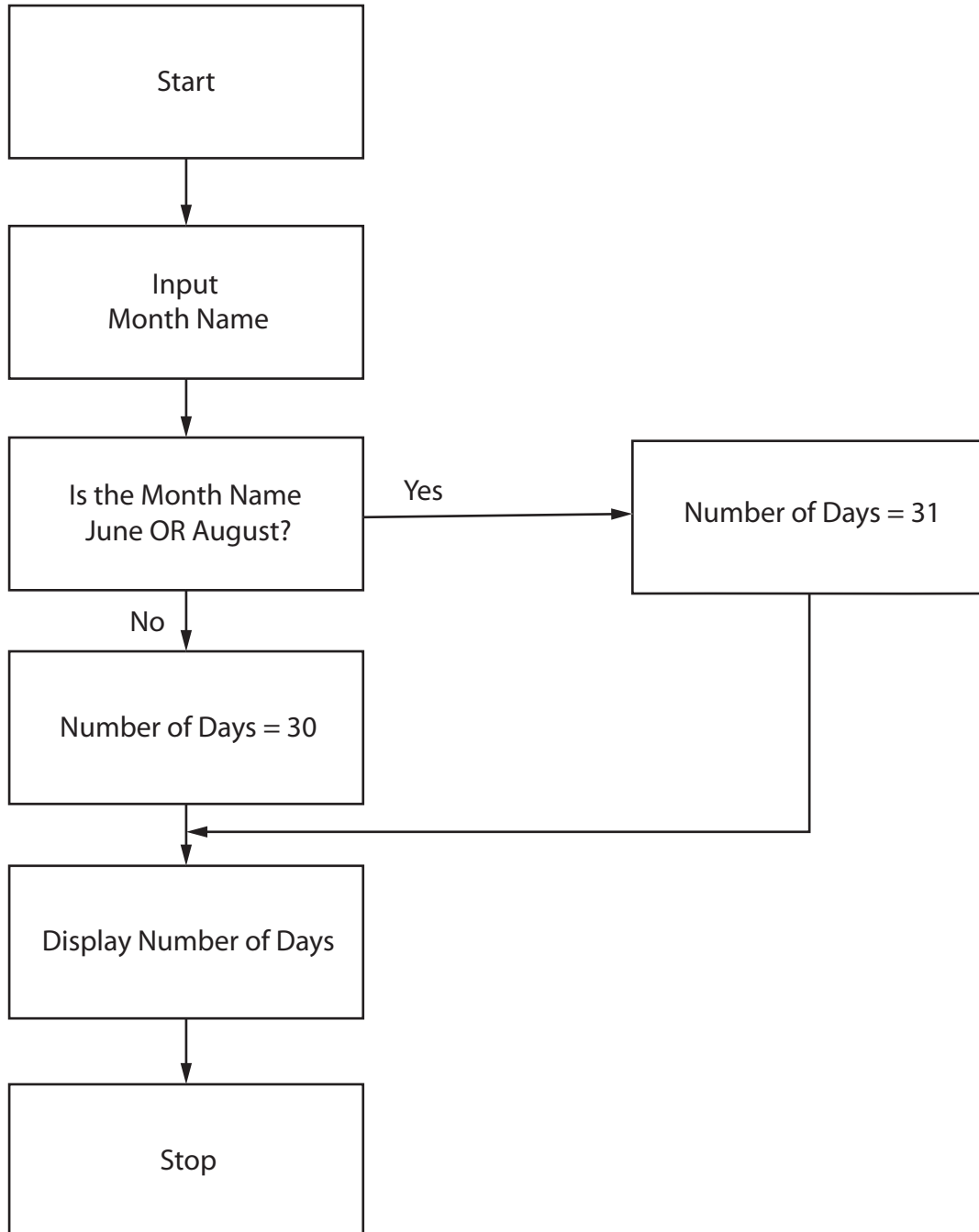
(Total for Question 20 = 1 mark)



21 This table shows the number of days in June, July and August.

June	July	August
30	31	31

This flowchart displays the number of days in each month. It contains an error.



(a) Circle the box that has the error.

(1)

(b) Explain the error.

(2)

.....

.....

.....

.....

(c) Complete the sentence by choosing **one** word from the box.

(1)

logical	real	digital
---------	------	---------

This error is a error.

(Total for Question 21 = 4 marks)

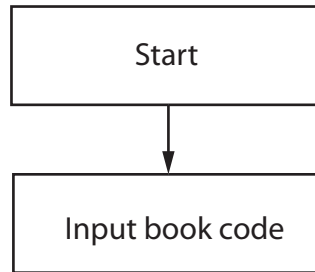


22 A program checks that a book code is four-characters long.

If the book code is not four-characters long, then an error message is displayed.

If the book code is four-characters long, then the book title is displayed.

Create a flowchart to show the steps in this program.



(Total for Question 22 = 3 marks)

TOTAL FOR SECTION A = 40 MARKS



SECTION B

Answer ALL questions. Write your answers in the spaces provided.

Some questions must be answered with a cross in a box ☒. If you change your mind about an answer, put a line through the box ☒ and then mark your new answer with a cross ☒.

23 Explain **one** reason why the amount of e-waste is increasing.

.....

.....

.....

.....

(Total for Question 23 = 2 marks)

24 Which **one** of these is used for creating a poster?

- A** Database management
- B** Desktop publishing
- C** Search engine
- D** Spreadsheet

(Total for Question 24 = 1 mark)

25 Complete the sentence by choosing **one** word from the box.

formulae image filename

Using a sensible means that it can be easier to find a document at a later date.

(Total for Question 25 = 1 mark)



26 Here is some text.

Getting ready
for school

- 1 Get out of bed
- 2 Get ready
 - a. Clean teeth
 - b. Brush hair
 - c. Put clothes on
- 3 Eat breakfast
- 4 Pack school bag
- 5 Walk to school

Clean your teeth!

A

B

C

D

- (a) Draw a line from **A** to where a text box has been used. (1)
- (b) Draw a line from **B** to where centre alignment has been used. (1)
- (c) Draw a line from **C** to where sub-numbering has been used. (1)
- (d) Draw a line from **D** to where shading has been used. (1)

(Total for Question 26 = 4 marks)



27 Here is part of a database table.

BookID	Book Name	Author	Price
BK0123	Mathematics is fun	K Selby	£13.99
BK0124	Computer Science in everyday life	J Bowls	£19.99
BK0125	Science experiments	R J Ahmed	£12.00

(a) Circle a field on the table. (1)

(b) Which **one** of these would be used as the data type for Price? (1)

- A Currency
- B Date
- C Number
- D Text

(c) Which **one** of these is used to find books that cost £19.99? (1)

- A =£19.99
- B >£19.99
- C =19.99
- D >19.99

(Total for Question 27 = 3 marks)



28 Here is part of a spreadsheet showing some test results.

	A	B	C	D	E
1	Name	Subject	Mark	Subject	Mark
2	Mohammad	Maths	65	English	55
3	Noah	Maths	79	English	60
4	Zeneal	Maths	55	English	79
5		Average Maths Mark	66.3	Average English Mark	64.7

(a) Circle a cell on the spreadsheet. (1)

(b) Which **one** of these is used to calculate the value in E5? (1)

- A =AVERAGE(C2:C4)
- B =AVERAGE(A2:E2)
- C =AVERAGE(A4:E4)
- D =AVERAGE(E2:E4)

(Total for Question 28 = 2 marks)

DO NOT WRITE IN THIS AREA

DO NOT WRITE IN THIS AREA

DO NOT WRITE IN THIS AREA



29 Which **one** of these arithmetic operators would be used to subtract 10 from 12?

- A /
- B +
- C *
- D -

(Total for Question 29 = 1 mark)

30 Here is a slide.

English to French

Click to hear English word



Click to hear French word

pomme de terre

<https://englishtofrench.com>

A
B

(a) Which **one** of these is the component labelled **A**?

(1)

- A Animation
- B Button
- C Image
- D Video

(b) Draw a line from **B** to where an external hyperlink has been used.

(1)

(Total for Question 30 = 2 marks)



31 Look at **Figure 3**.

It shows a snowman that has been drawn using a graphics program.



Figure 3

(a) Complete the sentence by choosing **two** words from the box.

(2)

line circle rectangle triangle arrow

The snowman has been drawn using and shapes.

(b) Describe the steps you would take to put a hat on the snowman using a graphics program.

(2)

.....

.....

.....

.....

(Total for Question 31 = 4 marks)

TOTAL FOR SECTION B = 20 MARKS
TOTAL FOR PAPER = 60 MARKS

