

Please check the examination details below before entering your candidate information

Candidate surname

Other names

Centre Number

Candidate Number

**Pearson Edexcel International
Award in Primary**

Tuesday 2 June 2020

Morning (Time: 1 hour)

Paper Reference **JCP11/01**

Computing

Year 6

Achievement Test

You do not need any other materials.

Total Marks

Instructions

- Use **black** ink or ball-point pen.
- **Fill in the boxes** at the top of this page with your name, centre number and candidate number.
- Answer **all** questions.
- Answer the questions in the spaces provided
– *there may be more space than you need.*

Information

- The total mark for this paper is 60.
- The marks for **each** question are shown in brackets
– *use this as a guide as to how much time to spend on each question.*
- You must **NOT** use a calculator.

Advice

- Read each question carefully before you start to answer it.
- Try to answer every question.
- Check your answers if you have time at the end.

Turn over ►

P67239RA

©2020 Pearson Education Ltd.

1/1/1/



Pearson

SECTION A

Answer ALL questions. Write your answers in the spaces provided.

Some questions must be answered with a cross in a box ☒. If you change your mind about an answer, put a line through the box ☒ and then mark your new answer with a cross ☒.

1 Which **one** of these is an input device?

- A Microphone
- B Printer
- C Screen
- D Speaker

(Total for Question 1 = 1 mark)

2 Which **one** of these software applications is best for analysing numerical data?

- A Graphics
- B Presentation
- C Spreadsheet
- D Word processor

(Total for Question 2 = 1 mark)

3 One feature of a smartphone is that it can connect to the Internet.

Give **one other** feature of a smartphone.

.....

.....

(Total for Question 3 = 1 mark)

DO NOT WRITE IN THIS AREA

DO NOT WRITE IN THIS AREA

DO NOT WRITE IN THIS AREA



4 Complete the sentence by choosing **two** words from the box.

usernames	DBMS	records	passwords	catalogues
-----------	------	---------	-----------	------------

To log in securely and can be used.

(Total for Question 4 = 2 marks)

5 Which **one** of these is a biometric security method?

- A Email address
- B Fingerprint
- C Password
- D PIN

(Total for Question 5 = 1 mark)

6 Which **one** of these is a form of social engineering?

- A Bias
- B DBMS
- C Shoulder surfing
- D Streaming

(Total for Question 6 = 1 mark)

7 Which **one** of these is a form of cyberbullying?

- A Posting insults about someone on social media
- B Spreading rumours about someone in a lesson
- C Telling lies about someone to a teacher in the playground
- D Using someone else's library card

(Total for Question 7 = 1 mark)



8 Give **one** way someone could get help to stop cyberbullying.

.....

.....

(Total for Question 8 = 1 mark)

9 Complete the sentence by choosing **one** word from the box.

loud	repeat	silent	speaker
------	--------	--------	---------

Setting a mobile phone ringer to when in public areas shows respect for other people.

(Total for Question 9 = 1 mark)

10 Which of these describes the world wide web (WWW)?

- A A collection of webpages accessed through the Internet
- B A global computer network of networks
- C A global website
- D A wireless network

(Total for Question 10 = 1 mark)

11 These steps are used to buy a product online.

Number the steps in the correct order.

The first step has been completed for you.

Add product to basket

Go to the checkout

Browse product catalogue until product is found

Pay securely

(Total for Question 11 = 2 marks)



DO NOT WRITE IN THIS AREA

DO NOT WRITE IN THIS AREA

DO NOT WRITE IN THIS AREA

12 One feature of social networking and online gaming communities is a user profile.

(a) Give **two other** features of a social networking community. (2)

1

2

(b) Give **one other** feature of an online gaming community. (1)

.....

.....

(Total for Question 12 = 3 marks)

13 Complete the sentence.

Taking regular breaks from looking at a screen can help minimise strain.

(Total for Question 13 = 1 mark)

14 Computers can be connected in a network.

(a) Give **one** reason why a school would use a network. (1)

.....

.....

(b) Complete the sentence.

Tablets connected to a school network use a connection. (1)

(Total for Question 14 = 2 marks)



15 **Figure 1** shows two versions of an algorithm for handwashing.

A	B
Wet hands	Wet hands
Clean hands	Clean hands
Rinse hands	<i>Put soap on hands</i>
Dry hands	<i>Rub hands together</i>
	<i>Repeat until hands are clean</i>
	Rinse hands
	Dry hands

Figure 1

Which **one** of these describes the process used to change A into B?

- A** Convention
- B** Decomposition
- C** Selection
- D** Sequence

(Total for Question 15 = 1 mark)

16 Which **one** of these describes a variable in a computer program?

- A** A value that can change
- B** A value that cannot change
- C** A value that must be input
- D** A value used only once

(Total for Question 16 = 1 mark)

17 A program will use variables to store details of books.

Variables should have meaningful names. For example, bookTitle is used to store the title of the book.

Give a meaningful name for **one other** variable that the program will use.

(Total for Question 17 = 1 mark)



18 A program asks a user to input:

- the first letter of their first name
- their age
- their last name
- whether they attended school today.

Complete the table by giving the data type that should be used for each input.

(a)	first letter of first name		(1)
(b)	age		(1)
(c)	last name		(1)
(d)	attended today?		(1)

(Total for Question 18 = 4 marks)



19 Look at **Figure 2**.

It shows three flowcharts.

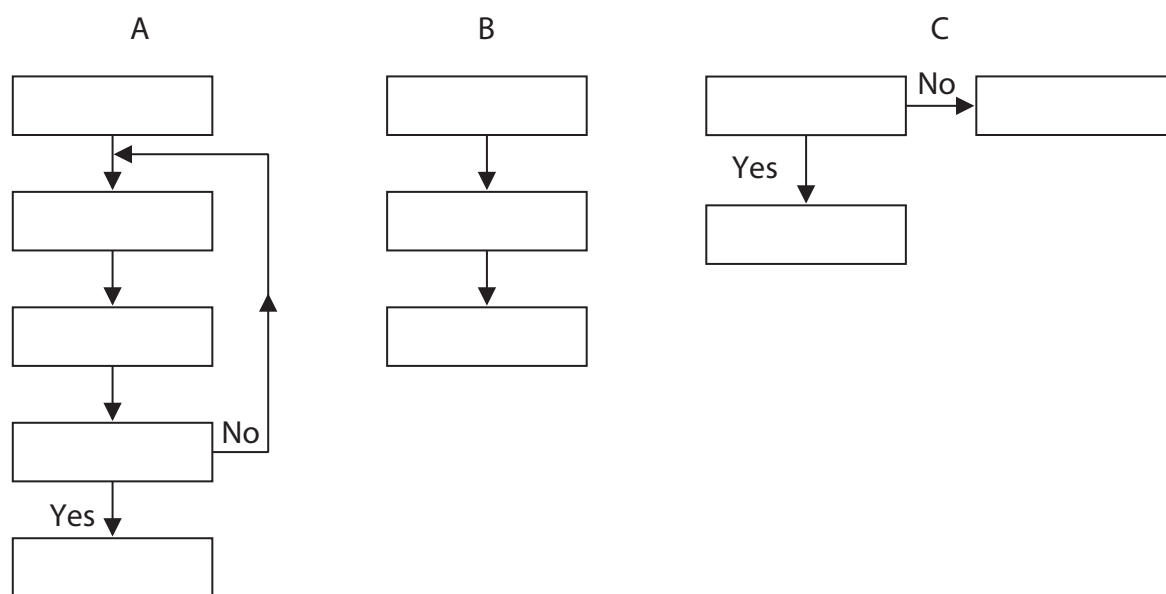


Figure 2

(a) Give the letter of the flowchart that **only** shows a sequence.

(1)

(b) Give the letter of the flowchart that **only** shows a selection.

(1)

(c) Give the letter of the flowchart that shows a repetition.

(1)

(Total for Question 19 = 3 marks)

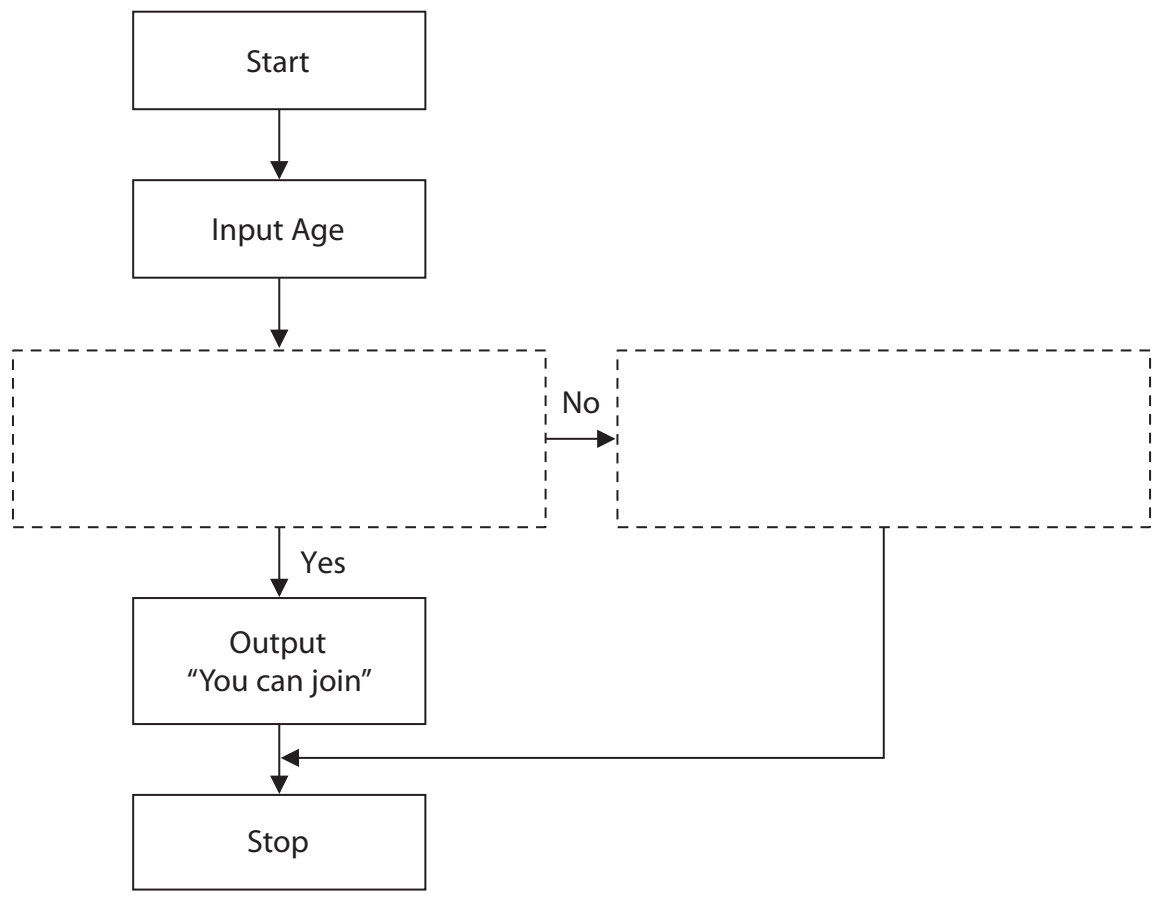


DO NOT WRITE IN THIS AREA

DO NOT WRITE IN THIS AREA

DO NOT WRITE IN THIS AREA

20 This flowchart checks that people who want to join a walking club are over 16.



Complete the flowchart.

(Total for Question 20 = 2 marks)



21 Look at **Figure 3**.

It shows a flowchart.

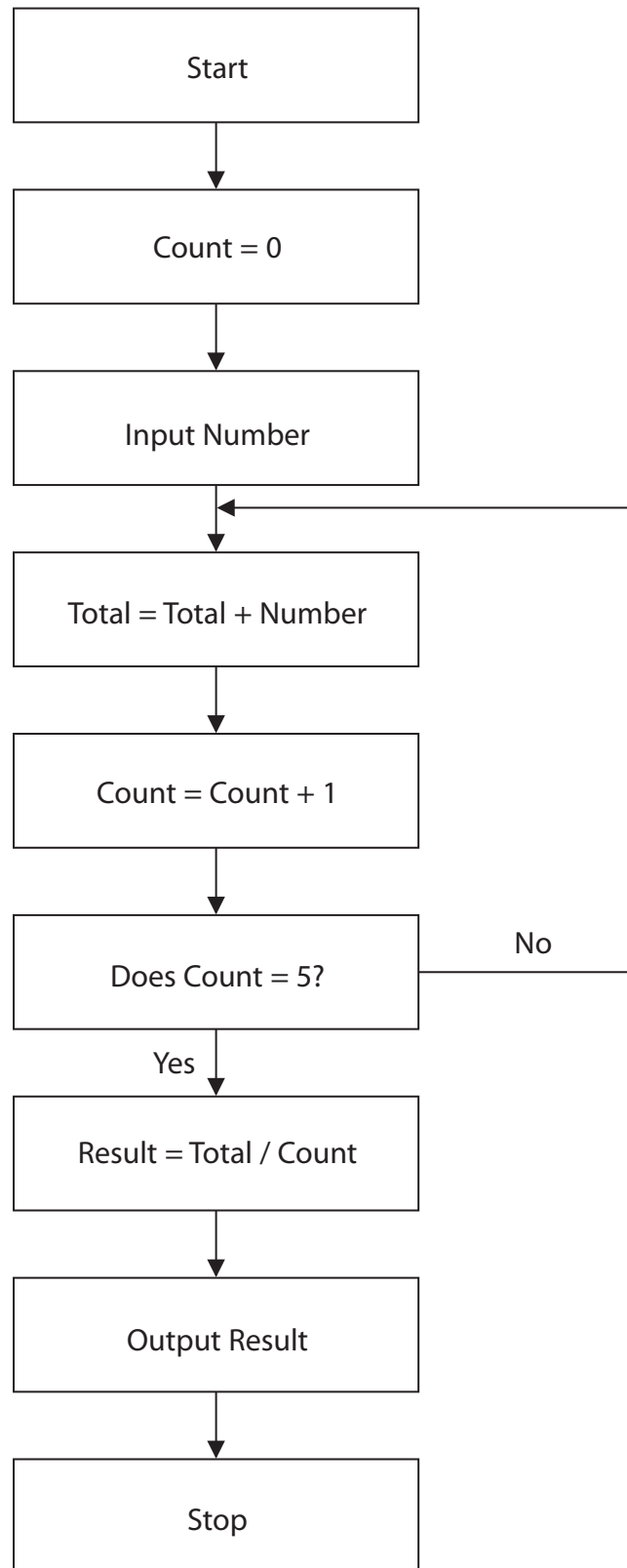


Figure 3



DO NOT WRITE IN THIS AREA

DO NOT WRITE IN THIS AREA

DO NOT WRITE IN THIS AREA

(a) Describe what this flowchart does.

(2)

.....

.....

.....

.....

(b) Explain why the variables **Result** and **Count** would have different data types.

(2)

.....

.....

.....

.....

(Total for Question 21 = 4 marks)



22 Look at **Figure 4**.

It shows a flowchart.

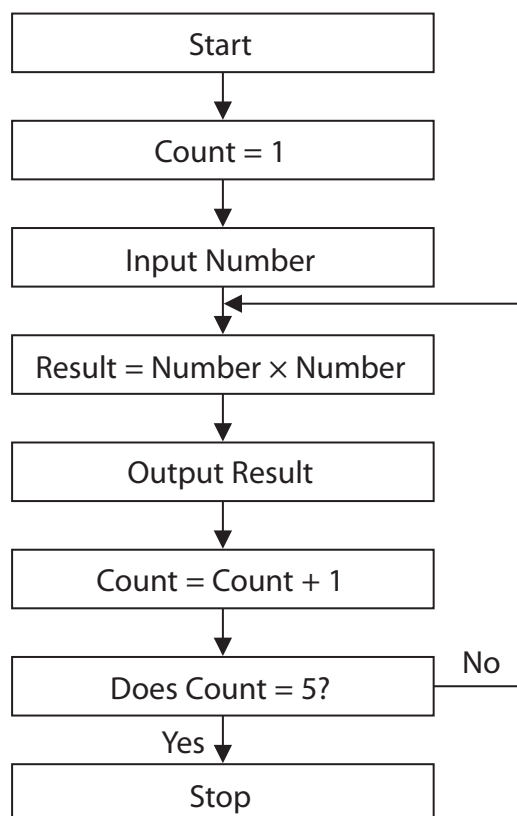


Figure 4

Inputting the number 5 should output these results: 5, 10, 15, 20, 25

There is an error in the flowchart. It produces these results: 25, 25, 25, 25, 25

Explain why the flowchart produces incorrect results.

.....

.....

.....

.....

(Total for Question 22 = 2 marks)



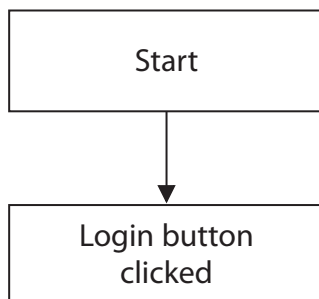
DO NOT WRITE IN THIS AREA

23 A program must make sure a username is present when the login button is clicked.

If the username is not present, then an error message is displayed.

If the username is present, then a welcome message is displayed.

Create a flowchart to show the steps in this program.



(Total for Question 23 = 3 marks)

TOTAL FOR SECTION A = 40 MARKS



SECTION B

Answer ALL questions. Write your answers in the spaces provided.

Some questions must be answered with a cross in a box ☒. If you change your mind about an answer, put a line through the box ☒ and then mark your new answer with a cross ☒.

24 Give **one** example of e-waste.

.....
.....

(Total for Question 24 = 1 mark)

25 Complete the sentence.

Files can be kept by using a password.

(Total for Question 25 = 1 mark)

26 Give **one** reason why it is important to use an organised folder structure.

.....
.....

(Total for Question 26 = 1 mark)

DO NOT WRITE IN THIS AREA

DO NOT WRITE IN THIS AREA

DO NOT WRITE IN THIS AREA



DO NOT WRITE IN THIS AREA

DO NOT WRITE IN THIS AREA

DO NOT WRITE IN THIS AREA

27 Look at **Figure 5**.

It shows part of a database table.

StudentID	Forename	Surname	Town	Telephone Number	Weekly Music Lessons
0001	Ian	Bell	Fenstead	0770 0900207	2
X { 0002	Daniel	Squires	Meriton	0770 0900380	0
0003	Hannah	Hudson	Fenstead	0770 0900853	3
0004	Peter	Squires	Dilmouth	0770 0900040	3

Figure 5

(a) Which **one** of these is the correct database term for **X**?

- A** Cell
- B** Column
- C** Field
- D** Record

(1)

(b) Give **one** reason why the data type for 'telephone number' is text.

(1)

(Total for Question 27 = 2 marks)



28 Look at **Figure 6**.

It shows a formatted table.

	Movie	Start Time	Duration
A			
B	The Tiger King and Lion Queen Rock the Jungle	19:00	1 hour 50 minutes
C	Y Men Return	18:45	2 hours

Figure 6

- (a) Draw a line from **A** to a cell where horizontal centre alignment has been used. (1)
- (b) Draw a line from **B** to a cell where vertical centre alignment has been used. (1)
- (c) Draw a line from **C** to a cell where text wrap has been used. (1)

(Total for Question 28 = 3 marks)

29 Compare how font size and font style change the appearance of text.

.....

.....

.....

.....

(Total for Question 29 = 2 marks)

30 You have typed in a sentence and want to increase the font size of one word.

Describe the steps you would take to do this.

.....

.....

.....

.....

(Total for Question 30 = 2 marks)



DO NOT WRITE IN THIS AREA

DO NOT WRITE IN THIS AREA

DO NOT WRITE IN THIS AREA

31 Look at **Figure 7**.

It is part of a spreadsheet showing lunch sales.

	A	B	C	D	E	F	G	H	I	J
1		Mon	Tues	Wed	Thurs	Fri	Average Sold	Total Number Sold	Cost Each £	Sales Total £
2	Sandwiches	10	5	5	10	5	7	35	£1.12	
3	Apples	5	5	7	5	5	5.4	27	£0.30	
4	Bottled water	15	10	12	15	10	12.4	62	£0.75	

Figure 7

(a) Which **one** of these is used to calculate the value in cell G2?

(1)

- A** =AVERAGE(B2:F2)
- B** =AVERAGE(B2:F4)
- C** =AVERAGE(B2:F2)/5
- D** =AVERAGE(B2+C2+D2+E2)/5

(b) Which **one** of these is used to calculate the value in cell H3?

(1)

- A** =SUM(B3+C3+D3+E3)
- B** =SUM(B3:F4)
- C** =SUM(B3:F3)
- D** =SUM(B3:G3)

(c) Give the formula that would be used to calculate the value in cell J4.

(1)

(d) The spreadsheet extract needs to be included in a letter to be sent to parents.

Which **one** of these software applications would need to be used to create the letter?

(1)

- A** Database management
- B** Graphics
- C** Presentation
- D** Word processing

(Total for Question 31 = 4 marks)



32 Annabel is creating a quiz presentation.

She would like each slide to fade out before the next slide appears.

(a) Which **one** of these tools would she need to use?

(1)

- A** Animation effect
- B** Hyperlink
- C** Narrator
- D** Transition effect

(b) Give **one** example of how a button could be used in this presentation.

(1)

(Total for Question 32 = 2 marks)

33 Look at **Figure 8**.

It shows two images of bees.



Figure 8

Which **one** of these tools has been used to create **B** from **A**?

- A** Crop
- B** Resize
- C** Rotate
- D** Snip

(Total for Question 33 = 1 mark)



DO NOT WRITE IN THIS AREA

DO NOT WRITE IN THIS AREA

DO NOT WRITE IN THIS AREA

34 Give **one** reason for using a caption with an image.

.....

.....

(Total for Question 34 = 1 mark)

TOTAL FOR SECTION B = 20 MARKS
TOTAL FOR PAPER = 60 MARKS



DO NOT WRITE IN THIS AREA

DO NOT WRITE IN THIS AREA

DO NOT WRITE IN THIS AREA

BLANK PAGE

