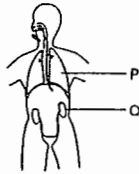


1. In the diagram, which characteristic activity of living organisms is carried out by both P and O?



- A excretion
- B movement
- C nutrition
- D reproduction

2. The biological name of a coffee plant is *Coffea arabica*.

Which information about the plant is given by this name?

- A family and genus
- B genus and species
- C species and variety
- D variety and family

3. The diagram shows a cold-blooded vertebrate which is found near water.



It has a smooth, moist skin and four limbs.

To which class does it belong?

- A amphibians
- B fish
- C mammals
- D reptiles

4. Two characteristics of all living organisms are

- A breathing and reproduction.
- B reproduction and respiration.
- C respiration and photosynthesis.
- D photosynthesis and excretion.

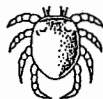
5. The diagram shows some external features of a rat.



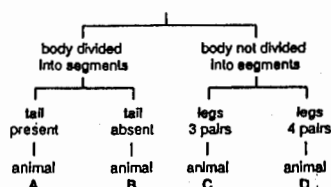
Which features, seen in the diagram, show that a rat is a mammal?

- A diaphragm and lungs
- B fur and whiskers
- C legs and tail
- D milk and sweat production

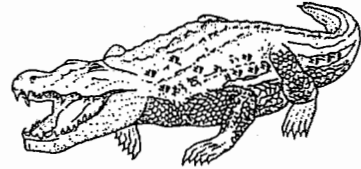
6. The diagram shows a pond animal.



Using the key, which pond animal is it?



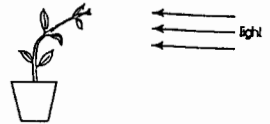
7. The diagram shows a vertebrate animal.



Using the key, to which class does the animal belong?

- 1 animal has four legs go to 2
- animal has two legs class A
- 2 body covered with hair class B
- body not covered with hair go to 3
- 3 scales absent class C
- scales present class D

8. The diagram shows a plant which has received light from one side only.



Which characteristics is the plant showing?

- A excretion and growth
- B growth and irritability (response)
- C irritability (response) and reproduction
- D reproduction and nutrition

9. The table shows the characteristics of four animals.

Which animal is a fish?

animal	characteristics		
	fins	fur	scales
A	✓	x	x
B	x	✓	x
C	x	x	✓
D	✓	x	✓

key
✓ = present
x = absent

10. A person picks up the telephone after hearing it ring.

Which characteristics of living organisms is the person showing by this action?

- A excretion and reproduction
- B growth and respiration
- C movement and irritability (response)
- D nutrition and respiration

11. The drawing shows a ground squirrel.



Which feature identifies this animal as a mammal?

- A eye
- B four limbs
- C fur
- D tail

12. The diagram shows an animal.



Using the key, what is the identity of the animal?

- 1 wings present 2
- wings absent 3
- 2 one pair of wings animal A
- two pairs of wings animal B
- 3 legs, three pairs animal C
- legs, four pairs animal D

13. The table shows some characteristics of four animals.
Which animal is a fish?

animal	characteristics		
	fins	hair	scales
A	✓	X	X
B	X	✓	X
C	X	X	✓
D	✓	X	✓

key
✓ = present
X = absent

14. The diagram shows a dog about to catch a stick.



Which characteristics of living organisms does this action involve?

- A excretion and reproduction
B growth and respiration
C movement and irritability
D nutrition and irritability
15. Which information is needed when classifying a frog using the binomial system?
- A class : amphibian
B genus : *Rana*
C kingdom : animal
D phylum : vertebrate

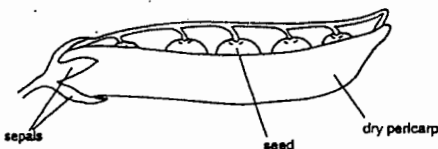
16. The table lists six of the seven characteristics of living organisms.

characteristics of living organisms
1 excretion
2 growth
3 irritability
4 nutrition
5 reproduction
6 respiration
7 ?

What is the seventh characteristic?

- A co-ordination
B digestion
C movement
D sight
17.
$$\text{water} + \text{carbon dioxide} \xrightarrow[\text{chlorophyll}]{\text{sunlight}} \text{sugar} + \text{oxygen}$$
- Which characteristic of living organisms is shown by this equation?
- A excretion
B nutrition
C reproduction
D respiration

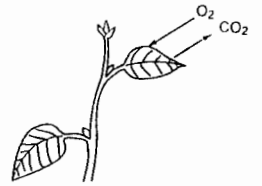
18. The diagram shows a type of fruit.



Using the following key, what is this type of fruit?

- 1 Sepals fall off as soon as the flower is fertilised..... go to 2
Sepals do not fall off as soon as the flower is fertilised..... go to 3
2 Pericarp dry, containing fewer than four seeds..... type A
Pericarp dry, containing more than four seeds..... type B
3 Fruit splits to release several seeds..... type C
Fruit splits to release only one seed..... type D

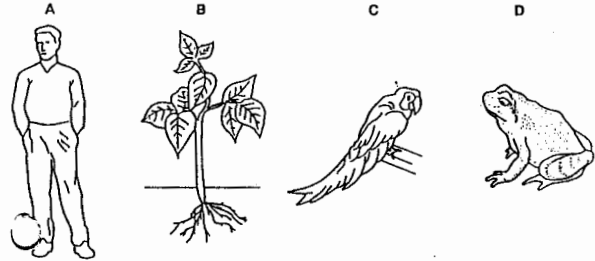
19. The diagram shows part of a green plant.



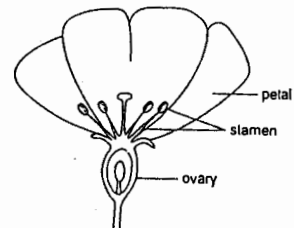
Which process leads directly to the exchange of the gases indicated?

- A growth
B movement
C nutrition
D respiration
20. Excretion, irritability and reproduction are characteristics of
- A all animals and plants.
B animals only.
C plants only.
D some animals and some plants only.
21. What is the correct way to write the biological name of the lion?
- A *Panthera Leo*
B panthera Leo
C *Panthera leo*
D panthera leo

22. Which diagram shows an organism able to reproduce sexually, respire and carry out photosynthesis?



23. The diagram shows a half flower.



Using the following key, what type of flower is it?

- 1 petals above the ovary go to 2
petals below the ovary go to 3
2 stamens less than ten Type A
stamens more than ten Type B
3 sepals absent Type C
sepals present Type D

24. The diagram shows the external features of a lizard.



Which feature identifies this animal as a reptile?

- A two eyes
B dry scales
C four legs
D long tail
25. Which of the following is a chemical reaction releasing energy in all living organisms?

- A excretion
B movement
C reproduction
D respiration