
PAKISTAN STUDIES

0448/02

Paper 2 The Environment of Pakistan

May/June 2014

INSERT

1 hour 30 minutes

READ THESE INSTRUCTIONS FIRST

This Insert contains Fig. 6 for Question 3 and Photographs A and B for Question 5.



This document consists of **3** printed pages and **1** blank page.

Fig. 6 for Question 3

COTTON FABRICS INTERNATIONAL



FOR THE BEST QUALITY COTTON

Look at the huge range of cotton cloth on our website

www.cottonfabricsinternational.com

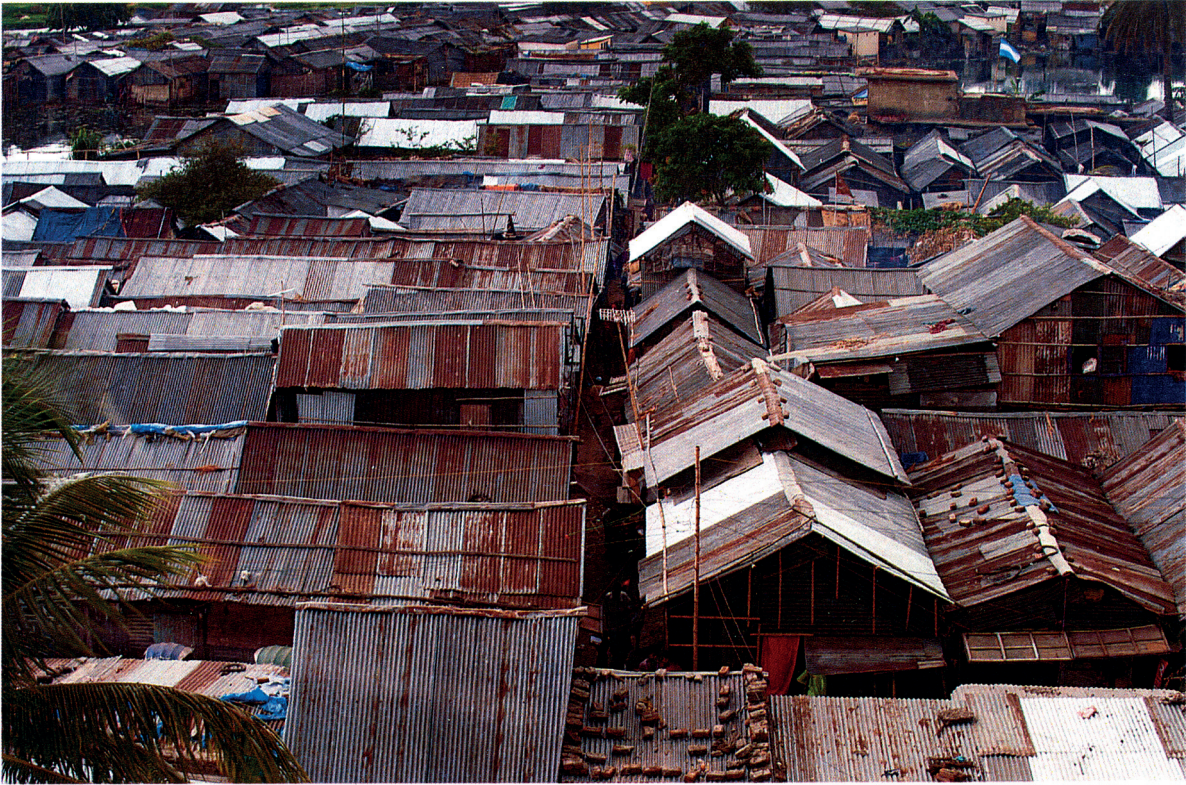
Contact Cotton Fabrics International, Faisalabad, Pakistan

Tel. 041-9234188

Fax. 041-9234189

E-mail: cottonfabricsinternational@pakcom.com

Photograph A for Question 5



Photograph B for Question 5



BLANK PAGE

Permission to reproduce items where third-party owned material protected by copyright is included has been sought and cleared where possible. Every reasonable effort has been made by the publisher (UCLES) to trace copyright holders, but if any items requiring clearance have unwittingly been included, the publisher will be pleased to make amends at the earliest possible opportunity.

Cambridge International Examinations is part of the Cambridge Assessment Group. Cambridge Assessment is the brand name of University of Cambridge Local Examinations Syndicate (UCLES), which is itself a department of the University of Cambridge.