



UNIVERSITY OF CAMBRIDGE INTERNATIONAL EXAMINATIONS
International General Certificate of Secondary Education

CANDIDATE
NAME

CENTRE
NUMBER

--	--	--	--	--

CANDIDATE
NUMBER

--	--	--	--

* 4 7 4 5 8 6 7 1 8 1 *

MATHEMATICS

0581/32

Paper 3 (Core)

October/November 2011

2 hours

Candidates answer on the Question Paper.

Additional Materials:

Electronic calculator
Mathematical tables (optional)

Geometrical instruments
Tracing paper (optional)

READ THESE INSTRUCTIONS FIRST

Write your Centre number, candidate number and name on all the work you hand in.

Write in dark blue or black pen.

You may use a pencil for any diagrams or graphs.

Do not use staples, paper clips, highlighters, glue or correction fluid.

DO NOT WRITE IN ANY BARCODES.

Answer **all** questions.

If working is needed for any question it must be shown below that question.

Electronic calculators should be used.

If the degree of accuracy is not specified in the question, and if the answer is not exact, give the answer to three significant figures. Give answers in degrees to one decimal place.

For π , use either your calculator value or 3.142.

At the end of the examination, fasten all your work securely together.

The number of marks is given in brackets [] at the end of each question or part question.

The total of the marks for this paper is 104.

This document consists of **16** printed pages.



- 1 Mr and Mrs Sayed and their 3 children go on holiday.
They travel to the airport by train.

(a) The train departs at 16 20.

(i) They leave home 45 minutes before the train departs.

Find the time at which they leave home.

Answer(a)(i) [1]

(ii) Write 16 20 using the 12-hour clock.

Answer(a)(ii) [1]

(b) The train fare is \$24 for an adult.

The train fare for a child is $\frac{2}{3}$ of an adult fare.

Find

(i) the fare for a child,

Answer(b)(i) \$ [1]

(ii) the total fare for Mr and Mrs Sayed and their 3 children.

Answer(b)(ii) \$ [2]

2 Aminata buys a business costing \$23 000.

- (a) She pays part of this cost with \$12 000 of her own money.

Calculate what percentage of the \$23 000 this is.

Answer(a) % [1]

- (b) Aminata's brother gives her 32% of the remaining \$11 000.

Show that \$7 480 is still needed to buy the business.

Answer(b)

[2]

- (c) Aminata borrows the \$7 480 at a rate of 3.5% per year **compound** interest.

Calculate how much money she owes at the end of 3 years.

Answer(c) \$ [3]

- (d) In the first year Aminata spent \$11 000 on salaries, equipment and expenses.

$\frac{2}{5}$ of this money was spent on salaries, 0.45 of this money was spent on equipment and the remainder was for expenses.

Calculate how much of the \$11 000 was spent on

- (i) salaries,

Answer(d)(i) \$ [1]

- (ii) equipment,

Answer(d)(ii) \$ [1]

- (iii) expenses.

Answer(d)(iii) \$ [1]

- (e) The three items in **part (d)** are in the ratio salaries : equipment : expenses = 0.4 : 0.45 : 0.15 .

Write this ratio in its simplest form.

Answer(e) : : [2]

3 (a)

$$\mathbf{r} = \begin{pmatrix} 3 \\ -2 \end{pmatrix} + \begin{pmatrix} -5 \\ -2 \end{pmatrix}$$

For
Examiner's
Use(i) Write down \mathbf{r} as a single vector.

$$\text{Answer(a)(i) } \mathbf{r} = \begin{pmatrix} \\ \end{pmatrix} \quad [1]$$

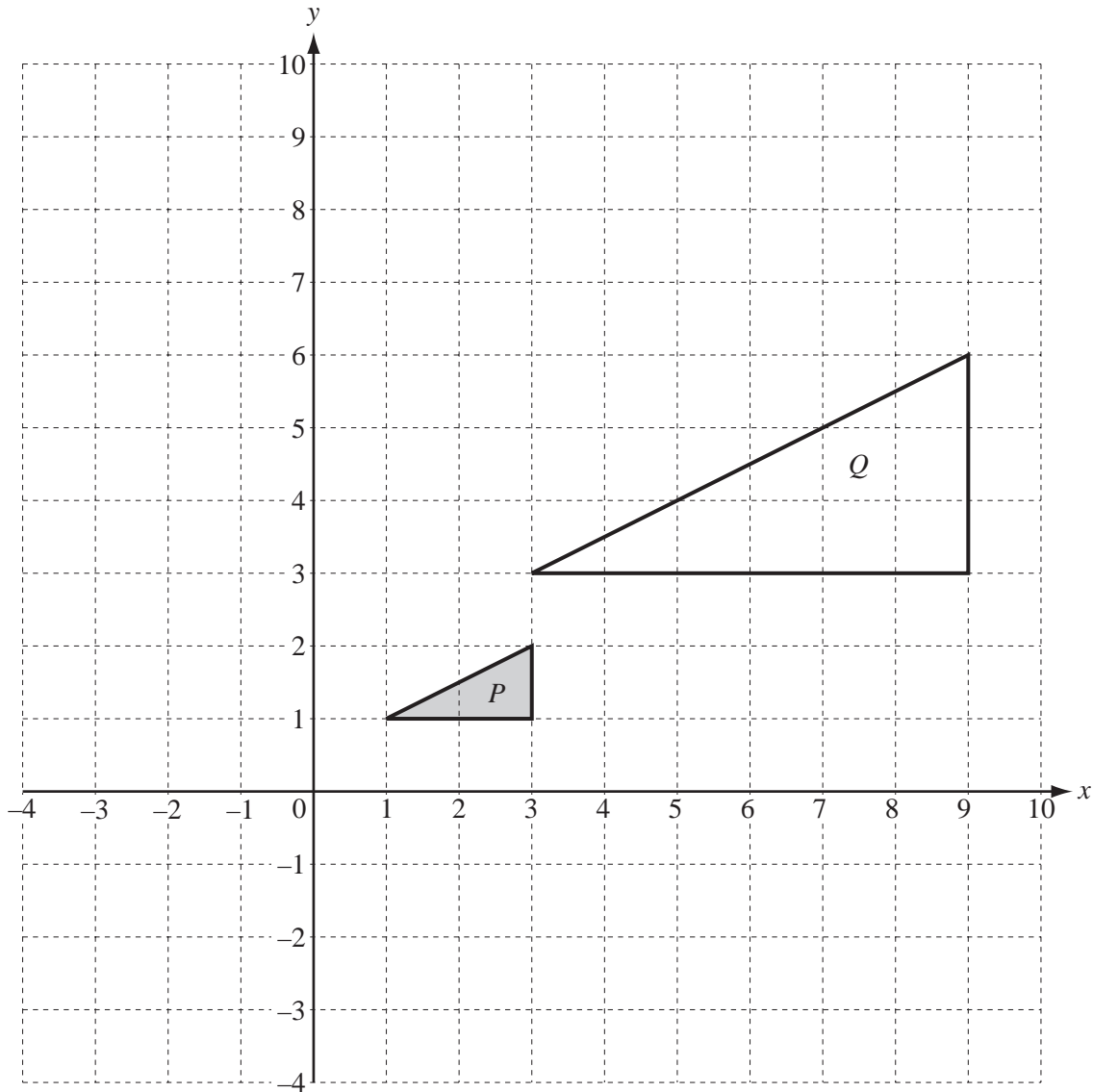
(ii) The point $G(3, 2)$ is translated by the vector \mathbf{r} to the point H .Find the co-ordinates of H .

$$\text{Answer(a)(ii) } (\dots\dots\dots , \dots\dots\dots) \quad [1]$$

(iii) Write down the vector of the translation that maps H onto G .

$$\text{Answer(a)(iii) } \begin{pmatrix} \\ \end{pmatrix} \quad [1]$$

(b)



The diagram shows two triangles P and Q .

- (i) Describe fully the **single** transformation which maps P onto Q .

Answer(b)(i) [3]

- (ii) On the grid, draw the reflection of P in the line $x = 0$. Label this image R . [2]

- (iii) On the grid, rotate P through 180° about $(0, 0)$. Label this image S . [2]

- (iv) Describe fully the **single** transformation which maps triangle S onto triangle R .

Answer(b)(iv) [2]

- 4 (a) Expand and simplify $3(2x + y) + 5(x - y)$.

Answer(a) [2]

- (b) Expand $x^2(3x - 2y)$.

Answer(b) [2]

- (c) Factorise completely $4y^2 - 10xy$.

Answer(c) [2]

(d) $y = \frac{4x^2}{3}$

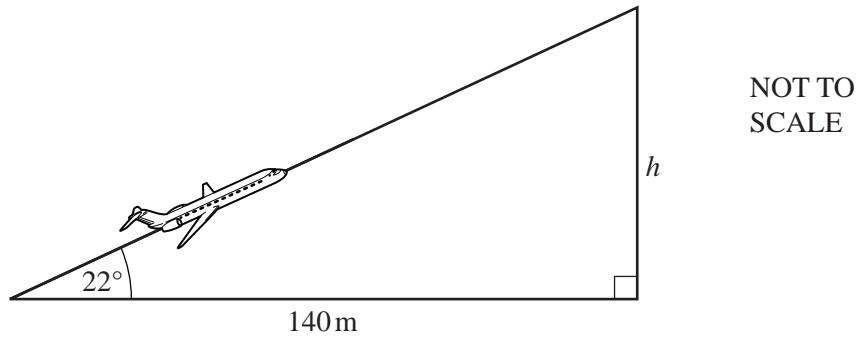
- (i) Find the value of y when $x = -3$.

Answer(d)(i) $y =$ [2]

- (ii) Make x the subject of the formula.

Answer(d)(ii) $x =$ [3]

- 5 (a) An aeroplane takes off 140 metres before reaching the end of the runway.
It climbs at an angle of 22° to the horizontal ground.



Calculate the height of the aeroplane, h , when it is vertically above the end of the runway.

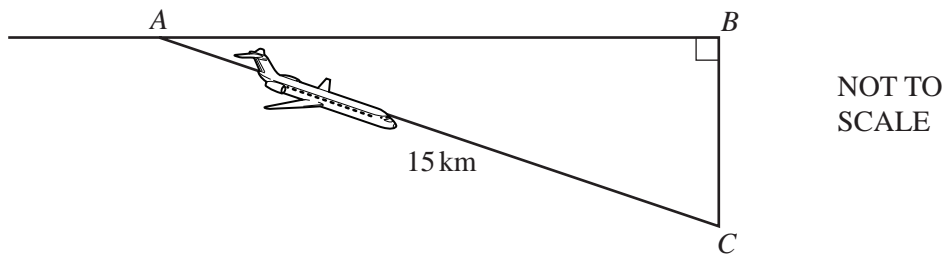
Answer(a) $h = \dots\dots\dots$ m [2]

- (b) After 3 hours 30 minutes the aeroplane has travelled 1850 km.

Calculate the average speed of the aeroplane.

Answer(b) $\dots\dots\dots$ km/h [2]

- (c)



The aeroplane descends from A , at a height of 12 000 metres, to C , at a height of 8 300 metres.

- (i) Work out the vertical distance, BC , that the aeroplane descends.

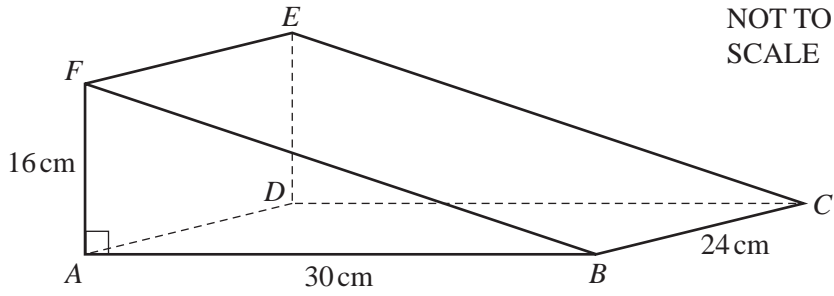
Answer(c)(i) $\dots\dots\dots$ m [1]

- (ii) The distance AC is 15 kilometres.

Calculate angle BAC .

Answer(c)(ii) Angle $BAC = \dots\dots\dots$ [2]

6



For
Examiner's
Use

The diagram shows a wedge in the shape of a triangular prism.

$AB = 30\text{ cm}$, $AF = 16\text{ cm}$ and $BC = 24\text{ cm}$. Angle $BAF = 90^\circ$.

(a) Calculate

(i) the area of triangle ABF ,

Answer(a)(i) cm^2 [2]

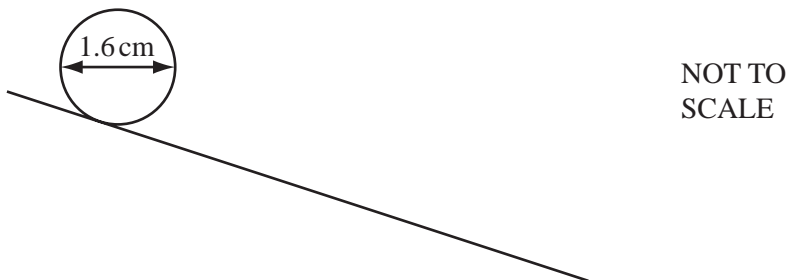
(ii) the volume of the wedge.

Answer(a)(ii) cm^3 [1]

(b) (i) Calculate BF .

Answer(b)(i) cm [2]

(ii)



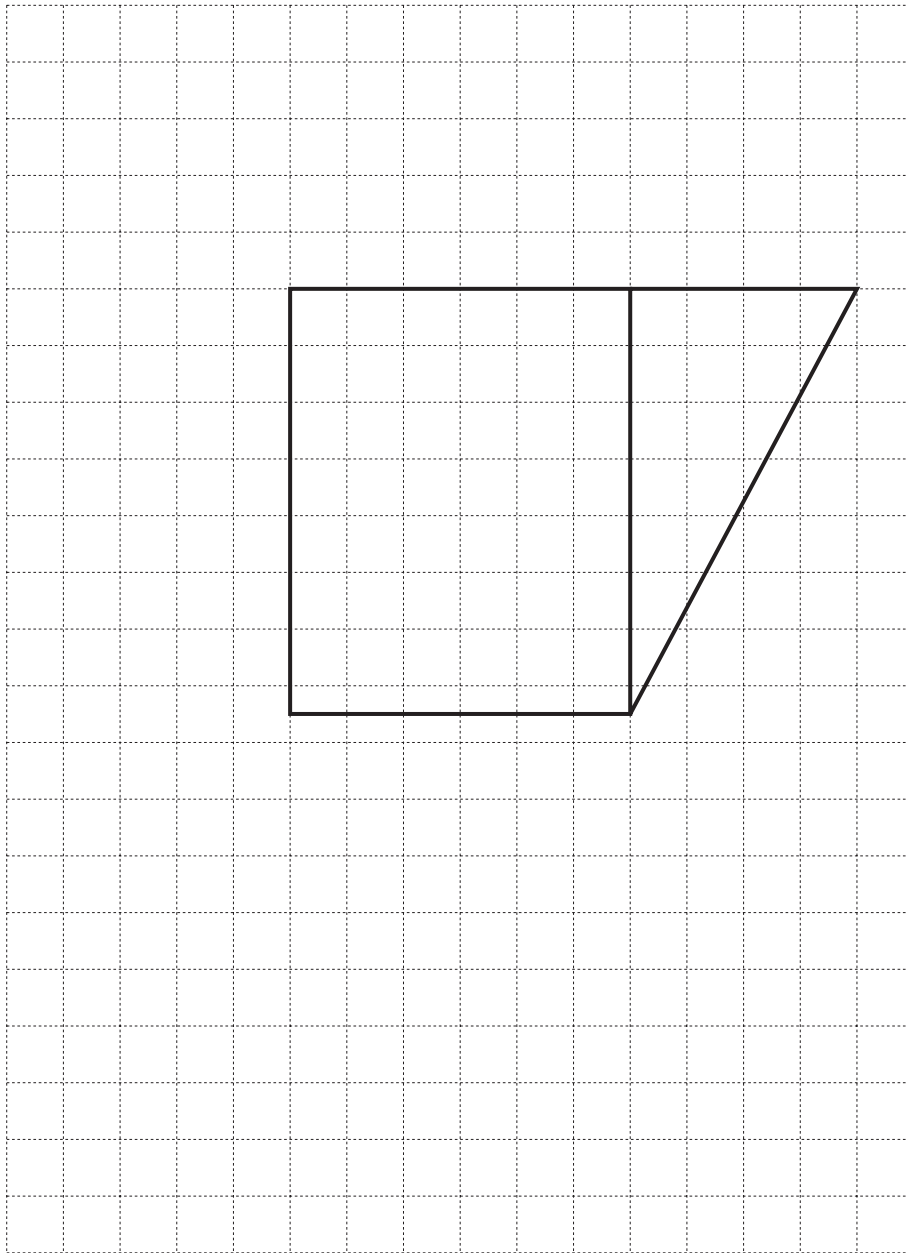
A coin with diameter 1.6 cm is rolled down the sloping surface of the wedge. It travels in a straight line parallel to BF , starting on FE and ending on BC .

Calculate the number of **complete** turns it makes.

Answer(b)(ii) [3]

- (c) On the grid, complete the net of the wedge.
The base and one of the triangles have been drawn for you.

Each square on the grid represents a square of side 4 centimetres.



[3]

- (d) Calculate the surface area of the wedge.

Answer(d) cm^2 [3]

For
Examiner's
Use

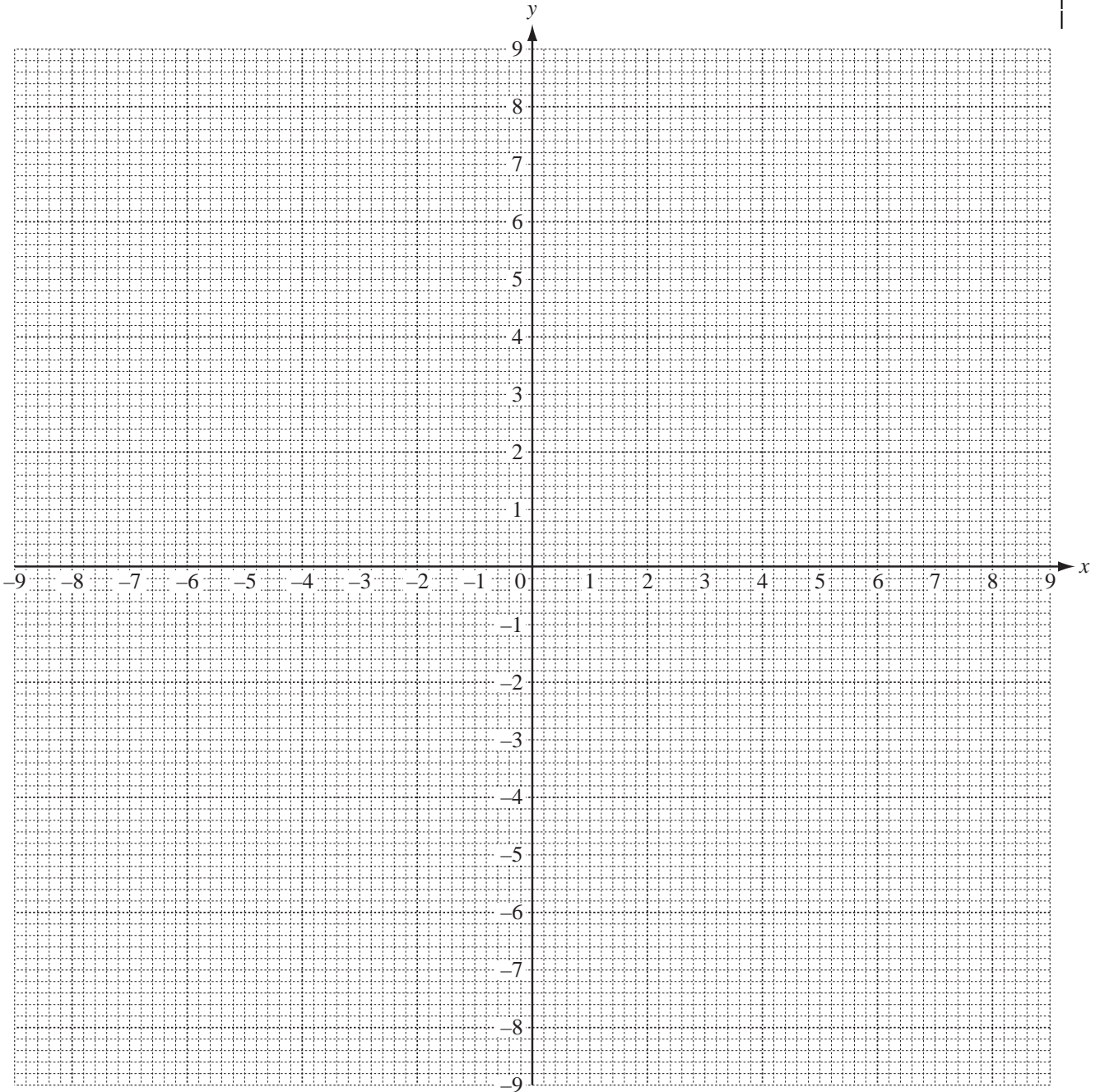
7 (a) The table shows some values for $y = \frac{18}{x}$.

x	-9	-6	-4	-3	-2		2	3	4	6	9
y	-2		-4.5		-9				4.5	3	

(i) Complete the table.

[2]

(ii) On the grid, draw the graph of $y = \frac{18}{x}$ for $-9 \leq x \leq -2$ and $2 \leq x \leq 9$.



[4]

(iii) Use your graph to solve the equation $\frac{18}{x} = -5$.

Answer(a)(iii) $x =$ [1]

- (b) (i) Complete the table of values for $y = 2x + 3$.

x	-4	-3	2	3
y	-5		7	

[2]

- (ii) On the grid, draw the graph of $y = 2x + 3$ for $-4 \leq x \leq 3$.

[1]

- (iii) Find the co-ordinates of the points of intersection of the graphs of

$$y = \frac{18}{x} \text{ and } y = 2x + 3.$$

Answer(b)(iii) (..... ,) and (..... ,) [2]

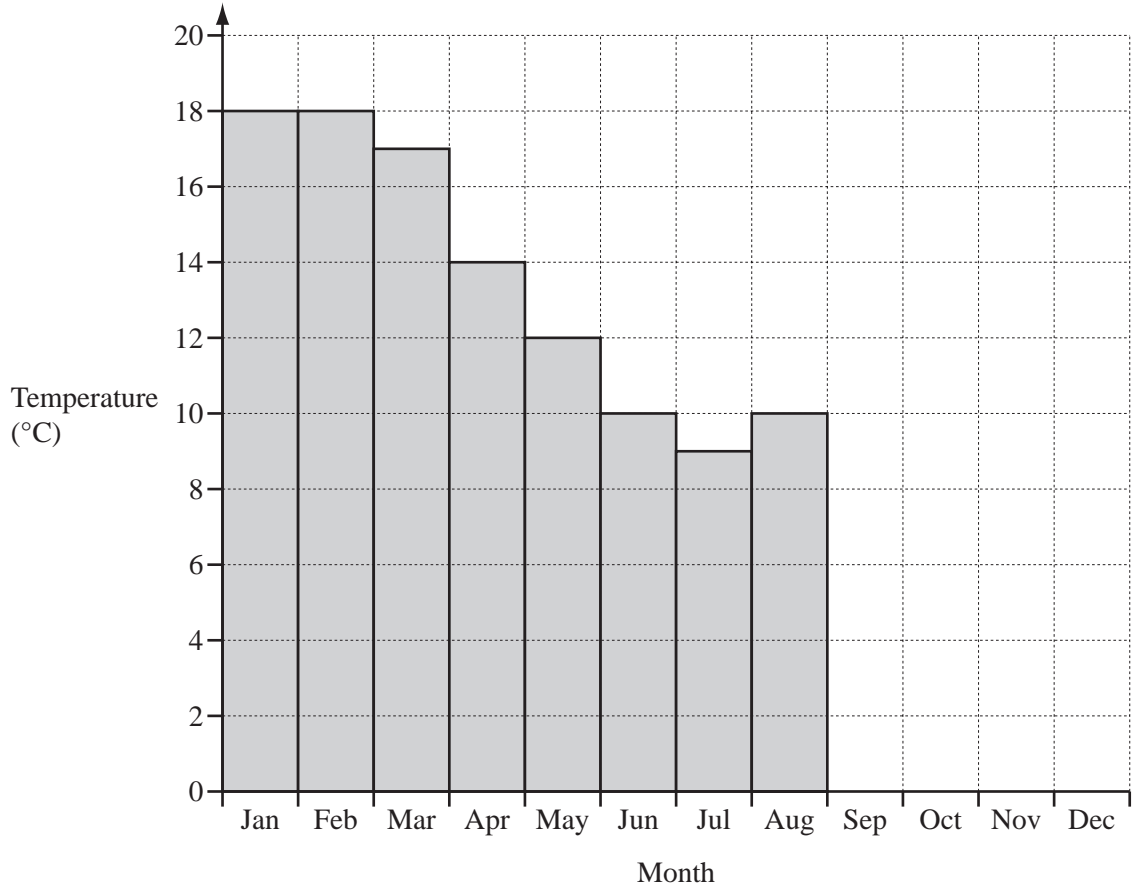
*For
Examiner's
Use*

8 The table shows the average temperature and rainfall each month at Wellington airport.

For
Examiner's
Use

Month	Jan	Feb	Mar	Apr	May	Jun	Jul	Aug	Sep	Oct	Nov	Dec
Temperature (°C)	18	18	17	14	12	10	9	10	11	13	15	16
Rainfall (mm)	67	48	76	87	99	113	111	106	82	81	74	74

(a) Complete the bar chart to show the **temperature** each month.



[2]

(b) For the **rainfall** calculate

(i) the mean,

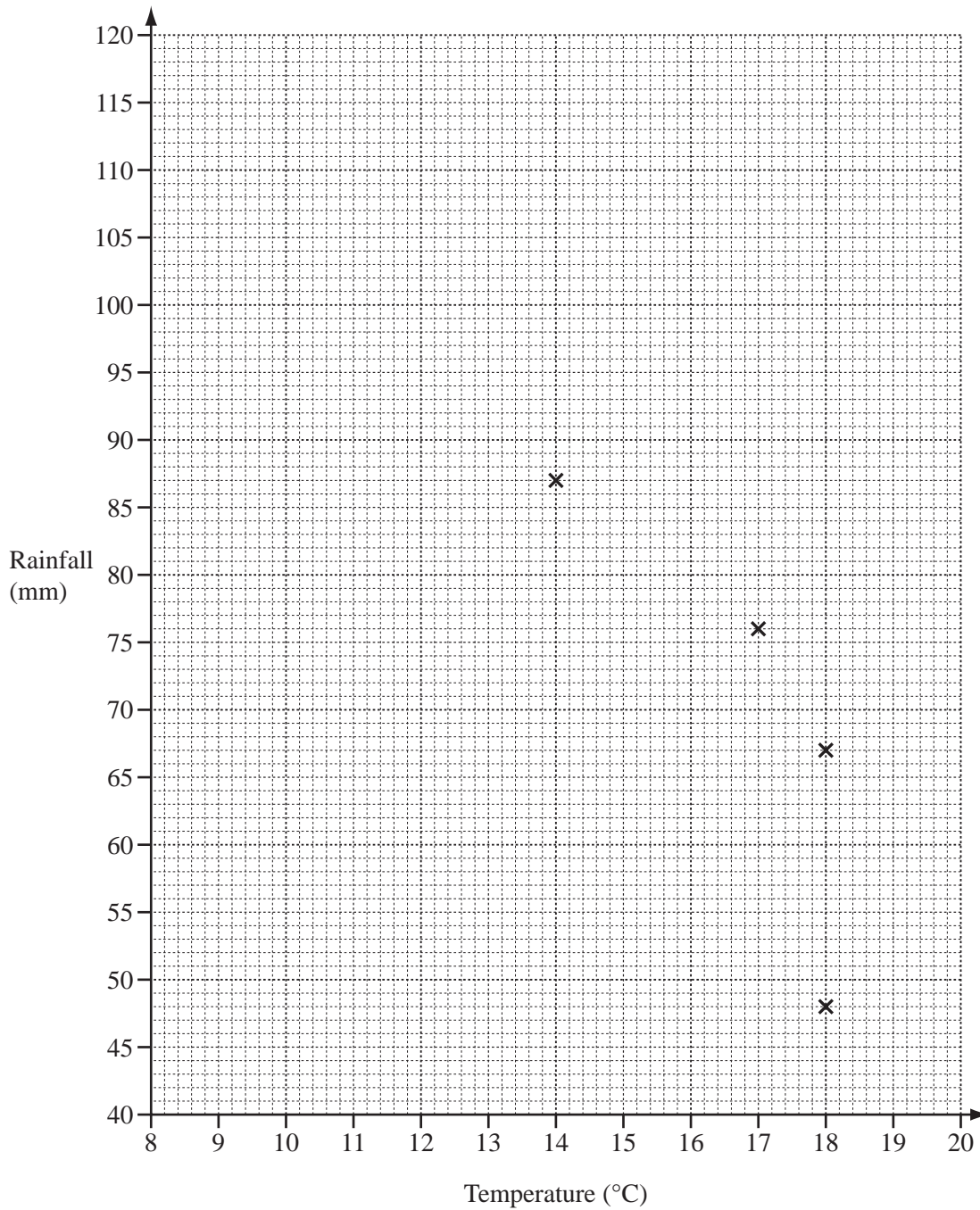
Answer(b)(i) mm [2]

(ii) the median.

Answer(b)(ii) mm [2]

(c) In the scatter diagram the rainfall for January to April is plotted against temperature.

*For
Examiner's
Use*



- (i) Complete the scatter diagram by plotting the values for the months May to December. [3]
- (ii) Draw the line of best fit on the scatter diagram. [1]
- (iii) What type of correlation does the scatter diagram show?

Answer(c)(iii) [1]

- 9 On the scale drawing opposite, point A is a port.
 B and C are two buoys in the sea and L is a lighthouse.

The scale is 1 cm = 3 km.

- (a) A boat leaves port A and follows a straight line course that bisects angle BAC .

Using a straight edge and compasses only, construct the bisector of angle BAC on the scale drawing. [2]

- (b) When the boat reaches a point that is equidistant from B and from C , it changes course.
It then follows a course that is equidistant from B and from C .

- (i) Using a straight edge and compasses only, construct the locus of points that are equidistant from B and from C .

Mark the point P where the boat changes course. [2]

- (ii) Measure the distance AP in centimetres.

Answer(b)(ii) cm [1]

- (iii) Work out the actual distance AP .

Answer(b)(iii) km [1]

- (iv) Measure the **obtuse** angle between the directions of the two courses.

Answer(b)(iv) [1]

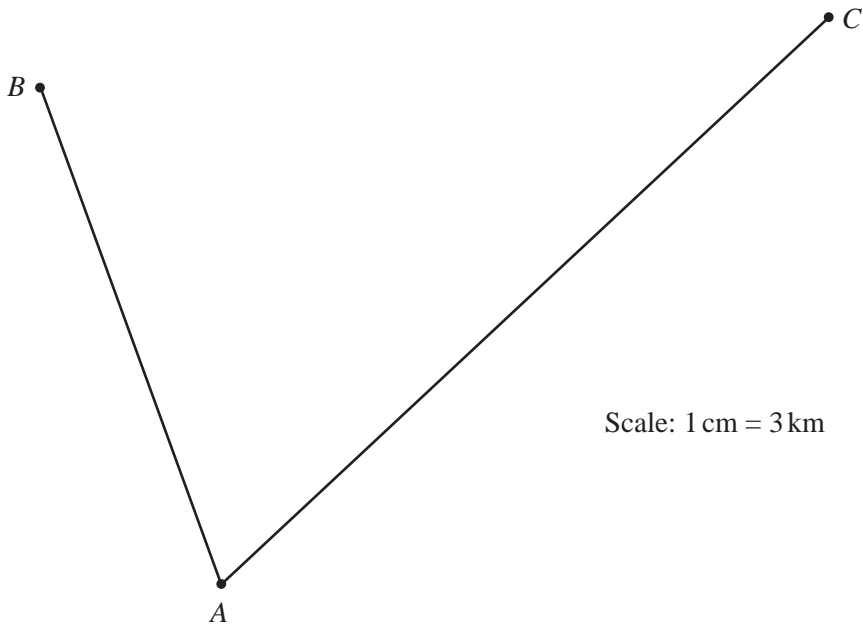
- (c) Boats must be more than 9 kilometres from the lighthouse, L .

- (i) Construct the locus of points that are 9 kilometres from L . [2]

- (ii) Mark the point R where the course of the boat meets this locus.
Work out the actual straight line distance, AR , in kilometres.

Answer(c)(ii) km [1]

L •



Question 10 is printed on the next page.

10 (a) Write down the next term in each of the following sequences.

(i) 2, 9, 16, 23, [1]

(ii) 75, 67, 59, 51, [1]

(iii) 2, 5, 9, 14, [1]

(iv) 2, 1, $\frac{1}{2}$, $\frac{1}{4}$, [1]

(v) 2, 4, 8, 16, [1]

(b) For the sequence in part (a)(i) write down

(i) the 10th term,

Answer(b)(i) [1]

(ii) the n th term.

Answer(b)(ii) [2]

(c) The n th term of the sequence in part (a)(iii) is $\frac{n^2 + 3n}{2}$.

Calculate the 50th term of this sequence.

Answer(c) [2]

(d) The n th term of the sequence in part (a)(v) is 2^n .

Calculate the 12th term of this sequence.

Answer(d) [1]

Permission to reproduce items where third-party owned material protected by copyright is included has been sought and cleared where possible. Every reasonable effort has been made by the publisher (UCLES) to trace copyright holders, but if any items requiring clearance have unwittingly been included, the publisher will be pleased to make amends at the earliest possible opportunity.

University of Cambridge International Examinations is part of the Cambridge Assessment Group. Cambridge Assessment is the brand name of University of Cambridge Local Examinations Syndicate (UCLES), which is itself a department of the University of Cambridge.