

MARK SCHEME for the October/November 2007 question paper

0418 INFORMATION TECHNOLOGY

0418/03

Paper 3 (Practical Test B), maximum raw mark 100

This mark scheme is published as an aid to teachers and candidates, to indicate the requirements of the examination. It shows the basis on which Examiners were instructed to award marks. It does not indicate the details of the discussions that took place at an Examiners' meeting before marking began.

All Examiners are instructed that alternative correct answers and unexpected approaches in candidates' scripts must be given marks that fairly reflect the relevant knowledge and skills demonstrated.

Mark schemes must be read in conjunction with the question papers and the report on the examination.

- CIE will not enter into discussions or correspondence in connection with these mark schemes.

CIE is publishing the mark schemes for the October/November 2007 question papers for most IGCSE, GCE Advanced Level and Advanced Subsidiary Level syllabuses and some Ordinary Level syllabuses.

Candidate name Centre number Candidate number

DCode	Rate	Header	Name and Numbers	1 mark	Type	Count
A	0.045				Cartridge	=COUNTIF(\$A\$7:\$A\$80,G2)
B	0.09	Rate	Data entry 100%	1 mark	Paper	=COUNTIF(\$A\$7:\$A\$80,G3)
C	0.125				Storage	=COUNTIF(\$A\$7:\$A\$80,G4)

Type	Item	Supplier	Code	Sales	Unit Cost	Cost	Discount	Price
Storage	CD-R	Maxell	A	10	=VLOOKUP(D7,N7code.csv!\$A\$2:\$B\$14,2)	=E7*F7	=IF(E7>=30,RateC*G7,IF(E7>=20,RateB*G7,IF(E7>=10,RateA*G7,0)))	=G7-H7
Storage	CD-R	Sony	B	10	=VLOOKUP(D8,N7code.csv!\$A\$2:\$B\$14,2)	=E8*F8	=IF(E8>=30,RateC*G8,IF(E8>=20,RateB*G8,IF(E8>=10,RateA*G8,0)))	=G8-H8
Storage	CD-RW	Sony	E	2	=VLOOKUP(D9,N7code.csv!\$A\$2:\$B\$14,2)	=E9*F9	=IF(E9>=30,RateC*G9,IF(E9>=20,RateB*G9,IF(E9>=10,RateA*G9,0)))	=G9-H9
Paper	P2345	HP	A	30	=VLOOKUP(D10,N7code.csv!\$A\$2:\$B\$14,2)	=E10*F10	=IF(E10>=30,RateC*G10,IF(E10>=20,RateB*G10,IF(E10>=10,RateA*G10,0)))	=G10-H10
Storage	DVD-R	Maxell	H	12	=VLOOKUP(D11,N7code.csv!\$A\$2:\$B\$14,2)	=E11*F11	=IF(E11>=30,RateC*G11,IF(E11>=20,RateB*G11,IF(E11>=10,RateA*G11,0)))	=G11-H11
Cartridge	HP56	HP	H	1	=VLOOKUP(D12,N7code.csv!\$A\$2:\$B\$14,2)	=E12*F12	=IF(E12>=30,RateC*G12,IF(E12>=20,RateB*G12,IF(E12>=10,RateA*G12,0)))	=G12-H12
Storage	CD-R	Sony	B	8	=VLOOKUP(D13,N7code.csv!\$A\$2:\$B\$14,2)	=E13*F13	=IF(E13>=30,RateC*G13,IF(E13>=20,RateB*G13,IF(E13>=10,RateA*G13,0)))	=G13-H13
Cartridge	HP29	HP	J	1	=VLOOKUP(D14,N7code.csv!\$A\$2:\$B\$14,2)	=E14*F14	=IF(E14>=30,RateC*G14,IF(E14>=20,RateB*G14,IF(E14>=10,RateA*G14,0)))	=G14-H14
Cartridge	HP26	HP	I	1	=VLOOKUP(D15,N7code.csv!\$A\$2:\$B\$14,2)	=E15*F15	=IF(E15>=30,RateC*G15,IF(E15>=20,RateB*G15,IF(E15>=10,RateA*G15,0)))	=G15-H15
Cartridge	HP15	HP	I	1	=VLOOKUP(D16,N7code.csv!\$A\$2:\$B\$14,2)	=E16*F16	=IF(E16>=30,RateC*G16,IF(E16>=20,RateB*G16,IF(E16>=10,RateA*G16,0)))	=G16-H16
Storage	DVD-RW	Sony	K	1	=VLOOKUP(D17,N7code.csv!\$A\$2:\$B\$14,2)	=E17*F17	=IF(E17>=30,RateC*G17,IF(E17>=20,RateB*G17,IF(E17>=10,RateA*G17,0)))	=G17-H17
Cartridge	HP15	HP	I	1	=VLOOKUP(D18,N7code.csv!\$A\$2:\$B\$14,2)	=E18*F18	=IF(E18>=30,RateC*G18,IF(E18>=20,RateB*G18,IF(E18>=10,RateA*G18,0)))	=G18-H18
Storage	CD-RW	Imation	D	4	=VLOOKUP(D19,N7code.csv!\$A\$2:\$B\$14,2)	=E19*F19	=IF(E19>=30,RateC*G19,IF(E19>=20,RateB*G19,IF(E19>=10,RateA*G19,0)))	=G19-H19
Paper	P2348	HP	F	1	=VLOOKUP(D20,N7code.csv!\$A\$2:\$B\$14,2)	=E20*F20	=IF(E20>=30,RateC*G20,IF(E20>=20,RateB*G20,IF(E20>=10,RateA*G20,0)))	=G20-H20
Storage	CD-RW	Sony	E	5	=VLOOKUP(D21,N7code.csv!\$A\$2:\$B\$14,2)	=E21*F21	=IF(E21>=30,RateC*G21,IF(E21>=20,RateB*G21,IF(E21>=10,RateA*G21,0)))	=G21-H21
Storage	CD-RW	Sony	E	25	=VLOOKUP(D22,N7code.csv!\$A\$2:\$B\$14,2)	=E22*F22	=IF(E22>=30,RateC*G22,IF(E22>=20,RateB*G22,IF(E22>=10,RateA*G22,0)))	=G22-H22
Cartridge	HP56	HP	H	20	=VLOOKUP(D23,N7code.csv!\$A\$2:\$B\$14,2)	=E23*F23	=IF(E23>=30,RateC*G23,IF(E23>=20,RateB*G23,IF(E23>=10,RateA*G23,0)))	=G23-H23
Paper	P2348	HP	F	1	=VLOOKUP(D24,N7code.csv!\$A\$2:\$B\$14,2)	=E24*F24	=IF(E24>=30,RateC*G24,IF(E24>=20,RateB*G24,IF(E24>=10,RateA*G24,0)))	=G24-H24
Cartridge	BCI-6PY	Amazon	M	12	=VLOOKUP(D25,N7code.csv!\$A\$2:\$B\$14,2)	=E25*F25	=IF(E25>=30,RateC*G25,IF(E25>=20,RateB*G25,IF(E25>=10,RateA*G25,0)))	=G25-H25
Storage	DVD-R	Maxell	H	4	=VLOOKUP(D26,N7code.csv!\$A\$2:\$B\$14,2)	=E26*F26	=IF(E26>=30,RateC*G26,IF(E26>=20,RateB*G26,IF(E26>=10,RateA*G26,0)))	=G26-H26
Storage	DVD-RW	Sony	K	1	=VLOOKUP(D27,N7code.csv!\$A\$2:\$B\$14,2)	=E27*F27	=IF(E27>=30,RateC*G27,IF(E27>=20,RateB*G27,IF(E27>=10,RateA*G27,0)))	=G27-H27
Cartridge	T036120	Amazon	D	5	=VLOOKUP(D28,N7code.csv!\$A\$2:\$B\$14,2)	=E28*F28	=IF(E28>=30,RateC*G28,IF(E28>=20,RateB*G28,IF(E28>=10,RateA*G28,0)))	=G28-H28
Cartridge	HP45	HP	L	12	=VLOOKUP(D29,N7code.csv!\$A\$2:\$B\$14,2)	=E29*F29	=IF(E29>=30,RateC*G29,IF(E29>=20,RateB*G29,IF(E29>=10,RateA*G29,0)))	=G29-H29
Storage	CD-RW	Imation	D	4	=VLOOKUP(D30,N7code.csv!\$A\$2:\$B\$14,2)	=E30*F30	=IF(E30>=30,RateC*G30,IF(E30>=20,RateB*G30,IF(E30>=10,RateA*G30,0)))	=G30-H30
Storage	CD-RW	Sony	E	1	=VLOOKUP(D31,N7code.csv!\$A\$2:\$B\$14,2)	=E31*F31	=IF(E31>=30,RateC*G31,IF(E31>=20,RateB*G31,IF(E31>=10,RateA*G31,0)))	=G31-H31
Cartridge	HP49	HP	I	3	=VLOOKUP(D32,N7code.csv!\$A\$2:\$B\$14,2)	=E32*F32	=IF(E32>=30,RateC*G32,IF(E32>=20,RateB*G32,IF(E32>=10,RateA*G32,0)))	=G32-H32
Cartridge	BCI-24BK	Amazon	B	6	=VLOOKUP(D33,N7code.csv!\$A\$2:\$B\$14,2)	=E33*F33	=IF(E33>=30,RateC*G33,IF(E33>=20,RateB*G33,IF(E33>=10,RateA*G33,0)))	=G33-H33
Storage	CD-RW	Imation	D	24	=VLOOKUP(D34,N7code.csv!\$A\$2:\$B\$14,2)	=E34*F34	=IF(E34>=30,RateC*G34,IF(E34>=20,RateB*G34,IF(E34>=10,RateA*G34,0)))	=G34-H34
Cartridge	BCI-6BK	Amazon	D	3	=VLOOKUP(D35,N7code.csv!\$A\$2:\$B\$14,2)	=E35*F35	=IF(E35>=30,RateC*G35,IF(E35>=20,RateB*G35,IF(E35>=10,RateA*G35,0)))	=G35-H35
Cartridge	T037020	Amazon	E	10	=VLOOKUP(D36,N7code.csv!\$A\$2:\$B\$14,2)	=E36*F36	=IF(E36>=30,RateC*G36,IF(E36>=20,RateB*G36,IF(E36>=10,RateA*G36,0)))	=G36-H36
Storage	CD-RW	Sony	E	10	=VLOOKUP(D37,N7code.csv!\$A\$2:\$B\$14,2)	=E37*F37	=IF(E37>=30,RateC*G37,IF(E37>=20,RateB*G37,IF(E37>=10,RateA*G37,0)))	=G37-H37
Cartridge	Orientation	Landscap			=VLOOKUP(D38,N7code.csv!\$A\$2:\$B\$14,2)	=E38*F38	=IF(E38>=30,RateC*G38,IF(E38>=20,RateB*G38,IF(E38>=10,RateA*G38,0)))	=G38-H38
Cartridge	Orientation	Landscap			=VLOOKUP(D39,N7code.csv!\$A\$2:\$B\$14,2)	=E39*F39	=IF(E39>=30,RateC*G39,IF(E39>=20,RateB*G39,IF(E39>=10,RateA*G39,0)))	=G39-H39
Storage	CD-RW	Sony	E	10	=VLOOKUP(D40,N7code.csv!\$A\$2:\$B\$14,2)	=E40*F40	=IF(E40>=30,RateC*G40,IF(E40>=20,RateB*G40,IF(E40>=10,RateA*G40,0)))	=G40-H40
Paper	P2354	HP	B	10	=VLOOKUP(D41,N7code.csv!\$A\$2:\$B\$14,2)	=E41*F41	=IF(E41>=30,RateC*G41,IF(E41>=20,RateB*G41,IF(E41>=10,RateA*G41,0)))	=G41-H41

Page 3	Mark Scheme			Syllabus	Paper
	IGCSE – October/November 2007			0418	03

				Candidate name	Centre number	Candidate number		
Paper	P2346	HP	C	15	=VLOOKUP(D42,N7code.csv!\$A\$2:\$B\$14,2)	=E42*F42	=IF(E42>=30,RateC*G42,IF(E42>=20,RateB*G42,IF(E42>=10,RateA*G42,0)))	=G42-H42
Storage	CD-RW	Sony	E	12	=VLOOKUP(D43,N7code.csv!\$A\$2:\$B\$14,2)	=E43*F43	=IF(E43>=30,RateC*G43,IF(E43>=20,RateB*G43,IF(E43>=10,RateA*G43,0)))	=G43-H43
Paper	P2352	HP	A	4	=VLOOKUP(D44,N7code.csv!\$A\$2:\$B\$14,2)	=E44*F44	=IF(E44>=30,RateC*G44,IF(E44>=20,RateB*G44,IF(E44>=10,RateA*G44,0)))	=G44-H44
Cartridge	HP200	HP	I	6	=VLOOKUP(D45,N7code.csv!\$A\$2:\$B\$14,2)	=E45*F45	=IF(E45>=30,RateC*G45,IF(E45>=20,RateB*G45,IF(E45>=10,RateA*G45,0)))	=G45-H45
Cartridge	T037020	Amazon	E	20	=VLOOKUP(D46,N7code.csv!\$A\$2:\$B\$14,2)	=E46*F46	=IF(E46>=30,RateC*G46,IF(E46>=20,RateB*G46,IF(E46>=10,RateA*G46,0)))	=G46-H46
Storage	DVD-RW	Sony	K	6	=VLOOKUP(D47,N7code.csv!\$A\$2:\$B\$14,2)	=E47*F47	=IF(E47>=30,RateC*G47,IF(E47>=20,RateB*G47,IF(E47>=10,RateA*G47,0)))	=G47-H47
Paper	P2351	HP	D	8	=VLOOKUP(D48,N7code.csv!\$A\$2:\$B\$14,2)	=E48*F48	=IF(E48>=30,RateC*G48,IF(E48>=20,RateB*G48,IF(E48>=10,RateA*G48,0)))	=G48-H48
Paper	P2356	HP	C	2	=VLOOKUP(D49,N7code.csv!\$A\$2:\$B\$14,2)	=E49*F49	=IF(E49>=30,RateC*G49,IF(E49>=20,RateB*G49,IF(E49>=10,RateA*G49,0)))	=G49-H49
Paper	P2346	HP	C	10	=VLOOKUP(D50,N7code.csv!\$A\$2:\$B\$14,2)	=E50*F50	=IF(E50>=30,RateC*G50,IF(E50>=20,RateB*G50,IF(E50>=10,RateA*G50,0)))	=G50-H50
Storage	CD-RW	Sony	E	10	=VLOOKUP(D51,N7code.csv!\$A\$2:\$B\$14,2)	=E51*F51	=IF(E51>=30,RateC*G51,IF(E51>=20,RateB*G51,IF(E51>=10,RateA*G51,0)))	=G51-H51
Cartridge	BCI-6BK	Amazon	D	2	=VLOOKUP(D52,N7code.csv!\$A\$2:\$B\$14,2)	=E52*F52	=IF(E52>=30,RateC*G52,IF(E52>=20,RateB*G52,IF(E52>=10,RateA*G52,0)))	=G52-H52
Cartridge	BCI-6C	Amazon	D	2	=VLOOKUP(D53,N7code.csv!\$A\$2:\$B\$14,2)	=E53*F53	=IF(E53>=30,RateC*G53,IF(E53>=20,RateB*G53,IF(E53>=10,RateA*G53,0)))	=G53-H53
Cartridge	BCI-6M	Amazon	D	2	=VLOOKUP(D54,N7code.csv!\$A\$2:\$B\$14,2)	=E54*F54	=IF(E54>=30,RateC*G54,IF(E54>=20,RateB*G54,IF(E54>=10,RateA*G54,0)))	=G54-H54
Cartridge	BCI-6Y	Amazon	D	2	=VLOOKUP(D55,N7code.csv!\$A\$2:\$B\$14,2)	=E55*F55	=IF(E55>=30,RateC*G55,IF(E55>=20,RateB*G55,IF(E55>=10,RateA*G55,0)))	=G55-H55
Paper	P2356	HP	C	10	=VLOOKUP(D56,N7code.csv!\$A\$2:\$B\$14,2)	=E56*F56	=IF(E56>=30,RateC*G56,IF(E56>=20,RateB*G56,IF(E56>=10,RateA*G56,0)))	=G56-H56
Storage	CD-RW	Imation	D	12	=VLOOKUP(D57,N7code.csv!\$A\$2:\$B\$14,2)	=E57*F57	=IF(E57>=30,RateC*G57,IF(E57>=20,RateB*G57,IF(E57>=10,RateA*G57,0)))	=G57-H57
Paper	P2347	HP	D	2	=VLOOKUP(D58,N7code.csv!\$A\$2:\$B\$14,2)	=E58*F58	=IF(E58>=30,RateC*G58,IF(E58>=20,RateB*G58,IF(E58>=10,RateA*G58,0)))	=G58-H58
Paper	P2351	HP	D	8	=VLOOKUP(D59,N7code.csv!\$A\$2:\$B\$14,2)	=E59*F59	=IF(E59>=30,RateC*G59,IF(E59>=20,RateB*G59,IF(E59>=10,RateA*G59,0)))	=G59-H59
Storage	CD-RW	Sony	E	1	=VLOOKUP(D60,N7code.csv!\$A\$2:\$B\$14,2)	=E60*F60	=IF(E60>=30,RateC*G60,IF(E60>=20,RateB*G60,IF(E60>=10,RateA*G60,0)))	=G60-H60
Storage	DVD-RW	Sony	K	1	=VLOOKUP(D61,N7code.csv!\$A\$2:\$B\$14,2)	=E61*F61	=IF(E61>=30,RateC*G61,IF(E61>=20,RateB*G61,IF(E61>=10,RateA*G61,0)))	=G61-H61
Cartridge	BCI-6PBK	Amazon	F	4	=VLOOKUP(D62,N7code.csv!\$A\$2:\$B\$14,2)	=E62*F62	=IF(E62>=30,RateC*G62,IF(E62>=20,RateB*G62,IF(E62>=10,RateA*G62,0)))	=G62-H62
Cartridge	HP23	HP	K	10	=VLOOKUP(D63,N7code.csv!\$A\$2:\$B\$14,2)	=E63*F63	=IF(E63>=30,RateC*G63,IF(E63>=20,RateB*G63,IF(E63>=10,RateA*G63,0)))	=G63-H63
Storage	CD-RW	Imation	D	12	=VLOOKUP(D64,N7code.csv!\$A\$2:\$B\$14,2)	=E64*F64	=IF(E64>=30,RateC*G64,IF(E64>=20,RateB*G64,IF(E64>=10,RateA*G64,0)))	=G64-H64
Storage	CD-RW	Sony	E	1	=VLOOKUP(D65,N7code.csv!\$A\$2:\$B\$14,2)	=E65*F65	=IF(E65>=30,RateC*G65,IF(E65>=20,RateB*G65,IF(E65>=10,RateA*G65,0)))	=G65-H65
Cartridge	BCI-6BK	Amazon	D	4	=VLOOKUP(D66,N7code.csv!\$A\$2:\$B\$14,2)	=E66*F66	=IF(E66>=30,RateC*G66,IF(E66>=20,RateB*G66,IF(E66>=10,RateA*G66,0)))	=G66-H66
Paper	P2352	HP	A	5	=VLOOKUP(D67,N7code.csv!\$A\$2:\$B\$14,2)	=E67*F67	=IF(E67>=30,RateC*G67,IF(E67>=20,RateB*G67,IF(E67>=10,RateA*G67,0)))	=G67-H67
Paper	P2353	HP	A	10	=VLOOKUP(D68,N7code.csv!\$A\$2:\$B\$14,2)	=E68*F68	=IF(E68>=30,RateC*G68,IF(E68>=20,RateB*G68,IF(E68>=10,RateA*G68,0)))	=G68-H68
Paper	P2351	HP	D	5	=VLOOKUP(D69,N7code.csv!\$A\$2:\$B\$14,2)	=E69*F69	=IF(E69>=30,RateC*G69,IF(E69>=20,RateB*G69,IF(E69>=10,RateA*G69,0)))	=G69-H69
Paper	P2352	HP	A	1	=VLOOKUP(D70,N7code.csv!\$A\$2:\$B\$14,2)	=E70*F70	=IF(E70>=30,RateC*G70,IF(E70>=20,RateB*G70,IF(E70>=10,RateA*G70,0)))	=G70-H70
Storage	CD-RW	Sony	E	2	=VLOOKUP(D71,N7code.csv!\$A\$2:\$B\$14,2)	=E71*F71	=IF(E71>=30,RateC*G71,IF(E71>=20,RateB*G71,IF(E71>=10,RateA*G71,0)))	=G71-H71
Storage	CD-RW	Sony	E	10	=VLOOKUP(D72,N7code.csv!\$A\$2:\$B\$14,2)	=E72*F72	=IF(E72>=30,RateC*G72,IF(E72>=20,RateB*G72,IF(E72>=10,RateA*G72,0)))	=G72-H72
Cartridge	HP23	HP	K	6	=VLOOKUP(D73,N7code.csv!\$A\$2:\$B\$14,2)	=E73*F73	=IF(E73>=30,RateC*G73,IF(E73>=20,RateB*G73,IF(E73>=10,RateA*G73,0)))	=G73-H73
Cartridge	T041020	Amazon	E	2	=VLOOKUP(D74,N7code.csv!\$A\$2:\$B\$14,2)	=E74*F74	=IF(E74>=30,RateC*G74,IF(E74>=20,RateB*G74,IF(E74>=10,RateA*G74,0)))	=G74-H74
Cartridge	T042220	Amazon	F	10	=VLOOKUP(D75,N7code.csv!\$A\$2:\$B\$14,2)	=E75*F75	=IF(E75>=30,RateC*G75,IF(E75>=20,RateB*G75,IF(E75>=10,RateA*G75,0)))	=G75-H75
Storage	CD-RW	Sony	E	3	=VLOOKUP(D76,N7code.csv!\$A\$2:\$B\$14,2)	=E76*F76	=IF(E76>=30,RateC*G76,IF(E76>=20,RateB*G76,IF(E76>=10,RateA*G76,0)))	=G76-H76
Cartridge	BCI-6BK	Amazon	D	1	=VLOOKUP(D77,N7code.csv!\$A\$2:\$B\$14,2)	=E77*F77	=IF(E77>=30,RateC*G77,IF(E77>=20,RateB*G77,IF(E77>=10,RateA*G77,0)))	=G77-H77
Paper	P2346	HP	C	30	=VLOOKUP(D78,N7code.csv!\$A\$2:\$B\$14,2)	=E78*F78	=IF(E78>=30,RateC*G78,IF(E78>=20,RateB*G78,IF(E78>=10,RateA*G78,0)))	=G78-H78
Paper	P2352	HP	A	1	=VLOOKUP(D79,N7code.csv!\$A\$2:\$B\$14,2)	=E79*F79	=IF(E79>=30,RateC*G79,IF(E79>=20,RateB*G79,IF(E79>=10,RateA*G79,0)))	=G79-H79
Storage	CD-RW	Imation	D	2	=VLOOKUP(D80,N7code.csv!\$A\$2:\$B\$14,2)	=E80*F80	=IF(E80>=30,RateC*G80,IF(E80>=20,RateB*G80,IF(E80>=10,RateA*G80,0)))	=G80-H80

Page 4	Mark Scheme	Syllabus	Paper
	IGCSE – October/November 2007	0418	03

Rate Odp & % values 1 mark Centre number Candidate number

DCode	Rate	Type	Count
A	5%	Cartridge	28
B	9%	Paper	18
C	13%	Storage	28

Type	Item	Supplier	Code	Sales	Unit Cost	Cost	Discount	Price
Storage	CD-R	Maxell	A	10	£2.79	£27.90	£1.26	£26.64
Storage	CD-R	Sony	B	10	£2.90	£29.00	£1.35	£28.55
Storage	CD-RW	Sony	E	2	£9.58	£19.16	£0.00	£9.58
Paper	P2345	HP	A	20	£3.70	£74.00	£10.46	£73.24
Storage	DVD-R	M					£4.31	£91.57
Cartridge	HP56	H					£0.00	£7.99
Storage	CD-R	Sony	B	8	£2.99	£23.92	£0.00	£23.92
Cartridge	HP29	HP	J	1	£8.79	£8.79	£0.00	£8.79
Cartridge	HP26	HP	I	6	£8.29	£49.74	£0.00	£49.74
Cartridge	HP15	HP	L	6	£9.29	£55.74	£0.00	£55.74
Storage	DVD-RW	Sony	K	1	£8.99	£8.99	£0.00	£8.99
Cartridge	HP15	HP	L	2	£9.29	£18.58	£0.00	£18.58
Storage	CD-RW	Imation	D	12	£4.49	£53.88	£2.42	£51.46
Paper	P2348	HP	F	8	£4.99	£39.92	£0.00	£39.92
Storage	CD-RW	Sony	E	5	£4.79	£23.95	£0.00	£23.95
Storage	CD-RW	Sony	E	25	£4.79	£119.75	£10.78	£108.97
Cartridge	HP56	HP	H	20	£7.99	£159.80	£14.38	£145.42
Paper	P2348	HP	F	1	£4.99	£4.99	£0.00	£4.99
Cartridge	BCI-6PY	Amazon	M	12	£5.49	£65.88	£2.96	£62.92
Storage	DVD-R	Maxell	H	4	£7.99	£31.96	£0.00	£31.96
Storage	DVD-RW	Sony	K	1	£8.99	£8.99	£0.00	£8.99
Cartridge	T036120	Amazon	D	5	£4.49	£22.45	£0.00	£22.45
Cartridge	HP45	HP	L	12	£9.29	£111.48	£5.02	£106.46
Storage	CD-RW	Imation	D	4	£4.49	£17.96	£0.00	£17.96
Storage	CD-RW	Sony	E	1	£4.79	£4.79	£0.00	£4.79
Cartridge	HP49	HP	I	3	£8.29	£24.87	£0.00	£24.87
Cartridge	BCI-24BK	Amazon	B	6	£2.99	£17.94	£0.00	£17.94
Storage	CD-RW	Imation	D	24	£4.49	£107.76	£9.70	£98.06
Cartridge	BCI-6BK	Amazon	D	3	£4.49	£13.47	£0.00	£13.47
Cartridge	T037020	Amazon	E	10	£4.79	£47.90	£2.16	£45.74
Storage	CD-RW	Sony	E	12	£4.79	£57.48	£2.59	£54.89
Cartridge	BCI-6PC	Amazon	M	1	£5.49	£5.49	£0.00	£5.49
Cartridge	BCI-6PM	Amazon	M	1	£5.49	£5.49	£0.00	£5.49
Storage	CD-RW	Sony	E	10	£4.79	£47.90	£2.16	£45.74
Paper	P2354	HP	B	10	£2.99	£29.90	£1.35	£28.55
Paper	P2346	HP	C	15	£3.29	£49.35	£2.22	£47.13
Storage	CD-RW	Sony	E	12	£4.79	£57.48	£2.59	£54.89
Paper	P2352	HP	A	4	£2.79	£11.16	£0.00	£11.16
Cartridge	HP200	HP	I	6	£8.29	£49.74	£0.00	£49.74
Cartridge	T037020	Amazon	E	20	£4.79	£95.80	£8.62	£87.18
Storage	DVD-RW	Sony	K	6	£8.99	£53.94	£0.00	£53.94
Paper	P2351	HP	D	8	£4.49	£35.92	£0.00	£35.92
Paper	P2356	HP	C	2	£3.29	£6.58	£0.00	£6.58
Paper	P2346	HP	C	10	£3.29	£32.90	£1.48	£31.42
Storage	CD-RW	Sony	E	10	£4.79	£47.90	£2.16	£45.74
Cartridge	BCI-6BK	Amazon	D	2	£4.49	£8.98	£0.00	£8.98
Cartridge	BCI-6C	Amazon	D	2	£4.49	£8.98	£0.00	£8.98
Cartridge	BCI-6M	Amazon	D	2	£4.49	£8.98	£0.00	£8.98
Cartridge	BCI-6Y	Amazon	D	2	£4.49	£8.98	£0.00	£8.98

Page 5	Mark Scheme				Syllabus	Paper
	IGCSE – October/November 2007				0418	03

		Candidate name		Centre number	Candidate number			
Paper	P2356	HP	C	10	£3.29	£32.90	£1.48	£31.42
Storage	CD-RW	Imation	D	12	£4.49	£53.88	£2.42	£51.46
Paper	P2347	HP	D	2	£4.49	£8.98	£0.00	£8.98
Paper	P2351	HP	D	8	£4.49	£35.92	£0.00	£35.92
Storage	CD-RW	Sony	E	1	£4.79	£4.79	£0.00	£4.79
Storage	DVD-RW	Sony	K	1	£8.99	£8.99	£0.00	£8.99
Cartridge	BCI-6PBK	Amazon	F	4	£4.99	£19.96	£0.00	£19.96
Cartridge	HP23	HP	K	10	£8.99	£89.90	£4.05	£85.85
Storage	CD-RW	Imation	D	12	£4.49	£53.88	£2.42	£51.46
Storage	CD-RW	Sony	E	1	£4.79	£4.79	£0.00	£4.79
Cartridge	BCI-6BK	Amazon	D	4	£4.49	£17.96	£0.00	£17.96
Paper	P2352	HP	A	5	£2.79	£13.95	£0.00	£13.95
Paper	P2353	HP	A	10	£2.79	£27.90	£1.26	£26.64
Paper	P2351	HP	D	5	£4.49	£22.45	£0.00	£22.45
Paper	P2352	HP	A	1	£2.79	£2.79	£0.00	£2.79
Storage	CD-RW	Sony	E	2	£4.79	£9.58	£0.00	£9.58
Storage	CD-RW	Sony	E	10	£4.79	£47.90	£2.16	£45.74
Cartridge	HP23	HP	K	6	£8.99	£53.94	£0.00	£53.94
Cartridge	T041020	Amazon	E	2	£4.79	£9.58	£0.00	£9.58
Cartridge	T042220	Amazon	F	10	£4.99	£49.90	£2.25	£47.65
Storage	CD-RW	Sony	E	3	£4.79	£14.37	£0.00	£14.37
Cartridge	BCI-6BK	Amazon	D	1	£4.49	£4.49	£0.00	£4.49
Paper	P2346	HP	C	30	£3.29	£98.70	£12.34	£86.36
Paper	P2352	HP	A	1	£2.79	£2.79	£0.00	£2.79
Storage	CD-RW	Imation	D	2	£4.49	£8.98	£0.00	£8.98

Candidate name Centre number Candidate number

Step 16

Item	Supplier	Sales	Price
CD-R	Maxell	10	£26.64
DVD-R	Maxell	12	£91.57
DVD-R	Maxell	4	£31.96

Hidden	Rows 1-5	1 mark
Columns	A, D, F, G, H	1 mark
Search	Supplier = Maxell	2 marks

Candidate name Centre number Candidate number

Step 17

Item	Supplier	Sales	Price
P2345	HP	30	£73.24
CD-RW	Imation	24	£98.06
T037020	Amazon	20	£87.18
P2346	HP	30	£86.36

Search	Sales >=20 AND Price < 100	2 marks
--------	----------------------------	---------

Colour	all correct	1 mark
Font	all correct	1 mark
Size	all correct	1 mark
	correct units	1 mark
Alignment	all correct	1 mark
h3	bold	1 mark

STYLESHEET

h1	{ color: #000000; font-family: Times New Roman, serif; font-size:36pt; text-align: Center }
h2	{ color: #000000; font-family: Times New Roman, serif; font-size: 18pt; text-align: Center }
h3	{ color: #FF0000; font-family: Arial, sans-serif; font-size: 12pt; text-align: center; font-weight: bold }
h4	{ color: #FF0000; font-family: Arial, sans-serif; font-size: 12pt; text-align: left }
li	{ color: #FF0000; font-family: Arial, sans-serif; font-size: 10pt; text-align: left }
p	{ color: #800000; font-family: Arial, sans-serif; font-size: 10pt; text-align: left }

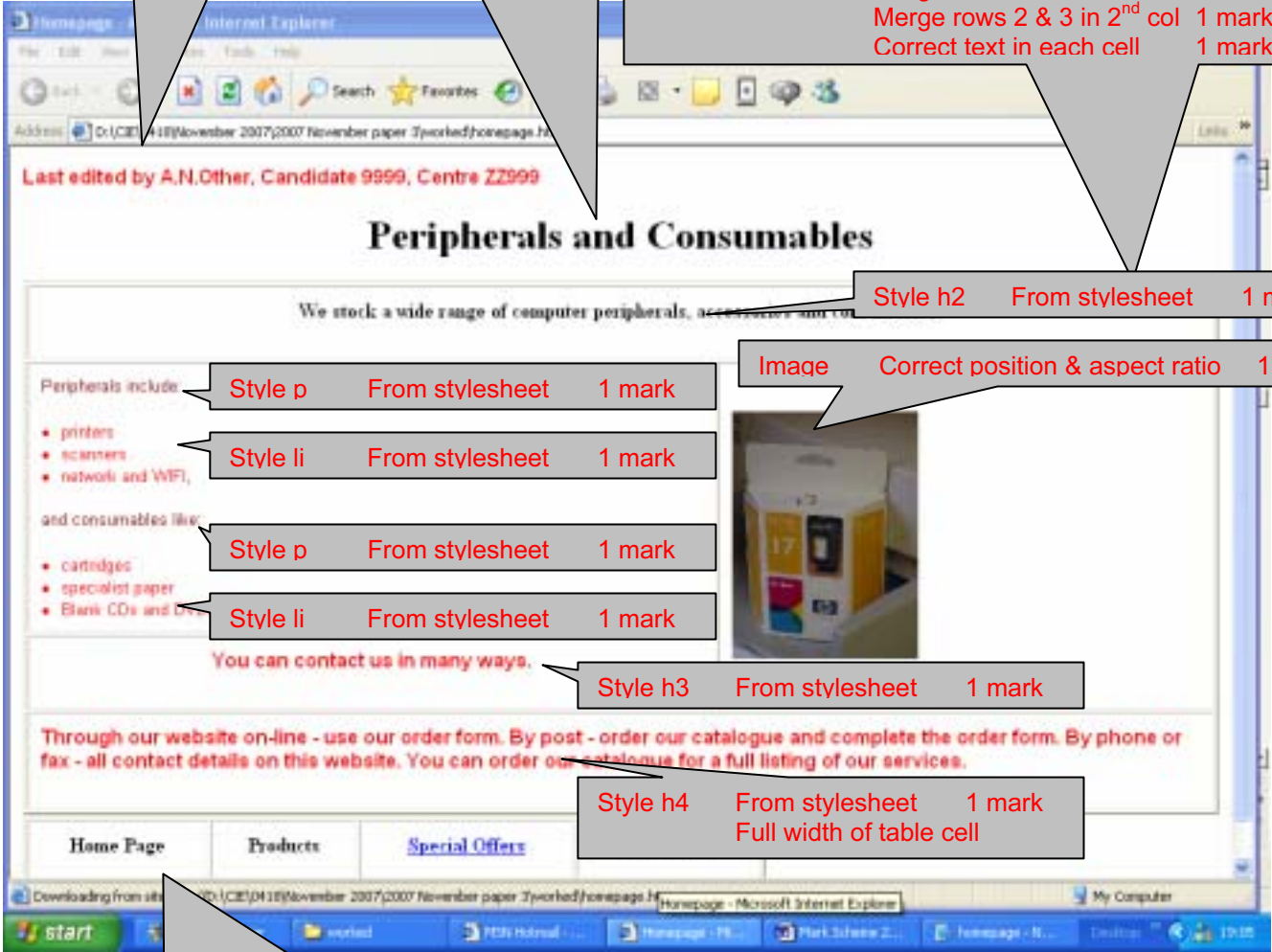
Candidate name Centre number Candidate number

Candidate name Centre number Candidate number

Top left Last edited by & NAME & No's in style h4 1 mark
 1 mark

style h1 From stylesheet 100% correct 1 mark

Table 4 rows & 2 columns 1 mark
 Merge cells in row 1 1 mark
 Merge cells in row 4 1 mark
 Merge rows 2 & 3 in 2nd col 1 mark
 Correct text in each cell 1 mark



Style h2 From stylesheet 1 mark

Image Correct position & aspect ratio 1 mark

Style p From stylesheet 1 mark

Style li From stylesheet 1 mark

Style p From stylesheet 1 mark

Style li From stylesheet 1 mark

Style h3 From stylesheet 1 mark

Style h4 From stylesheet 1 mark
 Full width of table cell

Menu Contains N7Menu.TXT in style h2 1 mark

<HTML>

External stylesheet attached 1 mark

<HEAD>

<TITLE>Homepage</TITLE>

<link rel="stylesheet" type="text/css" href="styles.css">

</HEAD>

<BODY>

<h4>Last edited by A.N.Other, Candidate 9999,</h4>

<h1>Peripherals and Consumables</h1>

Table	Cell padding 10	1 mark
	Cell spacing 2	1 mark
	Border 2	1 mark
	Width 100%	1 mark

<TABLE cellSpacing="2" cellPadding="10" width="100%" border="2">

<TR>

<TD colspan="2"><h2>We stock a wide range of computer peripherals, accessories and consumables.</h2></TD>

</TR>

<TR>

<TD><p>Peripherals include:</p>

printers

scanners

network and WIFI,

<p>and consumables like:</p>

cartridges

specialist paper

Blank CDs and DVDs.</TD>

Image Height = "200" 1 mark

<TD rowspan="2"></TD>

</TR>

<TR>

<TD><h3>You can contact us in many ways.</h3></TD>

</TR>

<TR>

<TD colspan="2"><h4>Through our website on-line - use our order form. By post - order our catalogue and complete the order form. By phone - order our catalogue for a full listing of our services.</h4></TD>

Table	Cell padding 10	1 mark
	Cell spacing 2	1 mark
	Width "600"	1 mark
	Border = 2	1 mark

</TR>

</TABLE>

<TABLE cellSpacing="2" cellPadding="10" width="600" border="2">

<TBODY>

<TR>

<TD><h2>Home Page</h2></TD>

<TD><h2>Products</h2></TD>

<TD><h2>Special Offers</h2></TD>

<TD><h2>Order Form</h2></TD>

</TR>

</TBODY>

Hyperlink Correct target window 1 mark

</TABLE>

</BODY>

</HTML>

Page 8	Mark Scheme	Syllabus	Paper
	IGCSE – October/November 2007	0418	03

Candidate name Centre number Candidate number

Top left NAME & No's 1 mark

Image In this cell 1 mark

Image Replaced text 1 mark

```

<html>
<head>
  <title>Special Offers Page</title>
  <link rel="stylesheet" type="text/css" href="styles.css">
</head>

<body>
<p>Last updated by A.N.Other, Candidate 9999, Centre ZZ999</p>
<h1>This weeks special offers!</h1>

<table border="0" cellpadding="10" cellspacing="10" width="800" height="300">
  <tr>
    <td width="220" height="300">
      <h4><b>On writeable and rewritable media</b></h4>
      <p>Each listed is a 10 pack:</p>
      <li>CD-R Maxell £2.79</li>
      <li>CD-R Sony £2.99</li>
      <li>CD-RW Imation £4.49</li>
      <li>DVD-R Maxell £7.99</li>
    </td>
  </tr>
</table>

```

External stylesheet attached 1 mark

Page 9	Mark Scheme	Syllabus	Paper
	IGCSE – October/November 2007	0418	03

Candidate name Centre number Candidate number

DVD-RW Sony £8.99

<h3>We offer many more exciting deals including daily SPECIAL OFFERS</h3>

<p>Please ring our sales staff for details</p>

</td>

<td>

Image	Width 300	1 mark
-------	-----------	--------

</td>

</tr>

</table>

<p>Click on the logo for the homepage</p>

<a>

</body>

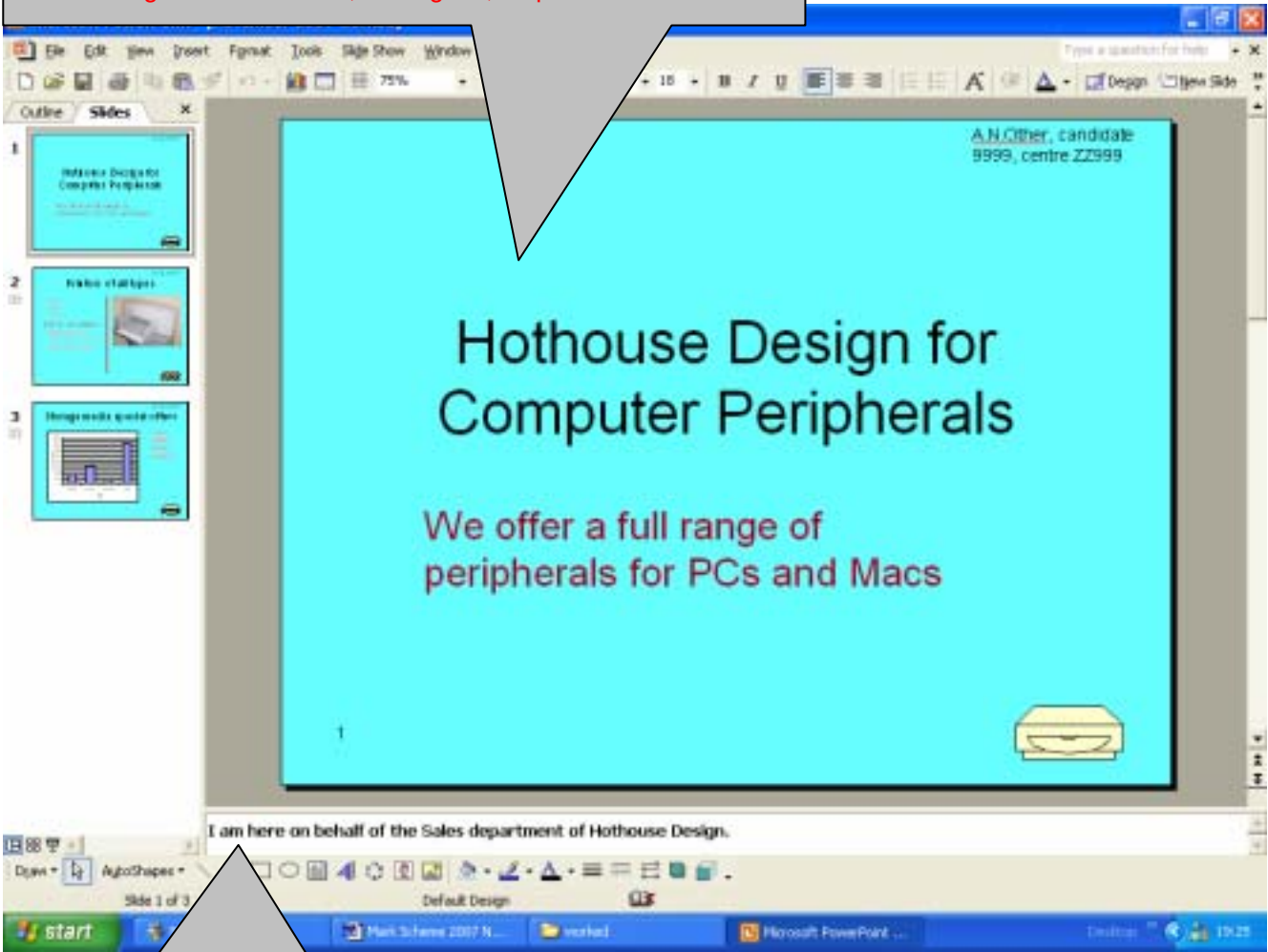
</html>

Image	Gif format, Width 40 & Height 42	1 mark
	Correct Hyperlink	1 mark

Page 10	Mark Scheme	Syllabus	Paper
	IGCSE – October/November 2007	0418	03

Candidate name Centre number Candidate number

Heading	Black, centre aligned, 48 point	1 mark
Subheading	Dark red, left aligned, 32 point	1 mark



Presenter notes	on all slides	1 mark
	100 % Correct	1 mark
	right place	1 mark

Master slide - CHECK CONSISTENCY		
Logo	Peripheral, bottom right	1 mark
Page numbering	Bottom left & automated	1 mark
Name and date	Top right	1 mark
All 3	Not overlapping text or object	1 mark

Page 11	Mark Scheme	Syllabus	Paper
	IGCSE – October/November 2007	0418	03

Candidate name Centre number Candidate number

Heading	Black, centre aligned, 48 point	1 mark
Top Bullets	Red, left aligned, 24 point, consistent	1 mark
Subheading	Dark red, left aligned 32 point	1 mark
2 nd Bullets	Red, left aligned, 24 point, consistent	1 mark

The screenshot shows a PowerPoint slide with a light blue background. The title 'Printers of all types' is centered at the top in black. Below the title is a bulleted list: 'Ink Jet', 'Laser', and 'Thermal'. A subheading 'and for all budgets:' is followed by another bulleted list: 'Budget from £99', 'Home office from £199', and 'Network from £459'. On the right side of the slide is a photograph of a white printer. A vertical red line is positioned to the left of the printer image. At the bottom right of the slide is a small yellow printer icon. The slide number '2' is in the bottom left corner. The footer text reads 'All the latest printer technologies are available.' The Windows taskbar at the bottom shows 'start', 'MSN Messenger', and the time '19:28'.

Image	N7PRINT.jpg on right side	1 mark
	No overlap	1 mark
Line	5 pt, red	1 mark
	vertical	1 mark

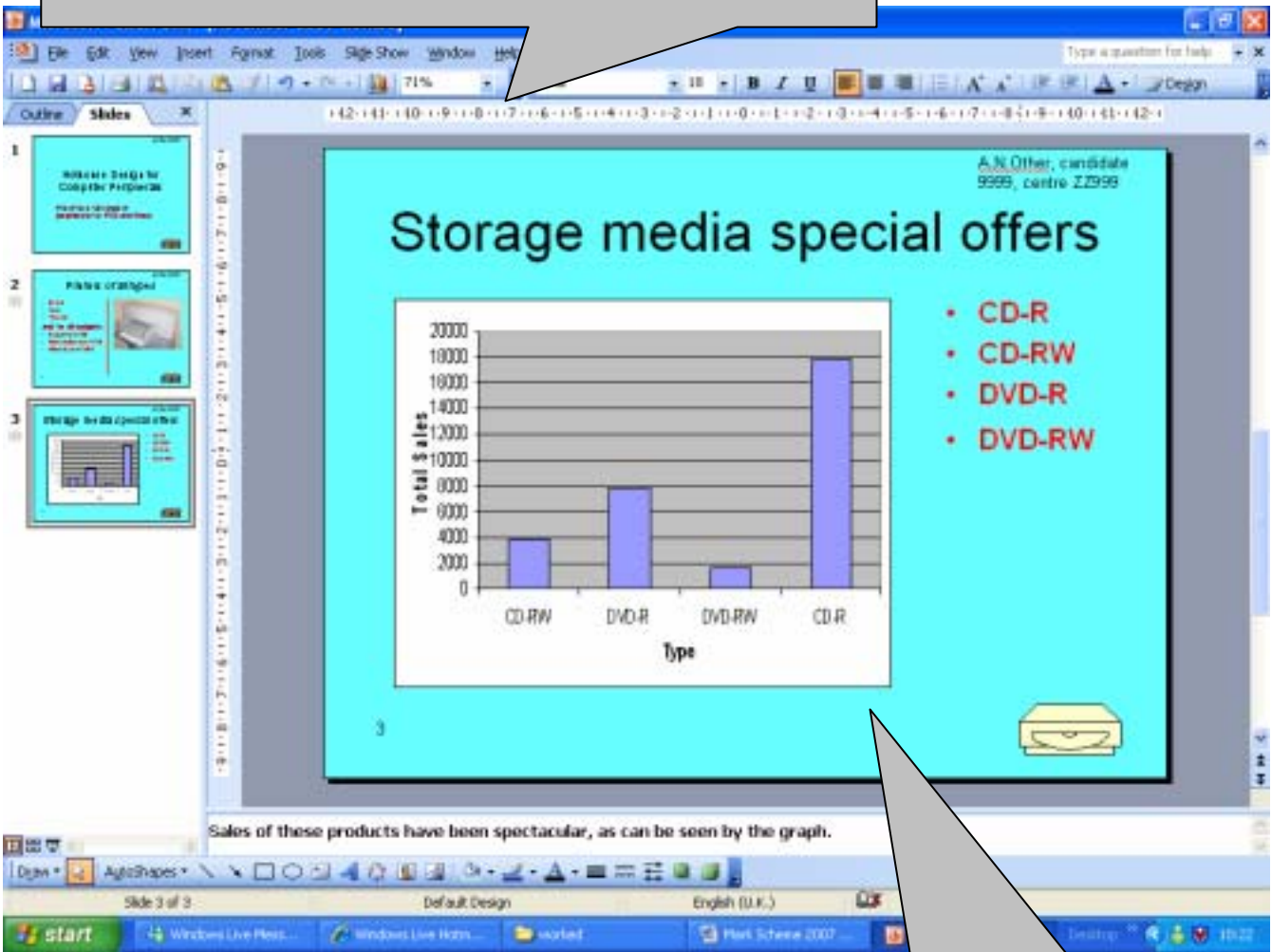
Page 12	Mark Scheme	Syllabus	Paper
	IGCSE – October/November 2007	0418	03

Heading
Bullets

Black, centre aligned, 48 point
Red, left aligned, 24 point, consistent
Consistent with slide 2

1 mark
1 mark
1 mark

ate number



Chart

Correct chart
Type names visible
Type & Total Sales labels
Left side & bullets right side

1 mark
1 mark
1 mark
1 mark

Candidate name Centre number Candidate number

Audience notes Printed with space to annotate 1 mark
 3 / slide 1 mark

Hothouse Design for Computer Peripherals

We offer a full range of peripherals for PCs and Macs



Printers of all types

- Inkjet
- Laser
- Thermal

and for all budgets:

- Budget from £50
- Compact for £100
- Network from £200




Storage media special offers



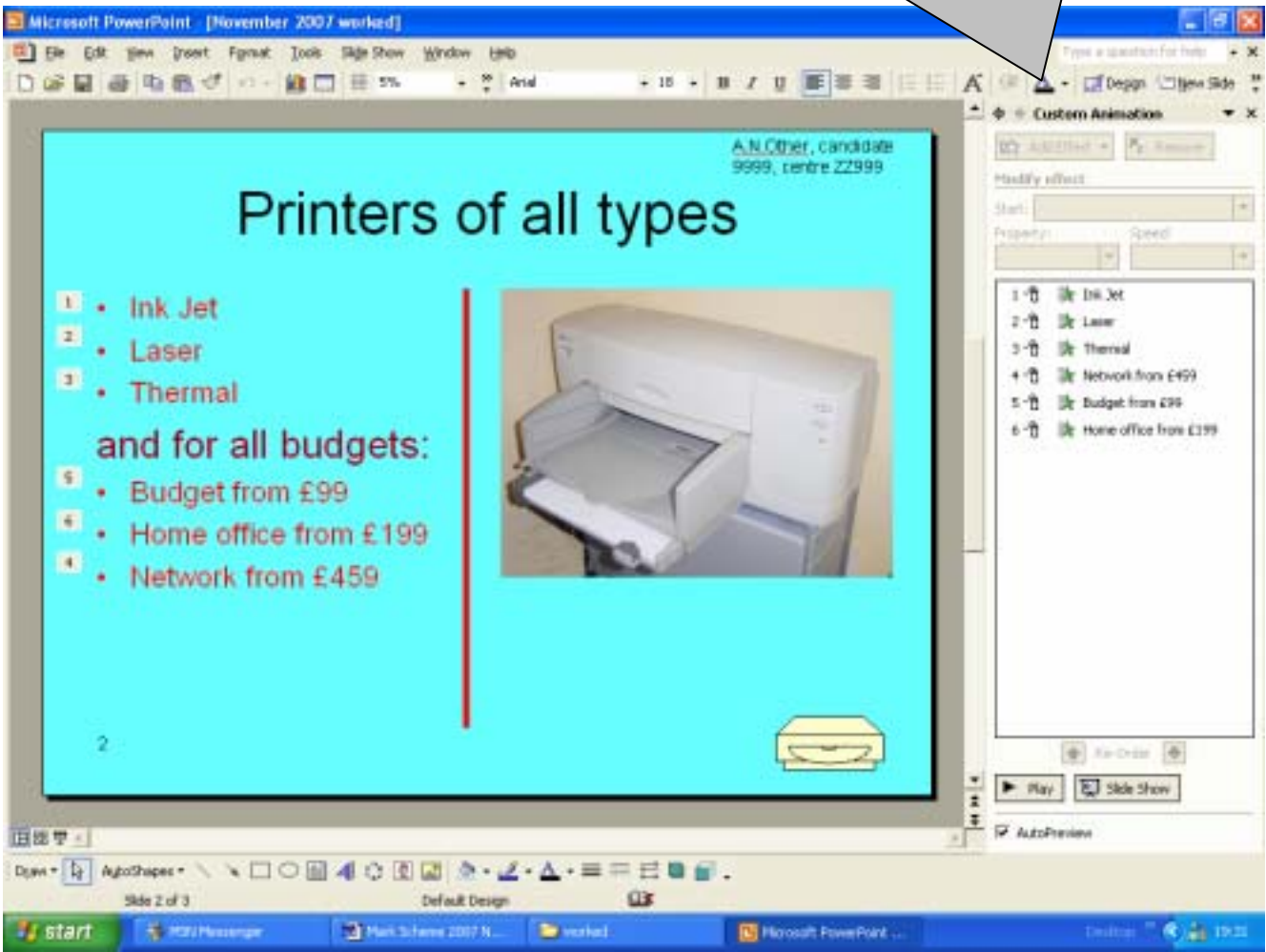
- CD-R
- CD-RW
- DVD-R
- DVD-RW



Page 14	Mark Scheme	Syllabus	Paper
	IGCSE – October/November 2007	0418	03

Candidate name _____ Centre number _____ Candidate number _____

Animation Bullets only 2 marks



Transition slides 2 and 3 2 marks

