

Surname					Other Names				
Centre Number					Candidate Number				
Candidate Signature									

For Examiner's Use

Level 1/2 Certificate

**GERMAN
Listening Test
Foundation Tier**



SPECIMEN PAPER

- | |
|---|
| <ul style="list-style-type: none"> You will need no other materials |
|---|

Time allowed: 30 minutes approximately
+ 5 minutes reading time before the test

- The pauses are pre-recorded for this test.**

Instructions

- Use black ink or black ball-point pen.
- Fill in the boxes at the top of this page.
- You must answer the questions in the spaces provided. Answers written in margins or on blank pages will not be marked.
- Do not open this book until you are told to do so.**

This is what you should do for each item

- After the question number is announced, there will be a pause to allow you to read the instructions and questions.
- Listen carefully to the recording and read the questions again.
- Listen to the recording again, and then answer the questions.
- When the next question is about to start you will hear a bleep like this (*).
- You may write at any time during the test.
- Answer **all** questions.
- Answer the questions in **English**.
- Write neatly and put down **all** the information you are asked to give.
- Ask any questions now. **You must not ask questions or interrupt during the test.**
- You now have five minutes to read through the question paper. You may make notes during this time. You may open your book now.
- The test starts now.**

Information

- The maximum mark for this paper is 40.
- The marks for questions are shown in brackets.
- You must **not** use a dictionary.

For Examiner's Use			
Pages	Mark	Pages	Mark
2/3			
4/5			
6/7			
8/9			
10/11			
12/13			
14/15			
16/17			
Total (Column 1)		→	
Total (Column 2)		→	
TOTAL			
Examiner's Initials			

Answer **all** questions in English in the spaces provided.

Travel

These people are talking about how they like to travel when they go on holiday.

A



B



C



D



E



F



G



All images © Thinkstock

Which means of transport do they prefer?
Write the correct letter in each box.

Example:

G

1

(1 mark)

2

(1 mark)

3

(1 mark)

4

(1 mark)

Local area

These young people are talking about where they live.
What do they have in their local area?
Write the correct letter in each box.

A	museum
B	swimming pool
C	shops
D	hospital
E	hotel
F	parks
G	cinema

Example:**G****5***(1 mark)***6***(1 mark)***7***(1 mark)***8***(1 mark)*

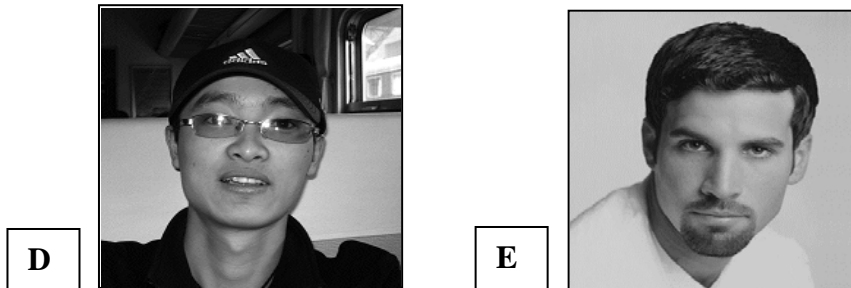
Turn over for the next question

**DO NOT WRITE ON THIS PAGE
ANSWER IN THE SPACES PROVIDED**

Turn over ►

Reality TV

Listen to these people talking about contestants in a reality TV show.

Contestants:**Opinions:**

1	Selfish
2	Funny
3	Dynamic
4	Serious
5	Annoying

Which contestant is each person talking about? What do they think about them?

Write the correct letter of the contestant and the number of the opinion in the boxes.

Example:

Letter of contestant	Number of opinion
A	3

9

Letter of contestant	Number of opinion

(2 marks)

10

Letter of contestant	Number of opinion

(2 marks)



Jobs

A	the wages
B	the canteen
C	the uniform
D	her colleagues
E	the journey
F	the hours
G	the holidays

What aspect of her job is Anna talking about?

Write the correct letter in each box.

Example:

B

11

--

(1 mark)

12

--

(1 mark)

13

--

(1 mark)

14

--

(1 mark)



Computer games

These young people are talking about computer games.

What is their attitude towards each game?

Write **P** for a **positive** attitude.

Write **N** for a **negative** attitude.

Write **P/N** for a **positive and negative** attitude.

Write the correct letter in each box.

Example:

P/N

15

(1 mark)

16

(1 mark)

17

(1 mark)

18

(1 mark)

Holiday destinations and activities

These people are talking about where they like to go on holiday and what they like to do there.

Destinations

A



B



C



D



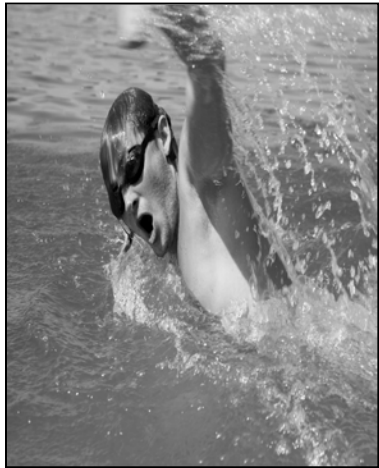
All images on pages 10 & 11 © Thinkstock

Activities

1



2



3



4



Where does each person like to go? What do they like to do there?

Write the correct letter of the destination and the number of the activity in the boxes.

19

Letter of destination	Number of activity

(2 marks)

20

Letter of destination	Number of activity

(2 marks)

4

Turn over ►

School life

Oscar is talking about life at his school.

Choose the correct letter and write the letter in each box.

Example:

His favourite subject is...

A	French.
B	Art.
C	Maths.

B

21 He does **NOT** like...

A	English.
B	Science.
C	ICT.

(1 mark)

22 Lessons start at...

A	8.00.
B	8.30.
C	9.00.

(1 mark)

23 What is **NOT** allowed in school?

A	Mobile phones
B	Jewellery
C	Make-up

(1 mark)

24 What does Oscar do at lunchtime?

A	Listens to music
B	Goes to the library
C	Plays the guitar

(1 mark)

Raising money for charity

These young people are talking about what they do to raise money.

Write the correct letter in each box.

A	Baking
B	Housework
C	Wash cars
D	Gardening
E	Shopping
F	Make greeting cards

25*(1 mark)***26***(1 mark)***27***(1 mark)***28***(1 mark)*

Arguments with parents

What do these people argue about with their parents?
Write the correct letter in each box.

A	Money
B	Homework
C	Clothes
D	Housework
E	Going out
F	Friends
G	Music

29*(1 mark)***30***(1 mark)***31***(1 mark)***32***(1 mark)*

Turn over for the next question

**DO NOT WRITE ON THIS PAGE
ANSWER IN THE SPACES PROVIDED**

Turn over ►



Stress

Listen to these people talking about stress.

A	Read
B	Sport
C	Eat healthily
D	Run
E	Get a good night's sleep
F	Eat chocolate
G	Voluntary work
H	Try not to do too much

What **two** things does each speaker do to deal with stress?

Write the correct letters in the boxes.

Example:

What **two** things does Laurenz do?



A

F

33 What **two** things does Claudia do?



(2 marks)

34 What **two** things does Gregor do?



(2 marks)

END OF QUESTIONS

Level 1/2 Certificate



GERMAN Listening Test Transcript Foundation Tier

FOR INVIGILATOR'S USE ONLY

SPECIMEN PAPER

Time allowed: 30 minutes approximately
+ 5 minutes reading time before the test

- **The pauses are pre-recorded for this test.**

This is what you should do for each item.

- After the question number is announced, there will be a pause to allow you to read the instructions and questions.
- Listen carefully to the recording and read the questions again.
- Listen to the recording again, and then answer the questions.
- When the next question is about to start you will hear a bleep like this (*).
- You may write at any time during the test.
- Answer **all** questions.
- Answer the questions in **English**.
- Write neatly and put down **all** the information you are asked to give.
- Ask any questions now. **You must not ask questions or interrupt during the test.**
- You now have five minutes to read through the question paper. You may make notes during this time. You may open your book now.
- **The test starts now.**

<p>The Invigilator must not pause this recording at any time once the test has started as all pauses are pre-recorded.</p>

- Example:** M Ich fahre gern mit dem Reisebus.
- 1 F Ich fahre gern mit dem Zug.
- 2 M Ich fahre gern mit dem Auto.
- 3 F Ich fahre lieber mit dem Schiff.
- 4 M Ich fliege gern mit dem Flugzeug.
- Example:** F In meiner Stadt gibt es ein Kino.
- 5 M In meinem Dorf gibt es viele Geschäfte.
- 6 F In meiner Stadt gibt es Parks.
- 7 M In der Stadtmitte gibt es ein Schwimmbad.
- 8 F Wo ich wohne, gibt es ein Museum.
- Example:** F Ich mag Patricia. Sie ist das Mädchen mit den langen Haaren. Sie ist sehr aktiv.
- 9 M Mario gefällt mir besser. Er ist der Junge, der eine Brille trägt. Er ist sehr lustig und humorvoll.
- 10 F Wie findest du Liam? Er hat kurze Haare. Er hat auch einen Schnurrbart und einen Bart. Ich finde ihn total doof. Er ist wirklich ärgerlich.
- Example:** F Ich esse zu Mittag. Das Essen hier ist wunderbar.
- 11 F Ich verstehe mich sehr gut mit meinen Mitarbeitern. In der Mittagspause plaudern wir. Das finde ich gut.
- 12 F Ich mag meine Arbeit, aber der Besitzer ist nicht sehr nett. Er sitzt den ganzen Tag in seinem Büro.
- 13 F Ich kriege nicht genug Geld. Das ist lächerlich. Ich werde mit dem Besitzer sprechen, um meinen Lohn mit ihm zu besprechen.
- 14 F Ich arbeite zu viele Stunden. Am Wochenende sehe ich meine Familie nicht.

- Example:** **M** Dieses neue Spiel ist sehr lustig, aber es ist teuer.
- 15** **F** Dieses Spiel ist gut. Es ist interessant und ich mag die kleinen Mäuse, die den Käse fressen. Sie sind lieb.
- 16** **M** Dieses Spiel ist zu langweilig. Es ist nur für kleine Kinder.
- 17** **F** Ich finde dieses Spiel gut und die Musik ist sehr gut. Auf der anderen Seite ist es ziemlich schwierig. Am Ende war ich sehr müde.
- 18** **M** Ich kann dieses Spiel nicht kritisieren. Ich habe das toll gefunden und es gibt keine Gewalt. Das war super.
- 19** **M** Ich fahre ans Meer, weil ich gern schwimme.
- 20** **F** Ich fahre gern in die Berge, denn ich mag Wintersport.
-
- Example:** **M** Mein Lieblingsfach ist Kunst.
- 21** **M** Ich hasse Englisch, aber Naturwissenschaften finde ich OK.
- 22** **M** Ich komme um acht Uhr in der Schule an, und die erste Stunde beginnt um acht Uhr dreißig.
- 23** **M** In meiner Schule sind Handys erlaubt, aber Schmuck darf man nicht tragen.
- 24** **M** In der Mittagspause geht mein bester Freund in die Bibliothek, aber ich spiele lieber Gitarre im Musiksaal.
- 25** **F** Ich gehe für meine Großmutter einkaufen.
- 26** **M** Ich arbeite nach der Schule im Garten.
- 27** **M** Ich backe Kuchen für meine Freunde.
- 28** **F** Samstags wasche ich Autos.

- 29** **M** Meine Eltern sagen, dass ich nicht genug Hausaufgaben mache.
- 30** **F** Ich streite mit meinen Eltern, weil sie meine Freunde nicht mögen.
- 31** **M** Wenn ich mit Freunden ausgehe, muss ich schon um 10 Uhr nach Hause kommen. Das ist zu früh!
- 32** **F** Meine Eltern sagen, dass ich nicht genug im Haushalt helfe.
- Example:** **M** Was machst du, um dich zu entspannen, Laurenz?
- M** Ich esse Schokolade und ich lese ein gutes Buch.
- 33** **M** Und was machst du, Claudia?
- F** Man muss gesund essen. Das ist sehr wichtig. Aktiv sein ist auch gut. Ich hasse es, am Computer zu sitzen. Ich gehe windsurfen.
- 34** **M** Und was meinst du, Gregor?
- M** Man muss lernen, 'nein' zu sagen. Man soll nicht zu viel machen. Es ist auch wichtig, acht Stunden pro Nacht zu schlafen.

END OF TEST



**LEVEL 1/2 CERTIFICATE
LISTENING TEST**

FOUNDATION TIER

SPECIMEN MARK SCHEME

The specimen assessment materials are provided to give centres a reasonable idea of the general shape and character of the planned question papers and mark schemes in advance of the first operational exams.

READING & LISTENING TESTS

Notes on the Marking Scheme

Non-verbal Answers

Follow the mark scheme as set out.

Verbal Answers

1. The basic principle of assessment is that candidates should gain credit for what they know, understand and can do. The following guidance should be borne in mind when marking.
 - (a) Credit should be given for all answers which convey the key idea required intelligibly and without ambiguity. A separate assessment of spelling, punctuation and grammar is not required on these papers because of the nature of the answers. However, these aspects are an integral part of assessing communication and marks cannot be awarded where errors in spelling, punctuation or grammar lead to a failure to communicate the required information **without ambiguity**.
 - (b) Where a candidate has given alternatives or additional information in an answer, the following criteria should be applied:
 - if the alternative/addition does not contradict the key idea or make it ambiguous, **accept**;
 - if the alternative/addition contradicts the key idea or makes it ambiguous, **reject**.
 - (c) Where numbered lines are given within a question/section of a question, credit should be given for correct answers, no matter which line they appear on.
 - (d) Where a question has more than one **section**, a candidate may include as part of the answer to one section the information required to answer another section. For instance, the information required to answer section (b) might be given as part of the answer to section (a). In such cases, credit should be given for having answered section (b), provided that no incorrect answer has been given for that section in the correct place.
 - (e) Where a question or part of a question carries more than one mark, candidates are given credit for all the correct answers they give, even if they have given incorrect answers as well, except where any of the latter contradicts a correct answer that they have given.
2./..... means that these are acceptable alternative answers. (.....) means that this information is not needed for full marks.
3. In questions where candidates are asked to name, for example, three types of vegetable sold in the market, only the first three items they write down should be considered.
4. Accept
 - T/F/?
 - Target language equivalent as instructed in rubric (eg. V/F/PM)
 - ✓/X/?
 - a mix and match approach using the above, where the response is clear and unambiguous (eg. T and ✓ are both used by the candidate).
5. In multiple choice questions where candidates must choose one letter or number, they should automatically get no mark awarded if they give more than one. If the rubric instructs them to write one letter or number in the box and they do so, but write a second letter or number outside the box too, then the answer in the box should be considered.

6. No mark scheme can cover all possible answers. When in doubt:
 - look for the key idea, where this is appropriate.
 - **NFP** = no further penalty.
7. Further examples of un(acceptable) answers will be added at the Standardisation meeting once the examination has been sat.

Foundation Tier

Question	Accept	Mark
1	F	1
2	C	1
3	A	1
4	E	1

(4 marks)

Question	Accept	Mark
5	C	1
6	F	1
7	B	1
8	A	1

(4 marks)

Question	Accept	Mark
9	D, 2	1 + 1
10	E, 5	1 + 1

(4 marks)

Question	Accept	Mark
11	D	1
12	C	1
13	A	1
14	F	1

(4 marks)

Question	Accept	Mark
15	P	1
16	N	1
17	P/N	1
18	P	1

(4 marks)

Question	Accept	Mark
19	B, 2	1 + 1
20	C, 4	1 + 1

(4 marks)

Question	Accept	Mark
21	A	1
22	B	1
23	B	1
24	C	1

(4 marks)

Question	Accept	Mark
25	E	1
26	D	1
27	A	1
28	C	1

(4 marks)

Question	Accept	Mark
29	B	1
30	F	1
31	E	1
32	D	1

(4 marks)

Question	Accept	Mark
33	C, B (in any order)	1 + 1
34	E, H (in any order)	1 + 1

(4 marks)

Total marks 40