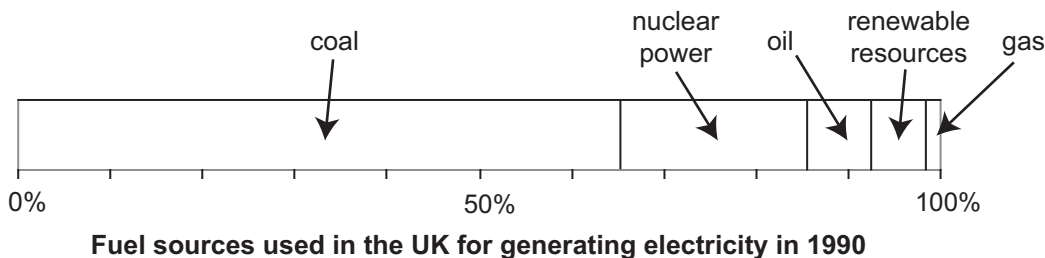




**Answer ALL questions.**

1. (a) A student investigated the use of renewable sources for generating electricity in the United Kingdom (UK).

Study Figure 1(a).



**Figure 1(a)**

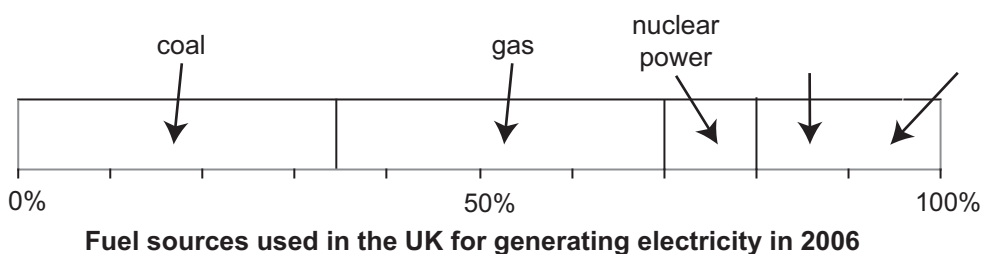
- (i) Which was the most important fuel source for generating electricity?

..... (1)

- (ii) What percentage of the electricity was generated by nuclear power?

..... (1)

- (b) Study Figure 1(b). Figure 1(c) shows some additional information.



**Figure 1(b)**

Fuel source	Percentage (%) of total electricity production
Oil	12
Renewable sources	8

**Figure 1(c)**

- (i) Use the information given in Figure 1(c) to complete and label Figure 1(b).

(2)



(ii) Describe how the use of coal and renewable sources in the generation of electricity changed between 1990 (Figure 1(a)) and 2006 (Figure 1(b)).

Coal

.....

.....

.....

.....

Renewable sources

.....

.....

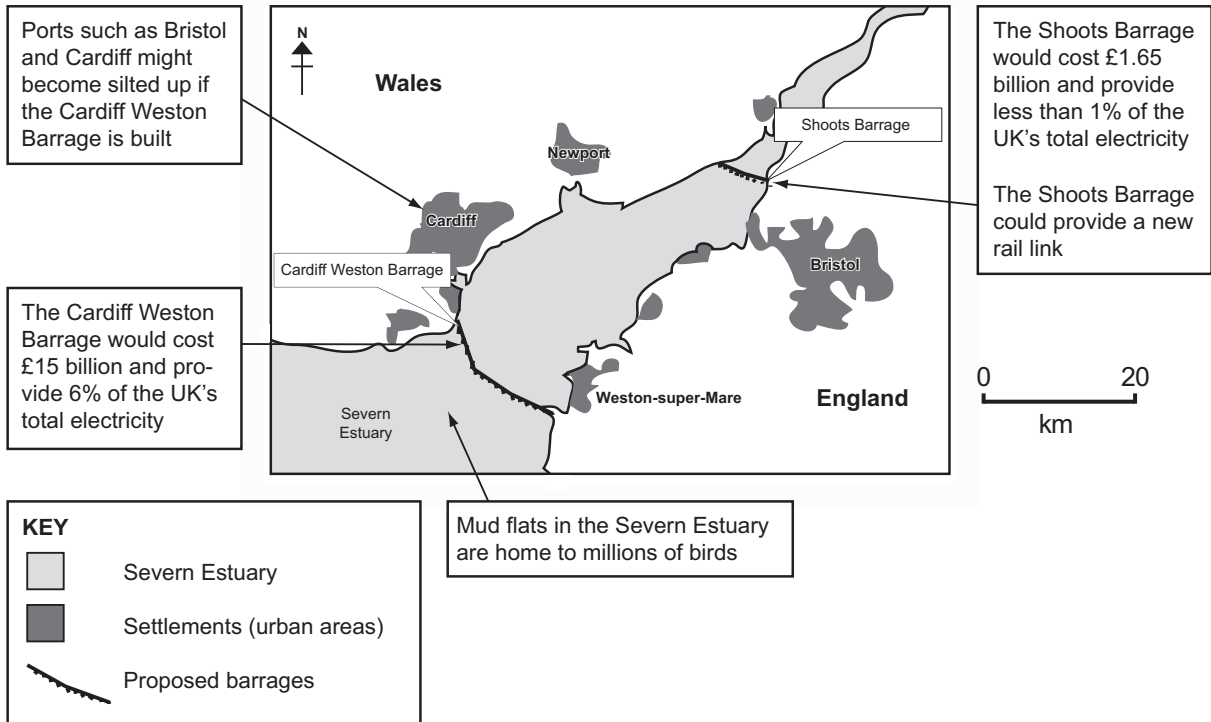
.....

.....

(4)



(c) The student investigated proposals to build two barrages across the Severn Estuary. The barrages are shown on Figure 1(d).



**Figure 1(d)**

Complete the following sentences using information from Figure 1(d).

The proposed Cardiff Weston Barrage is ..... kilometres long and would stretch across the Severn Estuary from south of Cardiff, Wales, to ..... of Weston-super-Mare, England. The smaller Shoots Barrage would cost ..... less than the Cardiff Weston Barrage scheme, and would provide a new ..... across the Severn Estuary.

**(4)**



(d) The student visited Weston-super-Mare and undertook a questionnaire survey to find out the views of local residents on the proposed Cardiff Weston Barrage. Figure 1(e) shows the results of this survey.

Question number	Question	Yes	No	Don't know
1	Will the Cardiff Weston Barrage destroy seabird habitats (homes)?	30	5	15
2	Will the Cardiff Weston Barrage reduce the number of tourists coming to Weston-super-Mare?	48	2	0
3	Will the Cardiff Weston Barrage produce renewable and pollution-free energy?	42	3	5
4	Will constructing the Cardiff Weston Barrage provide local employment?	24	10	16
5	Overall, are you in favour of the Cardiff Weston Barrage?	14	33	3

**Figure 1(e)**

(i) The student wrote ‘Although the Cardiff Weston Barrage would supply a large amount of renewable energy, some people might oppose its construction.’

Explain why the student reached these conclusions.

.....

.....

.....

.....

.....

.....

.....

.....

.....

.....

.....

.....

.....

.....

.....

.....

.....

.....

.....

.....

.....

.....

.....

.....

(6)



Leave blank

(ii) Suggest how the student might have extended their fieldwork.

.....

.....

.....

.....

(2)

Q1

(Total 20 marks)

--	--



2. (a) Study Figure 2(a) which is a labelled aerial photograph of the Herrliberg region of Switzerland.

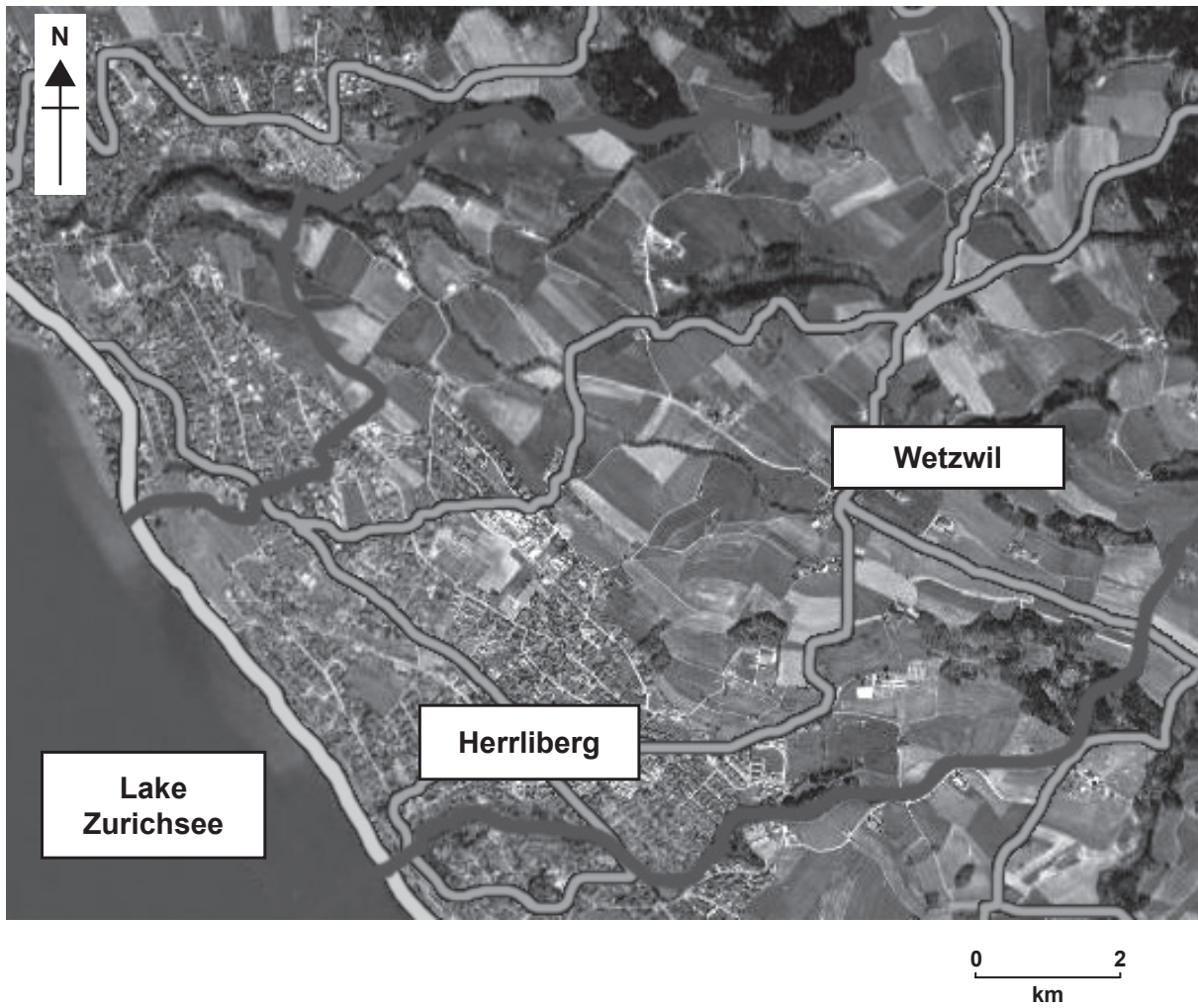


Figure 2(a)



Figure 2(b) is a sketch map based on the aerial photograph and four annotated sketches of the region.

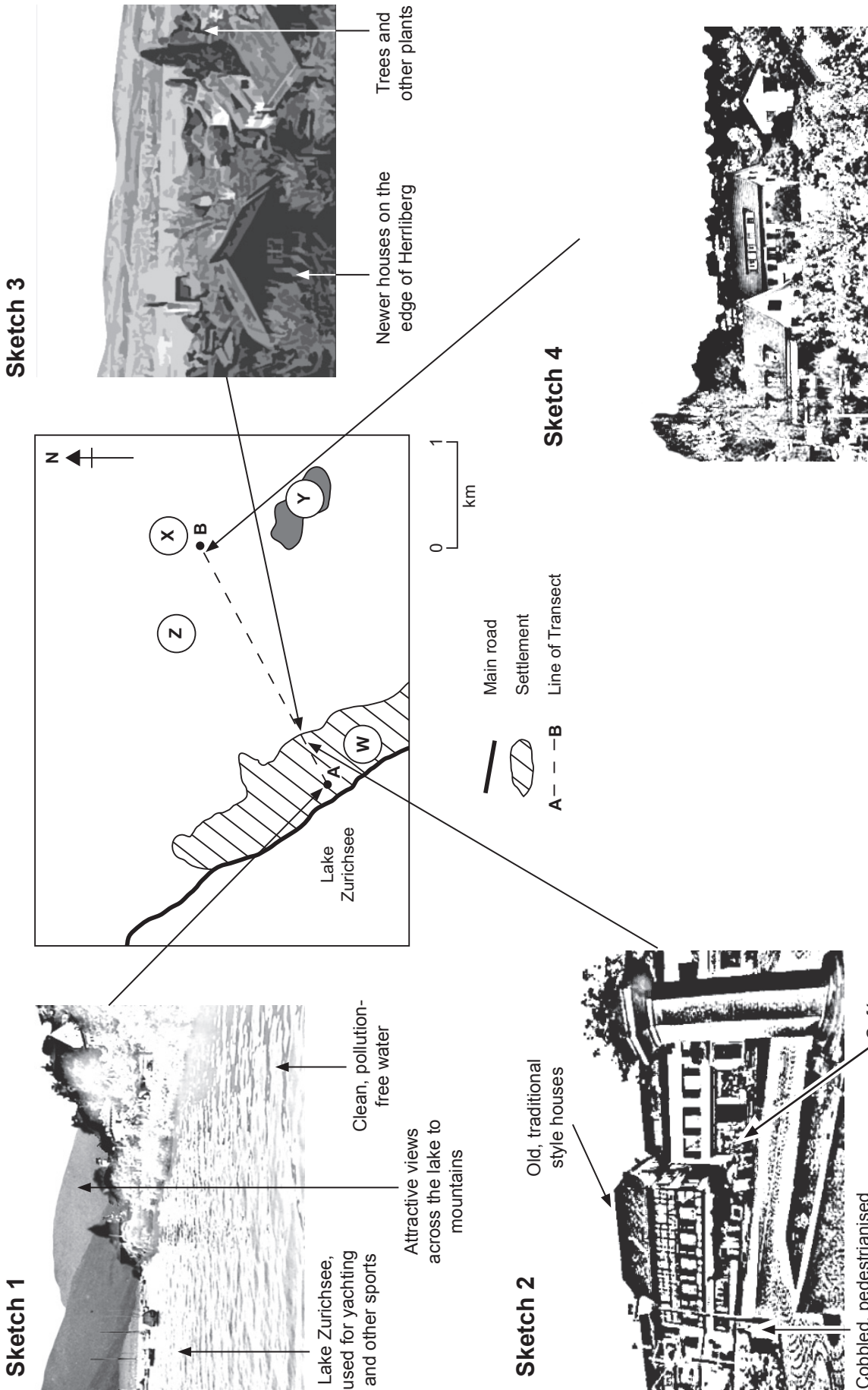


Figure 2(b)





Study Figure 2(a) and Figure 2(b).

(i) Name the settlements at:

1. **W** .....

2. **X** .....

**(2)**

(ii) Suggest the land uses at:

1. **Y** .....

2. **Z** .....

**(2)**

(iii) Study sketches 1, 2 and 3 on Figure 2(b).

Annotate Sketch 4.

**(3)**

(iv) Describe how the appearance of the buildings and land use change along the transect **A** to **B** shown in Figure 2(b).

**Buildings**

.....  
.....  
.....  
.....

**Land use**

.....  
.....  
.....  
.....

**(4)**

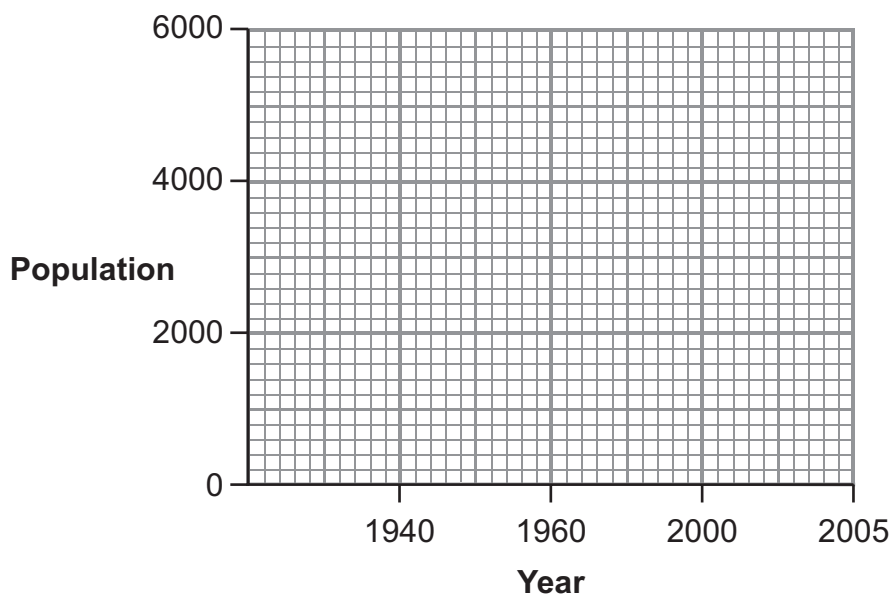


(b) A local student investigated the population growth in the region, shown in Figure 2(c).

<b>Year</b>	1940	1960	2000	2005
<b>Population</b>	2 000	3 200	5 500	5 700

**Figure 2(c)**

(i) Use the information in Figure 2(c) to complete Figure 2(d).



**Figure 2(d)**

**(2)**

(ii) State the population in 2010 if it continues to grow at the same rate as between 2000 and 2005.

..... **(1)**



**BLANK PAGE**

**Question 2 continues on the next page**



(c) The student wanted to know why the population of the region is increasing. She carried out a survey of 25 people who had recently moved to the Herrliberg region.

Figure 2(e) shows the results of her questionnaire survey.

Question	Answers	Number of answers
What was your main reason for moving to the Herrliberg region?	Cheaper taxes than Zurich (Switzerland)	10
	Attractive scenery	8
	Clean, safe, traffic free environment	4
	Excellent transport links to Zurich	2
	Many sporting/recreation opportunities (e.g. sailing)	1
Where did you live before moving to the Herrliberg region?	Zurich	11
	Italy	4
	Hungary	2
	United States of America (USA)	2
	Germany	2
	Greece	2
	UK	2

Figure 2(e)



What conclusions might the student reach to explain movement to the Herrliberg region?

.....

.....

.....

.....

.....

.....

.....

.....

.....

.....

.....

.....

.....

.....

.....

.....

.....

.....

.....

.....

.....

.....

.....

.....

(6)

Q2

(Total 20 marks)



3. Use your own experience of ONE fieldwork investigation to answer this question.

Write the title of your investigation.

.....

(a) Give **two** aims for your fieldwork investigation.

Aim 1

.....

.....

Aim 2

.....

.....

(2)

(b) (i) List the data you **planned** to collect.

.....

.....

.....

.....

.....

.....

.....

.....

(4)



(ii) Describe how you collected this data.

.....

.....

.....

.....

.....

.....

.....

.....

.....

**(4)**

(iii) Evaluate how accurate and how representative the data you collected was.

.....

.....

.....

.....

.....

.....

.....

.....

.....

**(4)**



(c) Illustrate **two** named methods of presentation of this data.

Method 1

.....

.....

.....

.....

.....

.....

Method 2

.....

.....

.....

.....

.....

.....

(6)

Q3

(Total 20 marks)

**TOTAL FOR PAPER: 60 MARKS**

**END**

