



Cambridge International Examinations
Cambridge International General Certificate of Secondary Education

CANDIDATE
NAME

CENTRE
NUMBER

--	--	--	--	--

CANDIDATE
NUMBER

--	--	--	--

ENGLISH AS A SECOND LANGUAGE

0511/31

Paper 3 Listening (Core)

October/November 2014

Approx. 30–40 minutes

Candidates answer on the Question Paper.

Additional Materials: As listed in Instructions to Supervisors.

READ THESE INSTRUCTIONS FIRST

Write your Centre number, candidate number and name on all the work you hand in.

Write in dark blue or black pen.

Do not use staples, paper clips, highlighters, glue or correction fluid.

DO **NOT** WRITE IN ANY BARCODES.

Answer **all** questions.

Dictionaries are **not** permitted.

At the end of the examination, fasten all your work securely together.

The number of marks is given in brackets [] at the end of each question or part question.

This document consists of **7** printed pages and **1** blank page.

Questions 1–6

For questions 1–6 you will hear a series of short sentences. Answer each question on the line provided. Your answers should be as brief as possible.

You will hear each item twice.

1 What **two** things does Jay’s mother want from the supermarket?
.....[1]

2 What is the boy going to have in his sandwich?
.....[1]

3 What can the tourists do while they are travelling? Give **two** details.
.....
.....[1]

4 What is the weather going to be like in the morning?
.....[1]

5 What does Gemma want her friend to lend her?
.....[1]

6 (a) What does the customer want to buy?
.....[1]

(b) How does the manager offer to put things right?
.....[1]

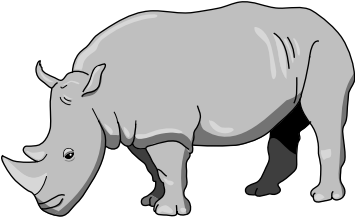
[Total: 7]

Question 7

Listen to the following interview with a scientist from Nepal about a national park and the conservation work done there. Then complete the notes below.

You will hear the interview twice.

Royal Chitwan National Park in Nepal



Nepal
 land area: 148,000 square kilometres
 population: about [1]
 highest point: 8,000 metres above sea level
 variety of weather conditions

History of park
 area was a safe place for rhinos in mid-20th century
 first ever national park was created in Nepal in year [1]
 eventually, the park was listed as a World Heritage Site

Plants
 elephant grass – keeps animals dry and safe
 – used by people for building [1]

Wildlife in park
 birds, e.g. giant hornbill
 mammals that are safe from extinction, e.g. leopards
 endangered species, e.g. river dolphins

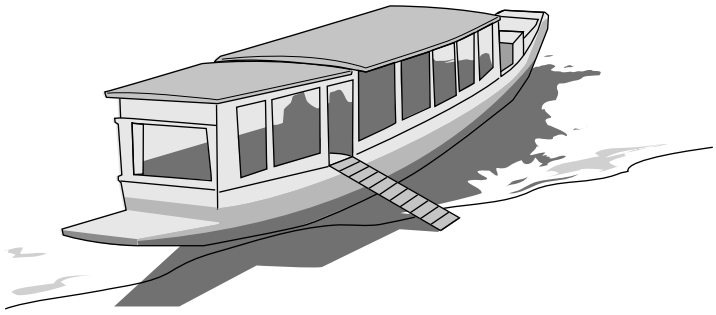
Tigers
 after last count, tiger population has increased by per cent [1]
 technology currently used to carry out the survey:
 help with recognising individual tigers [1]
 people want to use tigers' habitat as farmland

[Total: 5]

Question 8

Listen to the following talk about taking books to children in Laos. Then complete the following details.

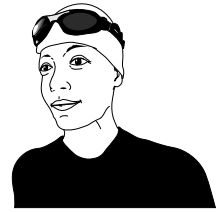
You will hear the talk twice.

Book boats	
	
Aim: to help improve children's opportunities	
Best slogan: "....."	[1]
What we do: build or improve schools and train teachers	
Difficulties faced by inhabitants	
most people live in remote places, in the countryside	
because of heavy rain, is difficult for six months of the year	[1]
type of work done during dry periods: construction work	
Latest project	
location: villages near the Mekong River	
two boats have been made into	[1]
typical day:	
boat arrives early in the morning	
children choose books	
children use to read at night	[1]
departs early next morning	
Other activities	
games to teach literacy and, e.g. keeping yourself clean	[1]
children learn about their, through singing and dancing	[1]
organisation hopes to have enough to expand in future	[1]

[Total: 7]

Question 9

Listen to the following interview with Anita Price, a long-distance swimmer, and then show whether each statement is true or false by putting a tick in the appropriate box.



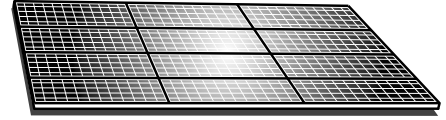
You will hear the interview twice.

	True	False
(a) Anita was the first person to swim between Cuba and Florida.	<input type="checkbox"/>	<input type="checkbox"/>
(b) Anita achieved a world record before she was 30.	<input type="checkbox"/>	<input type="checkbox"/>
(c) In 1978, Anita gave up her swim because of stormy seas.	<input type="checkbox"/>	<input type="checkbox"/>
(d) At the age of 60, Anita felt that her mind was getting weaker.	<input type="checkbox"/>	<input type="checkbox"/>
(e) To prepare for the swim, Anita had to have some first aid training.	<input type="checkbox"/>	<input type="checkbox"/>
(f) When Anita was training in the pool, she used the time to learn words in other languages.	<input type="checkbox"/>	<input type="checkbox"/>
(g) Anita sings when she is in open water.	<input type="checkbox"/>	<input type="checkbox"/>
(h) Anita's attempt in 2012 failed because of injury.	<input type="checkbox"/>	<input type="checkbox"/>
(i) Anita advises people to fulfil their ambitions before they get too old.	<input type="checkbox"/>	<input type="checkbox"/>
(j) Anita thinks long distance swimming depends on teamwork.	<input type="checkbox"/>	<input type="checkbox"/>

[5 marks]

Question 10

Listen to a woman called Rose Mwangi talking about solar power in Kenya, and then indicate which statement – A, B or C – best completes the sentence, by putting a tick in the appropriate box.



You will hear the talk twice.

(a) Rose's village does not have electricity because

A all the electricity power lines in the area have been cut.

B the country is not able to produce any electricity at all.

C it is not worth supplying electricity to such a small place.

(b) Rose says that, in the past, kerosene

A was very expensive.

B had many medical uses.

C was used to heat homes.

(c) Some women in the village have

A become engineering teachers.

B gained high level qualifications in electrical engineering.

C received training in the engineering skills they need.

(d) If people in a village want solar equipment,

A the village energy committee members pay for it all.

B the villagers pay what they are able to afford.

C the solar engineers pay a small sum for it.

(e) According to Rose, life has become more

A expensive.

B convenient.

C complicated.

(f) Rose gives an example of one man who

A charges villagers to watch television.

B installs televisions for the villagers.

C sells televisions to the villagers.

[Total: 6]

BLANK PAGE

Permission to reproduce items where third-party owned material protected by copyright is included has been sought and cleared where possible. Every reasonable effort has been made by the publisher (UCLES) to trace copyright holders, but if any items requiring clearance have unwittingly been included, the publisher will be pleased to make amends at the earliest possible opportunity.

Cambridge International Examinations is part of the Cambridge Assessment Group. Cambridge Assessment is the brand name of University of Cambridge Local Examinations Syndicate (UCLES), which is itself a department of the University of Cambridge.