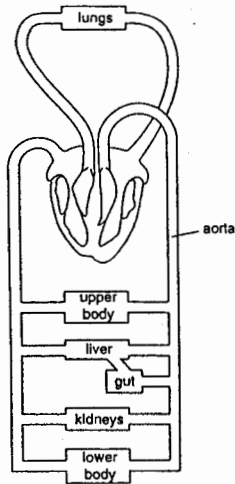


1. The diagram shows the blood circulation system of a human.



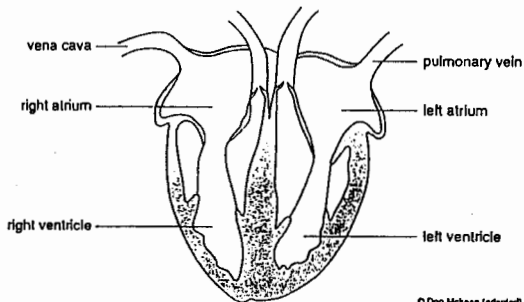
How many times does blood from the kidneys pass through the heart on its way to the aorta?

- A one
- B two
- C four
- D more than four

2. Which substance is carried by red blood cells?

- A glucose
- B oxygen
- C urea
- D water

3. The diagram shows a vertical section through the heart.



© Don McMan (adapted).

In which structure does the blood contain the most oxygen?

- A pulmonary vein
- B right atrium
- C right ventricle
- D vena cava

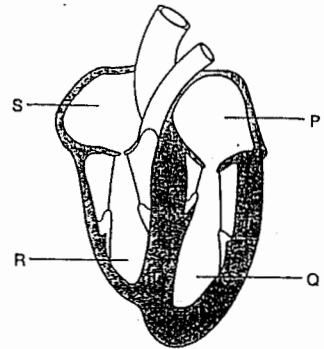
4. The diagram shows a section through a blood vessel.



Which type of blood vessel is shown, and in which direction does the blood flow?

- | type of vessel | direction of flow |
|----------------|-------------------|
| A artery | P to Q |
| B artery | Q to P |
| C vein | P to Q |
| D vein | Q to P |

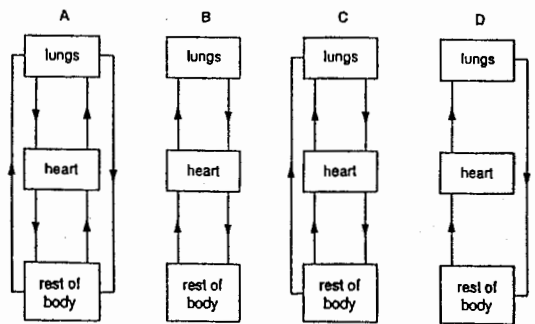
5. The diagram shows the four chambers of a human heart.



When blood returns to the heart from a leg, in which order does the blood pass through these chambers?

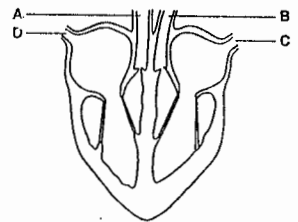
- A P → Q → S → R
- B Q → P → R → S
- C R → S → Q → P
- D S → R → P → Q

6. Which diagram best shows the double circulatory system of a mammal?



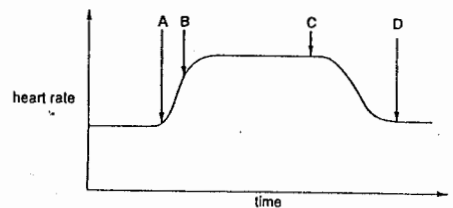
7. The diagram shows a section through a mammalian heart.

Which part carries blood directly to the lungs?



8. The graph shows a person's heart rate before, during and after a period of exercise.

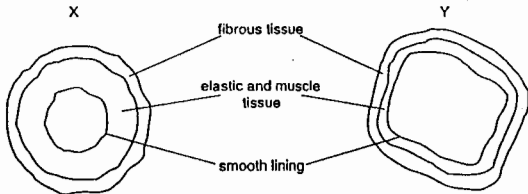
At which point did the period of exercise stop?



9. What is the function of human red blood cells?

- A to absorb heat
- B to carry oxygen
- C to destroy bacteria
- D to make antibodies

10. The diagram shows cross-sections of two types of blood vessel, X and Y.



What do X and Y represent?

	X	Y
A	artery	capillary
B	artery	vein
C	capillary	vein
D	vein	artery

11. Which of the following describes a vein?

	<i>valves present</i>	<i>amount of muscle tissue in wall</i>
A	yes	a lot
B	yes	a little
C	no	a lot
D	no	a little