



UNIVERSITY OF CAMBRIDGE INTERNATIONAL EXAMINATIONS  
International General Certificate of Secondary Education

[www.XtremePapers.com](http://www.XtremePapers.com)

---

**BUSINESS STUDIES**

**0450/23**

Paper 2

**May/June 2013**

INSERT

**1 hour 45 minutes**

---

**READ THESE INSTRUCTIONS FIRST**

This Insert contains the case study material.  
Anything the candidate writes on this Insert will not be marked.

---

This document consists of **3** printed pages and **1** blank page.



### Pete's Paints (PP)

PP manufactures paint. The paint is sold through four small shops that PP owns in country X. The business is a private limited company. Pete is the Managing Director and his three brothers are the only other shareholders.

The business has been trading successfully for 20 years. However, over the last two years PP's sales have fallen. Pete thinks this is caused by the recession and believes things will improve in the coming years. Another problem is increased competition from new paint manufacturers that sell to both large and small shops.

PP makes and sells many different types of paint. Consumers use the paint for painting the inside and outside of houses. PP's shops also sell brushes and other equipment to use with the paint.

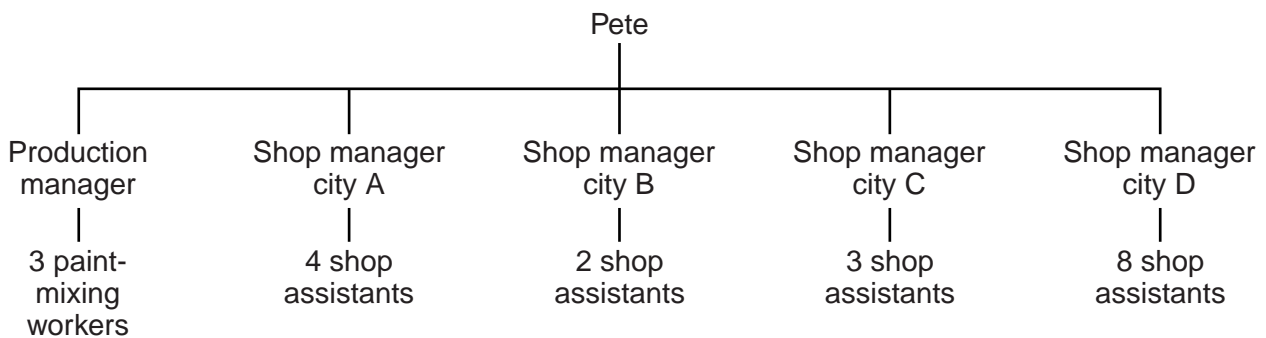
### Appendix 1

Financial information about PP (\$000s)

	2011	2012
Capital employed	100	100
Sales revenue	300	200
Cost of goods sold	60	40
Expenses	210	150
Net profit	30	10

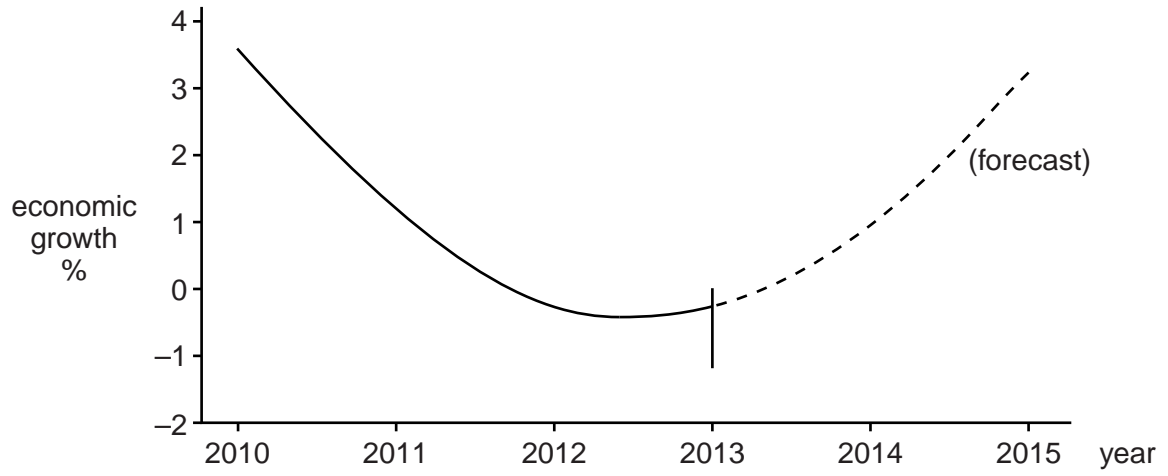
### Appendix 2

Organisational structure of PP



Appendix 3

Business (trade) cycle in country X



**BLANK PAGE**

---

Permission to reproduce items where third-party owned material protected by copyright is included has been sought and cleared where possible. Every reasonable effort has been made by the publisher (UCLES) to trace copyright holders, but if any items requiring clearance have unwittingly been included, the publisher will be pleased to make amends at the earliest possible opportunity.

University of Cambridge International Examinations is part of the Cambridge Assessment Group. Cambridge Assessment is the brand name of University of Cambridge Local Examinations Syndicate (UCLES), which is itself a department of the University of Cambridge.