

# **MARKSCHEME**

**May 2004**

## **MATHEMATICAL METHODS**

**Standard Level**

**Paper 2**

*This markscheme is **confidential** and for the exclusive use of examiners in this examination session.*

*It is the property of the International Baccalaureate Organization and must **not** be reproduced or distributed to any other person without the authorisation of IBCA.*

## Paper 2 Markscheme

### Instructions to Examiners

**Note:** Where there are 2 marks (e.g. M2, A2) for an answer do NOT split the marks unless otherwise instructed.

#### 1 Method of marking

- (a) All marking must be done using a **red** pen.
- (b) Marks should be noted on candidates' scripts as in the markscheme:
  - show the breakdown of individual marks using the abbreviations **(M1)**, **(A2)** etc., unless a part is completely correct;
  - write down each part mark total, indicated on the markscheme (for example, **[3 marks]**) – it is suggested that this be written at the end of each part, and underlined;
  - write down and circle the total for each question at the end of the question.

#### 2 Abbreviations

The markscheme may make use of the following abbreviations:

**(M)** Marks awarded for **Method**

**(A)** Marks awarded for an **Answer** or for **Accuracy**

**(N)** Marks awarded for correct answers, if **no** working shown: they may not be all the marks for the question. Examiners should only award these marks for correct answers where there is no working.

**(R)** Marks awarded for clear **Reasoning**

**(AG)** **Answer Given** in the question and consequently marks are **not** awarded

**Note:** In general, it is not possible to award **(M0)(A1)**.

Examiners should use **(d)** to indicate where discretion has been used. It should only be used for decisions on follow through and alternative methods. It must be accompanied by a brief note to explain the decision made

**Follow through (ft)** marks should be awarded where a correct method has been attempted but error(s) are made in subsequent working which is essentially correct.

- Penalize the error when it first occurs
- Accept the incorrect result as the appropriate quantity in all subsequent working
- If the question becomes much simpler then use discretion to award fewer marks
- Use **(d)** to indicate where discretion has been used. It should only be used for decisions on follow through and alternative methods. It must be accompanied by a brief note to explain the decision made.

### 3 Using the Markscheme

- (a) This markscheme presents a particular way in which each question may be worked and how it should be marked. **Alternative methods** have not always been included. Thus, if an answer is wrong then the working must be carefully analysed in order that marks are awarded for a different method in a manner which is consistent with the markscheme. Indicate the awarding of these marks by **(d)**.

Where alternative methods for complete questions or parts of questions are included, they are indicated by **METHOD 1**, **METHOD 2**, *etc.* Other alternative part solutions are indicated by **EITHER...OR**. It should be noted that **G** marks have been removed, and GDC solutions will not be indicated using the **OR** notation as on previous markschemes.

Candidates are expected to show working on this paper, and examiners should not award full marks for just the correct answer. Where it is appropriate to award marks for correct answers with no working, it will be shown on the markscheme using the *N* notation. All examiners will be expected to award marks accordingly in these situations.

- (b) Unless the question specifies otherwise, accept **equivalent forms**. For example:  $\frac{\sin \theta}{\cos \theta}$  for  $\tan \theta$ . On the markscheme, these equivalent numerical or algebraic forms will generally be written in brackets after the required answer. Paper setters will indicate the required answer, by allocating full marks at that point. Further working should be ignored, even if it is incorrect. For example: if candidates are asked to factorize a quadratic expression, and they do so correctly, they are awarded full marks. If they then continue and find the roots of the corresponding equation, do not penalize, even if those roots are incorrect, *i.e.* once the correct answer is seen, ignore further working.
- (c) As this is an international examination, all **alternative forms of notation** should be accepted. For example: 1.7, 1·7, 1,7; different forms of vector notation such as  $\vec{u}$ ,  $\overline{u}$ ,  $\underline{u}$ ;  $\tan^{-1} x$  for  $\arctan x$ .

### 4 Accuracy of Answers

If the level of accuracy is specified in the question, a mark will be allocated for giving the answer to the required accuracy.

There are two types of accuracy error. Candidates should be penalized **once only IN THE PAPER** for an accuracy error (**AP**).

Award the marks as usual then write  $-1(\text{AP})$  against the answer and also on the **front** cover

**Rounding errors:** only applies to final answers not to intermediate steps.

**Level of accuracy:** when this is not specified in the question the general rule *unless otherwise stated in the question all numerical answers must be given exactly or to three significant figures* applies.

- If a final correct answer is incorrectly rounded, apply the **AP**
- **OR**
- If the level of accuracy is not specified in the question, apply the **AP** for answers not given to 3 significant figures. (Please note that this has changed from May 2003).

**Note:** If there is no working shown, and answers are given to the correct two significant figures, apply the **AP**. However, do **not** accept answers to one significant figure without working.

## 5 Graphic Display Calculators

Many candidates will be obtaining solutions directly from their calculators, often without showing any working. They have been advised that they must use mathematical notation, not calculator commands when explaining what they are doing. Incorrect answers without working will receive no marks. However, if there is written evidence of using a graphic display calculator correctly, method marks may be awarded. Where possible, examples will be provided to guide examiners in awarding these method marks.

### Calculator penalties

Candidates are instructed to write the make and model of their calculator on the front cover. Please apply the following penalties where appropriate.

#### (a) Illegal calculators

If candidates note that they are using an illegal calculator, please report this on a PRF, and deduct 10% of their overall mark. Note this on the front cover. The most common examples are:

**Texas Instruments:** TI-89 (plus); TI-92 (plus); TI-Voyage 200

**Casio:** *fx9970*; *fx2.0* algebra; classpad

**HP:** 38–95 series

#### (b) Calculator box not filled in.

Please apply a calculator penalty (**CP**) of 1 mark if this information is not provided. Note this on the front cover.

## Examples

### 1 Accuracy

A question leads to the answer 4.6789....

- 4.68 is the correct 3 s.f. answer.
- 4.7, 4.679 are to the wrong level of accuracy: both should be penalized the first time this type of error occurs.
- 4.67 is incorrectly rounded – penalize on the first occurrence.

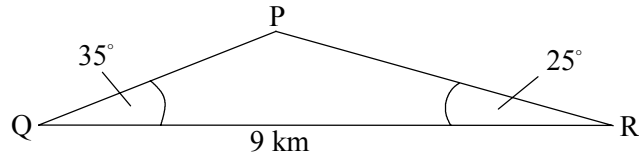
**Note:** All these “incorrect” answers may be assumed to come from 4.6789..., even if that value is not seen, but previous correct working is shown. However, 4.60 is wrong, as is 4.5, 4.8, and these should be penalized as being incorrect answers, not as examples of accuracy errors.

2 **Alternative solutions**

**Question**

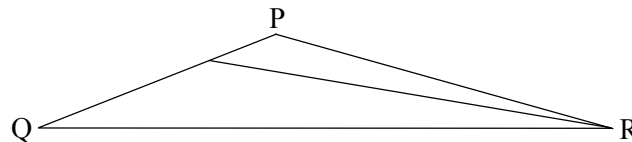
The points P, Q, R are three markers on level ground, joined by straight paths PQ, QR, PR as shown in the diagram.  $QR = 9 \text{ km}$ ,  $\hat{PQR} = 35^\circ$ ,  $\hat{PRQ} = 25^\circ$ .

(Note: in the original question, the first part was to find  $PR = 5.96$ )



**diagram not to scale**

- (a) Tom sets out to walk from Q to P at a steady speed of  $8 \text{ km h}^{-1}$ . At the same time, Alan sets out to jog from R to P at a steady speed of  $a \text{ km h}^{-1}$ . They reach P at the same time. Calculate the value of  $a$ . **[7 marks]**
- (b) The point S is on [PQ], such that  $RS = 2QS$ , as shown in the diagram.



Find the length QS.

**[6 marks]**

**Markscheme**

- (a) **EITHER**
    - Sine rule to find PQ
    - $PQ = \frac{9 \sin 25}{\sin 120}$  **(M1)(A1)**
    - $PQ = 4.39 \text{ km}$  **(A1)**
  - OR**
    - Cosine rule:  $PQ^2 = 5.96^2 + 9^2 - (2)(5.96)(9)\cos 25$  **(M1)(A1)**
    - $= 19.29$
    - $PQ = 4.39 \text{ km}$  **(A1)**
  - THEN**
    - Time for Tom  $= \frac{4.39}{8}$  **(A1)**
    - Time for Alan  $= \frac{5.96}{a}$  **(A1)**
    - Then  $\frac{4.39}{8} = \frac{5.96}{a}$  **(M1)**
    - $a = 10.9$  **(A1) (N5)**
- [7 marks]**

Note that the **THEN** part follows both **EITHER** and **OR** solutions, and this is shown by the alignment.

(b) **METHOD 1**

$$RS^2 = 4QS^2 \quad (A1)$$

$$4QS^2 = QS^2 + 81 - 18 \times QS \times \cos 35 \quad (M1)(A1)$$

$$3QS^2 + 14.74QS - 81 = 0 \text{ (or } 3x^2 + 14.74x - 81 = 0) \quad (A1)$$

$$\Rightarrow QS = -8.20 \text{ or } QS = 3.29 \quad (A1)$$

$$\text{therefore } QS = 3.29 \quad (A1) \quad (N2)$$

**METHOD 2**

$$\frac{QS}{\sin \hat{SRQ}} = \frac{2QS}{\sin 35} \quad (M1)$$

$$\Rightarrow \sin \hat{SRQ} = \frac{1}{2} \sin 35 \quad (A1)$$

$$\hat{SRQ} = 16.7^\circ \quad (A1)$$

$$\text{Therefore, } \hat{QSR} = 180 - (35 + 16.7) = 128.3^\circ \quad (A1)$$

$$\frac{9}{\sin 128.3} = \frac{QS}{\sin 16.7} \left( = \frac{SR}{\sin 35} \right) \quad (M1)$$

$$QS = \frac{9 \sin 16.7}{\sin 128.3} \left( = \frac{9 \sin 35}{2 \sin 128.3} \right) = 3.29 \quad (A1) \quad (N2)$$

If candidates have shown no working award **(N5)** for the correct answer 10.9 in part (a) and **(N2)** for the correct answer 3.29 in part (b).

**[6 marks]**

**3 Follow through**

**Question**

Calculate the acute angle between the lines with equations

$$\mathbf{r} = \begin{pmatrix} 4 \\ -1 \end{pmatrix} + s \begin{pmatrix} 4 \\ 3 \end{pmatrix} \text{ and } \mathbf{r} = \begin{pmatrix} 2 \\ 4 \end{pmatrix} + t \begin{pmatrix} 1 \\ -1 \end{pmatrix}.$$

**Markscheme**

Angle between lines = angle between direction vectors. (May be implied.) **(A1)**

Direction vectors are  $\begin{pmatrix} 4 \\ 3 \end{pmatrix}$  and  $\begin{pmatrix} 1 \\ -1 \end{pmatrix}$ . (May be implied.) **(A1)**

$$\begin{pmatrix} 4 \\ 3 \end{pmatrix} \cdot \begin{pmatrix} 1 \\ -1 \end{pmatrix} = \left| \begin{pmatrix} 4 \\ 3 \end{pmatrix} \right| \left| \begin{pmatrix} 1 \\ -1 \end{pmatrix} \right| \cos \theta \quad \text{span style="float: right;">**(M1)**$$

$$4 \times 1 + 3 \times (-1) = \sqrt{(4^2 + 3^2)} \sqrt{(1^2 + (-1)^2)} \cos \theta \quad \text{span style="float: right;">**(A1)**$$

$$\cos \theta = \frac{1}{5\sqrt{2}} (= 0.1414\dots) \quad \text{span style="float: right;">**(A1)**$$

$$\theta = 81.9^\circ \text{ (1.43 radians)} \quad \text{span style="float: right;">**(A1) (N3)**$$

**Examples of solutions and marking**

| Solutions  | Marks allocated  |               |
|--|--|---------------|
| <p>1. <math>\begin{pmatrix} 4 \\ 3 \end{pmatrix} \cdot \begin{pmatrix} 1 \\ -1 \end{pmatrix} = \left  \begin{pmatrix} 4 \\ 3 \end{pmatrix} \right  \left  \begin{pmatrix} 1 \\ -1 \end{pmatrix} \right  \cos \theta</math></p> <p><math>\cos \theta = \frac{7}{5\sqrt{2}}</math></p> <p><math>\theta = 8.13^\circ</math></p> | <p><b>(A1)(A1)</b> implied<br/><b>(M1)</b></p> <p><b>(A0)(A1)</b></p> <p><b>(A1)ft</b></p>   | Total 5 marks |
| <p>2. <math>\cos \theta = \frac{\begin{pmatrix} 4 \\ -1 \end{pmatrix} \cdot \begin{pmatrix} 2 \\ 4 \end{pmatrix}}{\sqrt{17}\sqrt{20}}</math></p> <p><math>= 0.2169</math></p> <p><math>\theta = 77.5^\circ</math></p>  | <p><b>(A0)(A0)</b> wrong vectors implied<br/><b>(M1)</b> for correct method, <b>(A1)ft</b></p> <p><b>(A1)ft</b></p> <p><b>(A1)ft</b></p> | Total 4 marks |
| <p>3. <math>\theta = 81.9^\circ</math></p>   | <p><b>(N3)</b></p>   | Total 3 marks |

Note that this candidate has obtained the correct answer, but not shown any working. The way the markscheme is written means that the first 2 marks may be implied by subsequent correct working, but the other marks are only awarded if the relevant working is seen. Thus award the first 2 implied marks, plus the final mark for the correct answer.

**END OF EXAMPLES**



**QUESTION 1**

(a) (i)  $\vec{AB} = \vec{OB} - \vec{OA} = \begin{pmatrix} -3 \\ -1 \end{pmatrix} - \begin{pmatrix} 2 \\ -2 \end{pmatrix}$  **(M1)**  
 $= \begin{pmatrix} -5 \\ 1 \end{pmatrix}$  **(A1) (N2)**

(ii)  $|\vec{AB}| = \sqrt{25 + 1}$  **(M1)**  
 $= \sqrt{26} (= 5.10 \text{ to } 3 \text{ s.f.})$  **(A1) (N2)**

**Note:** An answer of 5.1 is subject to AP.

[4 marks]

(b)  $\vec{AD} = \vec{OD} - \vec{OA}$   
 $= \begin{pmatrix} d \\ 23 \end{pmatrix} - \begin{pmatrix} 2 \\ -2 \end{pmatrix}$   
 $= \begin{pmatrix} d - 2 \\ 25 \end{pmatrix}$  **(A1)(A1)**

[2 marks]

(c) (i) **EITHER**

$\hat{B}\hat{A}\hat{D} = 90^\circ \Rightarrow \vec{AB} \cdot \vec{AD} = 0$  or mention of scalar (dot) product. **(M1)**

$\Rightarrow \begin{pmatrix} -5 \\ 1 \end{pmatrix} \cdot \begin{pmatrix} d - 2 \\ 25 \end{pmatrix} = 0$   
 $-5d + 10 + 25 = 0$  **(A1)**  
 $d = 7$  **(AG)**

**OR**

Gradient of AB =  $-\frac{1}{5}$  } **(A1)**  
 Gradient of AD =  $\frac{25}{d - 2}$  }

$\left(\frac{25}{d - 2}\right) \times \left(-\frac{1}{5}\right) = -1$  **(A1)**  
 $\Rightarrow d = 7$  **(AG)**

(ii)  $\vec{OD} = \begin{pmatrix} 7 \\ 23 \end{pmatrix}$  (correct answer only) **(A1)**

[3 marks]

continued...

Question 1 continued

- (d)  $\vec{AD} = \vec{BC}$  (M1)  
 $\vec{BC} = \begin{pmatrix} 5 \\ 25 \end{pmatrix}$  (A1)  
 $\vec{OC} = \vec{OB} + \vec{BC}$  (M1)  
 $\vec{OC} = \begin{pmatrix} -3 \\ -1 \end{pmatrix} + \begin{pmatrix} 5 \\ 25 \end{pmatrix}$   
 $= \begin{pmatrix} 2 \\ 24 \end{pmatrix}$  (A1) (N3)

**Note:** Many other methods, including scale drawing, are acceptable.

[4 marks]

- (e)  $|\vec{AD}| \left( \text{or } |\vec{BC}| \right) = \sqrt{5^2 + 25^2} = \sqrt{650}$  (A1)  
Area =  $\sqrt{26} \times \sqrt{650}$  (= 5.099 × 25.5)  
= 130 (A1)

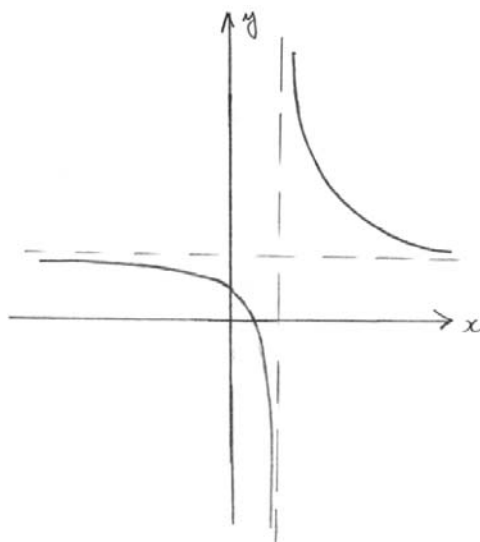
[2 marks]

**Total [15 marks]**

**QUESTION 2**

(a)

(A1)(A1)



**Note:** Award (A1) for a second branch in approximately the correct position, and (A1) for the second branch having positive  $x$  and  $y$  intercepts. Asymptotes need not be drawn.

[2 marks]

(b) (i)  $x$ -intercept  $= \frac{1}{2}$  (Accept  $(\frac{1}{2}, 0)$ ,  $x = \frac{1}{2}$ ) (A1)

$y$ -intercept  $= 1$  (Accept  $(0, 1)$ ,  $y = 1$ ) (A1)

(ii) horizontal asymptote  $y = 2$  (A1)

vertical asymptote  $x = 1$  (A1)

[4 marks]

(c) (i)  $f'(x) = 0 - (x-1)^{-2} \left( = \frac{-1}{(x-1)^2} \right)$  (A2)

(ii) no maximum / minimum points.

since  $\frac{-1}{(x-1)^2} \neq 0$ . (R1)

[3 marks]

(d) (i)  $2x + \ln(x-1) + c$  (accept  $\ln|x-1|$ ) (A1)(A1)(A1)

(ii)  $A = \int_2^4 f(x) dx$  (Accept  $\int_2^4 \left( 2 + \frac{1}{x-1} \right) dx$ ,  $[2x + \ln(x-1)]_2^4$ ) (M1)(A1)

**Notes:** Award (A1) for **both** correct limits.  
Award (M0)(A0) for an incorrect function.

(iii)  $A = [2x + \ln(x-1)]_2^4$   
 $= (8 + \ln 3) - (4 + \ln 1)$  (M1)

$= 4 + \ln 3 (= 5.10, \text{ to 3 s.f.})$  (A1) (N2)

[7 marks]

**Total [16 marks]**

**QUESTION 3**

(a) (i)  $10 + 4\sin 1 = 13.4$

(A1)

(ii) At 2100,  $t = 21$   
 $10 + 4\sin 10.5 = 6.48$

(A1)

(A1) (N2)

**Note:** Award (A0)(A1) if candidates use  $t = 2100$  leading to  $y = 12.6$ .  
No other ft allowed.

[3 marks]

(b) (i) 14 metres

(A1)

(ii)  $14 = 10 + 4\sin\left(\frac{t}{2}\right) \Rightarrow \sin\left(\frac{t}{2}\right) = 1$   
 $\Rightarrow t = \pi$  (3.14) (correct answer only)

(M1)

(A1) (N2)

[3 marks]

(c) (i) 4

(A1)

(ii)  $10 + 4\sin\left(\frac{t}{2}\right) = 7$

(M1)

$\Rightarrow \sin\left(\frac{t}{2}\right) = -0.75$

(A1)

$\Rightarrow t = 7.98$

(A1) (N3)

(iii) depth  $< 7$  from  $8 - 11 = 3$  hours  
from  $2030 - 2330 = 3$  hours  
therefore, total = 6 hours

(M1)

(M1)

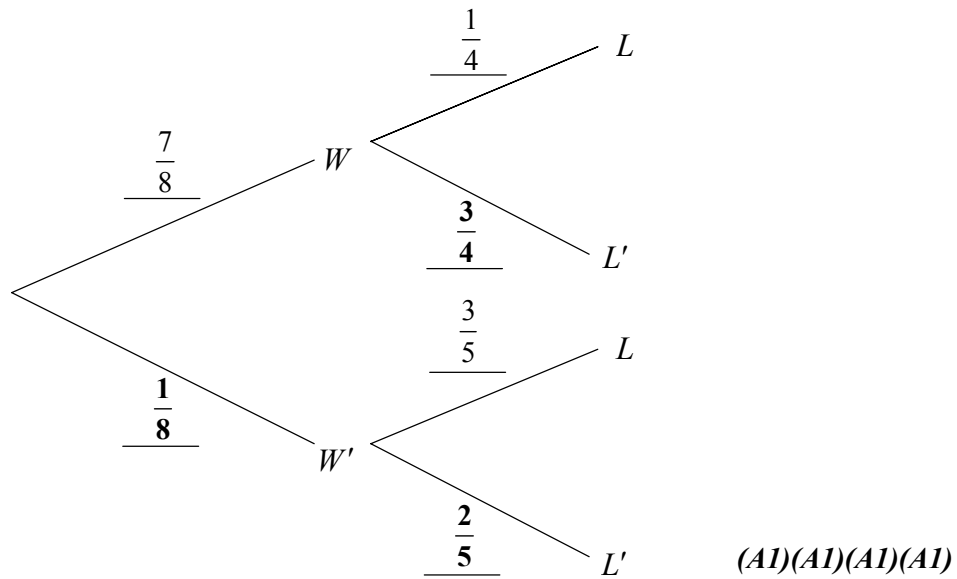
(A1) (N3)

[7 marks]

Total [13 marks]

**QUESTION 4**

(a)



**Note:** Award **(AI)** for the given probabilities  $\left(\frac{7}{8}, \frac{1}{8}, \frac{3}{5}\right)$  in the correct positions, and **(AI)** for each **bold** value.

**[4 marks]**

(b) Probability that Dumisani will be late is  $\frac{7}{8} \times \frac{1}{4} + \frac{1}{8} \times \frac{3}{5}$  **(AI)(AI)**  
 $= \frac{47}{160} (0.294)$  **(AI)** **(N2)**

**[3 marks]**

(c)  $P(W|L) = \frac{P(W \cap L)}{P(L)}$   
 $P(W \cap L) = \frac{7}{8} \times \frac{1}{4}$  **(AI)**  
 $P(L) = \frac{47}{160}$  **(AI)**  
 $P(W|L) = \frac{\frac{7}{32}}{\frac{47}{160}}$  **(M1)**  
 $= \frac{35}{47} (= 0.745)$  **(AI)** **(N3)**

**[4 marks]**

**Total [11 marks]**

**QUESTION 5**

- (a) (i) 2420 (A1)
- (ii)  $1420 + 100n > 2000$  (M1)  
 $n > 5.8$   
 1999 (accept 6<sup>th</sup> year or  $n = 6$ ) (A1) (N1)

**Note:** Award (A0) for 2000, or after 6 years, or  $n = 6$ , 2000.

*[3 marks]*

- (b) (i)  $1\,200\,000(1.025)^{10} = 1\,536\,101$  (accept 1 540 000 or 1.54 (million)) (A1)
- (ii)  $\frac{1\,536\,101 - 1\,200\,000}{1\,200\,000} \times 100$  (M1)  
 28.0 % (accept 28.3 % from 1 540 000) (A1) (N2)
- (iii)  $1\,200\,000(1.025)^n > 2\,000\,000$  (accept an equation) (M1)  
 $n \log 1.025 > \log\left(\frac{2}{1.2}\right) \Rightarrow n > 20.69$  (M1)(A1)  
 2014 (accept 21<sup>st</sup> year or  $n = 21$ ) (A1) (N3)

**Notes:** Award (A0) for 2015, after 21 years, or  $n = 21$ , so 2015.

*[7 marks]*

- (c) (i)  $\frac{1\,200\,000}{1420} = 845$  (A1)
- (ii)  $\frac{1\,200\,000(1.025)^n}{1420 + 100n} < 600$  (M1)(M1)  
 $\Rightarrow n > 14.197$   
 15 years (A2) (N2)

*[5 marks]*

**Total [15 marks]**

**QUESTION 6**

(i) (a) (i) **EITHER**

$P(\text{men}) \times P(\text{no}) \times \text{Total}$  (may be implied) **(M1)**

$$a = \left( \frac{40}{75} \times \frac{21}{75} \right) \times 75 \quad \textbf{(A1)(A1)}$$

$$a = 11.2 \quad \textbf{(AG)}$$

**OR**

$\frac{(\text{row total}) \times (\text{column total})}{\text{total}}$  (may be implied) **(M1)**

$$a = \frac{40 \times 21}{75} \quad \textbf{(A1)(A1)}$$

$$a = 11.2 \quad \textbf{(AG)}$$

**Note:** Award **(M0)(A0)** for showing the matrix obtained from GDC.

(ii)  $d = 13.1$  **(A1)**

(iii)  $\chi^2_{\text{calc}} = 4.15$  (Accept  $4.08 \leq \chi^2 \leq 4.15$ ) **(A2)**

**[6 marks]**

(b) **EITHER**

critical value of  $\chi^2 = 4.605$  **(A1)**

since  $\chi^2_{\text{calc}} (= 4.15) < 4.605$ , (answers are independent of gender) **(R2)**

**OR**

$p = 0.126$  **(A1)**

since  $p > 0.100$  (answers are independent of gender) **(R2)**

**[3 marks]**

*continued...*

Question 6 continued

(ii) (a) a two-tailed test

(A1)

[1 mark]

**Note:** In parts (b) and (c), award no marks to candidates who omit  $\sqrt{36}$ .

$$(b) \quad (i) \quad Z = \frac{\bar{x} - \mu}{\frac{\sigma}{\sqrt{n}}} = \frac{79 - 82}{\frac{8}{\sqrt{36}}} \\ = -2.25$$

(M1)

(A1)

(N2)

$$(ii) \quad 2 \times P(Z > 2.25)$$

(M1)

$$= 0.0244$$

(A1)

since  $0.0244 < 0.05$ , reject  $H_0$

(R1)

(N3)

**Note:** Award (A0) for the answer “reject  $H_0$ ” with no explanation.

[5 marks]

$$(c) \quad Z = \left( \frac{79 - 80}{\frac{8}{\sqrt{36}}} \right) = -0.75$$

(A1)

$$P(Z < -0.75) = 0.227 \quad (3 \text{ s.f.})$$

(A1)

(N2)

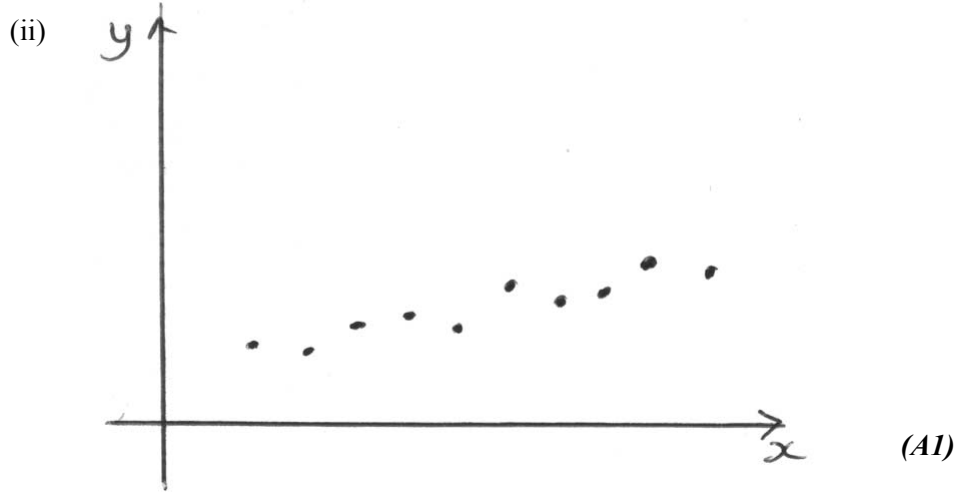
[2 marks]

continued...



Question 6 continued

(iii) (a) (i) minimum value = -1 ; maximum value = 1 (A1)(A1)



(iii) linear, strong positive (A2)

[5 marks]

(b) (i) regression line passes through  $(\bar{x}, \bar{y})$  (M1)

gradient of regression line =  $\frac{49.2 - 46}{660 - 500} = 0.02$  (A1)

equation of regression line:  $\frac{y - 46}{x - 500} = 0.02 \Rightarrow y = 0.02x + 36$  (A1) (N3)

(ii)  $y = \$ 47$  (A1)

[4 marks]

(c)  $46 \pm 1.96 \frac{8.5}{\sqrt{15}}$  (A1)(A1)(A1)

confidence interval is (41.7, 50.3) (A1) (N4)

[4 marks]

Total [30 marks]

**QUESTION 7**

(i) (a)  $x^2 \sin(x^3 + \pi) = 0$  (Accept  $\sin(x^3 + \pi) = 0$  or  $x^3 + \pi = n\pi$ ) (M1)  
 $x = (2\pi)^{\frac{1}{3}}$  (= 1.85) (Accept (1.85, 0)) (A1) (N2)

**[2 marks]**

(b)  $(u = x^3 + \pi) \Rightarrow du = 3x^2 dx$  (M1)  
 $\int f(x) dx = \frac{1}{3} \int \sin u du$  (A1)  
 $= -\frac{1}{3} \cos(x^3 + \pi) + c$  (A1)(A1) (N4)

**Note:** Award the final (A1) for the constant of integration.

**[4 marks]**

(c)  $A = \int_{\frac{1}{\pi^3}}^{(2\pi)^{\frac{1}{3}}} f(x) dx$   
 $= \left[ -\frac{1}{3} \cos(x^3 + \pi) \right]_{\frac{1}{\pi^3}}^{(2\pi)^{\frac{1}{3}}}$  (A1)  
 $= -\frac{1}{3} \{ \cos(2\pi + \pi) - \cos(\pi + \pi) \}$  (A1)  
 $= \frac{2}{3} (= 0.667)$  (A1) (N1)

**[3 marks]**

*continued...*

Question 7 continued

(ii) (a) (i) perimeter of  $R = 2(1+x)$  (A1)

(ii) perimeter of  $Q = 4\sqrt{1+x^2}$  (A1)

[2 marks]

(b)  $g'(x) = \frac{0.5\sqrt{1+x^2} - (0.5)(x+1) \frac{2x}{2\sqrt{1+x^2}}}{(\sqrt{1+x^2})^2}$  (A1)(A1)

**Note:** Award (A1) for correctly using the quotient rule,  
(A1) for using the chain rule correctly to find  $\frac{d}{dx}(\sqrt{1+x^2})$ .

$g'(x) = \frac{0.5(1+x^2) - (0.5)(x+1)x}{(1+x^2)^{\frac{3}{2}}}$  (any evidence of correct simplification) (A1)

$= \frac{0.5(1-x)}{(1+x^2)^{\frac{3}{2}}}$  (AG)

[3 marks]

(c) For seeing  $g'(x) = 0$  in some form (M1)

$0.5(1-x) = 0$  (A1)

$x = 1$  (A1)

maximum value is  $\frac{1}{\sqrt{2}}$  (= 0.707) (A2) (N5)

[5 marks]

(iii) (a)  $f'(x) = 5x^4$  (A1)

$x_{n+1} = x_n - \frac{x_n^5 - 5}{5x_n^4}$  (A1)

$= \frac{4x_n^5 + 5}{5x_n^4}$  (A1)

$= 0.8x_n + \frac{1}{x_n^4}$  (AG)

[3 marks]

continued...

Question 7 (iii) continued

- (b) (i)  $(x_1 = 1)$
- $(x_2 = 1.8)$
- $x_3 = 1.53526$  (A1)
- $x_4 = 1.40821$
- $x_5 = 1.38086$
- $x_6 = 1.379731505 = 1.3797$  (5 s.f.)
- $x_7 = 1.379729661 = 1.3797$  (5 s.f.) (M1)

**Note:** Award (A1) for evidence of N-R method, e.g.  $x_3$  or  $x_4$  or  $x_5$  or  $x_6$ .  
Award (M1) for showing the error is  $< 0.0001$  by showing either there is no change in the 5<sup>th</sup> digit or by comparison with  $\sqrt[5]{5}$ .

- (ii) root = 1.3797 (A1)

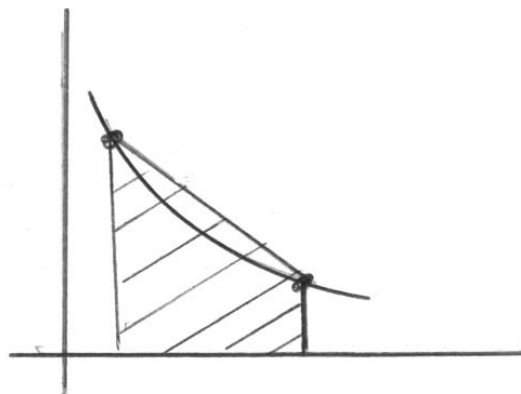
**Note:** Do not award this (A1) if the (M1) is not earned in part (b) above.

[3 marks]

- (iv) (a) area of shaded region  $S = \int_1^2 \frac{1}{x} dx = 0.693(147\dots)$  (A1)  
 $= 0.69315$  (5 s.f.) (correct answer only) (A1)

[2 marks]

- (b) trapezium rule will **overestimate** the area (R1)  
because the graph is concave up or shown in a diagram (R1)



- Carl used trapezium rule (A1)

**Note:** Award (R0)(R0)(A0) for "Carl used trapezium rule" without a (correct) reason.

[3 marks]

Total [30 marks]

**QUESTION 8**

(i) (a) (i)  $H = \begin{pmatrix} 1 & 2 \\ 0 & 1 \end{pmatrix}$  (A1)

(ii)  $S = \begin{pmatrix} 1 & 0 \\ 0 & 2 \end{pmatrix}$  (A1)

(iii)  $R = \begin{pmatrix} 1 & 0 \\ 0 & -1 \end{pmatrix}$  (A1)

[3 marks]

(b)  $H^{-1}$  = shear of scale factor  $-2$  in the direction of the  $x$ -axis (A1)

$S^{-1}$  = stretch of scale factor  $\frac{1}{2}$  in the direction of the  $y$ -axis (A1)

$R^{-1}$  = reflection in the  $x$ -axis (A1)

**Notes:** All components of the description are needed to receive marks.  
Award no marks if the inverse matrix is given.

[3 marks]

(c) (i)  $M = HSR$  (A1)

(ii)  $\begin{pmatrix} 1 & -4 \\ 0 & -2 \end{pmatrix} \begin{pmatrix} x \\ y \end{pmatrix} = \begin{pmatrix} x \\ y \end{pmatrix}$  (M1)

$\left. \begin{matrix} x - 4y = x \\ -2y = y \end{matrix} \right\}$  (A1)

all points  $(x, 0)$  are invariant under  $M$ . (A2) (N3)

(iii) **EITHER**

$\begin{pmatrix} 1 & -4 \\ 0 & -2 \end{pmatrix} \begin{pmatrix} t \\ -t+2 \end{pmatrix} = \begin{pmatrix} 5t-8 \\ 2t-4 \end{pmatrix}$  (A1)

**OR**

$\begin{matrix} x = 5t - 8 \\ y = 2t - 4 \end{matrix}$  (A1)

**THEN**

Image  $y = \frac{2}{5}x - \frac{4}{5}$  (A1)(A1) (N2)

**Notes:** One alternative method is to find two points on  $y = -x + 2$ , find their images and then find the line between them. Another valid alternative method is to express  $x$  and  $y$  in terms of  $x'$  and  $y'$  using  $M^{-1}$ .

[8 marks]

continued...

Question 8 (i) continued

(d) (i)  $M\mathbf{u} = \begin{pmatrix} -3 \\ 2 \end{pmatrix}, M\mathbf{v} = \begin{pmatrix} 4 \\ -1 \end{pmatrix}$  (A1)

(ii)  $M\mathbf{w} = 3M\mathbf{u} - 2M\mathbf{v}$  (or  $= 3\begin{pmatrix} -3 \\ 2 \end{pmatrix} - 2\begin{pmatrix} 4 \\ -1 \end{pmatrix}$ ) (M1)

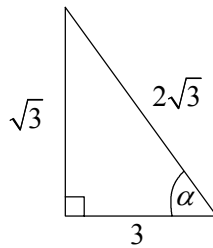
$a = -17; b = 8$  (A1)(A1) (N2)

**Note:**  $\mathbf{u}$  and  $\mathbf{v}$  may be found using  $M^{-1}$ .

[4 marks]

(ii) (a) (i)

**EITHER**



(M1)

**OR**

$$\tan \alpha = \frac{\sqrt{3}}{3}$$

(M1)

**THEN**

$$\sin \alpha = \frac{1}{2}, \cos \alpha = \frac{\sqrt{3}}{2}$$
 (A1)

$$\mathbf{F} = \begin{pmatrix} \cos 2\alpha & \sin 2\alpha \\ \sin 2\alpha & -\cos 2\alpha \end{pmatrix} = \begin{pmatrix} \frac{1}{2} & \frac{\sqrt{3}}{2} \\ \frac{\sqrt{3}}{2} & -\frac{1}{2} \end{pmatrix}$$
 (A1)(A1) (N3)

(ii) (0, 2) (or any point on L) is invariant under T. (M1)

$$\begin{pmatrix} \frac{1}{2} & \frac{\sqrt{3}}{2} \\ \frac{\sqrt{3}}{2} & -\frac{1}{2} \end{pmatrix} \begin{pmatrix} 0 \\ 2 \end{pmatrix} + \begin{pmatrix} h \\ k \end{pmatrix} = \begin{pmatrix} 0 \\ 2 \end{pmatrix}$$
 (A1)

$h = -\sqrt{3}, k = 3$  (A1)(A1)

vector  $\begin{pmatrix} -\sqrt{3} \\ 3 \end{pmatrix}$  (N3)

[8 marks]

continued...

Question 8 (ii) continued

(b) (i) **EITHER**

$$\begin{pmatrix} \frac{1}{2} & \frac{\sqrt{3}}{2} \\ \frac{\sqrt{3}}{2} & -\frac{1}{2} \end{pmatrix} \begin{pmatrix} 0 \\ 0 \end{pmatrix} + \begin{pmatrix} -\sqrt{3} \\ 3 \end{pmatrix} = \begin{pmatrix} -\sqrt{3} \\ 3 \end{pmatrix} \quad (R1)$$

**OR**

$$T \begin{pmatrix} 0 \\ 0 \end{pmatrix} = \begin{pmatrix} h \\ k \end{pmatrix} = \begin{pmatrix} -\sqrt{3} \\ 3 \end{pmatrix} \quad (R1)$$

(ii)  $d = \frac{1}{2}$  distance from  $(0, 0)$  to  $T(0, 0)$ . (M1)

$$d = \frac{1}{2} \sqrt{(-\sqrt{3})^2 + 3^2} \quad (A1)$$

$$d = \sqrt{3} \quad (A1) \quad (N2)$$

[4 marks]

Total [30 marks]

---