

MARKSCHEME

November 2002

MATHEMATICAL STUDIES

Standard Level

Paper 2

Paper 2 Markscheme

Instructions to Examiners

1 Method of marking

- (a) All marking must be done using a **red** pen.
- (b) Marks should be noted on candidates' scripts as in the markscheme:
 - show the breakdown of individual marks using the abbreviations *(M1), (A2) etc.*
 - write down each part mark total, indicated on the markscheme (for example, *[3 marks]*) – it is suggested that this be written at the end of each part, and underlined;
 - write down and circle the total for each question at the end of the question.

2 Abbreviations

The markscheme may make use of the following abbreviations:

M Marks awarded for **Method**

A Marks awarded for an **Answer** or for **Accuracy**

G Marks awarded for correct solutions, generally obtained from a **Graphic Display Calculator**, irrespective of working shown

C Marks awarded for **Correct** statements

R Marks awarded for clear **Reasoning**

AG **Answer Given** in the question and consequently marks are **not** awarded

3 Follow Through (ft) Marks

Questions in this paper were constructed to enable a candidate to:

- show, step by step, what he or she knows and is able to do;
- use an answer obtained in one part of a question to obtain answers in the later parts of a question.

Thus errors made at any step of the solution can affect all working that follows. Furthermore, errors made early in the solution can affect more steps or parts of the solution than similar errors made later.

To limit the severity of the penalty for errors made at any step of a solution, **follow through (ft)** marks should be awarded. The procedures for awarding these marks require that all examiners:

- (i) penalise an error when it **first occurs**;
- (ii) **accept the incorrect answer** as the appropriate value or quantity to be used in all subsequent parts of the question;

- (iii) award **M** marks for a correct method, and **A(ft)** marks if the subsequent working contains no further errors.

Follow through procedures may be applied repeatedly throughout the same problem.

The errors made by a candidate may be: arithmetical errors; errors in algebraic manipulation; errors in geometrical representation; use of an incorrect formula; errors in conceptual understanding.

The following illustrates a use of the **follow through** procedure:

Markscheme		Candidate's Script	Marking
$\$ 600 \times 1.02$	MI	Amount earned = $\$ 600 \times 1.02$	✓ MI
= $\$ 612$	AI	= $\$602$	× A0
$\$ (306 \times 1.02) + (306 \times 1.04)$	MI	Amount = $301 \times 1.02 + 301 \times 1.04$	✓ MI
= $\$ 630.36$	AI	= $\$ 620.06$	✓ AI(ft)

Note that the candidate made an arithmetical error at line 2; the candidate used a correct method at lines 3, 4; the candidate's working at lines 3, 4 is correct.

However, if a question is transformed by an error into a **different, much simpler question** then:

- (i) **fewer** marks should be awarded at the discretion of the Examiner;
- (ii) marks awarded should be followed by '**(d)**' (to indicate that these marks have been awarded at the **discretion** of the Examiner);
- (iii) a brief **note** should be written on the script explaining **how** these marks have been awarded.

4 Using the Markscheme

- (a) This markscheme presents a particular way in which each question may be worked and how it should be marked. **Alternative methods** have not always been included. Thus, if an answer is wrong then the working must be carefully analysed in order that marks are awarded for a different method in a manner which is consistent with the markscheme.

In this case:

- (i) a mark should be awarded followed by '**(d)**' (to indicate that these marks have been awarded at the **discretion** of the Examiner);
- (ii) a brief **note** should be written on the script explaining **how** these marks have been awarded.

Alternative solutions are indicated by **OR**. Where these are accompanied by **G** marks, they usually signify that the answer is acceptable from a graphic display calculator without showing working. For example:

$$\begin{aligned} \text{Mean} &= 7906/134 && \text{(M1)} \\ &= 59 && \text{(A1)} \end{aligned}$$

OR

$$\text{Mean} = 59 \qquad \qquad \qquad \text{(G2)}$$

- (b) Unless the question specifies otherwise, accept **equivalent forms**. For example: $\frac{\sin \theta}{\cos \theta}$ for $\tan \theta$.
These equivalent numerical or algebraic forms may be written in brackets after the required answer.
- (c) As this is an international examination, all **alternative forms of notation** should be accepted. For example: 1.7, 1·7, 1,7; different forms of vector notation such as \vec{u} , \overline{u} , \underline{u} ; $\tan^{-1} x$ for $\arctan x$.

5 Accuracy of Answers

There are two types of accuracy errors, incorrect level of accuracy, and rounding errors. Unless the level of accuracy is specified in the question, candidates should be penalized **once only IN THE PAPER** for any accuracy error (**AP**). This could be an incorrect level of accuracy, or a rounding error. Hence, on the **first** occasion in the paper when a correct answer is given to the wrong degree of accuracy, or rounded incorrectly, maximum marks are **not** awarded, but on **all subsequent occasions** when accuracy errors occur, then maximum marks **are** awarded.

There are also situations (particularly in some of the options) where giving an answer to more than 3 significant figures is acceptable. This will be noted in the markscheme.

(a) Level of accuracy

- (i) In the case when the accuracy of the answer is **specified in the question** (for example: “find the size of angle A to the nearest degree”) the maximum mark is awarded **only if** the correct answer is given to the accuracy required.
- (ii) When the accuracy is **not** specified in the question, then the general rule applies:

Unless otherwise stated in the question, all numerical answers must be given exactly or to three significant figures.

(b) Rounding errors

Rounding errors should only be penalized at the **final answer** stage. This does **not** apply to intermediate answers, only those asked for as part of a question. Premature rounding which leads to incorrect answers should only be penalized at the answer stage.

Incorrect answers are wrong, and should not be considered under (a) or (b).

Examples

A question leads to the answer 4.6789....

- 4.68 is the correct 3 s.f. answer.
- 4.7, 4.679 are to the wrong level of accuracy, and should be penalised the first time this type of error occurs.
- 4.67 is incorrectly rounded – penalise on the first occurrence.

Note: All these “incorrect” answers may be assumed to come from 4.6789..., even if that value is not seen, but previous correct working is shown. However, 4.60 is wrong, as is 4.5, 4.8, and these should be penalised as being incorrect answers, not as examples of accuracy errors.

Markscheme		Candidate's Script (A)	Marking
(a) $a = 2.31 \times 3.43$ $= 7.9233 = 7.92$ (3 s.f.)	MI AI	(a) $a = 2.31 \times 3.43$ $= 7.9233 = 7.92$	MI AI
(b) $2a = 2 \times 7.9233$ $= 15.8466 = 15.8$ (3 s.f.)	AI AI	(b) $2a = 2 \times 7.29 = 14.58$ $= 14.5$	A0 A0(AP)
		Total	2 marks

Notes: Award **AI** for either the exact answer 7.9233 or the 3 s.f. answer 7.92.

In line 3, Candidate A has incorrectly transcribed the answer for part (a), but then performs the calculation correctly, and would normally gain the follow through marks. However, the final answer is incorrectly rounded, and the **AP** applies.

Candidate's Script (B)	Marking	Candidate's Script (C)	Marking
(a) $a = 2.31 \times 3.43 = 7.9233$ $= 7.92$	MI AI	(a) $a = 2.31 \times 3.43 = 7.9233$ $= 7.93$	MI A0(AP)
(b) $2a = 2 \times 7.9233$ $= 15.8466 = 15.85$	AI A0(AP)	(b) $2a = 2 \times 7.93$ $= 15.86 = 15.8$	AI(ft) AI(ft)
Total	3 marks	Total	3 marks

Notes: Candidate B has given the answer to part (b) to the wrong level of accuracy, **AP** applies.

Candidate C has incorrectly rounded the answers to both parts (a) and (b), is penalised (**AP**) on the first occurrence (line 2), and awarded follow through marks for part (b).

Candidate's Script (D)	Marking	Candidate's Script (E)	Marking
(a) $a = 2.31 \times 3.43$ $= 7.923 = 7.9$	MI A0(AP)	(a) $a = 2.31 \times 3.43 = 7.923$ $= 7.93$	MI A0(AP)
(b) $2a = 2 \times 7.923$ $= 19.446 = 19.5$	AI(ft) A0	(b) $2a = 2 \times 7.93$ $= 15.86$	AI(ft) AI(ft)
Total	2 marks	Total	3 marks

Notes: Candidate D has given the answer to part (a) to the wrong level of accuracy, and therefore loses 1 mark (**AP**). The answer to part (b) is wrong.

Candidate E has incorrectly rounded the answer to part (a), therefore loses 1 mark (**AP**), is awarded follow through marks for part (b), and does **not** lose a mark for the wrong level of accuracy.

6 Graphic Display Calculators

Many candidates will be obtaining solutions directly from their calculators, often without showing any working. They have been advised that they must use mathematical notation, not calculator commands when explaining what they are doing. Incorrect answers without working will receive no marks. However, if there is written evidence of using a graphic display calculator correctly, method marks may be awarded. Where possible, examples will be provided to guide examiners in awarding these method marks.

1. (i) (a) 63 kg (A1)
[1 mark]

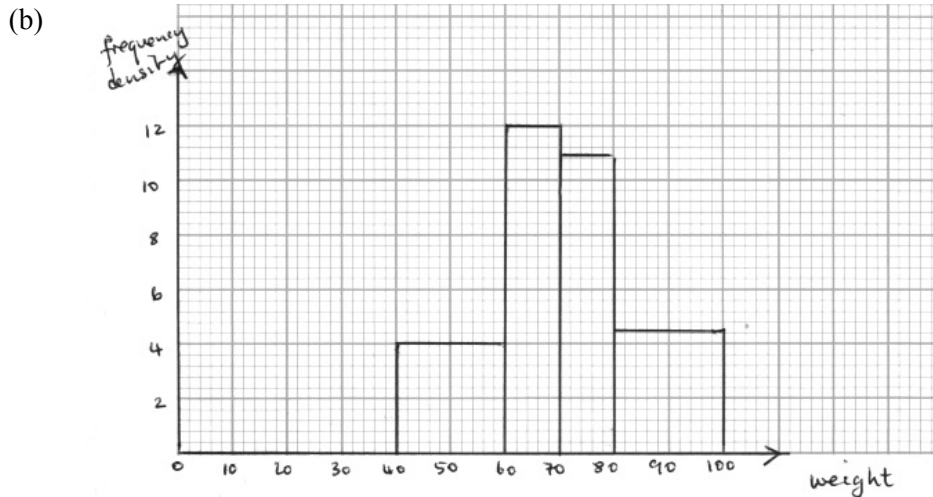
(b) (i) 70.5 kg (G1)

(ii) 14.6 kg (also accept 15.2 kg) (G1)
[2 marks]

(c) Total weight of 12 students = 846 kg (M1)
 Total weight of 11 students = $11 \times 70 = 770$ kg (A1)

Weight of student who left = $846 - 770 = 76$ kg (A1)
[2 marks]

(ii) (a) $s = 4$ $t = 11$ (A1)(A1)
[2 marks]



(A1)(A2)

Notes: Award (A1) for axes with correct scales and labelling.
 Award (A2) for 3 or 4 bars correct, (A1) for 2 bars correct.

[3 marks]

(c) $P(< 70) = \frac{200}{400} \left(= \frac{1}{2} = 0.5 = 50\% \right)$ (M1)(A1)

[2 marks]

Total [12 marks]

2. (a) $y \geq 2x$ because the number of canoes (y) has to be at least two times the number of kayaks (x).

(R1)

[1 mark]

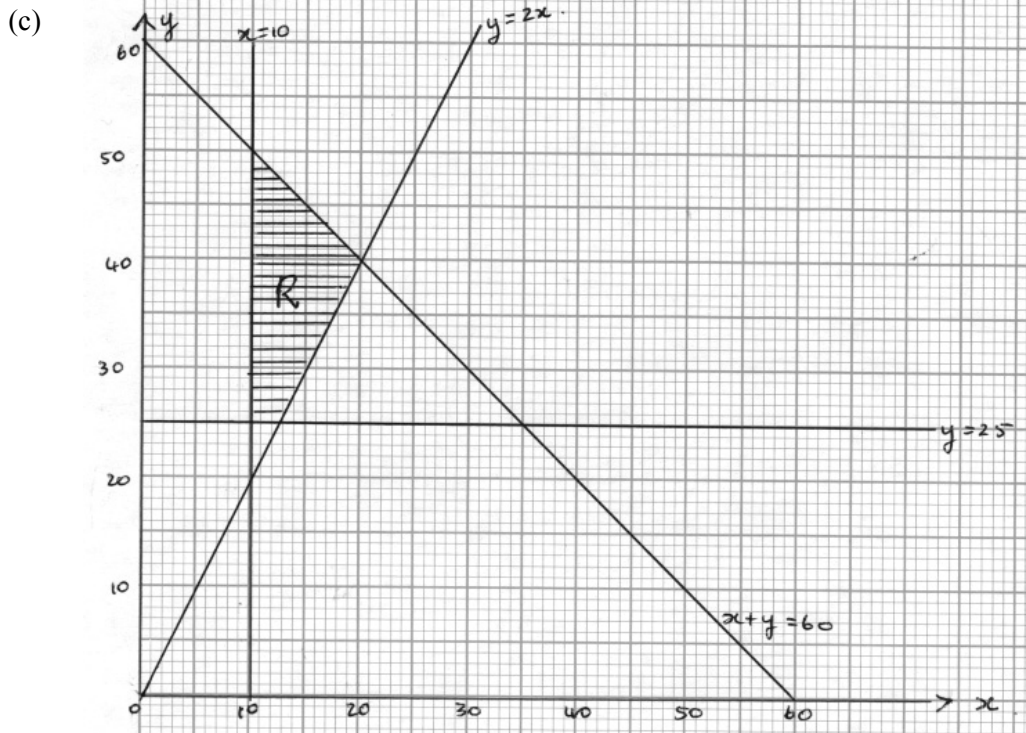
- (b) $x \geq 10$
 $y \geq 25$
 $x + y \leq 60$

(A1)

(A1)

(A1)

[3 marks]



(A5)

Note: Award (A1) for axes clearly labelled and with correct scales, (A1) for each correct line.

[5 marks]

- (d) (i) R in correct place.

(A1)

- (ii) Vertices are $(10, 25)$, $(10, 50)$, $(20, 40)$, $(12\frac{1}{2}, 25)$

(A2)

Note: Award (A2) for 3 or 4 correct entries, (A1) for 2 correct vertices.

[3 marks]

- (e) $A = 25x + 40y$

(A1)

[1 mark]

- (f) $(10, 50) \Rightarrow A = 25 \times 10 + 40 \times 50 = \text{£ } 2250$
 $(20, 40) \Rightarrow A = 25 \times 20 + 40 \times 40 = \text{£ } 2100$
 Maximum amount is £ 2250

(M1)

(A1)

[2 marks]

Total [15 marks]

3. (a) Choice A = $100 \times 12 = \$1200$ (A1)
- Choice B = $1100 \left(1 + \frac{12}{1200}\right)^{12} = \1239.51 (M1)(A1)
- Choice C = $75 + 80 + \dots$ (M1)
- $= \frac{12}{2} \{2 \times 75 + 11 \times 5\} = \1230 (A1)
- Choice D = $80 + 80 \times 1.05 + 80 \times 1.05^2 + \dots$ (M1)
- $= \frac{80(1.05^{12} - 1)}{(1.05 - 1)} = \1273.37 (M1)(A1)

Note: Award method marks if candidate works out each amount. But the answer has to be accurate to receive the mark of (A1).

[8 marks]

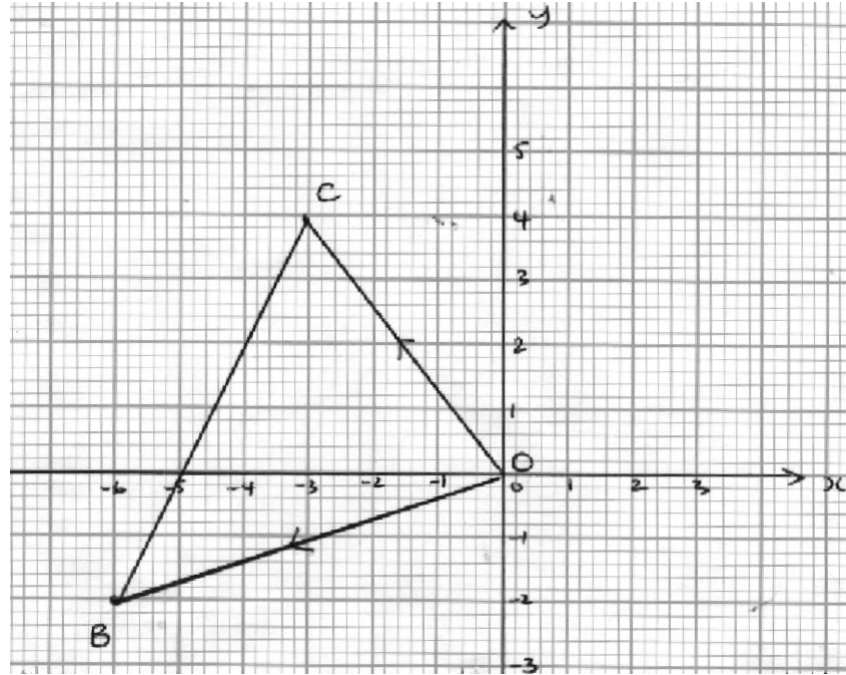
- (b) Option D because the total allowance is the highest. (C1)(R1)
- [2 marks]

- (c) $1200 \left(1 + \frac{r}{100}\right)^2 = 1452$ (A1)
- $\left(1 + \frac{r}{100}\right)^2 = \frac{1452}{1200} = 1.21$ (A1)
- $\left(1 + \frac{r}{100}\right) = \sqrt{1.21} = 1.1$ (A1)
- $\frac{r}{100} = 0.1$
- $r = 10\%$ (A1)

[4 marks]

Total [14 marks]

4. (a) (i)



(A3)

Notes: Award (A1) for axes correctly labelled, with correct scales.
Award (A1) for \vec{OC} and (A1) for \vec{OB} .

(ii) $\vec{CB} = \begin{pmatrix} -3 \\ -6 \end{pmatrix}$ (A1)

(iii) $|\vec{CB}| = \sqrt{(-3)^2 + (-6)^2} = \sqrt{45} (= 6.71 \text{ km, 3 s.f.})$ (M1)(A1)

[6 marks]

(b) (i) Length of path = $6.32 + 5 + 6.71 = 18.0 \text{ km}$ (A1)

(ii) $\cos \hat{B}OC = \frac{6.32^2 + 5^2 - 6.71^2}{2 \times 6.32 \times 5} = 0.315 \dots$ (M1)(A1)

Therefore, $\hat{B}OC = 71.6^\circ$ (A1)

(iii) Area lake = $\frac{1}{2} \times 6.32 \times 5 \times \sin 71.6^\circ = 15.0 \text{ km}^2$ (M1)(A1)

[6 marks]

(c) Distance = $\sqrt{(-3 - (-2))^2 + (4 - 2)^2 + (0.8 - 0)^2}$ (M1)
 $= \sqrt{1 + 4 + 0.64}$
 $= \sqrt{5.64} = 2.37 \text{ km}$ (A1)

[2 marks]

Total [14 marks]

5. (a) $p = 4 + 1 = 5 \text{ cm}$

(M1)(A1)
[2 marks]

(b) (i) $\frac{360^\circ}{60} \times 10 = 60^\circ$

(M1)(A1)

OR

60°

(A2)

(ii) $\cos 60^\circ = \frac{x}{2}$

(M1)

$\Rightarrow x = 2 \cos 60^\circ = 1$

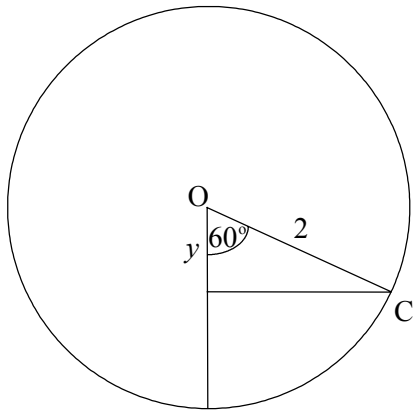
(A1)

(iii) $q = 1 + 2 + 1 = 4 \text{ cm}$

(A1)

[5 marks]

(c)



$\cos 60^\circ = \frac{y}{2}$

(M1)

$\Rightarrow y = 2 \cos 60^\circ = 1$

(A1)

Therefore, $2 - 1 = 1$

(A1)

so, $r = 1 + 1 = 2 \text{ cm}$.

(A1)

[4 marks]

(d) $\frac{(\text{Maximum value} - \text{minimum value})}{2}$

$= \frac{(5 - 1)}{2} = 2$

(M1)

Therefore, $c = 1 + 2 = 3$

(A1)

$k = \text{amplitude} = 5 - 3 = 2$

(M1)(A1)

[4 marks]

Total [15 marks]

6. (i) (a) $B - 2C = \begin{pmatrix} -3 & 5 \\ -6 & 2 \\ 0 & -1 \end{pmatrix} - \begin{pmatrix} 14 & 8 \\ -6 & -2 \\ -12 & 4 \end{pmatrix} = \begin{pmatrix} -17 & -3 \\ 0 & 4 \\ 12 & -5 \end{pmatrix}$ (A2)

Note: Award (A1) for 2C, and (A1) for answer.

[2 marks]

(b) $A^T = \begin{pmatrix} 2 & y \\ x & 1 \end{pmatrix}$ (A1)

$$\begin{pmatrix} 4 & 2x \\ 2y & 2 \end{pmatrix} + \begin{pmatrix} 2 & y \\ x & 1 \end{pmatrix} = \begin{pmatrix} p & -6 \\ 3 & q \end{pmatrix}$$

$4 + 2 = p \Rightarrow p = 6$ (A1)

$2 + 1 = q \Rightarrow q = 3$ (A1)

$\left. \begin{matrix} 2x + y = -6 \\ 2y + x = 3 \end{matrix} \right\} \Rightarrow \begin{matrix} x = -5 \\ y = 4 \end{matrix}$ by substitution or simultaneous equations (A1)

(A1)

[5 marks]

(c) $2m^2 - 32 = 0$ (M1)

$\Rightarrow m^2 = 16$

$\Rightarrow \begin{cases} m = 4 \\ m = -4 \end{cases}$ (A1)

(A1)

[3 marks]

(d) $F^2 = \begin{pmatrix} n & 3 \\ 3 & -n \end{pmatrix} \begin{pmatrix} n & 3 \\ 3 & -n \end{pmatrix} = \begin{pmatrix} n^2 + 9 & 0 \\ 0 & n^2 + 9 \end{pmatrix}$ (A1)

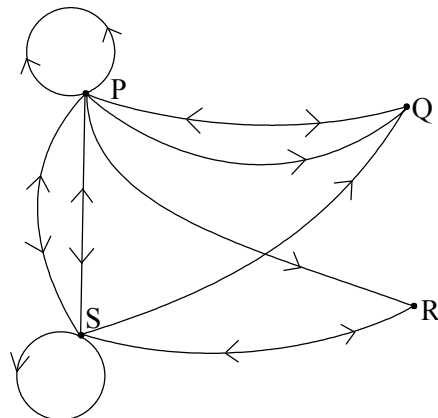
$9I = \begin{pmatrix} 9 & 0 \\ 0 & 9 \end{pmatrix}$ (A1)

$F^2 = 9I \Rightarrow n^2 + 9 = 9$ (M1)

$\Rightarrow n^2 = 0 \Rightarrow n = 0$ (AG)

[3 marks]

(ii) (a)



(A4)

Note: Award (A1) for correct roads coming from each of the vertices P, Q, R, and S. No arrows on a road implies a two-way flow of traffic.

[4 marks]

continued...

Question 6 (ii) continued

$$(b) \begin{pmatrix} 2 & 2 & 1 & 2 \\ 1 & 0 & 0 & 0 \\ 0 & 0 & 0 & 1 \\ 2 & 1 & 1 & 1 \end{pmatrix} \begin{pmatrix} 2 & 2 & 1 & 2 \\ 1 & 0 & 0 & 0 \\ 0 & 0 & 0 & 1 \\ 2 & 1 & 1 & 1 \end{pmatrix} = \begin{pmatrix} (4+2+0+4) & - & - & - \\ - & - & - & - \\ - & - & - & - \\ - & (4+0+0+1) & - & - \end{pmatrix}$$

$a = 4 + 2 + 0 + 4 = 10$

$b = 4 + 0 + 0 + 1 = 5$

(M1)(A1)

(M1)(A1)

OR

$a = 10, b = 5$

(G2)(G2)

[4 marks]

(c) 7 ways

(A1)

[1 mark]

(iii) (a)

		cinema	not cinema
cinema	$\begin{pmatrix} 0.8 & \mathbf{0.3} \\ \mathbf{0.2} & \mathbf{0.7} \end{pmatrix}$		
not cinema			

(A1)

(A1)(A1)

[3 marks]

(b) 60 % of 200 = 120

(A1)

[1 mark]

$$(c) \begin{pmatrix} 0.8 & 0.3 \\ 0.2 & 0.7 \end{pmatrix} \begin{pmatrix} 120 \\ 80 \end{pmatrix} = \begin{pmatrix} 0.8 \times 120 + 0.3 \times 80 \\ 0.2 \times 120 + 0.7 \times 80 \end{pmatrix} = \begin{pmatrix} 120 \\ 80 \end{pmatrix}$$

(M1)

Therefore, 120 will visit the cinema next weekend.

(A1)

[2 marks]

$$(d) \begin{pmatrix} 0.7 & 0.45 \\ 0.3 & 0.55 \end{pmatrix} \begin{pmatrix} 120 \\ 80 \end{pmatrix} = \begin{pmatrix} - & - & - & - \\ 0.3 \times 120 + 0.55 \times 80 \end{pmatrix} = \begin{pmatrix} - \\ 80 \end{pmatrix}$$

(M1)

Therefore, 80 students will not visit the cinema two weekends from now.

(A1)

[2 marks]

Total [30 marks]

7. (i) (a) (i) $P(W \geq 20) = 1 - P\left(Z < \frac{20 - 18.5}{5}\right)$
 $= 1 - P(Z < 0.3)$ (M1)
 $\Phi(0.3) = 0.6179$
Therefore, $P(W \geq 20) = 1 - 0.6179 = 0.3821$ (A1)

OR

$P(W \geq 20) = 0.3821$ (G2)

So, number who lost 20 kg or more = 0.3821×500
= 191 members (A1)

(ii) $P(W < 15) = P\left(Z < \frac{15 - 18.5}{5}\right) = P(Z < -0.7)$ (M1)
 $\Phi(0.7) = 0.758$
 $P(W < 15) = 1 - 0.758 = 0.242$ (A1)

OR

$P(W < 15) = 0.242$ (G2)

Therefore, number who lost less than 15 kg. = 0.242×500
= 121 members (A1)

[6 marks]

(b) $a = 121 - 22 = 99$ (A1)
 $b = 191 - (43 + 5) = 143$ (A1)

[2 marks]

(c) (i) H_0 : The observed frequencies fit a normal distribution with mean 18.5 kg and standard deviation 5 kg. (A1)

(ii) degrees of freedom = 5 (A1)

(iii) $\chi^2_{\text{calc}} = \frac{\sum (f_e - f_o)^2}{f_e}$ (M1)
 $\chi^2 = \frac{(22 - 24)^2}{22} + \frac{(99 - 70)^2}{99} + \frac{(188 - 131)^2}{188} + \frac{(143 - 164)^2}{143} + \frac{(43 - 83)^2}{43} + \frac{(5 - 28)^2}{5}$ (A1)
= 172 (A1)

(iv) $\chi^2_5 = 11.07$ (A1)

(v) Reject H_0 : since $172 > 11.07$ (A1)(R1)

[8 marks]

Question 7 continued

(ii) (a) (i) 1992 mean = \$ 1.59, Sd = \$ 0.727 (or 0.73) (accept 0.777 or 0.78) (A1)(A1)

(ii) 2002 mean = \$ 1.98, Sd = \$ 0.635 (or 0.64) (accept 0.679 or 0.68) (A1)(A1)

[4 marks]

(b) (i) $r = \frac{0.3104}{0.73 \times 0.64} = 0.664$ (or $\frac{0.3104}{0.727 \times 0.635} = 0.672$) (or $\frac{0.3104}{0.777 \times 0.679} = 0.588$) (M1)(A1)

OR

$r = 0.672$ (G2)

(ii) There is a **weak positive** correlation (R1)(R1)

[4 marks]

(c) $y - 1.98 = \frac{0.3104}{(0.73)^2} (x - 1.59)$ (M1)

$y = 0.582x + 1.05$ (A1)(A1)

OR

$y - 1.98 = \frac{0.3104}{(0.727)^2} (x - 1.59)$ (M1)

$y = 0.587x + 1.05$ (A1)(A1)

OR

$y = 0.588x + 1.05$ (G3)

[3 marks]

(d) $y = 0.582 \times 2.60 + 1.05$
 $= \$ 2.56$ (A1)

OR

$y = 0.587 \times 2.60 + 1.05$
 $= \$ 2.58$ (A1)

OR

$y = 0.588 \times 2.60 + 1.05$
 $= \$ 2.58$ (A1)

[1 mark]

(e) Coffee – because it is the only item to go down in price (A1)(R1)

OR

Rolls – because the price increased significantly. (A1)(R1)

[2 marks]

Total [30 marks]

8. (i) (a) (i) $f'(x) = 6x^2 - 6x - 12 (+0) = 6x^2 - 6x - 12$ (A2)

Note: Award (A2) for all four items correctly differentiated, (A1) for 3 correct derivatives.

(ii) $f'(3) = 6(3)^2 - 6(3) - 12 = 24$ (M1)(A1)

[4 marks]

(b) $6x^2 - 6x - 12 = -12$ (M1)

$\Rightarrow 6x^2 - 6x = 0$

$\Rightarrow 6x(x - 1) = 0$

$\Rightarrow x = 0$ or $x = 1$

(A1)(A1)

[3 marks]

(c) (i) $f'(x) = 0 \Rightarrow 6x^2 - 6x - 12 = 0$ (M1)

$\Rightarrow 6(x^2 - x - 2) = 0$

$\Rightarrow 6(x - 2)(x + 1) = 0$ (M1)

$\Rightarrow x = 2$ or $x = -1$ (A1)(A1)

(ii) $x = 2, y = -15$ (A1)

Therefore, minimum is (2, -15) (A1)

[6 marks]

(d) $x < -1$ and $x > 2$ (A1)(A1)

[2 marks]

(ii) (a) $s(50) = 250(50) + 5(50)^2 - 0.06(50)^3$
 $= 17500$ m (A1)

[1 mark]

(b) (i) 1 second = $\frac{1}{60}$ minute (M1)

50 m and 1 sec = $50 \frac{1}{60}$ minute (AG)

(ii) $s\left(50 \frac{1}{60}\right) = 250\left(50 \frac{1}{60}\right) + 5\left(50 \frac{1}{60}\right)^2 - 0.06\left(50 \frac{1}{60}\right)^3$ (M1)

$= 17505$ (A1)

(iii) $\frac{17505 - 17500}{\frac{1}{60}} = \frac{5}{\frac{1}{60}}$ (M1)

$= 300$ m per minute (A1)

[5 marks]

continued...

Question 8 (ii) continued

(c) (i) $v = s'(t) = 250 + 10t - 0.18t^2$ (A2)

Note: Award (A2) for all 3 terms correctly differentiated, (A1) for 2 terms correct.

(ii) $v(50) = 250 + 10(50) - 0.18(50)^2$
 $= 300$ (A1)

[3 marks]

(d) Part (b)(iii) gives the gradient function for a small change in time from 50 to $50\frac{1}{60}$ minute. Part (c)(ii) gives the velocity when $t = 50$. (R1)

Since $v = s'(t) = \text{Limit}_{h \rightarrow 0} \frac{s(t+h) - s(t)}{h}$, we would expect these two values to be almost the same. (R1)

[2 marks]

(iii) $g'(x) = x^2 - 2x + 5$
 $g(x) = \frac{1}{3}x^3 - x^2 + 5x + c$ (A2)

Note: Award (A2) for all terms correctly integrated, (A1) for 2 terms correctly integrated.

Passes through (3, 5)
 $\Rightarrow 5 = \frac{1}{3}(3)^3 - (3)^2 + 5(3) + c$ (M1)

$\Rightarrow 5 = 9 - 9 + 15 + c$

$\Rightarrow c = -10$

Therefore, $g(x) = \frac{1}{3}x^3 - x^2 + 5x - 10$ (A1)

[4 marks]

Total [30 marks]
