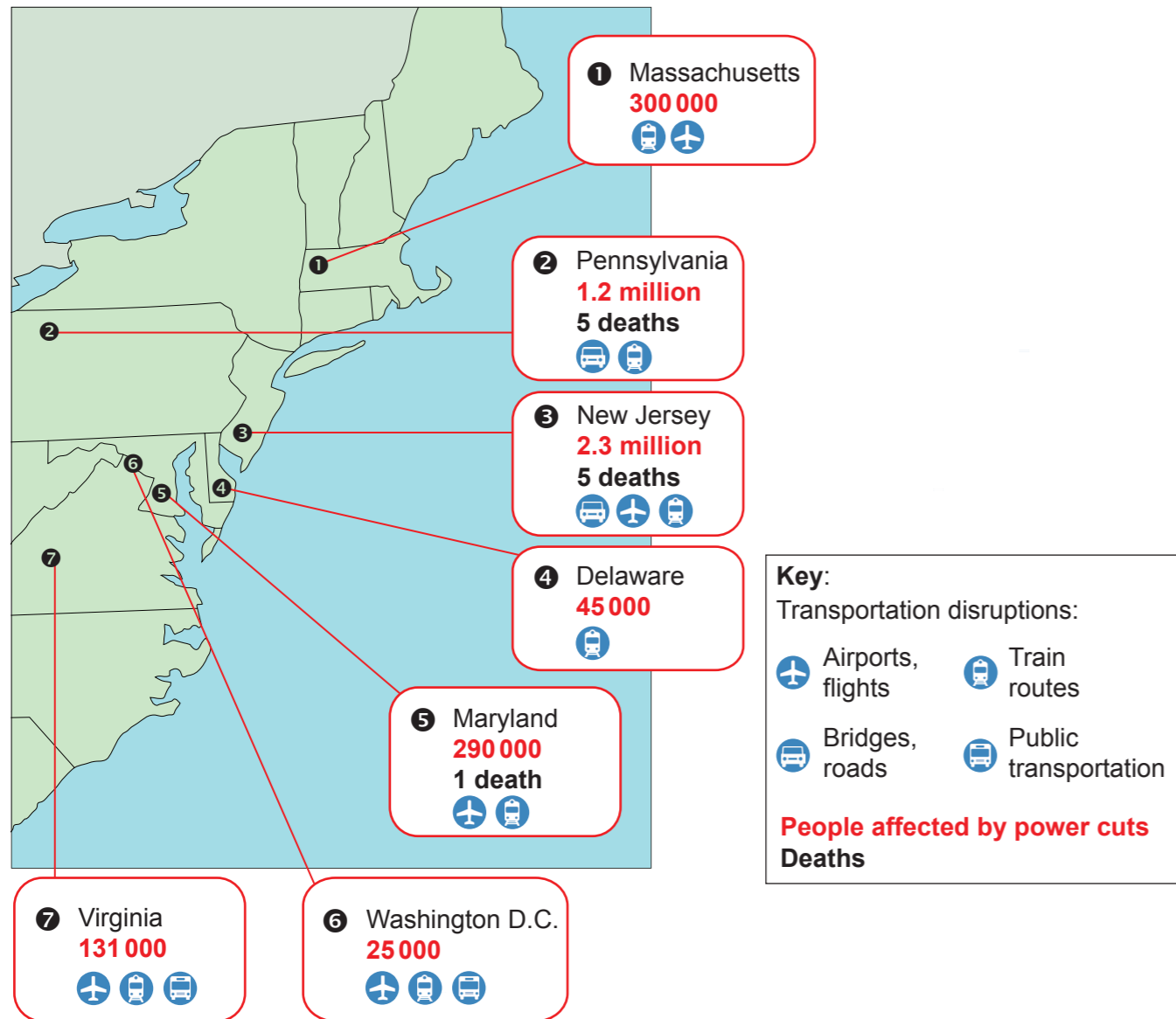


**Option D — Hazards and disasters – risk assessment and response**

8. The map shows the impacts of Hurricane Sandy on selected states in the eastern USA in 2012.



[Source: © International Baccalaureate Organization 2016]

**Geography**  
**Higher level and standard level**  
**Paper 2 – resources booklet**

Tuesday 17 May 2016 (morning)

**Instructions to candidates**

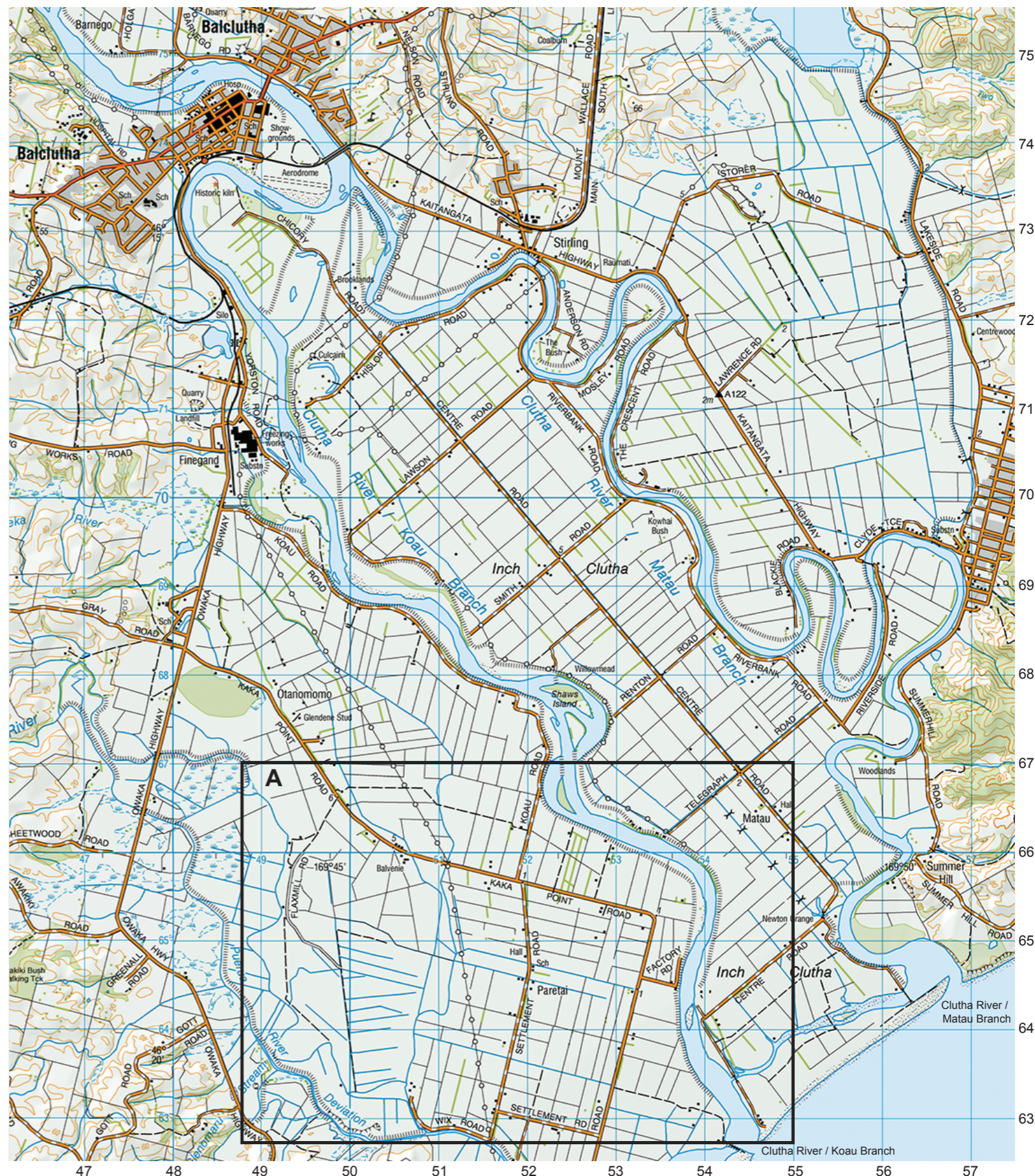
- Do not open this resources booklet until instructed to do so.
- Use the resources as appropriate to the questions in paper 2.

**Option A — Freshwater – issues and conflicts**

1. The map shows the Clutha River and the town Balclutha in the South Island of New Zealand. The scale of the map is 1:50 000 and the contour interval is 100 metres.

**Key:**

<b>Roads and tracks</b>		<b>Relief features</b>	
State highway		Index contour	
Two lanes (include passing lanes)		Intermediate contours	
Narrow road		Perennial snow and ice contours	
Vehicle track		Supplementary contour	
Foot track		Depression contours	
Road sealed		Shallow depression, small depression or shaft	
Road metalled surface		Beaconed trig station (with trig identification code)	
Road unmetalled		Elevation in metres	
Tunnel, tunnel under road		Cliff, terrace, slip	
Bridge; two lane, one lane		Rock outcrops	
Footbridge, cableway or handwire		Stopbank (artificial levee), cutting	
		Embankment or causeway	
<b>Railways</b>		<b>Water features</b>	
Single track		Coastal rocks	
Railway station, yard or siding		Sand and mud	
Bridge, tunnel		Sand	
Level crossing		Shingle	
Road over railway		Swamp	
Railway over road		Boat ramp	
<b>Miscellaneous</b>		Breakwater, wharf, jetty	
Residential area		Slipway	
Large buildings		Marine farm, seawall	
Isolated building		Dam, floodgate, weir	
Homestead, stockyard		Waterfall, rapids	
Glasshouse or greenhouse		Cold spring, hot spring	
Church, cemetery, grave		Watercourse, drain	
Golf course, helipad		Canal; large, small	
Historic Māori pa, redoubt, monument, plaque or signpost		Steam disappearing into ground	
Reservoir covered, reservoir uncovered, tank		<b>Vegetation features</b>	
Fence (selection only)		Native forest	
Pipeline above ground		Exotic coniferous forest	
Pipeline underground		Exotic non-coniferous forest	
Disused water race		Scrub	
Power line on pylons (actual positions)		Scattered scrub	
Power lines on poles (away from farm roads)		Shelter belt	
Telephone line (away from roads)		Trees	
Industrial cableway		Orchard or vineyard	
Mine; underground, opencast			



[Source: Sourced from NZTopo Database. Crown Copyright Reserved.]