



**GEOGRAPHY
HIGHER LEVEL AND STANDARD LEVEL
PAPER 2 – RESOURCES BOOKLET**

Wednesday 17 November 2010 (morning)

INSTRUCTIONS TO CANDIDATES

- Do not open this resources booklet until instructed to do so.
- Use the resources as appropriate to the questions in paper 2.

C11. Topographic mapping

The map shows the area around Zeebrugge; a commercial port in Belgium.
 The scale of the map is 1:50 000 and the contour interval is 2.5 metres. The map is dated 2002
 and the satellite photograph is dated 2005.

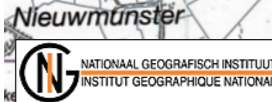


[Source: Satellite image of Zeebrugge, Institut Géographique National – Bruxelles – www.ign.be]

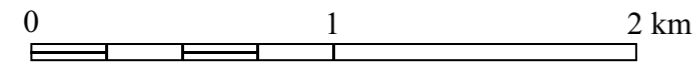
Key/Legend for map:

	Motorway		Parking place : with/without filling station
Main roads	Secondary roads	Linking roads	Other roads
			Dual carriageways
			Roads with 4 or more lanes
			Roads 7 m wide or more (2 or 3 lanes)
			Roads 3.5 m to 7 m wide
E40 N9	Road number – Exit		
	Under construction		
	Road less than 3.5 m wide		
	Road with rough surface		
	Dirt track – Path		
	Surfaced path		
	Railway : H.S.T. – multi-track		
	Railway : single track		
	Railway : out of use – under construction		
	Sidings – Station – Halt		
	Level crossings – Not electrified		
	Bridges – Tunnel		
	Bridge – Viaduct – Road narrowing – Tunnel		
	Visible pipe – Aerial cableway		
	Power transmission line		
	Trigonometrical point : elevated – ground level		
	Built-up area		
	Factory, warehouse, shed, garage		
	Church – Chapel or shrine – Cross – Castle		
	Windmill – Watermill – Wind-engine		
	Slope, crest – Dike or earth bank		
	Rock – Spoil heap – Dunes		
	Wall – Row of trees		
	Deciduous trees – Conifers – Mixed woodland		
	Orchard, nursery, osier bed – Park, lawn		
	Sand – Heath or moor – Sports complex		
	Saltings – Foreshore – Salt meadows		
	a. Watercourse wider than 50 m		
	b. Watercourse 25 m to 50 m wide		
	c. Watercourse 15 m to 25 m wide		
	d. Watercourse 3 m to 15 m wide		
	e. Brook		
	f. Intermittent watercourse		
	g. Pond		
	h. Swamp, marsh		
	i. Spring, fountain, well, reservoir		
	1. Navigable		
	2. Unnavigable		
	Footbridge – Lock – Culvert – Dam		
	Visible water pipe		
	Tower – Water-tower – Cooling-tower		
	Chimney stack – Conspicuous tree – Pylon (telecommunication)		
	Stone – Kilometre stone		
	Lighthouse – Signal-light – Beacon		
	Cemetery – Ruin – Greenhouse		
	(1) Contour		
	(2) Auxiliary contour		
	(3) Index contour		
	• 11,3 78 Spot height – Height rounded to the metre		
	Beek Brook		
	Font. Fountain		
	Pomp. Pumping station		
	Res. Reservoir		
	Zuiv. Filtration bed		
	Ab. Abbey		
	Alstr. Landing-stage		
	Beg. Beguinage		
	Bw. Fire station		
	Calv. Wayside cross		
	Gh. Town hall		
	Hve Farm		
	Kap. Chapel or shrine		
	Kast. Castle		
	Kl. Nursing home		
	Kler. Convent		
	Mol. Mill		
	Pi. Pole		
	Pol. Integrated police force		
	Sch. School		
	Stgve Quarry		
	Vml. Former		
	Zandgr. Sandpit		

[Copyright No. A2524 granted by the Institut Géographique National – Bruxelles– www.ign.be]



Scale 1:50 000



CONTOUR INTERVAL 2.5 METRES

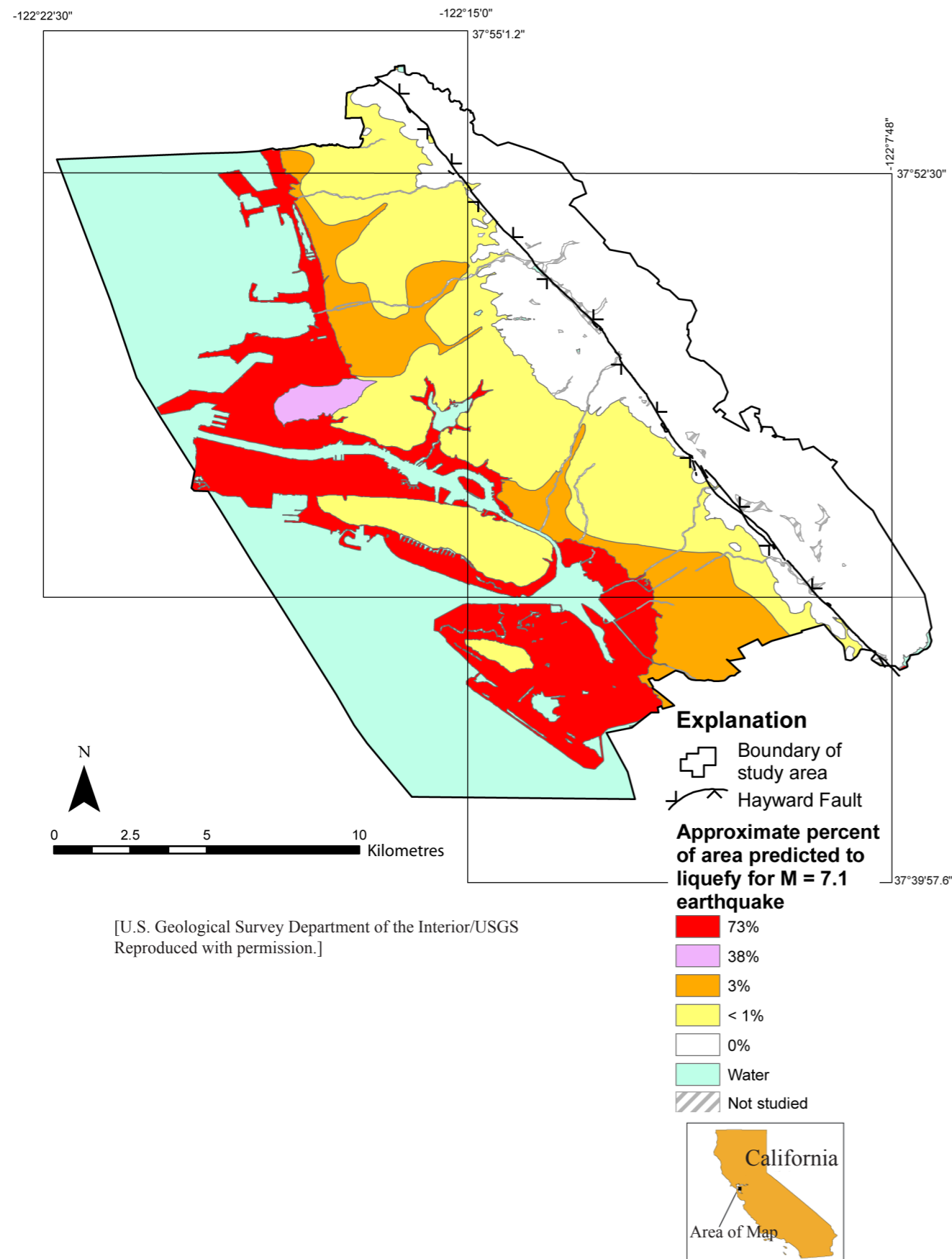
[Source: Institut Géographique National – Bruxelles – www.ign.be]

Turn over

A4. Lithospheric processes and hazards

(b) Structured question

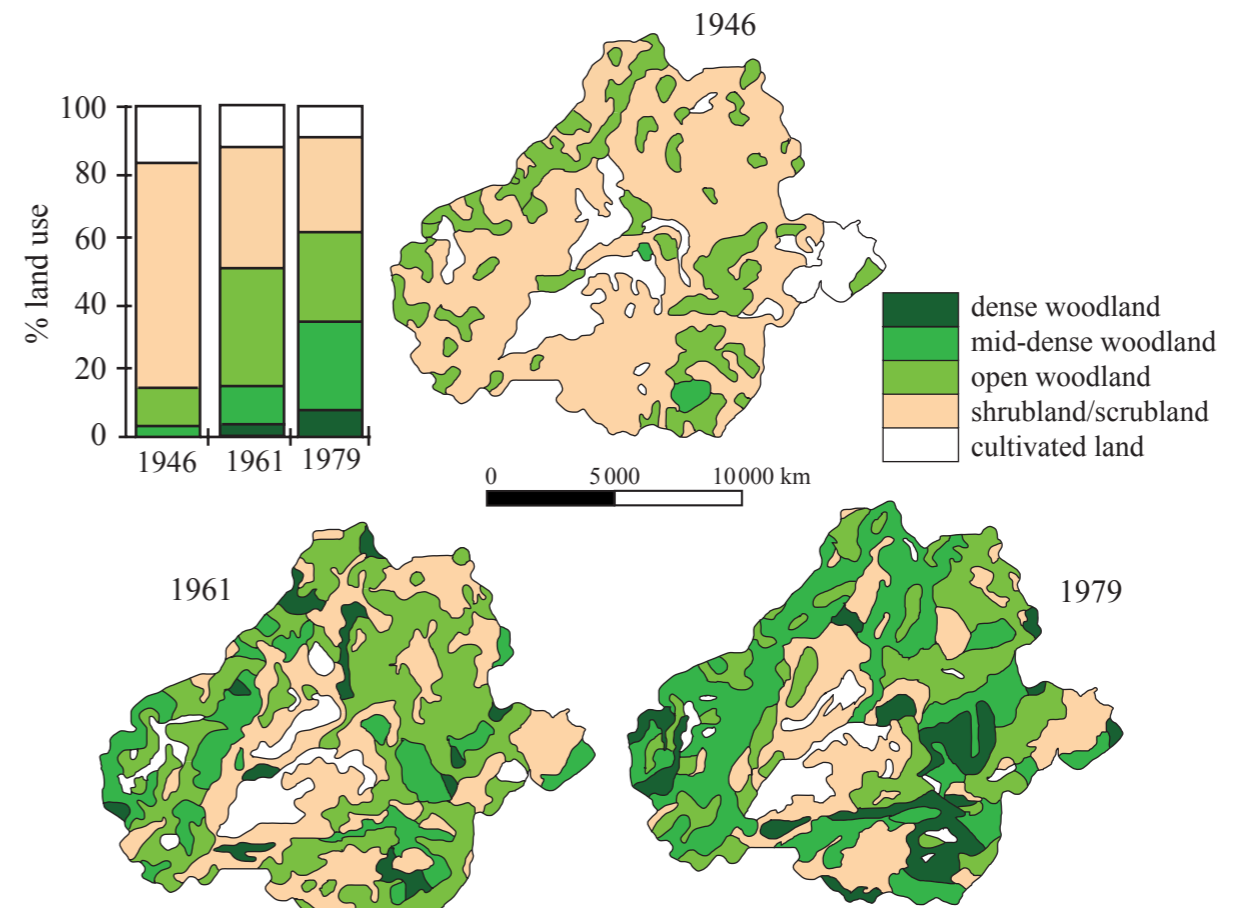
The map shows the liquefaction hazard in the communities of Alameda, Berkeley, Emeryville, Oakland, and Piedmont for a magnitude 7.1 earthquake on the Hayward fault (West Coast of the USA).



A5. Ecosystems and human activity

(b) Structured question

The maps show the changes in vegetation cover which have taken place over a 33 year period in one area in Mediterranean France.



A6. Climatic hazards and change

(b) Structured question

The maps show the pattern of wet acid deposition (the higher the value of sulfate units, the more acidic the deposition) for the eastern USA for three different three-year periods.

