



88095204

**GEOGRAPHY
HIGHER LEVEL AND STANDARD LEVEL
PAPER 2 – RESOURCES BOOKLET**

Friday 13 November 2009 (morning)

INSTRUCTIONS TO CANDIDATES

- Do not open this resources booklet until instructed to do so.
- Use the resources as appropriate to the questions in paper 2.

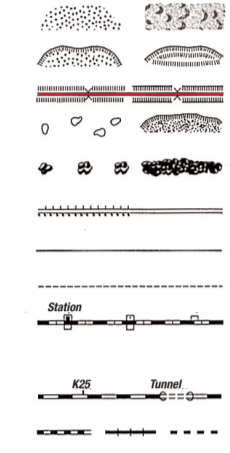

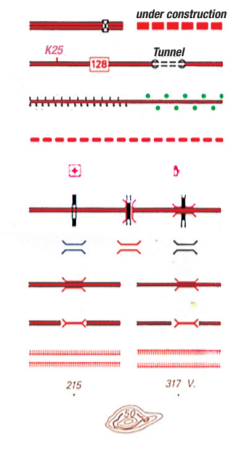

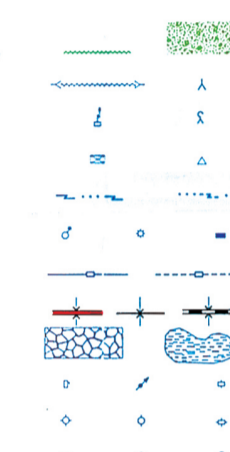
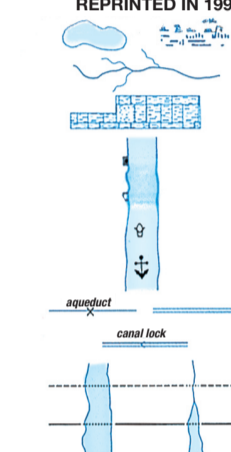


88095204

C11. Topographic mapping

The aerial photograph and map show part of Ponte de Lima, a town in Northern Portugal.

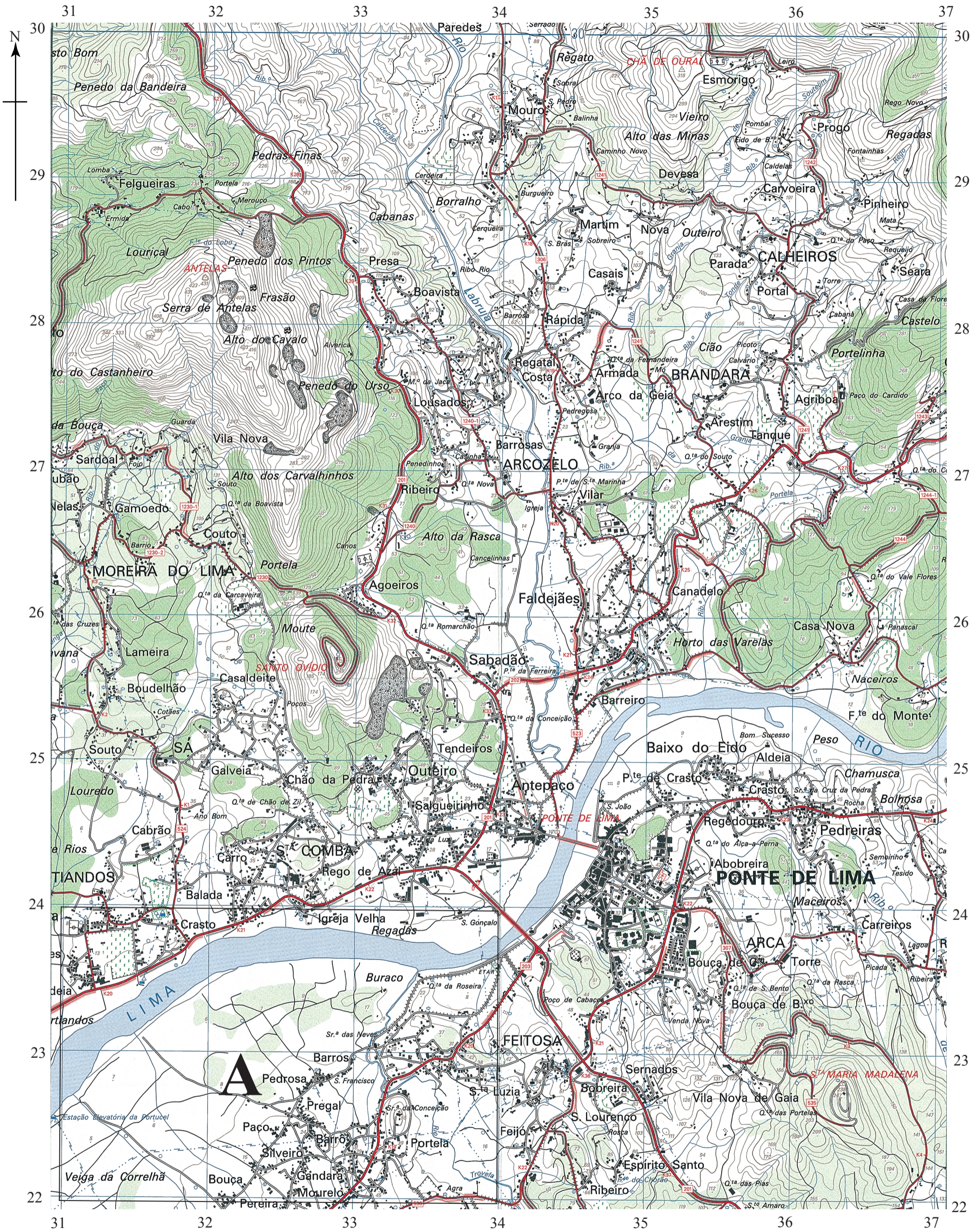
KEY/LEGEND FOR MAP

<p>Beach. Dunes</p> <p>Sand. Escarpment</p> <p>Landfill. Excavation</p> <p>Stony land. Stones</p> <p>Rocky land. Rocks</p> <p>Roads { Access to automobiles Carts Pedestrians</p> <p>Train tracks { Wide { Pair/Double Single Narrow; reduced; under construction</p>	 <p>Houses. Ruins. Customs. Isolated tower</p> <p>Castle or fort. Cemetery. Statue</p> <p>Factory chimney. Pigeon house. Observation point. Silo</p> <p>Fuel depot. Baking ovens (lime; tile)</p> <p>Treatment plant. Lighthouse. Bull ring</p> <p>Main Church. Church. Chapel. Cross</p> <p>Border { Country District. Council</p> <p>Station</p> <p>Mine: entrance to mine; well. Cave</p> <p>Masonry Mill; in ruins</p> <p>Brick wall. Dry stone wall</p> <p>Fuel line</p>	 <p>Motorway</p> <p>Roads { Lane wider than 5.5 m Lane narrower than 5.5 m Under construction</p> <p>Hospital. Garage</p> <p>Crossing: ground; subway; overpass</p> <p>Bridges { Iron; stone or concrete; wood Width of the road Narrower than the road</p> <p>Supporting wall: landfill; excavation</p> <p>Topographic measurements</p> <p>Land contour</p>	 <p>under construction</p> <p>K25 Tunnel</p> <p>215 317 V.</p>
<p>Border landmark</p> <p>Clay (soils). Terraces</p> <p>Geodesic Vertices { .1st order others; auxiliary</p> <p>Construction or building serving as geodesic points or auxiliary { Church. Chapel. Cross. Isolated tower Water tank. Statue. Silo Lighthouse. Radio transmitter. Antennae House. Castle. Chimney. Mill</p> <p>Trees: sparse; dense</p> <p>Woods. Bushes or dense trees</p> <p>Orchard; Vineyard</p>	 <p>172 160</p> <p>AIRE</p> <p>VIGIA OLARIA</p> <p>Fence or wall. Garden or orchard</p> <p>Radio transmitter: series; isolated</p> <p>TSF station. Radar</p> <p>Electric substation. Transformer</p> <p>High voltage cables: aerial; underground</p> <p>Wind turbine. Watermill. Lift station</p> <p>Aqueduct: elevated; underground</p> <p>Aqueduct communication lines</p> <p>Rice field. Terrain covered; uncovered</p> <p>Fountain. Pond. Tank</p> <p>Water tank: elevated; at ground level. Cistern</p> <p>Well. Automated. Artesian well</p>	 <p>Lagoon. Pond. Mire</p> <p>Waterway</p> <p>Marsh</p> <p>River { Important river River Ferry Navigation point</p> <p>Ditch { Narrow; long Navigable</p> <p>Ford { Pedestrian Carts Cars</p>	<p>REPRODUCTION PROHIBITED IN WHOLE OR IN PART REPRINTED IN 1999</p>  <p>aqueeduct</p> <p>canal lock</p>

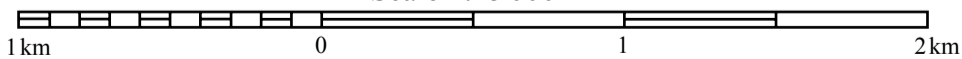
SCALE FOR MAP 1:25 000



[Source: <http://www.cm-pontedelima.pt/pagina/pag/pl/fotos/big/aereas/aerea02.html>]



Scale 1:25 000

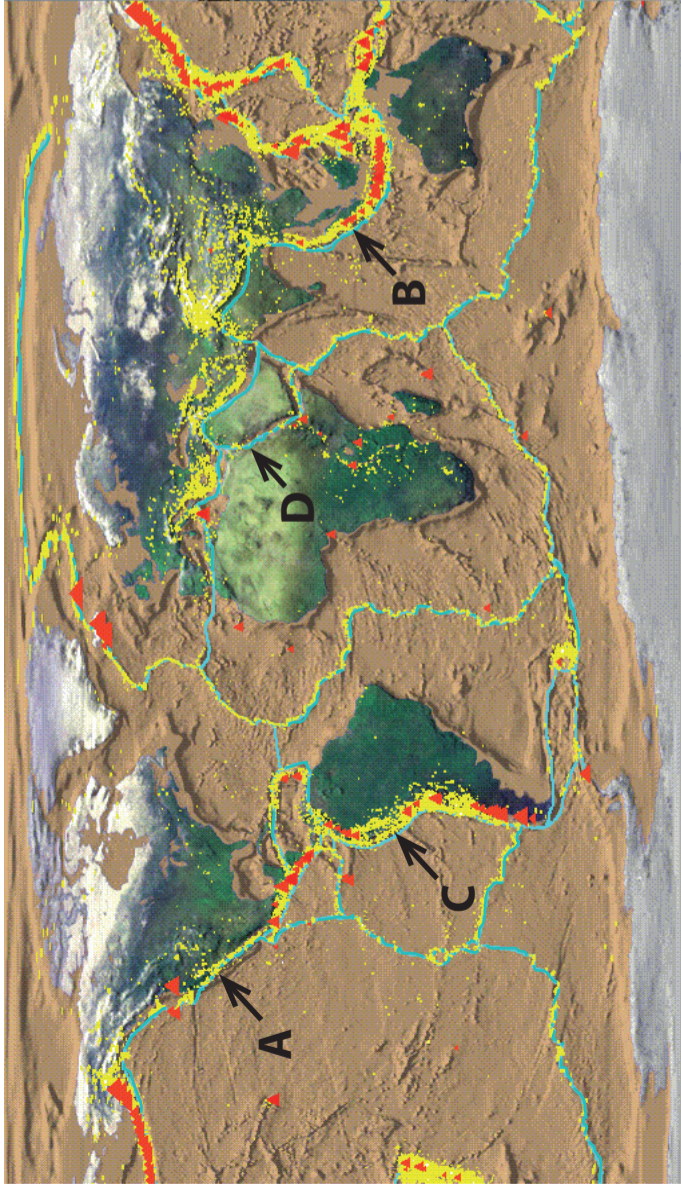


CONTOUR INTERVAL 10 METRES

[Source: extracto da carta militar 1:25 000 n° do Instituto Geográfico do Exército]

A4. Lithospheric processes and hazards

(b) The map shows the world distribution of plate boundaries (blue lines), recent earthquakes (yellow dots) and active volcanoes (red triangles).



[Source: http://www.geology.sdsu.edu/how_volcanoes_work]

B8. Settlements

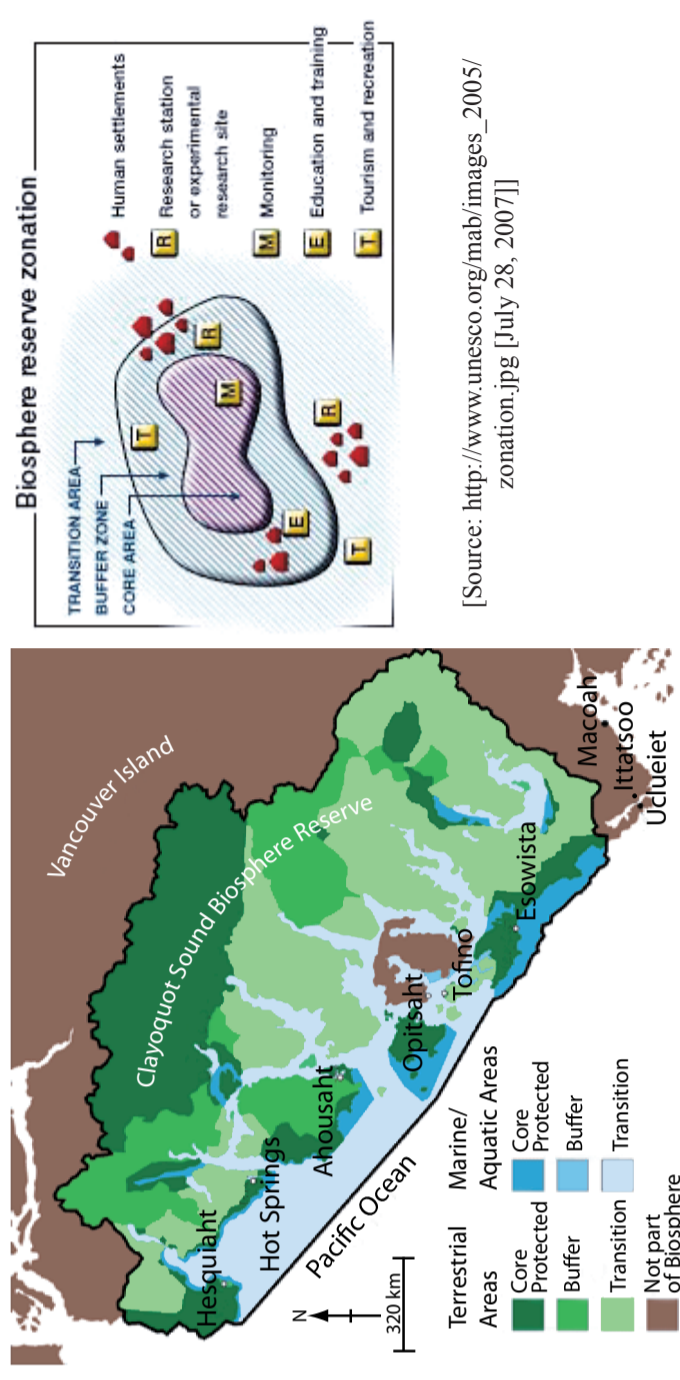
(b) The photograph shows part of Caracas, capital of Venezuela.



[Source: Alfredo Brillembourg and Hubert Klumpner, U-TT/2006. Barrio Petare / Autopista Francisco Farvado / La Urbina Caracas, Venezuela]

B7. Contemporary issues in geographical regions

(b) The map shows Clayoquot Sound Biosphere Reserve in British Columbia, Canada. The diagram shows a model of typical biosphere reserve zonation.



[Source: http://www.unesco.org/mab/images_2005/zonation.jpg [July 28, 2007]]

[Source: <http://www.clayoquotbiosphere.org/img/csubrmap.gif> from the page <http://www.clayoquotbiosphere.org/biosphere/map.php> [July 28, 2007]]

B9. Productive activities: aspects of change

(b) The diagrams show Von Thünen's model of agricultural location.

