

**GEOGRAPHY
HIGHER LEVEL AND STANDARD LEVEL
PAPER 2 – RESOURCES BOOKLET**

Monday 7 November 2005 (morning)

INSTRUCTIONS TO CANDIDATES

- Do not open this resources booklet until instructed to do so.
- Use the resources as appropriate to the questions in paper 2.

C11. Topographic mapping

The map extract opposite shows an area of Mayotte, an island in the Mozambique Channel in the Indian Ocean. Mayotte has a tropical, humid climate with monsoon rains from November to May. The map extract has a scale of 1:50 000. The aerial photograph below shows part of Petite-Terre; an island off Mayotte.



A1. Drainage basins and their management

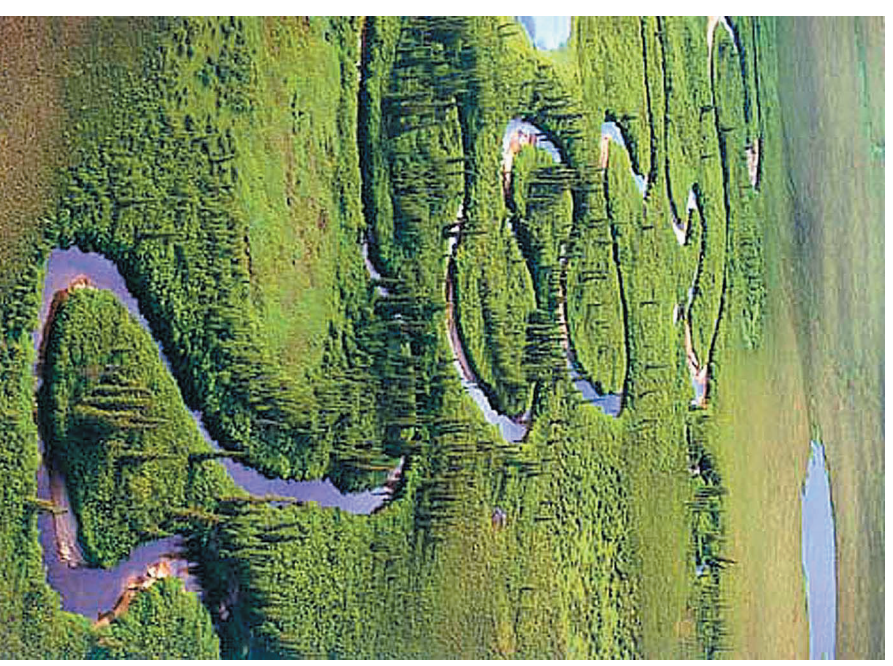
(b) Structured question

The two photographs below illustrate river processes, which are typical in areas of fluvial deposition.

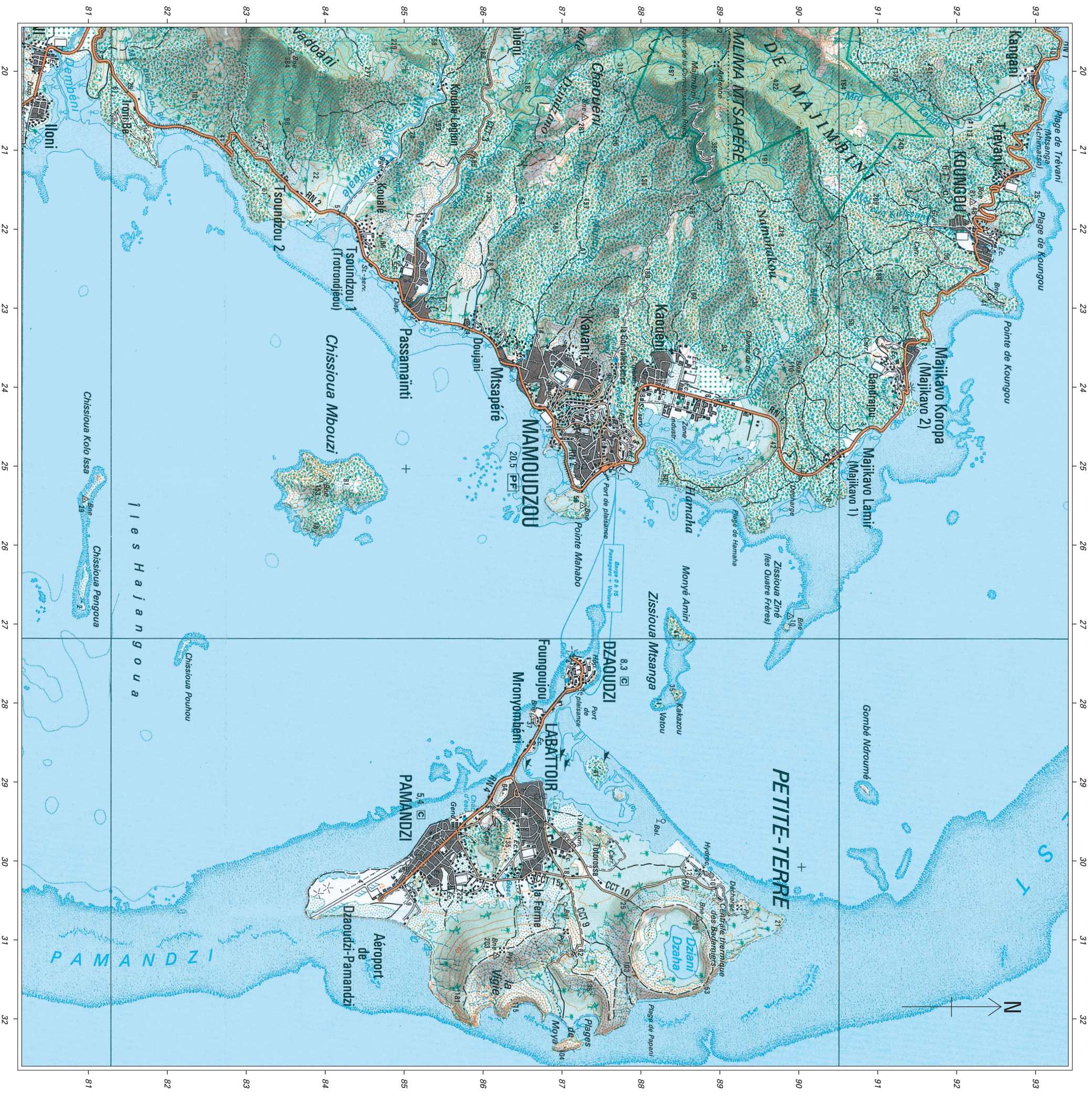
Photograph A



Photograph B



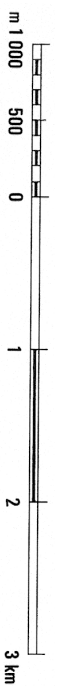
[© Yann Arthus-Bertrand – Argentina, Leona River]



MAP LEGEND

Paved, classified principal road		Waterfall - Dam	
Paved/unpaved classified secondary road		Permanent water - Floodable land	
Regularly maintained road - Irregularly maintained road		Elevated tank - Reservoir, rainwater tank - Wash house - Pumping station	
Seasonal track - Trail		Pontoon - Pier/jetty - Lighthouse - Light	
Street, urban alley - Road closed		Buoy - Light buoy - wreck	
Road designation: national highway - local road		1. Low-water line	
Administrative centre		2. High-water line - 3. Rocks	
Approximate town boundary		Foreshore: 4. Dump sand, silt - 5. Coral, submerged rocks - 6. Coral reef	
Population in thousands of inhabitants (1991 census)		Contour lines, 20 m intervals - Depression	
Built-up area: urban core		Basin - Earth/rock bank - Pile of pebbles	
1. Houses - 2. Building of interest		Bare and gullied ground	
Slash triangulation point		Vegetation limit	
Friday mosque - Mosque - Church		Forest reserve limit	
Muslim/Christian cemetery		Coconut tree - Banana tree - Ylang ylang - Mangrove - Bamboo	
Wall, boundary - Fence		Dense forest	
Permanent watercourse - Temporary watercourse		Degraded forest	
Bridge - Footbridge - Ford		Spars forest, scrub	
		Plantation	
		Market gardening	

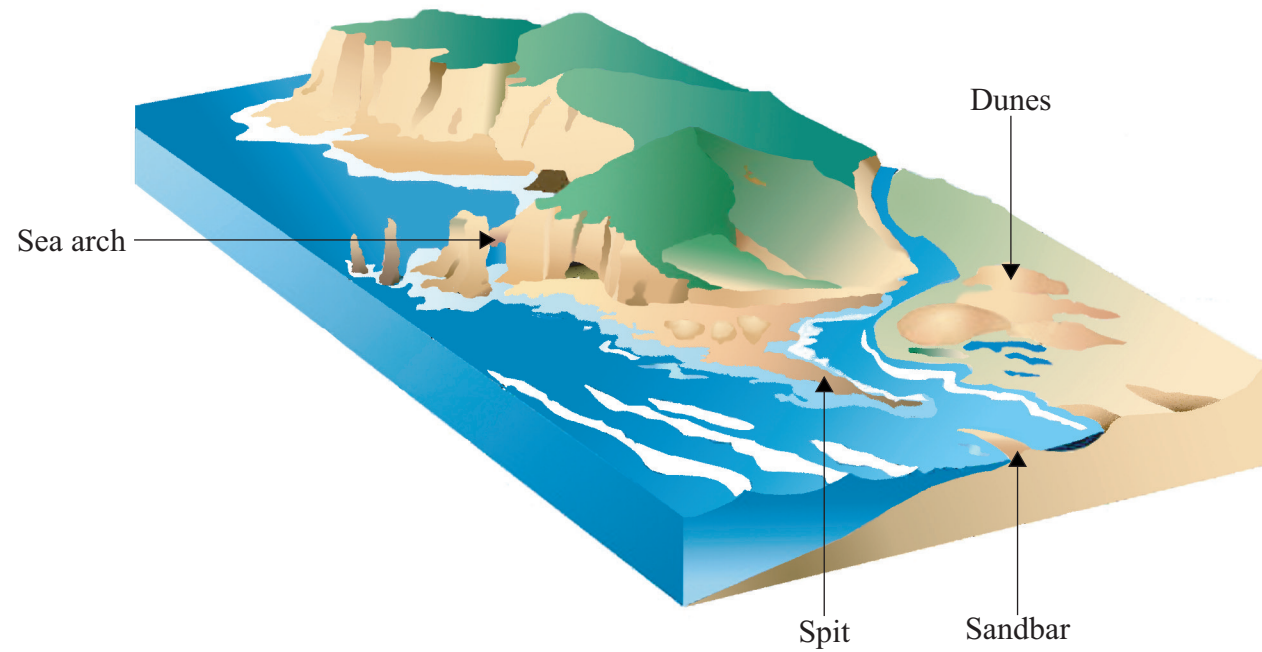
SCALE 1:50 000



A2. Coasts and their management

(b) Structured question

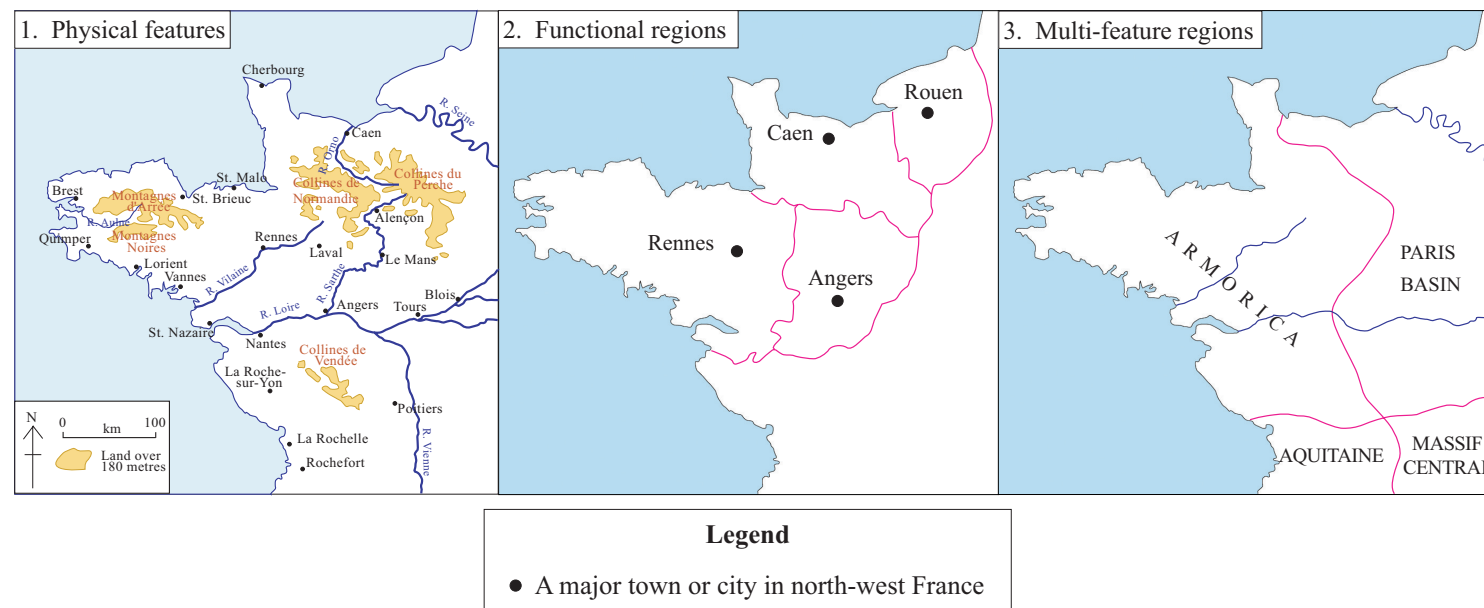
The diagram below shows some coastal features.



B7. Contemporary issues in geographical regions

(b) Structured question

Map 1 shows some basic geographical features of north-west France. Maps 2 and 3 show alternative regional divisions of the same area.

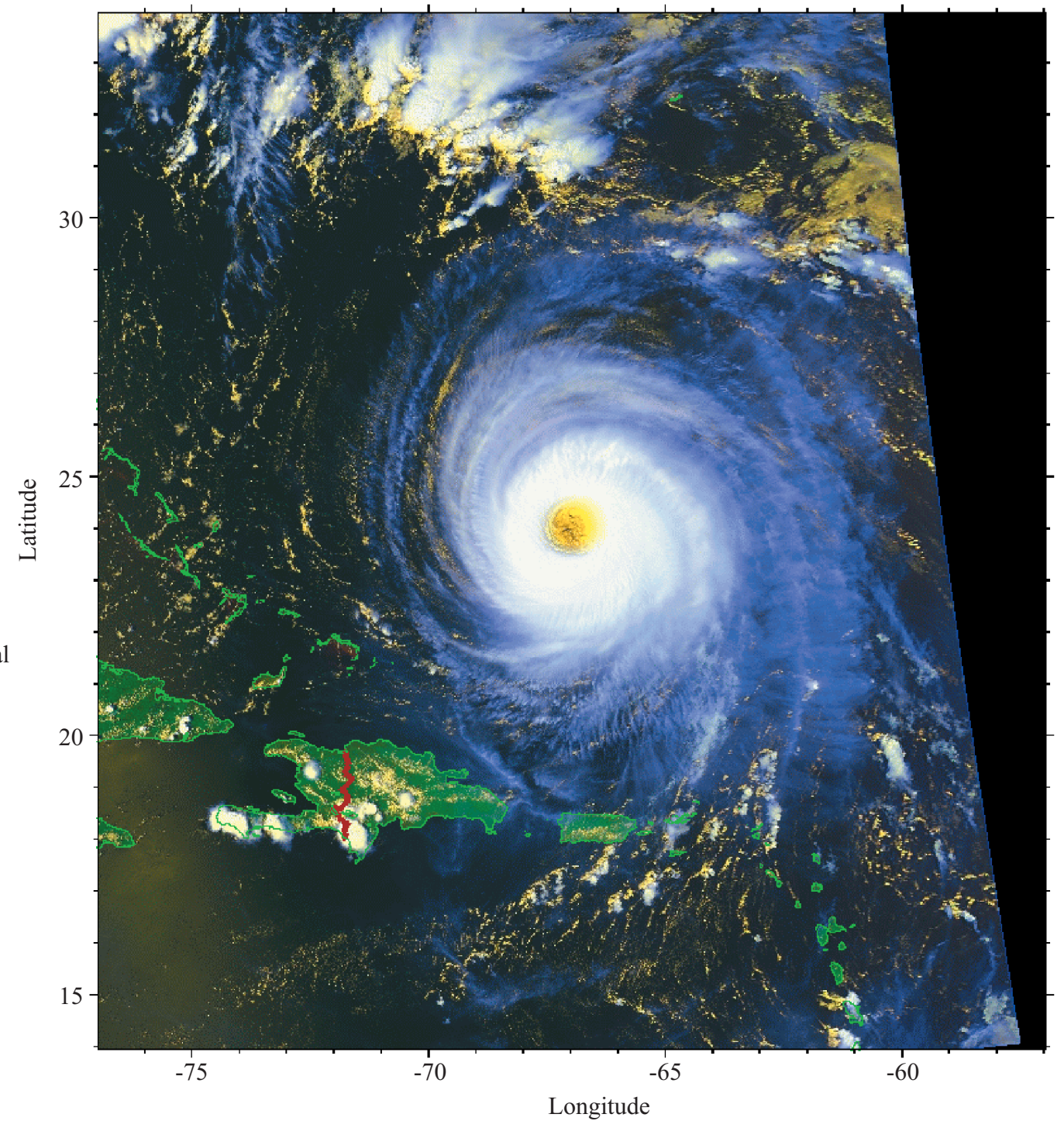


[Source: Map 1 – Harry Robinson (1968) *Western Europe*; Maps 2 and 3 – Oswald Hill (1964) *The Frontiers of Geography*. All redrawn with modifications.]

A6. Climatic hazards and change

(b) Structured question

The diagram below is a satellite image of hurricane Isabel.



[Source: Ray Sterner / Applied Physics Laboratory / The Johns Hopkins University, licensed by North Star Science and Technology, LLC]