



IB DIPLOMA PROGRAMME  
PROGRAMME DU DIPLÔME DU BI  
PROGRAMA DEL DIPLOMA DEL BI

M07/3/GEOGR/BP2/ENG/TZ0/XX/RE



22075204

**GEOGRAPHY**  
**HIGHER LEVEL AND STANDARD LEVEL**  
**PAPER 2 – RESOURCES BOOKLET**

Wednesday 9 May 2007 (morning)

---

**INSTRUCTIONS TO CANDIDATES**

- Do not open this resources booklet until instructed to do so.
- Use the resources as appropriate to the questions in paper 2.

**C11. Topographic mapping**

The map extract below and the oblique aerial photograph opposite show part of the city of Sydney, the largest city in Australia with a population of four million.

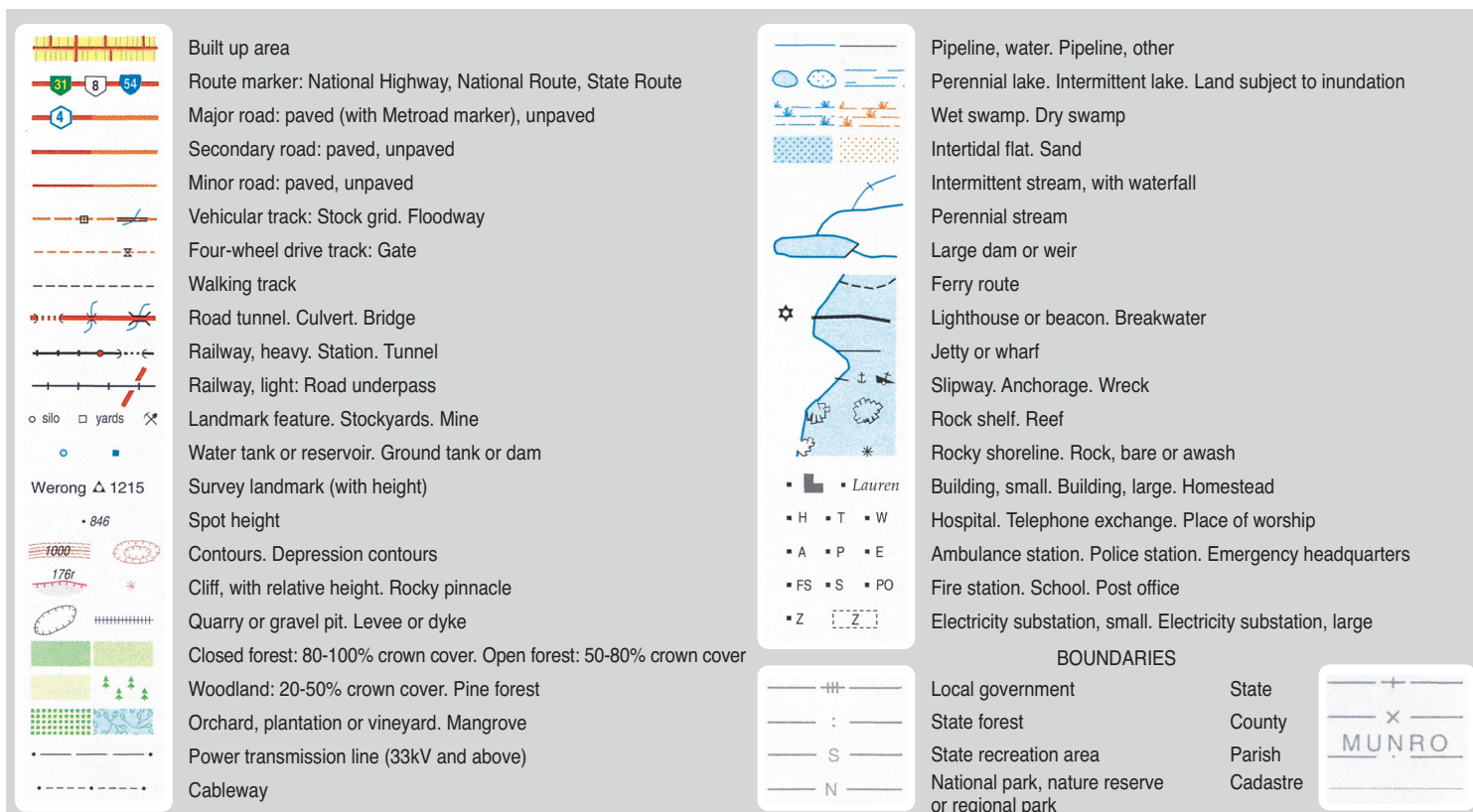
Sydney is the main financial, transport, trade and cultural centre of Australia. It is located on the Parramatta River, which provides the largest natural harbour in the world.



The copyright holders have insisted that the electronic publication of this map for sales purposes is restricted to 100 dpi.

[Source: © Department of Lands, Panorama Avenue, Bathurst 2795] [www.lands.nsw.gov.au](http://www.lands.nsw.gov.au)

**LEGEND FOR MAP**



SCALE FOR MAP 1:25 000

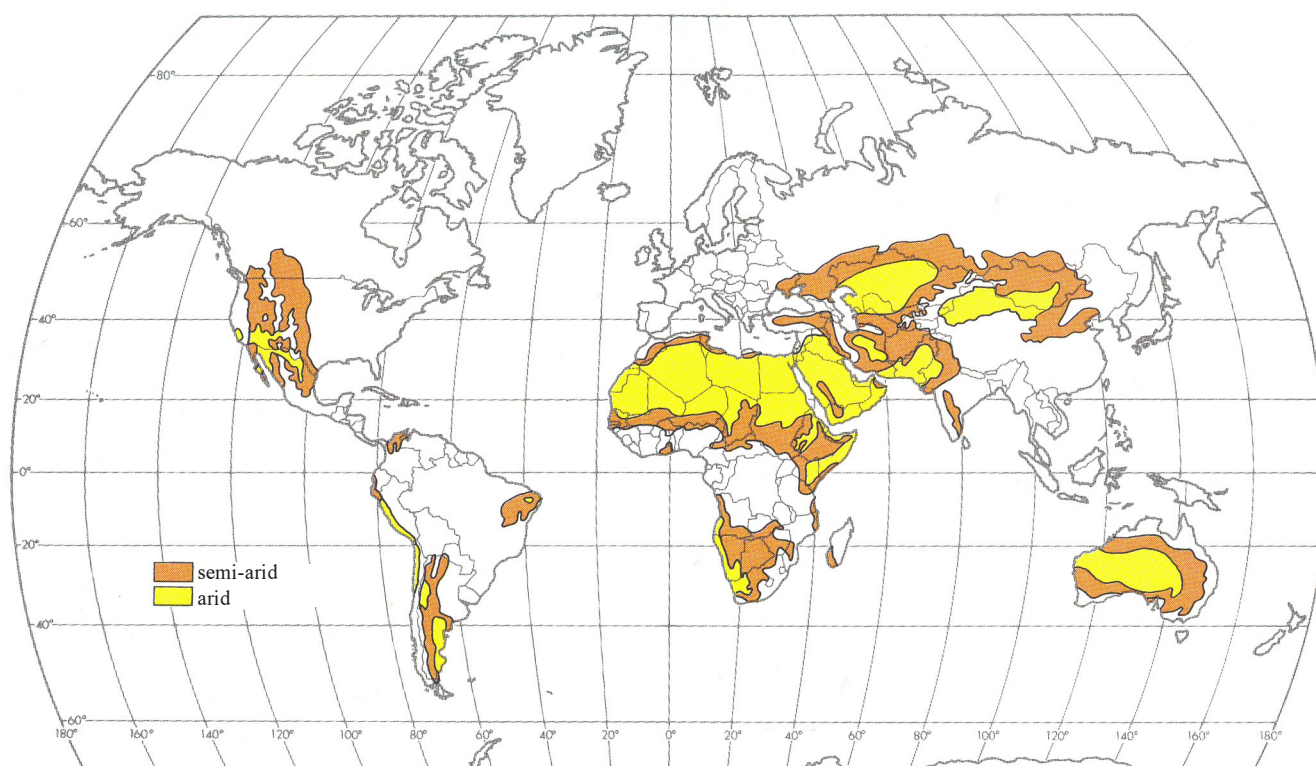
CONTOUR INTERVAL 10 METRES



[Source: © Department of Lands, Panorama Avenue, Bathurst 2795]

**A3. Arid environments and their management**

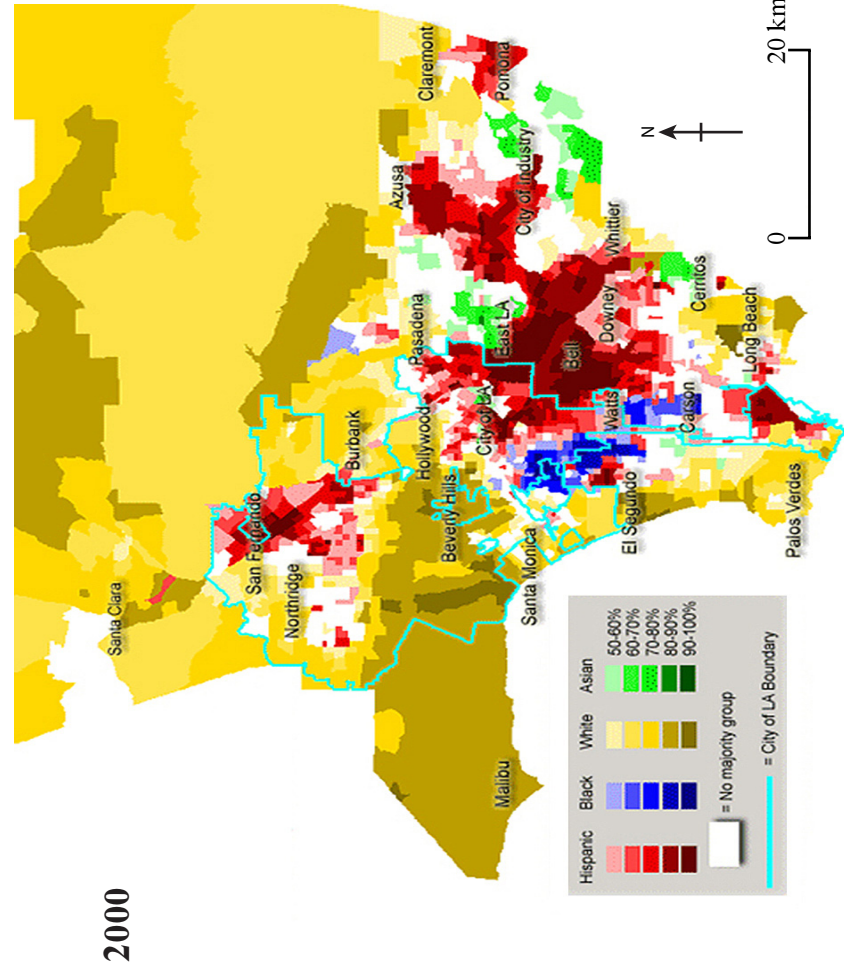
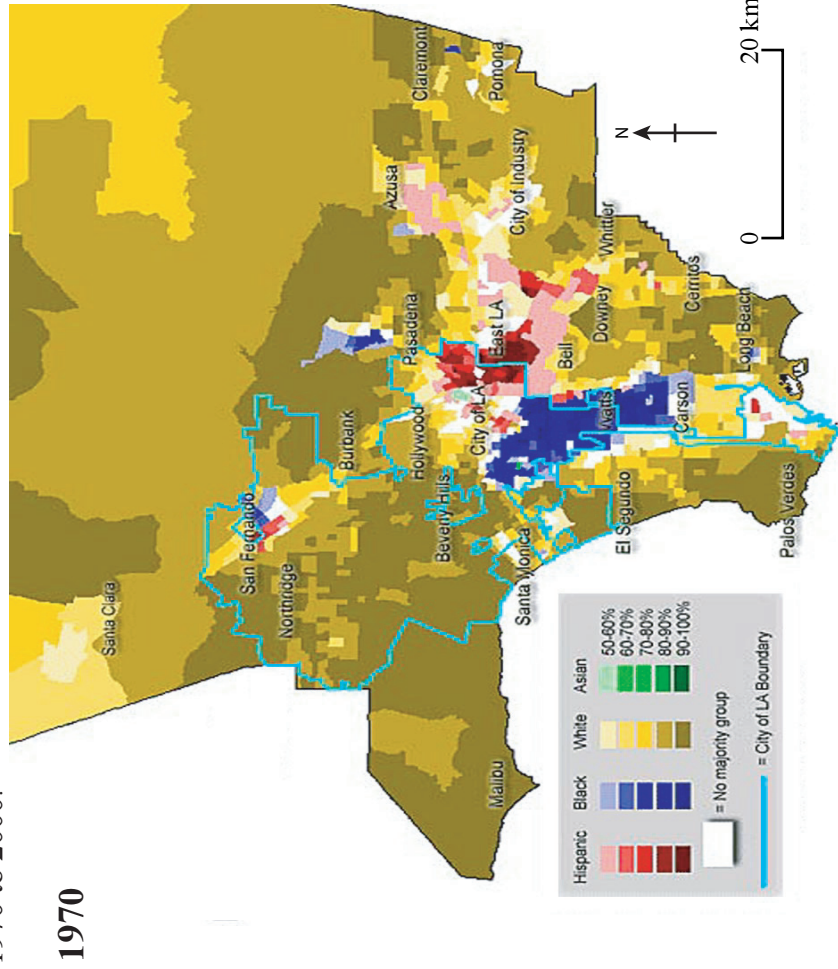
**(b)** The map shows the locations of the world's major arid and semi-arid environments.



[Source: *Introduction to Geography*, Getis, Getis and Fellmann (1998), McGraw-Hill]

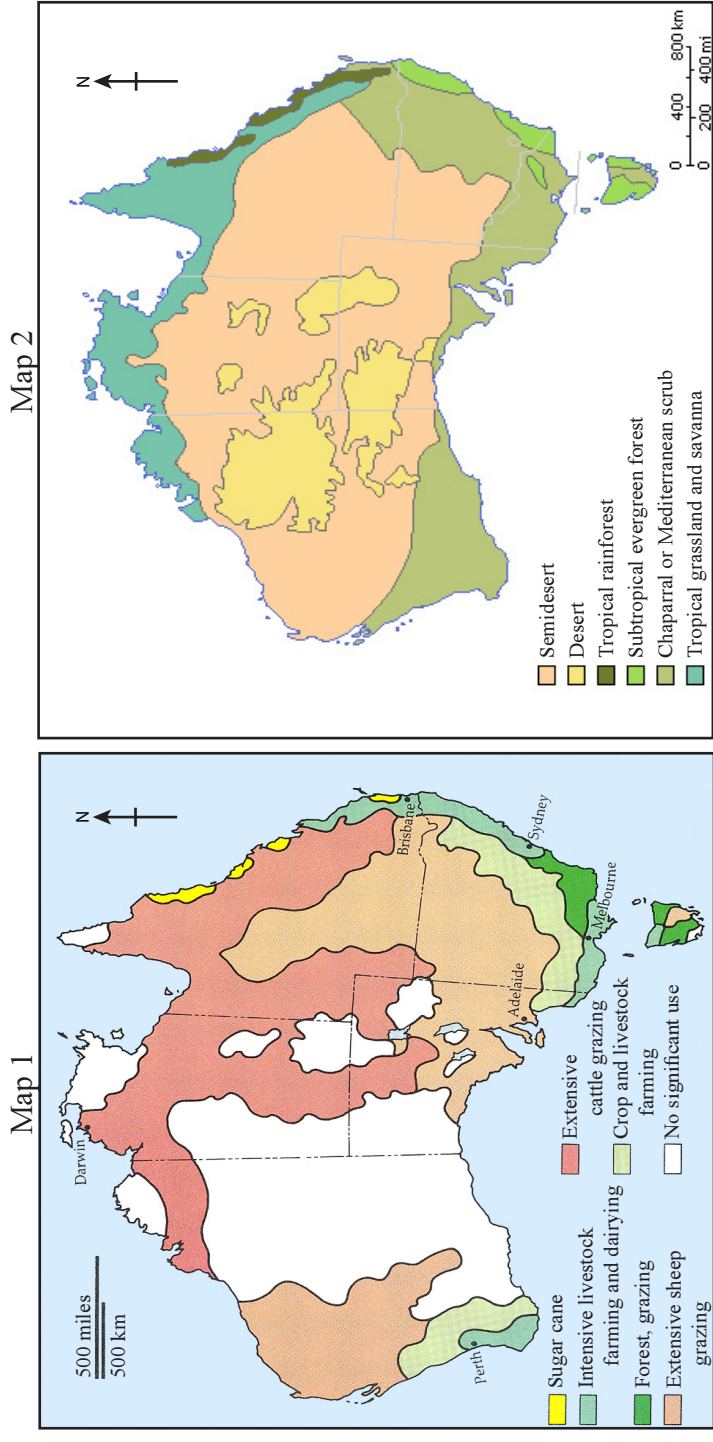
**B8. Settlements**

(b) The maps show the ethnic composition in Los Angeles County, USA from 1970 to 2000.



**B7. Contemporary issues in geographical regions**

(b) Map 1 shows Australia's agricultural regions and Map 2 shows its natural vegetation regions.



**B10. Globalization**

(b) The map shows the current worldwide distribution of McDonald's restaurants.

