



IB DIPLOMA PROGRAMME
PROGRAMME DU DIPLOME DU BI
PROGRAMA DEL DIPLOMA DEL BI

M03/320/RESOURCES

GEOGRAPHY
HIGHER LEVEL AND STANDARD LEVEL
PAPER 2 – RESOURCES BOOKLET

Friday 16 May 2003 (morning)

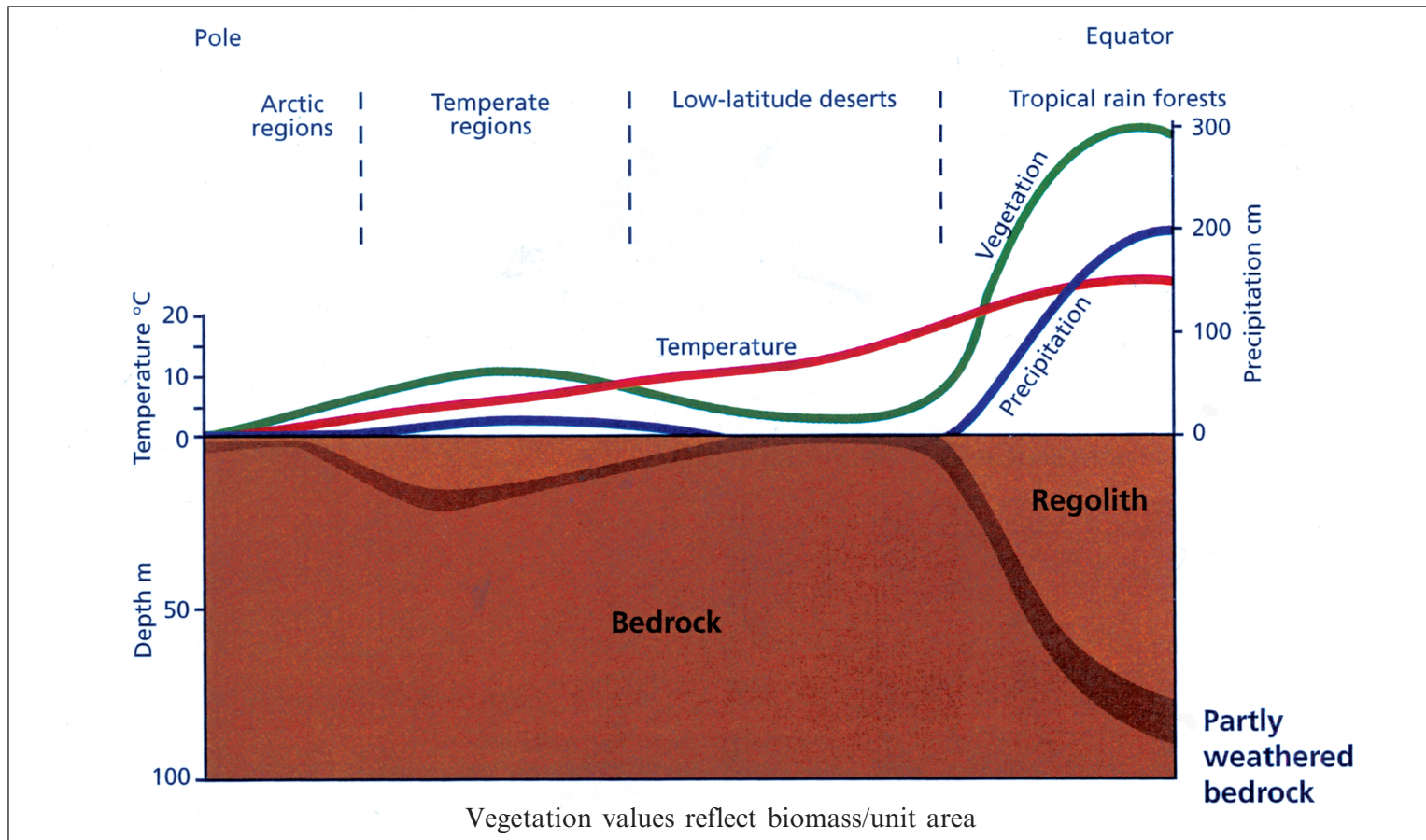
INSTRUCTIONS TO CANDIDATES

- Do not open this resources booklet until instructed to do so.
- Use the resources as appropriate to the questions in paper 2.

A4. Lithospheric processes and hazards

(b) Structured question

The diagram shows the depth of regolith at different latitudes and some of the factors influencing it.



[Source: I Cook et al., *Geography in Focus* (2000)]

C11. Topographic mapping

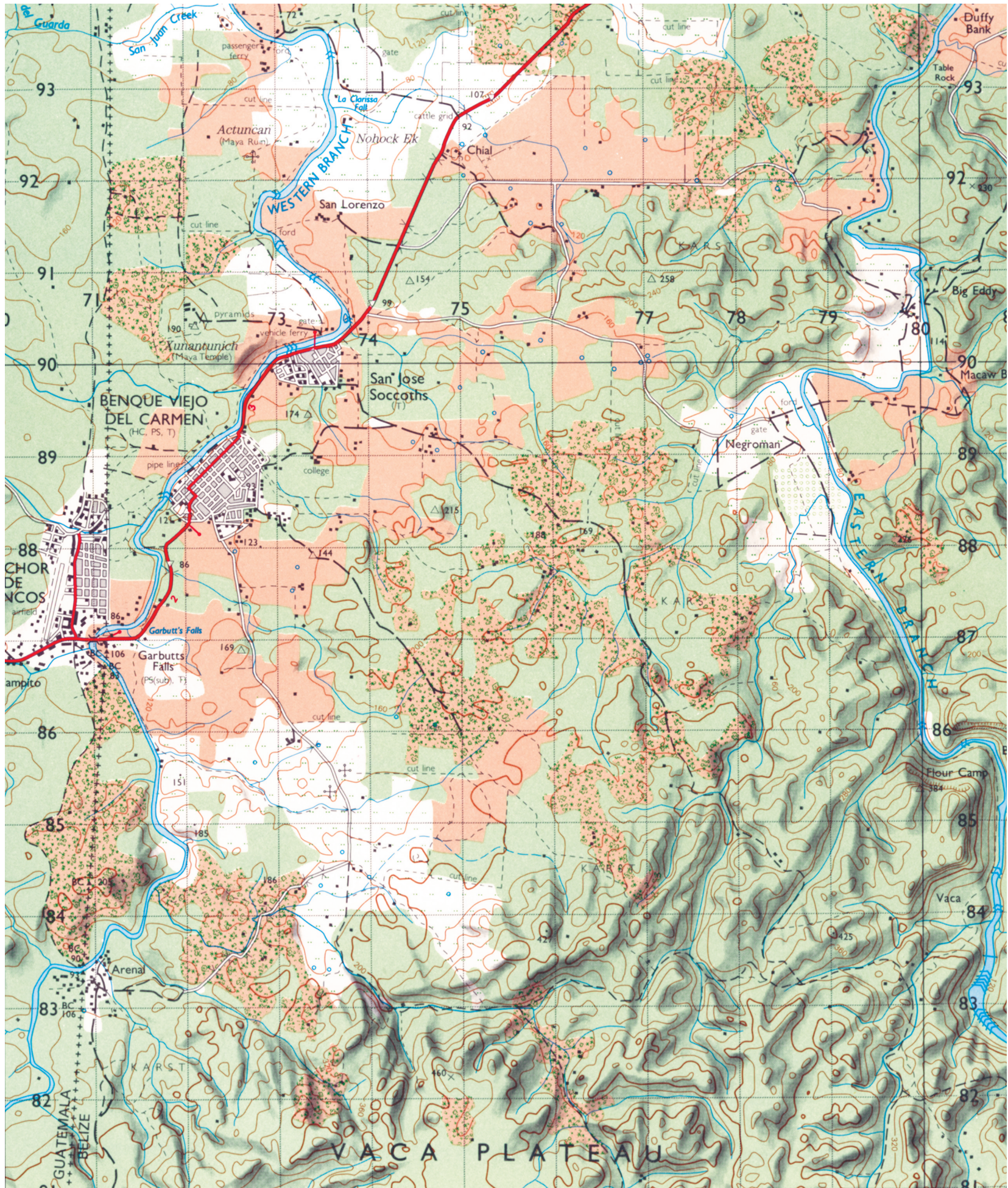
The map and photograph extracts show part of Belize.



© Crown Copyright/MOD

LEGEND

CULTURE	MISCELLANEOUS
Built-up area	International boundary
Village	District boundary
Buildings. Landmark building	Boundary cairn. Boundary pillar
Main route-sealed	Bridge. Culvert. Ford
Main route-unsealed, with distance in kms between markers	Causeway. Bridge liable to flood
Secondary route-sealed	Ruin. Tank
Secondary route-unsealed	Obstruction. Lighthouse
Other route. Track	Cut line
Route under construction	Fence line
Trail. Footpath	Landmark area
	Danger area
	Nature reserve
DRAINAGE	RELIEF
Shoreline: definite, indefinite, man made	Contour-index
Watercourse with flow arrow	Contour-intermediate
Indefinite watercourse	Depression
Falls. Rapids. Dammed stream	Trig: major, minor
Ditch, canal, drain	Spot height. Estimated elevation
Lake. Reservoir. Dam	Cliff (over 100m)
Land subject to inundation	Cliff or escarpment (less than 100m)
Areas of numerous hollows and swamps	Quarry or mine
Water tank. Well/ Waterhole. Spring	Levee. Cave. Sink hole
Reef. Rock. Rock awash	Sand, mud, gravel
Foreshore flats	
Filter beds etc.	
VEGETATION	
High jungle	
Medium jungle	
Pine woods	
Scrub	
Plantation	
Pastureland	
Croplands: regular, temporal	
Mangrove	
Tidal grass swamp	
Swamp: grass, tree/bush	



© Commissioner of Lands and Surveys, Belize

SCALE 1:50,000



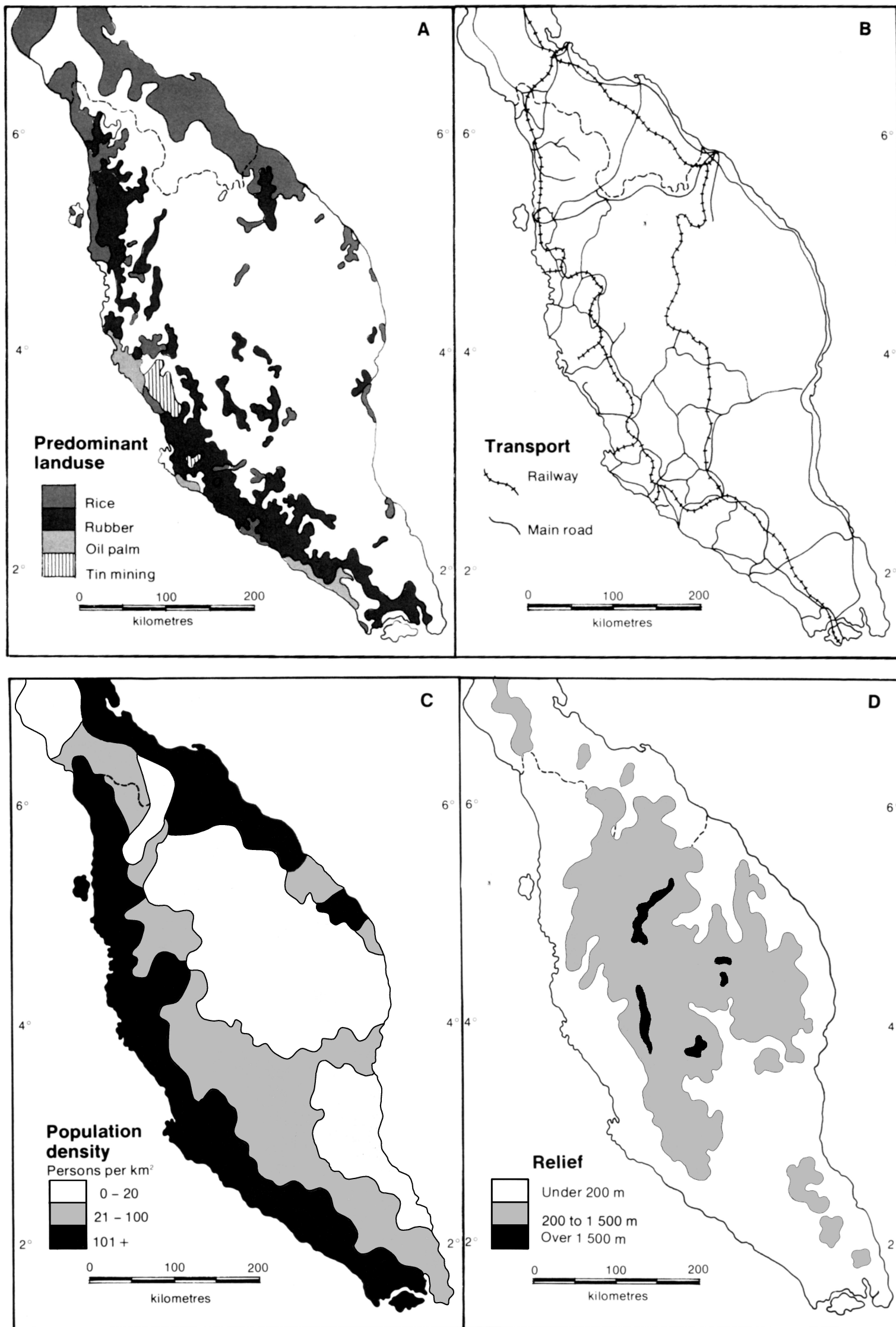
CONTOUR INTERVAL 40 METRES

ELEVATIONS IN METRES

B7. Contemporary issues in geographic regions

(b) Structured question

The four maps show aspects of the Malay Peninsula in western Malaysia.



[Source: J C R Camm and P G Irwin, (1982), *Land, Man, Region: Regional systems of interacting systems*, Melbourne: Longman-Cheshire, pages 120-121]