

## TECHNOLOGY AND LIVING (FASHION, CLOTHING AND TEXTILES)

### PAPER 1

#### (Sample Paper)

Time allowed: 1½ hours

This paper must be answered in English

1. This paper consists of THREE sections, A, B and C. Section A carries 15 marks. Section B carries 25 marks. Section C carries 30 marks.
2. Attempt ALL questions. Write your answers in the answer book provided.
3. Answers should be presented in an orderly way.
4. Tables and diagrams should be included wherever appropriate.
5. Graph paper and supplementary answer sheets will be supplied on request. Write your candidate number on each sheet, and fasten them with a string inside the answer book.

**SECTION A – Multiple Choice Questions**

*This section carries 15 marks. Answer ALL questions in this section.*

1. Which of the following seams adds strength to the joining part and stops fraying ?
  - A. plain seam
  - B. cup seam
  - C. lap seam
  - D. french seam
  
2. Calendering is a mechanical finishing process which used to
  - (1) smooth the surface.
  - (2) provide various surface effects.
  - (3) lift the fibres from the fabric to form a soft fibrous surface.
  - A. (1) and (2) only
  - B. (1) and (3) only
  - C. (2) and (3) only
  - D. (1), (2) and (3)
  
3. Which of the following are design elements
  - (1) line and direction
  - (2) contrast and harmony
  - (3) shape and size
  - A. (1) and (2) only
  - B. (1) and (3) only
  - C. (2) and (3) only
  - D. (1), (2) and (3)
  
4. Cool colours are colours that associated with
  - (1) peace
  - (2) passion
  - (3) sky
  - A. (1) and (2) only
  - B. (1) and (3) only
  - C. (2) and (3) only
  - D. (1), (2) and (3)
  
5. Which of the following pairs of colours is an example of complementary colours?
  - A. blue-violet
  - B. yellow-violet
  - C. red-orange
  - D. blue-green

6. Which of the following are the advantages of working on a dress stand before you begin designing?
- (1) It helps generate ideas three-dimensionally.
  - (2) It allows visualizing the drape of different fabrics.
  - (3) It permits pinning and creating drapes from different angles.
- A. (1) and (2) only
  - B. (1) and (3) only
  - C. (2) and (3) only
  - D. (1), (2) and (3)

7. Study the following drawing.



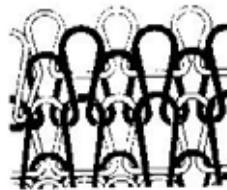
What type of drawing does this belong to?

- A. fashion illustration
  - B. production sketch
  - C. rough sketch
  - D. design sheet
8. Which of the following fabrics is suitable for making evening gown?
- A. satin
  - B. flannel
  - C. gabardine
  - D. silk tweed

9. Which principle of design is demonstrated by the top shown in following picture?



- A. proportion
  - B. repetition
  - C. rhythm
  - D. graduation
10. Study the diagram shown below.



- What type of knit is demonstrated in the diagram?
- A. single jersey
  - B. jacquard
  - C. interlock
  - D. warp knitting
11. Which of the following fibres is a synthetic fibre?
- A. polyester
  - B. viscose rayon
  - C. flax
  - D. wool
12. Which of the following correctly shows the percentage of water regain of the fibres in ascending order?
- A. nylon, cotton, silk, acetate rayon
  - B. acetate rayon, nylon, silk, cotton
  - C. nylon, acetate rayon, cotton, silk
  - D. nylon, silk, acetate rayon, cotton

**Directions:** Questions 13 and 14 refer to the following table which shows the burning tests results for four fibre samples.

Fibre sample	Burning	Flame	Smell	Ash / Residue
P	Burns easily and quickly	Yellow	Burning paper	Grey ash
Q	Burn easily and quickly	Yellow	Burning paper	Light grey ash
R	Fuses and shrinks away from flame	Black	Vinegar	Melt to a hard shiny black bead
S	Fuses and shrinks away from flame	Luminous red	Slightly sweetish	Hard round brittle black bead

13. Which of the following combinations correctly shows the identity of the fibre samples?

- |    |          |          |           |
|----|----------|----------|-----------|
|    | <u>P</u> | <u>Q</u> | <u>R</u>  |
| A. | cotton   | viscose  | acetate   |
| B. | linen    | cotton   | acetate   |
| C. | viscose  | linen    | polyester |
| D. | cotton   | linen    | polyester |

14. Which of the following correctly describes the chemical property of fibre S?

- A. It can be degraded by acids and alkalis.
- B. It turns yellow when exposed to chlorine bleach.
- C. It can be permanently shaped by heat.
- D. It can be damaged by alkalis but not acids.

15. Which of the following descriptions about dyeing is *incorrect*?

- A. Dye is water soluble.
- B. Pigment diffuses into the fibre.
- C. Dye migrates from the dye liquor to the fibre.
- D. Both dye and pigment can be used for printing.

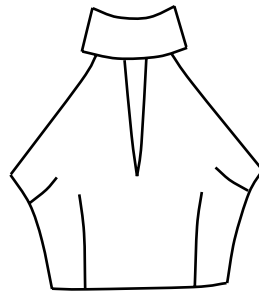
**SECTION B – Design Questions**

*This section carries 25 marks. Answer ALL questions in this section.*

1. You are going to join a uniform design competition organized by the school. You are required to design a winter blazer for multifunctional purposes.
- (a) Sketch a suitable design with annotations on how the design features used can fulfill the requirements. (5 marks)
  - (b) Suggest **TWO** suitable fabrics for the design. Explain your choice. (4 marks)
  - (c) Suggest with reasons, **THREE** physical tests for evaluating the serviceability of the fabric. (6 marks)

**Total: 15 marks**

2. A pop singer is going to hold a concert at the Hong Kong Stadium in July.
- (a) Design and sketch **TWO** different garments for her to wear with the given top when performing the types of songs, one for romantic songs and one for rock and roll songs. Label the design features. (5 marks)



- (b) Draw **TWO** suitable accessories to complete a total look for each outfit. (2 marks)
- (c) Suggest **TWO** different fabrics and are suitable for making the given top in (a). Justify your choice of fabric. (3 marks)

**Total: 10 marks**

**SECTION C – Structured Questions**

*This section carries 30 marks. Answer ALL questions in this section.*

1. Recently, many fathers work across border in China every week. Discuss the implications for each member of the family in this situation.
- the father (3 marks)
  - the mother (3 marks)
  - the child (3 marks)

**Total: 9 marks**

2. (a) Viscose is called ‘artificial silk’. Compare the difference between the properties of the fabrics produced from silk and viscose filaments. (4 marks)
- (b) Suggest a fabric finish to:
- (i) make silk fabric water proof. (1 mark)
  - (ii) reduce creasing and shrinkage of viscose fabric. (1 mark)
- (c) Suggest with a reason, a suitable fabric structure for making the following items.
- (i) silk scarves (2 marks)
  - (ii) a tight-fit one-piece printed dress made from viscose lycra<sup>®</sup>. (2 marks)

**Total: 10 marks**

3. The first stage of the design process involves thorough research.
- (a) Suggest **FOUR** ways that you can get your inspiration from. (4 marks)
  - (b) Explain the use of mood board in fashion designing. (3 marks)
  - (c) The fabrics and colours for a design will depend largely on the season your collection is aimed at.’ Illustrate this statement with suitable examples. (4 marks)

**Total: 11 marks**

**END OF PAPER**