

GEOGRAPHY PAPER 2 (Sample Paper)

Time allowed: 1 hour

This paper must be answered in English.

GENERAL INSTRUCTIONS

1. This paper consists of *two* sections:

Section D – consists of 4 data / skill-based / structured questions. Choose **ONE** question only in this section, which must be on an elective different from that chosen in Section E.

Section E – consists of 4 short essay questions. Choose **ONE** question only in this section, which must be on an elective different from that chosen in Section D.

2. Draw sketch maps and diagrams to supply additional, relevant information when appropriate.

Not to be taken away before the
end of the examination session

Section D: Answer ONE question from this section. The elective question you choose to answer is different from that in Section E. Each question carries 18 marks. (18%)

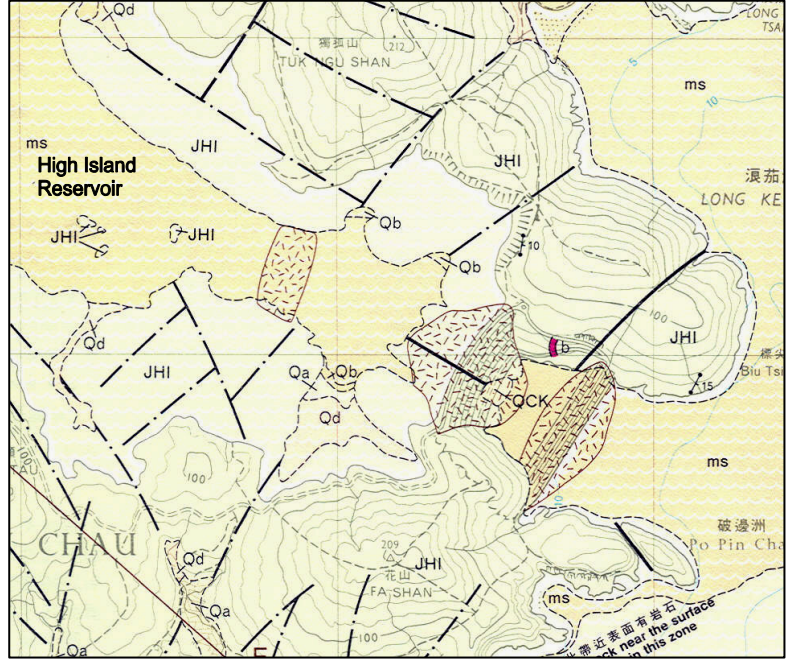
1. Photograph 1a shows a common rock type found in the High Island area in Sai Kung (Hong Kong). Figure 1b is a geological map of the area where the photograph was taken.

Photograph 1a



- (a) (i) Identify the type and age of the rock. (2 marks)
- (ii) Describe the rock structure and relief of the area. (3 marks)
- (iii) Explain how the rock structure helps shape the relief of the area. (4 marks)
- (b) Explain how internal processes have produced the landscape shown in Photograph 1a. (6 marks)
- (c) The High Island Reservoir is situated in this area. Discuss how the building of the reservoir has modified the landscape. (3 marks)

Figure 1b



Legend:

SUPERFICIAL DEPOSITS

Geological Time	Genetic Classification	Symbols							
Quaternary	Fill								
	Other superficial deposits	<table border="1"> <tr> <td>Qb</td> <td>Qa</td> </tr> <tr> <td>Qbb</td> <td>Qd</td> </tr> <tr> <td>QHH</td> <td>Qt</td> </tr> <tr> <td>ms</td> <td>Qdt</td> </tr> </table>	Qb	Qa	Qbb	Qd	QHH	Qt	ms
Qb	Qa								
Qbb	Qd								
QHH	Qt								
ms	Qdt								

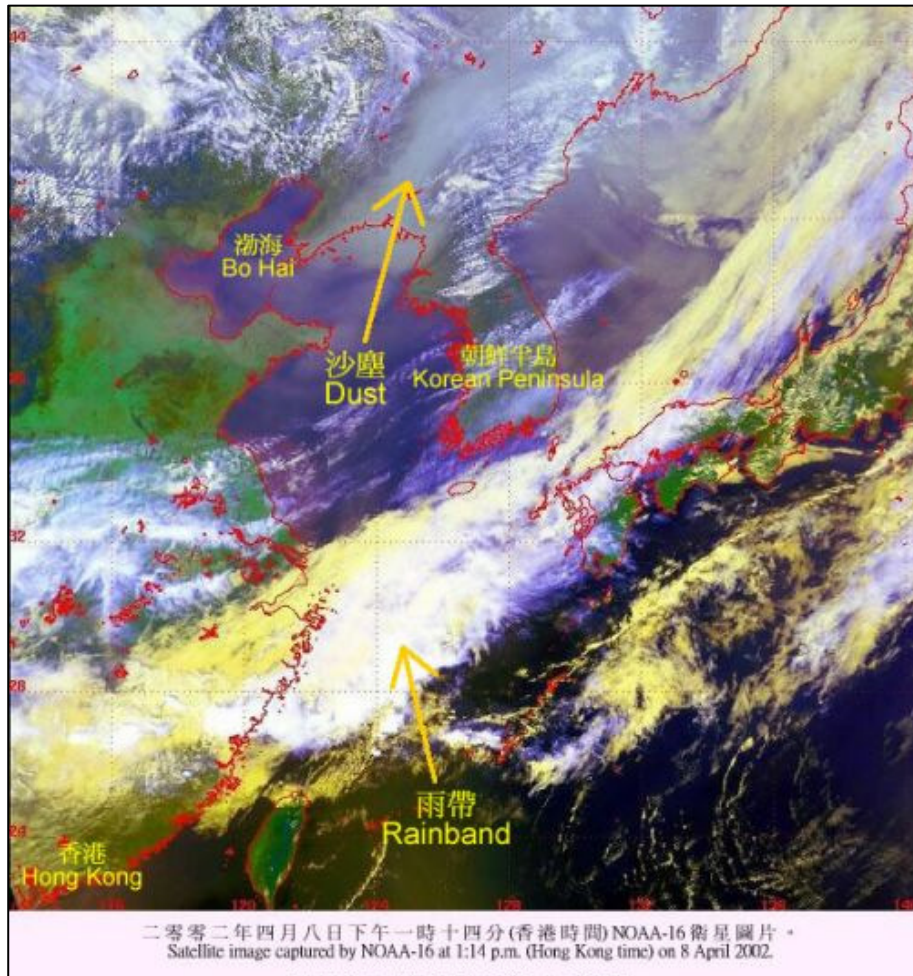
SOLID GEOLOGY

Geological Time	Rock Types	Named Rocks Divisions	Principal Rock Types / Characters	Symbols
Upper Jurassic Period	Sedimentary and volcanic rocks	High Island Formation	Mainly fine ash tuff (unsorted)	
Tertiary	Intrusive igneous rocks	---	Basalt	

GEOLOGICAL LINES

Fault (crossmark indicates downthrow side)	
--	--

2. The following show a satellite photograph and a mainland official reading news headlines about the sandstorm problem in China in 2002.



Headline: Beijing has been hit by choking sandstorm and experts warned that the sandstorm might be a major problem for the Beijing Olympics.

Headline: Beijing residents were shocked to find a thick brown dust covering trees, roads and cars. They have been forced to wear masks and scarves when going to work.

Headline: A terrible sandstorm enveloped Beijing in mid-March and reduced the visibility to less than 100 metres.



Mainland official

- (a) Name the areas affected by the sandstorm shown in the satellite photograph. (3 marks)
- (b) State why severe sandstorms often occur in early spring in Beijing. (3 marks)
- (c) Explain how human activities have accelerated the sandstorm problem in northern China. (4 marks)
- (d) If you were a mainland official, suggest *three* possible measures to alleviate this problem and assess their effectiveness. (6 marks)
- (e) Many people were worried that the worsening sandstorms might affect the Beijing Olympic Games in 2008. With reference to the headlines, explain how the Beijing Olympic Games might have been affected by sandstorms. (2 marks)

3. Table 3 shows the annual transport passenger journeys of different public transport modes in Hong Kong in 1995 and 2005 respectively.

Table 3

Year	Franchised buses	MTR	KCRC	Tramways	Minibuses	Ferries	Taxis	Residents' Coach Services	Others	Total
1995	1 279 914	812 519	356 455	114 143	636 785	81 112	472 041	34 416	39 945	3 827 330
2005	1 430 141	866 446	527 901	84 220	642 160	56 080	374 479	64 779	31 105	4 077 311

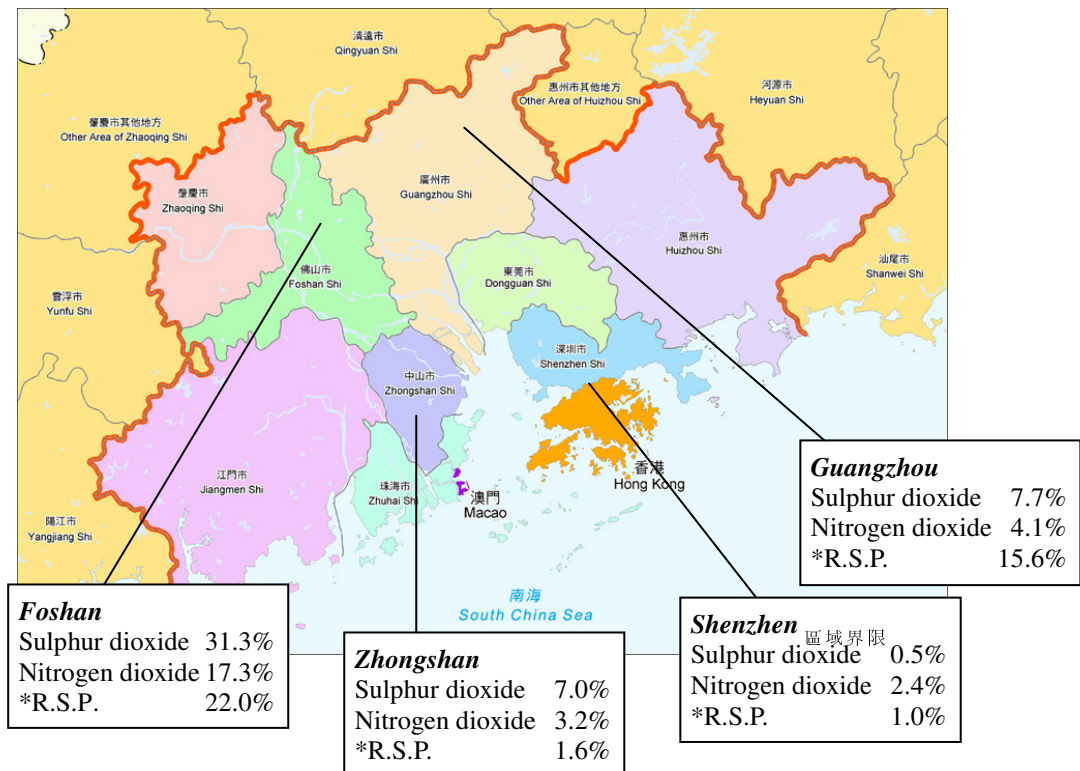
- (a) (i) What are the annual average growth rates of patronage for the different railway modes in Hong Kong over this period? (3 marks)
- (ii) Give reasons for the differential growth rates of railway patronage in Hong Kong. (3 marks)
- (b) (i) Draw a pie chart showing the modal split for these different public transport modes in 2005. (4 marks)
- (ii) Describe the major changes of the non-railway modes over time. (2 marks)
- (iii) Discuss the major problems associated with an increase in the on-road traffic. (6 marks)

4. Table 4a shows the economic development of Shenzhen and Guangzhou. Figure 4b lists the percentage of air pollutants in excess of the national standard.

Table 4a

		Shenzhen	Guangzhou
Industrial production (billion yuan RMB)		191	570
Industrial growth rate (%)		23.8	16.0
Foreign trade (million US\$)	Exports	9 825	3 374
	Imports	9 177	3 339
Top 7 pillar industries	1st	Computer software	Automobiles and accessories
	2nd	IT, micro-electronic components	Petrochemicals
	3rd	Video and audio products	Telecommunications
	4th	Electro-mechanical	IT industries
	5th	Pharmaceuticals	Iron and steel industries
	6th	Medical equipment	Pharmaceuticals
	7th	Biotechnology	Textiles and garments

Figure 4b



* R.S.P.: Respirable suspended particles

- (a) (i) Compare the industrial production and foreign trade of Shenzhen and Guangzhou. (2 marks)
- (ii) What has made industrial development in Shenzhen so successful? (5 marks)
- (b) (i) Draw a bar chart to compare the percentages of sulphur dioxide and nitrogen dioxide in excess of national standards in the cities shown in Figure 4b. (4 marks)
- (ii) Which city has got the worst air quality? Suggest reasons which have led to such serious air pollution in that city. (4 marks)
- (iii) Despite high industrial production in Shenzhen, the quality of air is better than that in other cities. Explain why. (3 marks)

Section E: Answer ONE question from this section. The elective question you choose to answer different from that in Section D. Each question carries 12 marks. (12%)

5. Explain how the geomorphological and geological conditions of an area have led to the occurrence of landslides. Evaluate the effectiveness of the measures adopted by HKSAR Government in preventing this hazard. (12 marks)
6. Using annotated diagrams, illustrate how solar radiation influences global pressure patterns in January and July. Besides solar radiation, discuss other factors which affect the pressure and wind systems in East Asia. (12 marks)
7. Discuss the factors affecting the location of container ports. As the world's busiest container port, how has the container port of Hong Kong facilitated the growth of the logistics industry in Hong Kong? (12 marks)
8. *The shift of industries from low-tech to high-tech industries in the Zhujiang Delta is the only way to maintain the region's competitiveness under the impact of globalization.*
Elaborate on the above statement. What are the socio-economic impacts resulting from such a change? (12 marks)

END OF PAPER