

Candidate Forename		Candidate Surname	
-------------------------------	--	------------------------------	--

Centre Number						Candidate Number				
--------------------------	--	--	--	--	--	-----------------------------	--	--	--	--

**OXFORD CAMBRIDGE AND RSA EXAMINATIONS
GENERAL CERTIFICATE OF SECONDARY EDUCATION**

B622/02

GATEWAY SCIENCE

SCIENCE B

**Unit 2 Modules B2 C2 P2
(Higher Tier)**

MONDAY 18 JANUARY 2010: Morning

DURATION: 1 hour

SUITABLE FOR VISUALLY IMPAIRED CANDIDATES

**Candidates answer on the Question Paper
A calculator may be used for this paper**

OCR SUPPLIED MATERIALS:

None

OTHER MATERIALS REQUIRED:

Pencil

Ruler (cm/mm)

READ INSTRUCTIONS OVERLEAF

INSTRUCTIONS TO CANDIDATES

- **Write your name clearly in capital letters, your Centre Number and Candidate Number in the boxes on the first page.**
- **Use black ink. Pencil may be used for graphs and diagrams only.**
- **Read each question carefully and make sure that you know what you have to do before starting your answer.**
- **Answer ALL the questions.**
- **Write your answer to each question in the space provided, however additional paper may be used if necessary.**

INFORMATION FOR CANDIDATES

- **The number of marks is given in brackets [] at the end of each question or part question.**
- **A list of physics equations is printed on page three.**
- **The Periodic Table is printed on the back page.**
- **The total number of marks for this paper is 60.**

EQUATIONS

$$\text{efficiency} = \frac{\text{useful energy output}}{\text{total energy input}}$$

$$\text{energy} = \text{mass} \times \text{specific heat capacity} \times \text{temperature change}$$

$$\text{energy} = \text{mass} \times \text{specific latent heat}$$

$$\text{fuel energy input} = \text{waste energy output} + \text{electrical energy output}$$

$$\text{power} = \text{voltage} \times \text{current}$$

$$\text{energy supplied} = \text{power} \times \text{time}$$

$$\text{energy (kilowatt hours)} = \text{power (kW)} \times \text{time (h)}$$

$$\text{wave speed} = \text{frequency} \times \text{wavelength}$$

Answer ALL the questions.

SECTION A – MODULE B2

1 Read the information carefully.

Hirta is a small island in the north of Scotland.

The island is cold and is covered in rocky hills.

Many sheep live on the island.

Scientists have studied these sheep over many years.

Usually only the largest sheep survive the winter.

Now the scientists are finding that the average mass of sheep on the island is going down.

(a) Suggest why the largest sheep are more likely to survive the winter.

[1]

(b) Smaller sheep are now surviving the winter.

This may be because the average temperature of the Earth is increasing.

Complete these sentences about this increase in temperature.

The increase in the average temperature of the Earth is called _____ .

It is caused by the increased release of the gas _____ into the air.

[2]

[Total: 3]

2 Mosquitoes are small organisms that feed on blood.

***Culex pipiens* is the scientific name for a type of mosquito.**

This type of mosquito feeds on the blood of live birds.

(a) (i) Birds are vertebrates but mosquitoes are invertebrates.

What do all vertebrates have that invertebrates lack?

_____ [1]

(ii) The mosquito is a PARASITE.

What is meant by the term parasite?

_____ [1]

(b) Many years ago, tunnels were dug under London for underground trains.

A group of *Culex pipiens* mosquitoes were trapped in the tunnels and have lived there ever since.

Another group of the mosquitoes still lives above ground.

Complete these sentences about the two groups of mosquitoes by using words from the list.

CLASSES

COMMUNITIES

HABITATS

POPULATIONS

The mosquitoes that live together in the tunnels and the mosquitoes that live above ground are now separate _____ of mosquitoes.

The two groups of mosquitoes have developed slightly different features because they have adapted to live in different

_____ .

[2]

(c) (i) Scientists have recently trapped some mosquitoes from the tunnels.

They mated them with *Culex pipiens* mosquitoes from above ground.

Studying the offspring made the scientists decide to give the mosquitoes living in the tunnels a new scientific name, *Culex molestus*.

Suggest why the scientists have given the mosquitoes a new scientific name.

[2]

- (ii) Four people gave explanations for the differences in the mosquitoes.

ANNA

The two groups of mosquitoes became adapted to different conditions.

PAUL

The mosquitoes living in the tunnels have mutated in order to become better adapted to the new conditions.

LIZ

Natural selection must have happened.

RESHMA

The two groups of mosquitoes now have different genes.

Write down the name of the person whose explanation is WRONG.

name _____

[1]

[Total: 7]

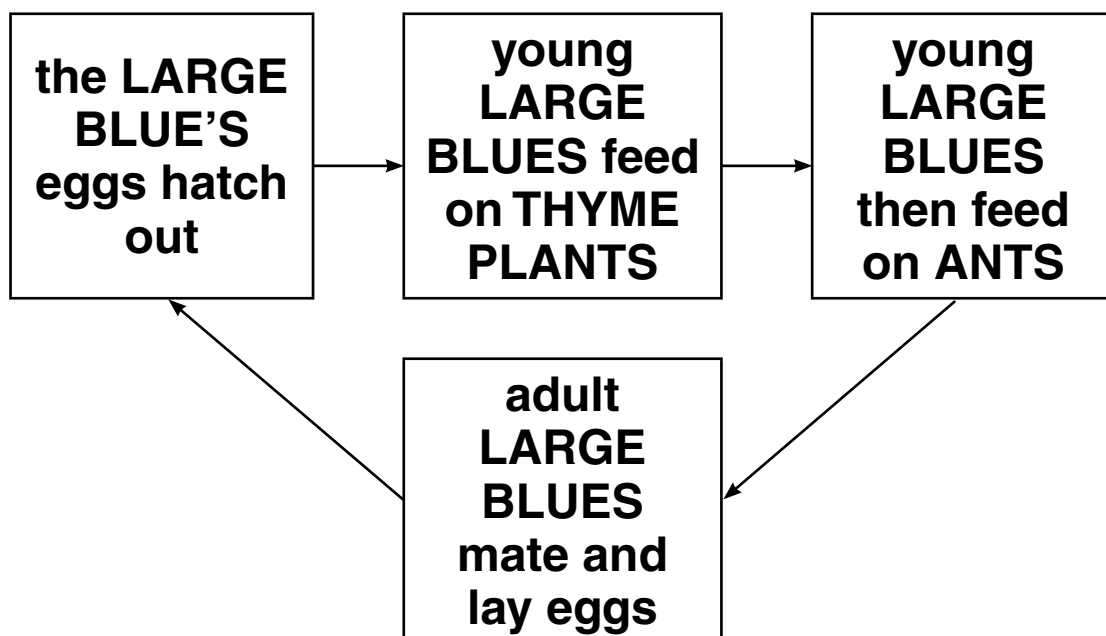
3 The Large Blue is a butterfly which lives in certain parts of England.

These areas contain patches of bare ground where ants live.

By 1974 the Large Blue had become an endangered species.

(a) Scientists tried to find out why the Large Blue had become endangered.

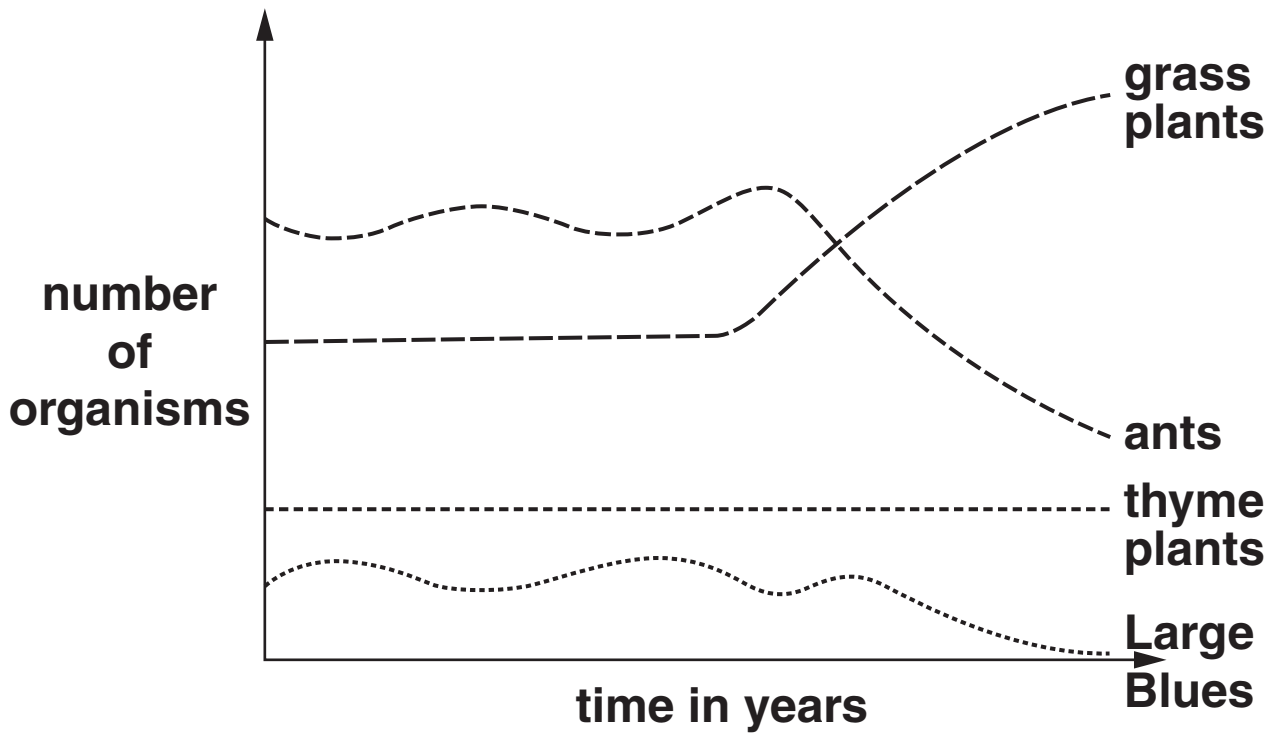
They looked at the Large Blue's life cycle.



The scientists counted the number of Large Blues, thyme plants, grass plants and ants in an area.

The scientists counted the organisms regularly over several years.

The graph shows their results.



Suggest what caused the Large Blue to become endangered.

Use information from the LIFE CYCLE and the GRAPH to help you.

[2]

(b) There is now a conservation plan to save the Large Blue.

Many people think that it is important to save animals such as the Large Blue.

Write down ONE reason why they might think this.

[1]

[Total: 3]

4 Lichens are organisms that usually live on walls and tree trunks.

They consist of fungi that have small organisms called algae living inside them.

(a) Explain why fungi are NOT classified as plants.

_____ [1]

(b) The algae in the lichen make food by photosynthesis.

Complete the balanced symbol equation for photosynthesis.



(c) Lichens can be described as crusty, leafy or bushy according to their shape.

The table shows the percentage of each type found on trees.

Trees were sampled at different distances downwind from a factory.

TYPE OF LICHEN	PERCENTAGE OF EACH TREE TRUNK COVERED BY LICHEN		
	2 km FROM FACTORY	10 km FROM FACTORY	20 km FROM FACTORY
crusty	5	20	30
leafy	0	10	35
bushy	0	0	25

(i) Lichens are often called INDICATOR SPECIES.

Use the information in the table to explain what this means.

[2]

(ii) Look at the table.

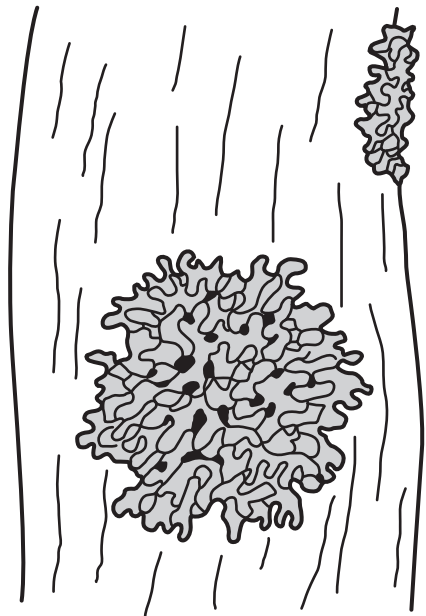
What is the main difference between the distributions of crusty lichens and bushy lichens?

[1]

(iii) These diagrams show a bushy lichen and a crusty lichen.



a bushy lichen



a crusty lichen

Use these diagrams to explain the different distribution of the lichens shown in the table.

[1]

[Total: 7]

SECTION B – MODULE C2

5 This question is about a car.

(a) Steel is an alloy of iron.

Steel is used instead of iron to make the car body.

Explain why.

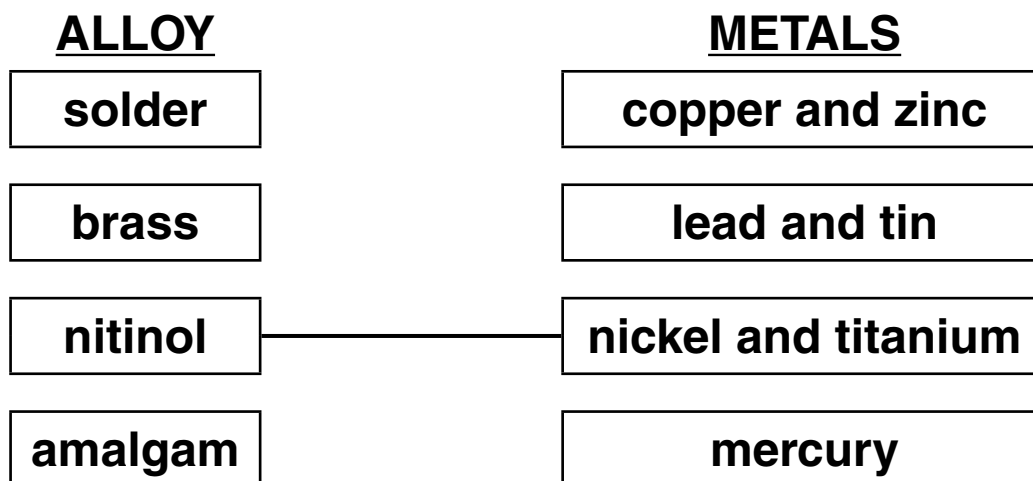
[2]

(b) Alloys are mixtures containing metals.

Four alloys are listed below.

Draw straight lines to match each ALLOY to the METALS it contains.

One has been done for you.



[2]

(c) Nitinol is an alloy of nickel and titanium.

This alloy has ‘shape memory property’.

The alloy is used to make spectacle frames.

Explain how the shape memory property of the alloy is useful for making spectacle frames.

[1]

[Total: 5]

6 Large grains (lumps) of wheat are changed into a fine powder.

The fine powder is called flour.

(a) From 1987 to 1997 there were 129 explosions in flour mills in America.

An explosion is a very fast chemical reaction.

Describe what is made during an explosion.

_____ [1]

(b) Flour and wheat react with oxygen.

Powdered flour reacts more quickly than lumps of wheat.

Explain why.

Use ideas about collisions between particles.

_____ [2]

[Total: 3]

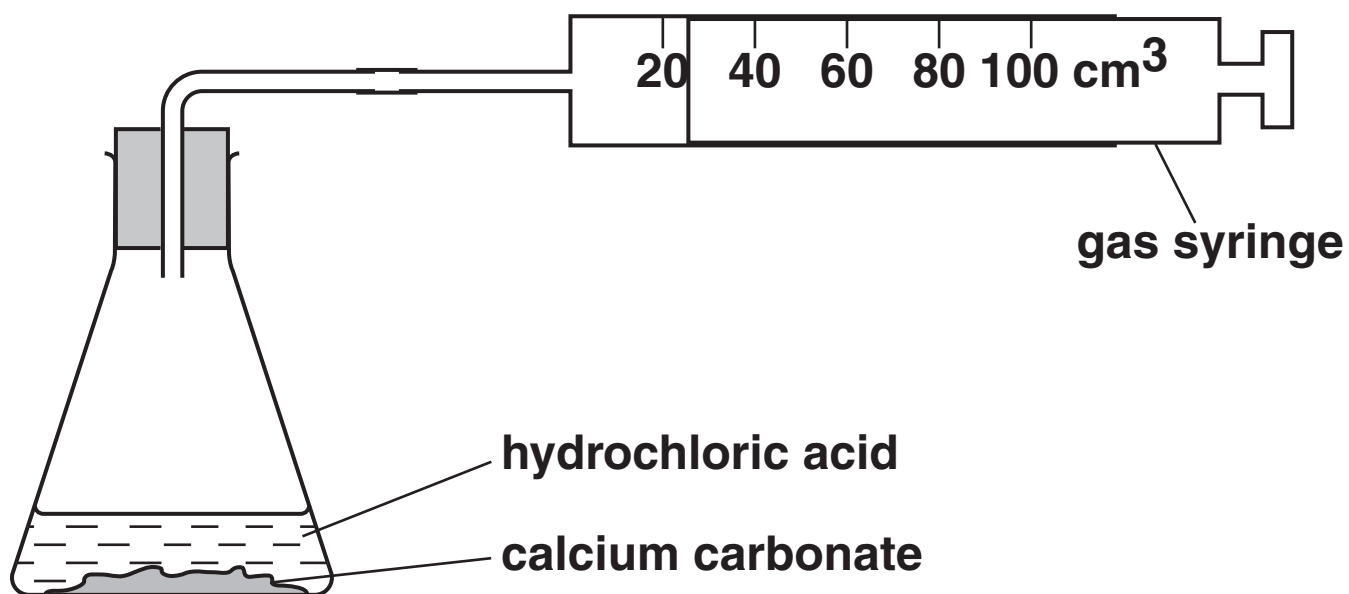
7 Ryan and Naomi investigate the reaction between 1.0 g of calcium carbonate and hydrochloric acid.

Calcium chloride, carbon dioxide and water are made in this reaction.

(a) Write the WORD equation for this reaction.

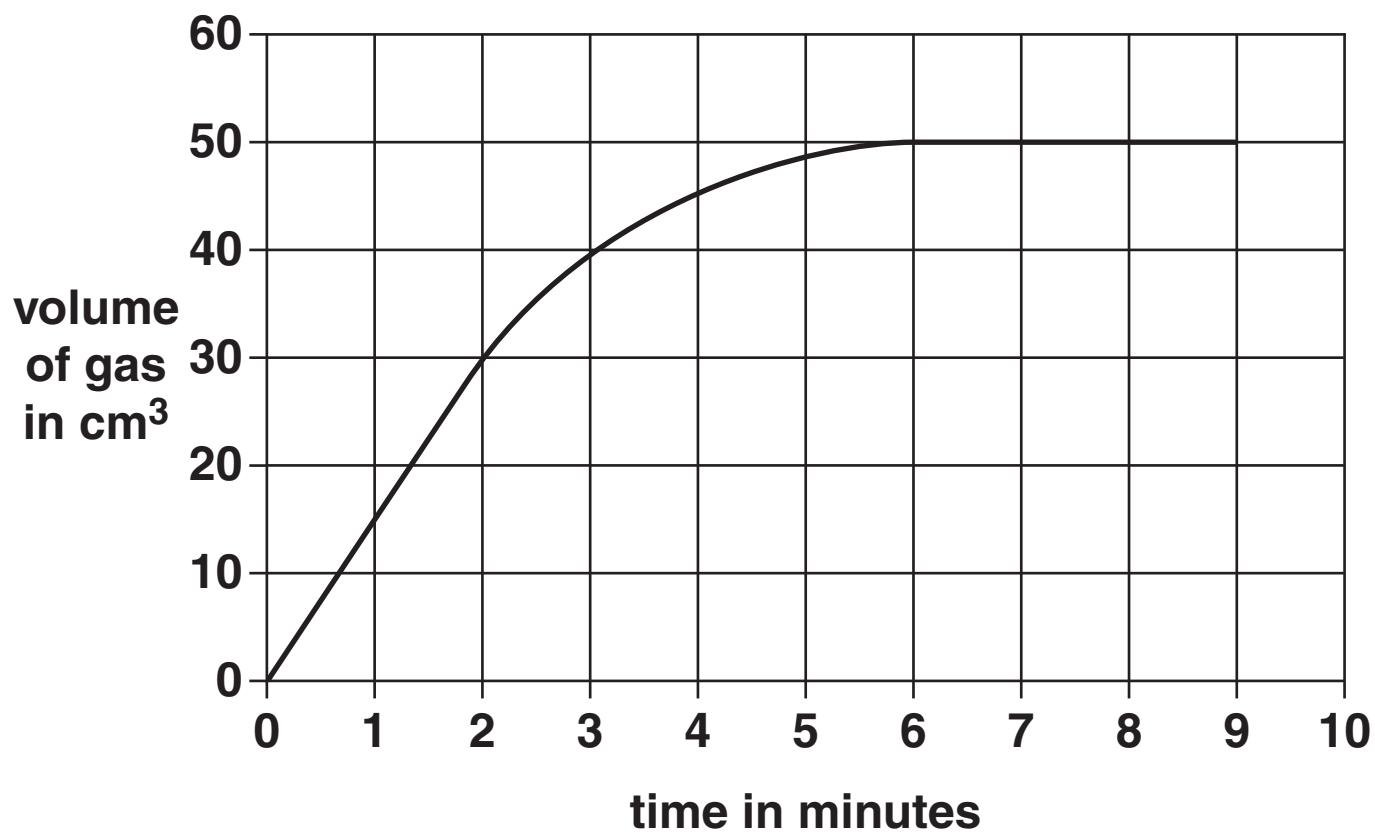
_____ → _____ [1]

(b) The diagram shows the apparatus they use.



Look at the graph.

It shows their results from the experiment.



- (i) Calculate the rate of this reaction during the first two minutes of the experiment.

answer _____ cm^3/min [2]

- (ii) In a second experiment, Ryan and Naomi use a MORE concentrated solution of hydrochloric acid.

The rate of reaction in the second experiment is higher.

Explain why. Use ideas about collisions between particles.

[1]

[Total: 4]

8 This question is about copper.

(a) Copper, Cu, is extracted by heating copper carbonate, CuCO_3 , with carbon, C.

Carbon dioxide is also made.

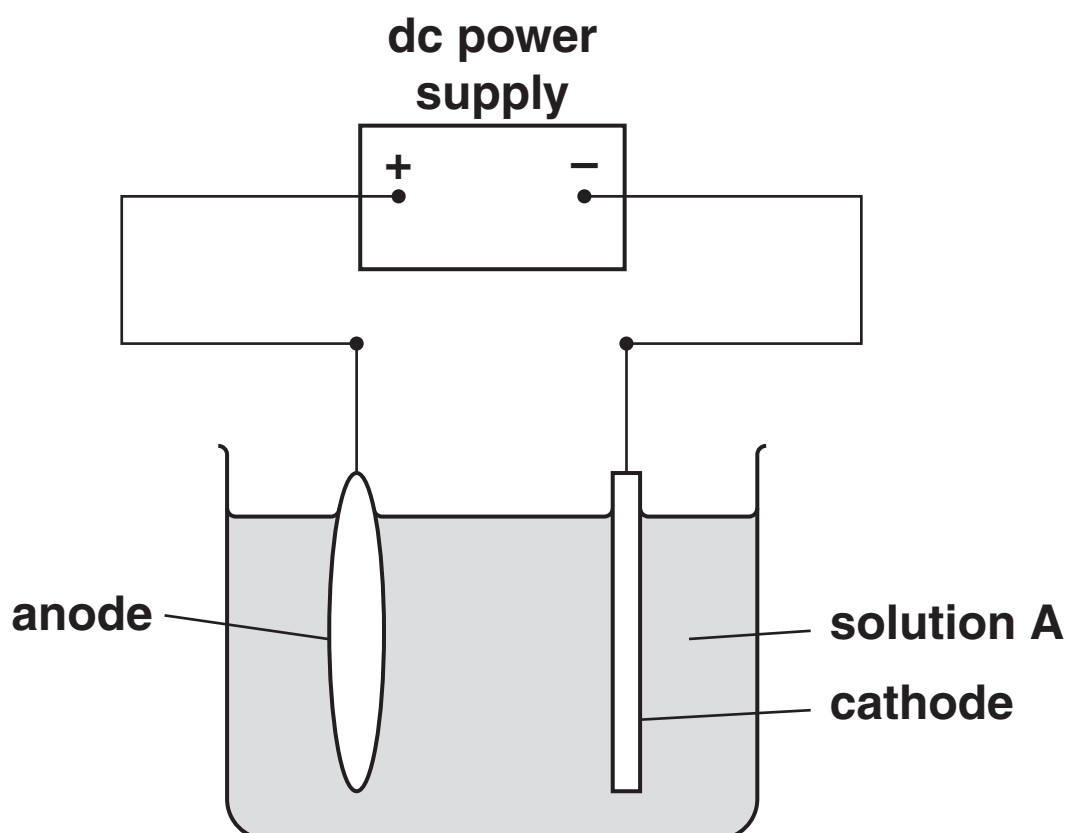
Write a balanced SYMBOL equation for this reaction.

_____ [2]

(b) The copper that is made is impure.

Look at the diagram.

It shows the apparatus used to purify copper.



The process used to purify copper is electrolysis.

Complete these sentences.

The name of solution A is _____ .

The anode is made of _____ .

The cathode is made of _____ .

[3]

[Total: 5]

9 This question is about the Earth.

The Earth has three layers. These layers are the crust, the mantle and the core.

(a) What is the name given to the crust and outer part of the mantle?

Choose from the list.

CONTINENTAL PLATE

LAVA

LITHOSPHERE

MAGMA

OCEANIC PLATE

SURFACE

answer _____ [1]

(b) The Earth's crust is made of tectonic plates.

These plates FLOAT on the mantle.

Explain why these plates float on the mantle.

The data in the table may help you.

ROCK TYPE	AVERAGE DENSITY IN kg/m³
tectonic plate	2660
mantle	5518

[1]

(c) Granite is a rock made when magma cools.

Granite contains large crystals.

Explain why. Use ideas about the RATE OF COOLING of the magma.

[1]

[Total: 3]

SECTION C – MODULE P2

10 This question is about nuclear radiation.

(a) The three types of radiation will penetrate (go through) different materials.

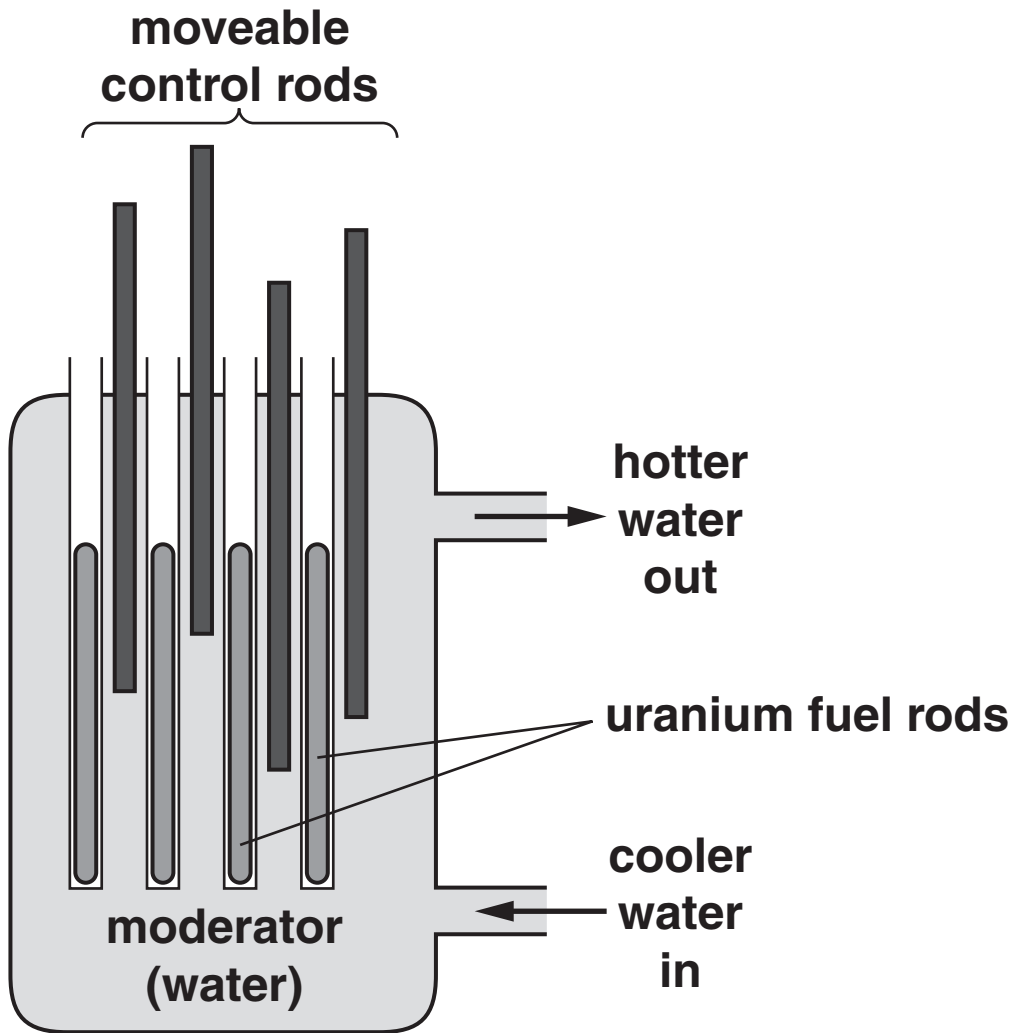
Complete the table for each type of radiation.

TYPE OF NUCLEAR RADIATION	DOES IT PENETRATE A SHEET OF PAPER?	DOES IT PENETRATE 1 mm OF ALUMINIUM?	DOES IT PENETRATE SEVERAL mm OF LEAD?
alpha	_____	_____	no
beta	yes	_____	_____
_____	yes	_____	yes

[3]

(b) Nuclear power stations generate electrical energy.

(i) Nuclear power stations use fuel rods.



Complete the sentences.

Fuel rods release energy in the form of

_____ .

The fuel rods produce a waste material called

_____ .

[2]

- (ii) The power station has an efficiency of 0.4 (40%).

The electrical power output is 1200 MW.

Calculate the power WASTED in the power station.

The equations on page 3 may help you.

answer _____ MW

[3]

(c) Nuclear fuels and fossil fuels are used to generate electricity.

Write about the ADVANTAGES and DISADVANTAGES of using nuclear power.

[3]

[Total: 11]

11 Look at the information about using some electrical appliances.

APPLIANCE	POWER IN kW	TIME USED IN HOURS
toaster	1.5	0.1
washing machine	3.0	2.0
kettle	2.5	0.2
microwave oven	2.0	0.3

(a) The kettle is used for 0.2 hours.

Calculate the number of kilowatt hours used by the kettle.

The equations on page 3 may help you.

answer _____ kWh [1]

(b) The cost of one kWh of electricity is 12p.

Calculate the cost of using the kettle for 0.2 hours.

answer _____ pence [1]

[Total: 2]

12 This question is about the Sun.

(a) A photocell collects energy from the Sun.

Photocells are useful in remote locations.

(i) Write down one other ADVANTAGE of using photocells.

_____ [1]

(ii) Write down one DISADVANTAGE of using photocells.

_____ [1]

(b) The Sun produces solar flares.

These can affect satellites.

Sometimes these flares reach the Earth.

Describe what could happen if a solar flare reaches the Earth.

_____ [1]

(c) Stars are different sizes.

(i) The Sun is a MEDIUM-WEIGHT star.

Near the end of its life it will change into a red giant.

What forms NEXT?

Choose from the list.

BLACK HOLE

NEUTRON STAR

PLANETARY NEBULA

SUPERNOVA

answer _____ [1]

- (ii) A HEAVY-WEIGHT star also changes into a red giant near the end of its life.

What happens NEXT?

Choose from the list.

DOES NOT CHANGE

PLANETARY NEBULA

SUPERNOVA

WHITE DWARF

answer _____ [1]

[Total: 5]

13 The Big Bang theory describes that

- **all galaxies are moving away from us**
- **distant galaxies are moving away quicker.**

Scientists can use the Big Bang theory to calculate the age of the Universe.

Explain how they do this. Use ideas about RED-SHIFT.

[2]

[Total: 2]

END OF QUESTION PAPER



Copyright Information

OCR is committed to seeking permission to reproduce all third-party content that it uses in its assessment materials. OCR has attempted to identify and contact all copyright holders whose work is used in this paper. To avoid the issue of disclosure of answer-related information to candidates, all copyright acknowledgements are reproduced in the OCR Copyright Acknowledgements Booklet. This is produced for each series of examinations, is given to all schools that receive assessment material and is freely available to download from our public website (www.ocr.org.uk) after the live examination series.

If OCR has unwittingly failed to correctly acknowledge or clear any third-party content in this assessment material, OCR will be happy to correct its mistake at the earliest possible opportunity.

For queries or further information please contact the Copyright Team, First Floor, 9 Hills Road, Cambridge CB2 1GE.

OCR is part of the Cambridge Assessment Group; Cambridge Assessment is the brand name of University of Cambridge Local Examinations Syndicate (UCLES), which is itself a department of the University of Cambridge.

