

<b>Candidate Forename</b>		<b>Candidate Surname</b>	
-------------------------------	--	------------------------------	--

<b>Centre Number</b>						<b>Candidate Number</b>				
--------------------------	--	--	--	--	--	-----------------------------	--	--	--	--

**OXFORD CAMBRIDGE AND RSA EXAMINATIONS  
GENERAL CERTIFICATE OF SECONDARY EDUCATION**

**B622/01**

**GATEWAY SCIENCE**

**SCIENCE B**

**Unit 2 Modules B2 C2 P2  
(Foundation Tier)**

**MONDAY 18 JANUARY 2010: Morning**

**DURATION: 1 hour**

**SUITABLE FOR VISUALLY IMPAIRED CANDIDATES**

**Candidates answer on the Question Paper  
A calculator may be used for this paper**

**OCR SUPPLIED MATERIALS:**

**None**

**OTHER MATERIALS REQUIRED:**

**Pencil**

**Ruler (cm/mm)**

**READ INSTRUCTIONS OVERLEAF**

## **INSTRUCTIONS TO CANDIDATES**

- Write your name clearly in capital letters, your Centre Number and Candidate Number in the boxes on the first page.
- Use black ink. Pencil may be used for graphs and diagrams only.
- Read each question carefully and make sure that you know what you have to do before starting your answer.
- Answer ALL the questions.
- Write your answer to each question in the space provided, however additional paper may be used if necessary.

## **INFORMATION FOR CANDIDATES**

- The number of marks is given in brackets [ ] at the end of each question or part question.
- A list of physics equations is printed on page three.
- The Periodic Table is printed on the back page.
- The total number of marks for this paper is 60.

## EQUATIONS

$$\text{efficiency} = \frac{\text{useful energy output}}{\text{total energy input}}$$

$$\text{wave speed} = \text{frequency} \times \text{wavelength}$$

$$\text{power} = \text{voltage} \times \text{current}$$

$$\text{energy (kilowatt hours)} = \text{power (kW)} \times \text{time (h)}$$

**Answer ALL the questions.**

**SECTION A – MODULE B2**

**1 Read the information carefully.**

**Hirta is a small island in the north of Scotland.**

**The island is cold and is covered in rocky hills.**

**Many sheep live on the island.**

**They all have a thick wool coat and sharp hooves.**

**Scientists have studied these sheep over many years.**

**Usually only the largest sheep survive the winter.**

**Now the scientists are finding that the average mass of sheep on the island is going down.**

**(a) The sheep are adapted to their environment and can live on this island.**

**Complete the sentences to show how.**

**The sheep have a thick wool coat to**

---

---

**The sheep have sharp hooves to**

\_\_\_\_\_ . [2]

**(b) The sheep on the island are all competing with each other.**

**Write down ONE thing that they are competing for.**

\_\_\_\_\_ [1]

**(c) Smaller sheep are now surviving the winter.**

**This may be because the average temperature of the Earth is increasing.**

**Complete these sentences about this increase in temperature.**

**The increase in the average temperature of the Earth is called \_\_\_\_\_ .**

**It is caused by the increased release of the gas \_\_\_\_\_ into the air.**

**One reason for the increased release of this gas is that the human population is \_\_\_\_\_ .**

[3]

[Total: 6]

**2 Mosquitoes are small organisms that do not have a backbone.**

***Culex pipiens* is the scientific name for a type of mosquito.**

**This type of mosquito feeds on the blood of live birds.**

**(a) What type of organism is a mosquito?**

**Put a tick (✓) in the box next to the correct answer.**

**an animal and an invertebrate**

**a plant and an invertebrate**

**an animal and a vertebrate**

**a plant and a vertebrate**

**[1]**

(b) Many years ago, tunnels were dug under London for underground trains.

A group of *Culex pipiens* mosquitoes were trapped in the tunnels and have lived there ever since.

The mosquitoes now feed on the blood of mice in the tunnels.

Complete these sentences by using words from the list.

CLASS

COMMUNITY

HABITAT

POPULATION

The tunnels formed a new \_\_\_\_\_  
for organisms to live in.

The mice and mosquitoes that live together in the underground tunnels are called a \_\_\_\_\_ . [2]

**(c) Scientists have recently trapped some mosquitoes from the tunnels.**

**They mated them with *Culex pipiens* mosquitoes from above ground.**

**Studying the offspring made the scientists decide to give the mosquitoes living in the tunnels a new scientific name, *Culex molestus*.**

**Suggest why the scientists have given the mosquitoes a new scientific name.**

---

---

---

**[2]**

**[Total: 5]**



**3 The Large Blue is a butterfly which lives in certain parts of England.**

**These areas contain patches of bare ground where ants live.**

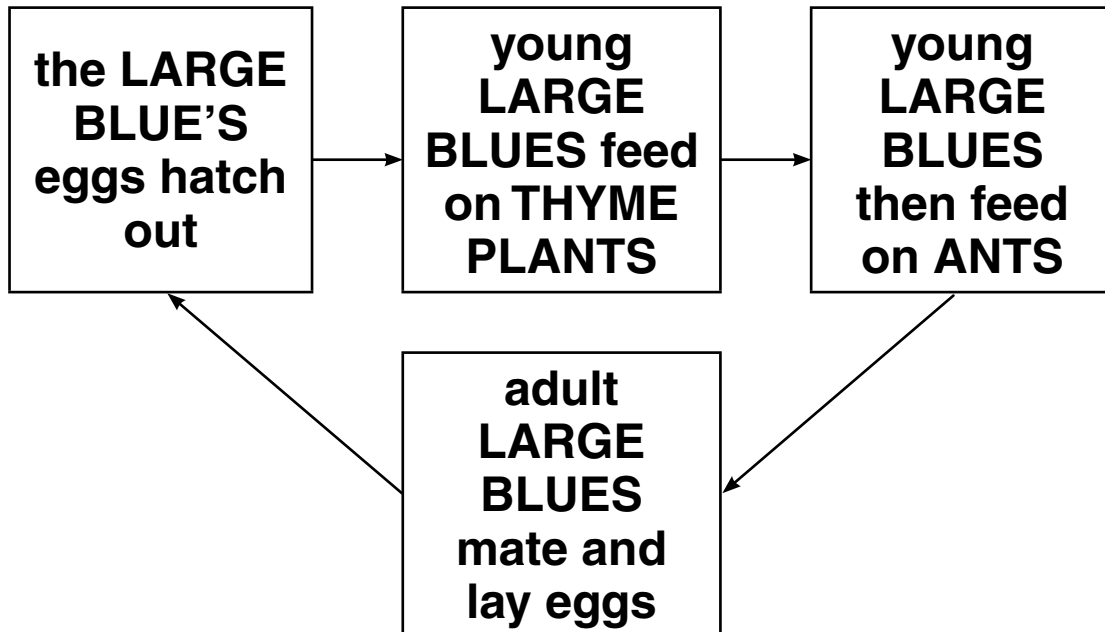
**By 1974 the Large Blue had become an ENDANGERED species.**

**(a) What does endangered mean?**

\_\_\_\_\_ [1]

**(b) Scientists tried to find out why the Large Blue had become endangered.**

**They looked at the Large Blue's life cycle.**



**Choose names of organisms from the life cycle to finish these sentences.**

**The organisms that make food by photosynthesis are \_\_\_\_\_ .**

**The organisms that are prey organisms are \_\_\_\_\_ .**

**[2]**

**(c) The scientists counted the number of Large Blues, thyme plants, grass plants and ants in an area.**

**(i) What piece of equipment would the scientists use to collect adult Large Blues for counting?**

**Put a ring around the correct answer in this list.**

**NET**

**PIT-FALL TRAP**

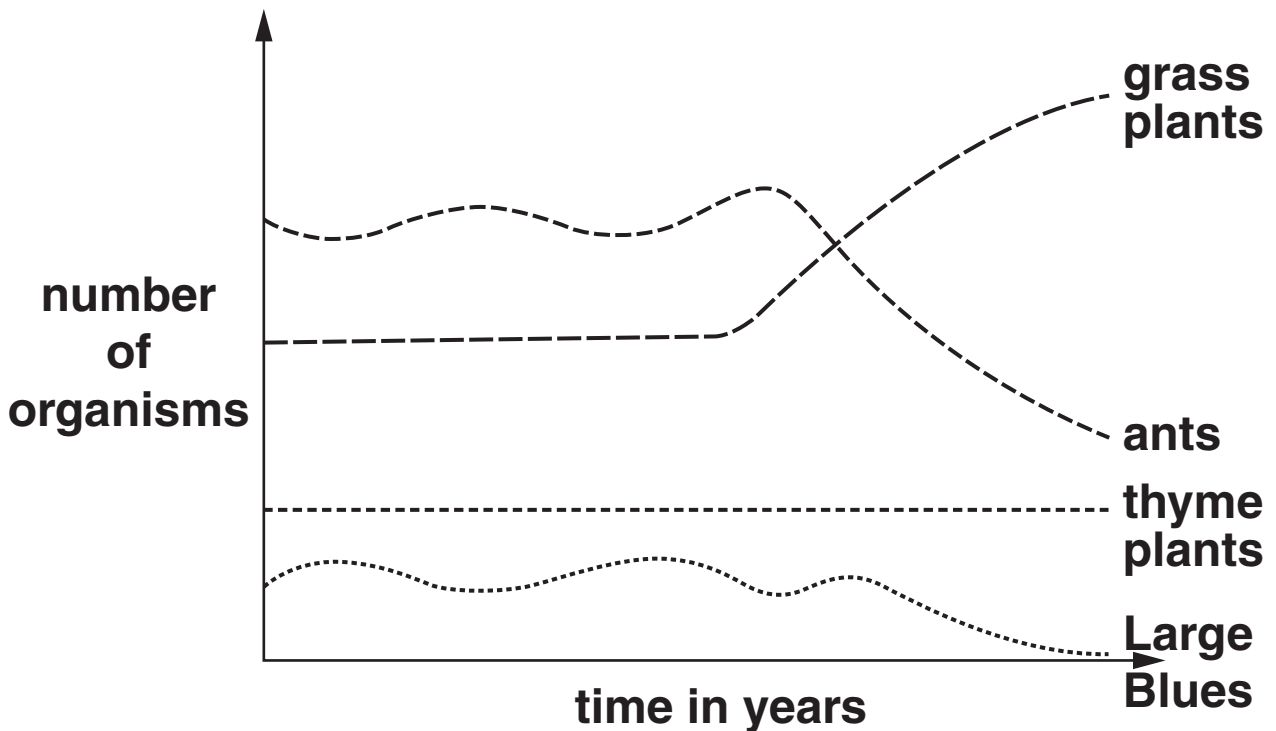
**POOTER**

**QUADRAT**

**[1]**

(ii) The scientists counted the organisms regularly over several years.

The graph shows their results.



Suggest what caused the Large Blue to become endangered.

Use information from the LIFE CYCLE and the GRAPH to help you.

---

---

---

[2]

[Total: 6]

**4 Lichens are organisms that usually live on walls and tree trunks.**

**They consist of fungi that have small organisms called algae living inside them.**

**The algae make their own food by photosynthesis.**

**To do this they need a green chemical.**

**Some of this food is passed to the fungi.**

**(a) What is the name of the green chemical?**

\_\_\_\_\_ [1]

**(b) Write down the name of the food substance made by photosynthesis.**

\_\_\_\_\_ [1]

**(c) Lichens do NOT grow well on trees or walls that are close to towns or factories.**

**Suggest why this is.**

\_\_\_\_\_ [1]

**[Total: 3]**

**SECTION B – MODULE C2**

**5 This question is about a car.**

**(a) Steel is used to make the car body.**

**Write down the names of TWO other materials, which are used to make cars.**

**1 \_\_\_\_\_**

**2 \_\_\_\_\_ [2]**

**(b) Steel is an alloy of iron.**

**Steel is used instead of iron to make the car body.**

**Explain why.**

\_\_\_\_\_

\_\_\_\_\_

\_\_\_\_\_ [2]

**(c) The car is painted.**

**Write down TWO reasons why the car is painted.**

**1 \_\_\_\_\_**

**2 \_\_\_\_\_ [2]**

**[Total: 6]**

**6 Large grains (lumps) of wheat are changed into a fine powder.**

**The fine powder is called flour.**

**(a) From 1987 to 1997 there were 129 explosions in flour mills in America.**

**An explosion is a very fast chemical reaction.**

**Describe what is made during an explosion.**

\_\_\_\_\_ [1]

**(b) Flour and wheat react with oxygen.**

**Powdered flour reacts more quickly than lumps of wheat.**

**Explain why.**

**Use ideas about collisions between particles.**

\_\_\_\_\_  
\_\_\_\_\_  
\_\_\_\_\_ [2]

**[Total: 3]**

- 7 Ryan and Naomi investigate the reaction between 1.0 g of calcium carbonate and hydrochloric acid.

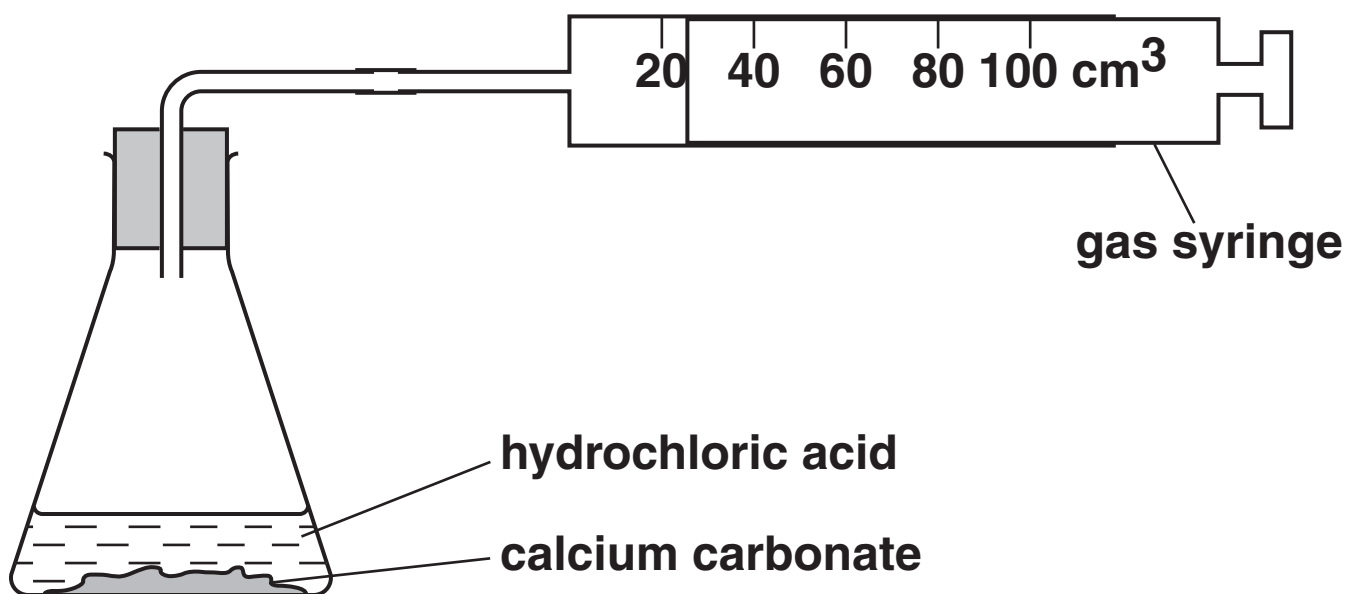
Calcium chloride, carbon dioxide and water are made in this reaction.

- (a) Write the WORD equation for this reaction.

\_\_\_\_\_ → \_\_\_\_\_ [1]

- (b) The diagram shows the apparatus they use.

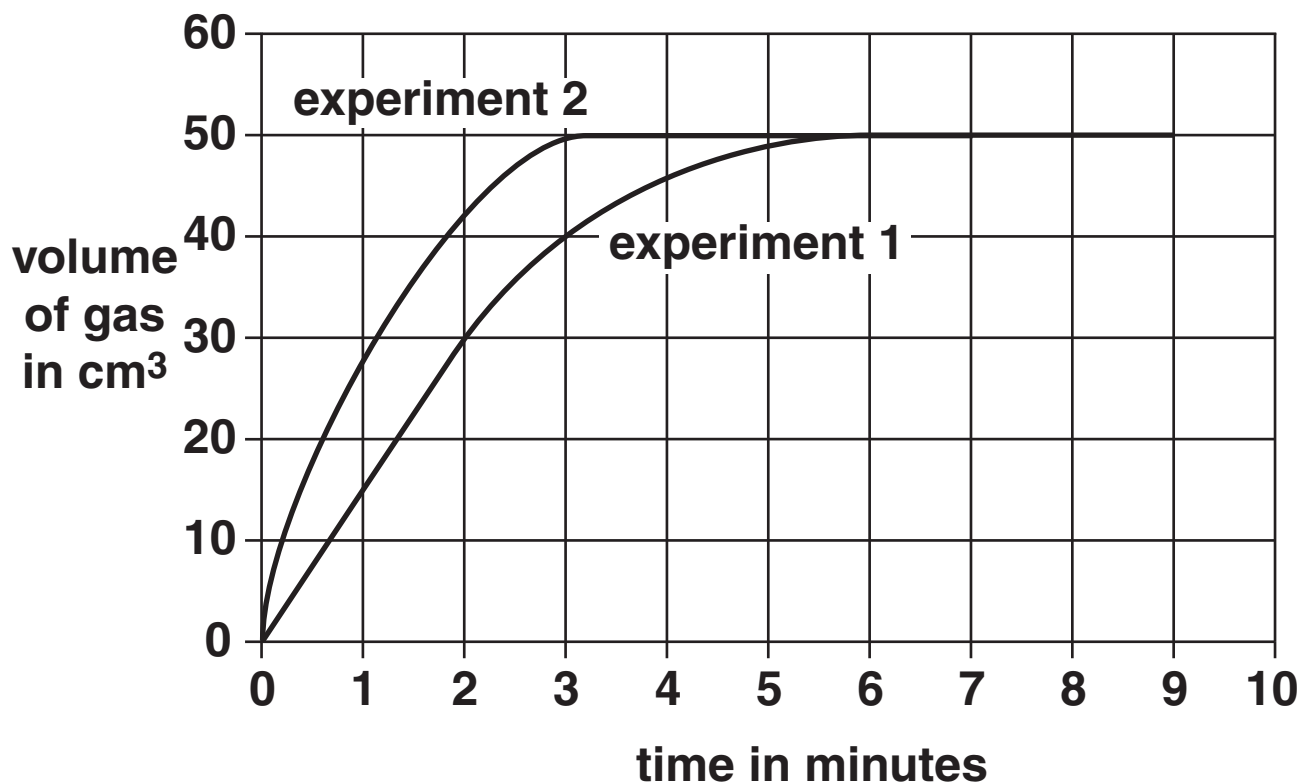
They do the experiment twice.





Look at the graph.

It shows their results from the two experiments.



(i) Look at the curve for EXPERIMENT 1.

How long does it take to collect 40 cm<sup>3</sup> of gas?

\_\_\_\_\_ minutes [1]

(ii) Look at the curves for experiments 1 and 2.

How can you tell that experiment 2 is faster than experiment 1?

\_\_\_\_\_  
\_\_\_\_\_ [1]

[Total: 3]

8 This question is about the gases in the air.

(a) Look at the list.

Put a ring around ONE gas which is NOT normally present in the air.

CARBON DIOXIDE

HYDROGEN

NITROGEN

OXYGEN

WATER VAPOUR

[1]

(b) Two processes affect the level of gases in the air.

Draw a straight line to match each PROCESS to its EFFECT.

PROCESS

EFFECT

photosynthesis

no change to level of oxygen in the air

respiration

decreases level of oxygen in the air

increases level of oxygen in the air

[1]

**(c) Burning fossil fuels makes sulfur dioxide.**

**Sulfur dioxide causes acid rain.**

**Describe ONE environmental problem caused by acid rain.**

---

---

[1]

**[Total: 3]**

**9 This question is about volcanoes.**

**Look at the diagram opposite of a volcano erupting.**

**(a) Complete the labels on the diagram.**

**Choose from the list.**

**CRUST**

**LAVA**

**MAGMA**

**[2]**

**(b) Volcanoes can be dangerous.**

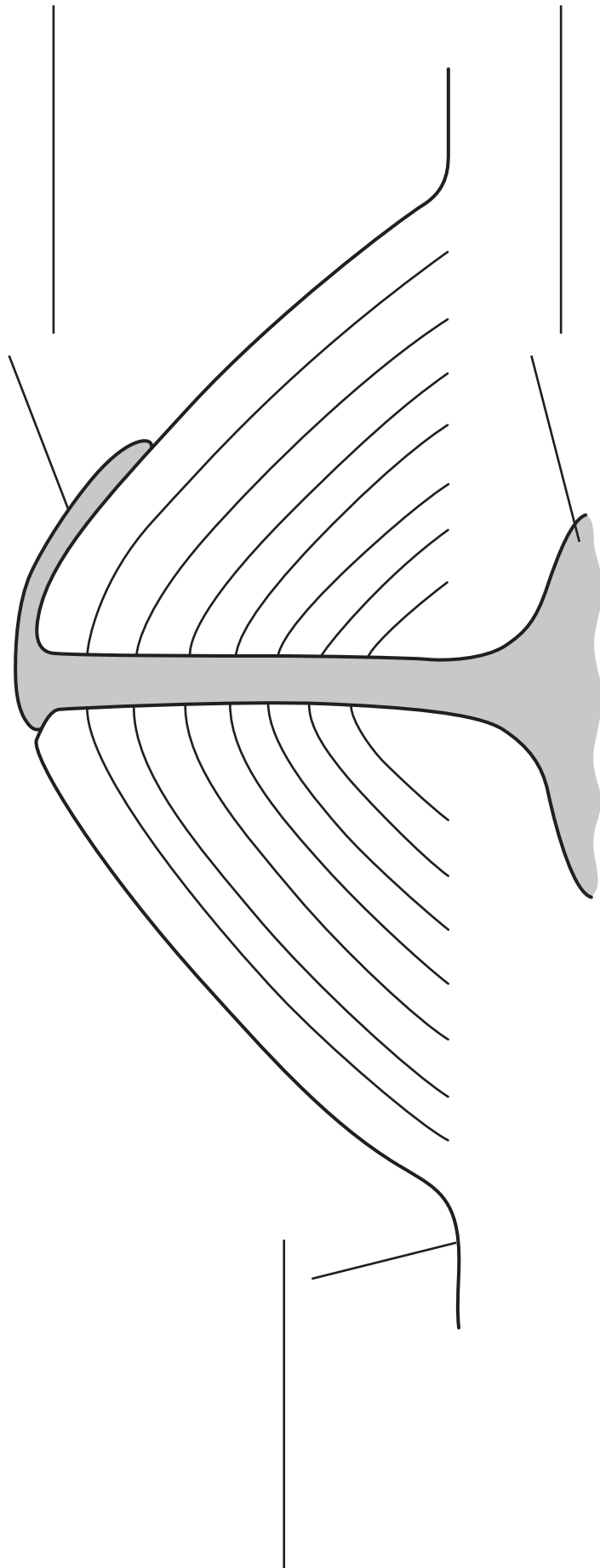
**Suggest why some people live near volcanoes.**

---

---

**[1]**

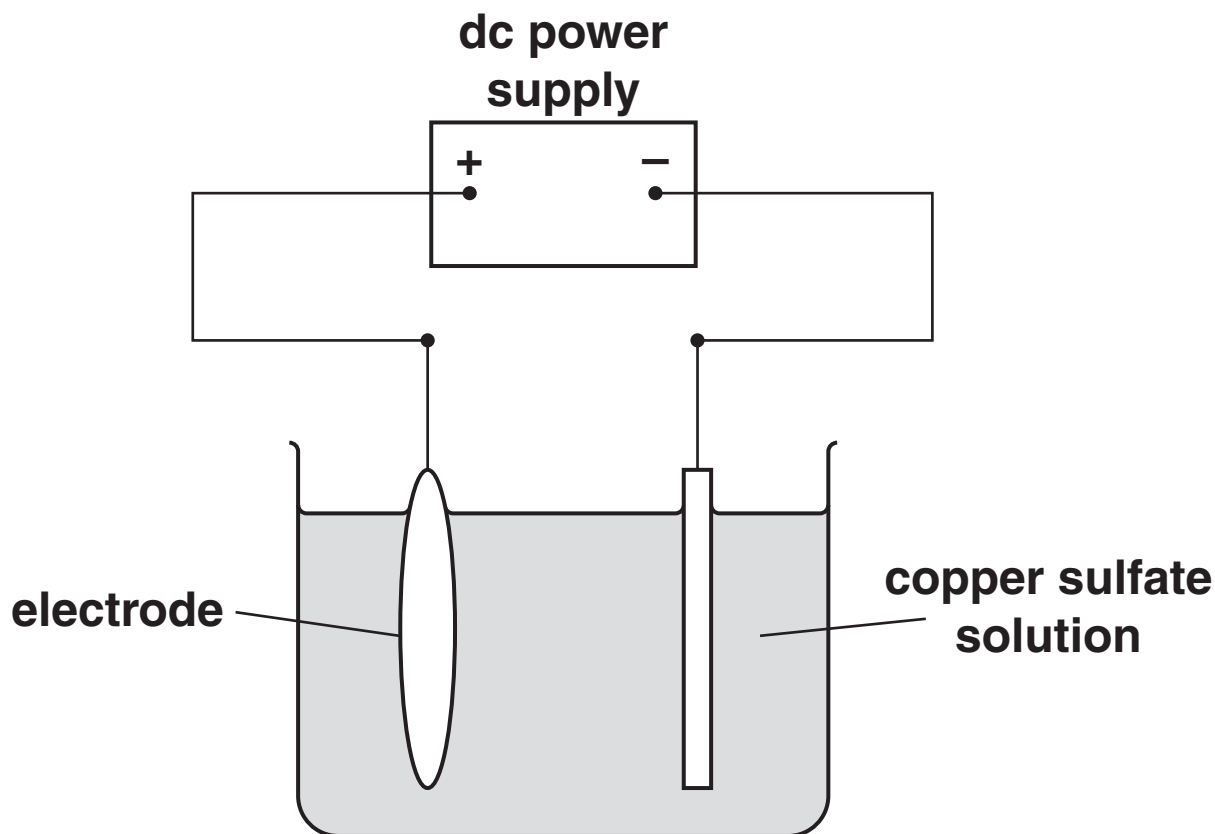
**[Total: 3]**



10 This question is about copper.

Look at the diagram.

It shows the apparatus used to purify copper.



(a) What is the name of the PROCESS used to purify copper?

Use the diagram to help you.

\_\_\_\_\_ [1]

(b) Copper sulfate has the formula  $\text{CuSO}_4$ .

How many ATOMS are shown in this formula?

answer \_\_\_\_\_ [1]

[Total: 2]

**SECTION C – MODULE P2**

**11 This question is about nuclear radiation.**

**(a) Nuclear radiation can be useful.**

**How can nuclear radiation be USEFUL?**

\_\_\_\_\_ [1]

**(b) Using radioactive materials can be harmful to people.**

**(i) Write down ONE harmful effect of radioactivity.**

\_\_\_\_\_ [1]

**(ii) Suggest how people can handle radioactive materials SAFELY.**

\_\_\_\_\_  
\_\_\_\_\_ [1]

**(c) Complete the sentence.**

**The three types of nuclear radiation are alpha,  
\_\_\_\_\_ and gamma. [1]**

**[Total: 4]**

**12 Power stations generate electrical energy.**

**(a) Look at the list of fuels that power stations can use.**

**COAL**

**CRUDE OIL**

**MANURE**

**NATURAL GAS**

**URANIUM**

**WOOD**

**Complete the sentences.**

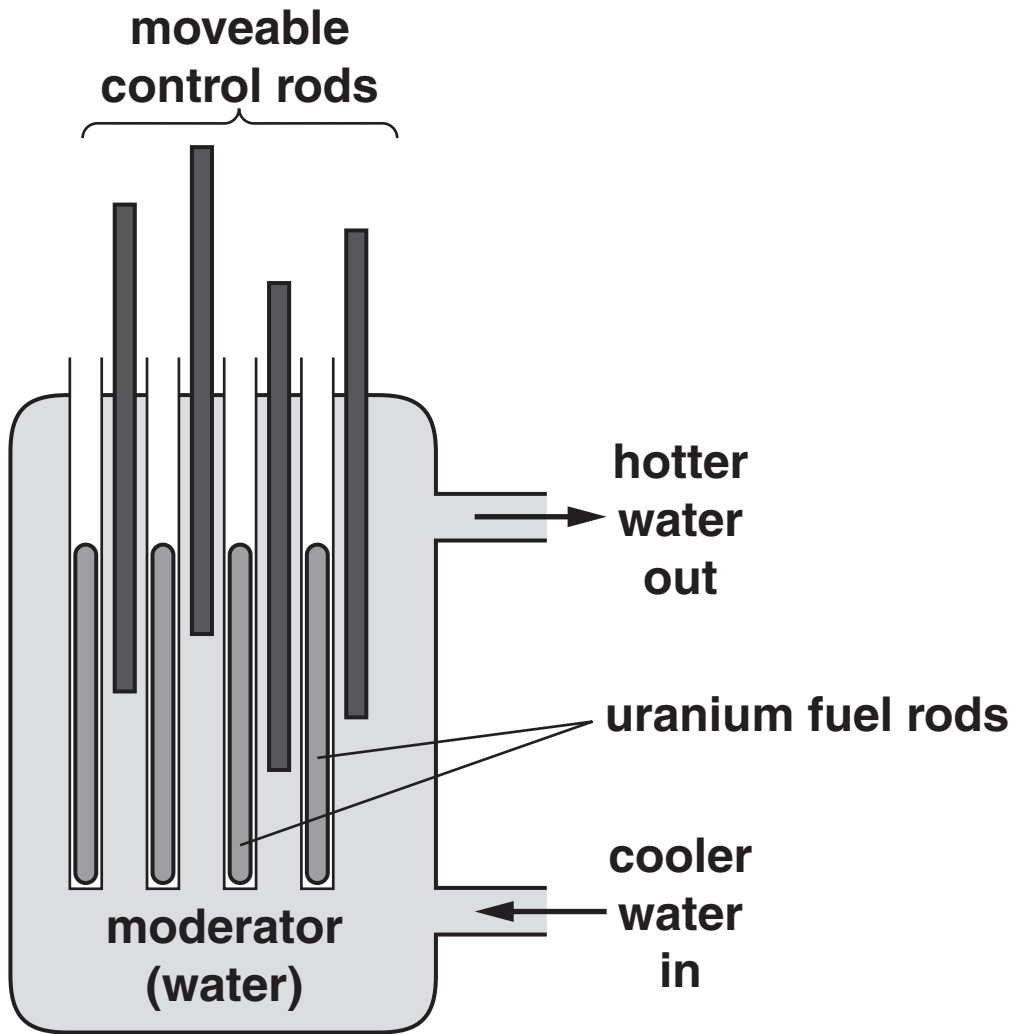
**Each word may be used ONCE, MORE THAN ONCE or NOT AT ALL.**

**(i) FOSSIL FUEL power stations burn three types of fuel. The three fuels burned are natural gas, \_\_\_\_\_ and \_\_\_\_\_ .** [1]

**(ii) RENEWABLE BIOMASS power stations burn \_\_\_\_\_ or \_\_\_\_\_ .** [2]



**(b) Nuclear power stations use fuel rods.**



**Complete the sentences.**

**Fuel rods release energy in the form of**

\_\_\_\_\_ .

**The fuel rods produce a waste material called**

\_\_\_\_\_ .

**[2]**

**[Total: 5]**

13 Look at the information about using some electrical appliances.

APPLIANCE	POWER IN kW	TIME USED IN HOURS
toaster	1.5	0.1
washing machine	3.0	2.0
kettle	2.5	0.2
microwave oven	2.0	0.3

(a) The washing machine is the most expensive to use.

Suggest TWO reasons why.

1 \_\_\_\_\_

2 \_\_\_\_\_ [2]

(b) (i) The kettle is used for 0.2 hours.

Calculate the number of kilowatt hours used by the kettle.

The equations on page 3 may help you.

\_\_\_\_\_  
\_\_\_\_\_

answer \_\_\_\_\_ kWh [1]

**(ii) The cost of one kWh of electricity is 12p.**

**Calculate the cost of using the kettle for  
0.2 hours.**

---

---

**answer \_\_\_\_\_ pence [1]**

**[Total: 4]**

**14 This question is about the Sun.**

**(a) A photocell collects energy from the Sun.**

**Write about photocells.**

**In your answer use ideas about**

- **the type of energy that is absorbed**
- **the type of energy that is produced**
- **an advantage of using photocells.**

---

---

---

---

---

---

---

---

---

---

**[3]**

**(b) The Sun produces SOLAR FLARES.**

**What problem can a solar flare cause?**

---

**[1]**

**(c) The Earth orbits the Sun.**

**What orbits the Earth?**

---

**[1]**

**(d) Stars are different sizes.**

**(i) The Sun is a MEDIUM-WEIGHT star.**

**Near the end of its life it will change into a red giant.**

**What forms NEXT?**

**Choose from the list.**

**BLACK HOLE**

**NEUTRON STAR**

**PLANETARY NEBULA**

**SUPERNOVA**

**answer \_\_\_\_\_ [1]**

- (ii) A HEAVY-WEIGHT star also changes into a red giant near the end of its life.

What happens NEXT?

Choose from the list.

DOES NOT CHANGE

PLANETARY NEBULA

SUPERNOVA

WHITE DWARF

answer \_\_\_\_\_ [1]

[Total: 7]

**END OF QUESTION PAPER**



## **Copyright Information**

**OCR is committed to seeking permission to reproduce all third-party content that it uses in its assessment materials. OCR has attempted to identify and contact all copyright holders whose work is used in this paper. To avoid the issue of disclosure of answer-related information to candidates, all copyright acknowledgements are reproduced in the OCR Copyright Acknowledgements Booklet. This is produced for each series of examinations, is given to all schools that receive assessment material and is freely available to download from our public website ([www.ocr.org.uk](http://www.ocr.org.uk)) after the live examination series.**

**If OCR has unwittingly failed to correctly acknowledge or clear any third-party content in this assessment material, OCR will be happy to correct its mistake at the earliest possible opportunity.**

**For queries or further information please contact the Copyright Team, First Floor, 9 Hills Road, Cambridge CB2 1GE.**

**OCR is part of the Cambridge Assessment Group; Cambridge Assessment is the brand name of University of Cambridge Local Examinations Syndicate (UCLES), which is itself a department of the University of Cambridge.**

