

GENERAL CERTIFICATE OF SECONDARY EDUCATION
GATEWAY SCIENCE
SCIENCE B

Unit 2 Modules B2 C2 P2 (Higher Tier)

FRIDAY 18 JANUARY 2008

Afternoon
Time: 1 hour

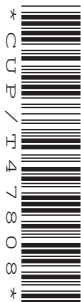
Candidates answer on the question paper.

Additional materials (enclosed):

None

Calculators may be used.

Additional materials: Pencil
Ruler (cm/mm)



Candidate
Forename

Candidate
Surname

Centre
Number

--	--	--	--	--

Candidate
Number

--	--	--	--

INSTRUCTIONS TO CANDIDATES

- Write your name in capital letters, your Centre Number and Candidate Number in the boxes above.
- Use blue or black ink. Pencil may be used for graphs and diagrams only.
- Read each question carefully and make sure that you know what you have to do before starting your answer.
- Answer **all** the questions.
- Do **not** write in the bar codes.
- Do **not** write outside the box bordering each page.
- Write your answer to each question in the space provided.

INFORMATION FOR CANDIDATES

- The number of marks for each question is given in brackets [] at the end of each question or part question.
- The total number of marks for this paper is **60**.
- A list of physics equations is printed on page two.
- The Periodic Table is printed on the back page.

FOR EXAMINER'S USE

Section	Max.	Mark
A	20	
B	20	
C	20	
TOTAL	60	

This document consists of **19** printed pages and **1** blank page.

2

EQUATIONS

$$\text{efficiency} = \frac{\text{useful energy output}}{\text{total energy input}}$$

$$\text{energy} = \text{mass} \times \text{specific heat capacity} \times \text{temperature change}$$

$$\text{energy} = \text{mass} \times \text{specific latent heat}$$

$$\text{fuel energy input} = \text{waste energy output} + \text{electrical energy output}$$

$$\text{power} = \text{voltage} \times \text{current}$$

$$\text{energy supplied} = \text{power} \times \text{time}$$

$$\text{energy (kilowatt hours)} = \text{power (kW)} \times \text{time (h)}$$

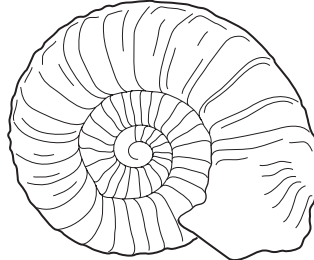
$$\text{wave speed} = \text{frequency} \times \text{wavelength}$$

Answer **all** the questions.

Section A – Module B2

1 Chris is collecting fossils from a cliff.

The fossils are of extinct animals called ammonites.



an ammonite fossil

(a) The fossil only shows the ammonite shell.

Suggest why the rest of the animal did **not** fossilise.

.....[1]

(b) Describe how fossils are formed from shells.

.....
.....[1]

(c) Ammonites are classified as invertebrates.

How are invertebrates different from vertebrates?

.....[1]

(d) In medieval times, people thought that ammonite fossils were snakes that had been turned to stone.

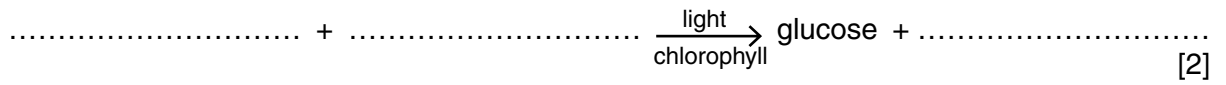
Why have our ideas about fossils changed?

.....
.....[1]

[Total: 4]

2 (a) Plants make food by photosynthesis.

Complete the word equation for photosynthesis.



(b) Plants convert the glucose they make in photosynthesis into starch for storage.

Explain why plants store starch instead of glucose.

.....
.....
..... [2]

(c) Plants also respire.

Explain why they respire.

..... [1]

[Total: 5]

- 3 (a) Iain and Mary want to work out the number of dandelion plants in the school playing field.

They use a quadrat to count the number of dandelion plants in different parts of the playing field.

The table shows their results.

quadrat	number of dandelions
1st	5
2nd	1
3rd	0
4th	2

Each quadrat has an area of 0.25 m^2 .

The total area of the playing field is $20\,000\text{ m}^2$.

Use this information to estimate the total number of dandelion plants in the playing field.

You are advised to show your working.

estimated total number of dandelions = [3]

- (b) Iain and Mary can improve the accuracy of their estimate by using more quadrats.

Explain why this will give a more accurate estimate.

.....

 [1]

[Total: 4]

- 4 (a) A farmer adds nitrate fertiliser to the fields where he grows wheat every year.

He needs to do this to make sure his crop grows well.

However, he does **not** need to add nitrate fertiliser to the fields where he grows leguminous plants, such as beans, every year.

The beans do not get all their nitrates from the soil.

Explain where they get the rest of their nitrates from.

.....
.....
.....[2]

- (b) The farmer gets fewer weeds in his bean fields than in his wheat fields.

Suggest why.

.....
.....[1]

- (c) Bean plants can be pollinated by insects.

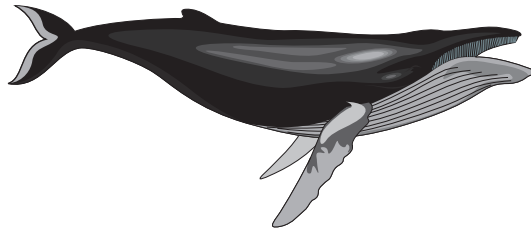
Suggest **one** feature that you would expect to find in bean plants that you would **not** expect to find in plants that are pollinated by the wind.

.....[1]

[Total: 4]

5 Blue whales are an endangered species.

This is because so many have been hunted and killed.



(a) Blue whales were hunted because their bodies had many commercial uses.

Write down **one** commercial use.

.....[1]

(b) Hunting of blue whales is now illegal.

However, scientists are worried there are now **so few** blue whales that they will still become extinct, even if all hunting stops.

Suggest why.

.....
.....
.....[1]

(c) Many people think that hunting of all types of whales should stop.

Why is it difficult to stop all whale hunting?

.....
.....
.....[1]

[Total: 3]

Section B – Module C2

6 Look at the photograph of a car.



© iStockphoto.com/Tomislav Stajduhar.

(a) Many different materials are used to make a car.

Steel is one material. It is used to make car bodies.

Suggest why.

.....[1]

(b) Car bodies can be made from aluminium.

Aluminium is less dense than steel and does not corrode.

Most car bodies are made from steel rather than aluminium.

Suggest why.

.....[1]

(c) One disadvantage of using steel is that it rusts.

Oxygen and water are needed for rusting to happen.

Hydrated iron(III) oxide is made.

What type of reaction is rusting?

Choose from the list.

decomposition

electrolysis

oxidation

reduction

answer[1]

(d) Aluminium does not corrode.

Explain why.

.....

.....[1]

[Total: 4]

7 This question is about the structure of the Earth and igneous rocks.

(a) The surface of the Earth is made up of tectonic plates.

(i) There are two types of tectonic plate.

One type is a continental plate.

Write down the name of the other **type** of plate.

.....[1]

(ii) Tectonic plates can move very slowly.

Explain how this happens. You may wish to draw a diagram.

.....
.....[1]

(b) (i) Igneous rock is made when molten rock cools down.

The crystals in igneous rock can be different sizes.

Describe how the size of the crystals depends on how fast the molten rock cools down.

.....
.....[1]

(ii) When molten rocks in different parts of the Earth cool down, different igneous rocks are made.

Explain why.

.....
.....[1]

[Total: 4]

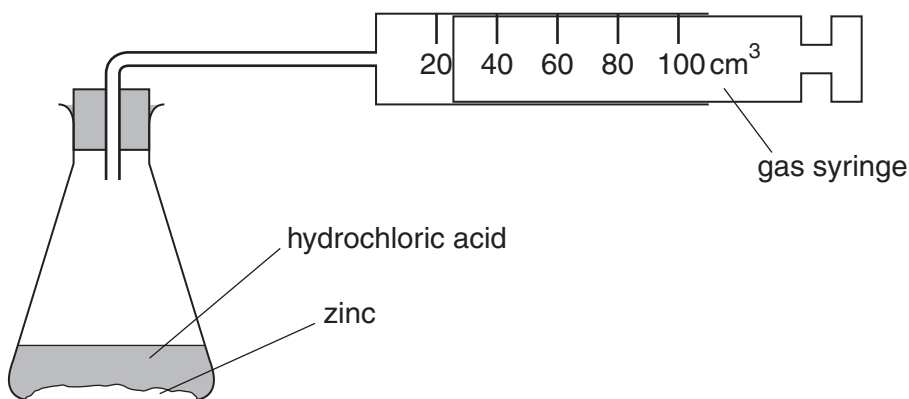
8 Phil and Ann investigate the reaction between zinc and hydrochloric acid.

Zinc chloride and hydrogen are made.

(a) Write the **word** equation for this reaction.

.....[1]

(b) The diagram shows the apparatus they use.



(i) The reaction goes faster if **powdered** zinc is used instead of zinc **lumps**.

Explain why.

Use ideas about collisions between particles.

.....

[2]

(ii) The reaction goes faster if a more **concentrated** solution of hydrochloric acid is used.

Explain why.

Use ideas about collisions between particles.

.....

[2]

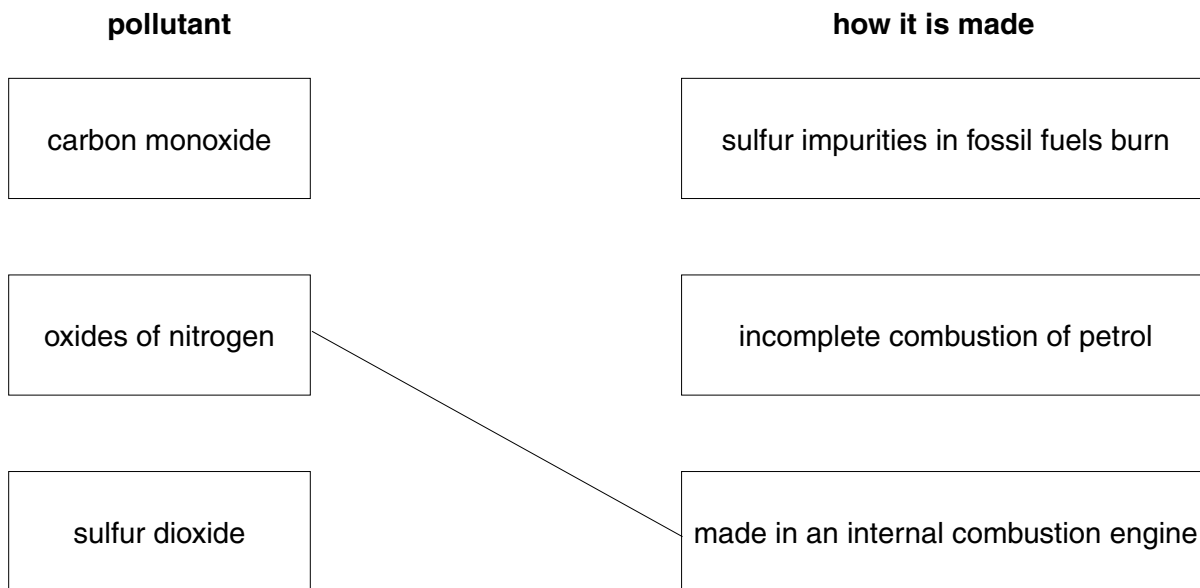
[Total: 5]

9 This question is about pollutants found in the air.

(a) Link each **pollutant** to **how it is made**.

Draw two straight lines.

One has been done for you.



[1]

(b) Carbon monoxide is removed from car exhaust fumes using a catalytic converter.

Carbon dioxide is made.

Why is it important to remove carbon monoxide from car exhaust fumes?

.....[1]

(c) In a catalytic converter carbon monoxide, CO, reacts with nitric oxide, NO.

Nitrogen, N₂, and carbon dioxide are made.

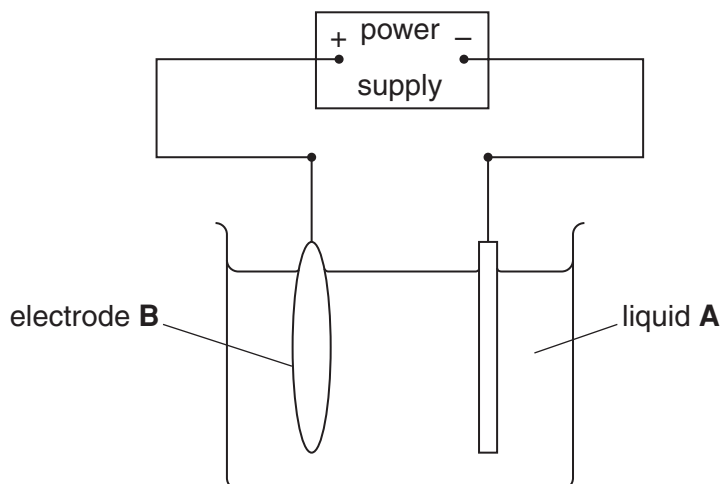
Write a balanced **symbol** equation for this reaction.

.....[2]

[Total: 4]

10 This question is about copper.

(a) Look at the diagram. It shows the apparatus needed to purify impure copper.



(i) Write down the name of liquid A.

Choose from the list.

copper sulfate solution

paraffin

dilute sulfuric acid

water

answer.....[1]

(ii) Write down the name of electrode B.

Choose from the list.

impure copper anode

impure copper cathode

pure copper anode

pure copper cathode

answer.....[1]

(b) Copper is used to make brass.

Brass is an alloy.

Write down the name of the metal which is mixed with copper to make brass.

.....[1]

[Total: 3]

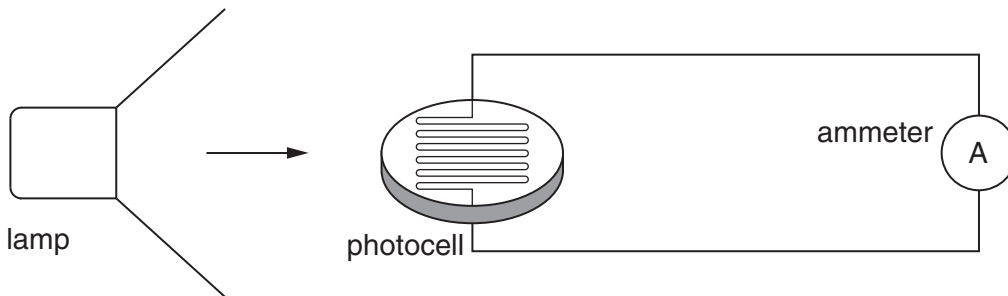
[Turn over

Section C – Module P2

11 This question is about photocells.

Olivia investigates photocells.

Look at the diagram.



(a) Olivia shines light from the lamp onto a photocell.

The ammeter shows that a current is flowing.

It is a **direct** current (dc).

Describe how a current is made in the photocell.

In your answer use ideas about

- what is meant by direct current
- energy
- electrons.

.....

.....

.....

.....[3]

(b) Olivia adds a **voltmeter** to the circuit to measure the voltage across the photocell.

Here are her results.

ammeter reading = 0.1 A

voltmeter reading = 2.5V

Calculate the power output of the photocell.

The equations on page 2 may help you.

.....
.....
.....

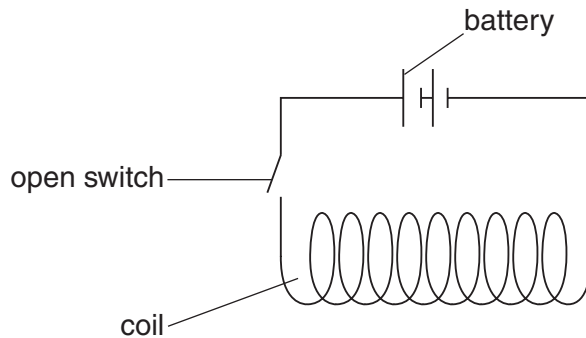
answer units [3]

[Total: 6]

12 This question is about magnetism and generating electric currents.

(a) Sathvir makes a coil of wire and connects it to a battery.

Look at the diagram.



Sathvir closes the switch. A current flows through the coil.

This creates a magnetic field around the coil.

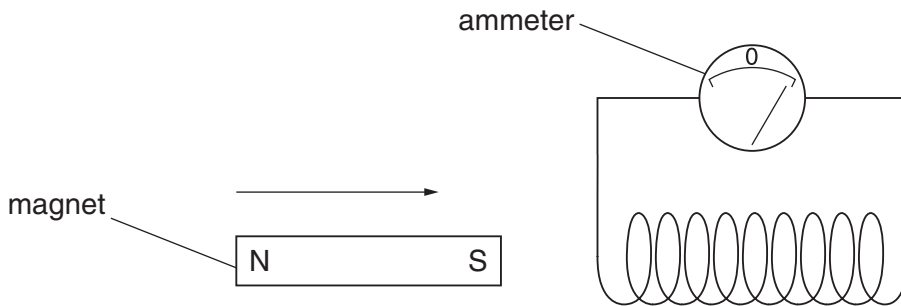
What causes a magnetic field to be produced when the **current flows**?

.....

.....

.....[2]

(b) Sathvir replaces the battery with an ammeter.



He then moves a magnet towards the coil.

A current flows in the coil. The ammeter shows a reading.

How could Sathvir make a **bigger** current flow in the coil?

Describe **two** things he could change to make a bigger current flow.

.....

.....

.....[2]

[Total: 4]

17
BLANK PAGE

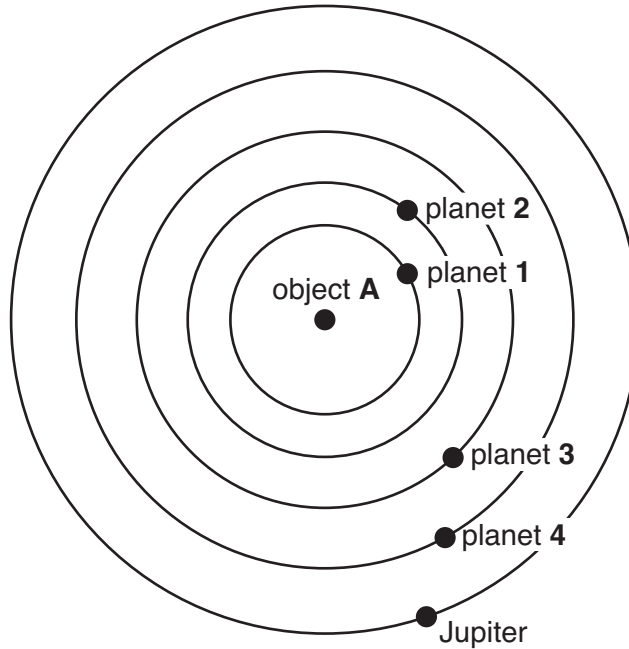
PLEASE DO NOT WRITE ON THIS PAGE

Question 13 starts on page 18.

13 This question is about objects in our Solar System.

Look at the diagram.

It shows **some** of the planets in our Solar System.



(a) The **asteroid belt** is between Jupiter and planet 4.

What is the name of planet 4?

.....[1]

(b) Asteroids are rocks. They have never formed into another planet.

Complete the following sentences about asteroids.

Asteroids are left over from the formation of the

The large force of Jupiter stops them forming into a planet.

[2]

(c) Planets and asteroids orbit the Sun.

Comets also orbit the Sun. The shape of a comet's orbit is highly **elliptical**.

The speed of the comet changes in its orbit.

Explain how the speed changes and why.

.....
.....
.....[2]

(d) Object **A** is the Sun. It is a **medium-weight** star.

Billions of years in the future the Sun will die.

Here are some of the **stages** of the death of a medium-weight star.

They are **not** in the correct **order**.

(i) Draw a straight line from each numbered box to the correct stage. Two have been done for you.

order	stage
1	outer layers form a planetary nebula
2	star expands
3	white dwarf formed
4	star runs out of hydrogen
5	red giant formed
6	core cools and shrinks

[3]

(ii) When the Sun runs out of hydrogen, the process that produced the Sun's energy will stop.

What is the name of this process?

.....[1]

(iii) Not all stars die in this way.

What does the end of a star depend on?

.....[1]

[Total: 10]

END OF QUESTION PAPER

Copyright Acknowledgements:

Q6 photo © iStockphoto.com/Tomislav Stajduhar.

Permission to reproduce items where third-party owned material protected by copyright is included has been sought and cleared where possible. Every reasonable effort has been made by the publisher (OCR) to trace copyright holders, but if any items requiring clearance have unwittingly been included, the publisher will be pleased to make amends at the earliest possible opportunity.

OCR is part of the Cambridge Assessment Group. Cambridge Assessment is the brand name of University of Cambridge Local Examinations Syndicate (UCLES), which is itself a department of the University of Cambridge.

The Periodic Table of the Elements

		Key			relative atomic mass			atomic symbol			atomic (proton) number			atomic (proton) number			atomic (proton) number																																																																																																																																																																																																																																																																																																																																																																																																																																																																																																																																																																																																																																																																																																																																																																																																																																																																																																																																																																																																																
1	2	7	9	11	12	13	14	15	16	17	18	19	20	21	22	23	24	25	26	27	28	29	30	31	32	33	34	35	36	37	38	39	40	41	42	43	44	45	46	47	48	49	50	51	52	53	54	55	56	57	58	59	60	61	62	63	64	65	66	67	68	69	70	71	72	73	74	75	76	77	78	79	80	81	82	83	84	85	86	87	88	89	90	91	92	93	94	95	96	97	98	99	100	101	102	103	104	105	106	107	108	109	110	111	112	113	114	115	116	117	118	119	120	121	122	123	124	125	126	127	128	129	130	131	132	133	134	135	136	137	138	139	140	141	142	143	144	145	146	147	148	149	150	151	152	153	154	155	156	157	158	159	160	161	162	163	164	165	166	167	168	169	170	171	172	173	174	175	176	177	178	179	180	181	182	183	184	185	186	187	188	189	190	191	192	193	194	195	196	197	198	199	200	201	202	203	204	205	206	207	208	209	210	211	212	213	214	215	216	217	218	219	220	221	222	223	224	225	226	227	228	229	230	231	232	233	234	235	236	237	238	239	240	241	242	243	244	245	246	247	248	249	250	251	252	253	254	255	256	257	258	259	260	261	262	263	264	265	266	267	268	269	270	271	272	273	274	275	276	277	278	279	280	281	282	283	284	285	286	287	288	289	290	291	292	293	294	295	296	297	298	299	300	301	302	303	304	305	306	307	308	309	310	311	312	313	314	315	316	317	318	319	320	321	322	323	324	325	326	327	328	329	330	331	332	333	334	335	336	337	338	339	340	341	342	343	344	345	346	347	348	349	350	351	352	353	354	355	356	357	358	359	360	361	362	363	364	365	366	367	368	369	370	371	372	373	374	375	376	377	378	379	380	381	382	383	384	385	386	387	388	389	390	391	392	393	394	395	396	397	398	399	400	401	402	403	404	405	406	407	408	409	410	411	412	413	414	415	416	417	418	419	420	421	422	423	424	425	426	427	428	429	430	431	432	433	434	435	436	437	438	439	440	441	442	443	444	445	446	447	448	449	450	451	452	453	454	455	456	457	458	459	460	461	462	463	464	465	466	467	468	469	470	471	472	473	474	475	476	477	478	479	480	481	482	483	484	485	486	487	488	489	490	491	492	493	494	495	496	497	498	499	500	501	502	503	504	505	506	507	508	509	510	511	512	513	514	515	516	517	518	519	520	521	522	523	524	525	526	527	528	529	530	531	532	533	534	535	536	537	538	539	540	541	542	543	544	545	546	547	548	549	550	551	552	553	554	555	556	557	558	559	560	561	562	563	564	565	566	567	568	569	570	571	572	573	574	575	576	577	578	579	580	581	582	583	584	585	586	587	588	589	590	591	592	593	594	595	596	597	598	599	600	601	602	603	604	605	606	607	608	609	610	611	612	613	614	615	616	617	618	619	620	621	622	623	624	625	626	627	628	629	630	631	632	633	634	635	636	637	638	639	640	641	642	643	644	645	646	647	648	649	650	651	652	653	654	655	656	657	658	659	660	661	662	663	664	665	666	667	668	669	670	671	672	673	674	675	676	677	678	679	680	681	682	683	684	685	686	687	688	689	690	691	692	693	694	695	696	697	698	699	700	701	702	703	704	705	706	707	708	709	710	711	712	713	714	715	716	717	718	719	720	721	722	723	724	725	726	727	728	729	730	731	732	733	734	735	736	737	738	739	740	741	742	743	744	745	746	747	748	749	750	751	752	753	754	755	756	757	758	759	760	761	762	763	764	765	766	767	768	769	770	771	772	773	774	775	776	777	778	779	780	781	782	783	784	785	786	787	788	789	790	791	792	793	794	795	796	797	798	799	800	801	802	803	804	805	806	807	808	809	810	811	812	813	814	815	816	817	818	819	820	821	822	823	824	825	826	827	828	829	830	831	832	833	834	835	836	837	838	839	840	841	842	843	844	845	846	847	848	849	850	851	852	853	854	855	856	857	858	859	860	861	862	863	864	865	866	867	868	869	870	871	872	873	874	875	876	877	878	879	880	881	882	883	884	885	886	887	888	889	890	891	892	893	894	895	896	897	898	899	900	901	902	903	904	905	906	907	908	909	910	911	912	913	914	915	916	917	918	919	920	921	922	923	924	925	926	927	928	929	930	931	932	933	934	935	936	937	938	939	940	941	942	943	944	945	946	947	948	949	950	951	952	953	954	955	956	957	958	959	960	961	962	963	964	965	966	967	968	969	970	971	972	973	974	975	976	977	978	979	980	981	982	983	984	985	986	987	988	989	990	991	992	993	994	995	996	997	998	999	1000

* The lanthanoids (atomic numbers 58-71) and the actinoids (atomic numbers 90-103) have been omitted.

The relative atomic masses of copper and chlorine have not been rounded to the nearest whole number