

GENERAL CERTIFICATE OF SECONDARY EDUCATION

TWENTY FIRST CENTURY SCIENCE

A325/02

ADDITIONAL APPLIED SCIENCE A

Scientific Detection (Higher Tier)

Wednesday 19 January 2011
Morning

Duration: 45 minutes

Candidates answer on the question paper.
A calculator may be used for this paper.

OCR supplied materials:
None

Other materials required:

- Pencil
- Ruler (cm/mm)



Candidate forename		Candidate surname	
-----------------------	--	----------------------	--

Centre number						Candidate number				
---------------	--	--	--	--	--	------------------	--	--	--	--

INSTRUCTIONS TO CANDIDATES

- Write your name, centre number and candidate number in the boxes above. Please write clearly and in capital letters.
- Use black ink. Pencil may be used for graphs and diagrams only.
- Read each question carefully. Make sure you know what you have to do before starting your answer.
- Write your answer to each question in the space provided. Additional paper may be used if necessary but you must clearly show your candidate number, centre number and question number(s).
- Answer **all** the questions.
- Do **not** write in the bar codes.

INFORMATION FOR CANDIDATES

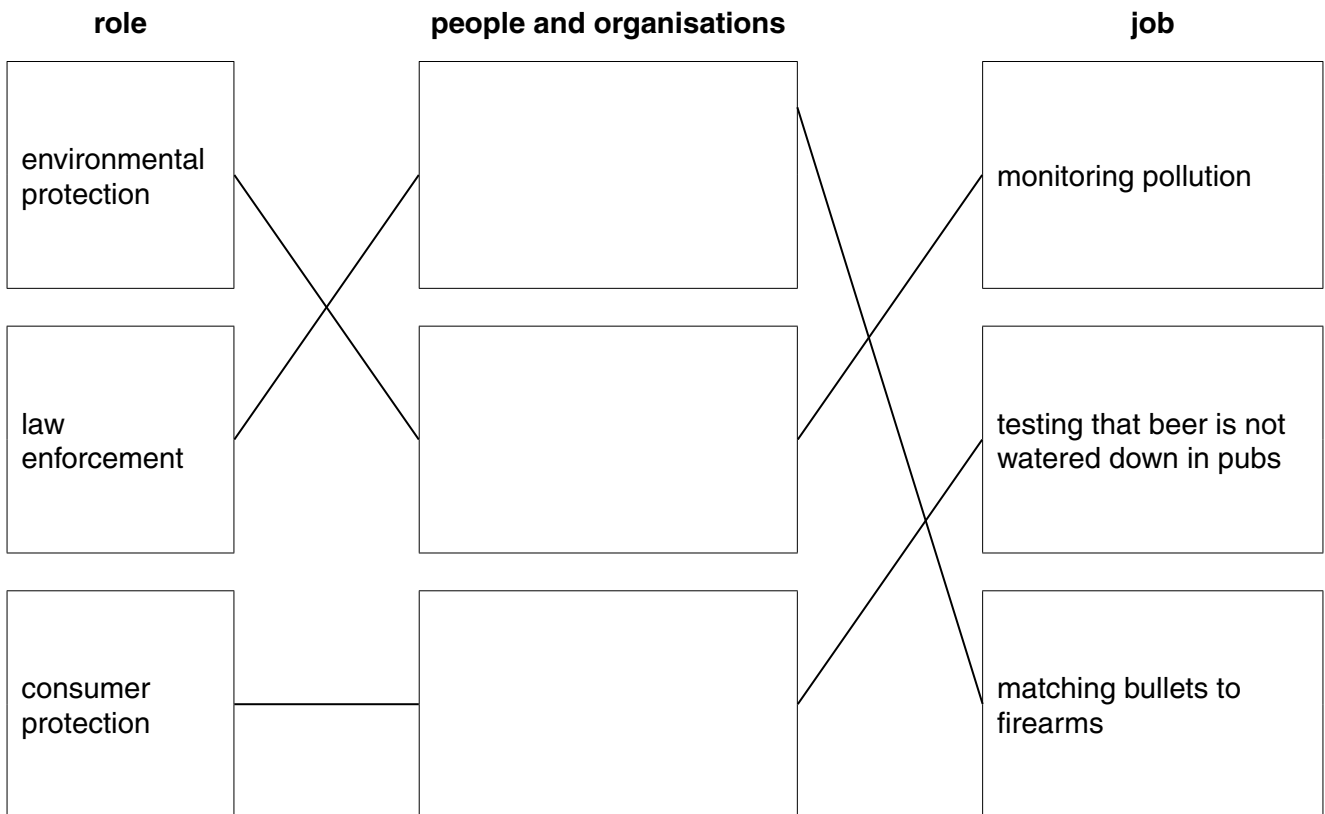
- The number of marks is given in brackets [] at the end of each question or part question.
- The total number of marks for this paper is **36**.
- This document consists of **12** pages. Any blank pages are indicated.

Answer **all** the questions.

1 Scientific detectives investigate a wide range of problems.

(a) Straight lines have been drawn to link the **people and organisations** with their **correct role** and their **job**.

Complete the **three** boxes for the **people and organisations**.



[2]

(b) Public laboratories have a system of accreditation to ensure good practice.

(i) Which of these statements explains why accreditation is important?

Put a tick (✓) in the box next to the correct answer.

ensures reliability

increases sales

monitors ordering

reduces waste

[1]

3

(ii) Which of the following is increased by using a system of common practice and procedures?

Put a tick (✓) in the box next to the **best** answer.

profit

speed of production

staff promotion

reliability

[1]

(iii) Why do scientists carry out proficiency tests?

Put a tick (✓) in the box next to the **best** answer.

to act as an incentive to work harder

to check the quality of their work

to get extra qualifications

to check the equipment is working properly

[1]

[Total: 5]

2 The picture shows the scene of a road traffic accident.

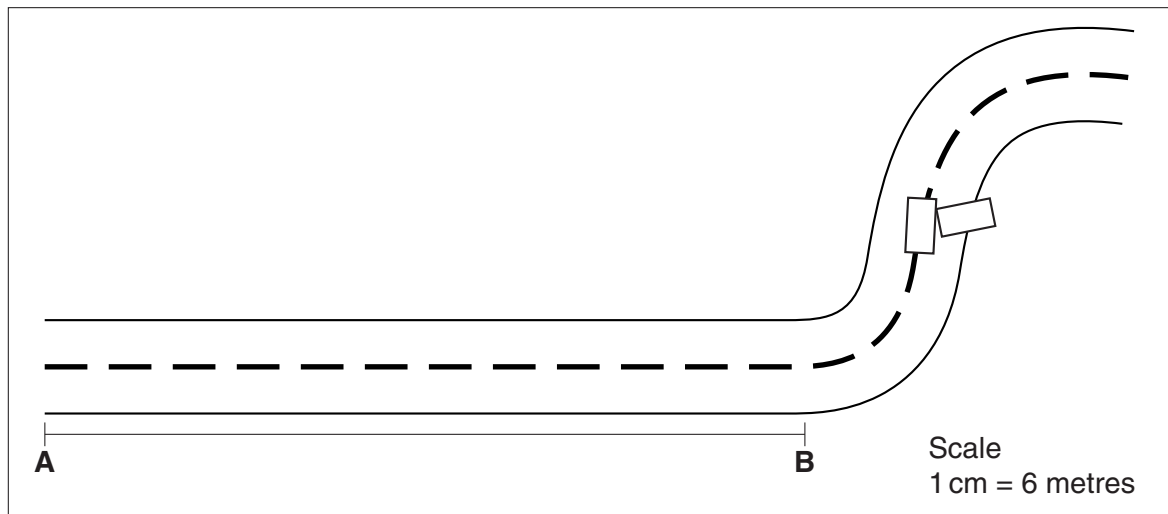


(a) Which three features **visible in the image** are important to record?

- 1
- 2
- 3 [3]

(b) A section of the road was damaged by the accident.

A traffic engineer drew a sketch of the damaged section.



- (i) Use a ruler to calculate the length of the damaged section between point **A** and point **B**.
Show your working.

answer = metres [2]

- (ii) A different stretch of the road was 200m long and 9m wide.
Calculate the surface area of this stretch of road.
Show your working.

answer = m² [2]

- (iii) The calculated **area** of the damaged section has a greater uncertainty than the measured **length** and **width** of the damaged section.

Explain why.

.....
.....
.....
..... [2]

[Total: 9]

3 A sample of blood was taken from a crime scene.

A forensic scientist examined the sample using a microscope.

(a) The scientist first used a standard procedure to prepare a temporary microscope slide of the sample.

There were three steps in the standard procedure.

Use these words to help you describe the three steps in the order they are carried out.

blood sample slide staining reagent cover slip

step 1

.....

step 2

.....

step 3

..... [3]

(b) The scientist wants to calculate the magnifying power of the microscope. He knows the magnification of each lens.

Explain how the scientist would do this.

.....

..... [2]

[Total: 5]

- 4 Forensic scientists analyse the purity of a sample of heroin.



- (a) They determine the purity is $99.1 \pm 0.2\%$.

Which two values does the actual purity of the drug lie between?

..... % and % [2]

- (b) Scientists give indications of the limits of accuracy of their results (e.g. $\pm 0.2\%$) to allow for uncertainty due to random or systematic errors.

Explain what is meant by each of the terms **systematic error** and **random error**.

systematic error

.....

random error

..... [2]

[Total: 4]

5 There are different types of chromatography.

(a) Which **two** of the following best describe the advantages of gas chromatography over paper chromatography?

Put ticks (✓) in the boxes next to the two best answers.

It shows the results in different colours.

It has greater separating power than paper chromatography.

It can produce quantitative results.

It is easier to use than paper chromatography.

The equipment is cheaper than for paper chromatography.

[2]

(b) State **two** differences between paper chromatography and gas chromatography.

.....
.....
..... [2]

[Total: 4]

BLANK PAGE

Question 6 begins on page 10.

PLEASE DO NOT WRITE ON THIS PAGE

6 Scientists use colour in analysis.

(a) Give one example in each case of a colour test which is...

...qualitative.

...semi quantitative.

...quantitative. [3]

(b) This data was collected using a colorimeter.

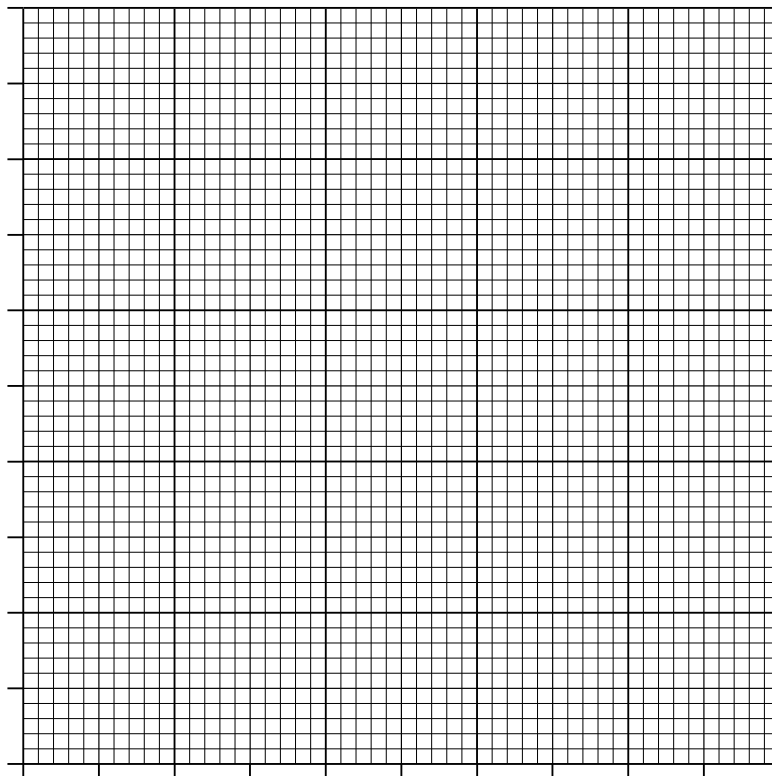
It gives the **absorbance** of a solution of a coloured substance at different **concentrations**.

concentration g/dm ³	absorbance
0.08	0.10
0.22	0.28
0.38	0.48
0.52	0.66
0.68	0.80
0.72	0.92

(i) Use the data to plot a calibration graph on the grid provided.

Fully label the axes.

[4]



(ii) Draw the line of best fit and put a **ring** around the result that appears to be the least reliable (outlier). [1]

(iii) An unknown concentration of the substance has an absorbance of 0.95.

Use the graph to find the concentration of the coloured substance in this solution.

Include the unit in your answer.

concentration = [1]

[Total: 9]

END OF QUESTION PAPER

PLEASE DO NOT WRITE ON THIS PAGE



Copyright Information

OCR is committed to seeking permission to reproduce all third-party content that it uses in its assessment materials. OCR has attempted to identify and contact all copyright holders whose work is used in this paper. To avoid the issue of disclosure of answer-related information to candidates, all copyright acknowledgements are reproduced in the OCR Copyright Acknowledgements Booklet. This is produced for each series of examinations and is freely available to download from our public website (www.ocr.org.uk) after the live examination series.

If OCR has unwittingly failed to correctly acknowledge or clear any third-party content in this assessment material, OCR will be happy to correct its mistake at the earliest possible opportunity.

For queries or further information please contact the Copyright Team, First Floor, 9 Hills Road, Cambridge CB2 1GE.

OCR is part of the Cambridge Assessment Group; Cambridge Assessment is the brand name of University of Cambridge Local Examinations Syndicate (UCLES), which is itself a department of the University of Cambridge.