

<b>Candidate Forename</b>		<b>Candidate Surname</b>	
-------------------------------	--	------------------------------	--

<b>Centre Number</b>						<b>Candidate Number</b>				
--------------------------	--	--	--	--	--	-----------------------------	--	--	--	--

**OXFORD CAMBRIDGE AND RSA EXAMINATIONS  
GENERAL CERTIFICATE OF SECONDARY EDUCATION**

**A336/02**

**TWENTY FIRST CENTURY SCIENCE  
ADDITIONAL APPLIED SCIENCE A**

**Materials and Performance (Higher Tier)**

**WEDNESDAY 27 JANUARY 2010: Afternoon**

**DURATION: 45 minutes**

**SUITABLE FOR VISUALLY IMPAIRED CANDIDATES**

**Candidates answer on the Question Paper  
A calculator may be used for this paper**

**OCR SUPPLIED MATERIALS:**

**None**

**OTHER MATERIALS REQUIRED:**

**Pencil**

**Ruler (cm/mm)**

**READ INSTRUCTIONS OVERLEAF**

## **INSTRUCTIONS TO CANDIDATES**

- **Write your name clearly in capital letters, your Centre Number and Candidate Number in the boxes on the first page.**
- **Use black ink. Pencil may be used for graphs and diagrams only.**
- **Read each question carefully and make sure that you know what you have to do before starting your answer.**
- **Answer ALL the questions.**
- **Write your answer to each question in the space provided, however additional paper may be used if necessary.**

## **INFORMATION FOR CANDIDATES**

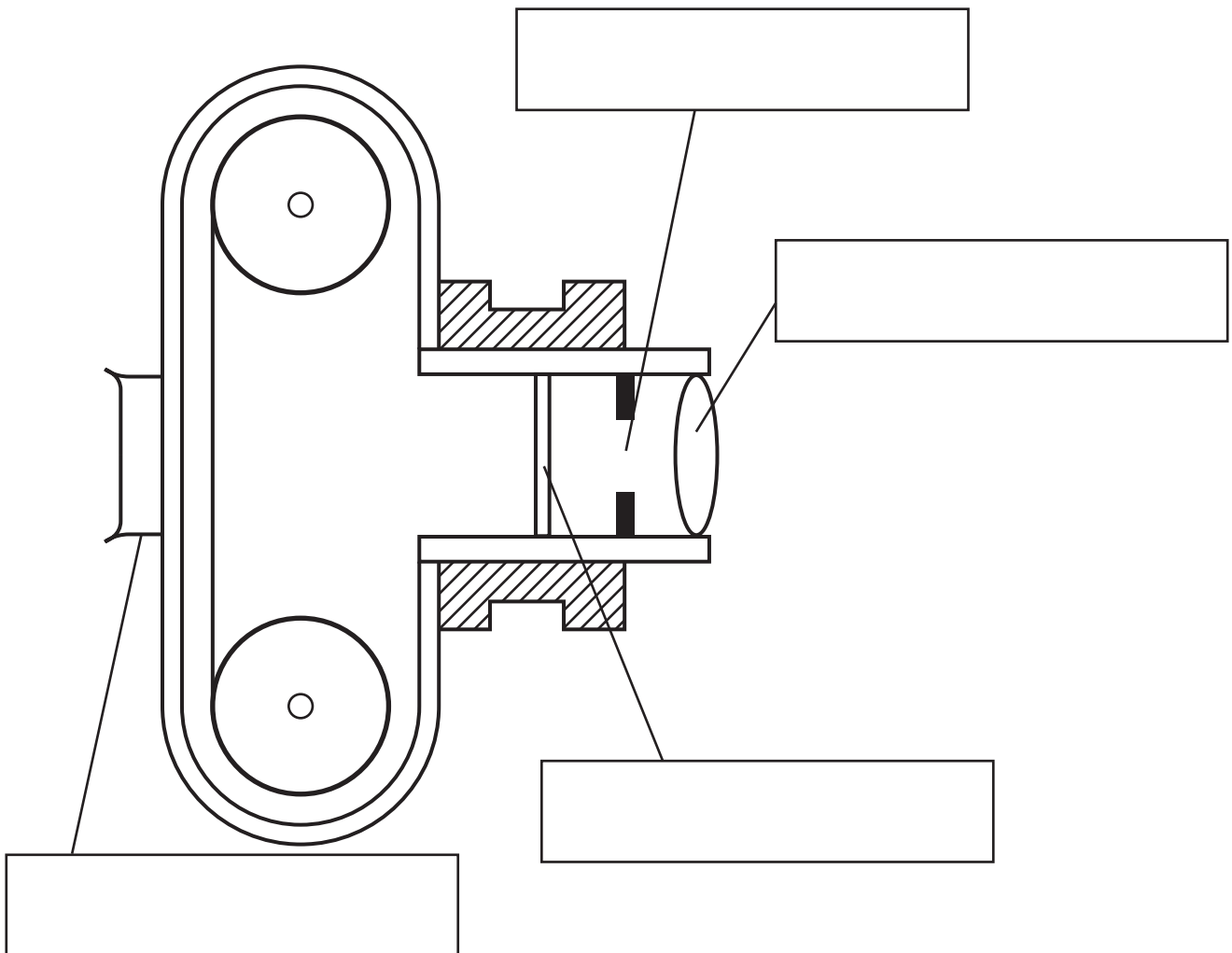
- **The number of marks is given in brackets [ ] at the end of each question or part question.**
- **The total number of marks for this paper is 36.**

Answer ALL the questions.

1 Robert is a cameraman.

(a) This diagram shows Robert's camera.

Label the LENS, SHUTTER, APERTURE, and VIEWFINDER.



[4]

- (b) (i) Robert explains how the camera lens produces an image.

Complete these sentences. Choose words from this list.

CIRCLE    ECLIPSE    FOCUS    IMAGE    INVERTED  
LINE    OBJECT    REAL    REFLECTED  
UPRIGHT    VIRTUAL

‘Parallel rays of light from a distant object are brought to a \_\_\_\_\_ on the film.

This makes an \_\_\_\_\_ which is smaller than the object. It is

\_\_\_\_\_ and \_\_\_\_\_ [4]

- (ii) The material of the lens makes the light rays change direction.

Give the name of this effect.

answer \_\_\_\_\_ [1]

- (iii) The surface of the lens has a coating.

Describe the purpose of this coating.

\_\_\_\_\_  
\_\_\_\_\_ [1]

[Total: 10]

**2 Stefan is a science teacher. He wants his class to compare the expansion of some metal bars.**

**(a) He first estimates how much a steel bar will expand.**

**The bar is 1.5 m long and Stefan expects its temperature to rise by 400 °C.**

**The expansion index of mild steel is 15.**

**Use the formula below to predict the expansion of the bar.**

**Show your working.**

$$\text{EXPANSION (mm) = } \frac{\text{LENGTH OF BAR (m)} \times \text{TEMPERATURE RISE (}^\circ\text{C)} \times \text{EXPANSION INDEX}}{1000}$$

**expansion = \_\_\_\_\_ mm [2]**

**(b) Stefan carries out the same experiment with different metals.**

**He gets these results.**

	<b>EXPANSION OF METAL BAR IN MM</b>		
<b>METAL</b>	<b>TEST 1</b>	<b>TEST 2</b>	<b>TEST 3</b>
<b>aluminium</b>	<b>10</b>	<b>20</b>	<b>12</b>
<b>iron</b>	<b>6.0</b>	<b>7.0</b>	<b>6.5</b>
<b>copper</b>	<b>9.0</b>	<b>10</b>	<b>10</b>
<b>steel</b>	<b>8.0</b>	<b>9.0</b>	<b>10</b>

**(i) The students notice an outlier in the data.**

**Put a ring around the outlier.**

**[1]**

(ii) Stefan asks his students to write down the metals in order of expansion.

Use the data in the table to write down the metals in order of expansion.

Start with the highest expansion.

HIGHEST EXPANSION



LOWEST EXPANSION

[1]

**BLANK PAGE**



(iii) Four students are unsure about the correct order of metals for expansion. They say what they think makes the order unreliable.

**Bess**  
There were three tests for each metal.



**Aled**  
The data ranges overlap.

**Carlos**  
There is an outlier in the data.



**Davina**  
Steel is an alloy.

Which student has the correct reason for

being unsure? \_\_\_\_\_ [1]

[Total: 5]

### 3 Read this passage.

A factory makes drink cans.

An alloy of aluminium is used. The alloy is made by adding manganese and magnesium to the aluminium to make it stronger and more ductile.

The alloy reaches the factory in sheets. Each sheet is pressed to make discs. Each disc is formed into a shallow cup, then rammed through a tungsten carbide ring to make a hollow cylinder.

Answer these questions, using information in the passage.

- (a) The metal used to make drink cans is an alloy. What is an alloy?

\_\_\_\_\_ [1]

- (b) Give TWO reasons for using aluminium ALLOY instead of pure aluminium. Use information from the passage.

1 \_\_\_\_\_

2 \_\_\_\_\_ [1]

- (c) Describe what 'ductile' means.

\_\_\_\_\_ [1]

**(d) The shape of the alloy is changed several times.**

**Four shapes are formed in the process of making a can.**

**Write them down in the correct order.**

**1** \_\_\_\_\_

**2** \_\_\_\_\_

**3** \_\_\_\_\_

**4** \_\_\_\_\_ **[2]**

**[Total: 5]**

**4 Electrical power cables include wires made of a combination of aluminium and steel.**

**(a) Miriam is studying electrical conductance.**

- (i) Describe how she could measure the ELECTRICAL CONDUCTANCE of a cable. Use a circuit diagram to show how to connect the components. Include an ammeter and a voltmeter in your circuit. Label the components and the sample to be tested.**

---

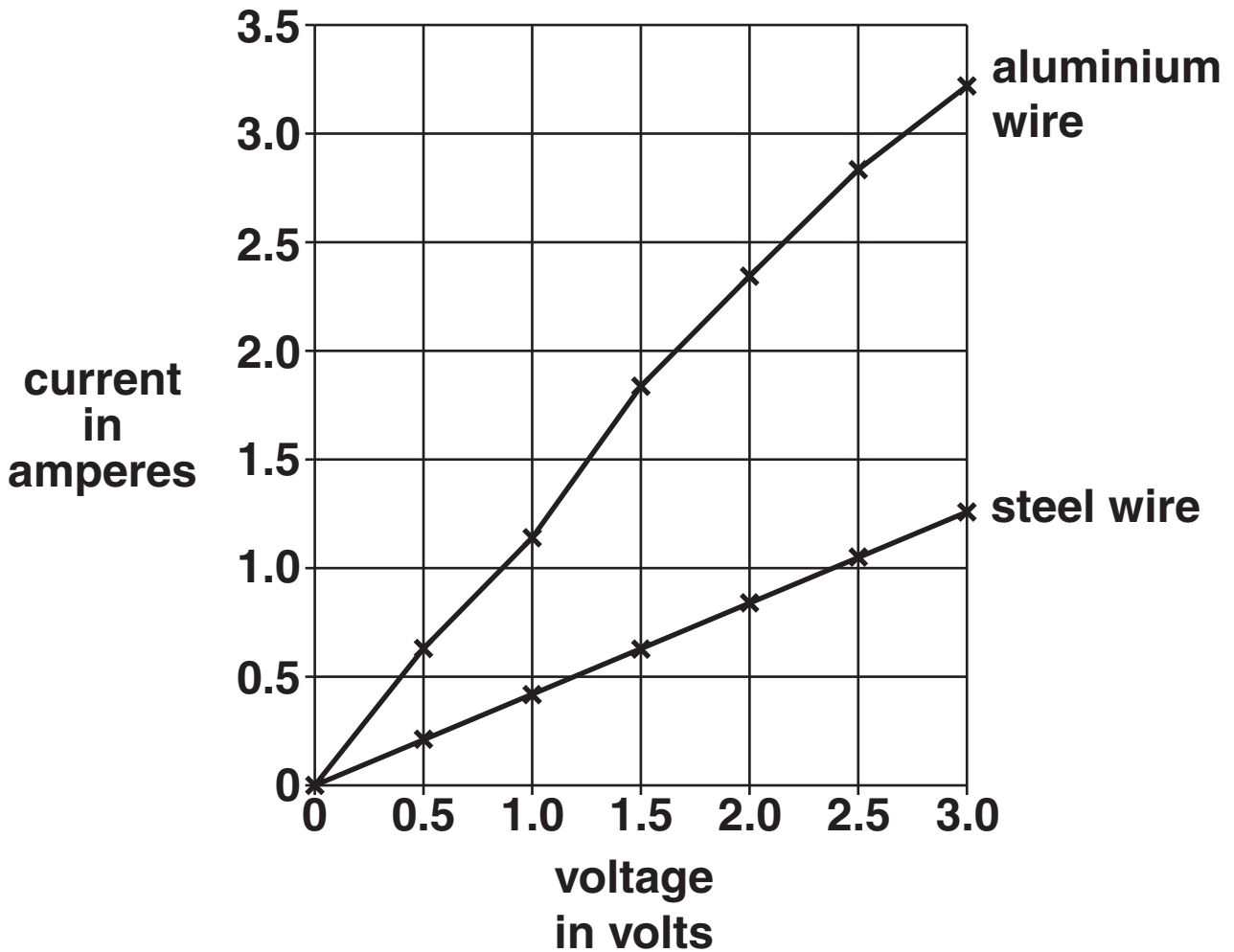
---

---

**[3]**

Miriam has test results for steel and aluminium wires.

The graph shows her results.



- (ii) Use Miriam's results to calculate the conductance of the STEEL wire. Show your working.

$$G = I/V$$

conductance of steel wire = \_\_\_\_\_ S [2]

**(iii) Miriam looks at the graph.**

**What TWO things can she say about the conductance of aluminium compared with the conductance of steel?**

---

---

**[1]**

**(b) (i) Aluminium is used for power cables because it has low density and high electrical conductance.**

**Give ANOTHER example of a material which by itself has a combination of properties that make it suitable for a particular purpose.**

**Your answer should include the reason each property is needed.**

---

---

---

---

**[2]**

- (ii) Power cables include strands of steel to improve their tensile strength.  
The aluminium strands have low density so the cables can be supported overhead.  
The MECHANICAL PROPERTIES of steel and aluminium are COMPLEMENTARY.

Give ANOTHER example where materials with complementary properties are needed.  
Your answer should clearly state:

- the properties needed for a particular purpose
- the property of each material which is useful for this purpose.

---

---

---

---

---

[3]

[Total: 11]

**5 Paul is a fleet manager for company cars. Impact sensors are fitted to the cars. One car hits a tree and stops. The driver returns the car to Paul. In the collision, the car's impact sensor shows that the collision took 0.12 seconds and that the average force was 140 000 N. Paul wonders if the driver was speeding. He calculates the speed of the car before the collision.**

**(a) (i) Calculate the speed of the car.**

**Use this formula.**

$$Ft = m (v-u)$$

**The mass of the car and driver is 1080 kg.**

**Show your working.**

**speed of car = \_\_\_\_\_ m/s [3]**

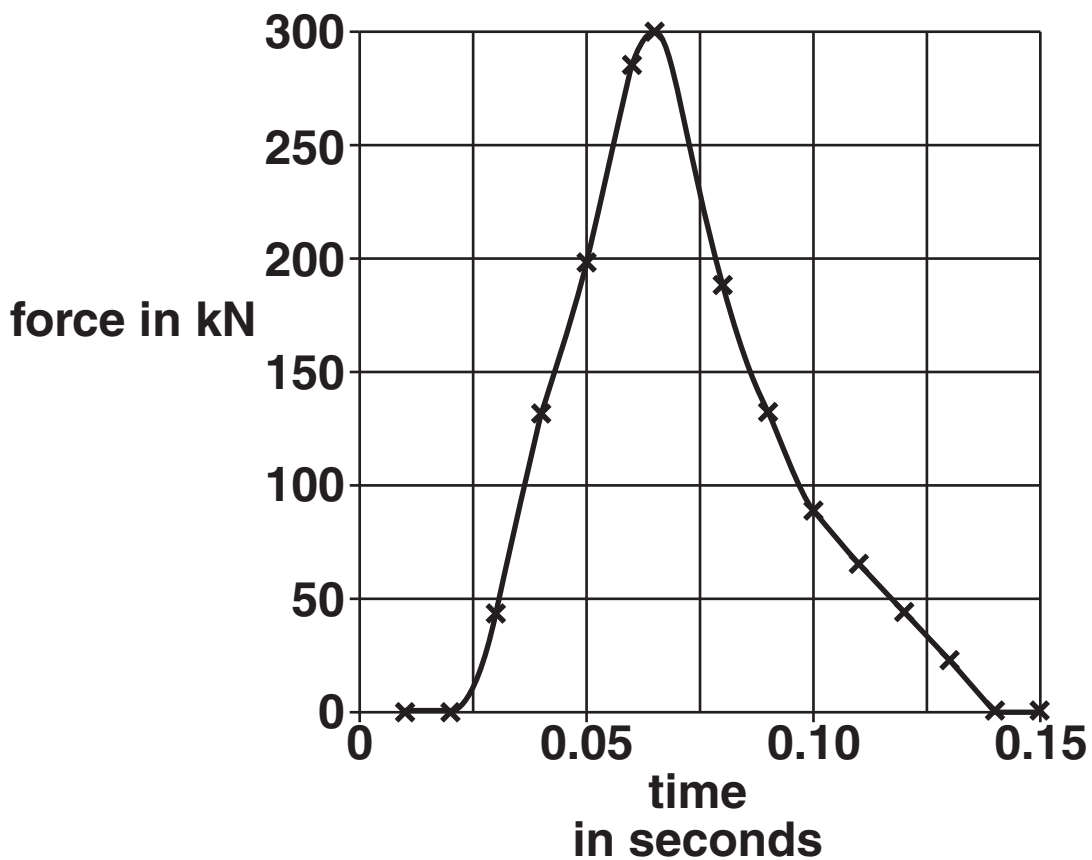


- (ii) The average force in a collision is reduced if the driving speed is reduced.  
Describe another way of reducing the average force in a collision.

---

[1]

- (b) This graph shows some of the data from the impact sensor.



The graph can be used to find the change in momentum during the collision.

What feature of the graph shows the change in momentum?

---

[1]

[Total: 5]

END OF QUESTION PAPER

**BLANK PAGE**

**BLANK PAGE**



## **Copyright Information**

**OCR is committed to seeking permission to reproduce all third-party content that it uses in its assessment materials. OCR has attempted to identify and contact all copyright holders whose work is used in this paper. To avoid the issue of disclosure of answer-related information to candidates, all copyright acknowledgements are reproduced in the OCR Copyright Acknowledgements Booklet. This is produced for each series of examinations, is given to all schools that receive assessment material and is freely available to download from our public website ([www.ocr.org.uk](http://www.ocr.org.uk)) after the live examination series.**

**If OCR has unwittingly failed to correctly acknowledge or clear any third-party content in this assessment material, OCR will be happy to correct its mistake at the earliest possible opportunity.**

**For queries or further information please contact the Copyright Team, First Floor, 9 Hills Road, Cambridge CB2 1GE.**

**OCR is part of the Cambridge Assessment Group; Cambridge Assessment is the brand name of University of Cambridge Local Examinations Syndicate (UCLES), which is itself a department of the University of Cambridge.**